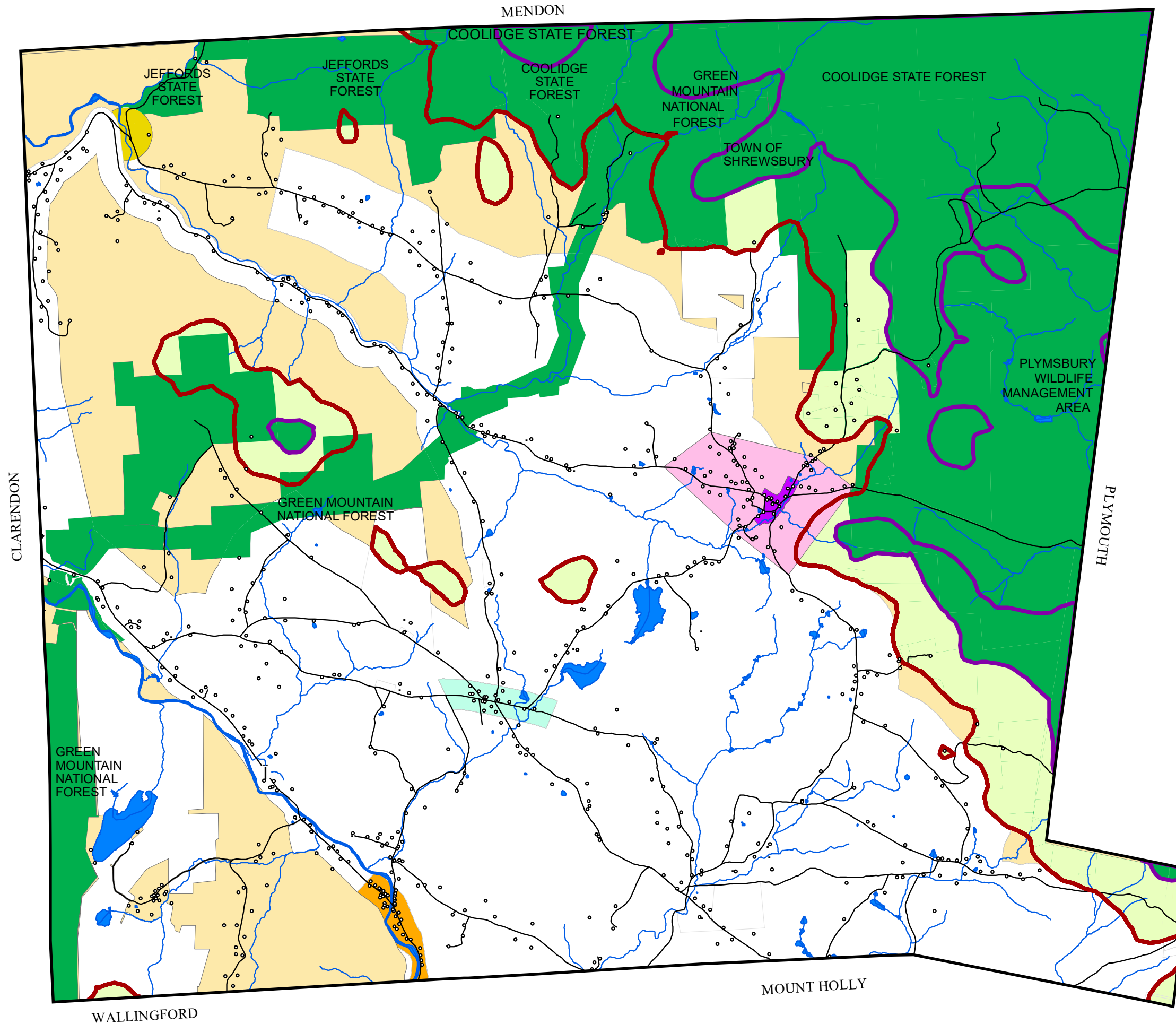


# SHREWSBURY, VT

## ZONING

Adopted November 2022



### Legend

- Shrewsbury Buildings
  - 2000 Foot Contour Line
  - 2300 Foot Contour Line
  - Rivers and Streams
  - Lakes and Ponds
- DISTRICT**
- Preservation District
  - Brown Covered Bridge Area
  - Cuttingsville
  - North Shrewsbury/Northam
  - Shrewsbury Center
  - Village Residential: North Shrewsbury
  - Limited Res. (Min. Lot Size 10 Acres)
  - High Elevation Residential
  - Rural Res. (Min. Lot Size 4 Acres)



# Natural Resources

## Shrewsbury Zoning

Adopted November 2022 (Map 1 of 2)

ROADS: VT Enhanced 911 project 1996 -1998. VCGI 2018.

SURFACE WATER: Vermont Hydrography Dataset using 1:5,000 digital orthophotos, USGS 7 1/2' quadrangles and 1:20,000 color infrared aerial photography and other data sources. Small stream setbacks from VT River Corridors , 2019.

POLITICAL BOUNDARIES: 1:24,000 USGS Quadrangles, Parcel data and other survey data.

FLOOD PLAIN: Digitized from FEMA Flood Insurance Rate Maps. Floodplains for planning purposes only. Refer to the VANR\_DEC, Water Quality Division, Floodplain coordinator for official floodplain determinations. (802) 241-3759.

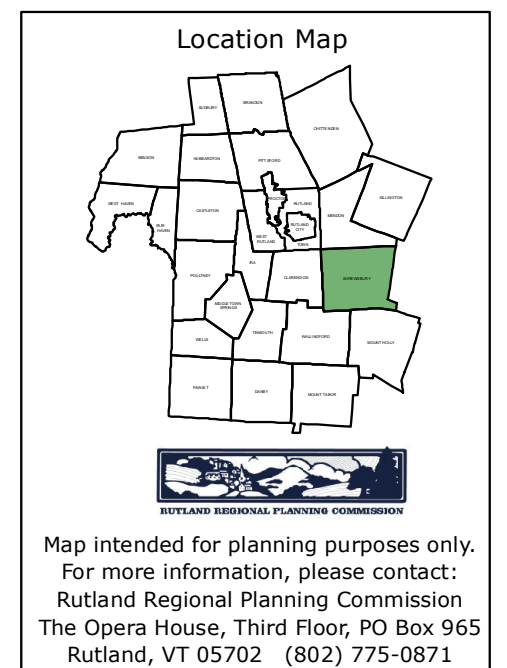
NWI WETLANDS: USFWS NWI used 1:80000 color infrared aerial photos (flown between 1975 and 1978), USGS topo sheets and other mapped and text data to interpret locations of wetlands. 3 acre mapping unit. Two-thirds of the wetlands were hand digitized from 1:24000 mylars. The remainder was scanned from 1:24000 or 1:25000 mylars. These mylars were created by transferring wetland polygon boundaries from 1:25000 NWI mylars to 1:24000 base maps. Wetlands for planning purposes only. Refer to the VANR-DEC, Water Quality Division, Wetlands Section for official wetlands determinations. (802) 241-3770.

RARE PLANT/ANIMAL SITES: Rare, Threatened and Endangered Species & Significant Communities, 1:24000, Vermont Nongame and Natural Heritage Program, VANR, 1997.

SLOPE: Slopes generated from USGS NED based DEM24 data. Slope was calculated for 30 by 30 meter pixel, 2002.

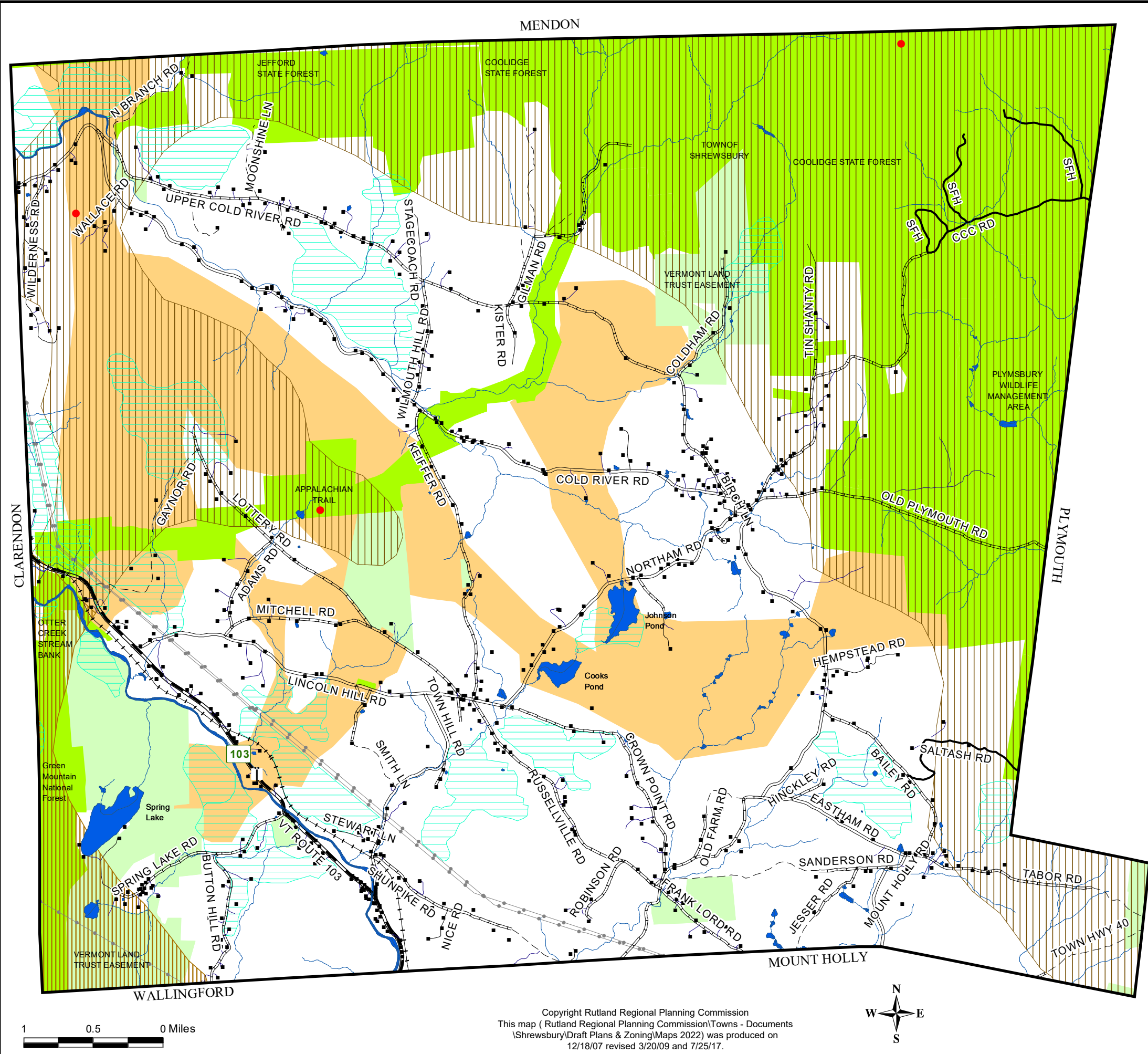
SOILS: Vermont Primary Agricultural Soils for Town and Act250 Planning. Natural Resources Conservation Service, State Data Table Top 20, October 11, 2005.

- Structures
- State Highway
- Class 2 Town Road
- Class 3 Town Road
- Class 4 Town Road
- State Forest Road
- Private Road
- Railroads
- Electric Lines
- Surface Waters
- Small Streams (50 ft setback)
- 2000 FT Elevation and Greater
- Lakes & Ponds
- Agricultural Soils
- Frequently Flooded Areas and Flood Plain
- NWI Wetland Areas
- 20 Percent Slope and Greater



Copyright Rutland Regional Planning Commission  
This map (Regional Planning Commission\Towns - Documents  
\\Shrewsbury\Draft Plans & Zoning\Maps 2022) was produced on  
12/18/07 revised 3/20/09 and 7/25/17.





# Natural Resources

## Shrewsbury Zoning

Adopted November 2022 (Map 2 of 2)

ROADS: VT Enhanced 911 project 1996 -1998. VCGI 2021.

SURFACE WATER: Vermont Hydrography Dataset using 1:5,000 digital orthophotos, USGS 7 1/2' quadrangles and 1:20,000 color infrared areal photography and other data sources.

POLITICAL BOUNDARIES: 1:24,000 USGS Quadrangles, Parcel data and other survey data.

PUBLIC LANDS: VCGI dataset: Protected Lands Database, 2021, a subset of the Vermont Conserved Lands database. It includes land owned by Municipal, State and Federal entities.

PRIVATE CONSERVED LANDS - land in full or partial ownership by 501(c)3 conservation organizations (VLT, TNC, GMC, and others)

WILDLIFE CORRIDOR RATING – State of VT Department of Fish & Wildlife, VT Agency of Transportation: VT Biodiversity Project.

DEER WINTERING AREAS: 1:24000 AND 1:25000, VANR, 2021.

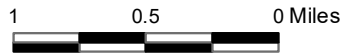
BLACK BEAR HABITAT: Vermont Fish and Wildlife Department, "Black Bear Habitat in Vermont, 1989"

NOTE:  
Wildlife Corridor Ratings are based on predictive models developed by the VT Fish and Wildlife Department further enhanced by conversations and observations with and by local residents

- Structures
- State Highway
- Class 2 Town Road
- Class 3 Town Road
- Class 4 Town Road
- State Forest Road
- Private Road
- Railroads
- Electric Lines
- Surface Waters
- Lakes & Ponds
- Public Lands
- Conserved Lands
- Deer Wintering Areas
- Bear Production Habitat
- Seasonal Bear Habitat
- Vermont Wildlife Suitability Analysis 8-10 (Wildlife Corridor Overlay)

Location Map

Map intended for planning purposes only.  
For more information, please contact:  
Rutland Regional Planning Commission  
The Opera House, Third Floor, PO Box 965  
Rutland, VT 05702 (802) 775-0871

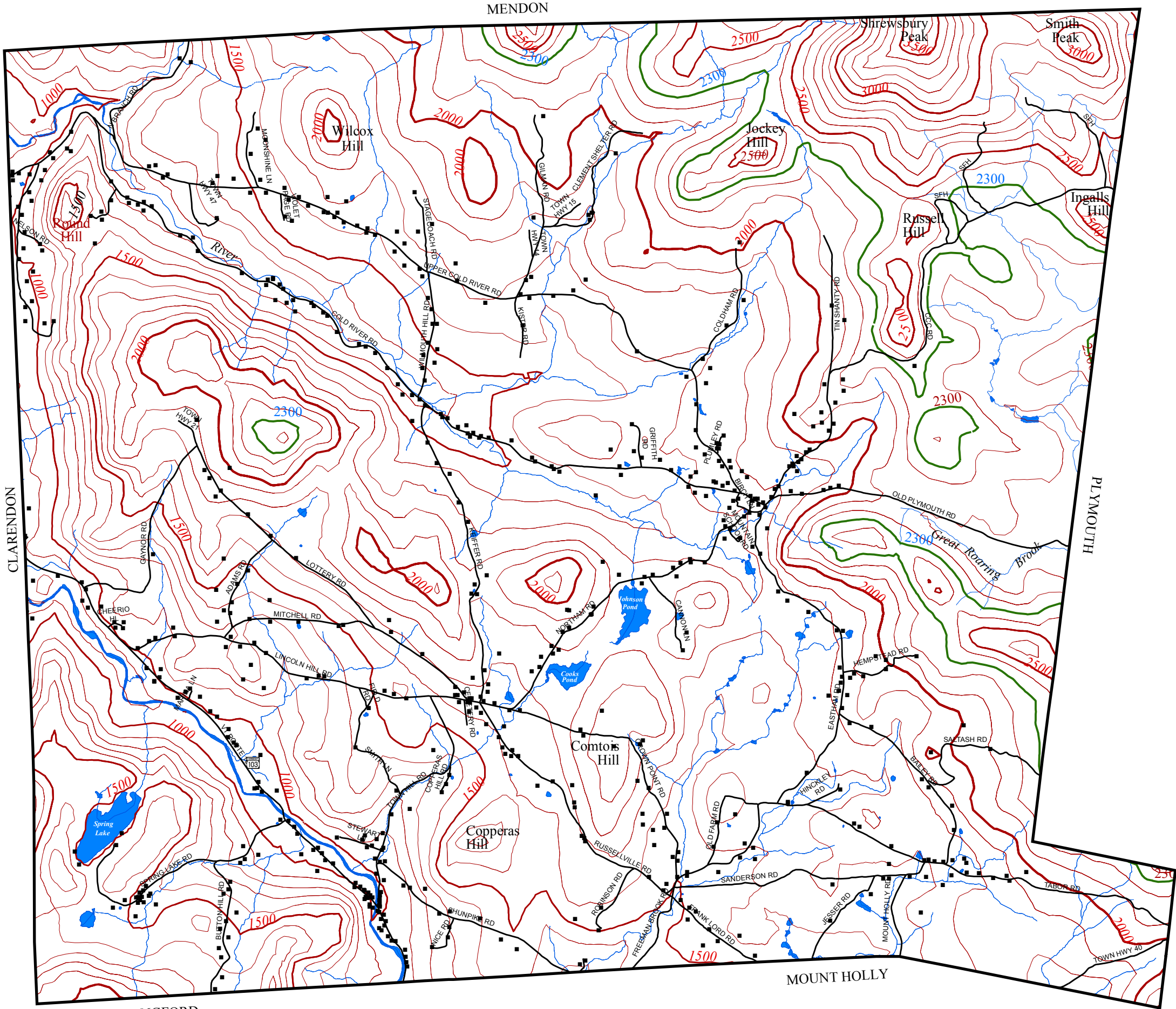


Copyright Rutland Regional Planning Commission  
This map ( Rutland Regional Planning Commission\Towns - Documents  
\Shrewsbury\Draft Plans & Zoning\Maps 2022) was produced on  
12/18/07 revised 3/20/09 and 7/25/17.



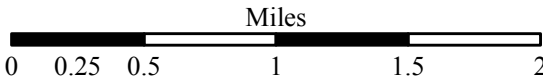
# SHREWSBURY, VT CONTOURS

ZONING  
June 2017



### Legend

- 100' Contour
- 2000' Elevation
- 2300' Elevation
- Rivers & Streams
- Roads
- Structures

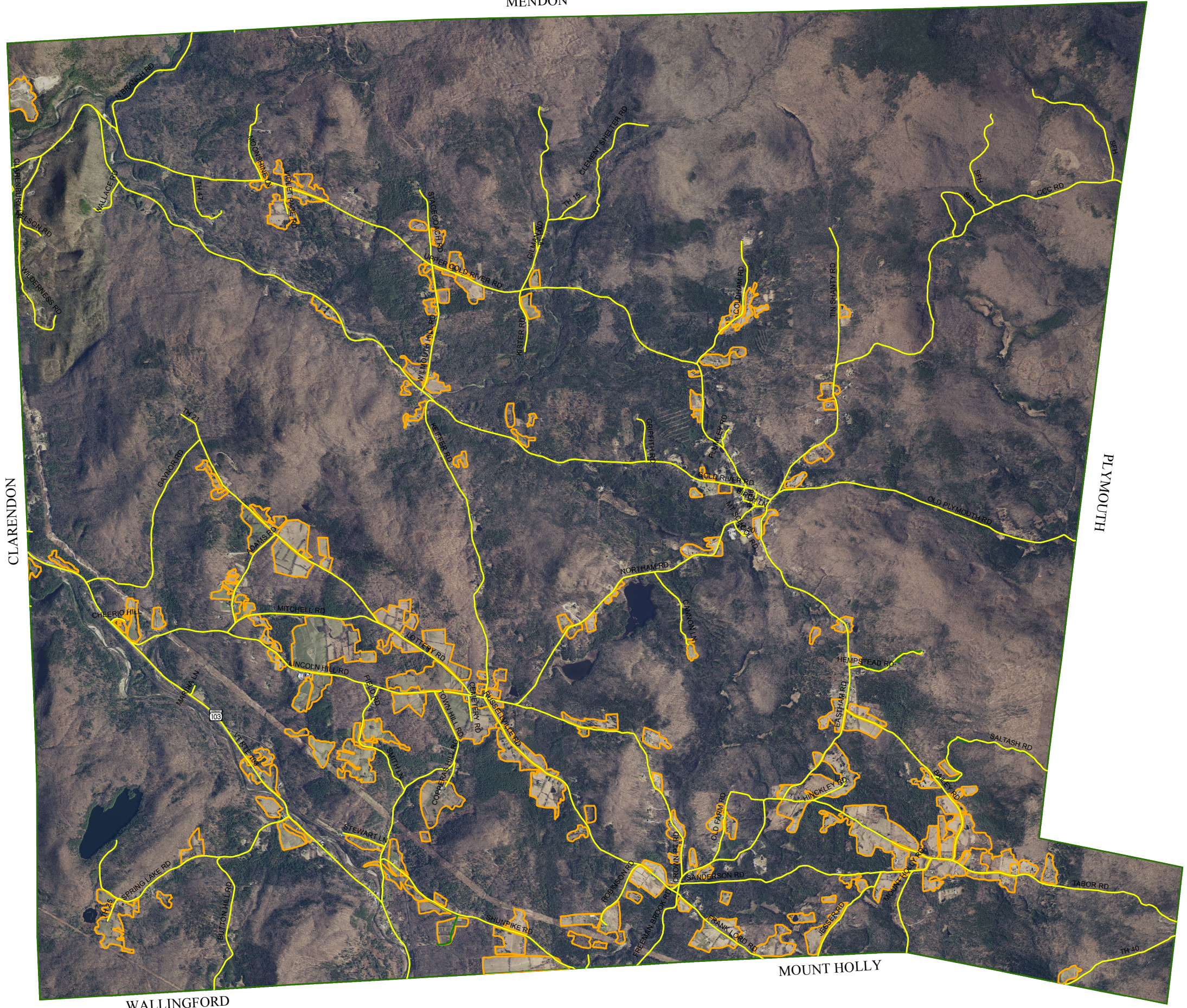


Copyright Rutland Regional Planning Commission  
This map (E:\RRPC\SHRWSBRY\Zoning 2017\Contours\_17.mxd) was  
produced on 12/18/07 revised 3/20/09 and 7/25/17.



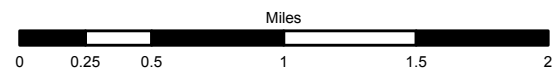
# SHREWSBURY, VT MEADOWLANDS

ZONING  
June 2017



- Roads
- Meadows of 2 Acres or more

Color Orthophotos: Vermont Mapping Program, 2016.



Copyright Rutland Regional Planning Commission  
This map ( E:\RRPC\SHRWSBRY\Zoning 2017\Meadowlands\_17.mxd) was  
produced on 12/18/07 revised 3/20/09 and 7/25/17.