



# Times of Shrewsbury



April 2023

## BLUEBIRD BOX BUILDING AT ITS BEST



Anna Peel

School children and local conservationists came together one recent Saturday morning to build birdhouses as part of a community effort to attract and house the declining bluebird population.

Shrewsbury families gathered at the Mountain School to hear bluebird expert Anna Peel describe the importance of providing a habitat for the Eastern Bluebird and depict the ideal location for its placement. Rapt children and adults listened while Anna portrayed what to expect to see at our bluebird boxes from the moment the male bluebirds arrive as the sap begins to run all the way up until they fly south again in September. In vivid detail, Anna explained the courting process, eggs hatching, and the development of baby bluebirds.

Principal Cimonetti welcomed longtime Shrewsbury Conservation Commission (SCC) member Peter Grace to introduce the bluebird box building workshop. Peter had spent weeks preparing for this event, cutting wood, gathering materials, soliciting borrowed tools, and arranging for plenty of hands-on support. Peter's collaborator, Grace Brigham, unveiled a hand-painted guide to the bluebird box and all its components, and invited attendees to commemorate the day by signing it as they gathered their supplies.

Eager to use power drills and hammers, children followed along with gorgeous hand-drawn instruction sheets, also illustrated by Grace Brigham, as they built their boxes step-by-step. Aided by their families and a full cast of SCC volunteers, the young builders spent the morning learning a new skill and constructing a fully functional bluebird box, ready to mount in the perfect location at home.

Anna Peel continued to circulate the event, passing out a helpful tip sheet and answering questions about the Eastern Bluebirds and generally rallying even more

enthusiasm for the coming bird-watching season.

The two-hour event was a time for nature-loving families to come together with intention and leave with a sense of accomplishment. The way Peter and Grace empowered



Ryan Fitzbeauchamp,  
Sky & Soraya



Everett Spatz &  
Sarah Bolster

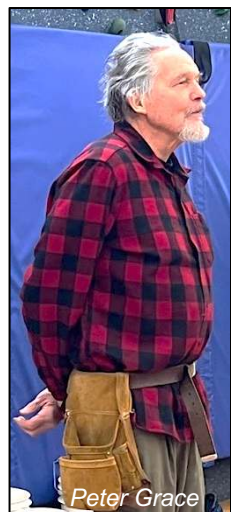
the children to create something meaningful and permanent with their own hands is a gift the kids will not soon forget.

Thank you to the Shrewsbury Conservation Commission and the Shrewsbury Mountain School for partnering to make this bluebird box building event happen. Thank you to the youth of Shrewsbury for your enthusiasm and creativity.

Article by Carrie Clancy  
Photos by Connie Youngstrom



Silas Sharrow



Peter Grace

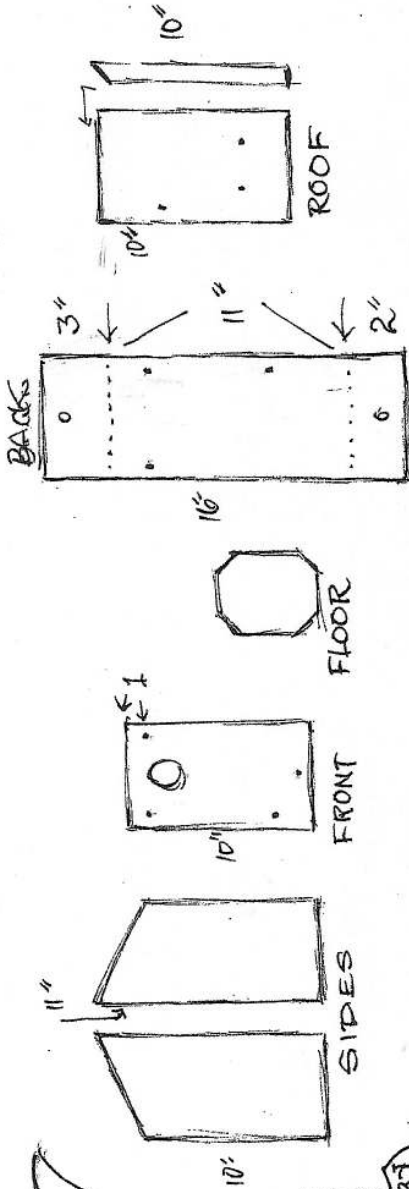


Thomas-Price Family



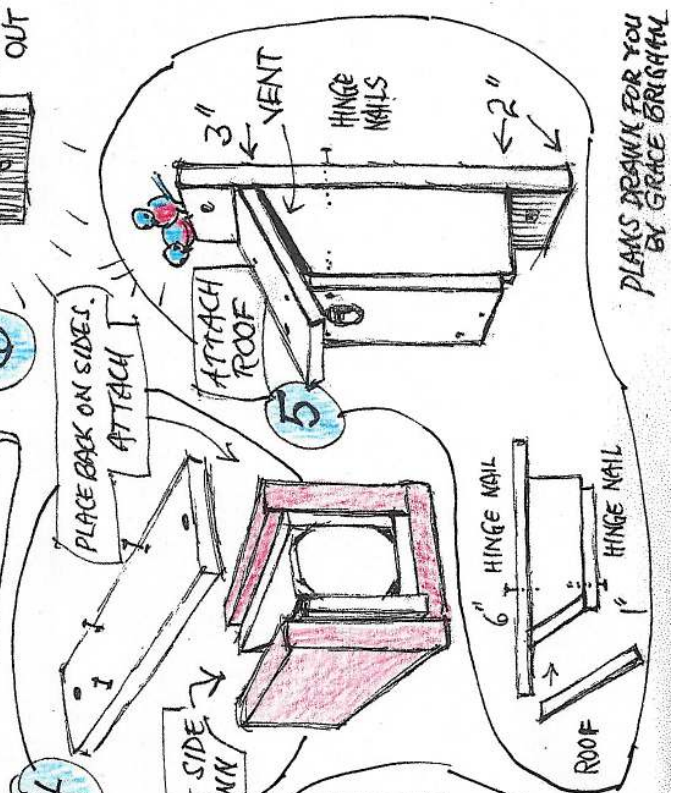
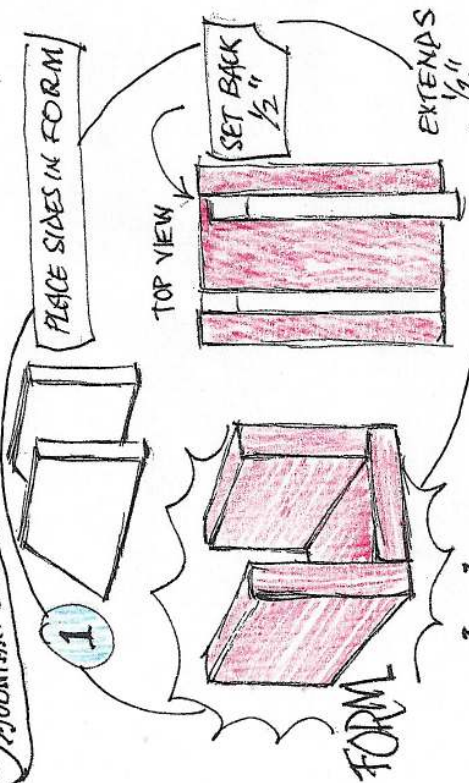
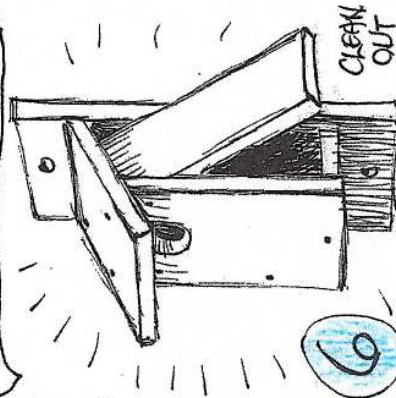
Based on 6" boards from Mill River Lumber's "Treasure Pile"

SHREWSBURY  
CONSERVATION  
COMMISSION  
PRESENTS  
**WELCOME,  
BLUEBIRDS!**  
MARCH 11, 2023  
AT THE  
SHREWSBURY  
MOUNTAIN SCHOOL



THIS PROJECT HONORS  
**STRING KLIN**  
A BLUEBIRD MAN OF WIMOTH HILL ☆  
WHO MADE BLUEBIRD HOUSES FOR  
FRIENDS AND EVERY FAMILY AT  
THE SHREWSBURY MOUNTAIN SCHOOL.

AFTER RESEARCHING,  
EXPERIMENTING, AND STUDYING  
THE REMNANTS OF A STRING  
KLEIN BIRDHOUSE, **PETER GRACE**  
HIS INTREPID CREW  
INCLUDED ANTHONY AND AUSTIN  
AT THE SHOP AT SPRING LAKE  
RANCH.



PLANS DRAWN FOR YOU  
BY GRACE BRIGHT

## SHREWSBURY COMMUNITY CALENDAR

Mar 25	8am-12noon	*Family Pancake Breakfast sponsored by the Shrewsbury Community Church
Mar 25-26		Vermont Maple Open House Weekend
Mar 28	12noon	*Prayer Shawl group meets upstairs in Meeting House
Mar 31	7pm	*Mid-Winter Trip to Yellowstone" program at the Shrewsbury Library
Apr 1	3pm	*Concert by "Spintuition" with Silas Hamilton at the Meeting House; free will donation
Apr 2	3:30pm	*Writers' group at the Shrewsbury Library
Apr 12	6pm	*Shrewsbury Cooperative at Pierce's Store Annual Meeting at the Meeting House
Apr 14	4-6pm	*Wine Tasting at Pierce's Store
Apr 16	4pm	*Famous Books Book Club meets at the Library
Apr 21	7pm	*The Impact of Plastics on Our Environment" presentation at the Library
Apr 23	4pm	*Science Book Club meets at the Library
May 6		*Green Up Day (details on page 22)
May 13	9am	*Bird walk at Jockey Hill Farm sponsored by Shrewsbury Conservation Commission
May 19	7pm	*Poetry reading by Sarah Audsley at the Library
May 21	3pm	*Shrewsbury Historical Society Meeting at the Museum
May 26	7pm	*Presentation on being a page at the Vermont State House by Cabot Spatz at the Library

\*see elsewhere in newsletter for details

### TIMES OF SHREWSBURY

online at  
[www.shrewsburyhistoricalsociety.com](http://www.shrewsburyhistoricalsociety.com)  
 and  
[www.shrewsburyvt.org](http://www.shrewsburyvt.org)



**Deadline for submission to *Times of Shrewsbury* is by 5:00pm on the 20<sup>th</sup> of each month.**

### REGULAR MEETINGS and EVENTS

Selectboard Meeting	1 <sup>st</sup> & 3 <sup>rd</sup> Wednesdays – 6:30pm at Town Office
Bone Builders	Tuesdays & Thursdays – 10am at Meeting House
Development Review Board	4 <sup>th</sup> Wed -7pm at Town Office; check town website for agenda
Library Trustees Meeting	2 <sup>nd</sup> Tuesday – 7pm at Shrewsbury Library
Mill River Unified Union School Board Mtg	1 <sup>st</sup> Wed 7pm @ MRHS & 3 <sup>rd</sup> Wed. 7pm at MRHS unless otherwise warned
Planning Commission	2 <sup>nd</sup> & 4 <sup>th</sup> Tuesdays 7pm at Town Office
Religious Society of Friends (Quakers)	Sundays – 10am via Zoom; contact wildernessfriends@gmail.com
Shrewsbury Community Church	Sundays – 10:30am - Worship service and Kids Funday Program
Shrewsbury Conservation Commission	1 <sup>st</sup> Tuesday of every month ! 5:15pm (April meeting will be virtual)
Shrewsbury Historical Society	May 21, 2023 @ 3pm in the Museum
Shrewsbury Historical Society Museum	Opens first Sunday in July, 2023 from 1 to 3pm
Shrewsbury Singers	Currently taking a break
Shrewsbury Sno-Birds	2 <sup>nd</sup> Tuesday – 7pm at Southside Steakhouse in Rutland
Shrewsbury Volunteer Fire Department	Thursdays – 7pm at the Cuttingsville Station

Shrewsbury Town Website: [www.shrewsburyvt.org](http://www.shrewsburyvt.org)

Clerk's Office	492-3511 Mon – Thurs 9am – 3pm; Closed Friday
Town Garage	492-3656 (Follow prompts to report roadway blockage on non-work days)
Listers	492-2009 Available by appointment
Treasurer's Office	492-3558 Monday 9am-11am
Transfer Station	492-3867 Sunday 8am-4pm ~ Wednesday 12noon-6pm
Library	492-3410 Hours: Mon 10am-12noon; Tues 7-9pm; Wed 10am-5pm & 7-9pm; Thurs 7-9pm; Fri 10-12noon; Sat 10am-12noon
Meeting House	492-6050 Reservations: 492-3361 or <a href="mailto:julanne@vermontel.net">julanne@vermontel.net</a>
News Flash Email:	<a href="mailto:vtbenbeano@gmail.com">vtbenbeano@gmail.com</a> or <a href="mailto:benbeano@vermontel.net">benbeano@vermontel.net</a> an email list for uUrgent and reminder news information]
Cuttingsville Post Office	492-3585 <u>Window Hours</u> Mon-Fri 7:30am-10:30am & 11:30am-2:30pm; Sat 8am-11am. <u>Lobby Hours</u> Mon- Fri 7:00am-7:00pm and Sat 7:00am-4pm
Burn Permit:	Forest Fire Warden Kevin Brown 802-345-8668 or, Deputy Fire Warden Al Ridlon, Jr. 802-282-3642
Animal Control Officer:	Vacant (Contact a Selectboard member) 1 <sup>st</sup> Constable: TBA Game Warden: Tim Carey 793-2776
Emergency Management Aaron Korzun	492-3362 Green Mountain Power outage 1-800-451-2877
Medical-Police-Fire Emergency Dial 911	Ambulance 773-1700 Rutland Hospital 775-7111 [Updated 03/20/23]



## LETTERS TO THE EDITORS

### Thanks for Election Volunteers

THANK YOU to all the Poll Workers and Vote Counters who supported the 2023 Annual Town Election:

John Berryhill, Rich Biziak, Dany Côté, Sally Deinzer, Linda Fontana, Mark Goodwin, Barry Griffith, Aaron Haupt, Betsy Jesser, Aaron Korzun, Greg McGown, Steven Nicholson, Trish Norton, Adrienne Raymond, Cynthia Thornton, Sharon Winnicki, and Francis Wyatt.

~Submitted by Megan LaChance, Shrewsbury Town Clerk  
~~~~~

### In Memory of Lou Williams

Lou and Tess Williams lived in Shrewsbury for 12 years but moved to New Hampshire a few years ago to be nearer family. On Friday, March 3, 2023, Lou passed away. Lou and Tess were very kind and thoughtful people, and they made many friends in Shrewsbury. Send condolences to Tess Williams, 33 Tarah Way, Freemont, NH 03044. ~Submitted by Fran Patten  
~~~~~

### Road Crew Kudos

Thank you to our fabulous road crew! Year round, Shrewsbury is lucky to have such a hardworking, responsive, skilled, dedicated road crew keeping our roads clear, safe, and in good shape. During the recent big snow dump that spanned several days, we were imagining how non-stop their work was keeping our town's road accessible, and we felt especially grateful. The road crew works in all types of weather, all times of day, every day it's needed (including those holidays that they also want to be home with their families), and we just wanted to share a big thank you for your work. If you happen to be driving through another town during a snowstorm, you will know how the work of our town's road crew certainly stands out. Thank you!

~Submitted by Kara Fitzbeauchamp  
~~~~~

### Vermont State Senators:

Brian Collamore: [bcollamore@leg.state.vt.us](mailto:bcollamore@leg.state.vt.us)

Terry Williams: [twilliams@leg.state.vt.us](mailto:twilliams@leg.state.vt.us)

David Weeks: [dweeks@leg.state.vt.us](mailto:dweeks@leg.state.vt.us)

### Vermont State House of Representative:

Logan Nicoll: [lnicoll@leg.state.vt.us](mailto:lnicoll@leg.state.vt.us)

The Vermont General Assembly is in session January thru June. To view committee member-ships, bills that have been introduced, track each bill's progress, and review committee agendas go to [www.leg.state.vt.us](http://www.leg.state.vt.us). During the week you can contact your legislator by leaving a message at the State House by calling 1-800-322-5616 or 828-2228 (the Sergeant-At-Arms' Office).

### United States Senators:

#### Senator Peter Welch

[www.welch.senate.gov](http://www.welch.senate.gov)

Vermont Office: (800) 642-3193

Washington D.C. Office: (202) 224-4242

#### Senator Bernie Sanders

[www.sanders.senate.gov/contact](http://www.sanders.senate.gov/contact)

Vermont Office: (800) 339-9834

Washington D. C. Office: (202) 224-5141

### United States House of Representative:

Representative Becca Balint

Vermont Office: 347-461-4982

Washington D. C. Office: (202) 225-4115

Revised 1/16/23

## TIMES OF SHREWSBURY

The Times of Shrewsbury is published monthly from February through December, and compiled by volunteers from material submitted by residents with the goal of informing townspeople of what is happening in Shrewsbury. The views and opinions expressed in articles are solely those of the author and not necessarily those of the editors.

All submissions must be accompanied by the name of the submitting person and are printed at the editors' discretion subject to editing for length and clarity. Letters to the Editor exceeding 350 words will be subject to editing for length. Any information piece or informational political letters (without specific party or vote appeal) will be subject to the guidelines previously described.

A writer of a letter that names a Shrewsbury resident or organization in a critical manner must get copies to the resident or organization, and to the Times by the 10th of the month prior to publication or it will not run. If the named person or organization indicates in writing to the writer and to the Times that they choose not to respond, the letter will run. If the named entity responds, the response and initial letter will run in the same issue.

There is no charge for: jokes, poems, nature reports, family event announcements, or feature articles or letters that are not commercial.

Articles and Advertisements: Deadline for submission is 5pm on the 20th of the month prior to publication; exceptions will be announced in the prior month's Times.

Ads in the Times are for area businesses, local non-profit events, and local ballot election advertisements.

Best Formats: Articles: Word or as an email message with no formatting. Photos: jpeg. Ads: jpeg or Word document.

Monthly advertising fees and relative sizes:

|               |       |                                    |
|---------------|-------|------------------------------------|
| Full page     | \$100 | (7.5"w x 9.5"h)                    |
| Half page     | \$60  | (7.5"w x 4.5"h or 3.5"w x 9.5"h)   |
| Quarter page  | \$12  | (7.5"w x 2.5" h; or, 3.5"wx 4.5"h) |
| Business card | \$6   | (3.5"w x 2"h)                      |
| Classified ad | \$3   | (15 words or less)                 |

Payment due by the 20th of the month prior to publication.

2/1/2023

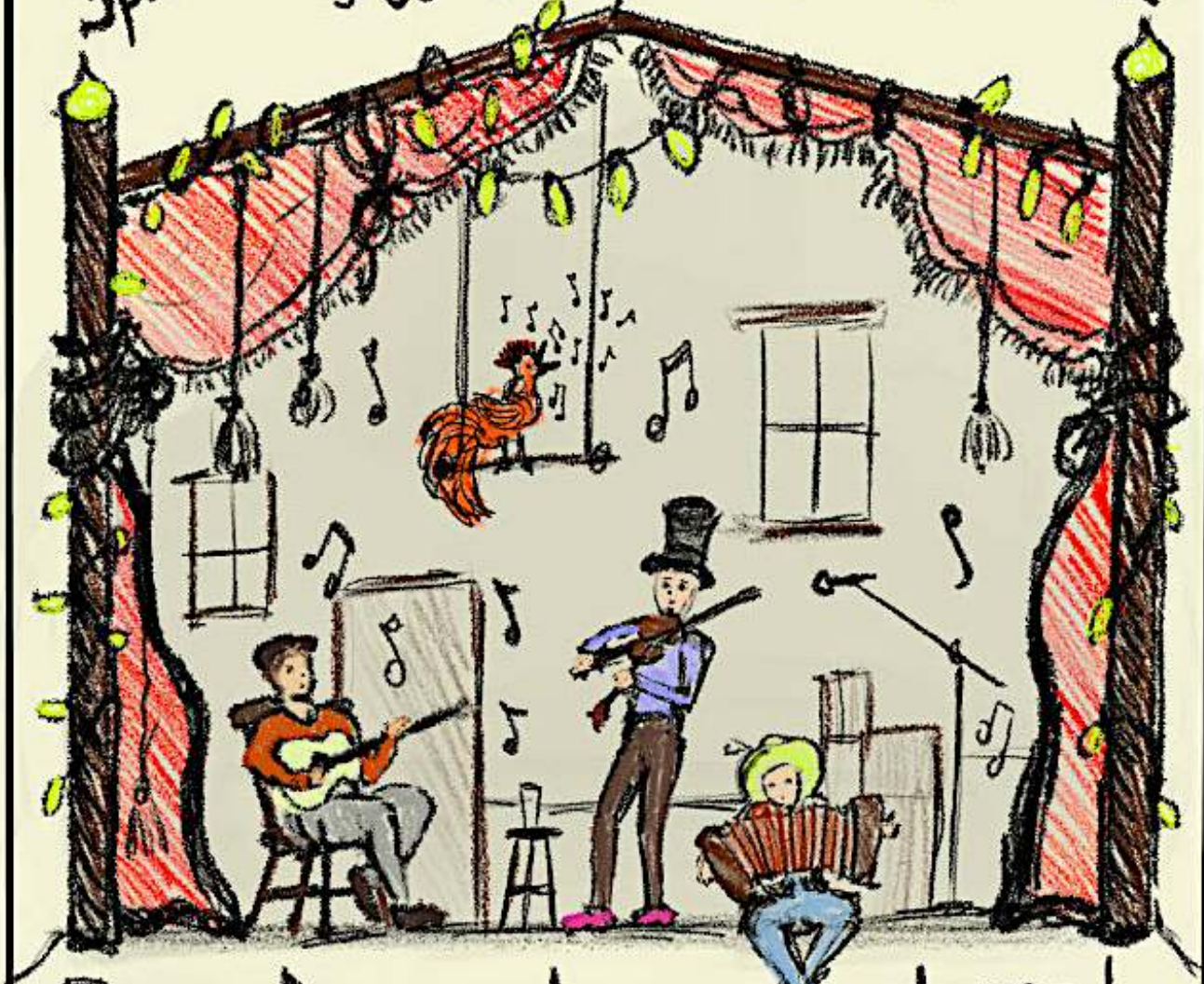
Chryl Martin ~ Rich Biziak ~ Victoria Arthur  
Times of Shrewsbury, P. O. Box 373, Cuttingsville, VT 05738

Email: [shrewsburytimes@gmail.com](mailto:shrewsburytimes@gmail.com) Online: [www.shrewsburyvt.org](http://www.shrewsburyvt.org) and <http://www.shrewsburyhistoricalsociety.com>



# SPINTUITION!

♫ Saturday April 1st ♫  
3pm at the Shrewsbury Meeting House  
~88 Lottery Road~



Bring ♫ your dancing shoes!  
Free will donation at the door

Mr. 2

## SHREWSBURY SELECTBOARD MINUTES

*The Selectboard meets the 1<sup>st</sup> and 3<sup>rd</sup> Wednesday at 7pm at the Town Office.*

### March 1, 2023: Minutes of Selectboard Meeting

**Present at meeting:** Selectboard members: Aaron Korzun, Francis Wyatt, Steven Nicholson.

**Members of the Public:** Chris Clarke

The meeting was convened at 6:30 PM

**Agenda:** Motion made by A. Korzun to follow the agenda with the additions of Excess weight permits for Demag Riggers and Crane Service, Markowski Excavating, Normandin Transit, Proctor Gas Inc., Phoenix Feeds, and Feed Commodities International, and Tax Map Maintenance proposal from CAI Technologies, and Town Representative to OCCUD governing board. F. Wyatt seconded. All in favor, motion approved.

**Contract – Wright Appraisals:** The proposed contract is written assuming that we have no listers. The contract will need to be revised after we know if we have any listers and how many.

Excess weight permits: Fees paid and insurance in order. A. Korzun made a motion to approve excess weight permits for Belden Construction, Champlain Construction Co., VELCO, Demag Riggers and Crane Service, Markowski Excavating, Normandin Transit, Proctor Gas Inc., Phoenix Feeds, and Feed Commodities International. S. Nicholson seconded. Approved.

**New Business:** Chris Clarke requested that we increase Sheriff's patrolling of Rte 103 in order to slow drivers' speeds. The Selectboard mentioned that there already is an emphasis on Rte 103.

**Tax map maintenance proposal:** A. Korzun made a motion to approve the Tax Map Maintenance Contract with CAI Technologies for \$1,600 for one year from April 1st 2023 to March 31st 2024. S. Nicholson seconded. Approved.

**Town Representative to OCCUD:** A. Korzun made a motion to appoint Laura Black as representative to the OCCUD Governing Board and Alan Shelvey as alternate. F. Wyatt seconded. Approved. *(Editor's note OCCUD is the Otter Creek Communications Union District.)*

Review Minutes: A. Korzun made a motion to accept the 2/15/2023 Selectboard meeting minutes. Seconded by S. Nicholson. Approved.

**Review Orders:** F. Wyatt made a motion to approve Selectboard Orders #3 for \$5,182.97 and Road Orders #3 for \$24,211.92. Seconded by A. Korzun. Approved, S. Nicholson abstained.

Adjourned at 8:17 PM

*Respectfully submitted, Francis Wyatt  
These minutes are unofficial until approved by the Selectboard at the next regularly scheduled meeting.*

~~~~~

### March 15, 2023: Minutes of Selectboard Meeting

**Present at meeting:** Selectboard members: Aaron Korzun, Francis Wyatt, Marc Cimonetti.

**Members of the Public:** Adrienne Raymond

The meeting was convened at 6:35 PM

**Agenda:** Motion made by A. Korzun to follow the agenda with the additions of Excess weight permits for Connecticut Valley Trucking Inc., and Consolidated Communications; and Listers appointments; and Wright Appraisals contract; and Curb cut for Sheryl Amidon at 521 Eastham Rd. F. Wyatt seconded. All in favor, motion approved.

**Selection of Chair:** F. Wyatt made motion to elect A. Korzun Selectboard Chair. M. Cimonetti seconded. Approved.

**Organization (Time & Place of Regular Meetings, Newspaper of Record, Places of Posting):** A. Korzun made a motion that the time & place of Selectboard meetings be 1st and 3rd Wednesdays of each month at 6:30 PM at the Town Office; Newspapers of record be Times of Shrewsbury and Rutland Herald; Places of posting be Town Office, Post Office, Pierces, Shrewsbury Meeting House, Transfer Station. M. Cimonetti seconded. Approved.

**Appointments:** A. Korzun made a motion to appoint Jamie Carrara for Road Commissioner, Aaron Korzun for Emergency Management Director, Marc Cimonetti for Emergency Management Coordinator, Davis Terrell for Energy Coordinator, Gerry Martin for Rutland Regional Ambulance Rep., Connie Youngstrom for Green-up Coordinator, Bert Potter for Transfer Station Admin., Steven Nicholson, Bert Potter, and Adrienne Raymond Fence Viewers, Greg Miller for Inspector of Lumber, Greg Miller for Weigher of Coal, Aaron Korzun for Act 64 Advisory Committee, Adrienne Raymond for Animal Control Officer, Jack Perry for Regional Emergency Management Committee, Marc Cimonetti for Rutland Region Transportation Council, Laura Black for Rutland Regional Planning Commission, Aaron Korzun for alternate to the Rutland Regional Planning Commission, Bert Potter for SWAC Representative. F. Wyatt seconded. Approved.

A. Korzun made a motion to appoint Laura Black for Shrewsbury Planning Commission; Louise Duda, Pam Darrow, Connie Youngstrom, Peter Grace for Conservation Commission; Mark Youngstrom for Meeting House Trustee; Elijah LaChance for Library Board Trustee. F. Wyatt seconded. Approved.

**We still don't have someone for:** Tree Warden, 1st Constable, 2nd Constable, Pound Keeper, 2 Cemetery Commissioners.

Still waiting to hear back from Mark Youngstrom for Development Review Board nominees.

**Election Results:** Discussed the various people elected on Town Meeting Day.



## SHREWSBURY SELECTBOARD MINUTES

(continued)

Aaron Korzun made a motion to appoint Clara Krueger for 2 years of a 3-year term as Lister, Rebecca Bates for 1 year of a 3-year term as Lister. F. Wyatt seconded. Approved.

**Contract** – Wright Appraisals: The contract has been revised to reflect that we will have a full Board of Listers. Lisa Wright would like to meet the Listers and for them to also sign the contract so there is a clear understanding of the roles. A. Korzun made a motion to sign the contract with Lisa Wright for contract assessor for Shrewsbury while the new Listers get trained. F. Wyatt seconded. Approved.

**Excess weight permits:** Fees paid and insurance in order. A. Korzun made a motion to approve excess weight permits for JP Carrara & Sons, r.k. Miles, Cardinal Logistics, Connecticut Valley Trucking Inc., and Consolidated Communications. F. Wyatt seconded. Approved.

**Curb cut:** A. Korzun made a motion to approve a Work in the right of way permit for Sheryl Amidon at 521 Eastham Rd. M. Cimonetti seconded. Approved.

**Town Website:** Discussion postponed.

**Review Minutes:** A. Korzun made a motion to accept the 3/1/2023 Selectboard meeting minutes. Seconded by F. Wyatt. Approved.

**Review Orders:** F. Wyatt made a motion to approve Selectboard Orders #3a for \$4,420.52 and Road Orders #3a for \$24,026.51. Seconded by M. Cimonetti. Approved. F. Wyatt made a motion to correct Selectboard Orders #3 to \$5,187.97. Seconded by M. Cimonetti. Approved.

Adjourned at 9:20 PM

*Respectfully submitted, Francis Wyatt*

*These minutes are unofficial until approved by the Selectboard at the next regularly scheduled meeting.*

*Editor's Note: The minutes have been edited for brevity but not content. For complete minutes, go to the Town website [www.shrewsburyvt.org](http://www.shrewsburyvt.org)*

~~~~~



### PVF Services LLC

Excavation, Trucking, driveway repair, site prep, building removal, brush grinding and much more!

**Neal and Chad**

1368 Lincoln Hill

Cell 802 236 8105

Shrewsbury Vt, 05738

Office 802 492 3364

[sharrowmaple@gmail.com](mailto:sharrowmaple@gmail.com)

## SHREWSBURY TOWN MEETING RESULTS 2023

963 registered voters

253 ballots counted (26.3% voter participation)

**MODERATOR:** ELDRED FRENCH – 235

**SELECTMAN – 3 YEAR TERM:**

FRANCIS WYATT – 215

**SELECTMAN – 2 YEARS OF 3 YEAR TERM:**

MARC CIMMONETTI – 123

ADRIENNE RAYMOND – 116

**AUDITOR – 3 YEAR TERM:**

MICHELLE GREENE – 228

**AUDITOR – 2 YEARS OF 3 YEAR TERM:**

RICHARD BIZIAK – 229

**LISTER – 3 YEAR TERM:** SCOTT RYAN – 207

**LISTER – 2 YEARS OF 3 YEAR TERM:**

No write-in received the requisite number of votes.

**LISTER – 1 YEAR OF 3 YEAR TERM:**

No write-in received the requisite number of votes.

**DELINQUENT TAX COLLECTOR:**

STEVEN NICHOLSON – 225

**FIRST CONSTABLE:**

No write-in received the requisite number of votes.

**SECOND CONSTABLE:**

No write-in received the requisite number of votes.

**CEMETERY COMMISSIONER – 3 YEAR TERM:**

No write-in received the requisite number of votes.

**CEMETERY COMMISSIONER – 2 YEARS OF 3 YEAR**

**TERM:** No write-in received the requisite number of votes.

**MILL RIVER UNIFIED UNION SCHOOL DIRECTOR:**

CINDY VAN DIEN – 120

STEPHEN ABATIELL – 102

**ARTICLE #2:** YES – 214 NO – 33

**ARTICLE #3:** YES – 215 NO – 31

**ARTICLE #4:** YES – 221 NO – 36

**ARTICLE #5:** YES – 215 NO – 32

**ARTICLE #6:** YES – 216 NO – 31

**ARTICLE #7:** YES – 208 NO – 34

**ARTICLE #8:** YES – 212 NO – 34

**ARTICLE #9:** YES – 213 NO – 35

**ARTICLE #10:** YES – 221 NO – 28

**ARTICLE #11:** YES – 213 NO – 38

**ARTICLE #12:** YES – 204 NO – 40

**ARTICLE #13:** YES – 199 NO – 43

**ARTICLE #14:** YES – 214 NO – 31

**ARTICLE #15:** YES – 215 NO – 31

**ARTICLE #16:** YES – 209 NO – 36

**ARTICLE #17:** YES – 202 NO – 43

**ARTICLE #18:** YES – 208 NO – 39

**ARTICLE #19:** YES – 211 NO – 34

**ARTICLE #20:** YES – 192 NO – 51

**ARTICLE #21:** YES – 195 NO – 47

**ARTICLE #22:** YES – 190 NO – 49

**ARTICLE #23:** YES – 213 NO – 31

**ARTICLE #24:** YES – 197 NO – 47

**ARTICLE #25:** YES – 194 NO – 46

**ARTICLE #26:** YES – 203 NO – 42

**ARTICLE #27:** YES – 190 NO – 52

**ARTICLE #28:** YES – 224 NO – 17

*Megan A. LaChance, Esq. Shrewsbury Town Clerk*

*Editors' Note: See page 4-5 of Annual Town Report for complete description of Articles 1-28.*

## NEWS FROM MONTPELIER

As I mentioned before, Friday March 17 was "crossover". So you will be hearing about a lot more legislation right now because it will have been voted out of the "policy" committee in the chamber it started in and we will be voting on all those bills on the floor to send them to the other chamber over the next couple weeks. In some ways it's hard not to develop a bit of tunnel vision in the legislature, we get so focused on our own committee work and it can be hard to follow what all the other committees are doing, but these next few weeks we will be voting on all of it.

In my committee over the past few weeks, we have been working on a workforce development bill that proposes spending of just over 59 million dollars in various initiatives aimed at supporting Vermont workers. Last session we drafted a very similar bill (Enacted as Act 183) with similar provisions and expenses, but with a strong focus on incentives for Vermonters to go into the healthcare workforce and for those already working in healthcare to increase their education and earning potential. This year our workforce bill is structured very similarly, but the focus is on the education sector. With more programs geared towards removing barriers to become a teacher in the state. That bill passed out of my committee unanimously.

In terms of our other work before crossover we have passed four other bills out of my committee so far this year, all unanimous with tri-partisan support. Three were mostly what we call "housekeeping" bills that clean up old and outdated language in statutes and made relatively minor policy changes.

H.217 sets the annual rate of contributions for the Workers' Compensation Administration Fund and makes permanent some provisions around appealing decisions which have been standard practice for many years.

H.55 is our semi-annual Unemployment Insurance miscellaneous bill which makes mostly non-substantive changes that update references in statute and otherwise "clean up" statutory language to conform with current practice and federal law. The substantive changes we do propose in the bill have to do with the way non-profit organizations interact with the unemployment system. After the heightened use of the unemployment system during the pandemic, we came to realize that non-profits were not adequately informed about their

options for providing unemployment benefits, so this bill proposes an outreach program by the State Department of Labor to non-profits to properly explain the unemployment system and their options.

H.76 is our annual captive insurance housekeeping bill. The captive insurance industry in Vermont is something I was not very aware of until I started serving on the Commerce and Economic Development committee, but we are consistently one of the leading domiciles in the world for the captive insurance industry and it is a fascinating industry.

H.10, the last bill out of my committee this session was on the Vermont Employment Growth Incentive Program (VEGI). This bill was more substantive and less "housekeeping" than the others. VEGI is a program that allows employers to get grants from the state for growing the number of employees they have, giving them an incentive to offset their capital investments. We had some very long conversations about this program, how it works and whether we think it's working the way we want it to or the way it was intended. Ultimately, we decided to make some changes to make the program more transparent and commissioned a study/report on incentives programs in other states and will revisit whether we think this program should continue next session.

*As always please reach out about these or anything else,  
Logan Nicoll, State Representative  
Ludlow, Mount Holly, Shrewsbury  
802-345-8430; RepLoganNicoll@gmail.com*

## GARDENER NEEDED

WEEDING FLOWER GARDENS

Upper Cold River Rd.

Please call Vaughan and Eleanor

**802-773-7513**



## Happy Easter!

brunch board kits are now in stock!  
jelly beans, maple popcorn, chocolates and  
sweets are ready for your Easter baskets!

**Stewart Maple Marketplace**  
**Thursday - Saturday 11-5**  
**Sunday 11-4**

**5444 VT ROUTE 103 SHREWSBURY, VT**  
**www.stewartmaple.com**







## Spring Lake Ranch therapeutic community

### Sweet Labors

Nothing is more Vermont than maple syrup, and here at the Ranch, sugaring is a celebration of our land, our community, and our mission.

Our approach to syrup making is a varied one. About 1,200 buckets are placed along our road and pasture edges, monitored throughout the season. Groups of Ranchers in old French Navy trucks with tanks on the back collect the sap. We also have a network of barrels and platforms connected to a downward sloping mainline. As the buckets are collected, we pour the sap into barrels that live atop our platforms, and it funnels by gravity down to a collecting tank accessible by truck. This system accounts for another 500 trees. Up the hill, we have an older tubing system covering 1,600 trees, designed to flow downhill into the same collection tank. Finally, our most modern system includes 1,200 trees on a vacuum pump that delivers sap directly to tanks in the Sugarhouse.

As you can imagine, these 4,500 trees keep us busy throughout the six-week season. Our Sugarhouse, like most, is a continual work-in-progress. While we demonstrate some high efficiency methods for making maple syrup, like our new reverse-osmosis machine, we also hold onto tried-and-true approaches that involve a little more work and a lot more hands. In fact, we have pictures in our Sugarhouse of Ranchers in the 1950s bucket-collecting and it looks like it could have been taken yesterday. Exposure to a variety of methods teaches our Ranchers that there are many ways to achieve our goals, which will help them with any challenge they face.

Beyond the logistics of syrup-making, there is so much to love about the process. Driving that old Navy Truck through pastures lined with maple trees, watching twenty people working together, carrying buckets of sap across the hillside, back and forth, seeing the sap tank slowly fill...100, 200, 300 gallons. A true community effort. Half of us have long loved the crisp air, the refreshing sap, and the pride of a hard day's work; the other half are experiencing it all for the first time. It's a special gift to share our passion for sugaring with the first-timers: to see someone's face light up when they drill a taphole and sap starts dripping before they can even get the tap in, or the rosy cheeks and beaming smile of someone proud to be stoking the fire well above 800 degrees, or the warm contentment that passes over all of us when we taste the fresh hot syrup before putting it in jugs for storage.

Making syrup is essential work for us. Our community comes together to do the hard work of harvesting a bounty from the land. All the profits from our syrup sales are fed back into the Ranch's financial aid program, helping us bring more people into our community. But in a more holistic sense, a more poetic sense, sugaring embodies the mission of the Ranch: empowerment through work, transformation in community, healing with nature. Mother Maple bestows her bounty as the herald of spring, but the real magic is in the process, the community, and the medicine of it all. Best of all, we get to share the sweet fruits of our labor with one another across the table and across the country.

~Article by Doug Patton and Martin Murphy



## SHREWSBURY VOLUNTEER FIRE DEPARTMENT

The SVFD has had three emergency calls of note since our last report. On Tuesday, February 28 we responded to a reported chimney fire on Old Farm Road. Sometimes the heat and flames from such an event can cause the fire to extend into the house itself, with disastrous results. Happily, the call and response in this case were both prompt, and the fire was extinguished before it could extend. If you have a chimney fire – or any fire -- don't delay. Dial 911 and summon us.

Our other two recent calls were responses to motor vehicle accidents. The first was a single car rollover on Town Hill Road on Sunday, February 26. The blinding snowstorm that day was undoubtedly a contributing factor. On Sunday morning, March 15, a car failed to negotiate the turn on Northam Road at Buck's Corner. Townspeople heading to the transfer station found the vehicle planted in the deep snow with the operator unconscious. Our members were alerted and quickly responded from Northam Station. Immediately after the accident the car was still in gear, and the operator's foot was pressing down on the accelerator. The vehicle's engine was revving and its tires were spinning wildly. Good Samaritans managed to rouse the operator, get him out of the vehicle and kill the motor by the time SVFD's fire engine arrived. Our members remained at the scene for the next hour, assisting the responding Rutland Ambulance Service crew and Vermont State Police, and directing traffic around the emergency vehicles until both lanes of the highway were clear.

Motor vehicle crashes can often result in the occupants being entrapped in the vehicle, and in injuries requiring hospitalization. Both operators in these recent accidents were lucky to avoid such consequences. In recent years our volunteer members have had to deal with too many crashes resulting in serious bodily injury or death. We don't want our next call to be another one of those. Please drive cautiously. Be smart and stay safe.

*Submitted for SVFD by Barry Griffith*

### THE SVFD NEEDS YOU!

We need new and younger members. The Shrewsbury Volunteer Fire Department (SVFD) can provide equipment, training, and support. Whether you've had prior experience as a first responder or have no experience at all! We need volunteers. Men or women who would like further information may call Bob Snarski at 492-3505, Barry Griffith at 492-3573, or Jack Perry at 773-3278. No commitment necessary.

# SHREWSBURY LIBRARY

*Library News Submitted by Joan Aleshire*

## LIBRARY & FOOD SHELF HOURS

**Monday 10 am to 12 pm**

**Tuesday 7 pm to 9 pm**

**Wednesday 10 am to 5 pm & 7 pm to 9 pm**

**Thursday 7 pm to 9 pm**

**Friday 10 am to 12 pm**

**Saturday 10 am to 12 pm**

Please don't visit us if you're not feeling well, and wear a mask indoors if you want or need to.

To search the Library Catalog, put a Hold on a book or video in our collection, or get the latest Library news, please go to our web site: [www.shrewsburylibrary.org](http://www.shrewsburylibrary.org).

\*MANY THANKS to SHREWSBURY VOTERS who approved our funding request for 2023 on March 7; we depend on you!

MANY THANKS to the intrepid volunteers and trustees who were able to open the Library right after the Big Snow!

STREAMING: Would you like the Library to provide streaming services on a few selected platforms? PLEASE FILL OUT THE SURVEY FOUND IN THIS ISSUE OF THE TIMES, and AT THE LIBRARY. MANY THANKS to CABOT SPATZ for his work surveying Mill River students about their streaming preferences! We'll make the results available next month, and consider costs and options. THANKS AGAIN to ED SAWYER for his work on this!

THE BEAUTIFUL "TREES QUILT" is on display at the Library. Please stop in to buy raffle tickets, take your chances, and support forestry books for all ages at the Library, in memory of our friend GARY SALMON.

## Coming Events:

Friday, March 31 @ 7 pm: ROBERTA HEMMER, Shrewsbury native, former Library Trustee, and now a Rutland veterinarian (lucky us!) will present a program about her recent trip to Yellowstone.

Friday, April 21 @ 7pm: LILY FRENCH will talk about "The Problem of Plastics and How We Can Help." Please see her ad in this issue of The Times.

Friday, May 19 @ 7pm: A POETRY READING with SARAH AUDSLEY, celebrating her first book, Landlocked X. Co-sponsored by SAGE.

Friday, May 26 @ 7 pm: CABOT SPATZ will discuss his term as a page at the VT State House.

## SAVE THE DATE:

Saturday, July 1 @ 3 pm: SANDGLASS THEATER will present "Oma," a puppet show for all ages, at the Russellville Schoolhouse, co-sponsored by SAGE.

## Continuing Programs:

Sunday, April 2 @ 3:30pm: WRITERS' GROUP: Poets and writers of short fiction, please join us to share your work. Please contact Penelope Weiss: [pw9@earthlink.net](mailto:pw9@earthlink.net) or Joan Aleshire: [joanaleshire@vermontel.net](mailto:joanaleshire@vermontel.net) for info.

Sunday, April 16 @ 4pm: FAMOUS BOOKS BOOK CLUB: Goethe's Faust, Parts 1 & 2. We're discussing this amazing work for another month, at least!

If you'd like to join us and need a book, please contact Joan at the e-mail above.

Sunday, April 23 @ 4pm: SCIENCE BOOK CLUB: Primo Levi's The Periodic Table. Please let Margery Salmon know if you want a print copy or an e-book.

## New Books include:

- \* *A Heart Full of Headstones*: Ian Rankin's latest Inspector Rebus mystery
- \* *Cobalt Red: How the Blood of the Congo Powers Our Lives* by Siddarth Kara.
- \* *Stone Maidens* by Lloyd Devereux Richards, the serial killer thriller by a writer whose daughter made it an internet sensation!
- \* *Half American: The Epic Story of African Americans Fighting World War II at Home and Abroad* by Matthew Delmont: Essential, eye-opening history by a Dartmouth historian.
- \* *Slough House*, the eighth book in Mick Herron's spellbinding spy thriller series.
- \* *Victory City*: The new epic novel about power and freedom by Salman Rushdie.



*The big snow didn't keep Adrienne Raymond from getting the library doors open for patrons!*





### BOOK REVIEWS

\*\*\*\*\* *Fantastic*  
\*\*\*\* *Compelling page turner*  
\*\*\* *Enjoyable*  
\*\* *Just O.K.*  
\* *Not recommended*

#### **The Water Dancer**

By Ta-Nehisi Coates

and

#### **Harriet Tubman: The Road to Freedom**

By Catherine Clinton

\*\*\*\*\*

Thanks go to my son, whose job has him driving all over the North Country of New York, for his recommendation of *The Water Dancer*, by Ta-Nehisi Coates. Reading the book took me on a journey on the Underground Railroad. Even though the book incorporates magic as it weaves the tale, I was able to accept the unreality to follow the story. The main character is named Hiram Walker, which troubled me until I learned that the name "Hiram" means "brother of the exalted one." As the outcome of the slave owner's dalliance with one of his slaves, Hiram was stepbrother to the heir of the plantation. Harriet Tubman, known as Moses, figures prominently in the book as do many of the stops on the UGRR, such as Philadelphia, upstate New York, and southern Canada.

I cared about Hiram's journey to freedom and admired his determination to return to Maryland and lead his loved ones to their freedom. I was especially grateful that reading *The Water Dancer* led me to my next book, *Harriet Tubman: The Road to Freedom* by Catherine Clinton. While I did not particularly like Clinton's style of writing, I learned a lot about Moses. After she escaped, she risked capture and returned to slave territory 13 times to lead 70 people to freedom over 10 years. She was never caught. During the Civil War she led an armed assault that freed 700 slaves in the Combahee River Raid.

As I've been writing this report, I remembered that several years ago, I read *Underground Railroad* by Colson Whitehead. I recall that in his book, Whitehead imagined a series of physical tracks built below the ground as the means of escape. I'm now wondering if the imaginary devices Coates and Whitehead employ to tell their stories are a disservice to the terrible reality of those who endured cruelty, hardship, and very reasonable fear of recapture in an effort to gain what was their right – freedom. ~Review by Sally Deinzer



### **THE NEW LEARNING PROJECT** CHOOSING TO EXPERIENCE OUR POTENTIAL

**MUSIC LESSONS -- Guitar, Piano, and more**  
**RED CROSS COURSES -- First Aid, CPR, Lifeguarding**  
**SWIMMING INSTRUCTION**  
(More services at website)

**STUDIO IN CUTTINGSVILLE VT**  
[www.TheNewLearningProject.com](http://www.TheNewLearningProject.com)  
[TheNewLearningProject@gmail.com](mailto:TheNewLearningProject@gmail.com)  
802.492.3208

**Marcos Levy**  
Instructor with over 30 years  
of Experience

In the Library section of the March *Times of Shrewsbury* we announced the library is looking into adding streaming services for patrons, and that there was an interest survey attached for readers to fill out. You probably also noticed that there was, in fact, no survey attached. The survey is provided in this issue. We would appreciate your taking the time to fill it out and return it to the library at your earliest convenience. You may give completed surveys to the on duty librarian or simply place it in the book drop by the front door.

### **LIBRARY STREAMING SURVEY**

The purpose of this brief survey is to see whether townspeople would use a streaming service if the library is able to offer one. Please take a few moments to fill it out, we want to know what you think.

1. If the library were to make a streaming device, such as a Roku, available for check out, would you be interested in using it? **YES NO**

2. What streaming services would you be most interested in if they were made available through the library? Examples may include Hulu, Netflix, or Disney+, or another.

**LIST:**

3. Do you currently subscribe to any streaming services or use a smart TV?

**LIST:**

4. Do you currently check out DVDs from the library? If so, how often?

**Return completed survey to the Shrewsbury Library**

# Shrewsbury Historical Society.

www.shrewsburyhistoricalsociety.com

## The sound of a train whistle in the mid 1880s

There are two anecdotes in our history book, *Shrewsbury, Vermont -- Our Town As It Was\** on page 23 and 24, that explains that in the hearts of children and even a dog, how much the times were changing with the awesome appearance of the train. On page 23 Mary Royce Nichols, a Kilburn descendant, related her excitement: "At school the teacher gave us a short recess when a train was coming in and we all rushed to the windows to see the wonderful steam cars glide along on the bank above us. What crude affairs they were to what we now ride in.

"Our first ride on the cars, shall I ever forget it? The Fourth of July so long ago. No sleep the night before, in anticipation of the great event. We started about 6 a.m. What a wonderful thing those floating palaces were to us as we went whizzing and whirring along, climbing the mountains, going through covered bridges, circling around the mountains, looking across the deep valley to the opposite side where we had just come.

"After a three hour's ride we finally landed at the distant village on the banks of the Connecticut (Bellows Falls). We saw many things of interest. The most fascinating was crossing the high bridge over the falls to another state and looking up to the high mountain that was named for our great grandfather (Mt. Kilburn in Walpole, New Hampshire), one of the first settlers of the town. Tired children we were when we were landed at home." The following anecdote was found in a Vermont Tribune continues on page 24:

"Amos Pratt, owner of the old Finney farm (located off Route 103, just past the intersection with Spring Lake Road) is also

owner of the sagacious old dog 'Pete', a cross between the Newfoundland and shepherd. He not only drives the cows to

and from pasture, and keeps an eye open for every tramp that passes (often sampling the seat of their trousers), but goes every morning about 100 rods across lots, when the 7 o'clock morning train from Rutland passes, and gets the morning papers that are thrown off by the conductor. When the whistle sounds at the crossing, about half a mile below, old 'Pete' starts, and intercepts the train as it passes in rear of the house."

\* The history book mentioned in first paragraph (*Shrewsbury, Vermont -- Our Town As It Was*) can be ordered and picked up by appointment. The book is \$20. By mail, add \$9 more. The museum is closed for the winter at present. Email me for more info. [ruthcon1@vermontel.net](mailto:ruthcon1@vermontel.net).

## The sound of a train whistle in the 1980s

Con and I were new residents in the early 1980s and when we heard of an offer given by the current railroad that still passes the hamlet of Cuttingsville in the town of Shrewsbury, that the town was invited to join a ride from the site of the old railroad station for a day long trip to Burlington and back, we jumped at it. Along with neighbors Brigham and other friends, my parents and Con's Mom, we happily climbed on board for a wonderful sightseeing tour of our state. I enjoyed waving to the people in cars who were stopped by the barriers whilst we passed, and the scattering of many deer, and the sight of Lake Champlain at its destination was just as awesome as to the children of the 1880s. However, this train also had a snack bar and a bar to hold us until we reached Burlington. I must also confess that I enjoyed the best Bloody Mary I ever had! One car held folks from Spring Lake Ranch and they entertained by playing their guitars and singing as we rode along. It was also a steam train, hence coal dusted our skin and hair. And the worst part was stepping on a stool to climb up into the train or down onto the ground.

## Small Farm Flavor & Quality



Come and try our pure Vermont maple syrup and see the small farm difference. Bring a cooler and stock up on our Vermont Beef and Pork.

GIFT CERTIFICATES AVAILABLE

### Farm Store Hours:

Wednesday - Monday - 10 am - 5 pm  
CLOSED Tuesday - Call for appointments

### Directions From:

Rutland: Left off VT RT 103 just 2.5 miles - on the right  
Cuttingsville: Just 2.1 miles up Town Hill Rd, right on Lincoln Hill



2450 Lincoln Hill Road, Shrewsbury VT. 05738

[SmithMapleCrestFarm.com](http://SmithMapleCrestFarm.com)

802-492-2151

[maplecrest.info@gmail.com](mailto:maplecrest.info@gmail.com)

**We Ship Syrup All Over The USA**

## Historical Society's first meeting of the year

The first meeting of the Historical Society will be  
**Sunday, May 21, 2023, at 3pm**  
at the Museum.

~Submitted by Ruth Winkler

Isn't it your time to Thrive?  
Celebrating 23 Years!

**Thrive Center**  
OF THE GREEN MOUNTAINS

**Chiropractic Care • Therapeutic Massage**

**Holistic Health Education**

**Stress Reduction Products**

**Nutritional Supplements • Coaching**

**802-446-2499**

68 South Main Street • Wallingford

[uthrive@vermontel.net](mailto:uthrive@vermontel.net) • [thriveinvermont.com](http://thriveinvermont.com)





### Stone's Throw Farmstead

We had been talking about moving to Vermont and starting a farm ever since we met in 2016 in Maryland, where we both grew up. Jess attended Green Mountain College and always wanted to move back north after she graduated, she even applied for a job at Spring Lake Ranch in 2017, but decided to stay in Maryland a little longer. We finally made the move to Hinesburg in December 2021 to manage a flower farm in Charlotte while we looked for farmland of our own. While we originally focused our search for land in Chittenden County, we started to realize that the real estate market was much too competitive for us to find a place with everything we were looking for in our first property. Proving that scrolling on Zillow can pay off, we discovered this sweet little farm in Shrewsbury. Walking on the land for the first time brought to life all the details and dreams we had coveted in a notebook for years. After the tour, we visited Pierce's and then we really knew it was the place for us to plant our roots.

On our first date in 2016, we described the farm we both wanted to have some day and we just moved onto it last summer. We feel very fortunate to have stumbled into this community because it embodies the characteristics of Vermont that originally drew us here. We cherish Vermont for its abundant wilderness, the vibrancy of its small-town communities, and all the support Vermont has for its farmers.

We are excited to share with our new community the vegetables and flowers we will grow here. This year, most of our vegetables will support the Vermont Farmers Food Center's Farmacy program - a prescription CSA for folks with diet-related illness. But we'll plan to keep the fridges stocked at Pierce's and in our own farm stand. We have lots of dreams to manifest here, but will focus our energy to build up the farm business first.

We loved attending the live music in the summer at the Meeting House, our first sing-a-long at the Russellville School house, and exploring the trails on Old Plymouth Road on our first sets of cross-country skis. We extend a heartfelt thanks to all those who have welcomed us and extended invites to get better connected here. We look forward to getting firmly rooted here!

~Article by Jess and Connor Self

### "The Blue Hubbard Seeds Heist"

I must say I tried to save some Blue Hubbard seeds from the squash last fall but they were air lifted and completely disappeared last November and today I found them. Somehow, something stole all of them that I had and was drying for future plantings.

Here is the story: Last May I planted, by direct sowing a few hills of Blue Hubbard squash seeds. Through their growing season they really took off into giant trailing plants over 40 feet in length. The plants eventually developed a few good-sized squashes weighting between twenty to forty pounds.

After harvesting the few, I decided it was time to enjoy some, so I took the 40 pounder outside, wrapped in a cloth and WHAM, dropped it onto the ground to break it up. I collected the pieces and separated the seeds



from the squash pulp then cooked the pieces in a few batches. Remember, a 40-pound squash is a lot! It tasted great and has served plenty!

I decided to save the seeds from that 40 pounder because of who it came from. The seeds were placed on a tray on the floor, so they could dry, now this was a Sunday on November 6. Monday I had errands to do and on my way home I recalled THE SEEDS! I did not look where they were on the floor in the tray until I returned home and saw the tray empty! Whoa! where did they go?

I know for sure they were not ready to be packed for winter and I did not move them, period. All the while since then I kept looking for them over and over again, maybe in all the wrong places? SO, I decided to look where I did not look.

Today being March 19, I thought how would some fur trim look on the upper edges of my LL Bean Rubber/ leather boots? I went in the mud room, picked the right foot boot up and saw it was cover in mud and old grass and some white seeds dumped out! What?



Yeah! All of the 257 Blue Hubbard Seeds stuffed in the toe of that boot, now a wee bit covered in natural mold, maybe penicillin mold due it being Green. All along the stories back and forth thru this past winter, is the house is going to be entangled in Blue Hubbard Squash Plants Like Jack in the Bean stalk, the mouse, is having a field day teasing me along and finally the missing Blue Hubbard seeds discovered. They must have had a Brigade doing the work!

I am growing them again this season too! I can say that the squash plants are still in the daytime and then start creeping everywhere at night time even into the woods over blackberry canes which make great supports. My Family members have grown Blue Hubbards since the 1940's in A Victory Garden!

~Article by Lavinia Seide

## The Shrewsbury Community Church



Compiled by Sue Ransom-Kelley



All are welcome to join us any Sunday at 10:30am at the center church which is on the second floor of the Shrewsbury Meeting House. This month we will be decorating with Lilies for Easter. Come and enjoy the beautiful music, hear an uplifting message from our Pastor, and visit with your neighbors. Refreshments served after the service. There is also a Fun Day Program for kids!

### Lesson for Farming and Life

There was a farmer who grew excellent corn. Every year he won the award for best corn. One year a reporter discovered the farmer shared his seed corn with his neighbors. "How can you afford to share your best seed corn with your neighbors when they are entering corn in competition with yours each year?" the reporter asked.

"Why sir," said the farmer, "Didn't you know? The wind picks up pollen from the ripening corn and swirls it from field to field. If my neighbors grow inferior corn, cross-pollination will steadily degrade the quality of my corn. If I am to grow good corn, I must help my neighbors grow good corn."

So it is with our lives... Those who want to live meaningfully and well must help enrich the lives of others, for the value of a life is measured by the lives it touches. And those who choose to be happy must help others find happiness, for the welfare of each is bound up with the welfare of all... (Excerpt from *Weird & Beautiful Things* Janes Doe)



**HAPPY  
EASTER!**

### Shrewsbury Prayer Shawl Group

The Shrewsbury Prayer Shawl Group will meet on Tuesday March 28 at 12noon upstairs at the Shrewsbury Meeting House. (The April meeting date has not been set, so give contact Roxanne) All are welcome to attend! Dessert, coffee, and tea will be served. Bring a bag lunch if you would like to. If you don't know how to knit or crochet, we will teach you! Questions contact Roxanne 802-492-3675; roxramah@gmail.com or Sue Keeley 802-779-4825.

### Shrewsbury Community Church Calendar

- Saturday, March 25: Family Pancake Breakfast 8am-12noon Shrewsbury Meeting House.
- Tuesday, March 28, @ 12noon Shrewsbury Prayer Shawl Group meets upstairs at the Meeting House. All are Welcome!
- Sunday, April 2, @ 10:30am Fun Day Program for kids. Palmß Sunday Worship Service with Holy Communion led by Wendy Savery.
- Sunday, April 9, @ 10:30am Fun Day Program for kids. Easter Worship Service led by Wendy Savery.
- Sunday, April 16, @ 10:30am Fun Day Program for kids. Worship Service led by Wendy Savery.
- Saturday April 23, @ 10:30am Fun Day Program for kids. Worship Service led by Wendy Savery.
- Sunday April 30, @ 10:30am Fun Day Program for kids. Worship Service led by Wendy Savery.

### Community Food Shelf

Free Community Food Shelf at the Library in the front entry way. Those in need are welcome to help themselves any time the Library entryway is open. Limited hours are:

Mon 10am-12noon; Tues 7-9pm; Wed 10am-5pm and 7-9pm; Thurs 7-9pm; Fri 10am-12noon; and, Sat 10am-12noon.

We have our additional Summer Food Shelf on the side porch at Pierces Store in North Shrewsbury. Those in need are welcome to help themselves.

**Food Delivery and Assistance** If you are unable to get to the Food Shelf at the library in Shrewsbury, we will deliver groceries to you. If you need items which are not available on the shelf we can provide grocery gift cards. Call Karen at 802-558-5991 or Sue at 802-779-4825 or 802-492-3738.

### Community Needs

- Wedding, Funeral or Memorial Service Requests: Contact Donna Smith 802-492-3367; or Sue Kelley 802-492-3738, 802-779-4825
- Community Helping Hand Requests: Contact Donna Smith 802-492-3367; Sue Kelley 802-779-4825, 802-492-3738; or Karen Lorentz 802-558-5991. Shrewsbury residents experiencing financial hardship. Assistance can be given for basic needs (food, heating, gasoline, etc). If you or a neighbor are in need, please let us know!





"Dad " Gary Arthur (left) and John Hogan (right)



### SNO-BIRD NEWS

Well...we finally received some decent snow in March so the season will get a boost to continue hopefully in to April. We have been grooming heavily to keep up with the storms and the heavy traffic. They are the best that they have been all season. It does look like the temps are going to be too warm for the next two weeks to groom too much. It does have to get down below freezing or the snow will stick to the drag and not move around in it and drop into the low spots. You can go if it is freezing and just starts to warm up a bit and things work well, but if the snow is soggy and sticky it has to firm up before you can go out.

As I mentioned last month, we are trying out new operators, Scott Pinkham was out one time for a short run this month. Dad did make his goal of grooming when he was 90. He was out three times doing most of the trail system each time.

Dad took John Hogan with him every time and started training him on the second trip. After the third trip Dad feels the John is ready to get out on his own. I asked John after they got back the first time if Dad did ok as it is a long day for anyone and he said he was and I quote: "He was on his A game all day." I just wanted to make sure it was not too much for him at his age, and it was good to hear.

I am pretty sure that Scott Ryan is willing to become an operator also and we will be working on that as he has put in some long hours with me in the groomer this year, but they were just not good conditions to start training him. He has driven before but I ran the drag from the passenger seat.

What we look at is some one that pays attention to details like, correct speed and drag depth so the trails come out as good as they can be. The drag is not a set it and forget thing you have to keep adjusting for different conditions. Also keeping track of the groomer, look for leaks, or anything else that might need attention when you take a break or stop at our many gates that we have to open and close every time we go thru. My motor is drive it like you want to work on it and most people do not want to work on it so be nice to it. I think that is why we still have the same front tracks that came on it in 2006.

We have had lots of great reviews on how smooth our trails have been since we finally received some decent snow to work with. It is hard to believe the season is coming to a close just when things are looking nice. The season ends April 15.

If you ride, cross country ski, snowshoe, or walk on our trails we hope that your time out there was good and we hope to see you all out there again next year! Thank you every one that has helped with long hours to keep our trails maintained this winter for all that use them. ~Article by Roy Arthur



## Shrewsbury Conservation Commission Bird Walk!

**Saturday, May 13 @ 9:00am  
at Jockey Hill Farm**

Connie Youngstrom and Linda Shelvey, long time birders, will lead a walk to listen and observe birds at the height of breeding season. They will talk about birding apps for your phone, guidebooks, local hotspots and how to use Ebird. Enjoy springtime in the woods with these two birders and enhance your bird identification skills!

Jockey Hill Farm is located on Coldham Rd. From Northam, take the Upper Cold River Rd. and a mile north take a right. Park at the end of Coldham Rd.

9:00am--Rain or shine!

## Let's Talk About Plastic!

Are you concerned about  
plastic pollution?  
Do you wish you could help reduce  
plastic waste?



Please come to the

**Let's Talk About Plastic Program**  
**Shrewsbury Library**  
**Friday night, April 21 at 7pm**

for a presentation and conversation about this  
growing problem and some possible solutions.

Lily French will share some video footage,  
resources for interested parties, and many  
samples of alternative products that contain no  
plastic or plastic packaging.

Bring your ideas and share what you are doing  
in your own home  
to cut down on plastic in our environment.

## RIVERWOOD LAWN CARE, LLC

Fully Insured

**Patrick Angstadt**

**802.770.0433**

**riverwoodlawncare@gmail.com**

**Mowing, Trimming**  
**Spring and Fall Cleanups**

**FREE ESTIMATES**



### Bone Builders

10am - 11am

Every Tuesday and Thursday  
at the Meeting House on Lottery Road  
Free weights and Instruction

Join us to improve your  
Bones, Balance, and Strength



2450 Lincoln Hill Rd.  
Shrewsbury Vt 05738



### Small Farm Flavor & Quality

Try our pure Vermont maple syrup and see  
The small farm difference.

Bring a cooler, stock up on our  
Grass-fed Beef,  
Pork, Sweet Treats and Spices!

Store Open Wed thru Mon 10am To 5pm

**We Ship Our Syrup All Over The U.S.**

SmithMapleCrestFarm.com maplecrest.info@gmail.com

### WIRENUTS ELECTRICAL LLC

bbates@vermontel.net

**REBECCA BATES**  
**LICENSED**  
**ELECTRICIAN**  
802-492-3406  
802-353-4376





## SHREWSBURY MOUNTAIN SCHOOL

### Important Dates:

**March 26:** Deadline for PTO Fundraiser Candy Sale

**March 27:** MRU Student Panel visits SMS 6th graders for Q and A and activities.

MRU Principal, Kaelyne Thompson, is committed to working together with elementary school principals and 6th grade teachers to ensure a smooth transition into 7th grade at Mill River Union High School.

### Upcoming events:

- **May 24:** 6th Grade Family Night: 6th graders and their families will join Mill River Middle School staff for a meet and greet. Pizza will be provided and families will get to hear from MRU teachers about important information for next school year!
- **May 26:** Step-Up Day: 6th Graders visit Mill River Union 11:30am-2:45pm

### PTO Candy Fundraiser: Please support SMS!

1. Visit [vermontnutfree.com](http://vermontnutfree.com) before March 26th and fill your cart with yummy goodies!
2. Then (important!) enter code SMS23 at checkout in the space marked "gift card or discount code."
3. Orders will ship directly to the address you input online.

### Partnership with Shrewsbury Conservation Commission (SCC):

We are very grateful for the SCC and their partnership in extended learning experiences for our students and families. We had a huge turnout for the Bluebird Box Building event on March 11. Students and families learned about bluebirds from expert Ms. Anna and were guided by Peter Grace, Grace Brigham and many other SCC members in building their own box for their backyard. So much fun was had by everyone! Thank you, SCC!

**Four Winds:** Special thank you to our Four Winds volunteers that have been leading our students in extending learning opportunities that have been very meaningful about nature and the outdoors! Thank you for all your time and dedication to our students and our school! If you would like to volunteer for this program, please contact me!

**After School Program:** Ms. Linda and Ms. Ella lead our after-school program and we are thrilled to see the fun learning that our students are enjoying!

*Kristin Cimonetti, Principal*

802-786-3995 [kcimonetti@millriverschools.org](mailto:kcimonetti@millriverschools.org)

## Family Pancake Breakfast

with REAL Vermont Maple Syrup!



**Saturday March 25**  
**8am-12noon**

**Shrewsbury Meeting House**  
**88 Lottery Rd, Shrewsbury, VT**

**\$6**  
**(Children under 6 free)**

**Hosted by Shrewsbury Community Church**  
**Benefit: Shrewsbury Community Sharing Project.**

**Enjoy Smith Maple Crest Syrup on our pancakes. Jump on a free hayride to their sugarhouse right across the road!**



### Celebration Event

The Music in Our Schools Celebration Event at Mill River Union was a HUGE SUCCESS! We had our student musicians from 5 schools come together and make the highest quality music! Two audiences of elementary school students and community members filled the MRU auditorium to hear about the incredible music program offerings of our school district!



## Shrewsbury Conservation Commission

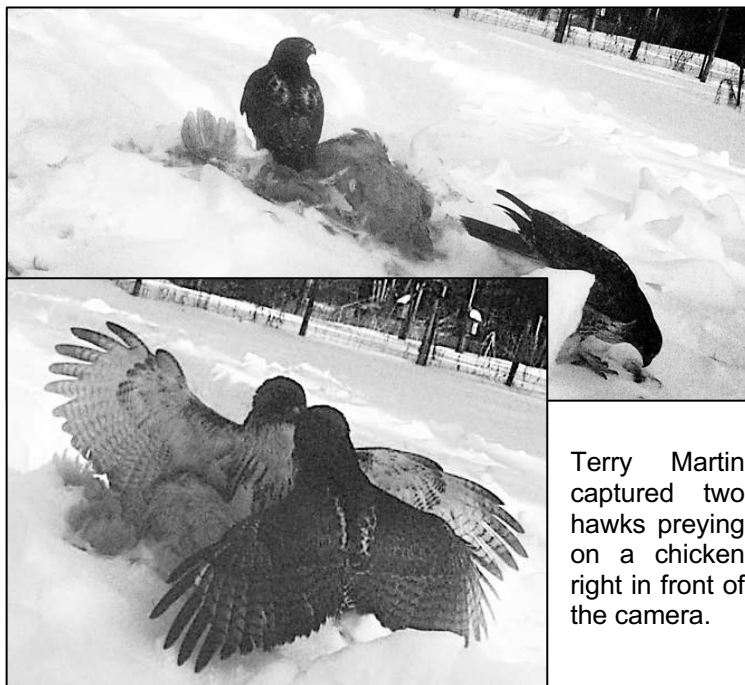
### Trail Camera Picture of the month



This month we have captures of a bobcat and a fisher from Diane Jakobsen. The fisher is stopping by a hemlock sapling and straddling it to leave scent. The bobcat and other wildlife are attracted to this area by the fisher's scent marking.



Michelle Green, Taylor and Todd Frederick have a mink pair visiting their pond. They set their camera low on the route the mink use to access the pond. Mink are really fast and hard to capture. Their pictures are the best I've seen. You can even see the mink's whiskers!



Terry Martin captured two hawks preying on a chicken right in front of the camera.

You never know what you're going to find when you check the camera's SD card!! If you have a picture or track to share email Linda Shelvey Lpurdyshe@gmail.com



### Mid-Winter Trip to Yellowstone Program presented by Roberta Hemmer Friday, March 31, 2023 7pm Shrewsbury Library

What happens when two veterinarians (an aunt and her niece) travel to Yellowstone in mid-winter? They enjoy the park's famous thermal features with no other visitors in sight, and experience its wildlife in a unique way. From viewing wolves via spotting scope on an -41° day, to observing 7,000 elk from the back of a sleigh, Roberta Hemmer of Shrewsbury and her aunt Pam Lea from New York agree it was a memorable trip. Roberta will be sharing photos and memories of her January 2023 trip at the Shrewsbury Library Friday March 31 at 7pm. Hope to see many of you there!

### NATURE'S TURN, LLC



Gerry Martin

998 Lincoln Hill Road, Shrewsbury, Vermont 05758

1-802-492-2244

[naturesturn@yahoo.com](mailto:naturesturn@yahoo.com)

Times of Shrewsbury  
online at

[www.shrewsburyvt.org](http://www.shrewsburyvt.org)

&

[www.shrewsburyhistoricalsociety.com](http://www.shrewsburyhistoricalsociety.com)



## Vermont Actors' Repertory Theater

Vermont Actors' Repertory Theater will produce "Going Up the Country", a play based on the book by Yvonne Daley. Production dates are April 28-30 and May 5-7. The theater is located in the West Rutland town hall. There is a lovely, comfortable theater on the second floor. Please go online to Vermont Actors' Repertory Theater for more details. ~Submitted by Nancy Ellery



88 Lottery Rd Shrewsbury, VT

## SHREWSBURY MEETING HOUSE CONCERT SERIES 2023

CONCERTS IN THE BEAUTIFUL OUTDOORS

Please bring a CASH contribution and your own seat. Picnics encouraged.

Your contributions benefit the musicians and the historic Shrewsbury Meetinghouse.

For more info, please call Vicky or Paul at 802 492-3649

**Concerts on FRIDAYS 5-7pm**  
**Rain dates are on SUNDAYS**

| DATE   |                | Rain<br>Date                                          |
|--------|----------------|-------------------------------------------------------|
| JUN 16 | FAUX PAWS      | RAIN OR SHINE<br>Concert will be<br>Inside if raining |
| JUN 30 | SATYRDAGG      | JUL 2                                                 |
| JUL 14 | LUMINOUS CRUSH | JUL 16                                                |
| JUL 28 | MOOSE CROSSING | JUL 30                                                |
| AUG 18 | PANHANDLERS    | AUG 20                                                |
| SEP 1  | SPINTUITION    | RAIN OR SHINE<br>Concert will be<br>Inside if raining |

Find us on Facebook for more info



While Vermont Fish and Wildlife generally recommends people only put bird feeders out from December 1 through March 31, variable winter weather can sometimes dictate that birdfeeders should be removed even during this period. A good rule of thumb is that if it's generally "wintery" out for an extended period of time, with consistent snow on the ground and temperatures at or below freezing, you can keep your birdfeeder out.



## DEAR MOTHER EARTH An Advice Column

### Dear Mother Earth,

I recently traveled to Florida for a winter vacation. Because I have been reading your articles, I decided to open my eyes and look for plastic waste and/or microplastics on the beach. I was so shocked by what I saw! The sand seemed to be one quarter plastic and three quarters sand. Thousands of tiny bits of color unfolded at my feet as I walked on the beach and kicked the sand - blue, white, green, yellow and red bits of micro plastics! I was shocked to see so much of it. And this was only the tiny broken-down pieces, there were also many larger pieces of plastic abandoned on the beach - snack wrappers, plastic bags, forgotten pails and buckets, pieces of broken umbrellas, lost "plastic" articles of clothing (think polyester shirts and nylon bathing suits). How can this mess ever be cleaned up? Where is the consciousness of the people? Has everyone just given up? I realize we can't undo the damage that has already been done, but certainly we must reverse this trend or suffer, what I can only imagine, will be dire ill effects for all of us. ~Disillusioned Beach Walker

### Dear Disillusioned Beach Walker,

I am sorry that your image of a pristine beach has been shattered! But it is true, our beaches, oceans and seas now contain billions of particles of micro-plastics and nano-plastics (smaller than micro-plastics). According to a study reported by the Ocean Cleanup Foundation, every portion of the oceans are polluted, from the surface to the floor, and on every part of the Earth. Even though there was some glass and wood found in the sea, 99.9% of the pollution was plastic. Even worse is the amount of plastics scientists are finding in the sediment at the bottom of our freshwater lakes that have no outlet to larger bodies of water.

Unfortunately, even the most remote lakes and seas are heavily contaminated with plastics because nano-plastics are easily carried by the wind and dropped on land in the rain. This pernicious nature of plastics is contributing to illness and hormone changes in both animals and humans. How can we remain hopeful and helpful given the current statistics?

Please lobby your legislators to pass stronger anti-plastics bills, especially laws that eliminate single use items and force companies to change their packaging to plant-based materials that contain no plasticizers and that naturally biodegrade. Innovators are already making packaging from corn starch, potato starch, seaweed (edible packaging!), molded fiber, grass cardboard, and seeded packaging that can be planted for new life! Some progress has been made, but so much more is necessary. Clean-up proposals often simply propose to move the plastics from point A to point B (e.g. from ocean to land).

Plastic use and production simply must be reduced. There is no other option. We cannot recycle our way out of this, or effectively clean-up what is already here. So... change your buying habits! There are now so many excellent plastic-free options available to consumers including: bar shampoo and conditioner for every hair type, chewable toothpaste bits, laundry sheets or pods, powdered bathroom cleaners in paper bags or cardboard containers, hand soap in beeswax pods to mix with water at home, wool and silk clothing, sustainably made toys, glass storage containers, reusable cotton produce bags, etc. It may feel like a drop in the bucket, but every little bit truly does make a difference. If more people face each day with the goal of avoiding plastics and demanding less plastic in their products, something will have to change. Humans do have the power to affect change. ~Be loud! Mother Earth



### Russellville Schoolhouse Winter Season

The last community music jam at the Russellville Schoolhouse for the 2023 winter season was held March 11. Sponsored by SAGE, the nights featured local musicians and music enthusiasts gathering to share songs as well as stories and laughter. Music brightens the long nights, and making music with the Shrewsbury community (and beyond) gave the evenings an especially warm glow.



*Sketch by Maria French*

Over 40 people attended the music jams this year! If you are interested in being on an email list for future events, please contact Lisa Gardner at [findinglisag@yahoo.com](mailto:findinglisag@yahoo.com). Estimated start time for next season is early December 2023. Music brightens the long summer days as well; may you find songs to share with your friends, family, and community year-round!

To brighten this sugaring season, have a listen back to our Sugaring in Vermont episode of our Root Words podcast. We spoke with Jesse Lawyer, a citizen of the Missisquoi Abenaki tribe and an accomplished chef about his experience practicing experimental archeology for sugaring in an older style with hand-made seamless birch sap buckets...

"...You can in fact do it... I do it the hardest way first, I think it will bring me closer to kind of walking in my ancestors footsteps. To see what they had to go through. It's just it's nice to be able to see what our ancestors had to go through for a meal. At times during the spring months and into the summer, the maple sugar that was produced ... was boiled down to past a point of syrup into sugar and packed in birch bark cones and that sustained energy stores in your body for quite a while after."

You can find the Root Words Podcast on podcast directories on our website, YouTube, and [vermontfarmersfoodcenter.org](http://vermontfarmersfoodcenter.org).

*~Submitted by Lisa Gardner and Stephen Abatiell*

SAGE, Shrewsbury Agricultural Education & Arts Foundation, began in 2012 as a non-profit organization to promote traditional and innovative agriculture. We added support for the arts to our mission in 2020. We sponsor workshops, concerts, spoken word readings, and more in the Russellville Schoolhouse. For more information about SAGE: contact Stephen Abatiell at [educate.sage@gmail.com](mailto:educate.sage@gmail.com), Joan Aleshire at 492-3550 or visit [www.sagevt.wordpress.com](http://www.sagevt.wordpress.com). Follow us on Facebook for up to date event details at Shrewsbury SAGE and find our sustainability and arts videos on YouTube.

~~~~~

### REINBOW RIDING CENTER NEWS

Here are two fun facts. It's not the temperature that triggers shedding in our furry friends, but the amount of daylight. Longer days, sleeker horses. #2. Eating hay keeps horses warm in colder weather by generating body heat as they digest the hay. As you can see, these guys sure do like to eat.

March 20 marked the first day of spring but the size of the snowbanks along the roadways would indicate otherwise. There are signs of spring—longer days, muddy roads and sugar makers boiling sap. Shedding animals is another sure sign it's on the way, and we are anxiously awaiting the time we can begin hands on training sessions with our volunteers in order to get ready for the new season. We kicked off the volunteer search in February with a successful Q&A clinic. If you missed it or couldn't attend on that day, please reach out and let us know you might be interested so we can answer your questions and let you know about our future training sessions. Volunteer Orientation will be held Saturday, May 6, 10am -12 noon at Rainbow Riding Center in Belmont and will be another chance to sign up.



No horse experience is necessary as there are many other ways to give us a hand. So, if you're interested in different aspects of volunteering other than horses or want to learn about horses, please give us a call.

Please check out our new website: [rainbowridingcenter.org](http://rainbowridingcenter.org) and follow us on Facebook or Instagram @rainbow\_riding\_center. Contact us at [programs@rainbowridingcenter.org](mailto:programs@rainbowridingcenter.org) or 802-236-2483 to inquire about our programs and lessons. For information about opportunities to volunteer with us contact [janetupton@rainbowridingcenter.org](mailto:janetupton@rainbowridingcenter.org). *~Janet Upton*



ENGEL & VÖLKERS®



You have what others dream of.

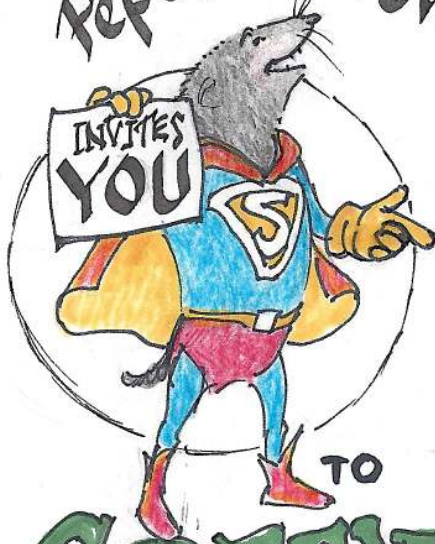
WE KNOW HOW TO SELL IT BEST.

Engel & Völkers Okemo  
126 Main Street, Ludlow, VT 05149 +1 802-975-0338  
[okemo.evrealstate.com](http://okemo.evrealstate.com)

©2023 Engel & Völkers. All rights reserved. Each brokerage independently owned and operated. Engel & Völkers and its independent License Partners are Equal Opportunity Employers and fully support the principles of the Fair Housing Act.



Pepé le Shrew



TO

# GREEN UP DAY 2023

① 8-10 AM  
MEETING HOUSE  
BREAKFAST

- A. CHOOSE YOUR ROAD
- B. TAKE BAGS ★★
- C. GET A RAFFLE TICKET

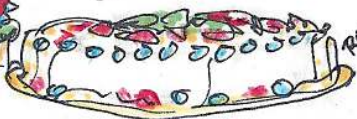
② **GREEN UP!** PLEASE PUT RECYCABLES  
IN ONE BAG, TRASH IN ANOTHER

♥♥ PLEASE WEAR GLOVES ♥♥

③ 10 AM ~ NOON BRING COLLECTIONS TO  
TRANSFER STATION



BREAKFAST  
8-10 AM



RAFFLE  
PRIZES

★ SHREWSBURY CONSERVATION COMMISSION ★

WE HAVE DONE THIS  
FOR YEARS,  
AND WE DO IT WELL  
TOO.

IN THE SPRINGTIME  
WE GATHER  
THE STUFF SOMEONE  
THREW  
BY OUR ROADSIDES  
AND RIVERS AND  
"CONVENIENT" PLACES.

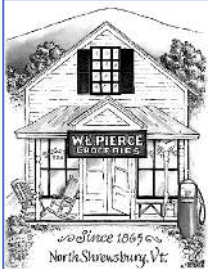
CAUSES Pepé le Shrew  
TO MAKE  
**TERRIBLE FACES!**

COME, HELP US  
**MAY 6<sup>th</sup>** PLEASE,  
AND ALL THE YEAR THRU  
**OUR TOWN**  
CAN BE TRASH FREE,  
MORE BEAUTIFUL, TOO.



NEED YOU TO DRAW THESE. REALLY TERRIBLE, PLEASE. **THANKS!**





## NEWS FROM PIERCE'S STORE 802-492-3326

Bob Knudsen, Manager

### Shrewsbury Cooperative at Pierce's Store Annual meeting April 12 at 6:00pm at the Meeting House

Members will receive reports on the financial standing of the store, the year in review, and plans looking ahead. Members must be present to vote and we need a quorum to complete our business. See you there!

Springtime is here, but don't be fooled: Plenty more cold and snow to come! But that's what soup and coffee is for, right?

#### HOMEMADE FOODS IN THE STORE

We are well under way in making our own foods in store alongside the hot soup from Screamin' Ridge Farms. We are doing sandwiches a couple of times per week, and since we are doing them ourselves, it makes it easier to ensure we don't run out as often. We have also now added breakfast sandwiches into the rotation, so hopefully you have a hankering for some egg sandwiches! We also have a trial mix that we are blending ourselves with select ingredients from multiple vendors that has been a huge hit, so be sure to check that out if you haven't yet.

#### SPRINGTIME TREATS AND EASTER GOODIES

The special Easter Egg chocolate tins are back! This year, we have the Rock n' Roll ones to add to your collection if you love chocolate and festive fun things. If you are more interested in shorter term treats, we are getting the traditional bunnies and eggs as well. Not an Easter person? No sweat, we have a ton of other chocolates and candies available, and we are now doing candy by the bulk if you buy 1- or more pieces.

#### CANDLES, GIFTS, AND SOUVENIRS

Have you seen our massive Danica Candle selection? We have scented votives, tapers in several colors, as well as beeswax in both taper and votive options. Our consignment shelves are also chock full of the best locally crafted items that your neighbors have made right here in Shrewsbury. We also have a huge new line of greeting cards to send to your friends and family near and far.

#### FEATURED ITEMS

We are starting a new promotion that will have featured items each month that will have additional discounts and special deals available, as well as a few that are just very popular that people want to have featured. The first item is the Barbara D'Alba wine that we managed to get at a massive discount. We are selling it for \$19.99, while the regular price is closer to \$30! Not a wine drinker? No worries, plenty of other items will have their time in the sun as well, keep an eye out, and if you come across something you would like to recommend, please feel free to let us know!

#### SPECIAL ORDERS

Did you know that most of the items we carry can be special ordered for a substantial discount? If you are in the market for an item that you use regularly and wouldn't mind buying a case (or splitting one with a friend) you can save a ton of money by letting us know. Coffee, foods, specialty items, household goods, wine, and even meats can be purchased this way. If you aren't sure, don't be afraid to ask!

#### BABY TIME



In case you have not yet heard, Bob and Hallie are expecting in late May! While I am expecting to step away from the store for a brief paternity leave, fret not, we have the greatest set of employees and volunteers available who are well trained and eager to keep the store running as smooth as ever while I am out for a couple of weeks. If you would like to be added to the list of volunteers who can help with coverage or ordering, please let me know and I will be happy to get you trained up! Who knows, maybe you'll like it so much you'll want to continue – it's can be addicting!

~Bob Knudsen

#### MORE Alternatives to Cabernet Wine Tasting April 14

The previous 'Cab Killers' tasting at Pierce's Store was a big hit so we are following up with another exploration of great varietals with similar qualities to the mighty Cabernet Sauvignon. The goal is to find some tasty wines that are good values because they are off the beaten path. We'll be savoring some lesser-known reds from Italy including Aglianico, which has been called the 'Barolo of the South' and Lagrein, which is an uncommon variety from the Italian Alps. We'll also try some Montepulciano, a very drinkable, flexible wine from Tuscany. All bottles under \$20. Join us at Pierce's Store Friday, April 14 from 4pm to 6pm to discover some worthy wines that are kind to your palate and your pocketbook. Hope to see you there! ~Sandy Bragg



The Times of Shrewsbury  
PO Box 373  
Cuttingsville, VT 05738

PRESORT STD  
US POSTAGE PAID  
SHREWSBURY, VT  
05738  
PERMIT NO. 2

To: Postal Patron

Donors are recognized for the remainder of the calendar year in which their donation is received. The *Times* is mailed to all residents of Shrewsbury and is also available online. The cost of printing and mailing is made possible through advertising and donations and are very much appreciated, but are not tax deductible. Donations can be made to: *Times of Shrewsbury*, P.O. Box 373, Cuttingsville, VT 05738. **THANK YOU!**

Gary & Minnie Arthur  
Roy Arthur  
Nate & Angela Bailey  
Steve Banik & Virginia Gundersen  
Randell & Diane Barclay  
Mike & Elizabeth Bedesem  
John & Mary Beerworth  
John & Linda Berryhill  
Ludy Biddle  
Rich & Cynthia Biziak  
Laura Black  
Kristi & Sandy Bragg  
Virginia & Daniel Buckley  
John & Linda Calotta  
Jamie & Catherine Carrara  
Peter & Theresa Clarke  
Marilyn Dalick  
Sally Deinzer  
Phillipe & Linda Ducrot  
Nils & Pamela Ericksen  
Kathi & Tim Faulkner  
Gene & Kathy Felder  
Chuck & Luisa Finberg  
Liz Flint  
Eldred & Lily French  
Jonathan Gibson & Eliza Mabry  
Richard Gile & Sue Brown  
Mark & Carol Goodwin  
Pam & Peter Grace  
Greenhagen Family  
Barry & Barbara Griffith  
John & Betty Heitzke  
Betsy Hinckley  
Bob & Connie Hoelscher  
Carmine Iannace & Rita Gyls

Martha Herbert Izzi  
Jeffrey & Diane Jakobsen  
Jack & Betsy Jesser  
Ellen Jorgensen  
Martin Kimmig & Julia Latein-Kimmig  
Michael & Angie Lauri  
Gerry & Chryl Martin  
Padraic Martin & Alice McGarey-Martin  
Stephen & Patricia Martyn  
Taffy Maynard  
Lynn McDermott  
Jeff & Pam Monder  
Moody Family  
Jack & Joan Mulqueen  
Kay O'Dowd  
Fran Patten

George & Doris Perry  
Jack & Sharon Perry  
Roxanne Ramah  
Ed & Adrienne Raymond  
Russell & Donna Reay  
Reinbow Riding  
Helen & Andy Richards-Peelle  
Ridlon Family  
Ed & Judy Ryan  
Thomas & Donna Ryan  
Gary & Margery Salmon  
Susan Savage & Irv Gordon  
Brian & Patricia Sedaille  
Paul Sgalia & Vicky Arthur  
Alan & Linda Shelvey  
**Shrewsbury**

Conservation Commission  
Historical Society  
Library  
Volunteer Fire Department  
Bob & Sally Snarski  
Spring Lake Ranch  
Wendy Stewart  
Tim & Nancy Stout  
Paul & Sarah Titterton  
Jess & Ariane Torres  
Liesbeth van der Heijden  
Howard & Deborah Weaver  
Michael & Phyllis Wells  
Nancy West  
Christel Wiedmann  
Lee Wilson  
Winkler Family  
Mark & Connie Youngstrom



Watch for fiddle-  
head ferns in late  
April.