



Times of Shrewsbury



May 2023

50th ANNIVERSARY!

There is one place to glimpse the character and characters that have made Shrewsbury as we know it today. It has all been recorded in a publication created by and for Shrewsberries, and we have all looked for it in our mailboxes each month for 50 years! It's our local "newspaper":

Times of Shrewsbury!

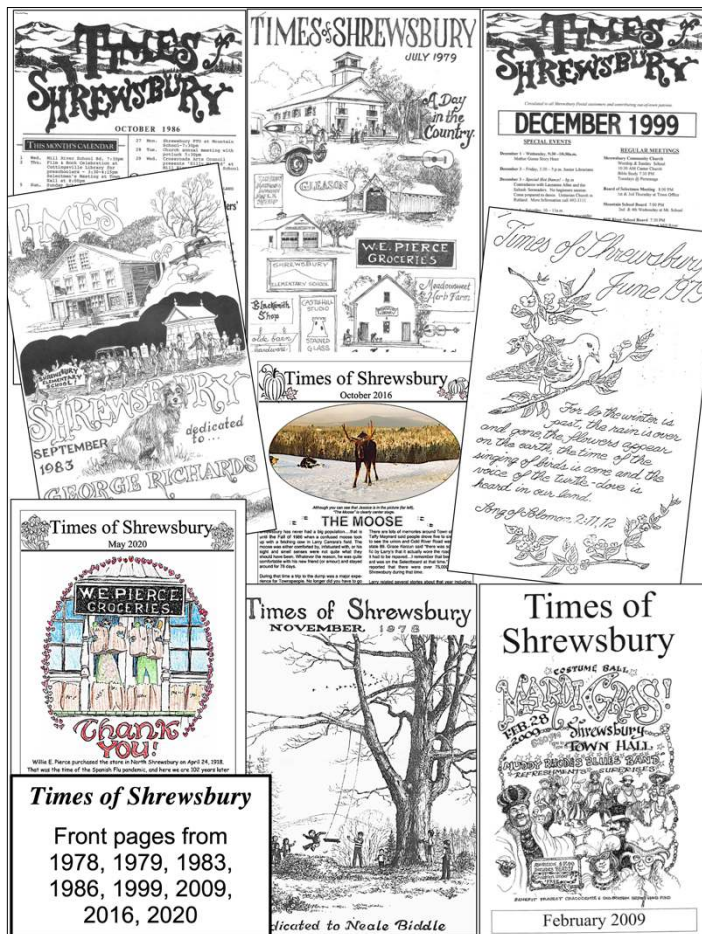
In May 1973 the *Times* went to press using landline telephones, a typewriter, a mimeograph machine, stapler, and many helping hands. It was then mailed with an 8¢ postage stamp! With a circulation of "about 200," the first issue was 10 pages (legal size) and cost \$33.40. By the second issue 20 contributors had given \$96 and the *Times* was up and running!

Initially the paper was produced on the very temperamental and messy mimeograph machine at Spring Lake Ranch and at the Shrewsbury Community Church. Then for many years it was printed in someone's home on a machine owned by the *Times*. In

December 1984 the *Times* was finally sent to a professional printer for the first time.

Front pages in the early years featured the Calendar of Events. By 1976 full page drawings by Shrewsbury artists began to "grace" the covers and continued to appear periodically until the early 1980s. The Calendar of Events again returned to the front page along with a hand-lettered banner until 1999. The current banner has been in use since 2011 and front pages have featured articles, drawings, and photos about and by Shrewsberries. For many years there were 12 issues per year but somewhere along the way the editors thought a holiday was in order so there are now only 11 issues per year!

In the third issue the first photos appeared, recording a flash flood that roared through Cuttingsville on June 30, 1973. However, photos were very sparse in the paper prior to the new millennium issues. Even colored paper and colored ink have been used. Articles have focused on many aspects of life in Shrewsbury, and have been presented in single and double columns, but always on legal size paper until March 2011 when



Times of Shrewsbury

Front pages from
1978, 1979, 1983,
1986, 1999, 2009,
2016, 2020

the paper began being printed on standard size 8 1/2 x 11 paper.

For many years there was a "Social News" section in the paper with snippets of news that seemed quite personal to be in print (i.e. hernia operation and recovery, travel plans, etc), but today we find the same information on social media to a much larger audience!

The paper is still delivered to each mailbox in Shrewsbury, but in 2011 it also became accessible "online" at the Town website. Also, the Shrewsbury Historical Society website posts all issues from 2011 to present. Special color editions about the maple sugaring in Shrewsbury, the Laurel Glen Estate, and "The Moose" are also available online.

There have been over 560 issues published in the last 50 years, and there are copies of each one stored in five boxes

at the Historical Society. Today there's no use of the mimeograph or typewriter, very little use of the telephone, and postage costs a lot more! We use an array of computer programs to produce the paper...and a lot of old-fashioned patience! In the early years it was truly a communal effort as people gathered around Neale Biddle's dining room table to collate and staple.

Today it takes fewer people to get the paper out but it still needs the information and financial support from Shrewsbury's organizations, individuals, and advertisers.

On the front page of the first edition in May 1973, the founders wrote **"it is hoped that every organization, club and individual will contribute ideas, suggestions, points of view, creative writing, questions, etc. etc. etc. Let's hear from Shrewsbury-ites what turns them on."** With that kind of continuing support, the *Times of Shrewsbury* will celebrate many more anniversaries.

Article by Chryl Martin

(This article is an updated version of an article I wrote for the 40th Anniversary in the May 2013 Times of Shrewsbury)



Preschool/ Pre-Kindergarten Registration and Universal Screening for 2023-2024 school year

What is it?

Any family that resides in the Mill River School District towns of Clarendon, Shrewsbury, Tinmouth, and Wallingford with a child 3-4 years of age. Enrollment is available on a limited basis.

**Preschool child must turn (3) years old
on or before August 31, 2023**

**Pre-K child must turn (4) years old
on or before August 31, 2023**

When?

Clarendon Elementary School
Friday, May 26th, 2023

Shrewsbury Mountain School
Monday, May 22nd, 2023

Tinmouth Elementary School
Wednesday, May 31, 2023

Wallingford Elementary School
Friday, May 19th, 2023

Contact?

**Please call Sarah Bolster, Pre-K Coordinator, at
(802)786-3998 extension 218 for an appointment.**

www.millriverschools.org

Vermont State Senators:

Brian Collamore: bcollamore@leg.state.vt.us

Terry Williams: twilliams@leg.state.vt.us

David Weeks: dweeks@leg.state.vt.us

Vermont State House of Representative:

Logan Nicoll: lnicoll@leg.state.vt.us

The Vermont General Assembly is in session January thru June. To view committee member-ships, bills that have been introduced, track each bill's progress, and review committee agendas go to www.leg.state.vt.us. During the week you can contact your legislator by leaving a message at the State House by calling 1-800-322-5616 or 828-2228 (the Sergeant-At-Arms' Office).

United States Senators:

Senator Peter Welch

www.welch.senate.gov

Vermont Office: (800) 642-3193

Washington D.C. Office: (202) 224-4242

Senator Bernie Sanders

www.sanders.senate.gov/contact

Vermont Office: (800) 339-9834

Washington D. C. Office: (202) 224-5141

United States House of Representative:

Representative Becca Balint

Vermont Office: 347-461-4982

Washington D. C. Office: (202) 225-4115

Revised 1/16/23

TIMES OF SHREWSBURY

The Times of Shrewsbury is published monthly from February through December, and compiled by volunteers from material submitted by residents with the goal of informing townspeople of what is happening in Shrewsbury. The views and opinions expressed in articles are solely those of the author and not necessarily those of the editors.

All submissions must be accompanied by the name of the submitting person and are printed at the editors' discretion subject to editing for length and clarity. Letters to the Editor exceeding 350 words will be subject to editing for length. Any information piece or informational political letters (without specific party or vote appeal) will be subject to the guidelines previously described.

A writer of a letter that names a Shrewsbury resident or organization in a critical manner must get copies to the resident or organization, and to the Times by the 10th of the month prior to publication or it will not run. If the named person or organization indicates in writing to the writer and to the Times that they choose not to respond, the letter will run. If the named entity responds, the response and initial letter will run in the same issue.

There is no charge for: jokes, poems, nature reports, family event announcements, or feature articles or letters that are not commercial.

Articles and Advertisements: Deadline for submission is 5pm on the 20th of the month prior to publication; exceptions will be announced in the prior month's Times.

Ads in the Times are for area businesses, local non-profit events, and local ballot election advertisements.

Best Formats: Articles: Word or as an email message with no formatting. Photos: jpeg. Ads: jpeg or Word document.

Monthly advertising fees and relative sizes:

| | | |
|---------------|-------|------------------------------------|
| Full page | \$100 | (7.5"w x 9.5"h) |
| Half page | \$60 | (7.5"w x 4.5" h or 3.5"w x 9.5"h) |
| Quarter page | \$12 | (7.5"w x 2.5" h; or, 3.5"wx 4.5"h) |
| Business card | \$6 | (3.5"w x 2"h) |
| Classified ad | \$3 | (15 words or less) |

Payment due by the 20th of the month prior to publication.

5/1/2023

Chryl Martin

~ Rich Biziak

Times of Shrewsbury, P. O. Box 373, Cuttingsville, VT 05738

Email: shrewsburytimes@gmail.com

Online: www.shrewsburyvt.org and

<http://www.shrewsburyhistoricalsociety.com>

SHREWSBURY COMMUNITY CALENDAR

| | | |
|-------------|----------------|--|
| Apr 29 | 8:30am-12:30pm | *Household Hazardous Waste event at Rutland Town Transfer Station |
| May 6 | | *Green Up Day (8-10am Breakfast at Meeting House; Select Road and collect trash to take to Transfer Station between 10am-12noon) |
| May 7 | 3:30pm | *Writer's Group meets at Shrewsbury Library |
| May 13 | 9am | *Bird walk at Jockey Hill Farm sponsored by Shrewsbury Conservation Commission |
| May 13 | 9:30am-12:30pm | *Annual Bicycle Safety Day sponsored by Wallingford Rotary |
| May 18 | 1:30-4pm | *Ramp It Up! Spring Lake Ranch run; public invited to walk, run, or be a spectator |
| May 19 | 7pm | *Poetry reading by Sarah Audsley at the Library |
| May 20 | 7pm | *Program by Vaidehi Sangrod, Rotary Youth Exchange student who lives in Shrewsbury |
| May 21 | 3pm | *Shrewsbury Historical Society Meeting at the Museum |
| May 21 | 4pm | *Famous Books Book Club meets at the Shrewsbury Library |
| May 26 | 5-7pm | *Beer tasting at Pierce's Store with Mt Holly Brewing |
| May 26 | 7pm | *Presentation on being a page at the Vermont State House by Cabot Spatz at the Library |
| May 27 & 28 | 10am-5pm | Vermont Crafts Council Open Studio Weekend |
| May 28 | 7pm | *Science Book Club meets at the Shrewsbury Library |

*see elsewhere in newsletter for details

TIMES OF SHREWSBURY

online at
www.shrewsburyhistoricalsociety.com
 and
www.shrewsburyvt.org



Deadline for submission to *Times of Shrewsbury* is by 5:00pm on the 20th of each month.

REGULAR MEETINGS and EVENTS

| | |
|---|---|
| Selectboard Meeting | 1 st & 3 rd Wednesdays – 6:30pm at Town Office |
| Bone Builders | Tuesdays & Thursdays – 9am at Meeting House |
| Development Review Board | 4 th Wed -7pm at Town Office; check town website for agenda |
| Library Trustees Meeting | 2 nd Tuesday – 7pm at Shrewsbury Library |
| Mill River Unified Union School Board Mtg | 1 st Wed 7pm @ MRHS & 3 rd Wed. 7pm at MRHS unless otherwise warned |
| Planning Commission | 2 ⁿ & 4 th Tuesdays 7pm at Town Office |
| Religious Society of Friends (Quakers) | Sundays – 10am via Zoom; contact wildernessfriends@gmail.com |
| Shrewsbury Community Church | Sundays – 10:30am - Worship service and Kids Funday Program |
| Shrewsbury Conservation Commission | 1 st Tuesday of every month ! 5:15pm (April meeting will be virtual) |
| Shrewsbury Historical Society | May 21, 2023 @ 3pm in the Museum |
| Shrewsbury Historical Society Museum | Opens first Sunday in July, 2023 from 1 to 3pm |
| Shrewsbury Singers | Sundays 9-10:30am @ Russellville Schoolhouse (May, June, July) |
| Shrewsbury Sno-Birds | 2 nd Tuesday – 7pm at Southside Steakhouse in Rutland |
| Shrewsbury Volunteer Fire Department | Thursdays – 7pm at the Cuttingsville Station |

Shrewsbury Town Website: www.shrewsburyvt.org

| | | | | | |
|--------------------|---|---|----------------------|------------------------|--------------------|
| Clerk's Office | 492-3511 | Mon & Wed: 8:30am-12:30pm & 1:30pm-3:30pm | Tues: 7am-1pm | Thurs: 10am-4pm | Fri: Closed |
| Town Garage | 492-3656 | (Follow prompts to report roadway blockage on non-work days) | | | |
| Listers | 492-2009 | Available by appointment | | | |
| Treasurer's Office | 492-3558 | Monday 9am-11am | | | |
| Transfer Station | 492-3867 | Sunday 8am-4pm ~~ Wednesday 12noon-6pm | | | |
| Library | 492-3410 | Hours: Mon 10am-12noon; Tues 7-9pm; Wed 10am-5pm & 7-9pm; Thurs 7-9pm; Fri 10-12noon; Sat 10am-12noon | | | |
| Meeting House | 492-6050 | Reservations: 492-3361 or julanne@vermontel.net | | | |
| News Flash Email: | vtbenbeano@gmail.com or benbeano@vermontel.net an email list for uUrgent and reminder news information] | | | | |

Cuttingsville Post Office 492-3585 Window Hours Mon-Fri 7:30am-10:30am & 11:30am-2:30pm; Sat 8am-11am.

Lobby Hours Mon- Fri 7:00am-7:00pm and Sat 7:00am-4pm

Burn Permit: Forest Fire Warden Kevin Brown 802-345-8668 or, Deputy Fire Warden Al Ridlon, Jr. 802-282-3642

Animal Control Officer: Vacant (Contact a Selectboard member) 1st Constable: TBA Game Warden: Tim Carey 793-2776

Emergency Management Aaron Korzun 492-3362 Green Mountain Power outage 1-800-451-2877

Medical-Police-Fire Emergency Dial 911 Ambulance 773-1700 Rutland Hospital 775-7111 [Updated 03/20/23]

SHREWSBURY SELECTBOARD MINUTES

The Selectboard meets the 1st and 3rd Wednesday at 7pm at the Town Office.

April 5, 2023: Minutes of Selectboard Meeting

Present at meeting: Selectboard members: Aaron Korzun, Francis Wyatt, Marc Cimonetti. Road Commissioner: Jamie Carrara. Auditor: Rich Biziak.

Members of the Public: Laura Black, Bob Knudsen

The meeting was convened at 6:30 PM

Agenda: Motion made by A. Korzun to follow the agenda with the additions of Excess weight permits for James Carrara, A. Johnson Co., and Keyser Energy. F. Wyatt seconded. All in favor, motion approved.

Appointments -DRB, RRTAC: A. Korzun made a motion to appoint Alan Shelvey, Danny Coty, Greg McGown to the Development Review Board and Marc Cimonetti to the Rutland Region Transportation Advisory Committee and Jamie Carrara as Alternate. F. Wyatt seconded. Approved.

Still need Cemetery Commissioners, Tree Warden and Constable.

Liquor Licenses: A. Korzun made a motion to approve liquor licenses (First Class, Second Class, and Tobacco) for Shrewsbury Cooperative at Pierce's Store and a Special Events Permit for Liambru Tasty for the Stewart Maple Event. M. Cimonetti seconded. Approved.

Town Website: Laura Black reports that the website is online, but still needs some additions and revisions. The Selectboard authorized Laura to purchase the calendar app for \$99 that allows for recurring meetings.

A. Korzun made a motion to appoint Laura Black as the interim Administrative Assistant. F. Wyatt seconded. Approved.

Laura made note that the town website is not the primary location for file storage. We should use something like Google Drive for that.

Town Office Security: Resetting the Town Office front door key code and will disseminate to those that need it.

Excess weight permits: Fees paid and insurance in order. A. Korzun made a motion to approve excess weight permits for Fabian Earth Moving, Champlain Valley Plumbing & Heating, Beacon Sales Acquisitions, Camp Precast, Casella Construction, Keyser Energy, A. Johnson Co. and James Carrara. F. Wyatt seconded. Approved.

New Business:

Aaron Korzun made a motion for the Town to donate one \$20 and two \$10 Transfer Station tickets to be raffled off on Greenup Day. M. Cimonetti seconded. Approved.

Rich Biziak wants to schedule a time for the Selectboard and Board of Auditors to meet with the independent Auditor. Marc Cimonetti will be the Selectboard representative for the meeting.

Aaron Korzun made a motion to accept the Annual Financial Plan – Town Highways. F. Wyatt seconded. Approved.

Review Minutes: A. Korzun made a motion to accept the 3/15/2023 Selectboard meeting minutes. Seconded by M. Cimonetti. Approved.

Review Orders: F. Wyatt made a motion to approve Selectboard Orders #4 for \$5,576.07 and Road Orders #4 for \$27,429.72. Seconded by M. Cimonetti. Approved. F. Wyatt made a motion authorize a transfer of \$5,950.00 to reserve funds and a transfer of \$700.00 to Act 60 reserve funds. Seconded by A. Korzun. Approved

Adjourned at 10:36 PM

Respectfully submitted, Francis Wyatt

These minutes are unofficial until approved by the Selectboard at the next regularly scheduled meeting.

~~~~~

### April 19, 2023: Minutes of Selectboard Meeting

**Present at meeting:** Selectboard members: Aaron Korzun, Francis Wyatt.

**Members of the Public:** None

The meeting was convened at 6:34 PM

**Agenda:** Motion made by A. Korzun to follow the agenda with the additions of: liquor license for Rustic Rooster, excess weight permit for Wisells Earth Moving, NIMS adoption, Letter of intent for Municipal Roads Grants-in-Aid Program. F. Wyatt seconded. All in favor, motion approved.

**Appointments -DRB alternate:** A. Korzun made a motion to appoint Ryan Fitzbeauchamp as alternate to the Development Review Board and Eldred French as Tree Warden. F. Wyatt seconded. Approved.

**Excess weight permits:** Fees paid and insurance in order. A. Korzun made a motion to approve excess weight permits for Steve Newton, Amerigas, and Wisells Earth Moving. F. Wyatt seconded. Approved.

**Liquor License:** A. Korzun made a motion to approve a third-class license for spirits, first class for malt and vinous beverages, and outside consumption permit for Rustic Rooster LLC. F. Wyatt seconded. Approved.

**Town Website:** Laura Black has done a great job of overseeing getting the new website up and running.

**2023 LEMP and Mutual Aid Agreement:** A. Korzun made a motion to adopt the 2023 LEMP and NIMS. F. Wyatt seconded. Approved. A. Korzun made a motion to adopt the Mutual Aid Agreement. F. Wyatt seconded. Approved. A. Korzun made a motion to adopt the Letter of Intent to participate in the Municipal Roads Grants-in-Aid Program. F. Wyatt seconded. Approved.

**ARPA:** Aaron Korzun and Laura Black completed submitted the ARPA annual report, which is due April 30, 2023.

**Review Minutes:** A. Korzun made a motion to accept the 4/5/2023 Selectboard meeting minutes. Seconded by F. Wyatt. Approved.

**Review Orders:** A. Korzun made a motion to accept the Treasurer's journal entry changes for March. F. Wyatt

## SHREWSBURY SELECTBOARD MINUTES

(continued)

seconded. Approved. A. Korzun made a motion to authorize the Treasurer to transfer \$79,000.00 from the Equipment Reserve Fund to the General Fund. F. Wyatt seconded. Approved. A. Korzun made a motion to authorize the Treasurer to borrow from the Reserved Funds when necessary. F. Wyatt seconded. Approved. F. Wyatt made a motion to approve Selectboard Orders #4a for \$4,984.29 and Road Orders #4a for \$95,468.12 (\$79,000 is transfer from equipment reserve fund for tractor purchase). Seconded by A. Korzun. Approved.

Adjourned at 8:12 PM

Respectfully submitted, Francis Wyatt

These minutes are unofficial until approved by the Selectboard at the next regularly scheduled meeting.

*Editor's Note: The minutes have been edited for brevity but not content. For complete minutes, go to the Town website [www.shrewsburyvt.org](http://www.shrewsburyvt.org)*

### TOWN CLERK'S OFFICE HOURS ARE CHANGING!

That's right, you read it correctly! The new schedule (shown below) will go into effect starting May 15, 2023. It's been many years since there's been a permanent change to the schedule, and this decision was not made lightly. During my now two years here as Town Clerk, I have had repeated requests to include some time outside of regular business hours so people could come in to do what they needed at the office without the need to miss work, and the new schedule – in part - should help accommodate that. Also, keeping in mind that it was becoming rare to have another town official working in the office alongside me while it was open to help cover if I needed to step out for a moment, and in consideration of my own schedule, the decision was made to slightly alter the hours.

#### New Hours:

**Monday:** 8:30am-12:30pm & 1:30pm-3:30pm  
**Tuesday:** 7:00am-1:00pm  
**Wednesday:** 8:30am-12:30pm & 1:30pm-3:30pm  
**Thursday:** 10:00am-4:00pm  
**Friday, Saturday, and Sunday:** CLOSED

As always, if you absolutely can't make it in during office hours and need to physically come to the Town Office, please call or email so we can set up an appointment outside of the times listed. ~Submitted by Megan LaChance, Town Clerk

### Household Hazardous Waste Dates

If you have a Shrewsbury Transfer Station sticker displayed on your car, you can participate in the following Household Hazardous Waste event at no charge. For additional information visit: <https://rutlandcountyswac.org>

Saturday, April 29, 2023 ~ 8:30am to 12:30pm  
Rutland Town Transfer Station off Post Road Extension  
or

Saturday, October 7, 2023 ~ 8:30am to 12:30pm  
Fair Haven Transfer Station, Fair Haven Ave. off West St.

## Town Administrative Assistant

The Shrewsbury Selectboard is looking for a Town Administrative Assistant who will:

- Attend all Selectboard meetings, take minutes, and follow up on Selectboard business.
- Maintain Selectboard files in coordination with the Town Clerk, Treasurer, and other Town Staff.
- Maintain and enhance the Town's website.
- Assist the Road Commissioner with grant applications.

Part-time \$19.00/hour

A more detailed description is available.

**If interested, please contact:**  
**Aaron Korzun 492-3362**  
**[dockorzun@vermontel.net](mailto:dockorzun@vermontel.net)**

### Employment Opportunity

Town of Shrewsbury is accepting applications for  
**Road Crew member**

Work includes: plowing, ditching, road repair, roadside mowing, culvert work, chainsaw operation, equipment maintenance, and other duties.

**Benefits include 100% Town paid  
Medical and Dental insurance**

A clean driving record, CDL Class B License, and ability to pass drug/alcohol test required.

Contact Jamie Carrara @ 492-3656

**WIRENUTS  
ELECTRICAL  
LLC**

[bbates@vermontel.net](mailto:bbates@vermontel.net)

**REBECCA BATES  
LICENSED  
ELECTRICIAN  
802-492-3406  
802-353-4376**



## SHREWSBURY VOLUNTEER FIRE DEPARTMENT

With the arrival of spring maple sugaring season, many of the SVFD members were away from the direct department activities and weekly meetings, but all were ready to respond to incidents when needed.

Since the last *Times* issue, there were three responses. Two of them were for mutual aid to Clarendon, the first being a massive brush and grass fire on the Airport Road near the East Clarendon Cemetery. Along with several other departments, the SVFD provided tanker support for water and manpower to suppress that fire. Dry conditions and high wind complicated matters; but good firemanship prevailed, and the fire was contained and extinguished. A second mutual aid call came from Clarendon on April 18 in the early morning hours. This was to a fully involved trailer fire located on Route 103 behind the East Clarendon store. Several departments responded, including the SVFD. Manpower and water were provided, and the fire was put out. Unfortunately, the trailer was a total loss. A woman and her three dogs escaped. The Red Cross was contacted to help her find temporary shelter and care for her and the dogs. A third call this month was in Northam for the sounding of a carbon monoxide alarm. A quick response for investigation and to clear the building resulted in no injuries.

Interestingly, three of our new members, Hal Niblack, Mark Goodwin, and Lee Martin had attended the Southern Vermont Fire School held at Mill River Union High School the previous weekend before the Clarendon Trailer Fire. That school helped prepare them for learning to size up a situation and deal with the real fire that they wound up being involved in within just a few days. Attending local fire schools and taking coursework are great beginnings for our department members to learn the skills necessary to be prepared and respond to complicated emergency situations. Hal and Mark have been members for most of the past year, while Lee was just voted in as a full member at the April business meeting.

### Smoke Detectors:

Besides having a great fire department, the best thing for everyone in the community to think about is fire safety. Although the lady in Clarendon lost her home and her belongings, a working smoke detector saved her life and gave her the necessary time to escape the fire. Each of us should routinely check our own detectors and at least minimally install new batteries. If your detectors are over 10 years old, they should be replaced. This one action could save your life and the lives of your loved ones and pets.

### Burn Permits:

An important preventative measure for all is that **when there is no snow on the ground**, fire permits must be obtained from our fire wardens. Kevin Brown (802-775-6194) or Al Ridlon Jr. (902-282-3642) should be called to request a burn permit. They can inform you how to conduct a safe burn and what can legally be burned. If conditions are safe, they can issue the permit over the phone. If conditions are hazardous, they would ask that you wait until weather conditions for safe burning improve. Fire wardens are trained and updated as to burning conditions by

the state of Vermont. We are fortunate to have long time, experienced fire wardens in Shrewsbury, and they will be happy to assist you with your requests. Illegal, non-permitted burns are unsafe and can have legal consequences if they get out of control. Sometimes fires are reported by people who see or smell smoke. If the burns are found to be illegal, the department will respond and must extinguish the fire. Springtime can produce some very dry conditions in fields and woods, so be safe. If you need to burn brush.... call for a permit. In all cases... be aware, and be fire safe.

*Submitted by Bob Snarski, Safety Officer, SVFD*



### Free Medical Equipment

Living In Place continues to provide, at no cost, medical assist equipment that has been donated by Shrewsbury residents who no longer need them. On hand right now are many wooden crutches, adjustable aluminum crutches, walkers, rollators, commodes, shower seats, bedpans, toilet safety bars, and a large wheelchair. If you need any of this equipment, call Jan O'Hara at 492-8687.

## LARRY CARRARA CELEBRATION OF LIFE 8/9/1937 - 1/4/2023



The Family of Larry Carrara invite you to join us as we celebrate his life and legend. We hope that you can share some memorable stories of the man who put Shrewsbury on the map with the Moose and Cow love affair.

The event is being catered with the exception of desserts. If you care to bring some goodies, your generosity will be greatly appreciated.

The celebration will be held outdoors if weather permits. Otherwise, we will be inside the Meeting House.

Please bring chairs and beverages of your choice. Water, coffee, and lemonade will be provided.

**JUNE 3, 2023      12:00-4:00pm**  
**SHREWSBURY MEETING HOUSE**  
**88 Lottery Road, Shrewsbury, Vermont**





## Spring Lake Ranch therapeutic community

An important part of any community is celebration, and the Ranch is no different. We celebrate as many holidays as we can—traditional holidays and those we invent ourselves. One of our most beloved invented holidays is our celebration of Spring.

It began as our take on May Day, complete with a dance around the maypole. Because May Day is typically celebrated on May 1, and Vermont weather in early May is dubious we bumped May Day to the end of the month and renamed it Maymorial. Each year, we crown a king and queen with garlands, decorate our old navy truck for them to ride in, and process behind the truck to one of our fields for a May Day dance.

A few years ago, a resident at the Ranch suggested a fun run, and we added another festivity to our springtime celebrations. Ramp It Up! is a 5k/10k run around the Ranch named for the seasonal allium that lines the trails at this time of year. Ramps—a wild onion prized by foodies and foragers alike—have a pungent, garlicky flavor and beautiful, edible leaves that are often tinged with purple or red. They are only around for a few weeks, and their ephemeral nature is part of their allure. As for the mission of the Ranch, taking time to recognize these gifts of the land helps us appreciate and redefine our relationship to food, farming, and the Earth. Ramps are sustainably harvested and turned into a bevy of delectable treats, some of which are shared by Ranchers at dinner after the run.

This year, Ramp It Up! is evolving once again. The event is headed by a current resident, and for the first time ever, we are welcoming the public to join us for the celebration.



### Ramp It Up!

will take place on

**May 18 from 1:30-4:00pm**

**(Rain date: May 25)**

**Members of the public are invited to walk, run, or join as a spectator.**

Ranch-made snacks will be available at water tables along the route. There will also be activities around the property that will give visitors a glimpse of the work our community does and the fun we have together. Whether or not you can make it to the Ranch, you can sponsor our participants by donating at [www.springlakeranch.org/rampitup](http://www.springlakeranch.org/rampitup). Half of all monies raised will go to the Ranch's scholarship program, and the other half will go to a community organization selected by residents.

If you would like to join us for Ramp It Up! this year, keep an eye on the Spring Lake Ranch Facebook page for updates and information. ~Article by Anna Sutton

## Gary Salmon Nominated for Special Recognition

The following was submitted to nominate Gary Salmon for special recognition at the Urban and Community Forestry at their Arbor Day Conference in May.

Gary was a special friend of the Shrewsbury Conservation Commission. He truly was the Shrewsbury Lorax - he spoke for the trees. His service to our natural resources and community will be sorely missed.



He eloquently wrote monthly entries in our local *Shrewsbury Times* on all sorts of interesting topics related to trees, which often included fabulous photos. He initiated projects that grabbed the interest of many in town. He had people out trying to identify the largest tree in

town and our library entrance was filled with photos and measurements of some whoppers! He gathered volunteers to take a survey of all the ash trees in town to plan for the EAB infestation sure to come. He led several SCC Walks and Talks to help residents identify trees and shrubs. Gary worked with all town representatives on so many different projects where the protection of trees was crucial -involving decisions on utility line placement, road and culvert placement, planting native trees to stabilize a road reconstruction project - the list goes on. We all will miss Gary's enthusiasm and love of both people and trees!

~Submitted by Louise Duda,

Shrewsbury Conservation Commission

## Concert to Honor Gary Salmon

**May 21, 2023 at 4pm**

The Rutland Area Chorus and Festival String Orchestra (*which includes several Shrewsberries*) will perform the Five Mystical Songs by Ralph Vaughan Williams on May 21 at 4pm at Grace Congregational Church in Rutland.

The Turtle Dove - a Lament for Oboe and Strings, by New England composer, Gwyneth Walker, was commissioned by Grace Church in memory of Gary Salmon with funds given in memory of Gary by his friends and family. Following the world premiere, the RAC will perform the folk song, The Turtle Dove, arranged by Vaughan Williams in honor of Gary and his wonderful contribution to the choral music scene in Vermont (Gary was a long time member of the Grace Church Sanctuary Choir and the Vermont Symphony Orchestra Chorus).

The second world premier is a new arrangement of Alastair Stout's song cycle, Sing a Song of Seasons, performed by Amy, and Dan Frostman, and the Grace Festival String Orchestra. The concert will also include the Capriol Suite, a wonderful collection of baroque-style dances for string orchestra, by the English composer, Peter Warlock.

# SHREWSBURY LIBRARY

Library News Submitted by Joan Aleshire

## LIBRARY & FOOD SHELF HOURS

Monday 10 a.m. to 12 p.m.

Tuesday 7 p.m. to 9 p.m.

Wednesday 10 a.m. to 5 p.m. & 7 p.m. to 9 p.m.

Thursday 7 p.m. to 9 p.m.

Friday 10 a.m. to 12 p.m.

Saturday 10 a.m. to 12 p.m.

Please don't visit us if you're not feeling well, and wear a mask if you want.

To search the Library Catalog, put a Hold on a book or video in our collection, or get the latest Library news, please go to our web site: [www.shrewsburylibrary.org](http://www.shrewsburylibrary.org).

- \* MANY THANKS to ROBERTA HEMMER for a wonderful presentation on Yellowstone last month! A good crowd braved the slushy, icy weather to welcome Roberta, DVM, back to Shrewsbury.
- \* The Library's ANNUAL MEETING for the election of officers and trustees for open positions will take place on May 9 at 7 p.m.
- \* We'll announce the results of the STREAMING SURVEYS next month. Thanks to everyone who responded, and to CABOT SPATZ and ED SAWYER for their work on this.
- \* If you haven't seen the "TREES QUILT" that Trish Norton created in memory of our friend GARY SALMON, you still have plenty of time to stop in, admire, and buy raffle tickets to support the purchase of forestry books for all ages. The drawing will be at the Street Dance on Saturday, August 5.

## Coming Events:

Friday, May 19 @ 7pm Vermont Poet SARAH AUDSLEY will read from her first book, *Landlock X*, in a program co-sponsored by SAGE. Sarah grew up in Woodstock as a Korean adoptee. She is a recent graduate of the Warren Wilson College MFA Program, and received a grant from the Vermont Council on the Arts.

Friday, May 26 @ 7pm: CABOT SPATZ will talk about his work as a Page at the Vermont State House.

## SAVE THE DATE:

Saturday, July 1 @ 3pm SANDGLASS THEATER presents "Oma," a puppet show for all ages at the Russellville Schoolhouse, co-sponsored by SAGE.

## Continuing Programs:

Sunday, May 7 @ 3:30pm WRITERS' GROUP: Poets and writers of short fiction, please join us to share your work. Please contact Penelope Weiss: [pw9@earthlink.net](mailto:pw9@earthlink.net) or Joan Aleshire: [joanaleshire@vermontel.net](mailto:joanaleshire@vermontel.net).

Sunday, May 21 @ 4pm: FAMOUS BOOKS BOOK CLUB: *GOETHE'S Faust, Parts 1 & 2*: 2nd Discussion. If you need a book, please contact Joan.

Sunday, May 28 @ 7pm: SCIENCE BOOK CLUB: Next book: *Code Breaker: Jennifer Doudna* by Walter Isaacson. Note Summer Time! Print and e-books will be available. Please contact Margery Salmon to order a copy: [salmonm@vermontel.net](mailto:salmonm@vermontel.net).

## New Books include:

- \* *Hello Beautiful* by Ann Napolitano: A large-hearted family novel, based on *Little Women*.
- \* *The Other Family Doctor: A Veterinarian Explores What Animals Can Teach Us About Love, Life, and Mortality* by Karen Fine, DVM.
- \* *Every Man a King: A King Oliver Novel* by Walter Mosley, master of Los Angeles noir.
- \* *Birnam Wood* by Eleanor Catton: A novel by the author of *The Luminaries*, about eco-activists encountering a tech entrepreneur.
- \* *Rough Sleepers: Dr. Jim O'Connell's Urgent Mission to Bring Healing to Homeless People* by Tracy Kidder, author of *Mountains Beyond Mountains*.
- \* *Pineapple Street* by Jenny Jackson: a witty novel about the super-rich in Brooklyn, NY.
- \* *Poverty, by America* by Matthew Desmond, author of *Evicted*: A searching, provocative study of the way systems disadvantage the poorest among us.
- \* *Life on Delay: Making Peace with a Stutter* by John Hendrickson: A clear-eyed, moving memoir by a staff writer for *The Atlantic*.

## New DVDs:

- *Emily*: An evocative feature about Emily Bronte, author of *Wuthering Heights*.
- *The Whale*, starring Brendan Fraser in an Oscar-winning performance.



**Chiropractic Care • Therapeutic Massage**

**Holistic Health Education**

**Stress Reduction Products**

**Nutritional Supplements • Coaching**

**802-446-2499**

**68 South Main Street • Wallingford**

**[uthrive@vermontel.net](mailto:uthrive@vermontel.net) • [thriveinvermont.com](http://thriveinvermont.com)**





#### BOOK REVIEWS

\*\*\*\*\*Fantastic  
\*\*\*\* Compelling page turner  
\*\*\* Enjoyable  
\*\* Just O.K.  
\* Not recommended

**Your Inner Fish:  
A Journey into the 3.5 Billion-Year History  
of the Human Body**  
by Neil Shubin  
\*\*\*\*\*

Science convinces author Neil Shubin, and, eventually we incredulous readers that the fundamental model and structure of DNA is so perfect in its genius that it is *the* ultimate blueprint linked across many (most?) species! The excitement of this discovery drives scientists like Shubin and his colleagues to devote their lives seeking answers. He writes (page 3):

*Typical summers of my adult life are spent in snow and sleet, cracking rocks on cliffs well north of the Arctic Circle. Most of the time I freeze, get blisters, and find absolutely nothing. But if I have any luck, I find ancient fish bones. That may not sound like buried treasure to most people, but to me, it is more valuable than gold.*

Neil Shubin is a paleontologist and professor of anatomy who co-discovered Tikaalik, the "fish with hands." This account of the ultimate puzzle is written in readable, likeable prose. The author is so joyful in his delivery that it made me feel like he was the proverbial kid in the candy shop.

~Reviewed by Marilyn Dalick (Science Book Group)

## NATURE'S TURN, LLC

**Gerry Martin**

**Artistic & Functional Wooden Bowls**



**Vermont Crafts Council  
Open Studio Weekend**

**Saturday & Sunday**

**MAY 27 & 28, 2023**

**10am – 5pm**

998 Lincoln Hill Road,  
Shrewsbury, VT 05738  
(802) 492-2244

**Join the  
Shrewsbury Conservation Commission  
on a**

## Bird and Nature Walk!

**Saturday, May 13  
9:00am at Jockey Hill Farm**



Connie Youngstrom and Linda Shelvey, long time birders, will lead a walk to listen to and observe birds at the height of breeding season. They will talk about birding apps for your phone, guidebooks, local hotspots and how to use Ebird. Enjoy springtime in the woods with these two birders and enhance your bird identification skills!

**Due to the popularity of this event registration is required. Contact Weezie at [shrewsburyvtconservation@gmail.com](mailto:shrewsburyvtconservation@gmail.com) If more than 15 participants sign up, a wait list will be started.**

Jockey Hill Farm is located on Coldham Rd. From Northam, take the Upper Cold River Rd. and a mile north take a right. Park at the end of Coldham Rd.

**9:00am Rain or shine!**

**Bring along binoculars, bug spray, and rain gear!**

# Shrewsbury Historical Society

www.shrewsburyhistoricalsociety.com

## Thank You

The Historical Society thanks the 204 voters of our town who said "yes" to Article 12 request for \$2500 to help keep up the maintenance of this historical church building that is home to the history of our town.

## Fifty Years Ago

In May of 1973, the *Times of Shrewsbury* appeared for the first time. On its cover it stated that "this first copy launches a real adventure in community partnership". Our town has been enriched with each and every issue. Kudos to the Times' editors and staff.

## Memorial Day

Originally called "Decoration Day", it signified the day to decorate the grave-sites of men and women who gave their lives to protect our country during wars. On page 220 of the history book which is titled "Shrewsbury Vermont - Our Town As It Was" by Dawn D. Hance, there is a wonderful photo of a small parade on School Street (now Town Hill Road), showing a veteran, dignitaries and school children. On the same page it reads "Much research has been done to locate the service records of these people so that the flag of the United States can fly proudly over their graves." To this day, Memorial Day, Shrewsbury grave-sites are decorated with fresh American flags, supported by American Legion and Veterans of Foreign war, and school children.

## The Poppy Lady

It all started with a poem written by Lt. Col. John McCrae of Canada in 1915, entitled "In Flanders Fields."

An American woman, Moina Michael, so moved by the poem made a pledge to wear a red poppy made of paper, and sold with proceeds to assist in helping disabled veterans and families. Michael is commemorated by a U.S. 3 cent stamp for her efforts as the "Poppy Lady" in 1948.

As a little girl I remember seeing men and women selling the paper poppies before Decoration Day on the busy streets of Hempstead, L.I. My Dad always bought one and kept it in his car.

## CCC Camp in Shrewsbury

In 1933, President Franklin D. Roosevelt signed the legislation for the formation of the Civilian Conservation Corps. to help recovery of the depression in the 1930s. Over a million men, ages 18 to 25, (with 4000 sent to Vermont's 20 camps alone) entered the enlistment of six months and were sent to prepare camps which they would build, and from there they would build forest roads and trails, construct campgrounds and state parks, stock streams with fish, improve wildlife habitats and use other forestry practices.

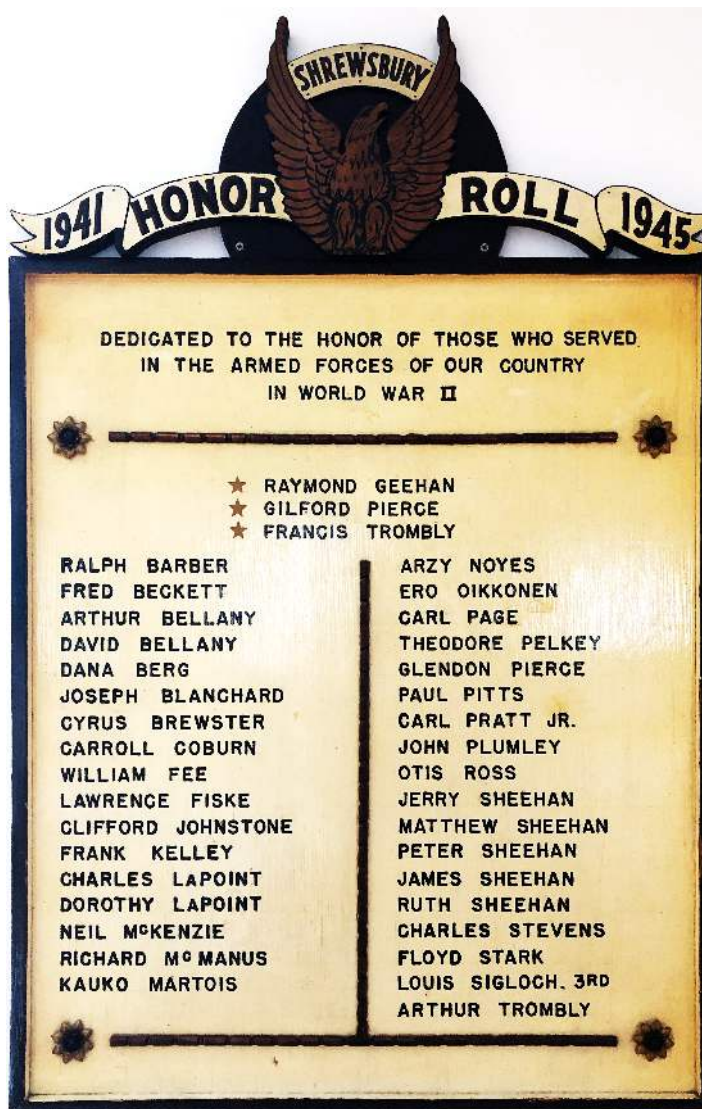
On a mountainside in North Shrewsbury parts of an installed ski tow rope machine were found and was featured in a recent issue of the Times.

Did you know that the enrollees were required to send home \$25 of the \$30 monthly allotment which they would receive?

The camp hours were from 6am to 10pm. Educational programs were offered to the men during their leisure hours. The camp closed on May 27, 1937.

Marjorie Pierce listed the names of Shrewsbury CCC members and the camps they worked in, as follows: Raymond Barber, Northam; Richard Buckey, Northam; Bennie A. Carrara, Northam; Bennie D. Carrara, Peru; Charles Graham, Northam. Howard Lavalley, Northam; Gilford Pierce, Northam, Peru and E. Burke; Ralph Plumley, Northam and Clyde Ross, Northam. Plans are underway to present a special program given by Marty Podskoch, author of books related to this special time in America. When Mr. Podskoch visited the museum last year he was impressed with the museum/s panels exhibiting the Northam camp. Stay tuned, details will be in future issue.

~Submitted by Ruth Winkler



## Memorial Day ~ May 29, 2023

Memorial Day honors those who lost their lives while defending their country whereas Veterans Day honors everyone who has served in the military.

The plaque in the Shrewsbury Meeting House (photo above) recognizes those from Shrewsbury who served in the armed forces during World War II and honors the three who died: Raymond Geehan, Gilford Pierce, Francis Trombly. ~C.Martin





## SNO-BIRD NEWS

The 2022-2023 season is over as of April 16. For us the season did end up having some very nice riding in March and the first part of April. We were the only club in Rutland County grooming in late March and the last night I was out was April 2. The last two weeks we groomed some of the Mount Holly club's trails also as their Tucker was broken.

Our week average out of the 16-week season is 11.8; this year we did 10 weeks. We were down 25% of the total mileage that we could have groomed. That was a lot better than it was going to be starting into March.

Scott Ryan and Dave Fucci have been out taking down our signs so they do not get destroyed. I have been out locking the gates along with Scott and Dad locked the ones around their place. Three more signs need to come down and the Tucker tracks need to get covered for the summer to protect them from the sun and some other odds and ends and then we will be ready to start thinking of trail work when things dry up.

Thanks to everyone who helped in any way this grooming season as our trails would not have been as nice as they were once we got snow to work with. Early in the season the trails were not as good as we like but with lack of snow and not smooth ground to start with, we can only do so much. We have to try and get snow pulled in from the sides to try and smooth them up and then we need consistent low temps with no rain which did not happen for most of the season.

The club has one more meeting this season which is election of officers. If anyone is interested in getting involved in any way come to our May meeting on May 9 at the Southside Steakhouse in Rutland. It starts at 7pm, we always like to see new faces and ideas.

I closed the Governor Clement Shelter on April 15th. Everything was pretty bare!

I hope some of you got out to enjoy our trails this winter, and I hope that you had a nice time that is what we work for! Hope to see you on the trails next winter season!

~Article by Roy Arthur



Treasure in the woods  
Underfoot and up above  
Time to shed and grow

Haiku & Photo by Galen Miller



Reinbow Riding Center Volunteer Jerry Parker from Shrewsbury leads a walk in the woods.

## REINBOW RIDING CENTER NEWS

On Saturday, May 6, 10-12 noon at Reinbow Riding Center in Belmont we will be holding our annual spring Volunteer Orientation and Clinic. This is a chance for everyone to get up close and personal with a few of our extraordinary horses and experience the comradeship of our Volunteer staff and team. It's also a chance for anyone that is curious about what we do at Reinbow Riding Center to visit and see if you would like to join our team.

No horse experience is necessary as there are many other ways to give us a hand, but if you have always wanted to experience horses this is a great way to get started. It's also a great way to give back to your communities and join us in giving children an experience they will never forget. We provide services for individuals from age three and up and volunteers are usually age 14 and up. You can also meet community service commitments volunteering with us.

When it's time to divide those day lilies, please think of us and drop them off on the side hill below the ring at Stone Wall Farm/Reinbow Riding Center. Thank you.

For more information, please visit our new website: [reinbowridingcenter.org](http://reinbowridingcenter.org) and follow us on Facebook or Instagram @reinbow\_riding\_center. Contact us at [programs@reinbowridingcenter.org](mailto:programs@reinbowridingcenter.org) or 802-236-2483 to inquire about our programs and lessons. For information about opportunities to volunteer with us contact [janetupton@reinbowridingcenter.org](mailto:janetupton@reinbowridingcenter.org). ~Janet Upton



## The Shrewsbury Community Church



*Compiled by Sue Ransom-Kelley*

### Shrewsbury Community Church Calendar

Tuesday, April 25 @ 12:00pm Prayer Shawl Group at the Meeting House.

Sunday, April 30 @ 10:30am Fun Day Program for kids. Worship Service led by Wendy Savery.

Sunday, May 7 @ 10:30am Fun Day Program for kids. Worship Service with Holy Communion led by Wendy Savery.

Sunday, May 14 @ 10:30am Fun Day Program for kids. Worship Service led by Reverend Holly Ross.

Sunday, May 21 @ 10:30am Fun Day Program for kids. Worship Service led by Wendy Savery.

Tuesday, May 23 @ 12:00pm Prayer Shawl Group at the Meeting House.

Sunday, May 28 @ 10:30am Fun Day Program for kids. Worship Service led by Wendy Savery

All are welcome to join us any Sunday at 10:30am at the Center Church on the second floor of the Shrewsbury Meeting House. Come enjoy the beautiful music, hear an uplifting message from our Pastor, and visit with your neighbors. Refreshments served after the service. There is also a Fun Day Program for kids!

## Community Food Shelf

Free Community Food Shelf at the Library in the front entry way. Those in need are welcome to help themselves any time the Library entryway is open. Limited hours are: Mon 10am-12noon; Tues 7-9pm; Wed 10am-5pm and 7-9pm; Thurs 7-9pm; Fri 10am-12noon; and, Sat 10am-12noon.

We have our additional Summer Food Shelf on the side porch at Pierces Store in North Shrewsbury. Those in need are welcome to help themselves.

**Food Delivery and Assistance** If you are unable to get to the Food Shelf at the library in Shrewsbury, we will deliver groceries to you. If you need items which are not available on the shelf, we can provide grocery gift cards. Call Karen at 802-558-5991 or Sue at 802-779-4825 or 802-492-3738.

### Community Needs

- Wedding, Funeral or Memorial Service Requests: Contact Donna Smith 802-492-3367; or Sue Kelley 802-492-3738, 802-779-4825
- Community Helping Hand Requests: Contact Donna Smith 802-492-3367; Sue Kelley 802-779-4825, 802-492-3738; or Karen Lorentz 802-558-5991. Shrewsbury residents experiencing financial hardship. Assistance can be given for basic needs (food, heating, gasoline, etc). If you or a neighbor are in need, please let us know!
- Pastoral Care, Home, Hospital Visitation, Outreach Requests: Contact Roxanne Ramah 802-492-3675 or Ruth Kinne 802- 775-5318.

~~~~~

The Shrewsbury Prayer Shawl Group will meet on Tuesday, April 25, at noon. We will meet again on Tuesday, May 23, at noon upstairs @ the Shrewsbury Meeting House. All are welcome to attend! Dessert, coffee, and tea will be served. Bring a bag lunch if you would like to. If you don't know how to knit or crochet, we will teach you! Questions call Roxanne 802-492-3675 or Sue 802-779-4825.

Another Successful Pancake Breakfast!

Thanks to our awesome crew! Abby, Tiffany, Roxanne, Cortney, Pastor Wendy, Jan, Julianne, Linda, and Sue



We had a wonderful Pancake Breakfast on March 25! Thanks to all who came out to eat and support our Community Sharing Project! Special Thanks to Mary and Jeff from Maple Crest Farm for donating the delicious syrup and pancake mix! Thank you to Price Chopper for supplying napkins and cups! We couldn't do it without you all! Our proceeds will provide gift and grocery cards to families in Shrewsbury during the holiday season.



GREEN UP DAY 2023 SATURDAY MAY 6

8am - 10am

Meeting House Breakfast

Choose your Road, Take Bags,
Get your Raffle Ticket!

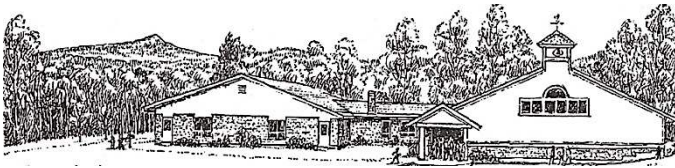
Head out to Green Up!

Please wear gloves! Separate recyclables if you can!

10am - 12noon

Bring Collections to Transfer Station

Celebrate your good deed
and collect prizes if you're a winner!



SHREWSBURY MOUNTAIN SCHOOL

Important Dates:

- 4/28: Swing into Spring Dance for SMS Families
- 5/8-5/12: Teacher Appreciation Week!
- 5/22: PreK and Kindergarten Registration
- 5/24: 6th Grade Step Up Family Night at MRU
- 5/26: 6th grade Step Up Field Trip to MRU
- 6/9: Field Day (Rain Date: 6/13)
- 6/12: Move Up/Graduation and Music Concert at 6:30pm

SMS has a beautiful partnership with the SAGE organization. Each classroom is planning a themed garden raised bed with the support of Scott Courcelle and Stephen Abatiell. We are so excited to continue to learn new skills in gardening and sustainability! We are hoping to bring back our special event "The Harvest Festival" this fall.

Ms. Kim hosted a SUPER FUN spring egg hunt for our students!

We are very excited about more opportunities to learn in our outdoor classrooms, observe the growth of our orchard trees, and enjoy watching everything bloom and grow this Spring!

Kristin Cimonetti, Principal
802-786-3995 kcimonetti@millriverschools.org

Update on Senior Support Group, now "GREEN MOUNTAIN NEIGHBORS"!

We now have a name for our all-volunteer, non-profit, organization: Green Mountain Neighbors.

Our mission is to help seniors successfully live-in-place in Mount Holly, Shrewsbury and Wallingford.

During the past month or so we distributed, and have now compiled, a Needs Assessment Survey to residents over 60 years of age. The results of over 100 returned surveys (from the three towns) showed highest needs in the areas of Social Activities, Transportation, and Help with Household Tasks.

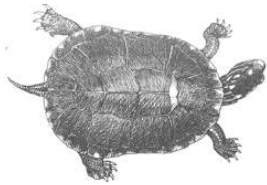
The Steering Committee is currently working on:

- Volunteer Survey to help us match volunteers with specific jobs
- Application for 501c3 non-profit status
- Logo and marketing plan
- Fundraising for startup/"seed" money (for printing materials, filing fees, etc.)
- Planning for Community Meetings in late spring to provide a full overview for residents

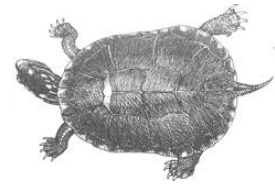
Green Mountain Neighbors will be an all-volunteer, neighbor-helping-neighbor program.

As we grow in volunteer support, we hope to be able to address other areas of needs. If you are interested in being a volunteer, or just want to understand more about what we're doing, please email: Mount Holly: to Kathy Leber kleber@vermontel.net Shrewsbury: to Linda Fontana lafaha_2000@yahoo.com Wallingford: to Sandy Eddy seddy@vermontel.net

~ Submitted by Sally Deinzer



Shrewsbury Outing Club's 68th year!



The Shrewsbury Outing Club (SOC) is a volunteer nonprofit organization open to residents and landowners of Shrewsbury who choose to become members. We lease a small piece of Spring Lake waterfront for members' use. We also have occasional outings, have historically provided swimming lessons, work with lake shore owners on monitoring loons and water quality, and help maintain trails in the wilds of Northam.

An SOC Family Membership is available to any Shrewsbury resident, or landowner, who has submitted the 2023 membership form, waiver, paid the annual fee and has been added to the membership list. A Shrewsbury family is defined as a family or individual residing, or owning property, at one address in Shrewsbury. Family members living at another address are considered guests and must be accompanied by an SOC member to use the SOC waterfront area.

If you wish to join for the upcoming season, please contact us via email at: ShrewsburyOutingClub@gmail.com for the forms. Last years' members will be emailed forms about April 30. Be sure to add the SOC email address to your address book so that it will not go to spam.

The completed 2023 Membership form, waiver and membership dues of \$45 payable to the Shrewsbury Outing Club should be mailed to:

Shrewsbury Outing Club
c/o Chris Clarke, Treasurer
4431 VT Route 103
Shrewsbury, VT 05738.

2023 Membership Form and Waiver will also be available at the Shrewsbury Town Office. A membership lasts from June 1 to May 31 of the following year. Your name will be added to the membership list posted at the lake and given to the security guard. After June 1, membership lists will be updated at the end of each week. You may be asked to leave if your name is not on the list.

Our heartfelt gratitude goes out to Marcos Levy who taught swimming and water safety to Shrewsbury children for over two decades!! His kindness, encouragement and expertise will be missed. The SOC is researching options but at this point has nothing in place. Stay tuned. Recommendations are welcome.

~Grace Brigham, Shrewsbury Outing Club



If you missed it the first time around....don't miss it the next time it comes around!! A full house of over 100 Shrewsberries came to hear the toe-tapping tunes and talent of Spintuition on April 1 at the Meeting House. Following their concert there was contra dancing led by Licia Gambino. Spintuition features Silas Hamilton of Shrewsbury, Willy Clemetson from Belfast, ME., and Samuel Foucher from Guilford, VT. They are scheduled to play in the Shrewsbury Meeting House Concert Series on September 1, 2023. For a complete list of their future events visit <https://spintuitionband.com>. ~Chryl Martin

NEWS FROM MONTPELIER

Hello from Montpelier. We just passed S.5, "The Affordable Heat Act", the House is proposing some amendments from the version the Senate passed, so now the bodies need to negotiate the difference between those two versions. But I have little doubt the bill will pass this session in some form. I want to talk about that bill and about the budget, because as I often say in these articles, the budget continues to be the most substantive thing we will do up here and is the most overlooked or otherwise subject to a lot of misinformation.

First on S.5. This bill has changed A LOT in its path through the state house. Some of the coverage and talking points have been misleading, focus on pieces that were removed at earlier stages in the legislative process or focus on things that were proposed but never added at different stages. This bill is complicated, but the impetus for it is simple. Most of us, including my household, rely on propane, heating oil, kerosene or other heating fuel that is subject to price swings beyond our control. My household uses ~100 gallons of propane per month in the winter, we use it primarily for hot water, but also supplemental/backup heat on the below-zero days. In April 2021, I paid \$2.49/gallon for propane, in April 2022, \$3.52/gallon and in April 2023, \$2.69/gallon. That \$100 may not sound like much to some, but it's hard for us. The purpose of this bill is to create a plan to help Vermonters use less of these fuels, mostly through weatherization or installing new heating technologies, things that are financially out of reach for many Vermonters. But this bill does not implement any tax or fee. At different times, opponents have suggested this bill includes a 70-cent tax on heating fuels, but that is misleading. The purpose of the bill again is to design a plan and study what fee would be necessary for that plan. But the bill is designed for the legislature to have to weigh in again before any such tax/fee could go into effect. The fact is that these heating fuels are finite resources, we will run out of them, and their prices will continue to fluctuate wildly. Vermonters will be better served if they do not have to rely on them and can transition to more stable fuels for heat. This bill is a first step in that direction.

Quickly on the budget. I've just seen a lot in the press about the Governor chiding the legislature on the budget and I want to add some context and quick thoughts. I think it's important and lost in the back and forth that everyone agrees on about 98% of the spending. The major differences come in right now because the Governor would like us to set aside a certain amount of money that we don't need until next year or the year after to secure matching federal funds. Instead of doing that, the legislature is proposing to invest more in childcare and standing up our proposed paid leave program. He doesn't support those investments and would like us to save that money instead. We have full faith that we will be able to find the monies to secure those matching funds next session, even making these investments now. That is the major difference between us at the moment.

As always please reach out about this or anything else anytime, I do ask that you call/text my phone or reach out to my new email address as opposed to any other, I just get too much spam on all others.

*Logan Nicoll, State Representative
Ludlow, Mount Holly, Shrewsbury
RepLoganNicoll@gmail.com 802-345-8430*



This past month we met with the staff at Shrewsbury Mountain School to plan out the educational school garden. Each teacher is bringing a creative approach to weaving the garden program into their school curriculum and we're all excited to start getting our hands dirty this spring!

SAGE, Shrewsbury Agricultural Education & Arts Foundation, began in 2012 as a non-profit organization to promote traditional and innovative agriculture. We added support for the arts to our mission in 2020. We sponsor workshops, concerts, spoken word readings, and more in the Russellville Schoolhouse. For more information about SAGE: contact Stephen Abatiell at educate.sage@gmail.com, Joan Aleshire at 492-3550 or visit www.sagevt.wordpress.com. Follow us on Facebook for up-to-date event details at Shrewsbury SAGE and find our sustainability and arts videos on YouTube.

Submitted by Stephen Abatiell

We're having a baby! Wally's Corner will be closed May 6 until June 30. During this time, please feel free to contact us for private shopping appointments, shop our Etsy store (details can be found on our Facebook, Instagram, or Tik Tok pages) or join us for a Monthly Craft Night! The information for the craft nights is below.

~Hallie Knudsen



MONTHLY CRAFT NIGHT AT WALLY'S CORNER



UPCOMING EVENTS

| | |
|-------------------|--|
| May 27, 2023 | Monthly Craft Night: Build a Self Sustaining Terrarium |
| June 24, 2023 | Monthly Craft Night: Lilac Honey Infusion |
| July 22, 2023 | Monthly Craft Night: Succulent Pots |
| August 12, 2023 | Monthly Craft Night: Drying Flowers Using Silica Gel |
| September 9, 2023 | Monthly Craft Night: Spa in the Garden |

**Details can be found on Facebook
under "Wally's Corner Events".
Generally each event is 4pm-
5:30pm @ Wally's Corner Store**



All events have Prizes, Giveaways, and Discounts Store Wide
with Private Shopping!

Wally's Corner 5304 VT Route 103 Cuttingsville, VT 05738

Small Farm Flavor & Quality



VT MAPLE SYRUP & GRASSFED BEEF

Come and try our pure Vermont maple syrup and see the small farm difference. Bring a cooler and stock up on our Vermont Beef and Pork.

GIFT CERTIFICATES AVAILABLE

Farm Store Hours:

Wednesday - Monday - 10 am - 5 pm

CLOSED Tuesday - Call for appointments

Directions From:



Rutland: Left off VT RT 103 just 2.5 miles - on the right
Cuttingsville: Just 2.1 miles up Town Hill Rd, right on Lincoln Hill

2450 Lincoln Hill Road, Shrewsbury VT. 05738

SmithMapleCrestFarm.com

802-492-2151

maplecrest.info@gmail.com

We Ship Syrup All Over The USA



RAINBOW RIDING CENTER VOLUNTEER ORIENTATION & CLINIC

**SATURDAY, MAY 6th
10-12:00**

COME TO OUR CLINIC AND LEARN
ABOUT VOLUNTEERING AT RAINBOW

We are located in Belmont at 892 Tarbellville Rd.

For more information visit our website: rainbowridingcenter.org

Text or call Janet at 802-770-2958



THE NEW LEARNING PROJECT CHOOSING TO EXPERIENCE OUR POTENTIAL

MUSIC LESSONS -- Guitar, Piano, and more
RED CROSS COURSES -- First Aid, CPR, Lifeguarding
SWIMMING INSTRUCTION
(More services at website)

STUDIO IN CUTTINGSVILLE VT

www.TheNewLearningProject.com

TheNewLearningProject@gmail.com

802.492.3208

Marcos Levy

Instructor with over 30 years
of Experience

Stewart Maple Marketplace

Shop to support your local business community
Maple Products - Specialty Foods - Artisan Gifts
made by Vermonters.

Open Hours : Thursday-Saturday 11am-5pm
Sunday 11am-4pm

5444 VT ROUTE 103 SHREWSBURY VT 05738

www.stewartmaple.com

Shop online and have it shipped or pick-up curbside

Bad news...

we will be CLOSED May 11-14
(Mother's Day weekend)
Be sure to stop by for your Mother's
Day gifts by May 7!

We are a powerful part of our ecosystems

Wood frogs and chickadees, flickers and daffodils, neighbors and squirrels--All in this Together, we celebrate the sun, warmth, Life. All that have slumbered, awake to get busy or put forth cautious shoots and buds. Even the humblest weed appears perfect in its first form. In the trees, a sprinkling of flowers and fluffy catkins becomes an outpouring of green intention.



Celebrate our trees! Arbor Day April 28, Earth Day April 22, remember our Lorax who spoke for them.

A recent study from the National Park Service focuses on forest regeneration, "the ability of each forest to sustain itself through the growth and survival of seedlings and saplings that replace large trees as they die." They found that most eastern National Park forests are greatly at risk from deer browse and Invasive Plants. Well, these park forests are not islands! What about the rest of our forests? They are facing the same threats, to varying degrees.

Deer live in our forests, lovely creatures. We love to see them, and many enjoy the meat they provide the successful hunter. They were here in their numbers long before European settlement, hunted by native peoples and large predators. There were seedlings and saplings enough to sustain them in their forest home. Large scale clearing of forests for agriculture and home building plus the extirpation of most large predators has upset any balance. So, let's not blame the deer.

Humans have created the conditions wherein the deer inhabit smaller forest areas - many trying to regenerate from timber harvest. Humans have made inroad after inroad into our forests, fragmenting habitat for creatures other than ourselves and opening avenues for non-native plants to spread. The deer prefer the native plants and spare the invasives, which then take over, impoverishing the ecosystem. The deer then browse ever smaller areas of regeneration, preventing the formation of understory and 2nd tier canopy, essential for healthy diverse forests.

Remember that our butterflies come from caterpillars that need certain plants, trees, shrubs to feed on. Our birds rely on these caterpillars and other native insects to feed their young. We need native plants to thrive so that the rest of the ecosystem can thrive. That includes us! We are a powerful part of our ecosystems. Humans must work to restore balance here. It is our collective and individual Human responsibility to act on behalf of the Life that sustains us. Success to the Hunter, of deer or invasive plants! Success to the Planter of trees and native shrubs! Success to the Seeker of knowledge and ways to restore balance, create more understanding of how to work With the Earth.

*Submitted by Pamela Darrow,
Shrewsbury Conservation Commission*

P.S. your Conservation Commission each year removes invasive plants in town and encourages you to do your part. Educate yourself about the particular plants that bedevil us here in Shrewsbury, and try your hand at removing them. We are always willing to help and give advice !

Shrewsbury Singers

The Shrewsbury Singers are starting up again! For the months of May, June & July, we will gather on Sunday mornings, from 9:00am–10:30am at the Russellville Schoolhouse, 18 Crown Point Road in Shrewsbury.

We'll be singing songs in harmony from across the globe and spanning centuries. All levels of singing experience are welcome to join, all that is needed is a love of singing!

For more information, please contact Licia Gambino – (802) 492-3792 or hamgam@vermontel.net

GARDENER NEEDED

WEEDING FLOWER GARDENS

Upper Cold River Rd.

Please call Vaughan and Eleanor

802-773-7513

RIVERWOOD LAWN CARE, LLC

Fully Insured

Patrick Angstadt
802.770.0433

riverwoodlawncare@gmail.com

Mowing, Trimming
Spring and Fall Cleanups

FREE ESTIMATES

Preservation Trust of Vermont "Village Meet-Up"

Tuesday, June 6, 2023

What if it really does take a village? Vermont's rural villages have served as a model for sustainable living and community connections for generations. They define a sense of place and while they have experienced changes, Vermont's small towns and villages are poised to welcome a new and exciting future. The day-long meet-up will focus on village revitalization, celebrating success, identifying challenges, and exploring solutions.

Join the Preservation Trust of Vermont and the Department of Housing and Community Development on Tuesday, June 6, 2023, for the first-ever "Village Meet-Up," hosted by the Town of Strafford.

Morning Sessions

The Future is Rural

The most exciting models for community and economic development in Vermont are being developed and piloted in villages. A panel of rural community champions will discuss the innovative strategies they are employing to meet challenges and leverage assets. Specific strategies will include outdoor recreation, community supported enterprises, and repurposed community centers.

Tools for Village Revitalization

Want to revitalize your village but are unsure where to begin? A panel of community leaders and funders will share examples of inventive programs that are reshaping the way we think about place and investment in Vermont's villages.

Afternoon Sessions

The Strafford Story

The Justin Smith Morrill Homestead and the picturesque town green crowned by the Town House draw visitors to Strafford, but many other buildings tell the story of those who built and sustain the community. A local panel will share the work of residents, local government, and civic groups to create a vibrant town through citizen engagement with history, the arts, and community development.

New Systems for a New Future

The world has changed and so have the ways in which rural leaders are thinking about systems. A panel will focus on common issues for any community (housing, land ownership, placemaking) and the creative approaches leaders are taking to rethink the future of rural.

Sign up for local walking tours during check-in and attend a festive ice cream social with music on the Strafford Town Green to end the day!

The event will be held at the Strafford Town House. Sessions will run from 9:00 am to 3:30 pm with the ice cream social to follow. The cost including lunch is \$25. Space is limited to 100 participants. Registration closes at 5pm on Monday, May 22. Register soon! For additional info, visit www.ptvermont.org

Note: This looks like a session that *someone* from Shrewsbury should attend. Although I will not be able to attend this event, I have attended various Preservation Trust of Vermont gatherings in the past, and they are excellent! I got many ideas for the store and much support from them. ~Sally Deinzer

Community Social" Event

Join the Council on Rural Development (VCRD) for their inaugural "Community Social" on the shores of Lake Bomoseen on June 13, 2023.

The event is for community members, volunteers, leaders, and partners committed to Vermont. The short program will feature speakers from across the state as well as updates and ways to engage on VCRD initiatives and programs that connect with rural communities around Vermont. There will also be time for networking and connecting with friends old and new.

This is a critical time to be focused on our small cities and towns, and VCRD is a dynamic partnership of national, state, local, non-profit, and private leaders who listen to the opportunities and challenges in Vermont's communities and support those who dedicate themselves to the progress of their communities and Vermont.

We'll be sharing more details and how to register soon - and spaces are limited. Visit our website to learn more:

<https://www.vtrural.org> | info@vtrural.org

*Brian Lowe, Executive Director
Vermont Council on Rural Development*



88 Lottery Rd Shrewsbury, VT

SHREWSBURY MEETING HOUSE CONCERT SERIES 2023

CONCERTS IN THE BEAUTIFUL OUTDOORS

Please bring a CASH contribution and your own seat. Food vendors on site TBA.
Your contributions benefit the musicians and the historic Shrewsbury Meetinghouse.

For more info, please call Vicky or Paul at 802 492-3649

Concerts on FRIDAYS 5-7pm
(Rain dates are on Sundays)

| DATE | | Rain Date |
|--------|----------------|---|
| JUN 16 | FAUX PAWS | RAIN OR SHINE Concert will be Inside if raining |
| JUN 30 | SATYRDAGG | JUL 2 |
| JUL 14 | LUMINOUS CRUSH | JUL 16 |
| JUL 28 | MOOSE CROSSING | JUL 30 |
| AUG 18 | PANHANDLERS | AUG 20 |
| SEP 1 | SPINTUITION | RAIN OR SHINE Concert will be Inside if raining |

Find us on Facebook for more info



Shrewsbury Conservation Commission Trail Camera Picture of the month



This month we have a capture of a fisher from Diane Jakobsen. The **fisher** stops by this area regularly to leave scent.



Michelle Green, Taylor and Todd Frederick captured a **mink carrying a crayfish**. It's possible there may be young nearby!



Finally, Linda Shelvey was lucky to have a **red and a gray fox** pose in the daylight for a picture. A nice comparison of the different markings between the two foxes.



Michelle Suker photographed a **barred owl** hunting from the top of the Fretz's mailbox.

If you have a picture or track to share email Linda Shelvey Lpurdyshel@gmail.com

Wallingford Rotary Upcoming Events



Wallingford Rotary Club is an organization which serves not just that town but surrounding communities as well, including Shrewsbury. We hope that one or more of these upcoming events will be of interest to your families and neighbors.

Annual Bicycle Safety Day

Saturday, May 13 from 9:30am-12:30pm at the Rotary Building, 96 North Main Street in Wallingford: Shrewsbury students and their families are welcome to come and participate. Free helmets with personalized fittings for all students, plus free bike inspections and a safety course. Raffle prizes! Free hot dogs and ice cream for all attendees.

Youth Exchange Student Presentation

Saturday, May 20 @ 7pm at the Rotary Building, Wallingford: Vaidehi Sangrod, our Rotary Youth Exchange Student from Gujarat, India has spent this school year living in Shrewsbury (at the Pattons) and Wallingford while attending Mill River Union High School. Over this time Vaidehi has learned about our culture while teaching us about hers. Vaidehi will give a presentation and tell us about her home in India and answer questions about her experiences here. Indian desserts will be offered following the presentation.

Benefit Concert with the Plumb Bobs

Saturday, June 3 @ 4pm on the lawn behind the Rotary Building in Wallingford: Come to a benefit concert featuring Shrewsbury's own Plumb Bobs. Longtime local Pastor Chris Heintz is participating in the 500-mile Empire State Bicycle Ride to Cure Cancer and raising funds for the cause. Free will offerings will be accepted at the event to support Chris' efforts. BYO chair.

Fishing Derby

Saturday, June 10--Save the Date! Wallingford Rotary Club will be hosting our annual Fishing Derby and Clinic from 9:00am to Noon. Details and directions will be provided in next month's edition of the Times.

Shrewsbury residents Barry Griffith (802 492 3573 bgriffithvt@gmail.com) and Randell Barclay (802 492 3794 randell.barclay@gmail.com) are members of the Wallingford Rotary Club and can be contacted for more information about Rotary and/or these upcoming events. (Submitted by Barry Griffith)



2450 Lincoln Hill Rd.
Shrewsbury Vt 05738



Small Farm Flavor & Quality

Try our pure Vermont maple syrup and see the small farm difference.

Bring a cooler, stock up on our
Grass-fed Beef,
Pork, Sweet Treats and Spices!

Farm Store Open: Sat, Sun, Mon, Wed, Thursday 10a - 5 p

Fri 10a - 3p, then 4p - 7p At Ludlow Farmers Market

We Ship Our Syrup All Over The U.S.

SmithMapleCrestFarm.com maplecrest.info@gmail.com

Times of Shrewsbury Online

<http://www.shrewsburyhistoricalsociety.com>
and
www.shrewsburyvt.org

NEW OWNER WANTED

2018 SALSA TIMBERJACK MOUNTAIN BIKE

Size: Small

Text/call for details.
802-353-7136.



Bone Builders

9-10am

Every Tuesday and Thursday
at the Meeting House on Lottery Road
Free weights and Instruction

Join us to improve your
Bones, Balance, and Strength



PVF Services LLC

Excavation, Trucking, driveway repair, site prep, building removal, brush grinding and much more!

Neal and Chad

1368 Lincoln Hill

Cell 802 236 8105

Shrewsbury Vt, 05738

Office 802 492 3364

sharrowmaple@gmail.com

FOUND ON GILMAN ROAD

Ski poles, blue and white with name on side (LW).
Appear to belong to older child.

Call or text 802-353-7136



Clarendon, VT \$579,000

Life Takes You Places

LET US HELP YOU FIND THE PLACE YOU DON'T WANT TO LEAVE



126 Main Street, Ludlow, VT 05149 +1 802-975-0338
okemo.evrealstate.com

©2023 Engel & Völkers, All rights reserved. Each brokerage independently owned and operated. Engel & Völkers and its independent License Partners are Equal Opportunity Employers and fully support the principles of the Fair Housing Act.

The Shrewsbury Singers Sing Again!

When?

Sunday Mornings
9:00AM – 10:30AM
May, June, July

Where?

The Russellville Schoolhouse
18 Crown Point Road, Shrewsbury

What Songs?

Songs sung in harmony from across the globe and spanning centuries.

Who?

Those who love to sing! All levels of experience are welcome.

For more information:

Licia Gambino
(802) 492-3792
hamgam@vermontel.net

Caravan Gardens

4536 Rte. 103 Cuttingsville



Coming Soon – Spring Seedlings!

Vegetable, Herb and Flower Starts
Seed Potatoes, Hanging Baskets,
Locally Grown Perennials

Greenhouses opening mid - May

**To pre-order your Organically
Raised Broilers or Seedlings
contact us at:**

**caravangardens@gmail.com
492-3377**

Why Do We Shop at Pierce's?

The reasons are too numerous to clearly explain in this short article. But to list them briefly:

Pierce's is an important part of Shrewsbury's history, and we are so lucky to have a fully functioning village general store that has been in business since 1865 and still serving our small community, now better than ever! It's the fulfillment of Marjorie Pierce's wish and legacy, to have the store continue to serve the community she loved and called home for almost 100 years.

Pierce's has what we generally need without driving to Rutland. A great wine and beer selection, fresh pastries, dairy, soda, ice cream, fresh fish, meats, fresh veggies, bread, coffee, gifts, bulk grains, canned goods, candy, cards, candles, you name it. Yes, it's not Hannaford's. It's a small country store catering to our community, stocking what its customers buy. If you want it and it's not there, just ask for it and it could be there for you next time you visit. Call ahead for convenience.

Pierce's supports Shrewsbury! Last year Pierce's "recycled" \$73,000 back into the community for local goods and services, \$64,000 in payroll to Shrewsberries and \$4,500 in Town taxes. A local business supporting local folks and businesses.

Pierce's is a place to meet and visit with your neighbors, catch up on "the news" and stay in touch. With wi-fi, tables on the porch and picnic tables, it's a place to relax, enjoy your coffee and watch the "traffic" go by in a quiet village setting. Also, there are regular wine tastings, beer tastings, and special events with great food.

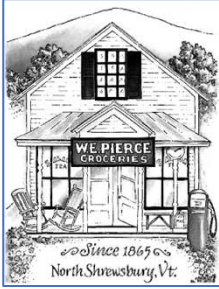
Small village general stores were historically essential to towns. They were where you generally got everything you couldn't grow or make at home. However, in today's economy with mega stores, Amazon and easy transportation, small stores can no longer support a shopkeeping owner-family. Marjorie's wise planning, by turning the store over to the Preservation Trust of Vermont, gives Shrewsbury a way to maintain its heritage and history, while also providing a convenient and unique place to shop right here close to home.

Pierce's is not located on a State highway, drawing in tourist traffic to a "cute country store". The store's continued success is largely dependent on it serving the folks in our small town. Buying goods at Pierce's will ensure the store continues its mission to serve Shrewsbury, and to grow and change as needed to serve our small town. Those are the reasons we shop at Pierce's!

See you at the store! ~Mark and Connie Youngstrom



MOTHER'S DAY
May 14, 2023



NEWS FROM PIERCE'S STORE 802-492-3326

Bob Knudsen, Manager

Happy May Day, Mother's Day, and Memorial Day, as well as any other holidays you celebrate this time of the year!

ICE CREAM, YOU SCREAM, PLEASE DON'T SCREAM TOO LOUD

Everybody knows Vermonters are famous for our ice cream, and Shrewsberries are no different! We are ramping up our stockpile for summer, including from our friends at Wilcox and Strafford, and we will be slinging Biggy Iggy and 802 bars as quickly as they come in! Not an ice cream fan? No sweat, we have some other frozen treats, including gelato from our friends at Larson and frozen yogurt from Wilcox! Orders come in every two weeks, and special-order pricing is available if you want to get a case or even just a few of any of the options we carry.

BAKED GOODS AND MOTHER'S DAY TREATS

Our baked goods are still coming in a few days a week, with Button Hill coming in on Wednesdays and Saturdays, Jones Donuts on Sundays, Rob's cinnamon rolls on Mondays, and The Bakery bringing cookies on Wednesdays. If demand continues to increase, we may be able to add even more options as the summer goes on!

If you want something a little more decadent, Rob J. will be making some of his famous cupcakes for Mother's Day! Due to high demand, these will be by special order only. Available flavors are Chocolate, Vanilla, and Lemon, and they will come in 6 packs. Please email Rob directly to order at coldrivercupcakes@gmail.com

SAVE THE DATES

Friday, May 26 from 5-7pm:

Beer tasting by Mt Holly Brewing
Food by Victoria's Authentic Mexican

Friday, June 23 from 4-6pm:

Sandy's famous Wine Tasting

Saturday, July 29 from 11am -2pm:

Pierce's Annual Blueberry Festival

Hold these dates and stay tuned!

Saturday, Aug 26 from 5-7pm

Event TBD

Saturday, Sept 16 from 5-7pm

2nd Annual Chilli Cook-Off

BEER TASTING AT PIERCE'S STORE

Springtime means beer season! Our neighbors at Mount Holly Beer Company will be joining us for a beer tasting on May 26 to share some of their most popular flavors. Come try some new options out – what you like will help us decide which of their beers we will stock throughout the summer!

ANNUAL MEETING FOLLOW UP

The annual meeting was a great success, with large attendance from a ton of members who are interested in helping the store succeed, so thank you all for coming and for your input! For those who couldn't make it by, the upshot is that we are continuing to improve and experiment with new options without abandoning popular and successful items and programs. We are trending in the right direction, and we are putting new procedures and policies in place that will help correct issues we have previously had. The goal is to now and, in the future, to continue to be a place for the entire community to enjoy, whether you want to buy local gifts, groceries, snacks, or lunch, or if you just want to come hang out and use the wifi or play some music! A big thank you to the dozens of volunteers and employees who work diligently to keep this community space going, as well as our customers who stop by to enjoy our goods.

BABY WATCH 2023

I will be heading out on paternity leave toward the middle of the month and plan to be out for about a month, but don't worry, we have the best staff around and they are all ready, willing, and able to take the helm! Thank you to everybody for all of your support and we look forward to introducing the newest Shrewsberry to the world!



Mark your calendar!
Shrewsbury Day
September 17, 2023

The Times of Shrewsbury
PO Box 373
Cuttingsville, VT 05738

PRESORT STD
US POSTAGE PAID
SHREWSBURY, VT
05738
PERMIT NO. 2

To: Postal Patron

Donors are recognized for the remainder of the calendar year in which their donation is received. The *Times* is mailed to all residents of Shrewsbury and is also available online. The cost of printing and mailing is made possible through advertising and donations and are very much appreciated, but are not tax deductible. Donations can be made to: *Times of Shrewsbury*, P.O. Box 373, Cuttingsville, VT 05738. **THANK YOU!**

Craig & Peggy Angstadt
Gary & Minnie Arthur
Roy Arthur
Nate & Angela Bailey
Steve Banik & Virginia Gundersen
Randell & Diane Barclay
Mike & Elizabeth Bedesem
John & Mary Beerworth
John & Linda Berryhill
Ludy Biddle
Rich & Cynthia Biziak
Laura Black
Kristi & Sandy Bragg
Virginia & Daniel Buckley
John & Linda Calotta
Jamie & Catherine Carrara
Christina Clarke
Peter & Theresa Clarke
Marilyn Dalick
Sally Deinzer
Phillipe & Linda Ducrot
Stan & Weezie Duda
Nils & Pamela Ericksen
Kathi & Tim Faulkner
Gene & Kathy Felder
Chuck & Luisa Finberg
Liz Flint
Eldred & Lily French
Licia Gambino
Jonathan Gibson & Eliza Mabry
Richard Gile & Sue Brown
Mark & Carol Goodwin
Pam & Peter Grace
Greenhagen Family
Barry & Barbara Griffith

John & Betty Heitzke
Betsy Hinckley
Bob & Connie Hoelscher
Carmine Iannace & Rita Gyls
Martha Herbert Izzi
Jeffrey & Diane Jakobsen
Jack & Betsy Jesser
Ellen Jorgensen
Martin Kimmig & Julia Latein-Kimmig
Michael & Angie Lauri
Gerry & Chryl Martin
Paddy Martin & Alice McGarey-Martin
Stephen & Patricia Martyn
Taffy Maynard
Lynn McDermott
Jeff & Pam Monder
Moody Family
David & Georgia Mosher
Jack & Joan Mulqueen
Raymond & Cheryl Noble
Kay O'Dowd
Fran Patten
Elizabeth Pattullo
George & Doris Perry

Jack & Sharon Perry
Roxanne Ramah
Ed & Adrienne Raymond
Russell & Donna Reay
Rainbow Riding
Helen & Andy Richards-Peelle
Ridlon Family
Ed & Judy Ryan
Thomas & Donna Ryan
Gary & Margery Salmon
Susan Savage & Irv Gordon
Brian & Patricia Sedaille
Paul Sgalia & Vicky Arthur
Alan & Linda Shelvey
Shrewsbury
Conservation Commission
Historical Society
Library
Outing Club
Volunteer Fire Department
Bob & Sally Snarski
Spring Lake Ranch
Wendy Stewart
Tim & Nancy Stout
Paul & Sarah Titterton
Jess & Ariane Torres
Beau & Cady Tudzarov
Liesbeth van der Heijden
Howard & Deborah Weaver
Michael & Phyllis Wells
Nancy West
Christel Wiedmann
Lee Wilson
Winkler Family
Mark & Connie Youngstrom

