



Times of Shrewsbury

June 2023



CLIMATE RESILIENT TREES PLANTED IN SHREWSBURY

Jockey Hill Farm just signed their contract with the American Forest Foundation to participate in the Family Forest Carbon Program, the first carbon program geared specifically to small landowners in Vermont. I'm pleased with the final program and am always happy to answer questions about it. But enough on carbon.

A major focus in 2023 is on planting climate resilient trees. Over the weekend of May 19, family and friends helped me plant 180 trees including basswood, red oak, hickory, black cherry and bigtooth aspen to name a few. This builds on the 150 trees we planted in 2022 including 50 hybrid American chestnuts. Why are we focused on climate resilient trees? This focus is part of what's called "assisted-migration", planting trees that grow further south that are projected to slowly move north with climate change.

The UVM Magazine recently published an excellent article on this titled "To Save the Forest, Should We Move the Trees?" which can quickly be located on a Google search. Our objective at the farm is to replicate on a small scale the extensive research UVM is conducting across the State. We're interested in seeing which of the 10 species we plant will thrive in our climate and soil conditions. We've been working closely with a few forestry professors at UVM to select the most appropriate trees, to choose compatible sites on the farm and to properly care for the trees.

The chart below shows many of the projects we're balancing at the farm under expert advice from UVM, The Nature Conservancy, Vermont Land Trust and numerous other organizations around Vermont and Massachusetts. What's particularly interesting about these projects is that they're all interrelated within the scope of a changing climate. For example, the 61 species of birds as identified by Linda Shelvey and friends that we have at the farm are critical to the health of our forests and fields by helping control insects that

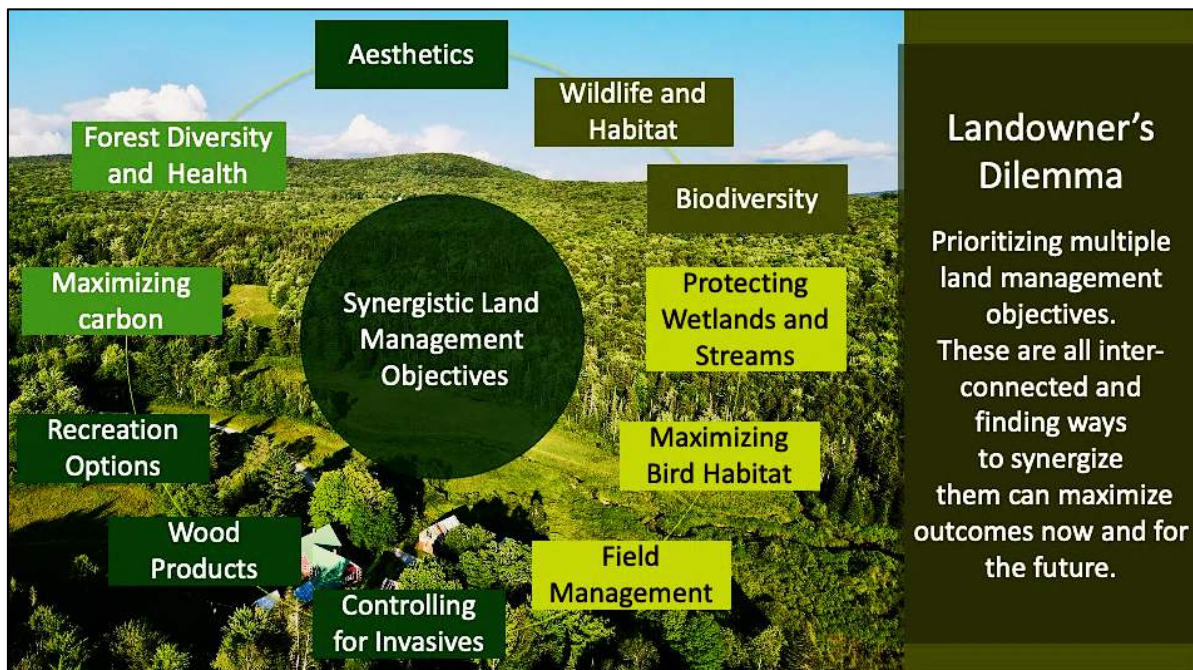
may damage our trees. Light harvesting of trees for wood products allows us to shift toward greater age and species diversity in our forest, creating a more resilient forest. It also helps support the Vermont economy. With the help of Pam Darrow, we're exploring how better to control the seven species of invasive plants we know we currently have. Without this control, invasives threaten the future of native plant species, particularly in recent patch cuts and on the border of meadows and forest at this time.

Invasive insects are another major challenge. Threats to our forest in turn threaten the ability of our forest and those around Vermont to sequester and store carbon, an essential natural solution to climate change.

What we most enjoy about this work is the level of information exchange we have with people across Shrewsbury who have a wide variety of expertise in land and wildlife management. It's been a rewarding way to meet many interesting people. We also feel particularly fortunate to live in a State that provides amazing land and wildlife management resources to landowners. We're currently working with Vermont Woodlands Association and Vermont Coverts to offer field trips at the farm this summer. More to come.

The farm is open to anyone interested in just walking the trails (maps are provided at the bridge at 630 Coldham Rd) or a tour of the above projects. If interested, please contact me at stoutim@gmail.com or 617-899-1011.

~Article and graphic by Tim Stout





Sue & Crystal



Angie



Davis & Gretchen



Heather



Jeremiah

GREEN UP DAY!

The first Green Up Day was held in April 1970 and since then has become a Vermont tradition on the first Saturday of May. It is likely our town has actively participated from that first year to help clean up this beautiful place we live in. This year 19,000 Vermonters picked up 497 tons of trash and cleaned up more than 75% of the states 13,000 miles of town roads.

Here in Shrewsbury, we had a great turnout, with 100% of roads cleaned up, thanks to 90 hard working volunteers who cleaned up 57 miles of our roadway. Gathering at the Meeting House at 8 am, folks enjoyed a fine breakfast spread provided by Michelle Suker of Vt Bliss Catering. Thank you, Michelle! Green collecting bags and road sign assignments followed after the breakfast party and off went the volunteers. A beautiful, cool day just added to the enjoyment. Jeremiah St. Pierre counted 88 green bags going into the hopper while SCC volunteers sorted through the trash for returnables and recyclables. Thank you, Jeremiah and Paul for being at the Transfer Station for us! And many thanks to all of you for making Green UP in Shrewsbury the best ever!!

~Article and photos by Connie Youngstrom

SHREWSBURY TOWN CLERK

New Hours:

Monday: 8:30am-12:30pm & 1:30pm-3:30pm
Tuesday: 7:00am-1:00pm
Wednesday: 8:30am-12:30pm & 1:30pm-3:30pm
Thursday: 10:00am-4:00pm
Friday, Saturday, and Sunday: CLOSED



Bone Builders

9-10am

Every Tuesday and Thursday
 at the Meeting House on Lottery Road
 Free weights and Instruction

Join us to improve your
 Bones, Balance, and Strength

TIMES OF SHREWSBURY

The Times of Shrewsbury is published monthly from February through December, and compiled by volunteers from material submitted by residents with the goal of informing townspeople of what is happening in Shrewsbury. The views and opinions expressed in articles are solely those of the author and not necessarily those of the editors.

All submissions must be accompanied by the name of the submitting person and are printed at the editors' discretion subject to editing for length and clarity. Letters to the Editor exceeding 350 words will be subject to editing for length. Any information piece or informational political letters (without specific party or vote appeal) will be subject to the guidelines previously described.

A writer of a letter that names a Shrewsbury resident or organization in a critical manner must get copies to the resident or organization, and to the Times by the 10th of the month prior to publication or it will not run. If the named person or organization indicates in writing to the writer and to the Times that they choose not to respond, the letter will run. If the named entity responds, the response and initial letter will run in the same issue.

There is no charge for: jokes, poems, nature reports, family event announcements, or feature articles or letters that are not commercial.

Articles and Advertisements: Deadline for submission is 5pm on the 20th of the month prior to publication; exceptions will be announced in the prior month's Times.

Ads in the Times are for area businesses, local non-profit events, and local ballot election advertisements.

Best Formats: Articles: Word or as an email message with no formatting. Photos: jpeg. Ads: jpeg or Word document.

Monthly advertising fees and relative sizes:

Full page	\$100	(7.5"w x 9.5"h)
Half page	\$60	(7.5"w x 4.5"h or 3.5"w x 9.5"h)
Quarter page	\$12	(7.5"w x 2.5" h; or, 3.5"wx 4.5"h)
Business card	\$6	(3.5"w x 2"h)
Classified ad	\$3	(15 words or less)

Payment due by the 20th of the month prior to publication.

5/1/2023

Chryl Martin

~ Rich Biziak

Times of Shrewsbury, P. O. Box 373, Cuttingsville, VT 05738

Email: shrewsburytimes@gmail.com

Online: www.shrewsburyvt.org and

<http://www.shrewsburyhistoricalsociety.com>

SHREWSBURY COMMUNITY CALENDAR

May 26	5-7pm	*Beer tasting at Pierce's Store with Mt Holly Brewing and catered Mexican fare
May 27 & 28	10am-5pm	Vermont Crafts Council Open Studio Weekend
June 2	7pm	*Presentation on being a Page at the Vermont State House by Cabot Spatz at the Library
June 9	7pm	*Castleton author Martha Molnar will read from her new book at the Shrewsbury Library
June 11	3:30pm	*Writers' Group meets at the Shrewsbury Library
June 16	5-6pm	*Shrewsbury Meeting House Outdoor Concert Series with Faux Paws
June 17	9:30am-12pm	*"Walk Among The Ferns" with Lynn Levine presented by the Shrewsbury Cons. Comm.
June 18	4pm	*Famous Books Book Club meets at Shrewsbury Library
June 23	4-6pm	*Wine Tasting at Pierce's Store
June 25	7pm	*Science Book Club meets at the Shrewsbury Library
June 27	noon	*Prayer Shawl Group meets upstairs at the Meeting House
June 28	7pm	*Northam Cemetery Association at either the Town Office or the Northam Fire Station
June 30	5-6pm	*Shrewsbury Meeting House Outdoor Concert Series with Satyrdrag
July 2	1-3pm	*Shrewsbury Historical Society Museum opens for the season

*see elsewhere in newsletter for details

TIMES OF SHREWSBURY

online at

www.shrewsburyhistoricalsociety.com
and
www.shrewsburyvt.org



Deadline for submission to *Times of Shrewsbury* is by 5:00pm on the 20th of each month.

REGULAR MEETINGS and EVENTS

Selectboard Meeting	1 st & 3 rd Wednesdays – 6:30pm at Town Office
Bone Builders	Tuesdays & Thursdays – 9am at Meeting House
Development Review Board	4 th Wed -7pm at Town Office; check town website for agenda
Library Trustees Meeting	2 nd Tuesday – 7pm at Shrewsbury Library
Mill River Unified Union School Board Mtg	1 st Wed 7pm @ MRHS & 3 rd Wed. 7pm at MRHS unless otherwise warned
Planning Commission	2 ⁿ & 4 th Tuesdays 7pm at Town Office
Religious Society of Friends (Quakers)	Sundays – 10am via Zoom; contact wildernessfriends@gmail.com
Shrewsbury Community Church	Sundays – 10:30am - Worship service and Kids Funday Program
Shrewsbury Conservation Commission	1 st Tuesday of every month! 5:15pm at 450 Frank Lord Road
Shrewsbury Historical Society	May 21, 2023 @ 3pm in the Museum
Shrewsbury Historical Society Museum	Opens first Sunday in July, 2023 from 1 to 3pm
Shrewsbury Singers	Sundays 9-10:30am @ Russellville Schoolhouse (May, June, July)
Shrewsbury Sno-Birds	2 nd Tuesday – 7pm at Southside Steakhouse in Rutland
Shrewsbury Volunteer Fire Department	Thursdays – 7pm at the Cuttingsville Station

Shrewsbury Town Website: www.shrewsburyvt.org

Clerk's Office	492-3511	Mon & Wed: 8:30am-12:30pm & 1:30pm-3:30pm	Tues: 7am-1pm	Thurs: 10am-4pm	Fri: Closed
Town Garage	492-3656	(Follow prompts to report roadway blockage on non-work days)			
Listers	492-2009	Available by appointment			
Treasurer's Office	492-3558	Monday 9am-11am			
Transfer Station	492-3867	Sunday 8am-4pm ~~ Wednesday 12noon-6pm			
Library	492-3410	Hours: Mon 10am-12noon; Tues 7-9pm; Wed 10am-5pm & 7-9pm; Thurs 7-9pm; Fri 10-12noon; Sat 10am-12noon			
Meeting House	492-6050	Reservations: 492-3361 <i>or</i> julanne@vermontel.net			
News Flash Email:	vtbenbeano@gmail.com <i>or</i> benbeano@vermontel.net an email list for uUrgent and reminder news information]				

Cuttingsville Post Office 492-3585 Window Hours Mon-Fri 7:30am-10:30am & 11:30am-2:30pm; Sat 8am-11am.

Lobby Hours Mon-Fri 7:00am-7:00pm and Sat 7:00am-4pm

Burn Permit: Forest Fire Warden Kevin Brown 802-345-8668 or, Deputy Fire Warden Al Ridlon, Jr. 802-282-3642

Animal Control Officer: Vacant (Contact a Selectboard member) 1st Constable: Aaron Haupt 558-9980

Game Warden: Tim Carey 793-2776

Emergency Management Aaron Korzun 492-3362 Green Mountain Power outage 1-800-451-2877

Medical-Police-Fire Emergency Dial 911 Ambulance 773-1700 Rutland Hospital 775-7111

[Updated 05/22/23]

SHREWSBURY SELECTBOARD MINUTES

The Selectboard meets the 1st and 3rd Wednesday at 7pm at the Town Office.

May 3, 2023: Minutes of Selectboard Meeting

Present at meeting: Selectboard members: Aaron Korzun, Marc Cimonetti, Francis Wyatt.

Members of the Public: None

The meeting was convened at 6:38 PM

Agenda: Motion made by A. Korzun to follow the agenda with the additions of: Approval of letter requesting Grand List filing extension. F. Wyatt seconded. All in favor, motion approved.

Appointments -Cemetery Commissioners, 1st Constable: F. Wyatt made a motion to appoint Bennie Carrara and Eric Carrara as Cemetery Commissioners. A. Korzun seconded. Approved. A. Korzun made a motion to appoint Aaron Haupt as 1st Constable. F. Wyatt seconded. Approved.

Grand List filing extension: Lisa Wright and the Board of Listers request that the Town file for a 30 day extension for filing the Preliminary Grand List. A. Korzun made a motion to approve the letter. F. Wyatt seconded. Approved.

New Business: Marc Cimonetti reported on the meeting regarding the Town audit. Discussed various future projects for Town buildings.

Review Minutes: A. Korzun made a motion to accept the 4/19/2023 Selectboard meeting minutes. Seconded by M. Cimonetti. Approved.

Review Orders: F. Wyatt made a motion to approve Selectboard Orders #5 for \$2,025.84 and Road Orders #5 for \$6,022.16. Seconded by A. Korzun. Approved.

Adjourned at 8:20 PM

Respectfully submitted, Francis Wyatt

These minutes are unofficial until approved by the Selectboard at the next regularly scheduled meeting.

May 17, 2023: Minutes of Selectboard Meeting

Present at meeting: Selectboard members: Aaron Korzun, Marc Cimonetti, Francis Wyatt. Interim Administrative Assistant: Laura Black.

Members of the Public: None

The meeting was convened at 6:45 PM

Agenda: Motion made by A. Korzun to follow the agenda. Marc Cimonetti seconded. All in favor, motion approved.

Accounting Software: The Treasurer informed us that the accounting software is increasing in costs and that she is exploring other possibilities for the future.

Emergency Shelters: Aaron Korzun made a motion to add the Town Garage as an alternate emergency shelter in the 2023 LEMP. M. Cimonetti seconded. Approved.

Building Maintenance: Discussed wood heating systems for the new town garage and other heating options such as an air-to-water heat pump. Discussed roof possibilities for the new town garage.

Briefly discussed Center town garage and structural issues.

Digitize Project Report: Laura Black discussed quotes for digitizing records. There will be a price for the indexing, a price for scanning the records and a price for maintenance. The Selectboard instructed Laura to continue moving ahead and put together an RFP and coordinate with the Town Clerk.

New Business: None

Review Minutes: A. Korzun made a motion to accept the 5/3/2023 Selectboard meeting minutes. Seconded by M. Cimonetti. Approved.

Review Orders: F. Wyatt made a motion to approve Selectboard Orders #5a for \$5,071.13 and Road Orders #5a for \$7,709.03. Seconded by A. Korzun. Approved.

Adjourned at 8:54 PM

Respectfully submitted, Francis Wyatt

These minutes are unofficial until approved by the Selectboard at the next regularly scheduled meeting.

Editor's Note: The minutes have been edited for brevity but not content. For complete minutes, go to the Town website www.shrewsburyvt.org



The Shrewsbury Mountain School PTO is offering an end of **Summer Bottle Drive**.

Please consider saving your bottles & cans to help support our school activities.

We will come pick up your supply. Please stay tuned, pick-up weekend will be announced soon!

If you prefer to keep your storage areas neat & tidy, we now have an account open at Olivia's Market Redemption Center. Visit them anytime during their open hours with your returnables, and tell them you would like to donate the earnings to the Shrewsbury Mountain School PTO.

Contact Angie Sharrow at 492-2092 with any questions.

NEWS FROM MONTPELIER

Notes from the legislature. We have officially adjourned, at least for the month. On the process, I'll note that we adjourn as soon as we've passed the budget, so after a long day floor debate on Friday, May 12th we passed the budget, received closing remarks from House party leaders and the Governor, and adjourned at 11:30pm.

As I said last month while almost everyone agrees on about 98% of the spending in the budget we passed, there are strong disagreements on that other 2% and we fully expect the Governor to veto it so we'll have to go back to sort that out in June. I stand by the work we did in the budget and otherwise. We passed multiple major bills that make substantial investments to address some of the most pressing issues in our district and around the state, and we did so with broad, tri-partisan support. While the budget was more divisive and mostly party-line, the major housing bill passed the House 135-11 and the childcare bill passed 118-27.

I'll dive more into the Housing bill next month, but the broad strokes are some temporary, some permanent relaxing of Act 250 permitting requirements, some changes in municipal zoning requirements for towns that have zoning and a lot of different housing programs to benefit groups of Vermonters at various income levels. Although because we generally appropriate money in the budget, the Senate took the major investments out of these programs and they will only go forward after we pass a budget.

The childcare bill was a bigger one for me personally. I have somewhat mixed emotions because I continue to think there is an elephant in the room we failed to address which is over-regulation. We all want safe and affordable childcare, but I think the state demands a lot from providers and that may be driving providers underground or keeping them from registering with the state in the first place. This bill does not address that issue. The bill restructures the Childcare Financial Assistance Program run by the state to pay providers based on enrollment instead of attendance, so their pay is more consistent, and increases eligibility for that assistance and the payments they receive, lowering expected copays from parents. It includes a

payroll tax increase to pay for this of 0.44%, 75% of which will be paid by employers and 25% by employees, so 0.33% and 0.11% respectively. If you make \$30,000/year, this amounts to an increase of \$33/year paid by you, \$99/year paid by your employer. The bill also includes a study about increasing preschools to full time for 4-year olds. I personally do not like that idea so am glad to see a study first, I worry that such a move would only further destabilize our home-based providers and make it harder for them to earn a living.

I intend to once again write a bigger, longer recap of all the bills passed but plan to wait and see what the Governor vetoes first (and what vetoes we are able to override). As always please reach out about this or anything else anytime, I do ask that you call/text my phone or reach out to my new email address as opposed to any other, I just get too much spam on all others.

Submitted by Logan Nicoll, State Representative
Ludlow, Mount Holly, Shrewsbury
RepLoganNicoll@gmail.com 802-345-8430

Employment Opportunity

Town of Shrewsbury is accepting applications for
Road Crew member

Work includes: plowing, ditching, road repair, roadside mowing, culvert work, chainsaw operation, equipment maintenance, and other duties.

**Benefits include 100% Town paid
Medical and Dental insurance**

A clean driving record, CDL Class B License, and ability to pass drug/alcohol test required.

Northam Cemetery Association Annual Meeting

Will be held Wednesday June 28, 2023 at 7:00pm at either the Shrewsbury Town Office OR Northam Fire Station. Any questions, PLEASE call Catherine Carrara 802-492-6137



Alan G. Ridlon, Sr.

Alan G. Ridlon, Sr. of Shrewsbury passed away on May 1, 2023 at Rutland Regional Medical Center. He was born on August 6, 1937 in Rutland to the late Edgar and Edna (Bussino) Ridlon Sr. He graduated from Mount Saint Joseph Academy in 1956. Al's family always came first. He was devoted to his wife Ann with whom he shared 65 years of marriage. He was not only a



father, but a friend to his son Alan Jr. (Kimberly) of Cuttingsville. He was proud to be "grandpa" to Josh Ridlon (Amy) of Proctor, Emelie Ridlon Taylor (Mike) of Cuttingsville. The brightest stars in his life were his great-grandchildren Liam, Evan, Gracyn and Maggie May.

He was a Charter member of the Shrewsbury Volunteer Fire Department. He was also a Charter member and the fire chief for 20 years of the Clarendon Volunteer Fire Department. Other hats that he wore during his lifetime were farmer at the Alfreacha Farm in North Clarendon, owner of Al Ridlon Builder, Sugar maker, Leader of Camp TRAF, President of Vermont State Firefighters Association, Superintendent of the Cattle and Farm Museum, Superintendent and Treasurer of the Vermont State Fair. Member of Mount Moriah #96 Freemasons, a member of the Vermont Builders Association. Past President of Shrewsbury Historical Society and Captain of the Shrewsbury Bocce Team at the Italian American Club.

To describe Al as a hard worker is an understatement. He epitomized the spirit of a hardworking, dedicated and giving Vermonter. Al will be remembered for his dedication to his communities and unwavering commitment to helping others. He is survived by his brother John (Peggy) Ridlon of California, sister Barbara Reilly of Florida, sisters-in-law Jean Murray of Clarendon and Nancy Ridlon of West Rutland. He was predeceased by his parents, brother Edgar Ridlon Jr., brothers-in-law Phil Pinkowski Jr., Jim Reilly, David Murray and his beloved companions Skunker and Ella.

In lieu of flowers, donations are welcomed to the Shrewsbury Volunteer Fire Department, c/o Barry Griffith, 68 Griffith Rd, Shrewsbury, VT 05738. Clarendon Volunteer Fire Department, PO Box 168, No. Clarendon, VT 05759 or Shrewsbury Historical Society, c/o Catherine Carrara, 2544 Northam Rd, Shrewsbury, VT 05738.

A gathering will take place on June 2nd from 4pm – 6pm at the Shrewsbury Volunteer Fire Station, Town Hill Road in Cuttingsville. A private burial will be held at the East Clarendon Cemetery.

Times of Shrewsbury

Online

<http://www.shrewsburyhistoricalsociety.com>

and

www.shrewsburyvt.org

Remembering Al Ridlon, Sr.

When Al Ridlon, Sr. was building our future home in the early 70s, we "Long Islanders" could hardly wait to drive up to check its progress every other weekend. Al's name was recommended to us by George Richards, our Shrewsbury mailman at that time. We met with Al at our motel unit at the Mt. Holly Lodge in 1973 and knew from his handshake that we could count on him.

Who else would hang a small branch with an empty bird's nest attached to it on the wall in the vestibule? By then he knew we were nature lovers. Or, who would secretly hang a handmade Christmas wreath to our front door and continued to do that every year since. Or letting his son at 13 years old help his crew to put up the roof. (I have photos.) Or who else would handwrite a house blessing on a wood plaque in the basement? Or fashion a meter box on outside wall that was a miniature version of our house because I do not like the look of meter boxes.

Our friendship has continued for 50 years now. So many happy memories to remember.

To my dear sweet Ann, and Al Jr., Kim and family, we extend our sincere condolences. I can't help but wishfully think that in God's Heaven Al, Sr., B-J and Con are enjoying a joke or two.

*~Ruth and Brian Winkler,
and Jennifer Winkler Lauri and family*

LARRY CARRARA

CELEBRATION OF LIFE

8/9/1937 - 1/4/2023



The Family of Larry Carrara invite you to join us as we celebrate his life and legend. We hope that you can share some memorable stories of the man who put Shrewsbury on the map with the Moose and Cow love affair.

The event is being catered with the exception of desserts. If you care to bring some goodies, your generosity will be greatly appreciated.

The celebration will be held outdoors if weather permits. Otherwise, we will be inside the Meeting House.

Please bring chairs and beverages of your choice. Water, coffee, and lemonade will be provided.

JUNE 3, 2023 12:00-4:00pm
SHREWSBURY MEETING HOUSE
88 Lottery Road, Shrewsbury, Vermont



SHREWSBURY VOLUNTEER FIRE DEPARTMENT

This past month, the SVFD responded to one mutual aid call to Clarendon which was cancelled while we were enroute. There were no brush fires in town, thanks for being aware of the conditions.

We accomplished many maintenance tasks throughout the month of May. The Cuttingsville and Northam standby generators were serviced as was our furnace at Northam Station.

Several members trained with the pre-connected pump and the portable pump on Tanker 2. Several members attended a CPR and AED re-certification class provided by Regional Ambulance.

The SVFD was represented at the Loyalty Day parade with Engine 2.

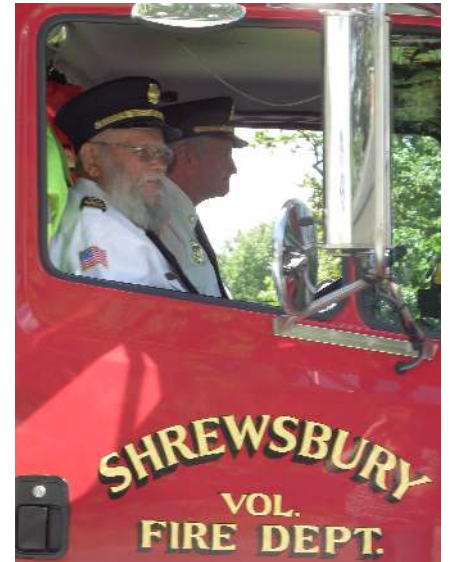
Lastly, we regretfully announce the passing of Charter and founding member Al Riddon, Sr. Al began participating in the fire department in 1956, he was 15 years old. Several local men realized the need for a volunteer fire department in Shrewsbury. Al stayed with Shrewsbury until the early 60's when he moved to Clarendon and founded the Clarendon Volunteer Fire Dept. He served as Chief for 20 years in Clarendon before moving back to Shrewsbury in the 80's, at which time he re-joined Shrewsbury. Al was a participating member of SVFD until his passing. Al was a dedicated firefighter and gave much of his time to the community. The fire department was Al's passion. You could always count on his attendance at any committee, fire scene or fire department related event. He was willing to assume any role, from pulling hose, picking up equipment, fighting a fire, or driving a truck! His administrative knowledge of protocols, operations and his personal and professional connections statewide were invaluable to Shrewsbury. He



On the department's Thursday night meeting following Al's passing, the SVFD, Clarendon and Mt Holly Fire Departments marched to Al's residence, lined the driveway and came to attention while an announcement of his passing was broadcast on the Rutland County Mutual Aid Radio system.

always shared his wisdom, advice and experience to train the next generation. Sometimes this led to some spirited discussions!

Al was a member and past President of the Vermont State Firefighter Association, he sat on the Executive Board and assisted in the planning of state Firefighter Conventions. He refereed at the muster game events and judged the truck competitions. To say that firefighting ran in Al's veins, would be an understatement. These are only a few examples of Al and his family's dedication to the fire service!



Al and Al Jr in the fire truck together.

There will be a private burial for the family followed by a gathering at the Cuttingsville Station Friday, June 2 from 4-6pm. All are welcome to stop by and share a story about AL!! and REMEMBER

Stay Fire Safe!!

~Submitted by Jack Perry

UPCOMING...

MUSIC CLASSES

Offered by Licia Gambino

Summer Session - July & August

Flute Lessons

All Levels of Experience

Ages: 9 years – Adults

Music Classes for Kids

Singing games, Recorder, Percussion & Movement

Ages: 8 – 11 years (flexible)

Family Music

Singing, Movement, & Instrument Play

Ages: Babies – 7 years, with an Adult

For more information:

Licia Gambino ~ (802) 492-3792

hamgam@vermontel.net

SHREWSBURY LIBRARY

Library News Submitted by Joan Aleshire

LIBRARY & FOOD SHELF HOURS

Monday 10am to 12pm

Tuesday 7pm to 9pm

Wednesday 10 a.m. to 5pm & 7pm to 9pm

Thursday 7pm to 9pm

Friday 10am to 12pm

Saturday 10am to 12pm

* Please don't visit if you're not feeling well, and wear a mask if you want.

* To search the Library Catalog, put a Hold on a book or DVD in our collection, or get the latest Library news, please go to: www.shrewsburylibrary.org.

At the Annual Meeting on May 9, the current officers were re-elected: JOAN ALESHIRE & LISA SHARROW: Co-Presidents; TRISH NORTON, Vice-President; GAIL HARTIGAN, Secretary (Recording & Corresponding); and LISA SHARROW, Treasurer. CYNTHIA THORNTON was elected to another 3-Year Term as Trustee. MANY THANKS to all for serving the Library!

We're sorry to say that DIANNE BARCLAY stepped off the Board at the end of her current term. DIANNE has been an exemplary Trustee, always willing to volunteer for open shifts, attend meetings, and take part in committee work. We will miss her supportive presence, sense of responsibility, and wise counsel, and are glad that she will continue to staff when she has time! THANK YOU, DIANNE!

We now may have an OPENING on our 13-member Board of Trustees for a new 3-year term. We are in the fortunate position of having a Waiting List of people who have expressed an interest in serving, and need to check with them to see if one of them wants to join the Board now, or to be kept on the Waiting List, before opening the position to the public.

* INTERESTED IN JOINING THE BOARD? If you love libraries and believe in their work of fostering learning and community; can attend Board meetings the second Tuesday of every month; staff during Library hours; and are willing to serve on one of our committees, please contact a member of the Nominating Committee:

Gail Hartigan(gailhartigan382@gmail.com);

Trish Norton (knsh@vermontel.net); or

Lisa Sharrow (cutsvil@vermontel.net).

We will be happy to consider you as a Board Member or add your name to the Waiting List.

MANY THANKS to CARRIE CLANCY for writing our grant application to the Vermont Humanities Council to receive free copies the 2023 VT Reads Book, *Last Night at the Telegraph Club*, for reading and discussion. And MANY THANKS to CHRYL MARTIN for obtaining VT Reads Books for our community over many years. We're grateful to both of you!

RAFFLE TICKETS are going fast! Stop in at the Library to admire the "Trees Quilt," and buy tickets before the drawing on August 5, at the Street Dance.

Coming Events:

Friday, June 2 @ 7 pm CABOT SPATZ will talk about his work as a legislative Page at the VT State House. NOTE CHANGE OF DATE from May 26!

Friday, June 9 @ 7pm: Castleton author MARTHA MOLNAR will read from and discuss her new book, *Playing God in the Meadow: How I Learned to Admire My Weeds*. (Co-sponsored by the Shrewsbury Conservation Commission)

Continuing Programs:

Sunday, June 11 @ 3:30pm WRITERS' GROUP. Please join us if you have poems, short fiction, or journal entries to share (1,000 word limit). For more information, Contact Penelope Weiss (pw9@earthlink.net) or Joan Aleshire at (joanaleshire@vermontel.net).

Sunday, June 18 @ 4 pm: FAMOUS BOOKS BOOK CLUB: One more discussion of Goethe's *Faust* Parts 1 & 2! If you need a copy, please contact Joan.

Sunday, June 25 @ 7pm: SCIENCE BOOK CLUB: Next two months: *The Code Breaker*: Jennifer Doudna, Gene Editing, and *The Future of the Human Race* by Walter Isaacson. Print copies and e-books are available; if you want to join the group, please contact Margery Salmon (salmonm@vermontel.net)

New Books include:

- *Trust*: a novel by Hernan Diaz, co-winner of this year's Pulitzer Prize with Barbara Kingsolver's *Demon Copperhead* (which we also have).
- *The Wager: Shipwreck, Mutiny and Murder* by David Grann: Adventure on the high seas, by the author of *Killers of the Flower Moon*.
- *It Goes So Fast: The Year of No Do-Overs* by Mary Louise Kelly: A moving memoir by the well-known journalist about life with her teenaged son.
- *Small Mercies*: A novel by crime novelist Dennis Lehane, set in South Boston.
- *In Memoriam*: A novel about England during World War I, by Alice Winn.
- *The Last Honest Man: The CIA, the FBI, the Mafia and the Kennedys* by James Risen: A biography of Frank Church.

New DVDs include:

- *Living*, with Bill Nighy, a British re-make of Kurosawa's *Ikiru*.
- *Turn Every Page: The Adventures of Robert Caro and Robert Gottlieb*: A surprisingly riveting documentary about the biographer and his editor.
- *All Quiet on the Western Front*: The new, award-winning re-make of the classic.
- *Return to Seoul*: A dramatic feature about a Korean woman raised in the U.S. who returns to her roots.
- *Succession: Season 1*: The popular TV drama, available for binge-watching!



June 14, 2023



BOOK REVIEWS

***** *Fantastic*
 ***** *Compelling page turner*
 *** *Enjoyable*
 ** *Just O.K.*
 * *Not recommended*

The Periodic Table

by Primo Levi

★★★★★

This 233-page memoir is an imaginative pursuit of conveying the elements in prose. There are 21 short stories, each named for a different element. The chemist author, Primo Levi, sees the poetry in creating a bridge between physical and human nature. Only someone like him, who walks deftly in both worlds could attempt such a feat. Most of the tales are so unusual, filled with characters and pursuits that leave one mesmerized. Each verges on the brink of magical realism, the stories are that unusual. If you want to read something very different, I would recommend this book to you.

~Review by Marilyn Dalick, Science Book Group

UNDER THE GOLDEN DOME in MONTPELIER



Learn about the work and experience of a
Legislative Page from Shrewsbury's
Cabot Spatz

at the

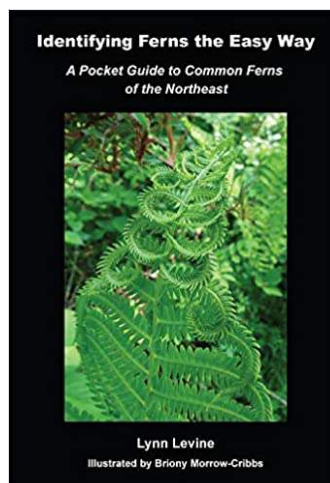
Shrewsbury Library
FRIDAY, JUNE 2 @ 7pm

****Note Date Change****



**The Shrewsbury Conservation
Commission**
 invites you to join

Lynn Levine on a Walk Among the Ferns!



Ferns are truly amazing plants that have been around for millions of years and have successfully adapted to changing conditions throughout that time. Join Forester, Naturalist, and Author, Lynn Levine, to learn everything you need to know about common ferns of our region. Lynn will take us on a hands-on learning adventure to familiarize us with a variety of common ferns and other natural wonders we encounter. Lynn Levine has been a consulting forester, environmental educator and

naturalist with many talents. Lynn has created more than a dozen interpretive nature trails, with her most recent one incorporating an Abenaki perspective. She has worked with both children and adults and has taken thousands of people into the forest to share her love of nature, and to spur others to feel the same. She has found that teaching about how plants connect through tree, tracking and fern identification are powerful ways to spark and enhance that bond. Levine has co-authored: *Working with Your Woodland: A Landowner's Guide and Mammal Tracks* and *Scat: Life Size-Tracking Guide*. She is the author of: *Mammal Tracks and Scat: Life-Size Pocket Guide*, *Snow Secrets*, *Is it Time, Yet?* and *Common Ferns of the Northeast*, the Winner of the 2019 Informational Nonfiction Book Award. Discounted books will be available for sale after the workshop.

**June 17 light rain or shine
 (June 18 rain date)
 9:30am – 12noon**

Meet to Carpool at the Meeting House

Please be on time as we will
 depart to a nearby location at 9:30am.

Important Note: The guided walk has some uneven/unlevel terrain, variable ground conditions, and moderate hiking. Unless there is hazardous weather, this program will occur rain or shine.

Every participant will given a signed copy of Lynn's recent book, *Identifying Ferns the Easy Way*, to use on the walk therefore there is a charge for this special event to cover the cost of the book. This event is limited to no more than 15 people and

Registration and prepayment of \$10 is required.

To Register: email or text Weezie to get on the list and then mail a check made out to the SCC. vtzipcity@gmail.com or 802-558-5519. Send checks to 450 Frank Lord Road, Shrewsbury VT 057389

Shrewsbury Historical Society

www.shrewsburyhistoricalsociety.com



Union House
(1854 Dow's Tavern; 1869 H. Todd's Hotel; 1980 site of John C. Stewart & Son Inc.
Ford Agency)

Photo from "Shrewsbury As It Was" by Dawn Hance.

Cuttingsville in 1903

One hundred and twenty years ago the following article appeared in a local newspaper dated May 1, 1903:

"The village of Cuttingsville in the town of Shrewsbury, was almost destroyed by fire Saturday night. The Union hotel and barn, Stewart's store and barn, Foster's house and barn, the Bucklin place and the old vestry, used recently as a store house, were burned to the ground. There was no way of extinguishing the fire and when a steamer arrived from Rutland at one o'clock in the morning it was too late to be of much service. The burned buildings were on the east side of the main street opposite the post office and extended from the Mill River bank to Mrs. Helen Crowley's house. The loss is \$20,000 which is partially covered by insurance. The fire broke out in the woodshed of the Union House at about ten o'clock in the evening from some unknown cause. Nothing was rescued from the hotel but a piano. A little furniture was taken from some of the houses."

Another large building was erected on the hotel's site; however, the town had become a "dry" town and alcohol was not permitted, therefore the building was used for many years by the Stewart family selling Ford automobiles.

Fast forward to April 12, 2021

Also, in Cuttingsville, opposite the Society's Museum, the beautiful ca. 1840 home turned into the Shrewsbury Inn, purchased and restored by the Butler family, caught fire and burned to the ground. The Shrewsbury Volunteer Fire Dept. responded along with the help of eight other fire departments, and struggled to keep the fire contained as embers were falling upon nearby homes. There were no injuries. Today the land stands silent with some brave daffodils poking their heads up through the soil.

In Memoriam

Alan Ridlon, Sr., Life Member, served as President of the Society in 2004, and also six terms as Trustee, passed away on May 1, 2023, at 85 years of age. Al's commitment to two fire departments is legendary. He also donated fire extinguishers to the Museum and taught members how to use them. He helped run fund raising efforts i.e. sitting at a table in the wind and rain, taking care of monies received or placing a huge wagon outside the Community Center to feature home grown pumpkins and flowers donated by members at the Quilt Show years ago. Al's stewardship of the Society was much appreciated by members and friends. Rest in peace, Al.

Addendum

More information re: 1903 fire can be found in the town's history book by Dawn Hance, entitled "Shrewsbury, Vermont - Our Town As It Was." The book's price: \$20.00. It is available at:

The Shrewsbury Historical Society Museum
which

will open for the season on
July 2 from 1pm to 3pm.

~ Submitted by Ruth Winkler



PVF Services LLC

Excavation, Trucking, driveway repair, site prep, building removal, brush grinding and much more!

Neal and Chad

1368 Lincoln Hill

Cell 802 236 8105

Shrewsbury Vt, 05738

Office 802 492 3364

sharrowmaple@gmail.com



THE NEW LEARNING PROJECT

CHOOSING TO EXPERIENCE OUR POTENTIAL

MUSIC LESSONS -- Guitar, Piano, and more
RED CROSS COURSES -- First Aid, CPR, Lifeguarding
SWIMMING INSTRUCTION
(More services at website)

STUDIO IN CUTTINGSVILLE VT
www.TheNewLearningProject.com
TheNewLearningProject@gmail.com
802.492.3208

Marcos Levy
Instructor with over 30 years
of Experience

In 1855, Franklin Smith, an elected Shrewsbury constable, after written complaint from three Shrewsbury voters, and with a court warrant in hand, proceeded "to search the dwelling house of the Plaintiff (Russell H. Lincoln), for intoxicating liquors, entered the same, accompanied with the other defendants, as his assistants, and made search, and having found in the house one barrel of rum and eight barrels of cider, took the same and carried them away". The complaint stated, "that they had reason to believe and did believe, that intoxicating liquors were kept, or deposited in the dwelling house of Russell H. Lincoln, of Shrewsbury.....and intended for sale....and against the peace and dignity of the State". Lincoln sued, claiming the seizure was unjustified based on many of the precepts in the US Constitution. The cider was returned (more on that later) and the case went all the way to the Vermont Supreme Court. A printing of the 27 page Opinion of the Court was entitled "The Vermont Liquor Law Sustained".



So, the obvious questions are: Why did this happen? What "statute"? What was "The Vermont Liquor Law"?

In the country's early years, the drinking of alcohol was a regular part of everyday life. The Mayflower carried 42 tons of beer and 10,000 gallons of wine (in contrast to just 14 tons of water). In 1767, it is reported that the average New England family consumed 7 barrels of hard cider annually, approximately 35 gallons per person. By the 1820's, the average consumption of spirits is estimated at 7 gallons per person per year. By 1820, there were over 200 distilleries in Vermont making a variety of spirits, gin being the greatest in volume. Drinking water was often contaminated and beer was often a staple at meals. Beer and cider kept laborers hydrated at work.

However, the effect of so much alcohol consumption on family and societal stability became a public issue. Early on, John Adams noted in his diary that "Taverns were becoming the eternal haunt of loose, disorderly people". Later, a pamphlet by the Society of Friends advised against any drink "which is liable to steal away a man's senses and render him foolish, irascible, uncontrollable and dangerous". Another period writer noted "Labourers drink Rum like Fountain-Water". Thus began the Temperance Movement and it was very strong in Vermont.

By the 1830's many Vermont towns were petitioning the Legislature to prohibit the sale and production of liquor. The Vermont Sons of Temperance stated in their 1852, ..." let us unite our forces and make a bold push for the entire suppression of the traffic in intoxicating liquors as a beverage". The Woman's Temperance Association and the Woman's Christian Temperance Union followed suit. A petition from Shoreham women stated, "if such spirit-selling taverns are continued among us, is it not as certain that the peace and happiness of families will be destroyed, the usefulness of many of our husbands, brothers and sons greatly impaired?".

In 1847, the regulation of liquor began in Vermont. The State put the licensing of innkeepers and retailers of liquor to a county-by-county vote. Only Essex County voted for licensing, making the rest of the State "no license" or legally "dry". The following year most counties voted "to license" and the liquor legally flowed, only to be reversed in 1849 and 1850 with all counties voting to be "dry". Shrewsbury voted "for licensing" by a 79 to 39 vote in 1850, hoping to keep the taverns open. However, later that year, the Legislature passed Act 30, which banned the licensing of selling alcohol as a beverage and the entire State became effectively "dry". Thus began Vermont's prohibition, which lasted 83 years until the end of Federal prohibition in 1933.

Then, in November of 1852, the Legislature took a giant step and passed "An Act To Prevent Traffic In Intoxicating Liquors For The Purpose Of Drinking", otherwise known as The Vermont Liquor Law,

RUM SEIZED! LINCOLN SUES TOWN OF SHREWSBURY

which nailed Mr. Lincoln. Section 1 of this bill reads as follows: "No person shall be allowed to, at any time or place within this state, except as herein provided, manufacture, sell, furnish or give away, by himself, his clerk, servant or agent, any spirituous or intoxicating liquor, or mixed liquor, of which a part is spirituous or intoxicating.: But liquor could be sold by towns. The Act allowed the county to annually appoint a suitable person as the agent of a town and allow that agent "to purchase, at the expense of the town,... and to sell ... intoxicating liquor, to be used for medicinal, chemical, and mechanical purposes only; ...".

So, back to Shrewsbury. In March of 1852, one year before the new law came into effect, the Shrewsbury Selectmen issued the following: "To all persons whom these presents shall concern Be it known that Jeremiah Dow is hereby Licensed by the Select Men within and for the Town of Shrewsbury and is authorized to sell wine, Rum, Brandy and other spirituous liquors for medicinal chemical and mechanical purposes only at the dwelling house or Inn occupied by Wm C Dow in the Town of Shrewsbury." The previous year, Jeremiah and William C Dow were granted a liquor license "to keep Inn or Publick House or house of entertainment.." Apparently, these authorizations danced around the pending and recent legislative acts. Although the State banned the licensing of taverns that sold alcohol as a "beverage" in 1850, the Town licensed Dow to sell liquor for "medicinal, chemical and mechanical purposes" at his house or inn during subsequent years.

Jeremiah Dow owned the Union House tavern in Cuttingsville. How or if Dow, as a tavern owner, limited his liquor sales to just medicinal, chemical or mechanical purposes, we will never know. The bar should have been closed for sure under the new Liquor Law. But there were several "loopholes" in the law. An individual could legally possess their own liquor and if he mixed it with a non-alcoholic purchased at a tavern, the tavern owner was not liable. Also, a club could serve liquor, as the members were considered drinking their own personal liquor.

The term "giving away" in the original law was quickly clarified to exclude serving liquor in one's dwelling. The law also exempted from regulation unfermented cider and the manufacture of fermented liquors for one's own use. This may be why Russell Lincoln's cider was returned to him.

In the 1861 Town Report, the Town had \$300 of liquor on hand, purchased \$100.33 more and sold \$269.44 (presumably for medicinal, chemical or mechanical purposes). The appointed liquor agent was paid \$37.50. Now back to Mr. Lincoln. Russell Lincoln owned Lincoln's Tavern at the bottom of Lincoln Hill Road, on the right just after you exit present Rt 103. Russell Lincoln's dwelling, where the raid took place, was in Cuttingsville, just north of the Union House tavern.

Mr. Lincoln apparently didn't always follow the law, as he was fined in 1848 for selling "one quart each of rum, gin, brandy and 29 other counts of selling spirits without a license. Perhaps it was no surprise that in 1855, he was accused of selling liquor and his house was raided. The Supreme Court's long decision addresses the subject of arguments made by Lincoln, such as: the legal powers of the State; the Bill of Rights' protection of property, enjoyment of life and liberty; unreasonable search and seizure and the legality of the Liquor law.

The 1852 Vermont Liquor Law was amended several times and then repealed in 1903, after which the State again licensed taverns and saloons. But in 1915, the Legislature passed another broad prohibition law. Then, in 1919, Federal prohibition was enacted, and Vermont continued to be "dry" with the rest of the country (during which a lot of Vermonters figured out how to make a lot of money with the "demon rum"). The taverns opened again, once and for all, on December 5, 1933 with Congress passing the 18th amendment to the Constitution. So, think about this bit of Shrewsbury history when sitting at the bar at the Rustic Rooster or running quickly into Pierce's Store for a 6-pack.

~Article by Mark Youngstrom

The Shrewsbury Community Church



Compiled by Sue Ransom-Kelley



We've been very busy at the Shrewsbury Community Church! The kids made wind chimes, planted beautiful flower baskets for their moms and pansies in teacups for all the ladies in church on Mother's Day! We hosted a very successful and delicious dinner for over 30 people to raise money for the Helping Hand Fund.

The Shrewsbury Prayer Shawl Group will meet on Tuesday June 27th at noon upstairs @ the Shrewsbury Meeting House. All are welcome to attend! Dessert, coffee, and tea will be served. Bring a bag lunch if you would like to. If you don't know how to knit or crochet, we will teach you! Questions call Roxanne 802-492-3675 or Sue 802-779-4825

Special Thanks! We were blessed to receive a generous anonymous donation to our Shrewsbury Community Food Shelf Account at Pierces Store! This Donation has allowed us to add fresh items to our food shelf refrigerator such as cheese, eggs and butter. We are thankful to be able to provide this food to those in need in our community.

All are welcome to join us any Sunday at 10:30am at the center church which is on the second floor of the Shrewsbury Meeting House. Come and enjoy the beautiful music, hear an uplifting message from our Pastor, and visit with your neighbors. Refreshments served after the service. There is also a Fun Day Program for kids!

Shrewsbury Community Church Calendar

- Sunday, May 28, 10:30am Fun Day Program for kids. Worship Service
- Sunday, June 4, 10:30am Fun Day Program for kids. Worship Service.
- Sunday, June 11, 10:30am Fun Day Program for kids. Worship Service led by Donna Smith.
- Sunday, June 18, 10:30 am Fun Day Program for kids. Worship Service
- Sunday, June 25, 10:30am Fun Day Program for kids. Worship Service
- Tuesday, June 27, 12:00pm Prayer Shawl Group at the Meeting House

Community Food Shelf

Free Community Food Shelf at the Library in the front entry way. Those in need are welcome to help themselves any time the Library entryway is open. Limited hours are: Mon 10am-12noon; Tues 7-9pm; Wed 10am-5pm and 7-9pm; Thurs 7-9pm; Fri 10am-12noon; and, Sat 10am-12noon.

We have our additional Summer Food Shelf on the side porch at Pierces Store in North Shrewsbury. Those in need are welcome to help themselves.

Food Delivery and Assistance If you are unable to get to the Food Shelf at the library in Shrewsbury, we will deliver groceries to you. If you need items which are not available on the shelf we can provide grocery gift cards. Call Karen at 802-558-5991 or Sue at 802-779-4825 or 802-492-3738.

Community Needs

- Wedding, Funeral or Memorial Service Requests: Contact Donna Smith 802-492-3367; or Sue Kelley 802-492-3738, 802-779-4825
- Community Helping Hand Requests: Contact Donna Smith 802-492-3367; Sue Kelley 802-779-4825, 802-492-3738; or Karen Lorentz 802-558-5991. Shrewsbury residents experiencing financial hardship. Assistance can be given for basic needs (food, heating, gasoline, etc). If you or a neighbor are in need, please let us know!
- Pastoral Care, Home, Hospital Visitation, Outreach Requests: Contact Roxanne Ramah 802-492-3675 or Ruth Kinne 802- 775-5318.

Stewart Maple Marketplace

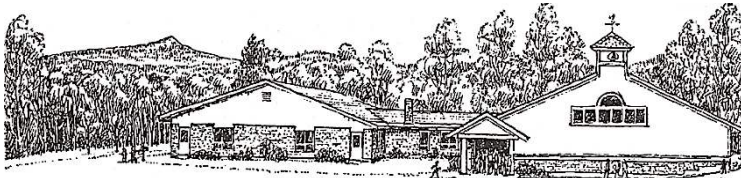
Shop to support your local business community
Maple Products - Specialty Foods - Artisan Gifts
made by Vermonters.

**Open Hours : Thursday-Saturday 11am-5pm
Sunday 11am-4pm**

5444 VT ROUTE 103 SHREWSBURY VT 05738

www.stewartmaple.com

Shop online and have it shipped or pick-up curbside



SHREWSBURY MOUNTAIN SCHOOL

Our students are enjoying the sunny weather! They are observing the leaves growing on the trees, listening to the birds singing, and watching our orchard trees thriving. We are getting tons of learning time in our outdoor classrooms and with our Four Winds volunteers. Classrooms are planting seedlings to be transplanted into our school garden and we love seeing everything growing and blooming on our campus!

If you would like to volunteer to help with weeding our school garden, please contact me at the school. We are hoping to have a beautiful harvest this Fall!

Important Dates:

5/26: 6th grade Step Up Field Trip to MRU
 6/9: Field Day - thank you, PTO volunteers!
 6/12: Graduation and Music Concert at 6:30pm
 6/14: PreK Celebration at 11am
 6/15: 6th Grade Class Celebration Field Trip
 6/16: Last day of school - HALF DAY!

Our amazing PTO sponsored a Swing into Spring Family Dance at our school on Friday, April 28th! We were so excited to have DJ Brett join us and have some FUN!



We are starting to make all of the preparations for our end of the school year activities. I am very grateful for our dedicated team of staff members, the support of our families and community, and the joy of learning our amazing students demonstrate each day!

I wish to extend my gratitude to our 2023 graduating 6th grade students! These students are my first class of graduates at SMS and I am very thankful for their warm welcome to the SMS learning community. These students have demonstrated strong character and leadership as they have mentored our younger students. I know they will challenge themselves and achieve their academic goals as they continue their next chapter in their education journey at Mill River Union High School.

~Kristin Cimonetti, 802-786-3995
kcimonetti@millriverschools.org

Join us at the Shrewsbury Library



Thursday
 June 15th
 6 to 7pm

Everyone welcome!
 Let's kick off the summer



Nothing beats Local
 Small Farm Flavor &
 Quality, so throw a
 cooler in your car and
 stop by for a bit of our

VT Maple Syrup & Maple Products

Our bottled VT Maple Syrup, Candies,
 Spreads, Sugars, & Sauces

Grassfed Beef

Steaks, Burger, Sausages, Ribs & Roasts

Local Pork

Chops, Country Ribs, Gound, Sausage,
 Smoked Bacon, Smoked Ham Steaks

Shop our Farm Store

2450 Lincoln Hill | Shrewsbury VT

10am - 5pm - Sat, Sun, Mon, Wed Thurs.

10am - 3pm - Fri

4pm - 7pm - Fri @ Ludlow Farmers Market

53 Main St | Ludlow, VT

802-492-2151 SmithMapleCrestFarm.com



Fun Educational Day!

"The birdsong walk was terrific! The venue was incredible. Big meadows, streams, mature trees, woodland. If I were a bird, this is where I'd choose to live! I enjoyed the information about the various apps that make it so easy and enjoyable to identify birds. Of the 27 species that we saw or heard, there were two species that were new to me: Chestnut-sided warbler and the oven bird. I was grateful for Linda and Connie for sharing their wealth with us. Gratitude also to our generous host. I especially liked the emphasis on fun but also the scientific importance of this gentle activity. —comments from bird walker Marilyn Dalick.

The SCC feels so fortunate to have Linda Shelvey and Connie Youngstrom as members! They are incredible naturalists and birders and a walk with them is always enlightening. Add in the managed landscape of Tim Stout's Jockey Hill Farm and warm sunshine and it was a perfect event. Here are some key pieces of information for those who were not able to be there.



Identifying birds can be tricky! So often birds are hard to see therefore becoming familiar with their calls is often the first clue as to who they are. I just can't seem to remember sounds so I found the recommended **Merlin Bird ID** free app to be indispensable. You can easily record the call that you hear and it will help you ID it that way. If you are able to see it, (good binoculars are worth the price here), Merlin also quickly helps you further refine the identification by looking at the bird's size and shape, its main colors, its

behavior and habitat, and try to note field marks like an eye stripe or wing bars. You can keep a list of your birds and it connects to **eBird Mobile** which helps you keep a checklist of birds seen. Your checklist goes to a worldwide data base managed by the Cornell Lab of Ornithology so by using it, you are not only identifying birds but are being a Citizen Scientist and contributing to conservation research! Linda also prepared a list of phonetic clues and mnemonics to help us remember songs and calls, for example, pewees say "peewee", phoebes say "phoebe" and most of us know the barred owl who seems to say "who cooks for you". If you'd like a copy of her handout and list of mnemonics, contact Linda Lpurdyshe@gmail.com

"We put our new-found skills to work the very next day and were able to identify a Blue-Headed Vireo, a Black-throated Blue Warbler, and a Black-throated Green Warbler on our own for the first time! As exciting as this was, we also learned important information about what the natural habitat must contain in order for these and other songbirds to thrive in Shrewsbury. We heard how damaging the removal of native plants in the understory can be to bird populations, which caused us to think about what we can do on our property to ensure trees, native plants, pollinators and birds are supported."

Submitted by Michelle Greene

Spotlight on Invasive Honeysuckle

The Shrewsbury Conservation Commission (SCC) this year is putting the spotlight on Invasive Honey suckle. Native to Asia, it was planted historically on many a homestead as an ornamental landscape shrub. Although the flowers can smell sweet and it is visited by bees, it should grow only in Asia where it co-evolved with insects and diseases that keep it in check. Easily escaping our yards, it outcompetes native plants by leafing out early, sprouting from spreading roots, and vigorous growth is unimpeded by munching or malady. In the woods, dense thickets shade out other plants. Pollinators that visit are just helping to create more honeysuckle! They, and we, should be attending to our lovely native flowering shrubs.



Viburnums, dogwoods and elderberries are some of the beauties that grace our woodlands and roadsides. They are important for the caterpillars and other insects that feed upon them, which in turn feed our baby birds or hatch out into the beautiful butterflies and moths that we love to see. These and other native shrubs will grow well in or around your yard. That honeysuckle on your property may not seem invasive, just standing by itself, growing bigger every year. However, birds will eat the attractive but not very nutritious fruits, then drop the seeds far from the bush. That is how more bushes appear down the road, in the forest, on your neighbor's property.

Happily, there are native honeysuckles to be had: Diervilla or Northern Bush Honeysuckle, a 2-4' bush with yellow flowers and seasonally colorful foliage; Coral or Trumpet Honeysuckle, a 4-15' vine with orange or scarlet flowers that bees and hummingbirds adore; American Honeysuckle, a small to medium shrub that grows wild in the dappled sunlight of forest edges. It offers soft leaves and pairs of bell-shaped yellow flowers, then red fruit. It's sometimes "scraggly" but often petite and charming.



I hope this article awakens some folks to the thuggish invader that might lurk in your yard! Removal of this shrub has begun along one or two roads in town, as time has allowed. Just to give you a sense of its invasiveness, 340 bushes of varying size have been pulled from a stretch of road just 1 mile in length! If I should come to you seeking permission to remove some from your property, please say yes! Or better yet, determine to do the deed yourself! I am always glad to advise and/ or help.

Submitted by Pam Darrow



Pull It Up!

Have you seen this nice "flower"? It's garlic mustard; a tenacious and fast spreading invasive that affects plant and animal life. Please go to vtinvasives.org for more information and ways to control it.



Spring Lake Ranch therapeutic community

The snow is gone. The fiddleheads and ramps have been harvested. Mud season is wrapping up. That can only mean one thing—summer is on its way! While our community at Spring Lake Ranch works and plays outside year-round, warmer weather brings with it some of our favorite recreational activities. It is a special time up here!



Perhaps our most beloved summer recreation is Ranch Ball, a version of softball where everyone gets to bat, everyone gets to run, everyone gets to play, most of us play barefoot, and it is impossible to strike out. Friendly competition is great, but we find that inclusion—celebrating our big hits and laughing together when we miss the ball—is a powerful way to build self-esteem and have fun! Former residents and staff who know the game always speak fondly of it, and it is a joy to teach to new community members each summer. Our ball field doubles as a cow pasture later in the season, so we make sure to get our games in before then.

As soon as it is warm enough, we open our private lakefront and dock, a little way down from the Shrewsbury Outing Club's dock on Spring Lake. In addition to swimming, we enjoy many lakefront campfires and ice cream parties to get us through those hot summer days after work crew is done. Those of you who know the lake might enjoy listening, as we do, to the mated pair of loons that return each year. Their unique calls are a summer soundtrack we cherish.

Throughout the summer months, we take advantage of all the outdoor opportunities Vermont has to offer. Once a year, the entire community takes a trip to Camp Plymouth State Park to spend the day swimming and canoeing on Echo Lake. The outing is complete with a BBQ lunch (thanks to our spectacular kitchen staff!) and an all-day volleyball tournament.

Summer is also a great time for camping trips. We go backpacking in the mountains and organize a canoe-camping trip on the Connecticut River. Interested residents canoe up to fifteen miles per day and set up camp a little farther along each night. For those who choose to attend, it is a great chance to get to know each other better, practice outdoor skills, immerse ourselves in nature, and catch up on bird watching!

A big part of our mission at Spring Lake Ranch is to nourish the relationships our community members have with the land. Summer at the Ranch is the perfect time to engage with the outdoors and find new ways to appreciate the natural world.

~Article by Amarya Weinberger and Anna Sutton



25 Years of Swim Lessons

Marcos Levy is retiring after teaching swimming lessons for 25 years at Spring Lake! Above, Marcos and Mason Sharrow getting into the "swim" of things during lessons at Spring Lake.

Photo by Angie Sharrow

Isn't it your time to Thrive?
Celebrating 23 Years!

Thrive Center
OF THE GREEN MOUNTAINS

Chiropractic Care • Therapeutic Massage
Holistic Health Education
Stress Reduction Products
Nutritional Supplements • Coaching

802-446-2499

68 South Main Street • Wallingford

uthrive@vermontel.net • thriveinvermont.com



Hi Folks!

Nancy West had a couple visitors yesterday (may 18, 2023), and one of them was on the porch! Photo by Nancy West



Shrewsbury Conservation Commission Trail Camera Picture of the month

A beaver pond is a great location for a trail camera! I'm very happy to be getting more moose captures this spring after their absence for several years. They look healthy.



The bear family is digging into a beaver lodge, hoping to find baby beaver kits.



I located a ruffed grouse drumming log. The picture shows the bird's extended wings. The grouse captures air underneath the wings in a speedy blur causing the drumming sound! Have you ever wondered who was running a motor in the deep woods? Now you know the answer!



If you have a picture or track to share email Linda Shelvey Lpurdyshe@gmail.com ~Submitted by Linda Shelvey

The Shrewsbury Singers Sing Again!

When?

Sunday Mornings, 9:00AM – 10:30AM
~May, June, July~
May 7, 14, 21, 28
June 4, 11, 18, 25
July 2, 9, 16, 23, 30

Where?

The Russellville Schoolhouse
18 Crown Point Road
Shrewsbury, VT 05738

What Songs?

Songs sung in harmony from across the globe
and spanning centuries.

Who?

Teens – Adults who love to sing!
All levels of experience are welcome.

FOR MORE INFORMATION:

Licia Gambino ~ (802) [492-3792](tel:492-3792)
hamgam@vermontel.net

MONTHLY CRAFT NIGHT AT WALLY'S CORNER

UPCOMING EVENTS

May 27, 2023	Monthly Craft Night: Build a Self Sustaining Terrarium
June 24, 2023	Monthly Craft Night: Lilac Honey Infusion
July 22, 2023	Monthly Craft Night: Succulent Pots
August 12, 2023	Monthly Craft Night: Drying Flowers Using Silica Gel
September 9, 2023	Monthly Craft Night: Spa in the Garden

Details can be found on Facebook
under "Wally's Corner Events".
Generally each event is 4pm-
5:30pm @ Wally's Corner Store

All events have Prizes, Giveaways, and Discounts Store Wide
with Private Shopping!

Wally's Corner 5304 VT Route 103 Cuttingsville, VT 05738

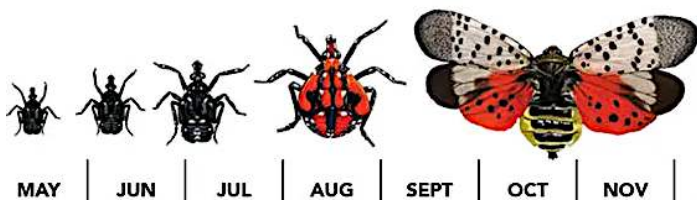
Stomp that bug!

Each year about this time I hear a question from my partner:
"Do you know what I hate about this time of year?"
And I always know what the answer is:
"BUGS!"



There's the dreaded black fly, mosquitoes, ticks, hornets, stink bugs, lady bugs....the list seems endless. AND, there's a relatively new one to add to the list: Spotted Lantern Fly known as SLF. It's a beautiful invasive bug but can be deadly to vineyards, nurseries, and the logging industry. The adult fly is ~1" long and 1/2" wide of red, black, and yellow.

First discovered in the U.S. in 2014 in eastern Pennsylvania it has spread to 14 states mainly in the northeast....but NOT Vermont....yet! It can survive in every state except North Dakota.



Be on the lookout for the egg masses, the beetle, and the bug! The SLF begins to hatch as the weather gets warmer, so the VT Agency of Agriculture asks that during the spring landscaping season look for egg masses which might accidentally be brought in on shipments of nursery stock from other states. The egg masses are about 1 1/2" long, flat, and gray in color. At the end of May or the start of June look for small black nymphs marked with white dots. If grapes or tree-of-heaven are in the area, they will migrate to those plants.

If you see SLF, its egg mass or nymph, take a photo of it and report it to <https://vtinvasives.org/reporting-spotted-lanternfly>. Then stomp on that SLF and scrape off that egg mass so that 30-to-50 new SLF's nymphs won't hatch!

An adult SLF looks like a moth but doesn't actually fly. It hitchhikes! It hops from place to place and is mainly transported by people. They feed on more than 70 types of plants including grapes. The alluring beauty of the bug makes it a shame to stomp on it, but it's a demon in disguise!....so just do it!

~Article by Chryl Martin



Black Flies

Mother's Day to Father's Day



Lady Slippers in Mid-June

Last year there were "tons" of Lady Slippers in the woods around June 18. Wonder what this year will bring?

Photo by Lavinia Seide

RIVERWOOD LAWN CARE, LLC

Fully Insured

Patrick Angstadt
802.770.0433

riverwoodlawn care@gmail.com

Mowing, Trimming
Spring and Fall Cleanups

FREE ESTIMATES



June 18, 2023

The Birds Are Back



the same day—May 9!

She loves to watch the barn swallows after babies leave the nest. One year she saw three chicks lined up on the electrical wire, and the parents would fly by, put the food in the chick's beaks, and swoosh...they'd be gone!



She has also enjoyed watching the cliff swallows use the blue bird house. They fly around on the meadow collecting bugs...then swoop into the small blue bird hole at top speed! But they haven't left any beak marks on the back side!

This year there are more different birds on her feeder... cowbirds (never had them before), red winged black birds, grackals, crows, hawks (all the other birds just freeze on the feeder when it's around), and starlings galore.

~Bird report from Julianne Sharrow



Green Up Day!

Not all was about trash on Green Up Day. Andrea won the raffle participation prize of a cheese cake made by Michelle; Todd, Pam, and Linda worked together sorting "collections;" Chris and Julia celebrated a full bag; and, there were Trout Lilies and Trillium along the roadsides to admire. Photos by Julia, Martin & Chryl

I Love You

I love you
I truly do
I love you and you
and you and you too
I love humanity
I love my place in this world
I love you if you're a boy or a girl
Or even if not sure, still yet to be unfurled
I love every single person I've ever met
Even those I've NOT learned to like just quite yet
I love the malevolent who spread so much hate
Because deep inside them there is something great
I love that person who always disagrees
As there's always a place we'll find harmony
I love the jerk who loves flipping me off
For I will care for him if he develops the cough
I love when we're quarantined, then back together
I love sharing the love during inclement weather
I love you when we should be socially isolating
I love you on the dance floor ridiculously gyrating
I love the lady whether she's a giver or not
I will still share with her, what she needs that I've got
I love the innocent immigrants who are seeking
Our lives that they envision we always have peaking
I love the people who pay no one heed
Regardless of what the other ones need
I love the goodness that so many do share
Try loving likewise go ahead on THIS dare:
I triple-dog dare you to love every human
And when you do, see what it'll do man
I love that your spirits will fly higher than high
I love that new gleam you now have in your eye
I love that you'll see things with a fresh point of view
From such a simple thing as You loving you
I love that you now love as much as you're able
By inviting the hungry to eat at your table
I love that you now see things from this new introspection
Imagine the good coming from this new love direction
I love loving love and you now loving it too
I love seeing all the good that Your love can do
I love that there is never enough love all around
For that means there's that much more love to abound
If love is something to which you'd like to connect
Just jump right on in, it can't hurt, what the heck
I love knowing that love is ever so pure
I love how it helps with each struggle we endure
I love how love goes from puppy to fully committed
If I am charged, I plead guilty, not acquitted
I love most every being, here on this Earth
We are all Earthlings designated by birth
I love that this is love in our time
I love that this loving is superbly sublime
I love all true love, and deep love I in fact admire
It's this kind of love toward which we all must aspire
I love that there is never too much love to be giving
For without all our loving we'd have no place for living
For all who love someone that you are not with
Let them know that you love them immediately forthwith

Poem by Thomas Hartigan. (© #THartigan)

Town Administrative Assistant

The Shrewsbury Selectboard is looking for a Town Administrative Assistant who will:

- Attend all Selectboard meetings, take minutes, and follow up on Selectboard business.
- Maintain Selectboard files in coordination with the Town Clerk, Treasurer, and other Town Staff.
- Maintain and enhance the Town's website.
- Assist the Road Commissioner with grant applications.

Part-time \$19.00/hour

A more detailed description is available.

If interested, please contact:

Aaron Korzun 492-3362
dockorzun@vermontel.net

Shrewsbury Meetinghouse Outdoor Concerts

(Concerts for June elsewhere in this issue)

JUN 30	SATYRDAGG	JUL 2
JUL 14	LUMINOUS CRUSH	JUL 16
JUL 28	MOOSE CROSSING	JUL 30
AUG 18	PANHANDLERS	AUG 20
SEP 1	SPINTUITION	RAIN OR SHINE Concert will be Inside if raining

Find us on Facebook for more info

COMING AUGUST 25th

The Lepidoptera Hour
Fashioned after The Moth
Whether a woman of power
Or a man of the cloth
Each one of us
Has a story inside
Let's discuss
Share our pride
In August we'll share
At Pierce's store
Stories with care –
Stay tuned for more

~Thomas Hartigan

Pierce's Store Beer Tasting



**Featuring
Mount Holly
Brewing Company**



**May 26, 2023
5:00PM until 7:00PM**

**We will be selling fresh-made delicious Mexican fare from
Victoria's Authentic Mexican Food Catering
~Enchiladas - Rice and Beans - Chips with Salsa~
Bring your appetite!**

**At Pierce's Store
2658 Northam Road
Shrewsbury, Vermont
802-492-3326**

**Pierce's Store will be selling soft drinks and non-alcoholic beverages as well
The store will be open during the event**

This event is a fund-raiser for the Shrewsbury Co-Op at Pierce's Store

WIRENUTS ELECTRICAL LLC

bbates@vermontel.net

**REBECCA BATES
LICENSED
ELECTRICIAN
802-492-3406
802-353-4376**



SAGE and the Shrewsbury Library hosted poet Sarah Audsley for a reading and conversation on May 19. Joan Aleshire and Sarah discussed Sarah's process for writing her debut poetry collection "Landlock X" published by Texas Review Press. If you didn't make the reading, you can find videos from the conversation on our SAGE YouTube channel!

The Mountain School Garden beds look in prime condition after last fall's cover cropping and this spring's yellow dock pulling. (Did you know that yellow dock has many medicinal uses and the seeds can be viable for 80 years?) Many plant starts from Alchemy Gardens will be planted in early June! SAGE and SMS will be calling for volunteer help to keep the garden thriving this summer. Please contact us if you are interested in pitching in.

Finally, we would like to welcome our newest SAGE board member, Olivia Mancivalano. Olivia has been back in Shrewsbury for the past three years, working as assistant farm manager at Spring Lake Ranch. Olivia brings experience and interest in foraging, arts, music, farming, gardening, and animals to our board and we're excited to work with her!

SAGE, Shrewsbury Agricultural Education & Arts Foundation, began in 2012 as a non-profit organization to promote traditional and innovative agriculture. We added support for the arts to our mission in 2020. We sponsor workshops, concerts, spoken word readings, and more in the Russellville Schoolhouse. For more information about SAGE: contact Stephen Abatiell at educate.sage@gmail.com, Joan Aleshire at 492-3550 or visit www.sagevt.wordpress.com. Follow us on Facebook for up-to-date event details at ShrewsburySAGE and find our sustainability and arts videos at www.youtube.com/@sagefoundation.

Submitted by Steve Abatiell



SNO-BIRD NEWS

The Sno-Birds had their last regular meeting for this season on May 9. It was election of officers and all officers got reelected. Mike Stewart is President, Roy Arthur is VP, Mike Gabriele is Treas. and Michele Taub is Sec. The board of directors are Dave Fucci, Bill Lohsen, Scott Ballard and Scott Ryan. The appointed position of Trails Coordinator is Roy Arthur.

We discussed the overall grooming for the season and we did about 75% of our contract money this year. For a bad start to the season, we did pretty good in the end. All of our signs are picked up and stored so they stay safe for the summer. Several members helped with this. We are still looking into a fund raiser for this year, if any one has any thoughts on this reach out to any of the officers with your idea. The first part of spring and summer is kind of quiet for the club, just some paperwork to fill out for VAST, but later in the summer we will start more trail work and groomer maintenance. You can follow us on face book for any summer updates. We hope everyone has a great summer. ~Submitted by Roy Arthur

REINBOW RIDING CENTER NEWS

It's official. Rainbow Riding Center in Belmont is open and welcoming riders from schools all over Rutland County (including Shrewsbury and Mt. Holly), Ludlow, Cavendish and Springfield too. But you don't have to be a student, everyone is welcome to apply wherever they are from. And it's not limited to just riders. Therapeutic Horsemanship comes in many forms and if you just want to come for lessons in groundwork, grooming or just plain being in the presence of these wonderful, empathetic animals, give us a call and let's talk.

We're still looking for day lilies, so if you have extras you want



to get rid of, please think of us and drop them off on the side hill below the ring at Stone Wall Farm/Reinbow Riding Center, Tarbelville Road, Belmont. Thank you.

For more information, please visit our new website: rainbowridingcenter.org and follow us on Facebook or Instagram @rainbow_riding_center. Contact us at programs@rainbowridingcenter.org or 802-236-2483 to inquire about our programs and lessons. For information about opportunities to volunteer with us contact janetupton@rainbowridingcenter.org.

Submitted by Janet Upton



Spring chicken steps out
Seventeen trips round the sun
Steady at the wheel
Haiku & Photo by Galen Miller



New to Market

215 Parker Road, East Wallingford

Offered at \$389,000



126 Main Street, Ludlow, VT 05149 +1 802-975-0338

okemo.evrealstate.com

©2023 Engel & Völkers. All rights reserved. Each brokerage independently owned and operated. Engel & Völkers and its independent License Partners are Equal Opportunity Employers and fully support the principles of the Fair Housing Act.

SHREWSBURY MEETINGHOUSE OUTDOOR CONCERT SERIES

Your free will donation is appreciated to support the musicians and the Meetinghouse. For more info, or to join our email list for updates, contact Vicky Arthur at 802 492 3649 or email singtolive57@gmail.com



**FRIDAY, JUNE 16 @ 5PM
"FAUX PAWS"**

**Food provided by Marble Valley Kitchen
and 802 ice cream pops sold by Pierce's store.!**

From raging fiddle tunes to saxophone solos, the music of The Faux Paws would be hard to pin down with standard genre descriptions. The trio's contagious groove, and feel-good melting pot folk music has been honed over ten years of playing together, and is the sound of three close friends who feel a musical kinship that transcends any stylistic limitations.

Rain Location: inside the Meetinghouse



**FRIDAY, JUNE 30 @ 5PM
"SATYRDAGG"**

**Food provided by Gamebird of Ludlow
and 802 ice cream pops sold by Pierce's store.!**

Bassist, singer and composer Mowgli Giannitti - who has performed on the stages of Carnegie Hall, Higher Ground, and many more - fronts this all-star lineup of players in a set of original music. Backed by powerful vocals, drums, keys, guitar and horns, this sound pairs the rhythms of New Orleans, Brazil, Turkey, Funk and more with the lush harmonies of jazz and modern classical music.

4th Year! Shrewsbury Meeting House Concert Series

The Shrewsbury Meeting House Concert series is back for a fourth year. The 2023 series begins Friday, June 16 at 5pm outside the Shrewsbury, VT Meetinghouse. Concerts are now on Friday evenings at 5pm. Join us, bring your friends, family, picnics, and have lots of fun. We have a food truck on site and 802 ice cream pops sold by Pierce's store.!

We again have the need for a **CSM** (Community Supported Music). Our audience is our only source of financial support. We have no business sponsors.

CSM: You pay up front before the Shrewsbury Meeting House Concert Series begins, and enjoy up to six concerts this season. Think about an amount you might give for a concert and then multiply that times the number of concerts you might attend. We estimate that it will cost about \$5,000. Having funds up front puts us in a more secure position to pay musicians as we get the concert series rolling. Want to get started with your CSM? Make a payment by check sent to the address below, or through Venmo by searching for Victoria Arthur @skyranch. Checks may be made out to Vicky Arthur, and sent to: Vicky Arthur and Paul Sgalia, 1993 Lincoln Hill Rd, Shrewsbury, VT. 05738 he Contribution Bucket will also I be there!

Regardless of your ability or desire to contribute we want you to attend. It's important that Everyone gets to have the joyous experience of live music here in Shrewsbury. Have questions, or know someone who would like to join our concert news email group? Contact Vicky Arthur at singtolive57@gmail.com or call Paul Sgalia at 802 492-3649

Vicky Arthur and Paul Sgalia

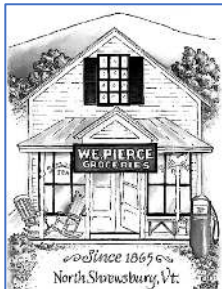
◆ Handmade and Local Goods

◆ Artisanal Foods

◆ Gardening and Home Decor

◆ Antiques, Toys, and More!

5304 VT Route 103, Cuttingsville, VT 05738
Hours: Wednesday-Sunday 11am-6pm
www.wallysvt.com
hello@wallysvt.com
 (516) 522-4174



NEWS FROM PIERCE'S STORE 802-492-3326

Bob Knudsen, Manager

Greetings to all from Sally. I agreed to write the June column from the store while Bob's changing diapers. We wish him, Hallie and little Ellis good and happy times.

=====

While Bob is out, the regular staff is holding the fort: placing and receiving orders, answering your questions by phone or email, and staffing the store for all the normal hours.

Pierce's Store website being updated New Board member Ed Sawyer is updating our Pierce's Store website at www.piercesstore.com. It is a work in progress at this point but Ed has put a calendar of upcoming events so you can put them onto your own calendar now. Other tabs will be updated as time permits. And I believe that Ed will generally add the "daily" messages to the site as well. If you have suggestions of things you'd like to see on the website please drop a note to the Store at pierces.store@gmail.com.

Breakfast Sandwiches

and

Sandwiches Made to Order!

Volunteer Joni regularly makes breakfast sandwiches on Tuesdays and Fridays. These treats are cheese/egg on English muffin that can be warmed quickly in the microwave or eaten as is. Joni also is our primary sandwich maker, though if the supply in the cooler is getting low, other volunteers are trained in the process.

Specific Item Requests: If you are looking for a specific product, ***please let Bob know!*** There's no guarantee that he will be able to get it, but he will try.

E-mail communications from Pierce's If you want to be included on the e-mail distribution, please let me know at pierces.store@gmail.com.

Pierce's pricing. It's not unusual for us to hear comments about prices being too high. So I've done a random review against the "big stores" downtown. There's no doubt that you can find virtually any of our products elsewhere for less money. But even I was surprised at the number of close and even lower prices at Pierce's. And I know that when I walk into Pierce's I --

and the vast majority of our customers -- will be greeted by name or at least by a friendly smile and Hello.

The table below represents a moment in time of the pricing when I checked the Big Store. I don't know whether they were special sales or not. And some items are not exactly the same -- the "*" after the item listing indicates a difference. In the case of the Beef Patties, our item derives from beef grazed on Shrewsbury land. We don't even know what state the Big Store patties are from. To me, knowing where my meat comes from is very important.

	Pierce's	Big Store
7th Gen dish detergent*	5.49	6.39
Athenos Feta, 4 oz	3.99	3.99
Bigelow Teas	4.99	3.79
Boves Spaghetti Sauce	4.99	4.89
Cabot butter	6.99	3.99
Cabot Cottage Cheese	3.99	3.99
Cabot Cream Cheese	2.99	2.69
Cabot Seriously Sharp 8oz bar	4.99	6.49
Campbell's Mushroom soup	2.99	2.09
Cedar's Hummus	3.99	3.99
Eggs, not local or free range	3.99	5.99
Generic Thin Spaghetti	2.99	2.99
Gormleys Pancake Mix	6.99	5.79
Half & Half, pint	2.99	2.09
Organic chicken broth	5.99	2.89
Organic Yogurt	6.99	4.39
Peppercorn Ranch Dressing	3.69	3.39
Raisin Bran Cereal	5.99	5.59
Salsa 16 oz	5.99	3.89
Shelled Walnuts, pound	9.99	9.99
Shredded Mozzarella	4.99	4.89
Twining Earl Gray Tea	4.99	4.29
Beef Patties, 1#*	9.99	8.99
Totals	121.86	108.36

~ Submitted by Sally Deinzer

~~~~~

## **SAVE THE DATES**

**Saturday, July 29 from 11am -2pm:**  
Pierce's Annual Blueberry Festival

**Saturday, Aug 25 from 5-7pm**  
The Lepidoptera Hour

**Saturday, Sept 16 from 5-7pm**  
2<sup>nd</sup> Annual Chlli Cook-Off

## **Summer Wine Tasting June 23**



With summer officially upon us (June 21), we'll be sampling some white and rosé wines to kick back and enjoy the long evenings. Italians definitely know how to kick back so we'll feature a crisp Soave from the Veneto region, a fresh Lugana -- a lesser known Italian white-- plus a tasty rosé or two. Join us on the porch of Pierce's Store on Friday June 23 from 4pm to 6pm for a convivial session. ~ Sandy Bragg

The Times of Shrewsbury  
PO Box 373  
Cuttingsville, VT 05738

PRESORT STD  
US POSTAGE PAID  
SHREWSBURY, VT  
05738  
PERMIT NO. 2

To: Postal Patron

---

Donors are recognized for the remainder of the calendar year in which their donation is received. The *Times* is mailed to all residents of Shrewsbury and is also available online. The cost of printing and mailing is made possible through advertising and donations and are very much appreciated, but are not tax deductible. Donations can be made to: *Times of Shrewsbury*, P.O. Box 373, Cuttingsville, VT 05738. **THANK YOU!**

Martha Andersen  
Craig & Peggy Angstadt  
Gary & Minnie Arthur  
Roy Arthur  
Nate & Angela Bailey  
Steve Banik & Virginia Gundersen  
Randell & Diane Barclay  
Mike & Elizabeth Bedesem  
John & Mary Beerworth  
John & Linda Berryhill  
Ludy Biddle  
Rich & Cynthia Biziak  
Laura Black  
Kristi & Sandy Bragg  
Virginia & Daniel Buckley  
John & Linda Calotta  
Jamie & Catherine Carrara  
Christina Clarke  
Peter & Theresa Clarke  
Marilyn Dalick  
Sally Deinzer  
Phillipe & Linda Ducrot  
Stan & Weezie Duda  
Nils & Pamela Ericksen  
Kathi & Tim Faulkner  
Gene & Kathy Felder  
Chuck & Luisa Finberg  
Liz Flint  
Eldred & Lily French  
Laurel & David Fretz  
Licia Gambino  
Jonathan Gibson & Eliza Mabry  
Richard Gile & Sue Brown  
Mark & Carol Goodwin

Pam & Peter Grace  
Greenhagen Family  
Barry & Barbara Griffith  
John & Betty Heitzke  
Betsy Hinckley  
Bob & Connie Hoelscher  
Carmine Iannace & Rita Gyls  
Martha Herbert Izzi  
Jeffrey & Diane Jakobsen  
Jack & Betsy Jesser  
Ellen Jorgensen  
Martin Kimmig & Julia Latein-Kimmig  
Michael & Angie Lauri  
Gerry & Chryl Martin  
Paddy Martin & Alice McGarey-Martin  
Stephen & Patricia Martyn  
Taffy Maynard  
Lynn McDermott  
Margaret Mills  
Jeff & Pam Monder  
Moody Family  
David & Georgia Mosher  
Jack & Joan Mulqueen  
Raymond & Cheryl Noble  
Kay O'Dowd  
Fran Patten  
Elizabeth Pattullo  
George & Doris Perry  
Jack & Sharon Perry  
Roxanne Ramah  
Ed & Adrienne Raymond  
Russell & Donna Reay  
Rainbow Riding  
Helen & Andy Richards-Peelle

Ridlon Family  
Ed & Judy Ryan  
Thomas & Donna Ryan  
Gary & Margery Salmon  
Susan Savage & Irv Gordon  
Brian & Patricia Sedaille  
Paul Sgalia & Vicky Arthur  
Alan & Linda Shelvey  
**Shrewsbury**  
Conservation Commission  
Historical Society  
Library  
Outing Club  
Volunteer Fire Department  
Sirjane Family  
Bob & Sally Snarski  
Spring Lake Ranch  
Wendy Stewart  
Tim & Nancy Stout  
Paul & Sarah Titterton  
Jess & Ariane Torres  
Beau & Cady Tudzarov  
Liesbeth van der Heijden  
Lana Vanucchi  
Howard & Deborah Weaver  
Michael & Phyllis Wells  
Nancy West  
Christel Wiedmann  
Lee Wilson  
Winkler Family  
Mark & Connie Youngstrom

