



Times of Shrewsbury



July 2023

TIME TRAVELING SHREWSBERRIES

Dearest Neighbor,

We arrived Friday evening at the home of the Allen Family. Allen & I are long-time correspondents from our corners of the Vermont frontier, sharing receipts [recipes] and practical tips. Our husbands called together local Militias to discuss the presence of the Enemy in New England.

Wedge tents went up as others arrived, some from far away Massachusetts. Most walk'd here from their homes & brought only what they could carry on their backs. The night was cold, but the children slept well as Mrs. Allen had set up a rope bed, with 3 feather mattresses, in the parlor where they all snuggled.

Saturday saw the men drilling & planning scouting raids to Canada. All were busy with the typical chores of the day: gathering firewood & fetching water, while distaff cook'd, wash'd & mended, wove baskets & tapes, & tended to children & Mrs. Allen's Garden. With no animals of our own to see to, we even had time for some games! A pleasant day!

On Sunday, a lone Brit wander'd too close to the Homestead & was promptly engaged! The quick skirmish ended with the man arreset'd & taken away. Word spread quickly, & neighbors turn'd out to join up against King George.

I believe Col. Allen was pleased with the Spirit of the men & the showing of support against tyranny. May our efforts be successful!

We return early next week. Thank you for helping the boys with the chores while we are away.

My fondest wishes to you & yours, YMH&OS, Pamela Monder

Okay, the truth...

In 2000, our family went to a "Rev War" (*Revolutionary War*) event at Hubbardton Battlefield. After spending an incredible day talking with reenactors and learning about military camp life, our daughter, then nine, asked why we weren't reenacting. Since we all love history, camping, learning, travel, reading, cooking, research, and new experiences, joining "the hobby", as participants call it, seemed natural. We contacted the local founder of Benjamin Whitcomb's Independent Corps of Rangers, and we joined! We are based in Vermont with members from all around the country but mostly New England.

When we began, Jeff dove into military (especially, naval) history. Jeff learned the Norfolk and Howe's Light Infantry manuals of arms, instruction manuals on how troops move and operate during military exercises. He currently serves as Sergeant. His hobby of blacksmithing provides tools and equipment for the hobby.



I became unit cook (five meals each weekend for up to 20 people, all period-regional-seasonally correct) and have a collection of 18th century (facsimile) books on foodways and lifestyle. Among members' favorite "victuals" are Drowned Baby and Spotted Dog (puddings), rabbit and duck stews, skillet apples, tomato and ginger preserve, and colcannon.

Some members purchase clothing and equipment from "sutlers" either online, at events, or at market fairs; most of us have learned how to make many of our own items. I'm



especially proud of the lottery coat* I hand sewed for my husband Jeff. SO many buttonholes! Patterns are available online or have been made by previous members. Men's clothing is, for the most part, easily made without patterns. Breeches are another story! They are intricate and unlike anything in the 21st century, so making that first pair is a real challenge! The only items we haven't made ourselves are shoes which we bought from a "cordwain". **(During the Revolutionary War, the Continental army held a lottery to determine coat distribution.)*

(continued on next page)

(continued from front page)

It is a physical activity. Over the past Memorial Day weekend, the temperature ranged from 42° to 85°. Most reenactors sleep in wedge tents on cots or straw. Some events provide a place where people who don't enjoy primitive camping may set up modern equipment. Everything is heavy—water in buckets, cast iron kettles—but there is camaraderie, and everyone pitches in. Participants in the hobby don't exclusively represent soldiers; there are numerous aspects of 18th century life that reenactors can demonstrate, such as basket-making, or leatherwork. Some reenactors even set up shops to sell goods to other reenactors.

Members love interacting with the public at events. It's especially exciting when youngsters express curiosity about what we do. We come from all walks of life and have a diversity of 18th century-focused interests among us. It is a fun, family-oriented hobby. Our nieces and their friends join in unit events. (We are expecting "our" first unit baby in August!) Members in our unit have ranged in age from seven to don't ask.

It is always a wonderful time shared with amazing folks. And we often end Saturday with a rousing game of Rounders!

In 24 seasons, we have traveled as far south as Cowpens, SC, and as far north as Quebec City (a most incredible [and rainy] event), as far west as Fort George, Ontario, and as far east as Old Sturbridge Village.

Over the 2023 season, we will attend:

July 8-9	Hubbardton
July 22-23	Fort Ticonderoga
August 5-6	Old Sturbridge Village
August 2-3	Mount Independence

We welcome the curious and can put folks "in kit" with advanced notice. If you want to learn more, check out our Facebook (Benjamin Whitcomb's Independent Corps of Rangers), or email anvilring@gmail.com.

~Article by Pam Monder

Vermont State Senators:

Brian Collamore: bcollamore@leg.state.vt.us

Terry Williams: twilliams@leg.state.vt.us

David Weeks: dweeks@leg.state.vt.us

Vermont State House of Representative:

RepLoganNicoll@gmail.com

The Vermont General Assembly is in session January thru June. To view committee member-ships, bills that have been introduced, track each bill's progress, and review committee agendas go to www.leg.state.vt.us. During the week you can contact your legislator by leaving a message at the State House by calling 1-800-322-5616 or 828-2228 (the Sergeant-At-Arms' Office).

United States Senators:

Senator Peter Welch

www.welch.senate.gov

Vermont Office: (800) 642-3193

Washington D.C. Office: (202) 224-4242

Senator Bernie Sanders

www.sanders.senate.gov/contact

Vermont Office: (800) 339-9834

Washington D. C. Office: (202) 224-5141

United States House of Representative:

Representative Becca Balint

Vermont Office: 347-461-4982

Washington D. C. Office: (202) 225-4115

Revised 7/1/2023

TIMES OF SHREWSBURY

The Times of Shrewsbury is published monthly from February through December, and compiled by volunteers from material submitted by residents with the goal of informing townspeople of what is happening in Shrewsbury. The views and opinions expressed in articles are solely those of the author and not necessarily those of the editors.

All submissions must be accompanied by the name of the submitting person and are printed at the editors' discretion subject to editing for length and clarity. Letters to the Editor exceeding 350 words will be subject to editing for length. Any information piece or informational political letters (without specific party or vote appeal) will be subject to the guidelines previously described.

A writer of a letter that names a Shrewsbury resident or organization in a critical manner must get copies to the resident or organization, and to the Times by the 10th of the month prior to publication or it will not run. If the named person or organization indicates in writing to the writer and to the Times that they choose not to respond, the letter will run. If the named entity responds, the response and initial letter will run in the same issue.

There is no charge for: jokes, poems, nature reports, family event announcements, or feature articles or letters that are not commercial.

Articles and Advertisements: Deadline for submission is 5pm on the 20th of the month prior to publication; exceptions will be announced in the prior month's Times.

Ads in the Times are for area businesses, local non-profit events, and local ballot election advertisements.

Best Formats: Articles: Word or as an email message with no formatting. Photos: jpeg. Ads: jpeg or Word document.

Monthly advertising fees and relative sizes:

Full page	\$100	(7.5"w x 9.5"h)
Half page	\$60	(7.5"w x 4.5" h or 3.5"w x 9.5"h)
Quarter page	\$12	(7.5"w x 2.5" h; or, 3.5"wx 4.5"h)
Business card	\$6	(3.5"w x 2"h)
Classified ad	\$3	(15 words or less)

Payment due by the 20th of the month prior to publication.

5/1/2023

Chryl Martin

~ Rich Biziak

Times of Shrewsbury, P. O. Box 373, Cuttingsville, VT 05738

Email: shrewsburytimes@gmail.com

Online: www.shrewsburyvt.org and

<http://www.shrewsburyhistoricalsociety.com>

SHREWSBURY COMMUNITY CALENDAR

June 27	noon	*Prayer Shawl Group meets upstairs at the Meeting House
June 28	7pm	*Northam Cemetery Association at either the Town Office or the Northam Fire Station
June 30	6pm	*Shrewsbury Meeting House Concert with Satyrdrag (Rain date: Sunday, July 2 @ 3pm)
July 1	3pm	**Sandglass Theater puppet show at the Russellville School House presented by SAGE
July 2	1-3pm	*Shrewsbury Historical Society Museum opens for the season
July 9	3:30pm	*Writers Group at the Library
July 14	6pm	*Shrewsbury Meeting House Concert Series with Luminous Crush
July 14	7pm	*Tom Giffin presentation on Vermont's cemeteries at the Library
July 15	6:30pm	**"Farm Boy" a film by Vermont filmmaker George Woodard at the Library.
July 16	4pm	*Famous Book Club
July 22	8am – noon	*Laurel Glen Cemetery clean-up work party
July 22	12noon -2pm	*Shrewsbury Historical Society Museum and John Bowman's Laurel Hall Open House
July 23	7pm	*Science Book Club at the Library
July 25	Noon	*Prayer Shawl Group meets upstairs at the Meeting House
July 28	6pm	*Shrewsbury Meeting House Concert Series with Moose Crossing
July 29	11am-2pm	*Annual Blueberry Festival at Pierce's Store

*see elsewhere in newsletter for details

TIMES OF SHREWSBURY

online at

www.shrewsburyhistoricalsociety.com

and

www.shrewsburyvt.org



Deadline for submission to *Times of Shrewsbury* is by 5:00pm on the 20th of each month.

REGULAR MEETINGS and EVENTS

Selectboard Meeting	1 st & 3 rd Wednesdays – 6:30pm at Town Office
Bone Builders	Tuesdays & Thursdays – 9am at Meeting House
Development Review Board	4 th Wed -7pm at Town Office; check town website for agenda
Library Trustees Meeting	2 nd Tuesday – 7pm at Shrewsbury Library
Mill River Unified Union School Board Mtg	1 st Wed 7pm @ MRHS & 3 rd Wed. 7pm at MRHS unless otherwise warned
Planning Commission	2 ⁿ & 4 th Tuesdays 7pm at Town Office
Religious Society of Friends (Quakers)	Sundays – 10am via Zoom; contact wildernessfriends@gmail.com
Shrewsbury Community Church	Sundays – 10:30am - Worship service
Shrewsbury Conservation Commission	1 st Tuesday of every month! 5:15pm at 450 Frank Lord Road
Shrewsbury Historical Society	June 25 & July 16 @ 3pm in the Museum
Shrewsbury Historical Society Museum	Opens Sundays beginning July 2, 2023; 1:00pm to 3:00pm (until October)
Shrewsbury Singers	Sundays 9-10:30am @ Russellville Schoolhouse (May, June, July)
Shrewsbury Sno-Birds	2 nd Tuesday – 7pm at Southside Steakhouse in Rutland
Shrewsbury Volunteer Fire Department	Thursdays – 7pm at the Cuttingsville Station

Shrewsbury Town Website: www.shrewsburyvt.org

Clerk's Office	492-3511	Beginning July 10, 2023: Mondays and Wednesdays 9am-1pm
Town Garage	492-3656	(Follow prompts to report roadway blockage on non-work days)
Listers	492-2009	Available by appointment
Treasurer's Office	492-3558	Monday 9am-11am
Transfer Station	492-3867	Sunday 8am-4pm ~ Wednesdays 12noon-6pm
Library	492-3410	Hours: Mon 10am-12noon; Tues 7-9pm; Wed 10am-5pm & 7-9pm; Thurs 7-9pm; Fri 10-12noon; Sat 10am-12noon
Meeting House	492-6050	Reservations: 492-3361 or julanne@vermontel.net
News Flash Email:	vtbenbeano@gmail.com or benbeano@vermontel.net an email list for Urgent and reminder news information]	

Cuttingsville Post Office 492-3585 Window Hours Mon-Fri 7:30am-10:30am and 11:30am-2:30pm; Sat 8am-11am
Lobby Hours Mon-Fri 7:30am-5:00pm and Sat 7:30am-11am

Burn Permit: Forest Fire Warden Kevin Brown 802-345-8668 or, Deputy Fire Warden Al Ridlon, Jr. 802-282-3642

Animal Control Officer: Vacant (Contact a Selectboard member) 1st Constable: Aaron Haupt 558-9980

Warden: Tim Carey 793-2776

Emergency Management Aaron Korzun 492-3362 Green Mountain Power outage 1-800-451-2877

Medical-Police-Fire Emergency Dial 911

Ambulance 773-1700

Rutland Hospital 775-7111

[Updated 7/1/2023]

Game

SHREWSBURY SELECTBOARD MINUTES

June 7, 2023: Minutes of Selectboard Meeting

Present at meeting: Selectboard members: Aaron Korzun, Marc Cimonetti Francis Wyatt. Road Commissioner: Jamie Carrara. Delinquent Tax Collector: Steven Nicholson. Town Clerk: Megan LaChance.

Members of the Public: None

The meeting was convened at 6:35 PM

Agenda: Motion made by A. Korzun to follow the agenda. Marc Cimonetti seconded. All in favor, motion approved.

Excess Weight Permit: A. Korzun made a motion to approve an excess weight permit for PVF Services LLC. Marc Cimonetti seconded. Approved.

Road Commissioner–Road Crew Staffing: Jamie Carrara reported on a potential road crew employee. Discussed pay rates.

Discussed condition of various roads. Did not get paving grant this year.

Talked about various culverts needing to be replaced.

Building Maintenance: Nothing new to report.

New Business: Steven Nicholson would like to get the authority for the Delinquent Tax Collector to be able to redeposit check number 164 directly into the general fund. The Selectboard approved.

Talked with Megan LaChance about the Town Clerk position that she will be vacating. She offered to provide some support in the transition. She will be helping to look for a replacement.

Review Minutes: A. Korzun made a motion to accept the 5/17/2023 Selectboard meeting minutes. Seconded by M. Cimonetti. Approved.

Review Orders: F. Wyatt made a motion to approve Selectboard Orders #6 for \$14,124.44 and Road Orders #6 for \$28,427.54. Seconded by M. Cimonetti. Approved.

Adjourned at 8:48 PM

Respectfully submitted, Francis Wyatt

These minutes are unofficial until approved by the Selectboard Editor's Note: The minutes have been edited for brevity but not content. For complete minutes, go to the Town website www.shrewsburyvt.org

Flood Resilient Communities Fund

is seeking applications for assistance to flood-vulnerable properties, including property buy-outs; before July 31

For information, contact
Laura Black (802-770-2084) or
Adrienne Raymond (802-492-3578)

TOWN TREASURER NEWS

Just some advance notice, it appears tax bills, because of Lister and State transitions, will be mailed later this year, likely to go out in August.

A Homestead Declaration can be filed at this time. The state website has all requirements and forms at: www.tax.vermont.gov/property-owners. The Property Tax Adjustment form, if you qualify, should also be completed.

Payments, or partial payments will be accepted and may be mailed or placed in the drop box at the town office (to the left of the front door). Also, they can be made by credit card at www.officialpayments.com. Cash will be accepted by the Town Treasurer.

Costs for credit card payment is 3.45%

Visa Debit-Flat rate \$5.20

e-check \$4.57 Flat rate

Town Treasurer hours are Monday from 9:00am to 11:00 am. Thank you, and please call if you have questions.

Linda McGuire, Treasurer

Town of Shrewsbury

9823 Cold River Rd, Shrewsbury, Vermont 05738

Shrewsbury Town Office 492-3558

Vermont State Property Valuation is (802) 828-2865 or (866) 828-2865 (toll free in VT) for information or help.

NEW

Shrewsbury Town Office Hours
Beginning July 10, 2023
Mondays and Wednesdays
9am-1pm

Town Administrative Assistant

The Shrewsbury Selectboard is looking for a Town Administrative Assistant who will:

- Attend all Selectboard meetings, take minutes, and follow up on Selectboard business.
- Maintain Selectboard files in coordination with the Town Clerk, Treasurer, and other Town Staff.
- Maintain and enhance the Town's website.
- Assist the Road Commissioner with grant applications.

Part-time \$19.00/hour

A more detailed description is available.

If interested, please contact:

Aaron Korzun 492-3362
dockorzun@vermontel.net

LETTERS TO THE EDITORS

About the Spotted Lantern Fly

We moved here a year ago from Allentown, PA area. A couple pieces of info about the influx of Lantern Flies that invaded our previous home: One of the biggest ways they 'travel' to new areas is on the undersides of motor vehicles. Attach themselves and are not blown off. Do not have a solution to resolve this area of nuisance.

Once they're here, they're here. Homes in Pennsylvania have been almost completely covered by this pest. We got a jump on this with Orkin Pest control before they moved into our immediate area. This involves spraying (we know, it's against ethics here in VT) as well as putting some kind of substance around trees. You cannot use a 'tape' to trap them, as birds get caught up in the tape as well.

This is a serious environmental issue and we pray we do not see them in your (and now our) beautiful state.

~Submitted by Jeff Litz

To My Fellow Shrewsberries:

By now you will have likely heard that I've been appointed to the position of Rutland City Attorney. I'm sure this comes as a surprise to many of you, and you're likely thinking that I'm resigning my position here as Town Clerk. I want to be perfectly clear: I am not immediately abandoning my post and setting you all adrift. While I do start with the City on July 10, I will be holding both positions until either a replacement for me as Town Clerk is found or until the next Town Meeting when my term is up for reelection. I care far too much about this town and all of you to simply leave with little to no notice.

With my new position will come some changes to the Town Clerk's Office. When I officially start with the City of Rutland, I will no longer be able to be here during regular business hours. Our amazing Assistant Clerk, Betsy Jesse, has agreed to keep the Town Office open Mondays and Wednesdays from 9am-1pm starting on July 10 and continuing until September 1. If you need assistance or access to the Town Office outside of those hours, please send me an email or call the Town Office so we can set up an appointment. After September 1st, the Clerk's office will only be open by appointment only – unless we can find a new Clerk! If you or anyone you know may be interested in the position, please get in touch with me or a Selectboard member.

Working for you here in Shrewsbury has been a true privilege, and I will certainly miss all of your phone calls and office visits. I absolutely love our little town, and facing the eventual need to leave the position of Town Clerk is bittersweet. I am not leaving town, so I do look forward to seeing you all whenever I'm out and about in Shrewsbury. In the meantime, I will see to it that we all get through this transition as smoothly as possible. Thank you all for your kindness and support these past few years! ~Megan A. LaChance, Town Clerk

Notice to Bone Builders

Due to Meeting House rentals,
there will be no Bone Builders on July 25 & 27



Laurel Glen Cemetery Work Party and Open House July 22



The Trustees of the Laurel Glen Cemetery Association will be hosting a work party on Saturday, July 22, at the cemetery in Cuttingsville in conjunction with the Vermont Old Cemetery Association (VOCA) and Shrewsbury Historical Society (SHS). Local

friends and neighbors are invited and solicited to help with the cleanup, to be held between 8 AM and noon that day. The more volunteers we have, the more we can accomplish that morning.

Wear old clothes. Bring work gloves and a shovel if you can, and something to eat and drink. No experience is necessary -- knowledgeable VOCA members will provide instructions and assistance. Broken headstones will be repaired. Markers will be straightened and cleaned. Overgrown shrubs will be trimmed. There will be something for everyone to do.

The adjacent Shrewsbury Historical Society Museum and John Bowman's Laurel Hall will be holding open houses from noon until 2pm. that afternoon in honor of the event and to reward the cemetery work party. The Sons of Union Veterans of the Civil War, Ripley Camp volunteers will also be working that day and some will be in uniform at Laurel Hall. Light refreshments will be served at the Museum by SHS. Volunteer docents will be at Laurel Hall to provide visitors with information about John Bowman and his unique Mansion. Our thanks to all the wonderful volunteers who will be offering their time and efforts.

We hope this day will be both productive and enjoyable. For more information, contact Association Trustee Barry Griffith 802 492 3573 bgriffithvt@gmail.com or Trustee and VOCA President Tom Giffin 802 773 3253 tgiftv@msn.com

~Submitted by Tom Giffin

Free Medical Equipment

Living In Place continues to provide, at no cost, medical assist equipment that has been donated by Shrewsbury residents who no longer need them. On hand right now are many wooden crutches, adjustable aluminum crutches, walkers, rollators, commodes, shower seats, bedpans, toilet safety bars, and a large wheelchair. If you need any of this equipment, call Jan O'Hara at 492-8687.

WALLY'S CORNER

Gift Shop

- ◆ Handmade and Local Goods
- ◆ Artisanal Foods
- ◆ Gardening and Home Decor
- ◆ Antiques, Toys, and More!

5304 VT Route 103, Cuttingsville, VT 05738

Hours: Wednesday-Sunday 11am-6pm

www.wallysvt.com

hello@wallysvt.com

(516) 522-4174



BRANCH BROOK EXCAVATING LLC

Driveways / Harley Raking / Ditches and Drains /
Land Clearing and Reclaiming / Stump Removal /
Retaining Walls; New and Old / Ponds/Power, Gas,
and Water Line Burial/ General Dirt Work



Benjamin Turco

1269 Branch Brook rd

Mount Holly, VT 05758

Phone: (802)770-8964

branchbrookexcavating@gmail.com

SHREWSBURY MEETINGHOUSE OUTDOOR CONCERT SERIES

Your free will donation is appreciated to support the musicians and the Meetinghouse. For more info, or to join our email list for updates, contact Vicky Arthur at 802 492 3649 or email singtolive57@gmail.com



Luminous Crush

Friday, July 14 at 6:00pm

Raindate Sunday, July 16

Laura Molinelli and Ben Campbell present indie rock, original bluegrass, dream pop and whatnot. Founded in 2015, they deliver a unique sound. They are joined by the supporting talents of Christian Heins (bass) and Bill Conley (dobro/pedal steel). "Luminous Crush live up to their name: They dazzle with brightly appointed music, and they're easy to love." – Jordan Adams,

Seven Days Sustainable Eats offers up the food for the evening, to benefit the Vermont Farmer's Food Center.



Moose Crossing

Friday, July 28 at 6:00pm

Raindate Sunday July 30

Zak Hampton, Joe Plotts, and Brian DeAngelo present MOOSE CROSSING; bringing high energy jazz, fused w/ funk, rock, & blues to the New England area for over 10 years. On sax, bass and drums, their performances take on classics from Duke Ellington to Frank Sinatra to more contemporary jazz-flavored takes on songs from The Beatles & Bruno Mars. There's something for every music lover in this group.

Marble Valley Kitchen returns with delicious meals as this evening's food vendor.



SHREWSBURY VOLUNTEER FIRE DEPARTMENT

The early summer months were bittersweet for the SVFD as we said goodbye to Al Ridlon Sr., a legacy of the SVFD. His 71 years of dedicated fire service to not only Shrewsbury but the entire state of Vermont is legendary. Al was the last charter member of the department to respond to the final alarm. Dedicated to the end, Al even attended the April business meeting. A private family burial was held at his family lot in East Clarendon Cemetery followed by a well-attended public reception at the Cuttingsville Station. As our County Fire Service President Bob Schlacter so eloquently put it: "Rest in peace, chief, we've got it from here." Shrewsbury and especially the SVFD offers condolences to the Ridlon family and gratitude for their multi-generational service to the safety and well-being of our community and state.

In general news, the department responded to alarms as follows: On April 14, the department responded to a fire alarm activation on the Upper Cold River Road; however, there was no fire. On May 24, a call went out for a lost child on Wilderness Road. The 3-year-old was quickly located and the department response was cancelled. On June 8, there was a response to an automatic fire alarm on Russellville Road which proved to be a false alarm. And finally, on June 15, a call went out to assist an injured hiker on the trail to Shrewsbury Peak. Fortunately, the hiker was able to walk with the assistance of her friends down to the Regional Ambulance waiting near the entrance to the Black Swamp Road located off the CCC Road. Quick responses by the SVFD, Regional Ambulance, Vermont State Police, and the assistance of friends helped in all of these situations.

In training, 14 members of the SVFD attended a CPR/AED refresher class taught by members of Regional Ambulance. Cardio Pulmonary Resuscitation and Automatic External Defibrillator classes are held for members every two years to keep members up to date in these lifesaving techniques

In other activities, Chief Phillip Severy Sr. and Firefighter Phillip Jr. along with Jr. Firefighters Ethan Severy and Dylan Thomas teamed up to bring Engine 2 to the Mountain School for an end of the year field day. The crew helped by providing water for different relay games and utilizing the air horn on the engine to notify students when it was time to change game stations. A good time was had by all!

This summer, the SVFD sent Junior Firefighter Ethan Severy to the Vermont Cadet Fire Academy in Pittsford, VT. The week-long academy is designed to give young potential or junior firefighters an opportunity to participate in many fire service activities and take classes from notable firefighters from around the state, other areas of the country and Canada. Way to go, Ethan! The SVFD is proud of you.

Finally, with summer and 4th of July celebrations, barbeques, and fireworks taking place, the SVFD cautions everyone to please stay safe at all of these activities. Make sure that your barbeque grills are used a safe distance from combustible items

and buildings. Be sure to turn off gas grills after use and to safely dispose of charcoal or pellets after using those types of grills. If you are using fireworks, please keep a few tips in mind:

- Always use fireworks outside and have a bucket of water/hose nearby in case of accidents.
- Designate a safety perimeter.
- Ditch faulty fireworks... your water bucket is a good place to do so.
- Supervise children when they are handling sparklers
- Don't forget about your pets... loud noises can be very stressful for many animals.

Have a safe and happy 4th of July and summer season. Also, remember to always stay fire safe!

~Article by Bob Snarski, SVFD Safety Officer



BURN PERMITS

If you are plan to burn brush you **MUST** call for a burning permit. **Contact Forest Fire Warden Kevin Brown 802-345-8668 or Deputy Forest Fire Warden Al Ridlon, Jr 802-282-3642.** The landowner is responsible to control a brush fire, ensure you have proper tools, water supply, and people to assist in containing the fire.



The Shrewsbury Mountain School PTO End of Summer Bottle Drive

Please consider saving your bottles & cans to help support our school activities.

We will come pick up your supply. Please stay tuned, pick-up weekend will be announced soon!

If you prefer to keep your storage areas neat & tidy, we have an account open at Olivia's Market Redemption Center. Visit them anytime during their open hours with your returnables, and tell them you would like to donate the earnings to the Shrewsbury Mountain School PTO.

**Contact Angie Sharrow at 492-2092
with any questions.**

SHREWSBURY LIBRARY

Library News Submitted by Joan Aleshire

LIBRARY & FOOD SHELF HOURS

Monday 10am to 12pm

Tuesday 7pm to 9pm

Wednesday 10am to 5pm & 7pm to 9pm

Thursday 7pm to 9pm

Friday 10am to 12pm

Saturday 10 am to 12pm

Please stay away if you're not feeling well, and wear a mask if you need to protect yourself and/or others.

To search the Library Catalog, put a hold on a book or DVD in our collection, and get the latest library news, please go to: www.shrewsburylibrary.org.

*MANY THANKS to the CHILDREN'S COMMITTEE (ERIN SARKOZY, DONNA SWARTZ, SARAH TITTERTON, DORIS PERRY, ANN MARIE MOODY, with help from MARGE BENINI) for hosting a super ICE CREAM SOCIAL last month! 43 kids, parents, and friends of the Library enjoyed themselves on a perfect evening under the tent!

MANY THANKS to our own Legislative Page, CABOT SPATZ, for an excellent presentation on the inner workings of the VT STATE HOUSE. CABOT was a poised, clear, and entertaining speaker, giving details that made the business of government come alive; congratulations on a fine job, CABOT!

MANY THANKS to MARTHA MOLNAR, for talking about and reading from her important book, *Playing God in the Meadow: How I Learned to Admire My Weeds*. (The book is available at Phoenix Books, or at the Library.) THANKS to WEEZIE DUDA and the Shrewsbury Conservation Commission for the refreshments!

QUILT RAFFLE TICKETS are filling up the glass jar on the Library desk! There's only a month or so before the drawing on AUGUST 5th at the STREET DANCE!

Coming Events:

Saturday, July 1 @ 3pm @ THE RUSSELLVILLE SCHOOLHOUSE: SANDGLASS PUPPET THEATER presents "OMA," co-sponsored with SAGE. (See our ad in this issue of The Times.)

Friday, July 14 @ 7pm: TOM GIFFIN of the VERMONT CEMETERY ASSOCIATION presents a program on the state's old cemeteries, before a gravestone cleaning work day the following week, sponsored by the Shrewsbury Historical Society. (There is a Meeting House concert on July 14 too, from 6pm to 7pm; sorry for the tight schedule!)

Saturday, July 15 @ 6:30pm: FARM BOY: a film by VT filmmaker George Woodard. This evocation of Vermont farm life during WWII stars Woodard's son and a local cast. It's 3 hours long; there will be an intermission and refreshments!

SAVE THE DATE:

Saturday, August 5 @ 5:30pm: HOT DOG DINNER & STREET DANCE with MARCOS LEVY and MUDDY RHODES BLUES BAND. Details to come!

Continuing Programs:

Sunday, July 9 @ 3:30pm: WRITERS GROUP. Please join us if you have poems, short fiction, or journal entries to share (1000 word limit). Contact: Penelope Weiss pw9@earthlink.net or Joan Aleshire joanaleshire@vermontel.net

Sunday, July 16 @ 4pm: FAMOUS BOOKS BOOK CLUB: Nathaniel Hawthorne's spell-binding *The House of the Seven Gables*. Copies will be available at the Library. If you need one, contact Joan (as above).

Sunday, July 23 @ 7pm: SCIENCE BOOK CLUB: *The Code Breaker*: 2nd session. Please contact Margery Salmon if you need another print or e-book: (salmonm@vermontel.net)

New Books include:

- **The Postcard* by Anne Berest, translated by Tina Kover: An acclaimed novel set in a post-WWII France, haunted by the Holocaust.
- **The Undertow: Scenes from a Slow Civil War* by Jeff Sharlet: A study of extremism by a Dartmouth professor.
- *Allergies: Our Irritated Bodies in a Changing World* by Theresa MacPhail.
- *The Making of Another Major Motion Picture Masterpiece*: a novel by Tom Hanks.
- *V is for Victory*: Franklin Roosevelt's American Revolution, and the Triumph of World War II by Craig Nelson.
- *Simply Lies*, a new political thriller by David Baldacci.
- *Built from the Fire*: the Epic Story of Tulsa... by Victor Luckerman.

STORIES FROM OLD VERMONT CEMETERIES

Please join us on
Friday, July 14 at 7pm
in the Shrewsbury Library to meet

TOM GIFFIN,
President of Vermont Old Cemeteries Association
(VOCA)

Tom will talk about his summer Saturdays repairing gravestones in Vermont cemeteries. He and his all-volunteer crew re-sets and cleans stones, and clears brush in four hours before lunch! They will come to work in Laurel Glen Cemetery in Cuttingsville on Saturday, July 22 at 8am.



GOODCITIZEN

Open to all K-8 students

CHALLENGE

2023

SCORECARD



"Freedom and Unity"

Remember This

The Social Dilemma

Oldest Building

Organize Support

Room Where it Happens

Watch the News

What's in a Name?

Running for Office

Clean Up

Pitching In

See the Spot



Stay Safe

Museum Piece

Deed Search

Shop Local

Who Turned on the Lights?

Connect With Neighbors

Think Globally

Read the Paper

Get Together

Blast From the Past

Listen to the News

Take Control

VERMONT GOOD CITIZEN CHALLENGE

goodcitizenvt.com

The Shrewsbury Library is supporting the Good Citizen Challenge open to k-8 and under 15. What can you do to support your community? Take the challenge and find out. Everyone who completes the challenge receives a patch, a pocket US Constitution, an invitation to a reception at the Vermont State house, and a chance to win a \$100 gift certificate from Phoenix books and a chance to win a trip to Washington DC.

Please go to goodcitizenvt.com for participation information and instructions. Deadline for submission is September 4, 2023.

~Submitted by Sarah Titterton, Shrewsbury Library Children's Committee



Serving up Ice Cream!

The ice cream social at the Shrewsbury Library on June 13 was a hit! Erin Sarkozy is a Children's Committee member and major volunteer of the event is pictured with her son Nathaniel who was a great helper. Some of the other volunteers (Fred Titterton and Cabot Spatz) are also pictured above.

~Submitted by Sarah Titterton

SANDGLASS PUPPET THEATER IS COMING to SHREWSBURY!



"OMA"

A show for all ages

Oma says that knitting is not just pom-pom hats and sweaters. Oma's knitting contains whole stories! This new family show by Shoshana Bass and Jana Zeller is an intergenerational tale that revolves around Grandma or "Oma." It is her birthday and all are preparing for the celebration. While the grown-ups manage work phone calls, playdate logistics and other such tasks, the children get into mischief with party decorating, present wrapping, cake baking. Finally, they all gather for one of Oma's stories told in yarn. One character emerges from the tangle of wool and nearly ruins the party. But not to worry, all ends well at Oma's house.

Oma is for audience's Pre-K - 4th (ages 4 - 9/10)

SATURDAY, JULY 1 @ 3 pm

Rain or Shine

at

Russellville Schoolhouse

18 Crown Point Road
Shrewsbury, VT

Sponsored by SAGE and Shrewsbury Library
FREE: Donations Welcome



BOOK REVIEWS

***** Fantastic
**** Compelling page turner
*** Enjoyable
** Just O.K.
* Not recommended

Rough Sleepers

by Tracy Kidder

★★★★★

Rough Sleepers is the story of Dr. Jim O'Connell who, immediately after finishing his MD training at Harvard Medical School in the early 1980s, took a one year stint working with the homeless population in Boston. That stint lasted for more than 40 years. He is still involved with the Boston Health Care for the Homeless Program.

Rough Sleepers is not an easy book to read, but it is an engrossing page turner that opened my eyes to realities I was aware of but not the humanity behind them. Author Tracy Kidder spent 4 years, off and on, with Dr. Jim and his staff, whether in the Program bus making nighttime tours of the city, or in the shelter, or in the hospital. The book tells stories of the people he met on those tours.

Had Dr. Jim returned to the traditional path once the year was over, he would have been pushed to see diseases rather than people; to limit the time he spent with each patient because of financial pressures rather than taking the time to listen. His leadership and efforts helped change the lives of thousands of people. The Health Care for the Homeless Program is an integral part of Boston's medical establishment, with a mission to "ensure unconditionally equitable and dignified access to the highest quality health care for all individuals and families experiencing homelessness in our community." They have assumed a leadership role with communities around the country in working with their homeless populations.

I highly recommend this book and give it 5 big stars.

~ Review by Sally Deinzer

WOOHOO!!

42

SHREWSBERRIES

Have contributed articles, poems, photos, and info to include in the July 2023 edition of the Times of Shrewsbury. That just might be a record!

The "Times" is for, about, and by Shrewsbuerries, and it's great to have so many contributing!

Shrewsbury Historical Society

www.shrewsburyhistoricalsociety.com

"As long as wood grows and water runs"

For many of our new neighbors they may not be aware of the Shrewsbury Center Cemetery located on the end of Cemetery Road, opposite the Town Meeting House in Shrewsbury Center. In the history book, "Our Town As It Was" by Dawn Hance, the cemetery consisted of one acre and was deeded to the town by Stephen Gleason, to be enclosed by a stone wall and with Mr. Gleason retaining the privilege of pasturing his horses, sheep and cattle there. The deed was for as long as "wood grows and water runs."

The cemetery land was officially established in July of 1813, the year of the lung fever epidemic, which was spread throughout New England by soldiers returning from the War of 1812. About 30 people died in Shrewsbury. A total of 12 men who served in the Revolutionary War are buried here, including Lemuel White, a Revolutionary war soldier and the first settler in Shrewsbury. Other early settlers buried here are Nehemiah Smith, Philemon Adams, Uriah Cook, Jonathan Jones, Amos Knight, William Lord, Samuel Low, Benjamin Needham, Phinehas Page, William Russell, and Reuben Brown.

(The above information was from research by Charlie Davis in history book with permission of Dawn Hance.)

On Memorial Day, 30 American flags were donated by the VFW, and Gary Shattuck placed them all at the veterans' gravesites. Thanks, Gary.

Today, the lovely cemetery is surrounded by a stone wall and tall trees which were planted in 1859. Enter through a vintage gate and you can circle the outer sides of the drive all the way back to entrance. Better still, park and enjoy the peaceful tranquility of an over 200-year-old cemetery. The information on the stones is a lesson in history.

The upkeep of the grounds is always kept neat and clean in the hands of Donna Smith, proprietor of Maple Crest Farm. But now, there is a big problem. Some of the tall trees are starting to fall and need to be taken down before they damage the grave stones.



At the recent meeting of the Shrewsbury Center Cemetery Association, the President Donna Smith informed the members of the cost of downing those large trees. I am **appealing** to the readers of this column to please help in the cause of safety and love of all things historical.

Make check payable to:
Shrewsbury Center
Cemetery Association
c/o Donna Smith
2512 Lincoln Hill Road,
Shrewsbury, VT 05738

Museum opens for season

The Shrewsbury Historical Society Museum officially opens on **Sunday, July 2nd. from 1pm to 3pm**. It will be open Sundays only, same time, until last Sunday in October.

Historical Society Meetings

June 25 3pm Historical Society meeting at museum
July 16 3pm Historical Society meeting at the museum

~Photo by Chryl Martin; Article by Ruth Winkler



Shrewsbury's Poor Farm

"To either Constable of Shrewsbury in the County of Rutland – Greeting – By the Authority of the State of Vermont You are hereby Required to Summon George Perry and his family now residing in Shrewsbury to Depart said Town..."

So ordered the Shrewsbury Selectmen on July 13, 1819. As early as 1792 (just 5 years after the first Town Meeting) such an order was given to persons "likely to become chargeable to the Town and have not Gained a Legal Residence In Said Town..." It was called a "warning out". But what was that all about?

On February 15, 1779, the Vermont General Assembly passed two laws dealing with the poor and transients, "An Act for Maintaining and Supporting the Poor" and "An Act for the Ordering and Disposing of Transient Persons". These laws, common throughout New England, required that each town was responsible for supporting and maintaining its own poor, infirmed, elderly, orphans, and widows. But who was a resident and therefore entitled to this care? That was answered in statute by: "... no person shall gain a settlement in any town in this State, and be liable to be supported thereby, unless such person was born therein, or has owned, or shall own, Estate in such town of the value of two hundred pounds...." Therefore, persons determined not to be residents could be "warned out". In many cases this did not mean they actually left town, just that the town was not obligated to support them.

Those entitled to town care received long term lodging with accepting families, food, clothing, medical care, firewood and travel assistance, at the expense of town taxpayers, all very detailed by individual name and service provided in annual town reports. Tramps, on the other hand, were treated differently. At Shrewsbury's 1876 Town Meeting it was resolved that "the Overseer of the Poor shall furnish to each tramp one pound of crackers and lodge them if it is necessary and furnish nothing else unless in case of sickness and lodging not to exceed 25 cents per night". That year the Town appropriated \$ 2.39 for "3/4 bbl. of crackers for town farm". \$2.61 was spent in August for "crackers and lodging for 10 tramps". The elected Overseer of the Poor arranged for those who needed care, who could provide it and kept an annual detailed account of all costs.

As early as the 1835 Town Meeting, the Town considered the establishment of "a Poor House". Article 6 of that meeting stated, "To see if the Town will take measures to provide a Poor house for said Town...". The article was "dispensed with". In 1846, another vote was taken "To see if the Town will adopt measures for the purchase of a farm for the support of Paupers". Wm. Marsh, B.T. Needham and Jonah Aldrich were voted as a committee "to purchase a Farm for the support of Paupers", as well as "farming tools and necessities". Apparently, nothing happened, since, eight years later, in 1854, another vote was warned for the "purchase of a Town farm for the support of the poor in said Town". Again, no action was taken.

In 1860, the Overseer's account totaled \$627.86 for care of the poor. Some items listed were: "Keeping John Grimes 4 2/7 weeks, \$17.00", "Use of a cow for one year, \$6.00", Amputating John Grimes arm, \$40.00, Digging grave for Mrs. Hollis Holden, \$1.00".

Another attempt at establishing a Town Farm was made in 1869. The warning read, "To see if the Town will vote to purchase a Town Farm". That must have been an interesting meeting. It was first voted to "pass

over the article in warning relating to purchasing a Town Farm" but later in that same meeting it was "Voted to purchase a Town Farm" and a committee of three was appointed to "purchase a Town Farm with discretionary power when to buy and at what price".

The next year, 1870, was even more interesting, in that the voters were asked, "To see if the Town will vote to sell Town Farm" (which had just been purchased). The article was "passed over" with no action and the "Report Of Committee To Purchase Town Farm" provided extensive detail of the purchase which had taken place the previous year. A 184-acre farm, owned by Henry Starkey, known as the "Barney Farm" was purchased for \$3,900, plus 14 "milch cows", hay, sugaring and farm equipment, and many tools, all worth \$1,000. That property is now part of the current Town Farm Wildlife Management Area at the end of Lottery Road and foundations and stone walls, once part of the farm are still there.

In 1873, the Town leased the farm to Richard Lloyd in return for Lloyd accepting "all transient or other paupers that may come upon said town during the term of said lease". The Town continued to reimburse costs for care of folks, such as: "1 pair of boots for Johnson boy, \$3.50", "preaching 3 sermons to poor, \$9.00, "keeping transient woman and 2 children overnight, 75 cents".

During 1878, it was reported 101 tramps had been kept overnight at the Town Farm, although there are no records regarding how many folks actually lived and worked at the farm. Significant improvements were made to the house and buildings, "all new sills, new floors and newly boarded", "great improvements on the town barns". But, that year, the voters were again asked "To see if the Town will vote to sell the Town Farm". And, again, the article was "passed over".

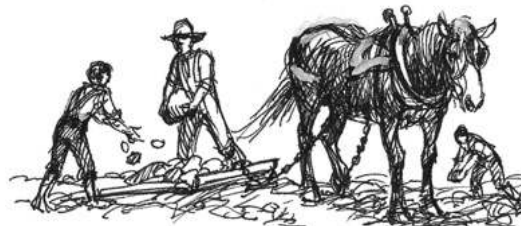
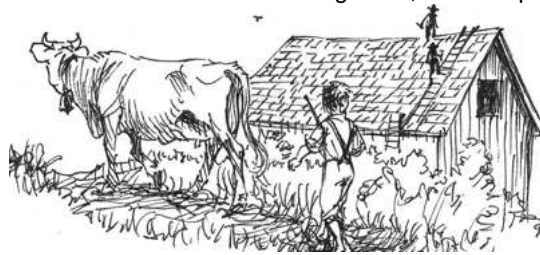
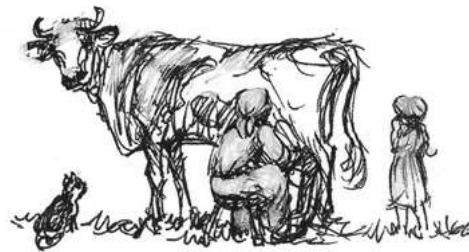
However, at the 1901 town meeting, it was again warned "To see if the town will sell the Town Farm, if so, to appoint a committee to deed the same". That year the article finally passed. S.F. Smith, E.O. Aldrich and O.W. Lincoln were appointed to sell the farm "if in their judgement they find it in the best interests of the town..." By 1903, the "Poor Farm"

was no longer owned by the Town. Perhaps the management of a farm for transient folks, who may not have had farming skills or abilities, was not a sustainable option. But, care of the poor still continued under the Overseer of the Poor, and individuals were still reimbursed for the care and support services they gave.

State and Federal support of the poor began as a result of the Great Depression and the financial burden on towns diminished. In 1933, FDR signed the Federal Emergency Relief Act, providing funds to States to assist with local poverty. In 1935, Social Security was started. Shrewsbury elected its last Overseer of the Poor, Hull Maynard, in 1968. Today, local support for neighbors in need still exists. The Helping Hand Fund of the Shrewsbury Community Church, much like the system of the 1800's, is there to provide emergency needs for anyone in town suffering unfortunate circumstances. Neighbors still helping neighbors as it should be.

~Artwork by Grace Brigham
~Article by Mark Youngstrom

Footnote: The George Perry referenced in the first paragraph is not to be confused with the current Shrewsbury resident with the same name.





SHREWSBURY MOUNTAIN SCHOOL

Our students had some amazing end of year celebrations!

Our Music Concert and Graduation Celebration was beautiful! Our students performed with such poise and joy! Huge congrats to our 6th graders moving on to Mill River Union High School!



FIELD DAY! Thank you PTO volunteers for supporting an EPIC field day experience for all our students! We had 8 multi age groups engage in amazing games and activities thanks to coordinators Sarah Bolster and Ali Wilson. We had a HUGE turn out of parent/grandparent volunteers as well as our local heroes from the Shrewsbury Volunteer Fire Department!



SHREWSBURY MOUNTAIN SCHOOL

Our students had some amazing end of year celebrations!



Pre-K Celebration and step up day!



Kindergarten and Grae 1 Field trip to Shrewsbury Peak! A beautiful climb!



SHREWSBURY MOUNTAIN SCHOOL

Our students had some amazing end of year celebrations!



Grade 2 Memorial Day Field Trip to Northam Cemetery where students placed flags in honor of our Veterans. They also celebrated the end of the year with a GLOW party!



Grade 3 and 4: Celebrating the year OUTSIDE!



SHREWSBURY MOUNTAIN SCHOOL

Our students had some amazing end of year celebrations!



Grade 5 and 6 Trout Release Field Trip:



6th Grade Field Trip to White Rocks and Kelly's Snack Shack for an ice cream cone!
Congrats graduates!

Photos and Captions submitted by Kristin Cimonetti, Principal, Shrewsbury Mountain School

The Shrewsbury Community Church



Compiled by Sue Ransom-Kelley



We've been busy at the Shrewsbury Community Church! We did a community service project making Adult Bibs for local nursing homes. We were able to complete 15 bibs. Thanks to our Team: Cortney Allard, Julianne Sharrow, Sue Ransom-Kelley and Elaine Ransom!

On June 11 Tiffany Dayton and Julianne Sharrow hosted a breakfast for bicycle riders doing a charity ride for the Vermont Southwest Association of the United Church of Christ at the center church. Thank you Ladies!

The kids in the Sunday Funday Program have had a good year! They recently made wind chimes, wildflower seed screens for planting, barbeque aprons for dads for Father's Day and they are doing some baking for a local family in need. They will take the summer off when we move to the Northam Church and resume the program in September. Thank you to our leaders: Cortney, Allison and Lynette!

Yes, it's that time of year already when we move our Sunday Services for July and August to that little white church in



Northam, on the Cold River Road next to the town office and just around the corner from Pierce's Store! Come and visit with your neighbors and enjoy this beautiful community treasure! You will find that little has changed in this beautifully maintained church in the past couple of centuries. Folks will find the same oil lamps and beautiful Etsy Pump Organ our ancestors used in this building in the 19th and 20th centuries. It truly is a special place to worship!

Prayer Shawl Group

The Shrewsbury Prayer Shawl Group will meet Tuesday, June 27 and Tuesday, July 25 @ noon upstairs at the Shrewsbury Meeting House. All are welcome to attend! Dessert, coffee, and tea will be served. Bring a bag lunch if you would like to. If you don't know how to knit or crochet, we will teach you! Questions call Roxanne 802-492-3675 or Sue 802-779-4825.

Shrewsbury Community Church Calendar

- Tuesday, June 27, 12:00pm Prayer Shawl Group upstairs at the Meeting House.
- Sunday, July 2, 10:30am. Worship Service led by Rev. Bev Anderson @ Northam Church.
- Sunday, July 9, 10:30am. Worship Service @ Northam Church.
- Sunday, July 16, 10:30am. Worship Service @ Northam Church.
- Sunday, July 23, 10:30 am. Worship Service led by Rev. Bev Anderson @ Northam Church.
- Tuesday, July 25, 12:00 pm. Prayer Shawl Group upstairs at the Meeting House.
- Sunday, July 30, 10:30am. Worship Service @ Northam Church

FOOD SHELF ON PIERCE'S STORE PORCH

With the summer weather we are opening our Shrewsbury Community Church Summer Food Shelf on the side porch at Pierces Store in North Shrewsbury.

Community Food Shelf

Free Community Food Shelf at the Library in the front entry way. Those in need are welcome to help themselves any time the Library entryway is open. Limited hours are: Mon 10am-12noon; Tues 7-9pm; Wed 10am-5pm and 7-9pm; Thurs 7-9pm; Fri 10am-12noon; and, Sat 10am-12noon.

We have our additional Summer Food Shelf on the side porch at Pierces Store in North Shrewsbury. Those in need are welcome to help themselves.

Food Delivery and Assistance If you are unable to get to the Food Shelf at the library in Shrewsbury, we will deliver groceries to you. If you need items which are not available on the shelf we can provide grocery gift cards. Call Karen at 802-558-5991 or Sue at 802-779-4825 or 802-492-3738.

Community Needs

- Wedding, Funeral or Memorial Service Requests: Contact Donna Smith 802-492-3367; or Sue Kelley 802-492-3738, 802-779-4825
- Community Helping Hand Requests: Contact Donna Smith 802-492-3367; Sue Kelley 802-779-4825, 802-492-3738; or Karen Lorentz 802-558-5991. Shrewsbury residents experiencing financial hardship. Assistance can be given for basic needs (food, heating, gasoline, etc). If you or a neighbor are in need, please let us know!
- Pastoral Care, Home, Hospital Visitation, Outreach Requests: Contact Roxanne Ramah 802-492-3675 or Ruth Kinne 802- 775-5318.



Blue Heron nests on Johnson Pond

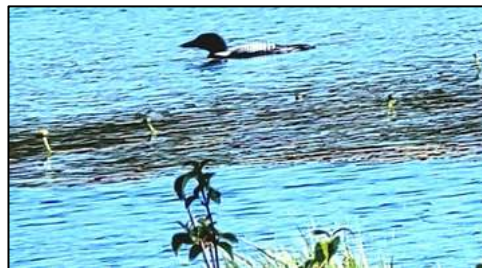
Photos by Doris Perry

Loons on the Pond!

For the last couple years I have been corresponding with the Vermont Eco Studies program to report loon sightings, chicks, and failed nests, etc. Ali Jesser Wilson and Emmett Sirjane are also a part of the Studies, and It's wonderful there is conservation interest in Vermont.

We now have a pair of nesting loons on our little Johnson Pond!! We first heard the loon call May 3rd. Gracie Brigham had an up and close personal encounter a couple weeks ago while canoeing. She believes she saw several eggs, but she didn't linger! Now that she's aware of their nesting spot she says she'll steer clear as to not upset them.

Hearing their haunting calls brings me shivers! So lovely!! This is the 3rd year they have come to visit and we find it extremely exciting and quite unbelievable because they need one quarter of a mile clearance to fly off the water in the fall. The pond is barely that "as the crow flies"!



The pond is across from our home and it's such a magical place to enjoy while sitting on our porch. Although the overgrowth makes it difficult to see anything, just hearing the wildlife is so pleasantly exhilarating and relaxing.

Naturally, we have geese and ducks; turtles and salamanders (crossing signs courtesy of Connie Youngstrom); peepers and frogs; plus, nesting herons for many years. I'm sure many owners of fish ponds are not happy with the herons but they have to eat too. Fortunately for the herons, there are some well-stocked ponds close by.

We also had recent moose sightings going to and from the pond. It's been a while since that has happened in our yard!

Tyler Ford, a friend of ours, took the attached photo that he shared with me of one of the loons in May. We were able to catch a glimpse of it from a distance.

~Submitted by Kathy Carrara

TIMES OF SHREWSBURY

ONLINE

<http://www.shrewsburyhistoricalsociety.com>

AND

www.shrewsburyvt.org



Shrewsbury Conservation Commission

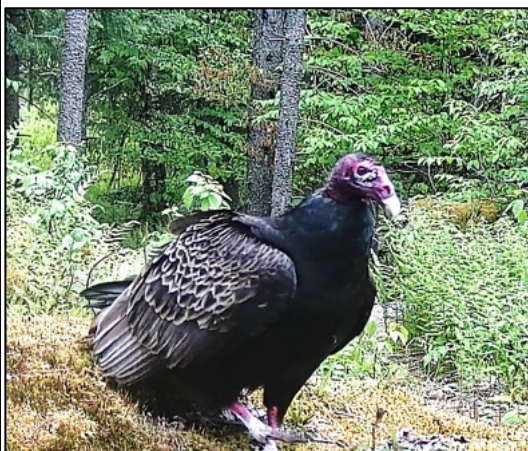
Trail Camera Picture of the month



This month we have a cow moose shared by Paula Van Valkenburgh.



Linda Shelvey captured a large male bear, a buck with velvet antlers, and to further prove that you just never know what will be on your SD card, a posing turkey vulture! The bears are



definitely back! My last camera check had a video of last year's triplets with mama sow, all looking healthy!

If you have a picture or track to share email Linda Shelvey Lpurdyshe1@gmail.com



A Jack In the Pulpit Memory

I have seen four of these this year off the AT for the first time in over 20 years. So excited. It brought to mind the words to a song I learned as a child:

*There was a little man standing in the wood.
He wore a purple cloak and a long black hood.
Tell me who this man can be,
Standing there so quietly,
In his purple cloak and his long black hood.*

~Submitted by Marti Andersen



PVF Services LLC

Excavation, Trucking, driveway repair, site prep, building removal, brush grinding and much more!

Neal and Chad

1368 Lincoln Hill

Cell 802 236 8105

Shrewsbury VT, 05738

Office 802 492 3364

sharrowmaple@gmail.com



SHREWSBURY MOUNTAIN SCHOOL

If you would like to volunteer to help with weeding our school garden please contact me at the school. We are hoping to have a beautiful harvest this Fall!

On Wednesday, June 14, we hosted the school board meeting here at SMS where I presented on our school's sustainability mission and all of the wonderful outdoor learning that has been happening this year!

It has been a pleasure to serve as your school principal. It is an honor to work with our talented and dedicated educator team and a joy to get to know every student and see them grow in their learning! I hope everyone has a beautiful summer and I look forward to next school year! ~Kristin Cimonetti

802-786-3995 kcimonetti@millriversschools.org



Bone Builders

9-10am

Every Tuesday and Thursday
at the Meeting House on Lottery Road
Free weights and Instruction

Join us to improve your
Bones, Balance, and Strength



Success Story!

Hey Shrewsbury Residents! It's time to toot your horns for the many volunteers and landowners who have been assisting the Shrewsbury Conservation Commission in trying to manage several species of invasive plants. We know the plants we are targeting are harmful because they have been overpowering native habitats, thus depriving an important food source to native insects, who provide food for native birds, who provide food for... on up the



food chain it goes. The world population of insects and pollinators is drastically reduced in recent years, partially because their habitat is changing so dramatically due to invasive plants, development, and herbicide use. So reducing or eliminating invasive plants is important but we often question if our efforts can possibly be effective.

Thanks to the dedication and persistence of many volunteers, the coordination and passion of Pam Darrow the SCC Invasive Czarina, and increasing numbers of landowners, we seem to be winning a few of the battles! Drive down our roads (where most of the invasive plants slip into town) and Notice What You Don't See! You don't see much Chervil – that white flowering plant that is covering most roadside east of us. Here are photos of the Shrewsbury/Mt Holly town line where volunteers have repeatedly prevented the chervil from overtaking our "side" of the town line.



Poisonous Parsnip is much reduced, both on roadsides and in fields where landowners are religiously mowing several times each year before it goes to seed. Loosestrife is reduced in several wet areas and landowners are mowing to prevent further spreading. In areas where garlic mustard has been overtaking the forest, its population has been reduced, though it does seem to pop up in new places, much to our frustration.



There are many other invasives that harm our environment that we haven't put a dent in.

So thank you for those of you who step up to help manage these targeted plants and give yourselves a big pat on the back. We welcome the energy of new volunteers of most ages! Please notify Pam Darrow 492-3102 if you are interested!

~~Article by Louise Duda



The 2023 Arbor Day Award honoring Gary Salmon accepted by his sister Judy Geng and wife Margery Salmon.

2023 Vermont Arbor Day Award

The prestigious Vermont Arbor Day Award is given to an individual who has made a significant difference in his or her community's urban and community forest by the Vermont Urban and Community Forestry Program (VT UCF). The Shrewsbury Conservation Commission nominated Gary Salmon of Shrewsbury for the Vermont Arbor Day Award which was subsequently awarded posthumously to Gary who passed away in January. For 36 years, he was a forester with the Vermont Department of Forests, Parks and Recreation, serving as district state lands forester and urban and community forester, among other roles. Salmon was the Shrewsbury tree warden and organized volunteers to inventory ash trees to plan for the emerald ash borer. He was a champion of the Vermont Big Tree list and measured many species that remain on the list today.

He will be remembered as the "Shrewsbury Lorax" and "Vermont's Arbor Day Hero" for his love and appreciation of trees. He led the state's Arbor Day celebration for many years, including creating educational programming for schools and organizing efforts to obtain seedlings for distribution to students. ~Submitted by VT UCF and Margery Salmon



Shrewsbury families!

- Did you build a bluebird box with us back in March?
- Did you then mount your box and enjoy watching bluebirds this spring?

We would like to gather your photographs and stories to publish a follow-up article to share the community's success with building and enjoying these bluebird homes! Send stories and photos to: carriesclancy@aol.com



A Walk Among the Ferns

250 million years ago, the earth endured a mass extinction event, but ferns were among the few life forms to persevere. And in Shrewsbury, we can only just set foot in the woods before stepping on one or two of the Triassic species that have survived!



The Shrewsbury Conservation Commission was honored to host Lynn Levine, Vermont's first female forester, now an author and nature educator, to lead a fern identification workshop in Shrewsbury Center

on June 18. Fifteen local enthusiasts gathered at the meeting house for introductions and a short lesson on the fern life cycle. Lynn used a combination of visual aids and live plants to instruct the group how to immediately designate ferns into one of four groups based on structure and silhouette. Once categorized into a group, ferns must be examined for several key characteristics in order to be identified. These attributes include, but are not limited to, feeling for a grooved stalk, locating spore clusters, noticing leaflet patterns, and determining if the fronds are clustered. So, equipped with copies of Lynn's pocket guide *Identifying ferns the Easy Way*, the group set out to observe the common ferns of the northeast.

Along the roadside and wooded footpath where the Long Trail meets Keiffer Road, lush ferns abound. Mere steps apart, the group observed at least seven different species of ferns! Using the methods and tips in Lynn's handy guide, participants recognized the Lady Fern by its thrice-cut blade and scaly stalk and the New York Fern by its twice-cut blade, non-vase-like cluster, and the leaflets dramatically shorter near its base. Other positive fern IDs that day included the Interrupted Fern, Sensitive Fern, Evergreen Wood Fern, Ostrich Fern, and even a possible Massachusetts Fern that is still awaiting confirmation.

While ferns may grow in numerous habitats in the northeast and at various times of year, early summer is a perfect time to observe the abundance of ferns in the moist environments here in Shrewsbury. The SCC encourages you to become acquainted with the ferns in our town, and to appreciate the fascinating history of their endurance. Thank you to Lynn Levine for empowering others with this knowledge, and to all of the workshop attendees for your commitment to learning more about our natural surroundings. ~Submitted by Carrie Clancy

~~~~~

## SNO-BIRD NEWS



Well, it is early in the summer but we are busy putting in a grant to help with buying 2 tracks for the Tucker, they are over \$9,000.00 each. We also put in for a de-brushing grant for about 9 miles of our trails. The last couple of years Dave Fucci has gone out with his excavator with a brush head. He can reach way up and get the overhanging branches, what a difference it makes after a snow storm. That will be done in early fall. I pulled the speedometer out of the Tucker and sent it out for repair. It just came back the other day and now I will reinstall it to make sure that it works. We need to clean the Tucker and start looking for other parts that need repair or replacement. As with any job there is always something to do even if it is volunteer work.

At our last meeting all officers stayed the same, for some reason no one was interested in taking over. We all are glad to do what we can for the club and every one is welcome to join us. Pres. Mike Stewart, VP. Roy Arthur, Treas. Mike Gabriele, Sec. Michele Taube. Appointed Trail Coordinator - Roy Arthur. Board of Directors - Scott Ballard, Bill Lohsen, Scott Ryan, Dave Fucci. Reach out to any of us if you have any questions. The first day of summer is tomorrow, we hope every one is enjoying the nice weather! ~Submitted by Roy Arthur



We welcome tennis players to use and enjoy our tennis court this summer. The court is just west of the home at 7983 Cold River Road. Extra racquets and balls are in the red shed adjacent to the court. Come anytime—no need to call!! ~Taffy Maynard 773-2087

**Stewart Maple Marketplace**  
Shop to support your local business community  
Maple Products - Specialty Foods - Artisan Gifts  
made by Vermonters.

**Open Hours : Thursday-Saturday 11am-5pm  
Sunday 11am-4pm**

**5444 VT ROUTE 103 SHREWSBURY VT 05738**  
**www.stewartmaple.com**

Shop online and have it shipped or pick-up curbside



## MONTHLY CRAFT NIGHT AT WALLY'S CORNER

### UPCOMING EVENTS

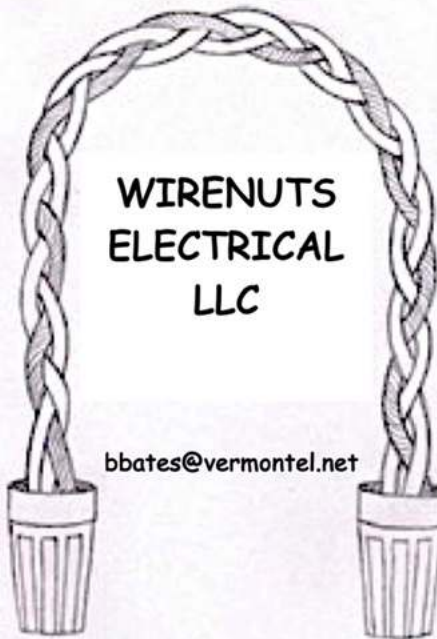
|                   |                                                        |
|-------------------|--------------------------------------------------------|
| May 27, 2023      | Monthly Craft Night: Build a Self Sustaining Terrarium |
| June 24, 2023     | Monthly Craft Night: Lilac Honey Infusion              |
| July 22, 2023     | Monthly Craft Night: Succulent Pots                    |
| August 12, 2023   | Monthly Craft Night: Drying Flowers Using Silica Gel   |
| September 9, 2023 | Monthly Craft Night: Spa in the Garden                 |

Details can be found on Facebook  
under "Wally's Corner Events".  
Generally each event is 4pm-  
5:30pm @ Wally's Corner Store



All events have Prizes, Giveaways, and Discounts Store Wide  
with Private Shopping!

Wally's Corner 5304 VT Route 103 Cuttingsville, VT 05738



WIRENUTS  
ELECTRICAL  
LLC

bbates@vermontel.net

REBECCA BATES  
LICENSED  
ELECTRICIAN  
802-492-3406  
802-353-4376



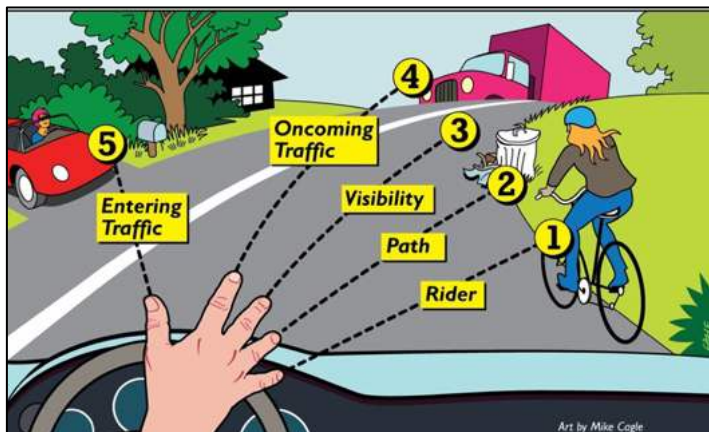
## THE NEW LEARNING PROJECT

CHOOSING TO EXPERIENCE OUR POTENTIAL

MUSIC LESSONS -- Guitar, Piano, and more  
RED CROSS COURSES -- First Aid, CPR, Lifeguarding  
SWIMMING INSTRUCTION  
(More services at website)

STUDIO IN CUTTINGSVILLE VT  
www.TheNewLearningProject.com  
TheNewLearningProject@gmail.com  
802.492.3208

Marcos Levy  
Instructor with over 30 years  
of Experience



Slow Down for inspection and the "All Clear."

- (1) **Rider** -- Check rider age, skill, and lane location\* to gauge passing clearance.
- (2) Clear **Path** -- Check that the path the rider is following is clear.
- (3) Clear **Visibility** -- Unobstructed view of road; no hills or blind curves.
- (4) Clear of **Oncoming Traffic** -- Do not pass when there is oncoming traffic.
- (5) Clear of **Entering Traffic** -- Road is clear of at-risk entry points.

"All Clear!"

Pass gently with gauged clearance and rider's comfort in mind.

\*If the rider is near the center of the lane, they have "taken the lane." Don't pass.

www.strongtowns.org

~Submitted by Daphne Hemmer

Isn't it your time to Thrive?  
Celebrating 23 Years!

Thrive Center  
OF THE GREEN MOUNTAINS

Chiropractic Care • Therapeutic Massage  
Holistic Health Education  
Stress Reduction Products  
Nutritional Supplements • Coaching

802-446-2499

68 South Main Street • Wallingford  
uthrive@vermontel.net • thriveinvermont.com



## Spring Lake Ranch

therapeutic community

For nearly 20 years, Spring Lake Ranch has been participating in the Rutland Farmers Market, selling products that are made by our residents and staff here on the hill. Being at the market is a great opportunity for us to meet locals and represent the Ranch. Residents who work at our booth have even found it is a place to network and find job opportunities. Not only does this help us set up our residents for success, it furthers our mission of healing through community.



While most of what we grow in our gardens ends up on the table at mealtime here at the Ranch, there is still plenty for us to share with market-goers. A large part of crew time on Gardens is spent preparing for the market. On Fridays, we load up the vehicle so it's ready for the next morning, as we have to leave around 8:15 on Saturday to get to the market on time. We bring eggs from our chickens, maple granola that is made from our own maple syrup, and pesto that is made from basil that we grow. The pesto is nut-free, so that is a big selling point. We also bring items that are made during the wintertime by our Gardens Crew. We weave mittens, rugs, dog leashes, guitar straps, and coasters. Sometimes other crews also provide items that we sell at the market, such as the dryer balls from Farm Crew or an occasional handmade table from Shop Crew. When it comes to working the booth, we break the day into two shifts. There is always a program coordinator—a staff member who lives and works side-by-side with residents—and a resident on duty. It is a fun opportunity that folks on the hill are eager to sign up for. Our booth at the Farmers Market raises thousands of dollars a year, and all the proceeds go to our scholarship fund.

Recently, a woman stopped and began admiring our chenille scarves. She asked if she could touch one and of course we said yes! She was hooked. She bought one of our beautiful, velvety soft scarves even though it was a very warm day. It means a lot to our residents to see folks connect with products that they worked hard to make. It teaches them that they are capable and skilled and have the capacity to touch the lives of others with their work. It is a privilege to get to participate in the market. The Ranch and its residents benefit in so many ways by attending. We hope it is a tradition that will continue for many years to come. ~Article by Loretta Fermin and Anna Sutton

## RIVERWOOD LAWN CARE, LLC

Fully Insured

Patrick Angstadt

802.770.0433

riverwoodlawncare@gmail.com

Mowing, Trimming  
Spring and Fall Cleanups

FREE ESTIMATES

## FOR SALE

Cemetery Plot in  
Laurel Glen Cemetery  
Cuttingsville, VT.

Price: \$600.00 (Negotiable)

Contact: Fran Patten  
Phone: 973-862-6013 or  
Email: franandrich13@gmail.com



Ms. Bonafine's K-1 students celebrate their raised bed planting

We had a wonderful time planting the Shrewsbury Mountain School garden this past month. Over the course of 2 sunny days each class came out in turn to plant their unique educational raised bed. When the students come back in the fall they will have flowers, tea, and other garden treats to visit!

SAGE and SMS are calling for volunteer help to keep the garden thriving this summer. Please contact us at [educate.sage@gmail.com](mailto:educate.sage@gmail.com) if you are interested in pitching in to water and weed. Watch our Facebook page for garden party announcements. Special thanks to Marc Cimonetti for getting the compost bin lumber up to the school, and for Terri Harrington for taking care of the wasp nest Marc encountered!

With the end of school and the start of summer activities, we are excited to welcome Shoshana Bass and Jana Zeller's Sandglass Theater back to the Russellville Schoolhouse on July 1 at 3pm. They will be presenting "Oma" A Joyful Story of Celebration, Generations, and Storytelling in Yarn. This puppet show is recommended for Pre-K to 4th grade audiences, and would be a great show to experience with the grandchildren.

For more information about SAGE: contact Stephen Abatiell at [educate.sage@gmail.com](mailto:educate.sage@gmail.com), Joan Aleshire at 492-3550 or visit [www.sagevt.wordpress.com](http://www.sagevt.wordpress.com).

~Submitted by Stephen Abatiell

## Shrewsbury Meetinghouse Outdoor Concerts

(Concerts for June elsewhere in this issue)

**AUG  
18**

**PANHANDLERS**

**AUG  
20**

**SEP  
1**

**SPINTUITION**

RAIN OR SHINE  
Concert will be  
Inside if raining



**Local Small Farm Flavor  
& Quality!**

\* **Bakers Doz of ground beef**  
(13) 1-lb Packages \$78.

\* **VT Maple Syrup**  
1/2 Gallons \$30.

**Thank you for supporting our small farm !!**

2450 Lincoln Hill  
Shrewsbury VT

[SmithMapleCrestFarm.com](http://SmithMapleCrestFarm.com)  
802-492-2151

## COMING AUGUST 25<sup>th</sup>

The Lepidoptera Hour  
Fashioned after The Moth  
Whether a woman of power  
Or a man of the cloth  
Each one of us  
Has a story inside  
Let's discuss  
Share our pride  
In August we'll share  
At Pierce's store  
Stories with care –  
Stay tuned for more

~Thomas Hartigan



Despite the cold, damp and rainy weather we had during May and early June, Rainbow Riding Center finished up a full spring session of lessons for area elementary and high school students. Our summer session begins after July 4th and there are still lesson sessions available for anyone interested.

We would like to thank all the Ladies that attended the May Mt. Holly Ladies Night at Stonewall Farm for their interest, support and their generous donations to Rainbow Riding. Also, a BIG thank you to all our wonderful volunteers who are an essential part of our program.

We are still looking for day lilies to fill out the hillside below the riding ring, so if you have extras you would like to get rid of, please think of us and drop them off on the side hill below the ring at Stone Wall Farm/Rainbow Riding Center, Tarbelville Road, Belmont. Thank you.

For more information, please visit our website: [rainbowridingcenter.org](http://rainbowridingcenter.org) and follow us on Facebook or Instagram @rainbow\_riding\_center. Contact us at [programs@rainbowridingcenter.org](mailto:programs@rainbowridingcenter.org) or 802-236-2483 to inquire about our programs and lessons. For info about opportunities to volunteer contact [janetupton@rainbowridingcenter.org](mailto:janetupton@rainbowridingcenter.org).

~Submitted by Janet Upton



72 Old Turnpike Road, Mount Holly, VT • \$599,000

## Life Takes You Places

LET US HELP YOU FIND THE PLACE YOU DON'T WANT TO LEAVE

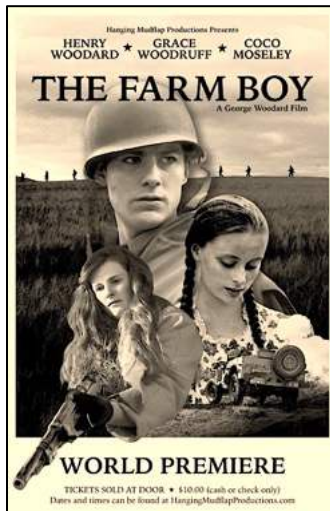


126 Main Street, Ludlow, VT 05149 +1 802-975-0338  
[okemo.evrealstate.com](http://okemo.evrealstate.com)

©2023 Engel & Völkers. All rights reserved. Each brokerage independently owned and operated. Engel & Völkers and its independent License Partners are Equal Opportunity Employers and fully support the principles of the Fair Housing Act.

## Vermont Filmmaker George Woodard's The Farm Boy Comes to Shrewsbury July 15

The Shrewsbury Library will be screening *The Farm Boy*, a feature film set during World War II filmed entirely in Vermont, on Saturday July 15 at 6pm. The film, loosely based on Woodard's father, depicts the coming of age of a young man from a Vermont hill farm thrust into the Battle of the Bulge in Belgium.



The film, which features Woodard's 30-year-old son, Henry, a landscaper and sugar maker in real life, was mainly shot on Woodard's 200-acre farm in Waterbury Center. Woodard, who will attend the Shrewsbury event along with the film's producer Joan Brace O'Neal, joked that filming in Belgium was "too far to get back in time for milking." While making the film, he sold his dairy herd but still raises beef with a herd of 25 cows. He milks one cow once a day.

*The Farm Boy*, shot in black-and-white, evokes a pastoral Vermont as Henry's character, serviceman Calvin Dillard, falls in love with a young woman he meets on his milk route. The second half of the two-hour-plus movie is set during the Battle of the Bulge in winter 1944, as Calvin is nursed back to health by a French woman.

"I wanted to present a time period that people my age will look at and relate to, and younger people can look at it and see a type of lifestyle that is gone," Woodard said.

Writing the screenplay, Woodard made use of letters his father wrote from boot camp. For the dialogue, he borrowed phrases recalled from his parents, such as his father's description of the Dodge flatbed truck used to pick up milk at local farms: "It'll go downhill like a jackrabbit but going uphill, it wouldn't pull a hat off a churchgoer."

"If you're gonna be a small farmer, there's one thing you have to know: You have to know how to do everything," George said, noting that the same is required of a small moviemaker. "I think that's a strong point for me. That, and I have a 200-acre back lot."

George, who is 70 but likes to say he's 'close to 80', spent time in Los Angeles working in the movie industry as a grip and a set builder. George returned to Waterbury Center after a few years to help his brother run the family farm. "I didn't want to bail on the farm," he said. "And I realized there's nothing they're doing [in California] that I couldn't do back home — as long as you have a camera, lights, some actors and a good story."

Following the screening, Woodard and producer Joan Brace O'Neal will discuss the project and answer questions from the audience.

~Article by Sandy Bragg

~Photo Courtesy of Hanging Mudflap Productions

### Validation

When there is a void  
Fill it or cross it  
Your heart, deployed  
You've found, not lost it

By Thomas Hartigan

### You Are The One

One's  
Natural  
Empathy  
Offers  
Nascent,  
Exponential  
Opportunities,  
Now  
Experienced.

by Thomas Hartigan

### Smolder

When a love smolders  
Increase the dialogue  
It's like adding  
Oxygen to the fire  
Your flame gets brighter  
And the heat increases

By Thomas Hartigan



Nothing beats Local  
Small Farm Flavor &  
Quality, so throw a  
cooler in your car and  
stop by for a bit of our

### VT Maple Syrup & Maple Products

Our bottled VT Maple Syrup, Candies,  
Spreads, Sugars, & Sauces

### Grassfed Beef

Steaks, Burger, Sausages, Ribs & Roasts

### Local Pork

Chops, Country Ribs, Gound, Sausage,  
Smoked Bacon, Smoked Ham Steaks

### Shop our Farm Store

2450 Lincoln Hill | Shrewsbury VT

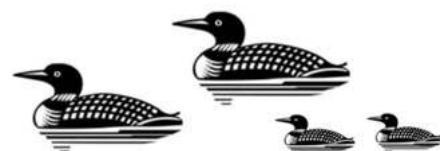
10am - 5pm - Sat, Sun, Mon, Wed Thurs.

10am - 3pm - Fri

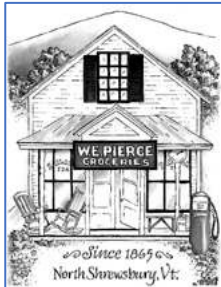
4pm - 7pm - Fri @ Ludlow Farmers Market

53 Main St | Ludlow, VT

802-492-2151 [SmithMapleCrestFarm.com](http://SmithMapleCrestFarm.com)



Spring Lake has two loon chicks!



## NEWS FROM PIERCE'S STORE 802-492-3326

Bob Knudsen, Manager

Happy Independence Day! I am back in the saddle and ready for some summer fun

### SUMMER HEAT IS HERE, ALONG WITH SUMMER EVENTS

The best time of the year is here: Blueberry Season! We are once again hosting our Blueberry Festival, scheduled for Saturday, July 29 in Pierce's Garage. Be sure to come on by and share in some of our friends and neighbors locally grown blueberries and blueberry items. We will have jams, baked goodies, and of course, fresh picked blueberries the size and flavor of which are unmatched anywhere in the world.

Besides blueberries, we also have all of your other summer treats, including ice cream and tasty treats! Biggy Iggy, 802 Bars, Strafford Pints, and more! Not an ice cream person? No worries, we also have gelato, ice pops, and other freezer treats. If you have a specific flavor, brand, or type of ice cream or frozen treat you would like to see, let us know, we will do our best to get it for you! We can even order certain ones by the case if that's your jam. Speaking of ice cream, we are also joining the Concert Series at the Meeting House to sell 802 Bars for \$3 for several of the concerts.

### UPDATED ORDER SCHEDULES

A lot of people have been asking for an updated delivery day for our most popular items, so here are a few highlights:

#### Baked goods:

Wednesdays and Saturdays Button Hill (treats):

Wednesdays: The Bakery (bread and cookies):

Sundays: Jones Donuts

Mondays: Rob bakes cinnamon rolls and croissants on Sundays in the store for sale on Monday

#### Regular stock:

Wednesdays: Capital (groceries, dairy, tobacco)

Fridays: Upper Valley Produce (produce and meats)

Every other Tuesday: Associated (natural and specialty groceries, bulk items):

Every other Friday: Provisions (specialty cheeses, groceries, and dairy)

Every other Tuesday: Wilcox (Ice Cream)

#### Beer and Wine:

Tuesdays: Farrell (Budweiser, several wines, other beers)

Wednesdays: Baker (Coors, Switchback, PBR, Shed, Twisted Tea, etc)

Thursdays: Calmont (wine)

Thursdays: Vermont Wine Merchants (wine)

Coffees, Brown's Cider, Goodman's Pizza, Larson Dairy, Craft Beer, and a number of other items are ordered on an as needed basis, as are the majority of our other items.

Local items from our friends and neighbors as needed, including from Smith Maple Crest Farm, Stewart Maple,

Evening Song, Stone's Throw Farmstead, and Spring Lake Ranch, as well as from our fabulous local artisans who provide us with locally crafted consignment goods. We do also get local eggs from a couple of people, but due to the increased animal activity this spring, many of our regular egg providers have been a bit behind the last few months. If you or somebody you know has local eggs to sell or share, please let us know!

A reminder that we have more than 70 active vendors in stock, so if you would like more specific information about a particular product or item, please feel free to ask! ~Bob Knudsen

### From Pierce's Board

Summer is officially here, school is officially over and Pierce's Store is prepared and looking forward to the season.

We're excited to announce that the

**Pierce's Store Website at**

**[www.piercesstore.com](http://www.piercesstore.com)**

has been updated. Take a look, we've tried to fill our site with timely and up to date information. The new 'Daily & Weekly news section' will be updated several times each week with the latest news and special offerings. Keep an eye on the Weekly/Monthly specials and the 2023 Events section.

And speaking of events, first on the list on

**Saturday, July 29 from 11am to 2pm**

**Pierce's Annual Blueberry Festival**

Let's see if we can beat the amazing turnout we had at our May beer tasting. Keep an eye on the website for additional events and announcements.

**E-Mailing News:** You may have also noticed that Pierce's mailings are going out on a much more regular basis. We're working hard to ensure our local customers know what's happening at the store. If you are not receiving the E-mailings and would like them, let us know at [pierces.store@gmail.com](mailto:pierces.store@gmail.com)

**Be a Member!** If you are not already a member of the Pierce's cooperative, please consider joining. The cost is only \$20 per year (on a calendar year basis) and membership gets you a 2% discount at the register. More importantly, you will be helping to support an important local resource and a piece of Vermont history. ~Submitted by Ed Sawyer, Pierce's Board of Directors



*Members of the Board of Directors for Pierce's are more than a pretty face. Larry Abelman and Ed Sawyer freshened up the signs on the outside of the store. Lily French did too, but she's not pictured. ~Bob Knudsen*

The Times of Shrewsbury  
PO Box 373  
Cuttingsville, VT 05738

PRESORT STD  
US POSTAGE PAID  
SHREWSBURY, VT  
05738  
PERMIT NO. 2

To: Postal Patron

Donors are recognized for the remainder of the calendar year in which their donation is received. The *Times* is mailed to all residents of Shrewsbury and is also available online. The cost of printing and mailing is made possible through advertising and donations and are very much appreciated, but are not tax deductible. Donations can be made to: *Times of Shrewsbury*, P.O. Box 373, Cuttingsville, VT 05738. **THANK YOU!**

Marti Andersen  
Craig & Peggy Angstadt  
Gary & Minnie Arthur  
Roy Arthur  
Nate & Angela Bailey  
Steve Banik & Virginia Gundersen  
Randell & Diane Barclay  
Mike & Elizabeth Bedesem  
John & Mary Beerworth  
John & Linda Berryhill  
Ludy Biddle  
Rich & Cynthia Biziak  
Laura Black  
Kristi & Sandy Bragg  
Virginia & Daniel Buckley  
John & Linda Calotta  
Jamie & Catherine Carrara  
Christina Clarke  
Peter & Theresa Clarke  
Marilyn Dalick  
Sally Deinzer  
Phillipe & Linda Ducrot  
Stan & Weezie Duda  
Nils & Pamela Ericksen  
Kathi & Tim Faulkner  
Gene & Kathy Felder  
Chuck & Luisa Finberg  
Liz Flint  
Eldred & Lily French  
Laurel & David Fretz  
Licia Gambino  
Jonathan Gibson & Eliza Mabry  
Richard Gile & Sue Brown  
Mark & Carol Goodwin  
Pam & Peter Grace

Greenhagen Family  
Barry & Barbara Griffith  
John Guidry & Tamako Okamura  
John & Betty Heitzke  
Betsy Hinckley  
Bob & Connie Hoelscher  
Carmine Iannace & Rita Gyls  
Martha Herbert Izzi  
Jeffrey & Diane Jakobsen  
Jack & Betsy Jesser  
Ellen Jorgensen  
Martin Kimmig & Julia Latein-Kimmig  
Michael & Angie Lauri  
Ed & Clare Mangine  
Gerry & Chryl Martin  
Paddy Martin & Alice McGarey-Martin  
Stephen & Patricia Martyn  
Charlotte & Todd Maynard  
Taffy Maynard  
Lynn McDermott  
Margaret Mills  
Jeff & Pam Monder  
Moody Family  
David & Georgia Mosher  
Jack & Joan Mulqueen  
Raymond & Cheryl Noble  
Kay O'Dowd  
Fran Patten  
Elizabeth Pattullo  
George & Doris Perry  
Jack & Sharon Perry  
Susan & Robert Quinn  
Roxanne Ramah  
Ed & Adrienne Raymond  
Russell & Donna Reay  
Rainbow Riding

Helen & Andy Richards-Peelle  
Ridlon Family  
Ed & Judy Ryan  
Thomas & Donna Ryan  
Gary & Margery Salmon  
Susan Savage & Irv Gordon  
Brian & Patricia Sedaille  
Paul Sgalia & Vicky Arthur  
Alan & Linda Shelvey  
**Shrewsbury**  
Conservation Commission  
Historical Society  
Library  
Outing Club  
Volunteer Fire Department  
Sirjane Family  
Donna Smith  
Bob & Sally Snarski  
Spring Lake Ranch  
Wendy Stewart  
Tim & Nancy Stout  
Paul & Sarah Titterton  
Jess & Ariane Torres  
Beau & Cady Tudzarov  
Liesbeth van der Heijden  
Lana Vanucchi  
Howard & Deborah Weaver  
Michael & Phyllis Wells  
Nancy West  
Christel Wiedmann  
Lee Wilson  
William & Peggy Wilson  
Winkler Family  
Mark & Connie Youngstrom



Happy 4<sup>th</sup> of July

