



Times of Shrewsbury



August 2023

MEMORIES OF HIGH WATER EVENTS

Water has raged down Cold River Road and over the bridge in Cuttingsville many times over the years with varying memories of what happened and how bad each storm was. There have been many photos documenting the infrastructure—roads, culverts, and bridges.

However, we see few photos documenting the basement cleanup so many people experience after such heavy rains. Elevation does not always relieve one of the experience either. One family at the top of Lincoln Hill Road guesses they shuttled over 100 gallons of water out of their basement on the first night. That does not compare with what some people on Route 103 experienced where chest high water caused days of clean up and distress. There is also the collective stress we all feel when so many throughout Vermont experience hardships created by such weather.

Memories of past storms are always brought to mind when similar events occur, thus:

July 2023: Rain, Rain, Rain!

After a National Weather Service two day total of 5.66" rain, a portion of Cold River Road was washed away, but the hardest hit in Shrewsbury during this event may have been the homes and businesses along Route 103 in Cuttingsville. The depth of the water in homes exceeded that of Hurricane Irene. Appliances including furnaces were submerged (though some floated!) and homes have been left with deep sludge to clean up after the water subsided.

Unlike during Irene, no bridges were lost during this recent storm most likely due to the Road Crew's upgrades to culverts and roadside drainage after Hurricane Irene.

For a week the road to Spring Lake Ranch was closed from the gate to the lake with warnings of "soupy" spots that swallowed vehicles that had to be towed! Also, the CCC Road will need much work, and currently there is no timeline for repair.

2023



August 2011: Hurricane Irene

The National Weather Service reported 5.88" of rain was dumped on Shrewsbury in a 12-hour period. There was extensive damage to the town's infrastructure including the Brown Bridge, Frank Lord Road Bridge, Cold River Road, and the Clement Shelter Bridge. Road Commissioner Jamie Cararra said Shrewsbury lost eight bridges during Irene. Also, during Irene, teams of community members were organized by Louise and Stan Duda, and they jumped on the effort to organize to help out during the 2023 storm as well.

March 1977: "A lot of rain"

Doris Perry said that a whole embankment gave way and wiped out the G & G Store (Gas & Groceries) in Cuttingsville, and three feet of mud was left on Route 103 which prompted the Mudslide Music Festival benefit concert.

June 1973: Flash Flood in Cuttingsville

The National Guard came with military dump trucks and bulldozers to haul gravel from Upper Cold River Road for repairs all over town. Jeff Smith says they Maple Crest B & B was the command center, and townspeople brought food to the "Town Hall" to feed them. Grace Brigham's memory is that it was a "humdinger." She said a portion of Route 103 pavement was picked up and plopped down in the cow pasture. "It looked like an airstrip!"

November 1927: The Big One?

To date the most devastating flood in the state of Vermont is most likely the flood of 1927 when 8-10 inches of rain fell, both bridges in Cuttingsville were destroyed, 84 Vermonters lost their lives including the Lieutenant Governor. Summarized in an article by Marjorie Pierce in the November 1987 issue of the *Times of Shrewsbury*, it was a catastrophic event. We can only hope a weather event like the one in 1927 will never become one of **our** memories.

Article by Chryl Martin

Photos Louise Duda, Lavinia Seide,
Tim Stout, and Gina Stewart

START YOUR RECOVERY PROCESS

1 Take photos of your damaged home and belongings.

2 Make a list of damaged or lost items.

3 Save yourself time. If you have insurance, you must file a claim with your insurance company. If you do not have insurance, skip to step 4.

4 3 Ways to Apply

- Online [DisasterAssistance.gov](https://www.disasterassistance.gov)
- Through the FEMA app
- Call: (800) 621-3362

If you use video relay service (VRS), captioned telephone service or others, give FEMA your number for that service.

Disaster Recovery Center (DRC) Locator:

To find a DRC near you visit fema.gov/drc or download the FEMA app.



Vermont State Senators:

Brian Collamore: bcollamore@leg.state.vt.us

Terry Williams: twilliams@leg.state.vt.us

David Weeks: dweeks@leg.state.vt.us

Vermont State House of Representative:

RepLoganNicoll@gmail.com

The Vermont General Assembly is in session January thru June. To view committee member-ships, bills that have been introduced, track each bill's progress, and review committee agendas go to www.leg.state.vt.us. During the week you can contact your legislator by leaving a message at the State House by calling 1-800-322-5616 or 828-2228 (the Sergeant-At-Arms' Office).

United States Senators:

Senator Peter Welch

www.welch.senate.gov

Vermont Office: (800) 642-3193

Washington D.C. Office: (202) 224-4242

Senator Bernie Sanders

www.sanders.senate.gov/contact

Vermont Office: (800) 339-9834

Washington D. C. Office: (202) 224-5141

United States House of Representative:

Representative Becca Balint

Vermont Office: 347-461-4982

Washington D. C. Office: (202) 225-4115

Revised 7/1/2023

TIMES OF SHREWSBURY

The Times of Shrewsbury is published monthly from February through December, and compiled by volunteers from material submitted by residents with the goal of informing townspeople of what is happening in Shrewsbury. The views and opinions expressed in articles are solely those of the author and not necessarily those of the editors.

All submissions must be accompanied by the name of the submitting person and are printed at the editors' discretion subject to editing for length and clarity. Letters to the Editor exceeding 350 words will be subject to editing for length. Any information piece or informational political letters (without specific party or vote appeal) will be subject to the guidelines previously described.

A writer of a letter that names a Shrewsbury resident or organization in a critical manner must get copies to the resident or organization, and to the Times by the 10th of the month prior to publication or it will not run. If the named person or organization indicates in writing to the writer and to the Times that they choose not to respond, the letter will run. If the named entity responds, the response and initial letter will run in the same issue.

There is no charge for: jokes, poems, nature reports, family event announcements, or feature articles or letters that are not commercial.

Articles and Advertisements: Deadline for submission is 5pm on the 20th of the month prior to publication; exceptions will be announced in the prior month's Times.

Ads in the Times are for area businesses, local non-profit events, and local ballot election advertisements.

Best Formats: Articles: Word or as an email message with no formatting. Photos: jpeg. Ads: jpeg or Word document.

Monthly advertising fees and relative sizes:

Full page	\$100	(7.5"w x 9.5"h)
Half page	\$60	(7.5"w x 4.5" h; or 3.5"w x 9.5"h)
Quarter page	\$12	(7.5"w x 2.5" h; or, 3.5"wx 4.5"h)
Business card	\$6	(3.5"w x 2"h)
Classified ad	\$3	(15 words or less)

Payment due by the 20th of the month prior to publication.

5/1/2023

Chryl Martin

~ Rich Biziak

Times of Shrewsbury, P. O. Box 373, Cuttingsville, VT 05738

Email: shrewsburytimes@gmail.com

Online: www.shrewsburyvt.org and

<http://www.shrewsburyhistoricalsociety.com>

SHREWSBURY COMMUNITY CALENDAR

July 28	6pm	*Shrewsbury Meeting House Concert Series with UnReel
July 29	11am-2pm	*Annual Blueberry Festival at Pierce's Store
July 30	3pm	*Shrewsbury Singers concert at the Meeting House
July 31		*Deadline to apply to Flood Resilient Communities Fund
Aug 5	5:30	*Shrewsbury Library's Dog Daze Dinner and Street Dancer at the Meeting House
Aug 11	7pm	*Steve Abatiell's presentation on Vietnam Village at the Library
Aug 11	8pm	*"Dance of the Moths" walk and talk with JoAnne Russo, at the Meeting House
Aug 13	3:30pm	*Writers Group meets at the Library
Aug 18	6pm	*Shrewsbury Meeting House Concert Series with The Panhandlers
Aug 20	4pm	*Famous Books Club meets at the Library
Aug 27	7pm	*Science Book Club meets at the Library
Aug 25	5pm	*Lepidoptera Story Hour at Pierce's Garage
Aug 30		*First Day of School
Sept 1	6pm	*Shrewsbury Meeting House Concert Series with Spintuition
Sept 2	9am - noon	*Mycology educator & author, Meg Madden, leads a walk to learn about mushrooms
Sept 17	10am till ?	*Shrewsbury Day – SAVE THE DATE!

*see elsewhere in newsletter for details

TIMES OF SHREWSBURY

online at

www.shrewsburyhistoricalsociety.com
and
www.shrewsburyvt.org



Deadline for submission to *Times of Shrewsbury* is by 5:00pm on the 20th of each month.

REGULAR MEETINGS and EVENTS

Selectboard Meeting	1 st & 3 rd Wednesdays – 6:30pm at Town Office
Bone Builders	Tuesdays & Thursdays – 9am at Meeting House
Development Review Board	4 th Wed -7pm at Town Office; check town website for agenda
Library Trustees Meeting	2 nd Tuesday – 7pm at Shrewsbury Library
Mill River Unified Union School Board Mtg	1 st Wed 7pm @ MRHS & 3 rd Wed. 7pm at MRHS unless otherwise warned
Planning Commission	2n & 4th Tuesdays 7pm at Town Office
Religious Society of Friends (Quakers)	Sundays – 10am via Zoom; contact wildernessfriends@gmail.com
Shrewsbury Community Church	Sundays – 10:30am - Worship service
Shrewsbury Conservation Commission	1 st Tuesday of every month! 5:15pm at 450 Frank Lord Road
Shrewsbury Historical Society	August 20, 2023 @ 3pm in the Museum
Shrewsbury Historical Society Museum	Opens Sundays beginning July 2, 2023; 1:00pm to 3:00pm (until October)
Shrewsbury Singers	Sundays 9-10:30am @ Russellville Schoolhouse (May, June, July)
Shrewsbury Sno-Birds	2 nd Tuesday – 7pm at Southside Steakhouse in Rutland
Shrewsbury Volunteer Fire Department	Thursdays – 7pm at the Cuttingsville Station

Shrewsbury Town Website: www.shrewsburyvt.org

Clerk's Office	492-3511	Beginning July 10, 2023: Mondays and Wednesdays 9am-1pm
Town Garage	492-3656	(Follow prompts to report roadway blockage on non-work days)
Listers	492-2009	Available by appointment
Treasurer's Office	492-3558	Monday 9am-11am
Transfer Station	492-3867	Sunday 8am-4pm ~~ Wednesday 12noon-6pm
Library	492-3410	Hours: Mon 10am-12noon; Tues 7-9pm; Wed 10am-5pm & 7-9pm; Thurs 7-9pm; Fri 10-12noon; Sat 10am-12noon
Meeting House	492-6050	Reservations: 492-3361 or julanne@vermontel.net
News Flash Email:	vtbenbeano@gmail.com or benbeano@vermontel.net an email list for Urgent and reminder news information]	

Cuttingsville Post Office 492-3585 Window Hours Mon-Fri 7:30am-10:30am and 11:30am-2:30pm; Sat 8am-11am
Lobby Hours Mon-Fri 7:30am-5:00pm and Sat 7:30am-11am

Burn Permit: Forest Fire Warden Kevin Brown 802-345-8668 or, Deputy Fire Warden Al Ridlon, Jr. 802-282-3642

Animal Control Officer: Vacant (Contact a Selectboard member) 1st Constable: Aaron Haupt 558-9980

Warden: Tim Carey 793-2776

Emergency Management Aaron Korzun 492-3362 Green Mountain Power outage 1-800-451-2877

Medical-Police-Fire Emergency Dial 911

Ambulance 773-1700

Rutland Hospital 775-7111

[Updated 7/1/2023]

Game

SHREWSBURY SELECTBOARD MINUTES

The Selectboard meets the 1st and 3rd Wednesday at 7pm at the Town Office.

June 21, 2023: Minutes of Selectboard Meeting

Present at meeting: Selectboard members: Aaron Korzun, Marc Cimonetti Francis Wyatt. Interim Administrative Assistant: Laura Black. Zoning Administrator: Adrienne Raymond.

Members of the Public: None

The meeting was convened at 6:34pm.

Agenda: Motion made by A. Korzun to follow the agenda with the following addition: Sheriff's contract. Marc Cimonetti seconded. All in favor, motion approved.

Building Maintenance: Speed cart issues turned out to be a blown fuse. Fixed now.

Sheriff's Contract: Aaron Korzun made a motion to approve the Sheriff's contract from July 1st, 2023 through June 30th, 2024, which is capped at \$10,497. Marc Cimonetti seconded. Approved.

Road Crew Staffing: Hired a new road crew employee. We will require a contract for reimbursement of the CDL training costs if prematurely leaving employment with the Town. The Selectboard asked Laura Black to look into the language for the contract.

Flood Resilient Communities Fund for flood vulnerable properties: Laura Black learned from the State that there are available funds for purchasing flood vulnerable properties. Deadline to apply for the funds is July 31, 2023. The funds appear to be very generous and cover pretty much all of the costs for buying the property at market rate as well as site cleanup. The Selectboard is supportive of pursuing it further.

Digitizing Records: Laura is still getting quotes. Need to meet minimum internet speeds.

New Business: None

Review Minutes: A. Korzun made a motion to accept the 6/7/2023 Selectboard meeting minutes. Seconded by M. Cimonetti. Approved.

Review Orders: F. Wyatt made a motion to approve Selectboard Orders #6a for \$15,739.55 and Road Orders #6a for \$63,985.98 (\$47,446.94 is for loader lease payment). Seconded by M. Cimonetti. Approved.

Adjourned at 8:06pm.

Respectfully submitted, Francis Wyatt

These minutes are unofficial until approved by the Selectboard at the next regularly scheduled meeting.

~~~~~

### July 5, 2023: Minutes of Selectboard Meeting

**Present at meeting:** Selectboard members: Aaron Korzun, Marc Cimonetti, Francis Wyatt. Interim Administrative Assistant: Laura Black. Road Commissioner: Jamie Carrara. Class 4 Road Committee: Louise Duda, Melissa Reichert, Alan Shelvey, Cynthia Thornton.

**Members of the Public:** None

The meeting was convened at 6:35 PM

**Agenda:** Motion made by A. Korzun to follow the agenda with the following addition: Replacement appointment for the Conservation Commission. Marc Cimonetti seconded. All in favor, motion approved.

**Conservation Commission Appointment:** Aaron Korzun made a motion to appoint Michelle Greene to the Conservation Commission. Marc Cimonetti seconded. Approved.

**Class 4 Roads Committee:** Louise Duda presented the Class 4 Road Study with maps and extensive information regarding Shrewsbury's Class 4 roads. The Class 4 Road Committee offered to work on developing and or refining the Class 4 Road policy. The Selectboard requests the Planning Commission develop a draft of the Class 4 Road policy in cooperation with the Class 4 Road Study Committee and the Road Commissioner for the Selectboard's later review.

**Paving Bids:** Received 3 paving bids for Eastham Road. Fuller Sand and Gravel: \$165,966.25 at \$85/ton. Pikes Industries: \$167,324.92 at \$82.42/ton. Wilk Paving: \$190,634.50 at \$85.80/ton. A. Korzun made a motion to award the paving contract to Fuller Sand and Gravel. Marc Cimonetti seconded. Approved.

**Flood Resilient Communities Fund for flood vulnerable properties:** Laura Black reported that as of today, no one has expressed an interest in taking advantage of the full market value buyout grants.

**Digitizing Records:** Laura reported that the town office met the minimum internet speed requirement once an ethernet cable was used instead of WiFi. Don't have any new bids yet, but probably will by next meeting.

**New Business:** Jamie Carrara reported that there is an unsafe Fedex driver that is not being courteous and driving too fast around the Town trucks. He's concerned that there might be an accident.

**Review Minutes:** A. Korzun made a motion to accept the 6/21/2023 Selectboard meeting minutes. Seconded by M. Cimonetti. Approved.

**Review Orders:** A. Korzun made a motion to authorize the Treasurer to borrow from the Reserved Funds when necessary. F. Wyatt seconded. Approved. M. Cimonetti made a motion to make a correction to payroll orders 6/21/23 that corrected fees that totaled \$166 were for 4/25-5/6. F. Wyatt made a motion to approve Selectboard Orders #7 for \$6,157.73 and Road Orders #7 for \$6,175.20. Seconded by M. Cimonetti. Approved.

Adjourned at 9:11 PM

*Respectfully submitted, Francis Wyatt*

~~~~~

SHREWSBURY SELECTBOARD MINUTES

July 19, 2023: Minutes of Selectboard Meeting

Present at meeting: Selectboard members: Aaron Korzun, Marc Cimonetti, Francis Wyatt. Emergency Shelter Manager: Sharon Winnicki. Interim Administrative Assistant: Laura Black.

Members of the Public: Bob Ferguson, Stacey Tyler, Barb Ferguson, Liesbeth van der Heijden. Debbie Schoch

The meeting was convened at 6:34 PM

Agenda: Motion made by A. Korzun to follow the agenda. Marc Cimonetti seconded. All in favor, motion approved.

Flooding Event Report: Aaron Korzun summarized the recent flood events. The Selectboard would like to thank Road Commissioner Jamie Carrara, Shrewsbury Road Crew: Dan Cavato, Nate Webster, Gary Martin, John Elwert, Contractors: Beardmore Excavation, Cold River Enterprises, C. N. Webster Excavation, Markowski Excavation, PVF Services.

Emergency Management: Towns people that sustained damage to their properties should contact 211 to report their damage and document it.

Debbie Schoch stated that the town should be careful and encourage volunteer cleanup groups to follow all state recommended safety procedures – that there could be some liability issues.

Sharon Winnicki would like for there to be better communication during the next emergency.

Marc Cimonetti suggested that we set up a system to communicate via the various social media platforms – as well as additional forms of communication for those who do not use social media – that is accessible to the Selectboard.

Bob Ferguson mentioned that there is a Facebook page for Shrewsbury, that maybe is maintained by Kathy Beauchain. Bob also suggested that we should have a list of vulnerable people to be checked up on in emergencies.

Stacey Tyler mentioned that some people don't have access to internet communications and would need to use other means like the telephone.

Digitizing Records: Laura Black reported that we received an updated quote for digitizing.

New Business: Aaron Korzun stated that we need to find a person to be in charge of the FEMA reporting for the flood event.

Review Minutes: A. Korzun made a motion to accept the 7/5/2023 Selectboard meeting minutes. Seconded by M. Cimonetti. Approved.

Review Orders: F. Wyatt made a motion to approve Selectboard Orders #7a for \$811.84 and Road Orders #7a for \$46,122.56. Seconded by M. Cimonetti. Approved.

Adjourned at 8:05 PM

Respectfully submitted, Francis Wyatt

These minutes are unofficial until approved by the Selectboard at the next regularly scheduled meeting.

Editor's Note: The minutes have been edited for brevity but not content. For complete minutes, go to the Town website www.shrewsburyvt.org

~~~~~

**NEW**  
**Shrewsbury Town Office Hours**  
**Mondays and Wednesdays**  
**9am-1pm**  
or by appointment  
**(802) 492-3511**



Nothing beats Local  
Small Farm Flavor &  
Quality, so throw a  
cooler in your car and  
stop by for a bit of our

### VT Maple Syrup & Maple Products

Our bottled VT Maple Syrup, Candies,  
Spreads, Sugars, & Sauces

### Grassfed Beef

Steaks, Burger, Sausages, Ribs & Roasts

### Local Pork

Chops, Country Ribs, Gound, Sausage,  
Smoked Bacon, Smoked Ham Steaks

### Shop our Farm Store

2450 Lincoln Hill | Shrewsbury VT

10am - 5pm - Sat, Sun, Mon, Wed Thurs.

10am - 3pm - Fri

4pm - 7pm - Fri @ Ludlow Farmers Market

53 Main St | Ludlow, VT

802-492-2151 [SmithMapleCrestFarm.com](http://SmithMapleCrestFarm.com)

### Judith Meacham Lawry

Judith "Judie" Meacham Lawry passed away on June 26, 2023, at the Avalon Health Care Center in Mystic, CT after an unexpected battle with a degenerative motor neuron disease. Throughout her final months, days, and last moments, she was supported by and surrounded by loved ones.



Judie was born in Middlebury, VT on February 10, 1944, the daughter and only child of Ralph James Meacham and Marion Margaretta Frasier. At the age of 5, Judie moved in to live with her aunt, Agnes Jackson. Judie's mother Marion passed away in 1950, and she was raised thereafter by her grandmother, Mina Frasier Munger. Her father Ralph passed away in 1971.

She graduated from Fair Haven Union High School in Fair Haven, Vermont, always on the honor roll. She received her Associates of Arts from Green Mountain College and her Bachelor of Science from Castleton State College. She taught for 39 years at both the Fair Haven Grade School and the Clarendon Elementary School. She was endlessly curious and had a deep love of learning that lasted her entire life.

When Judie was introduced to Arthur Otis Lawry it quickly became clear that she had met the love of her life and her true soulmate. They were married on September 3, 1977, and moved to a house in Shrewsbury, VT where they had three sons and spent many wonderful years together until Arthur passed away after a short illness on July 16, 1994.

Following Arthur's passing, Judie remained unmarried, deeply cherishing the time spent and memories made with him. She was a strong, independent, loving, and intelligent woman and she poured her heart, time, and effort into continuing to raise her sons by herself. Judie knew how to enjoy the little things in life. After her retirement from teaching in 2013, she took a lot of pleasure from hearing about the adventures of her sons and their families, including her beloved grandchildren. She was an avid reader, she enjoyed birdwatching, relaxing with her cats Bernie and Michael, doing her crossword puzzles, and she could give us all a run for our money at Jeopardy.

In 2017 Judie bravely fought and won a battle against cancer. Despite this, and several other hardships throughout her life, she never lost her positive spirit, her genuine optimism, her sense of humor, or her infectious smile. She was an inspiration to us all. She will be missed.

Judie was predeceased by her husband Arthur, her mother and her father. She is survived by her children Arthur (Pita), Daniel (Sandra), and Tristan (Allison); her beautiful grandchildren Eli, Nina, Gerard, Colin, Lucas, Brock, and Winry; her cousins Ann and George (Carolyn); as well as numerous other family members, friends, and neighbors who cherished her.

A funeral service was held on July 6, 2023. In lieu of flowers, the family requests that donations be made to the ALS Association at <https://www.als.org/>

~The Family of Judie Lawry



## SHREWSBURY VOLUNTEER FIRE DEPARTMENT

Storms and flooding dominated the past month. The Fire Department was prepared. As the main storm neared, Chief Phil Severy texted members: "we will be on standby for the road crew if things start going sideways." As the waters rose, members indeed assisted the town highway department by monitoring Shrewsbury's many back roads to locate and help minimize damage caused by the storm. Safety Officer Bob Snarski and Captain Al Ridlon opened Cuttingsville Fire Station to house those whose homes in the village were flooded. As the day wore on, SVFD members dealt with a leaking propane tank on the bank of the Mill River near Spring Lake Road. That was a potentially explosive situation fortunately diffused.

Concerned neighbors join the Fire Department because they want to serve their community in times of need. SVFD members continued to assist the Town Highway Department in the days after the waters had receded, to make Shrewsbury's roads passable again as soon as possible. Thanks to our hard-working Road Commissioner Jamie Carrara and his team for their superb work for the community.

In other news: On July 19 Shrewsbury responded to a structure fire on Cold River Road in Clarendon, providing mutual aid to CFD. Calls earlier in the month included responses to downed power lines on Cold River Road and a tractor trailer crash on Route 103. Volunteers were tied up for several hours on all these calls.

Even when there is no emergency, there is work to be done. This past month "dry hydrants" around town were tested to make sure they will supply water when needed. Our fire trucks were taken to Earle's for annual maintenance and inspections. Your Fire Department wants to be ready when we are needed.

SVFD Junior Firefighter Ethan Severy recently spent a week attending the Vermont State Firefighters Association Cadet Academy in Pittsford. This is what Ethan had to say about the experience: *"The academy overall was pretty fun. It was great seeing and meeting other cadets that I've never seen or met before and finding out where they're from. Some from near and some from far departments. For trainings we were taught how to build a fire line for wildland fires, we were taught how to properly use a Thermal Imager, we visited Station 2 of Burlington City Fire and trained with them, we also visited the Williston Dispatch center, we got our CPR and First Aid certifications, we learned forcible entry, we learned how to properly search a building and rescue fallen firefighters, and we had a Q&A with a paid firefighter. It was also cool that we had a special guest for each of our training sessions. For thermal imaging we had the Shelburne Chief, for the Q&A we had the chief for Barre City. A couple nights we also had some competition periods where we did a relay race against other companies."*

That concludes our report for this month. Be smart and stay safe. ~Submitted by Barry Griffith, SVFD

## Is your property in a flood-prone location? Consider selling it for use as a future public open space

Your town may be able to purchase your property “as is” and convert it into open green space for the public. **Funding is available for voluntary buyouts at full-market value of properties at high risk of flooding.** Talk to your Town Manager/Zoning Administrator or Vermont Emergency Management (VEM) (<https://vem.vermont.gov/funding/mitigation>) to learn more.



**VOLUNTARY** Buyouts are completely voluntary and property owners can opt out of the process at any time until closing.

**FULL MARKET VALUE** Property owners receive full market value, as determined by a third-party appraiser. Property owners not satisfied with the appraisal can appeal and hire their own appraiser or choose to withdraw from the process.

**EXPENSES PAID** Grants for buyouts also **cover the costs of the appraisal and closing expenses.**

**ELIGIBLE PROPERTIES** Whether residential, commercial, developed, vacant, listed or not currently on the market, your property may be eligible. Properties must be at high risk of flooding, but don't need to be previously damaged.

## Help Make the Community More Resilient!

Buyouts not only get flood-prone properties out of harm's way but help make the whole community more resilient. **Towns are required to maintain acquired properties as public open green space** once all structures have been removed or relocated. These open green spaces can then serve as floodplains, helping to protect the whole community. (These spaces often also serve as pocket parks and/or provide river access to the public!)



## Process / Timeline

When property owners and their town are interested in a buyout, the town applies for a buyout grant. The grant review process can take anywhere from a couple of months to a year. The appraisal occurs after the grant is awarded. The property owner is free to withdraw from the process at any time until closing.



**Applications must be submitted before  
July 31 so act now!**

Contact your Town or Village Manager or VEM ([DPS.HazardMitigation@vermont.gov](mailto:DPS.HazardMitigation@vermont.gov)) to learn more!

**CONTACT LAURA BLACK (802-770-2084), ADRIENNE RAYMOND (802-492-3578) OR  
SELECTBOARD FOR MORE INFORMATION)**

## Shrewsbury Volunteers

This recent horrendous flooding is a reminder that you never know when we all need to rely on our neighbors to help each other out when a disaster hits. In the first few days after the storm, masses of volunteers were almost immediately rolling up their sleeves and helping neighbors haul wet items out of their basements, helping scrap up sludge, hauling away damaged furniture and appliances, packing away contents that could be saved for a drier day, and cutting up trees and tangled driftwood and removing it. Those with dump trucks and tractors and chain saws and skidders generously shared their equipment and time. Many hands did make fast work and lifted spirits of those needing a hand as well as those offering it! Creating a data base of those willing to help from the last storm made start up faster and we would like to add more names of those who might want to volunteer in the future.

**WANT TO HELP?** If you are not already on the volunteer list but would like to be notified when there is a need in town, please email [vtzippity@gmail.com](mailto:vtzippity@gmail.com). Let us know what kind of help you are able to offer your neighbors and if you have equipment that might be helpful. Please make sure to leave your name, email, and phone. We will respond back to let you know you are on the list.

**NEED HELP?** If you need help with something, please send an email to [vtzippity@gmail.com](mailto:vtzippity@gmail.com). Let us know what you need. We will do our best to match you with someone(s) who has time to help. Please make sure to give us your name, email, phone, your address, and any specifics about the kind of help you need. ~Submitted by Louise Duda

## Significant Damage to Property?

For folks who may have suffered significant damage to land or property you can apply for a tax abatement. The board of abatement meets in December to consider the applications. We ask that you put your request in writing and get it to the Town Office, to the attention of Town Treasurer prior to December.  
~Linda McGuire, Town Treasurer

## Flood Resilient Communities Fund

is seeking applications for assistance to flood-vulnerable properties, including property buy-outs; before July 31

For information, contact  
Laura Black (802-770-2084) or  
Adrienne Raymond (802-492-3578)

## CCC Road Closed Closure

The gates on the CCC Road have been closed on both the ends of North Shrewsbury and Route 100.-The road is damaged in several locations especially on the steep section on the Plymouth end. It is not travelable or safe in its current condition. Fortunately, the improvement work done since Irene on the road to make it more resilient has helped and the damage is not as bad as was experienced during Irene. We are still assessing damage to state lands infrastructure and do not yet have a timeline for repair. We will communicate that information to the town as soon as it is known. We will be working with our leadership and potentially FEMA for repair.

~Lisa Thornton , Vermont Agency of Natural Resources

## Neighbors helping neighbors and the Road Crew Clean up!

Photos by Rich Biziak, Louise Duda, Lavinia Seide, Tim Stout



## Rushing Waters

### A Front Row Seat To The Flooding of Wally's Corner

My husband and I moved to Cuttingsville nearly 2 and a half years ago. In that time, we've changed our careers, joined community organizations, and had our first baby. And through all of that, we've found solace being in our home, watching the surrounding mountains and river from our porches. On July 10th, 2023, there was no solace watching with my newborn son, Ellis, as the river rushed, gushed, and overflowed, taking debris and parts of our family business with it.

Starting at 7am, we kept a close eye on the storm. Overnight there were reports of flash flooding, so we knew something catastrophic could be on the horizon. At first look, the riverbank was already at ground level and the current was moving quickly. I was nervous and as a precaution, got go-bags ready should we have to evacuate. Closures were happening all around our home on highway 103, but by 2:30pm, the water was receding. Ellis and I went to our 2nd floor porch to keep an eye on the river hoping it would continue to stay below the bridge. However, that's not what happened.

By 5pm, my husband Bob returned home from work and we needed to make a decision; leave for higher ground or stay in place. We decided on the former, but only a few minutes later, the river rose to unsafe levels and was now crashing against the Cuttingsville Bridge. We began to move our go-bags to the car when all of a sudden, we watched as the store's flower boxes disintegrated into the rushing waters, the store itself began to flood, and we lost any visible roads to the flowing waves. It was terrible. It was clear we couldn't leave, so we hunkered down. We had plenty of water, food, and downloaded Netflix shows to last us a few days, so we waited. We watched as my propane tank detached from the shop and floated down the river, as well as my tool shed lift from it's place behind the store and settle in the center of our parking lot. And we knew from my security cameras that the water had risen at least 4ft inside the shop itself. We felt helpless as our neighbors lost their power, basements got flooded, and wondered what awaited us in the aftermath.

The next day was rough. I knew it was going to be wet inside, but I was unprepared for the mud, silt, and general upheaval of everything. Shelves were tossed to the floor with inventory floating in the muck. Large recliner chairs had been thrown about and were lying on their backs on the opposite side of the room. Due to the storm, we lost 30%-40% of our inventory, had extensive damage to the interior and exterior of the building, our gardens that offered our customers fresh bouquets and dried flowers for crafts throughout the year were completely washed out, and our parking lot will need to be leveled and graveled.

The silver lining and what surprised me most of everything that we experienced was the generosity and kindness of our neighbors from Shrewsbury, Mt. Holly, Wallingford, and beyond. By the afternoon of the 11th, without being asked, there were volunteers who came to help clear out inventory, clean out the mud, and offer any assistance they could think of to get us ready for the next steps. I cannot give enough thanks to everyone who has offered us a hand. I didn't know where to start or how I was going to go about cleaning while also caring for a 2-month-old, but you all did so much and worked tirelessly to get us to a better place. From the bottom of my heart, thank you.

As of today, all viable inventory & storage are in our house, a remediation crew has cut out the wet sheetrock and disposed of all leftover debris, and we are looking for contractors and HVAC specialists on what needs to happen next. There's still a long way to go, but we're staying optimistic and positive that Wally's Corner will one day be back up and running, offering a unique array of gifts & community events such as our monthly craft nights. We hope you'll stop by when our lights are on and our flags are flying high once more!

~ by Hallie Knudsen

## Eyewitness View of Flooding Event!

Photos and captions by Chris Clarke



*Tree dam removal from the bridge was a mental relief!*



*It was a guarantee mole elimination from lawn and gardens...but not the chipmunks! The wood pile survived!! Moral: stack your wood well and level.*



*The basement after the water receded to a few inches*



*Water down a foot in the basement with another four feet to go. Did you know washer machines float?? They were like bumper cars bouncing off each other!*

# SHREWSBURY SINGERS

*present*

## *Singing on a Sunday* *Afternoon*

*Sharing songs we love to sing,  
old & new, from here & there*

~~~~~

Sunday, July 30th @ 3:00PM
Shrewsbury Meeting House

~Free Will Offering~

~Collecting food items for the Shrewsbury Food Shelf ~

~~~~~

Information: Licia Gambino  
(802) 492-3792 [hamgam@vermontel.net](mailto:hamgam@vermontel.net)



### BURN PERMITS

If you are plan to burn brush you **MUST** call for a burning permit. **Contact Forest Fire Warden Kevin Brown 802-345-8668 or Deputy Forest Fire Warden Al Ridlon, Jr 802-282-3642.** The landowner is responsible to control a brush fire, ensure you have proper tools, water supply, and people to assist in containing the fire.



### Shrewsbury Day Parade needs Veterans!

We would like Veterans to march in  
the Shrewsbury Day Parade,  
September 17.

Contact Linda Fontana 802-492-2818

*Isn't it your time to Thrive?*  
*Celebrating 23 Years!*

**Thrive Center**  
OF THE GREEN MOUNTAINS

**Chiropractic Care • Therapeutic Massage**  
**Holistic Health Education**  
**Stress Reduction Products**  
**Nutritional Supplements • Coaching**

**802-446-2499**

68 South Main Street • Wallingford

[uthrive@vermontel.net](mailto:uthrive@vermontel.net) • [thriveinvermont.com](http://thriveinvermont.com)



**WIRENUTS  
ELECTRICAL  
LLC**

[bbates@vermontel.net](mailto:bbates@vermontel.net)

**REBECCA BATES**  
**LICENSED**  
**ELECTRICIAN**  
802-492-3406  
802-353-4376



## NEW BATTERY RECYCLING GUIDELINES

New guidelines have been implemented at the Transfer Station for cell phones, rechargeable and single use batteries under 11 lbs each. Jeremiah shows how EACH battery is to be (1) placed into the provided individual plastic bag and (2) deposited into the battery box which can be found on a table to the left as you enter the Reading Room.

Paul and Jeremiah are both required to take annual training in battery recycling protocol and can answer any questions you might have regarding the process.

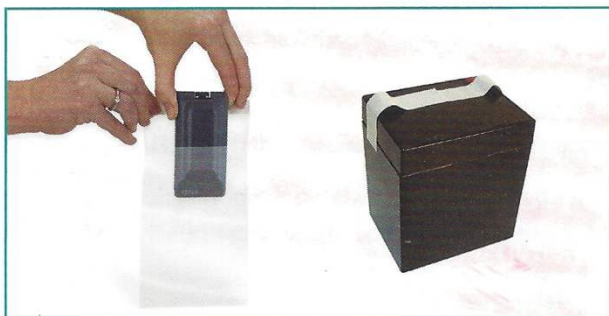
## DO NOT THROW BATTERIES IN THE TRASH OR CURBSIDE/BLUE RECYCLING BIN

Improper battery disposal can cause fires at Vermont's recycling centers, waste facilities, and garbage trucks, causing damage and putting Vermonters lives in danger.



**COLLECT**  
BATTERIES & CELLPHONES

### Bag it or tape it



Place *each* required battery or cellphone in an appropriately sized bag. If no bags are available, cover the positive terminal with duct, electrical or another non-conductive tape.

### Step 5: Seal it



Peel away backing from adhesive and fold flap over.

### Step 6: Drop it



Deposit sealed bag or bags into the box. Write the accumulation start date on the back of the box at the time of first use.



# TAP TO TABLE

AN AUTUMN MARKET

Fun 🍁 Food 🍁 Music 🍁 Artisans 🍁 Beer

**SUNDAY OCT. 1 2023**

**10am-4pm**

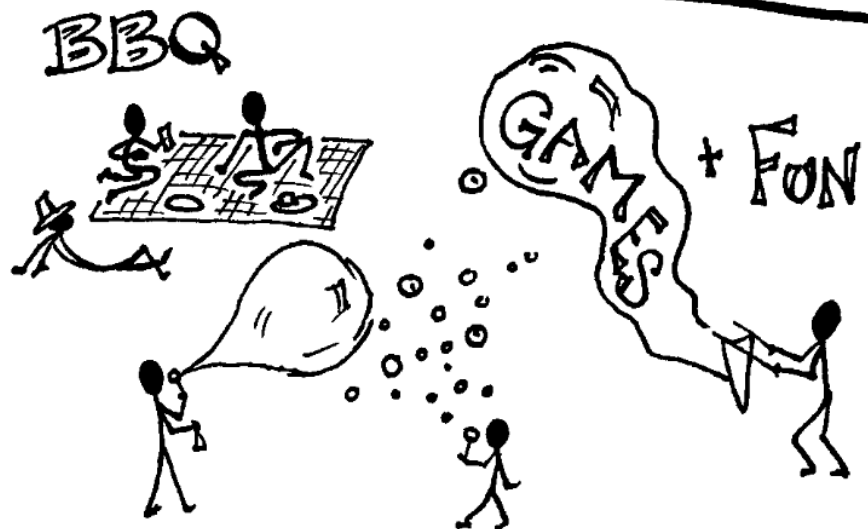
Route 103 - Cuttingsville, VT

*we can't wait to see you there!*

2023  
come gather

# SHREWSBURY DAY

Sunday, September 17 ♥ Rain date: September 24



~Artwork by Ali Wilson

# SHREWSBURY DAY

**Sunday, September 17, 2023**

*(Rain date Sunday, September 24)*

**Red White and Blue ~~ Wear or Wave!**

**(or wear a Shrewsbury Day Tee shirt!)**

## **10:00 - 11:00am – MUSIC**

DJ Brett Myhre in front of Maple Crest Farms

(No thru traffic after 10:45am)

*Park early and let DJ Brett entertain you!*

## **11:00am – PARADE**

Parade starts at 11am at the top of Russellville Road and turns left onto Lincoln Hill Road and proceeds thru Shrewsbury Center ending up behind the Meeting House—a long, short parade featuring: Shrewsbury Veterans, Shrewsbury Fire Department, antique cars, local businesses and organizations, and Shriners will bring their Legion of Honor, Bessie the Camel, Cars and Choppers, Patrol and Drum

## **12:00 noon – KIDS' EVENTS**

Tattoos, Rainbow Hair Coloring Sticks, Razzle Dazzle Nail Painting. Also, Giant Jenga, Connect 4, Cornhole, Ring Toss, Pizza Box Relay Shuffle, Bean Bag Toss

## **12:30pm – BARBECUE**

**(By Donation)**

Green Salad

Chili and Hot Dogs, in various offerings:

~~Chili - Chili Dogs - Hot Dogs - Taco Shells~~

Lemonade, Chips, Maple Popcorn and Ice Cream

## **12:00 noon ENTERTAINMENT**

DJ Brett Myhre –Bring your dancing shoes!

## **1:30pm – KID'S EVENTS RESUME**

### **50/50 Raffle!**

(You do not have to be present to win!)

### **Fun For Everyone!**

All festivities take place outdoors at the Meeting House following the Parade.

The Meeting House will be closed to the public.

**Bring a blanket or lawn chairs to sit on and ENJOY!**

**No Dogs or Horses**



**SHREWSBURY DAY  
TEE SHIRT SALE**

**\$5 Kids  
\$10 Adults**

"COVID Memorial T-Shirts"

The Shrewsbury Day That  
WASN'T 2021

## SHREWSBURY MEETINGHOUSE OUTDOOR CONCERT SERIES

Your free will donation is appreciated to support the musicians and the Meetinghouse. For more info, or to join our email list for updates, contact Vicky Arthur at 802 492 3649 or email [singtolive57@gmail.com](mailto:singtolive57@gmail.com)



### UnReel

**Friday, July 28 @ 6 pm**

Graham and Camille Parker have long provided fiddle, mandolin, and stirring vocals for Vermont's favorite Celtic band, Gypsy Reel. Now they've teamed with singer-songwriter and storyteller Jon Clinch for an all-new project — UnReel. The band focuses on original songs, traditional material, and classic Americana. And for this event, they'll be joined by percussionist and shantymen Reagh Greenleaf, Jr. on vocals and bodhran. With deft guitar work, sweet fiddle, impeccable harmonies, and infectious rhythms,

**Food provided by Marble Valley Kitchen**



### THE PANHANDLERS

**Friday, August 18 @ 6 pm**

*(raindate Sunday, August 20)*

The Panhandlers have been delighting audiences around Vermont and New Hampshire for more than two decades. Come tap your feet and sway your hips to the sound of calypso, pop, reggae and samba as Vermont's largest steel band performs a mix of favorite tunes from the islands and beyond.

**Food Vendor: Gamebird of Ludlow**



### SPINTUITION

**Friday, September 1 @ 6pm**

*(Indoors if it's raining)*

A New England based folk band that blends creativity and tradition into tight harmony and joyous rhythms. Featuring Shrewsbury's own Silas Hamilton (Guitar, Fiddle, Feet), Willy Clemetson (Fiddle, Feet), and Samuel Foucher (Accordions). Presenting a compelling mixture of spicy new tunes and glorious old songs in the styles of trad-Irish, French-Canadian, Old Time, and beyond.

**Please join Spintuition and caller, Licia Gambino, for a short Community Contra Dance right after the concert!**

**Open to all ages and levels of experience.**

**Food provided by La Catrina and friends**

*In partnership with VT Farmer's Food Center, delicious local meat or beans with homemade arepas and fixings. Proceeds will go to benefit VFFC's Rutland County Eats food access program which provides restaurant prepared meals with local food to those in need in our community.*



**STONE'S THROW  
FARMSTEAD**  
SHREWSBURY, VT

*Our farmstand  
is open!*

*flowers & veggies*

LIVE INVENTORY ON OUR WEBSITE  
[WWW.STONESTHROWFARMSTEAD.COM](http://WWW.STONESTHROWFARMSTEAD.COM)

*open 7am-7pm everyday*

120 WILMOUTH HILL RD. SHREWSBURY

**BOTTLE DRIVE**

*FUNDRAISING*



**The Shrewsbury Mountain School PTO**

**Save the date**

**Saturday, September 9 &**

**Sunday, September 10**

Please contact **Angie Sharrow at 492-2092** if you would like to be added to the list.

We will give you an estimated pick-up time and come for your donations.

There is also the option of visiting Olivia's Market Redemption Center and donating to our account.

**Thank you so much for helping to support our school activities!**

# SHREWSBURY LIBRARY

Library News Submitted by Joan Aleshire

## LIBRARY & FOOD SHELF HOURS

Monday 10 am to 12 pm

Tuesday 7 pm to 9 pm

Wednesday 10 am to 5 pm & 7 pm to 9 pm

Thursday 7 pm to 9 pm

Friday 10 am to 12 pm

Saturday 10 am to 12 pm

**Please stay away if you're not feeling well, and wear a mask if you need to protect yourself and others.**

To search the Library Catalog, put a hold on a book or DVD in our collection, and get the latest Library news, please go to: [www.shrewsburylibrary.org](http://www.shrewsburylibrary.org). Also please see our web site for information on the Seven Days Community Challenge!

We're thankful that the Library was spared the flooding that roared through Cuttingsville, and damaged neighbors' homes and businesses. We lost only phone and internet service. As of this writing, it hasn't been restored, but should be soon, thanks to LISA SHARROW's phone calls. Our Library Director, DONNA SWARTZ, figured out a way to check books in and out, and our loyal staffers showed up for shifts, so we stayed in business. Many thanks to all!

MANY THANKS to SANDGLASS THEATER for a magical performance of "Oma" at the Russellville Schoolhouse! Puppeteers Shoshana Bass and Jana Zeller enchanted an audience of all ages in this program sponsored by the Library and SAGE.

TREES QUILT RAFFLE TICKETS are going fast! Stop in and buy some before the drawing at the STREET DANCE on SATURDAY, AUGUST 5.

### Coming Events:

Saturday, August 5 @ 5:30pm: DOG DAYS DINNER & STREET DANCE with THE SHREWSBURY COMMUNITY BAND @ The Meeting House. See our ad on this page.

Friday, August 11 @ 7pm: Stephen Abatiell will present a program on Vietnam Village, the international organization that aids victims of Agent Orange.

### Continuing Programs:

Sunday, August 13 @ 3:30pm: WRITERS' GROUP. Please join us if you have poems, short fiction or journal entries (1000-word limit) to share. Contact Joan Aleshire ([joanaleshire@vermontel.net](mailto:joanaleshire@vermontel.net)) or Penelope Weiss ([pw9@earthlink.net](mailto:pw9@earthlink.net))

Sunday, August 20 @ 4pm: FAMOUS BOOKS BOOK CLUB. We're reading Nathaniel Hawthorne's riveting classic, *The*

*House of the Seven Gables*. If you need a copy, please contact Joan: [joanaleshire@vermontel.net](mailto:joanaleshire@vermontel.net).

Sunday, August 27 @ 7pm: SCIENCE BOOK CLUB. *Owls of the Eastern Ice*. Please contact Margery Salmon if you need a print or e-book: [salmonm@vermontel.net](mailto:salmonm@vermontel.net).

### New Books include:

- \* *Better Living Through Birding: Notes from a Black Man in the Natural World* by Christian Cooper.
- \* *This Is Happiness: A moving new novel* by Niall Williams.
- \* *His Majesty's Airship: the Life and Tragic Death of the World's Largest Flying Machine* by S.C. Gwynne.
- \* *I Am Homeless If This Is Not My Home: A new novel* by Lorrie Moore.
- \* *Call Us What We Carry: Poems* by Amanda Gorman.
- \* *The Book of Charlie: Wisdom from the Remarkable American Life of a 109-Year-Old Man* by journalist David von Drehle.
- \* *The Bill of Obligations, The Ten Habits of Good Citizens by American Diplomat, Richard Haas*

## Shrewsbury Library's

## Dog Daze Dinner

&

## Street Dance

### Saturday August 5th

Featuring the

### Shrewsbury Community Band

At the Shrewsbury Meeting House

5:30pm-DINNER 6:30pm DANCE

#### Dinner & Dance

13 & up \$10    Children 5-12 \$5

#### Just the Dance \$5

Bring your dancing shoes and a chair

## LOVE TO READ TO KIDS? THE LIBRARY WANTS YOU!

We want to build a team of readers of all ages to read to kids of all ages at Story Hours on Fridays or Saturdays at the Library. We also welcome young readers to "Read to Faith the Dog."

If you're interested, please contact:  
Donna ([donnaswartz44@aol.com](mailto:donnaswartz44@aol.com)) or  
Joan ([joanaleshire@vermontel.net](mailto:joanaleshire@vermontel.net))

# Shrewsbury Historical Society

www.shrewsburyhistoricalsociety.com

## Museum's copies of artist John George Brown's work

In the years 1899-1900, celebrated painter of genre scenes in America, John George Brown, came to Cuttingsville in the summers to paint several scenes of rural Vermont life.

Brown would stay at the stately Union House which had been renovated featuring rooms for 15 guests at \$5 per person per week. Horse and carriages were kept behind the large, white hotel, standing near the Mill River.

Brown would set the scenes for some of his paintings in a barn across the way. He used folks who lived in the area, among them Peter Lovejoy, John Smalley, and Mrs. Boutwell.

When Brown completed the picture entitled "Cornered", Mr. Smalley took a look at it and was somewhat troubled by what he saw, and informed the artist that it was a "very good picture" but "it is not true to life, for Mr. Brown by gosh sir, Peter sir, never beat me in a game of checkers in his life, sir!"

One of the founders of the Shrewsbury Historical Society, Nancy (Anne) Spencer researched Brown's works and was able to purchase copies of the above-mentioned paintings in galleries. The original painting of Mrs. Boutwell is unknown. She is shown working in her apartment above the stables that once stood beside the Olde Brick in the village busily tying one of her many handmade quilts that she often sold to the residents of Union House.

Unfortunately, the stately Union House and several neighboring homes were burned to the ground in 1903. A second building took its place but never as a hotel. It eventually became home to the Stewart's Ford Agency

## Historical Society information: Past, Present, Future:

In June, the Historical Society presented a copy of our town's history book, "Shrewsbury, Vermont - Our Town As It Was" by Dawn Hance to each graduating student in 6th grade at Mountain School.

On July 22, the Laurel Glen Cemetery Association sponsored the cleanup of the cemetery by VOCA (Vermont Old Cemetery Organization) and volunteers. The Bowman Mansion was opened at noon, and the Historical Society offered refreshments for workers in museum at noon.

Sundays 1-3pm: The Historical Society Museum is now open up to and including the last Sunday in October.

August 20: Meeting of Society at 3pm at the museum

September 17: Shrewsbury Day featuring parades, music, food, games.

October 15: Historical Society Program featuring Marty Podskoch, author of CCC Camps in Vermont, to be held in the Town Hall at 1pm, which will highlight Northam's camp in Shrewsbury, ca. 1930s.

## Notice:

The Acquisition Committee would like to advise that they cannot accept any new acquisitions, except for photos or paper items pertaining to Shrewsbury until we can find room to hold more objects.

## Dues are due

Annual dues for the current year are

\$10 for Single

\$15 for Family

\$30 for Contributing

\$125 for Life Members, either single or couple

Please remit check made payable to the Shrewsbury Historical Society and mail to:

Treasurer Catherine Carrara

2544 Northam Road,

Shrewsbury, VT 05738

Membership dues help the Society in protecting artifacts donated with acid-free boxes and special wrapping papers, etc. Dues paying members are also able to vote on various subjects held at regular meetings. The Society welcomes all to visit and learn all about what we do.

Please come to visit the Museum on Route 103 in the heart of Cuttingsville; open Sundays from 1 to 3pm.

*Submitted by Ruth Winkler*

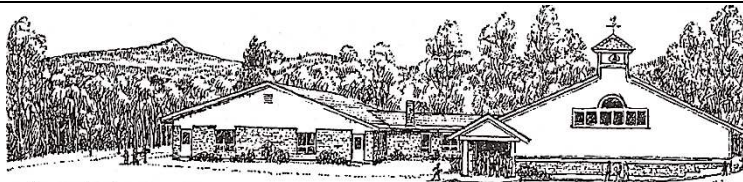


## Shrewsbury Historical Society Sign Repaired

John Elwert took down and repaired the sign for the Historical Society which was in terrible shape and about ready to fall apart.

Thank you, John, we are very grateful for your time and effort!

*Submitted by Liesbeth van der Heijden*



## SHREWSBURY MOUNTAIN SCHOOL NEWS

Hello SMS Families and Community,

I hope you are having a summer filled with time with family and friends as well as fun activities like swimming, hiking, beautiful sunsets, campfires and yummy s'mores! I hope your kids are starting to feel that familiar excitement that comes with a return to learning together. The SMS staff is working incredibly hard to make sure this return to school is AWESOME!

### Important Dates:

8/28: Back to School Meet and Greet with our Teachers 9-10am  
8/30: First day of School!  
8/30: After School Program Begins  
9/4: Labor Day - No School

### Updates and information:

**Back to School Meet and Greet:** Our SMS homeroom teachers would like to welcome their students to their classroom and make a personal connection before the school year begins. The school doors will open at 8:55am. Please make sure to arrive by 9:45am if you would like to participate, so our teachers can get back to their preparations for the first day of school promptly at 10am.

**First Day Share!** One of our favorite parts of the first day of school is seeing the big smiles, favorite outfits and summer growth of each kiddo as they walk into our school. In order to share that joy this year, I am asking any of you who would like to take a first day of school picture of your child(ren) and email it to me. I will put together a slideshow for our email list and facebook page so we can all celebrate together.

**Special project with Ms. Cimonetti:** (optional!) Hi Students! I am creating a fun bulletin board at school.

If you would like to help me make it colorful and special, please follow these directions:

- 1) Draw a heart on a piece of white paper. (Make sure it isn't bigger than 6 inches tall or wide)
- 2) Write your name in the middle of the heart.
- 3) Color around your name however you wish.
- 4) Cut out your paper heart and give it to me.

You can send me your special heart creation by snail mail, give it to me at the "Back to School Meet and Greet" event or the first three days of school! Thank you! ~ Ms. Cimonetti

Coming soon: School Calendar, Student/Family Handbook, Bus Schedule, Letters from Classroom Teacher with supply lists and After School Program Information.

I hope that you enjoy the remaining days of summer and I look forward to seeing everyone soon!

If you have any questions or concerns, please contact me at 802-786-3995 or at [kcimonetti@millriversschools.org](mailto:kcimonetti@millriversschools.org).

~Kristin Cimonetti, Principal, Shrewsbury Mountain School



## Helping Seniors as their needs change in Mount Holly, Shrewsbury and Wallingford

**Interested in becoming a volunteer?** We think you'll find it very rewarding! Some of the ways you can help:

**Provide a ride:** Our volunteers provide rides for our members using their own cars. Members request transportation, in advance, to medical and dental appointments, physical therapy, as well as some of our planned social events.

**NOTE:** All drivers need to provide proof of insurance and a driver's license.

**Run an errand:** Some of our members may feel uncomfortable or be unable to do grocery shopping or pharmacy pick-ups. In that case, our volunteers can pick up & deliver orders previously arranged via Insta-Cart, or with prepayment for pharmacy items.

**Provide simple home maintenance tasks:** Simple tasks such as changing light bulbs, hanging pictures, inserting/removing air conditioners, changing out seasonal outdoor furniture, are often insurmountable to some of our members. They so appreciate our volunteers who are willing to help them out with tasks that do not require major work.

**Check-in calls:** Upon a member's request, daily or frequent wellness phone calls to assess a member's current condition. Contact us via email to let us know how you would like to help, but don't limit yourself to the areas listed above. We plan to start operations by the beginning of 2024.

### Direct your email by town to:

Mount Holly: to Kathy Leber [kleber@vermontel.net](mailto:kleber@vermontel.net)  
Shrewsbury: to Linda Fontana [lafhaha\\_2000@yahoo.com](mailto:lafhaha_2000@yahoo.com)  
Wallingford: to Sandy Eddy [seddy@vermontel.net](mailto:seddy@vermontel.net)



## THE NEW LEARNING PROJECT CHOOSING TO EXPERIENCE OUR POTENTIAL

**MUSIC LESSONS -- Guitar , Piano , and more**  
**RED CROSS COURSES -- First Aid, CPR, Lifeguarding**

**SWIMMING INSTRUCTION**  
(More services at website)

**STUDIO IN CUTTINGSVILLE VT**  
[www.TheNewLearningProject.com](http://www.TheNewLearningProject.com)  
[TheNewLearningProject@gmail.com](mailto:TheNewLearningProject@gmail.com)  
802.492.3208

**Marcos Levy**  
Instructor with over 30 years  
of Experience

## WANTED

## Room(s) or Apartment for Rent

Shrewsbury friends, I am looking to rent a room or two with kitchen and bathroom access, or a small one-bedroom apartment in or near Shrewsbury. Ideally available at least by the end of September. If you or anyone you know has something available, please contact:

**Séamus Hartigan**  
[seamushartigan13@gmail.com](mailto:seamushartigan13@gmail.com)

## The Shrewsbury Community Church



*Compiled by Sue Ransom-Kelley*

We've been enjoying summer services at the Northam Church! Special Thanks to Connie and John Cioffi for planting and tending the lovely flower box all summer! It is a joy to see the flowers they planted in memory of Connie's mother Anna M. Francis.

All are welcome to visit! The Christian Church in North Shrewsbury was founded in 1822 and little has changed in this beautiful historic building since it was built. Come and hear an uplifting message and the beautiful Etsy pump organ.



The pulpit was built by Clarence J. Poore and presented to the church in 1896.

The Shrewsbury Community summer church is located on the Cold River Road next to the town office and just around the corner from Pierce's Store.

### Knowledge Is Not Enough by Rev Kenneth Samuel

The story is told of a young pastor who was called to serve a prominent church. After the new pastor's first sermon, the congregation was overjoyed. "We have an outstanding preacher!" everyone exclaimed. The next Sunday the young preacher stood to preach, he read the same Scripture and delivered the same sermon he'd preached the previous Sunday. The reception of the congregation was rather cool this time. The congregants said that he'd probably gotten a bit confused, given all the excitement of his new pastorate. The following Sunday the young pastor stood to preach, he read the same Scripture and preached the same sermon he'd preached the previous two Sundays. At that, the members urged a few of the church officers to meet with the new pastor immediately! "We like the sermon you've been preaching Reverend, but we've heard it three Sundays in a row now. When are we going to hear a new sermon?"

The young pastor responded: "I'm glad you like the sermon I've been preaching. When our church starts living that sermon, I'll move on to a new one."

It's often said that when people know better, they do better. But we all know better than that. People know a lot of important things that never get applied to their everyday lives. Our heads are filled with amazing principles that many of us hardly ever put into practice. The demand for more knowledge, new information and novel sermons may actually do more to message our vanity than it does to improve our character.

### Shrewsbury Community Church Calendar

- Sunday, July 30, 10:30 am. Worship Service led by Vicki Disorda @ Northam Church.
- Sunday August 6, 10:30 am. Worship Service led by Jane LoBrutto @ Northam Church.
- Sunday August 13, 10:30 am. Worship Service by Vicki Disorda @ Northam Church.
- Sunday August 20, 10:30 am. Worship Service led by Jane LoBrutto @ Northam Church.
- Sunday, August 27, 6:00 pm Evening Vespers Service led by Rev. Donna Jackson @ Northam Church.

Tuesday, August 29, 12:00 pm. Prayer Shawl Group upstairs at the Meeting House. All are welcome! Bring a bag lunch if you would like to. Dessert, coffee and tea will be served. Don't know how to knit or crochet? Please come and we will teach you!

### Community Food Shelf

Free Community Food Shelf at the Library in the front entry way. Those in need are welcome to help themselves any time the Library entryway is open. Limited hours are: Mon 10am-12noon; Tues 7-9pm; Wed 10am-5pm and 7-9pm; Thurs 7-9pm; Fri 10am-12noon; and, Sat 10am-12noon.

We have our additional Summer Food Shelf on the side porch at Pierces Store in North Shrewsbury. Those in need are welcome to help themselves.

**Food Delivery and Assistance** If you are unable to get to the Food Shelf at the library in Shrewsbury, we will deliver groceries to you. If you need items which are not available on the shelf we can provide grocery gift cards. Call Karen at 802-558-5991 or Sue at 802-779-4825 or 802-492-3738.

### Community Needs

- Wedding, Funeral or Memorial Service Requests: Contact Donna Smith 802-492-3367; or Sue Kelley 802-492-3738, 802-779-4825
- Community Helping Hand Requests: Contact Donna Smith 802-492-3367; Sue Kelley 802-779-4825, 802-492-3738; or Karen Lorentz 802-558-5991. Shrewsbury residents experiencing financial hardship. Assistance can be given for basic needs (food, heating, gasoline, etc). If you or a neighbor are in need, please let us know!
- Pastoral Care, Home, Hospital Visitation, Outreach Requests: Contact Roxanne Ramah 802-492-3675 or Ruth Kinne 802- 775-5318.



## SNO-BIRD NEWS

Well, July has been a very wet month! I cannot believe we are almost to August already! Our dedicated members have been out checking our trails. We have tread damage in some areas and must replace several old culverts. So far it looks like all of our bridges are OK, but we need to inspect the abutments a little more as they may need attention. To say the least, we were very lucky compared with other areas.

We cannot start any repairs at this time as the Federal and State land officials want us to wait for them to inspect the areas because there are FEMA monies involved. This was an unexpected weather event but, we will still have the trails up and running by this next season. When Irene came though it took over 260 man and equipment hours to repair the trails and it was later in the summer but we still got it done. If anyone has any photos of our trail damage send it to our smug mug page or to my email at [rarthurs604@aol.com](mailto:rarthurs604@aol.com). Our de-brushing is on our schedule when the time comes.

We took the speedometer out of the Tucker and sent it out for repair. We got it back and hooked it back up and everything seems to work fine. The rest of the Tucker maintenance will be starting in a month or two.

I hope to have some trail repair updates by next month. At this time, with it so wet, we are trying to protect the trails from further erosion so the only permission we have as a club is for motorized traffic that is for trail repair, not for enjoyment.

*Submitted by Roy Arthur*



It's a family affair these days at Rainbow Riding Center as we begin a new program called Strengthening Families Through Horses. The program pairs a child and parent (or caregiver) - each with their own horse--in a series of lessons that provides them with the tools to foster a healthy and mutually satisfying relationship they can carry forward.



Pictured: a patient Fonda waits as her young rider shows his instructor what he's feeling. In addition, our program for Military family continues to grow and more summer riders sign up for horsemanship lessons.

Please view our website: [rainbowridingcenter.org](http://rainbowridingcenter.org) and follow us on Facebook or Instagram @rainbow\_riding\_center.

Contact us at [programs@rainbowridingcenter.org](mailto:programs@rainbowridingcenter.org) or 802-236-2483 to inquire about our programs and lessons. For information about opportunities to volunteer with us contact [janetupton@rainbowridingcenter.org](mailto:janetupton@rainbowridingcenter.org).

*~Submitted by Janet Upton*

## BRANCH BROOK EXCAVATING LLC

Driveways / Harley Raking / Ditches and Drains /  
Land Clearing and Reclaiming / Stump Removal /  
Retaining Walls; New and Old / Ponds / Power, Gas,  
and Water Line Burial / General Dirt Work



Benjamin Turco

1269 Branch Brook rd

Mount Holly, VT 05758

Phone: (802)770-8964

[branchbrookexcavating@gmail.com](mailto:branchbrookexcavating@gmail.com)

## RIVERWOOD LAWN CARE, LLC

Fully Insured

Patrick Angstadt  
802.770.0433

[riverwoodlawncare@gmail.com](mailto:riverwoodlawncare@gmail.com)

**Mowing, Trimming**  
**Spring and Fall Cleanups**

**FREE ESTIMATES**

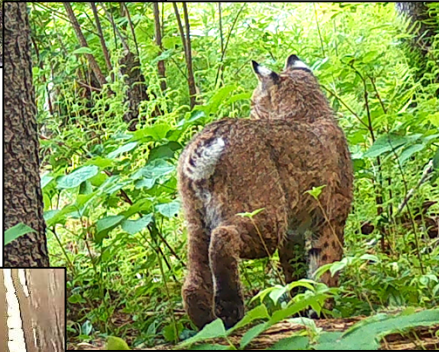


## Shrewsbury Conservation Commission Trail Camera Picture of the month



Our SCC cameras captured a bull moose with growing antlers and a cow at a nearby beaver pond. It looks like the cow may be carrying a calf!

A bobcat on the prowl was captured in the same area.



Linda Shelvey had a mama bear with 3 yearling cubs. Only the sow shows in the picture. The cubs trailed behind and each member of the bear family took a turn at readjusting the camera. This is why a metal box to protect your camera is a good investment!

Diane Jakobsen captured a yearling bear near Cold River. If you have a picture or track to share email Linda Shelvey [Lpurdyshe@gmail.com](mailto:Lpurdyshe@gmail.com)



Tiger swallow tail butterfly on Asclepias  
Photo by Judy.Seide Duca

## SAVE THE DATE!

**Saturday, September 2  
9:00am-Noon**

Location to be announced

## This is an Event You Won't Want to Miss!

It's widely known that some fungi are decomposers, but did you know that they can also eat plastic, clean up oil spills, hunt for prey, and enable trees to talk to each other? Join mycology educator, macro photographer, and author, **Meg Madden**, on a mushroom curiosity walk to learn more about the lives of these fascinating organisms. On this walk we will explore the woods and talk about the mushrooms we find along the way including what they are and how to identify them. Meg will also discuss the importance of community science, how you can contribute to Vermont's growing database of fungi species on iNaturalist, and share tips and tricks for taking scientific grade mushroom photos.



## Dance of the Moths

Come prepared to be awestruck and learn more about the life stages of Moths and then watch them dance under the lights against the darkening sky!

The SCC is so fortunate to have Lepidopterist JoAnne Russo here to share her

enthusiasm and knowledge about these important but under respected insects. JoAnne has been actively recording moth species in Vermont for over 15 years. She's helped lead the charge to record Vermont's many moths.

Moths are valuable pollinators and a food source for birds, bats and other wildlife. Only a small percentage of the 12,000 species in North America are destructive and most of those are not native but introduced. Join her to learn more about night-time lighting to attract moths, how to rear caterpillars, the fun of finding caterpillars at night with UV flashlights. She will also be bringing her favorite caterpillars and moth books along!



All ages welcome to view the  
**Dance of the Moths**  
**Saturday, August 11**  
**8:00pm**  
**at the Meeting House.**  
Rain date August 12, same time.

Bring a small flashlight and camera or cell phone for photographs! Questions? Contact Weezie 492-3327 or at [shrewsburyvtconservation@gmail.com](mailto:shrewsburyvtconservation@gmail.com)

# ENGEL & VÖLKERS®

In the aftermath of last month's devastating flood, we find hope in the resilient spirit of Okemo Valley's people. Though the flood brought destruction and challenges, we are witnessing the remarkable strength and determination that define us as a community.

Please reach out to us if we can help in any way.

If you are able, please consider a tax-free donation to the Disaster Relief Fund which is raising money for local businesses throughout the region.

Use the QR Code below, or visit:

[www.yourplaceinvermont.com/accepting-donations-for-flood-relief](http://www.yourplaceinvermont.com/accepting-donations-for-flood-relief)



## #VERMONTSTRONG

Okemo Valley Region: Andover, Baltimore, Cavendish, Chester, Grafton, Londonderry, Ludlow, Mount Holly, Plymouth, Shrewsbury, Weathersfield, Weston



126 Main Street, Ludlow, VT 05149 +1 802-975-0338  
[okemo.evrealestate.com](http://okemo.evrealestate.com)

©2023 Engel & Völkers. All rights reserved. Each brokerage independently owned and operated. Engel & Völkers and its logo are trademarks and service marks of Engel & Völkers Real Estate Group. All other trademarks are the property of their respective owners.



Sandglass Theater's presentation of "Oma" was wonderful! A full schoolhouse of old and young were captivated by the mastery of craft shown by Jana Zeller and Shoshana Bass. We have an interview with Shosh and Jana up on our YouTube channel that you can find here: <https://youtu.be/VncWhvYIc4>



Shoshana Bass and Jana Zeller at the Russellville Schoolhouse

Interview excerpt:

Jana: "What keeps me going now are shows like these where it's just such a wonderful back and forth between us playing for the audience and the audience playing their energy back to us."

Shoshana: "...We say in our theater there's a kind of a triad that it takes to animate a puppet. The Puppeteer, the puppet, and the audience, and the audience is a very essential part of that equation, of willing a story to life and investing all of their own excitement, associations, memories, and feelings, and the puppet can just contain all of it..." SAGE hopes to continue to welcome Sandglass back to Shrewsbury and share this magic.

SAGE and Shrewsbury Mountain School are still calling for volunteer help to keep the garden thriving this summer. Please contact us at [educate.sage@gmail.com](mailto:educate.sage@gmail.com) if you are interested in pitching in to water and weed. Watch our Facebook page for garden party announcements.

SAGE, Shrewsbury Agricultural Education & Arts Foundation, began in 2012 as a non-profit organization to promote traditional and innovative agriculture. We added support for the arts to our mission in 2020. We sponsor workshops, concerts, spoken word readings, and more in the Russellville Schoolhouse. For more information about SAGE: contact Stephen Abatiell at [educate.sage@gmail.com](mailto:educate.sage@gmail.com), Joan Aleshire at 492-3550 or visit [www.sagevt.wordpress.com](http://www.sagevt.wordpress.com). Follow us on Facebook for up-to-date event details at ShrewsburySAGE and find our sustainability and arts videos at [www.youtube.com/@sagefoundation](http://www.youtube.com/@sagefoundation).

*Submitted by Stephen Abatiell*



We welcome tennis players to use and enjoy our tennis court this summer. The court is just west of the home at 7983 Cold River Road. Extra racquets and balls are in the red shed adjacent to the court. Come anytime—no need to call!! ~Taffy Maynard 773-2087

## Lepidoptera Hour Storytelling Coming August 25 5pm at Pierce's

As you may have read in the Shrewsbury Times, July edition  
On August 25 we have a mission  
That is to bring a story to tell  
One that you have considered well  
That the audience would appreciate  
Regale us all with tales true and great  
We'll have room for several tellers  
Kids, ladies, and even fellers  
We'll be a Pierce's a Shrewsbury beacon  
A grand old time is what we're seeking  
Please do let Thomas know  
You would like to enhance this show  
Call him at 492-3605  
Our answering machine is barely alive  
We will start with 8-10 minutes  
For you to tell a story in it  
That could be a bit longer or not  
Depending on how may tellers we got  
*Submitted by Thomas Hartigan*



### PVF Services LLC

Excavation, Trucking, driveway repair, site prep, building removal, brush grinding and much more!

|                      |                                                                    |
|----------------------|--------------------------------------------------------------------|
| <b>Neal and Chad</b> | 1368 Lincoln hill                                                  |
| Cell 802 236 8105    | Shrewsbury Vt, 05738                                               |
| Office 802 492 3364  | <a href="mailto:sharrowmaple@gmail.com">sharrowmaple@gmail.com</a> |



### Small Farm Flavor & Quality !

**Beef & Pork Freezer Boxes.**  
**VT Maple Syrup**  
**Maple Cream**  
**Maple Cream Cheese**  
**& Sweet Treats**

**Thank you for shopping local at our small farm !!**

**2450 Lincoln Hill  
Shrewsbury VT**

**[SmithMapleCrestFarm.com](http://SmithMapleCrestFarm.com)  
802-492-2151**



# NEWS FROM PIERCE'S STORE 802-492-3326

Bob Knudsen, Manager

**We hope everybody is recovering well from the nasty storms and enjoying your summer!**

## NEW FOOD SELECTIONS IN THE STORE!

We are proud to announce that we are not only making our own sandwiches in the store again, but also partnering with a couple of local businesses to offer variety and quality dishes! First up is Mamma Tamara and Famiglia Italian Food based in Wallingford, recently named the Best Italian Restaurant in the Greater Rutland Area, Mamma Tamara is a locally owned and operated business, featuring Tamara and her husband, Robert. They will be bringing us a selection of dishes in two sizes: Family Size for \$29.99 and a half portion for \$14.99. Lasagna, Meatballs, and a vegetarian Eggplant Parmesan are our featured dishes from them currently, with other options coming soon!

We are also going to begin partnering with Victoria's Mexican Food! Those who came to the Beer Tasting last month will be familiar with the incredible enchiladas she made for us that sold so quickly we couldn't even keep up! Many of you will recognize her offerings from her stand at the Rutland Farmers Market, and she has now graciously offered to sell her tamales and enchiladas in the store. We will have vegan options as well as chicken and vegetarian, so be sure to check those out as well.

## UPCOMING EVENTS

We don't know about you, but our calendar seems to be full up for the next few months. The first event is the annual **Blueberry Festival in the Pierce's Garage on Saturday, July 29 from 11am-2pm.** Come check out the best locally grown blueberries you can get, along with the various sweet treats that our generous volunteers will be making from them.

We are also going to continue offering the mind-bendingly popular Wilcox **802 Ice Cream Bars** at several events around town, including at a couple of the concerts! July 28 we will be there slinging them for \$3 each, and we will return on August 18 with as many as we can carry! What better way to enjoy summertime than with an outdoor concert with your community and ice cream in your face? We will also be selling 802 Ice Cream Bars at the Library Street Dance on August 5.

## EXTENDED SUMMER HOURS

In case you hadn't heard, we are operating with extended hours for the months of **July and August! We will be open from 8am until 7pm, Monday through Saturday, and from 8am until 6pm on Sunday.** We are evaluating the hours for the fall months, but for now, come enjoy the longer days with longer store hours.

## SPECIAL ORDERS AND REQUESTS

Did you know that almost everything we carry can be special ordered in bulk for a discount? Most of the time, you can get 10-15% off the price if you can purchase a larger amount, up to a case, of everything from coffee to tobacco products to beer and wine. And depending on the product and vendor, the turnaround time can be as little as a few days on up to a month. If you aren't sure, just ask!

~~~~~

From the Pierce's Board of Directors

Despite the abundance of rain, we are officially in the "Dog Days of Summer!" Although, it is sometimes thought to be a lazy time of year, Pierce's has been a destination for new ideas, summer fun and renewed energy!

Families have been enjoying the picnic tables on the side lawn, customers have been taking a few minutes to enjoy a cold soda on the front porch, and in late June, the sounds of music, provided by Kristi Bragg and Roxanne Ramah, could be heard during one of Sandy Braggs' wine tasting events (delicious appetizers also made an appearance, compliments of Heather Shay). The community response has been so positive that we are hoping to host a similar event before the snow flies.

To keep up with all the goings-on, expanded communication with the membership and community has been on the rise through increased store e-mailings (thank you, Bob!) and the frequently updated new PIERCE'S STORE WEBSITE, maintained by Ed Sawyer. If you have not had a chance to check it out, please take a moment to do so at www.piercesstore.com. It is filled with timely and up to date information on the latest news, store offerings, and upcoming events.

Speaking of upcoming events, PIERCE'S ANNUAL BLUEBERRY FESTIVAL is scheduled to take place on Saturday, July 29, 2023, from 11:00am. until 2:00pm.

August will see the return of the LEPITOPTERA (MOTH) HOUR on August 25 at 5pm in the Pierce's Garage! Food, Beer and Wine will be sold.

Pierce's Cooperative is always looking for new members. If you are not already a member, please consider joining. The cost is \$20 per year, and membership entitles you a 2% discount at the register, as well as help to support this important community resource! Thank you for your continued support!

Submitted by Liz Bullock, Pierce's Board of Directors



Bone Builders

9-10am

Every Tuesday and Thursday
at the Meeting House on Lottery Road
Free weights and Instruction

Join us to improve your
Bones, Balance, and Strength

The Times of Shrewsbury
PO Box 373
Cuttingsville, VT 05738

PRESORT STD
US POSTAGE PAID
SHREWSBURY, VT
05738
PERMIT NO. 2

To: Postal Patron

Donors are recognized for the remainder of the calendar year in which their donation is received. The *Times* is mailed to all residents of Shrewsbury and is also available online. The cost of printing and mailing is made possible through advertising and donations and are very much appreciated, but are not tax deductible. Donations can be made to: *Times of Shrewsbury*, P.O. Box 373, Cuttingsville, VT 05738. **THANK YOU!**

Marti Andersen
Craig & Peggy Angstadt
Gary & Minnie Arthur
Roy Arthur
Nate & Angela Bailey
Steve Banik & Virginia Gundersen
Randell & Diane Barclay
Mike & Elizabeth Bedesem
John & Mary Beerworth
John & Linda Berryhill
Ludy Biddle
Rich & Cynthia Biziak
Laura Black
Kristi & Sandy Bragg
Virginia & Daniel Buckley
John & Linda Calotta
Jamie & Catherine Carrara
Lila Carrara
Thomas & Kathleen Carrara
Christina Clarke
Peter & Theresa Clarke
Marilyn Dalick
Sally Deinzer
Phillipe & Linda Ducrot
Stan & Weezie Duda
Nils & Pamela Ericksen
Kathi & Tim Faulkner
Gene & Kathy Felder
Chuck & Luisa Finberg
Liz Flint
Eldred & Lily French
Laurel & David Fretz
Licia Gambino
Jonathan Gibson & Eliza Mabry
Richard Gile & Sue Brown
Mark & Carol Goodwin
Pam & Peter Grace
Greenhagen Family
Barry & Barbara Griffith

John Guidry & Tamako Okamura
John & Betty Heitzke
Betsy Hinckley
Bob & Connie Hoelscher
Carmine Iannace & Rita Gyls
Martha Herbert Izzi
Jeffrey & Diane Jakobsen
Jack & Betsy Jesser
Ellen Jorgensen
Martin Kimmig & Julia Latein-Kimmig
Michael & Angie Lauri
Ed & Clare Mangine
Gerry & Chryl Martin
Paddy Martin & Alice McGarey-Martin
Stephen & Patricia Martyn
Charlotte & Todd Maynard
Taffy Maynard
Lynn McDermott
Margaret Mills
Jeff & Pam Monder
Moody Family
David & Georgia Mosher
Jack & Joan Mulqueen
Raymond & Cheryl Noble
Kay O'Dowd
Fran Patten
Elizabeth Pattullo
George & Doris Perry
Jack & Sharon Perry
Susan & Robert Quinn
Roxanne Ramah
Ed & Adrienne Raymond
Russell & Donna Reay
Rainbow Riding

Helen & Andy Richards-Peelle
Ridlon Family
Ed & Judy Ryan
Thomas & Donna Ryan
Gary & Margery Salmon
Susan Savage & Irv Gordon
Brian & Patricia Sedaille
Self Family
Paul Sgalia & Vicky Arthur
Alan & Linda Shelvey
Shrewsbury
Conservation Commission
Historical Society
Library
Outing Club
Volunteer Fire Department
Sirjane Family
Donna Smith
Bob & Sally Snarski
Spring Lake Ranch
Wendy Stewart
Tim & Nancy Stout
Paul & Sarah Titterton
Jess & Ariane Torres
Beau & Cady Tudzarov
Liesbeth van der Heijden
Lana Vanucchi
Howard & Deborah Weaver
Michael & Phyllis Wells
Nancy West
Christel Wiedmann
Lee Wilson
William & Peggy Wilson
Winkler Family
Mark & Connie Youngstrom

