



# Times of Shrewsbury



February 2024

## NEWS FROM PIERCE'S STORE



### Pierce's Store welcomes Rob Jaimes!

The Pierce's Board of Directors is very happy to share that Rob Jaimes will be joining Pierce's Store as General Manager starting at the beginning of February. Rob has worked at the store in the past.

Some of you may fondly remember the awesome baked goods that he created. Rob brings wonderful energy, culinary skills, and great ideas to our store, and we are thrilled that he's joining the team. Please stop by and welcome Rob! While you're at it, perhaps grab a hot cup of coffee and some fresh baked pastries.

Bob Knudsen will be handing the reins over to Rob and supporting a smooth transition. We are grateful for Bob's efforts during his time here at Pierce's and wish him and his family the very best in their future endeavors.

As we welcome Rob as our new General Manager, we recognize the wonderful folks who have served in that critical role since the store re-opened in August of 2009. We are grateful for all their efforts. Past managers have been:

**Lindsay & Scott Courcelle  
K. P. Whaley  
Sally Deinzer  
Elana Levin  
Bob Knudsen**

### Since 1865

Pierce's Store is more than just a store... it's an important historical touchstone in our town. The building has served as a general store since 1865. Willie E. Pierce purchased the store in 1918, and he and his wife, Gertrude, ran the store until 1965 when their children, Marjorie, Glendon, and Gordon took over. Marjorie and Glendon closed the store in 1993 when Marjorie turned 90.

For well over a century, the store served as a warm and welcoming shop that provided the groceries and sundries that Shrewsberries needed and wanted, but also acted as a convivial and welcoming place to warm up, catch up on local news, and gather with neighbors.

After the store closed, Marjorie worked with the Preservation Trust of Vermont, to create the opportunity through her bequest for Pierce's Store to continue as a market, a community center, and as a cherished historical landmark.

In 2007 a group of Shrewsbury residents worked with the Preservation Trust to establish a cooperative to reopen and run the store. Thanks to their efforts, the Shrewsbury Cooperative at Pierce's Store re-opened the store for business in 2009.

If you'd like to learn more about the store and the fascinating story of how it was reestablished, Sally Deinzer (a driving force behind the effort) wrote the excellent book: *Marjorie Would be Pleased – How a Small Vermont Town Reopened a General Store and Renewed Community Spirit*. Copies are available at the store.



Check out the Pierce's Store website at:  
**[www.piercesstore.com](http://www.piercesstore.com)**

There's plenty new to see there, including information about up-coming events, store news, and Minutes from Board meetings. You can also find Pierce's Store on Facebook and Instagram.

~Article by Jeff Monder,  
Pierce's Store Board of Directors

# THE SHREWSBURY TOWN CLERK'S OFFICE NOW HAS REGULAR HOURS

**8:30am to 1pm on Mondays and Thursdays  
(except for February 15)  
1pm to 5pm on Wednesdays**

**Town Clerk contact info:  
(802) 492-3511  
shrewsburyclerk@vermontel.net.**

At the Selectboard Meeting on January 17, 2024, I was appointed to be the interim Town Clerk of Shrewsbury until the election on March 5, 2024.

Feel free to contact me with any questions you may have or requests for early or absentee ballots. There are numerous ways to request these, and I would be glad to assist you.

You may call the Town Clerk line outside of regular hours as the call will be forwarded to the town cell phone which I keep with me. Feel free to contact me with any questions or suggestions you may have.

*~Submitted by Rebecca Rice  
Interim Town Clerk*

# Deadline for petition to be on Ballot

**Town Offices:** For name to be on the ballot, candidates for town office must submit:

- a completed petition with 1% of checklist (10 names)
- AND**
- a completed "Consent of Candidate Form"

to the Town Clerk by  
**5pm on Monday, January 29, 2024**

**Articles on Ballot:** For petitions for Articles to be included on the Warning, 5% of voter checklist (50 names) must have been submitted to the Town Clerk by January 18, 2024.

# Dog & Wolf-Hybrid Licenses

Animal Licenses are due on APRIL 1. Please license your dog/wolf-hybrid to avoid late fees. Be sure your dog wears the license tag as this helps with identification if the dog is found wandering.

Fees are as follows:  
Spayed or neutered dogs \$9;  
intact dogs \$13

After April 1 fees are: spayed or neutered dogs \$13; intact dogs \$17. Licenses may be obtained by mail (9823 Cold River Rd), e-mail (above), or at the town office during regular business hours.

Be sure to provide a copy of any new rabies certificate.

# TIMES OF SHREWSBURY

The Times of Shrewsbury is published monthly from February through December, and compiled by volunteers from material submitted by residents with the goal of informing townspeople of what is happening in Shrewsbury. The views and opinions expressed in articles are solely those of the author and not necessarily those of the editors.

All submissions must be accompanied by the name of the submitting person and are printed at the editors' discretion subject to editing for length and clarity. Letters to the Editor exceeding 350 words will be subject to editing for length. Any information piece or informational political letters (without specific party or vote appeal) will be subject to the guidelines previously described.

A writer of a letter that names a Shrewsbury resident or organization in a critical manner must get copies to the resident or organization, and to the Times by the 10th of the month prior to publication or it will not run. If the named person or organization indicates in writing to the writer and to the Times that they choose not to respond, the letter will run. If the named entity responds, the response and initial letter will run in the same issue.

There is no charge for: jokes, poems, nature reports, family event announcements, or feature articles or letters that are not commercial.

Articles and Advertisements: Deadline for submission is 5pm on the 20th of the month prior to publication; exceptions will be announced in the prior month's Times.

Ads in the Times are for area businesses, local non-profit events, and local ballot election advertisements.

Best Formats: Articles: Word or as an email message with no formatting. Photos: jpeg. Ads: jpeg or Word document.

Monthly advertising fees and relative sizes:

Full page	\$100	(7.5"w x 9.5"h)
Half page	\$60	(7.5"w x 4.5" h; or 3.5"w x 9.5"h)
Quarter page	\$12	(7.5"w x 2.5" h; or, 3.5"wx 4.5"h)
Business card	\$6	(3.5"w x 2"h)
Classified ad	\$3	(15 words or less)

Payment due by the 20th of the month prior to publication.

5/1/2023

Chryl Martin

~ Rich Biziak

Times of Shrewsbury, P. O. Box 373, Cuttingsville, VT 05738

Email: shrewsburytimes@gmail.com

Online: www.shrewsburyvt.org and

http://www.shrewsburyhistoricalsociety.com

## SHREWSBURY COMMUNITY CALENDAR

Jan 27	4pm	*" Adventure of a Lifetime" about the 2 <sup>nd</sup> Expedition to the Antarctic by Sally Deinzer at the Library
Jan 28	4pm	*Science Book Club at the Library
Jan 29	5pm	<b>*Deadline to submit petition and Consent of Candidate form to be on ballot for town offices</b>
Feb 10	7pm	*Music jam at Russellville Schoolhouse sponsored by SAGE
Feb 11	3:30pm	*Writer's Group at the Library
Feb 16	7-9pm	*Program on "How to Get Rid of Plants That Harm" at the Library sponsored by SCC
Feb 16	7pm	*Art group at the Russellville Schoolhouse sponsored by SAGE
Feb 18	4pm	*Famous Books Book Club
Feb 24	1-2:30pm	*Winter planning for a successful growing season at the Russellville Schoolhouse (SAGE)
Feb 25	4pm	*Science Book Club at the Library
Mar 5		Election Day (Town Meeting)
Mar 8	5pm	*Pierce's Store Pot Luck Dinner (5pm) and Annual Meeting (6pm) at the Meeting House

\*see elsewhere in newsletter for details

### TIMES OF SHREWSBURY

online at  
[www.shrewsburyhistoricalsociety.com](http://www.shrewsburyhistoricalsociety.com)  
 and  
[www.shrewsburyvt.org](http://www.shrewsburyvt.org)



**Deadline for submission to *Times of Shrewsbury* is by 5:00pm on the 20<sup>th</sup> of each month.**

### REGULAR MEETINGS and EVENTS

Selectboard Meeting	1 <sup>st</sup> & 3 <sup>rd</sup> Wednesdays – 6:30pm at Town Office
Bone Builders	Tuesdays & Thursdays – Winter hours: 10 am at Meeting House
Development Review Board	4 <sup>th</sup> Wed -7pm at Town Office; check town website for agenda
Library Trustees Meeting	2 <sup>nd</sup> Tuesday – 7pm at Shrewsbury Library
Mill River Unified Union School Board Mtg	1 <sup>st</sup> Wed 7pm @ MRHS & 3 <sup>rd</sup> Wed. 7pm at MRHS unless otherwise warned
Planning Commission	2 <sup>nd</sup> & 4 <sup>th</sup> Tuesdays 7pm at Town Office
Prayer Shawl Group	4 <sup>th</sup> Tuesday at 12noon upstairs at the Meeting House
Religious Society of Friends (Quakers)	Sundays – 10am via Zoom; contact wildernessfriends@gmail.com
Shrewsbury Community Church	Sundays – 10:30am - Worship service
Shrewsbury Conservation Commission	No meetings until February 6, 2024 at 5:15pm, location TBD.
Shrewsbury Historical Society	No meetings until Spring 2024
Shrewsbury Historical Society Museum	Closed for Winter. Appointments only
Shrewsbury Singers	Sundays 9-10:20am @ Mtg House; Wed 7-8:30pm @ 63 Copperas Rd
Shrewsbury Sno-Birds	2 <sup>nd</sup> Tuesday – 7pm at Southside Steakhouse in Rutland
Shrewsbury Volunteer Fire Department	Thursdays – 7pm at the Cuttingsville Station

### Shrewsbury Town Website: [www.shrewsburyvt.org](http://www.shrewsburyvt.org)

Clerk's Office	492-3511	Mondays & Thursdays 8:30am-1pm; Wednesdays 1pm-5pm
Town Garage	492-3656	(Follow prompts to report roadway blockage on non-work days)
Listers	492-2009	Available by appointment
Treasurer's Office	492-3558	Monday 9am-11am
Transfer Station	492-3867	Sunday 8am-4pm ~ Wednesdays 12noon-6pm
Library	492-3410	Hours: Mon 10am-12noon; Tues 7-9pm; Wed 10am-5pm & 7-9pm; Thurs 7-9pm; Fri 10-12noon; Sat 10am-12noon
Meeting House	492-6050	Reservations: 492-3361 or <a href="mailto:julanne@vermontel.net">julanne@vermontel.net</a>
News Flash Email:	<a href="mailto:vtbenbeano@gmail.com">vtbenbeano@gmail.com</a> or <a href="mailto:benbeano@vermontel.net">benbeano@vermontel.net</a> an email list for Urgent and reminder news information]	

Cuttingsville Post Office 492-3585 Window Hours Mon-Fri 7:30am-10:30am and 11:30am-2:30pm; Sat 8am-11am  
Lobby Hours Mon-Fri 7:30am-5:00pm and Sat 7:30am-11am

Burn Permit: Forest Fire Warden Kevin Brown 802-345-8668 or, Deputy Fire Warden Al Ridlon, Jr. 802-282-3642

Animal Control Officer: Adrienne Raymond 802-492-3578

1<sup>st</sup> Constable: Aaron Haupt 558-9980

Game Warden: Tim Carey 793-2776

Emergency Management Aaron Korzun 492-3362

Green Mountain Power outage 1-800-451-2877

Medical-Police-Fire Emergency Dial 911

Ambulance 773-1700

Rutland Hospital 775-7111

[Updated 1/31/24]

## SHREWSBURY SELECTBOARD MINUTES

*The Selectboard meets the 1<sup>st</sup> and 3<sup>rd</sup> Wednesday at 7pm at the Town Office.*

### **December 6, 2023 Minutes of Selectboard Meeting**

Present at meeting: Selectboard members: Aaron Korzun, Marc Cimonetti, Francis Wyatt. Administrative Assistant: Megan White, Road Commissioner: Jamie Carrara

**Members of the public:** Scott Garren

The meeting was convened at 6:35 PM.

**Agenda:** Motion made by Korzun to follow the agenda with the following addition: VFC Request for Funds  
VFC Request for Funds: Scott Garren is requesting funds in the amount of \$500. A. Korzun made a motion to approve the \$500 to VFFC. Seconded by F. Wyatt. Approved

Wreaths for the Brown Bridge: Beth Brown requesting again this year to hang wreaths. Jamie Carrara volunteered to hang the wreaths if Beth could drop them off to the town garage. A. Korzun made a motion to approve the hanging of the wreaths. Seconded by M. Cimonetti. Approved.

**Building Maintenance:** The windows at the center garage have been boarded. Budget 2024: Discussed Budget and Salaries

**Review Minutes:** A. Korzun made a motion to accept 11/15/2023 Selectboard meeting minutes. Seconded by M. Cimonetti. Approved.

**Review Orders:** F. Wyatt made a motion to approve Selectboard Orders #12 for \$19,757.62 Road Orders for \$76,208.00. Seconded by M. Cimonetti. Approved

Adjourned at 8:45 PM.

*Respectfully submitted, Megan White*

*These minutes are unofficial until approved by the Selectboard at the next scheduled meeting*

### **December 20, 2023 Minutes of Selectboard Meeting**

**Present at meeting:** Selectboard members: Aaron Korzun, Marc Cimonetti, Francis Wyatt. Administrative Assistant: Megan White, Road Commissioner: Jamie Carrara  
The meeting was convened at 6:35 PM.

**Agenda:** Motion made by A. Korzun to follow the agenda with no following additions: Seconded by M. Cimonetti. Approved.

**FEMA Reporting:** Marc Cimonetti continues to work with the FEMA advisor organizing all project invoices that have been submitted to FEMA. We plan to have the information completely organized in January. Reimbursement of funds from FEMA is anticipated sometime in 2024.

**ARPA Funds:** The Meeting House requested the use of ARPA funds. At this current 2me ARPA Funds are limited. Currently we have a list of priority projects needing attention that appear to already exceed the ARPA fund amount.

**Rt.103 speed limit:** The final decision on the speed limit was tabled at the last traffic committee meeting. That will allow the speed limit in Cuttingsville to remain at the 35 MPH at least until it is rediscuss at the next traffic committee meeting.

**Budget 2024:** Discussed Budget and Salaries

Review Minutes: A. Korzun made a motion to accept 12/6/2023 Selectboard meeting minutes. Seconded by M. Cimonetti. Approved.

**Review Orders:** F. Wyatt made a motion to approve Selectboard Orders #12a for \$4,251.86. and Road Orders # 12a for \$26,920.68. Seconded by M. Cimonetti. Approved  
Adjourned at 8:40 Pm.

*Respectfully submitted, Megan White*

*These minutes are unofficial until approved by the Selectboard at the next scheduled meeting.*

### **January 3rd, 2024 Minutes of Selectboard Meeting**

**Present at meeting:** Selectboard members: Aaron Korzun, Marc Cimonetti, Francis Wyatt. Administrative Assistant: Megan White. Road Commissioner: Jamie Carrara  
Justice of the Peace: Betsy Jesser. Members of the public: Mark Goodwin, Rebecca Rice  
The meeting was convened at 6:35pm.

**Agenda:** Motion made by A. Korzun to follow the agenda with the following additions:

Excess Weight permit requested from TATRO trucking LLC. Betsy Jesser and Mark Goodwin to discuss Town Meeting set March 5th, 2024. Seconded by M. Cimonetti. Approved.  
Excess weight Trucking Permit: TATRO Trucking LLC requests Excess Weight Permit. Aaron makes a motion to approve. Seconded by Francis Wyatt. Approved.

**Budget 2024:** Discussed Budget.

**Town Meeting 2024:** Mark Goodwin and Betsy Jesser joined us in discussing the protocols. and check lists needed for the upcoming Town Meeting and Elections. Both expressed they are willing to assist the Town Clerk with the intention of a well-run 2024 Town Meeting and Election. The Selectboard is prepared to appoint a Town Clerk to help see us through this busy time until one is elected to the position.

**Review Minutes:** A. Korzun made a motion to accept 12/20/2023 Selectboard meeting minutes. Approved.

Review Orders: A. Korzun made a motion to approve Selectboard Orders #1 for \$1,490.19. and Road Orders # 1 for \$5,199.94 Seconded by Francis Wyatt. Approved  
Adjourned at 9:05 PM.

*Respectfully submitted, Megan White*

*These minutes are unofficial until approved by the Selectboard at the next scheduled meeting.*

### **January 17, 2024 Minutes Of Selectboard Meeting**

**Present at Meeting:** Selectboard members: Aaron Korzun, Marc Cimonetti, Francis Wyatt by phone. Administrative Assistant: Megan White. Board of Listers: Scott Ryan, Clair Krueger Rutland Regional Planning Commission: Devon Neary, Greg Poelker.

**Members of the public:** Rebecca Rice. Justice of the Peace: Barry Griffith

The meeting was convened at 6:30 PM.



## SHREWSBURY SELECTBOARD MINUTES

(continued)

**Agenda:** Motion made by A. Korzun to follow the agenda with no following additions: Seconded by M. Cimonetti. Approved.  
Reappointment Of Fire Wardens: Appointment of Fire Warden Kevin Brown for the term starting July 1st, 2023, to June 30th, 2028. Al Ridlon, Jr. for Deputy Warden for the same term. A. Korzun makes a motion to approve. F. Wyatt Seconded. Approved.

**Municipal Technical Assistance Program:** This MTAP Federal ARPA Program dollars go to small towns. Through this new grant program small towns were not getting their fair share. This program decided to give their PC's money directly, to then apply to these small towns. Towns were ranked by compacity and need. Towns making it into the top 25% ranking have been approved and reviewed. Next round is 50 -70% ranking, Shrewsbury is in this bracket. Originally these grants had a tight fit criterion. They have now loosened the criteria to work better for the towns. The amount Shrewsbury could be awarded would depend on the type of program we choose to apply for depending on projects the town is needing to complete. There are no obligations and if the town decides to not partake there are no penalties.

A. Korzun makes a motion to accept the Municipal Technical Assistance Program (MTAP). F. Wyatt seconds. Approved.

**Appointment of Town Clerk:** Marc Cimonetti has been filling in as the Town Clerk. He feels he cannot maintain the position with the additional responsibilities of the pending election and the importance of preparing for the Town Meeting. The Selectboard recognizes the need to appoint a Town Clerk who can dedicate time to the position and responsibilities. The Selectboard is in no way intending to give favor or endorse a particular candidate. The priority is to fill this position by appointing a town clerk who has knowledge of the legal formalities and would be suited to assist the town in the election process. For the good of the Town of Shrewsbury, A. Korzun motions to appoint Rebecca Rice as Town Clerk. M. Cimonetti seconded. F. Wyatt recuses himself. The motion passed 2-0. Justice of the Peace Barry Griffith swore Rebecca Rice in as the Shrewsbury Town Clerk.

**Excess Weight Permit:** Barrett Trucking requests excess weight permit. Their insurance is in order. A. Korzun made a motion to accept the permit. Seconded by M. Cimonetti. Approved.

**Board of Listers Report:** The Listers gathered for a meeting last week. Discussed thoughts on how the team of listers moves forward taking inconsideration how complex the job has become. The listers mention the need to consider hiring someone professional with years of training to fill this position to best serve the town.

**Budget 2024:** Discussed and reviewed budget.

**New Business:** The radios for the town road crew are down once again due to the Kinsman Hill repeater failure. Jamie Carrara is going to work with the Central Vermont Communications on a better solution.

**Review Minutes:** A. Korzun made a motion to accept the 1/3/2024 Selectboard meeting minutes. Seconded by M. Cimonetti. Approved.

**Review Orders:** A. Korzun made a motion to approve Selectboard Orders #1a for \$2,401.81. and Road Orders # 1a for \$21,477.92 Seconded by M. Cimonetti. Approved  
Reconvenes: 1/29/2024 @ 6 Pm

*Respectfully submitted, Megan White*

*These minutes are unofficial until approved by the Selectboard at the next scheduled meeting.*

*Editor's Note: The minutes have been edited for brevity but not content. For complete minutes, go to the Town website [www.shrewsburyvt.org](http://www.shrewsburyvt.org)*

### Vermont State Senators:

Brian Collamore: [bcollamore@leg.state.vt.us](mailto:bcollamore@leg.state.vt.us)

Terry Williams: [twilliams@leg.state.vt.us](mailto:twilliams@leg.state.vt.us)

David Weeks: [dweeks@leg.state.vt.us](mailto:dweeks@leg.state.vt.us)

### Vermont State House of Representative:

[RepLoganNicoll@gmail.com](mailto:RepLoganNicoll@gmail.com)

*The Vermont General Assembly is in session January thru June. To view committee member-ships, bills that have been introduced, track each bill's progress, and review committee agendas go to [www.leg.state.vt.us](http://www.leg.state.vt.us). During the week you can contact your legislator by leaving a message at the State House by calling 1-800-322-5616 or 828-2228 (the Sergeant-At-Arms' Office).*

### United States Senators:

#### **Senator Peter Welch**

[www.welch.senate.gov](http://www.welch.senate.gov)

Vermont Office: (800) 642-3193

Washington D.C. Office: (202) 224-4242

#### **Senator Bernie Sanders**

[www.sanders.senate.gov/contact](http://www.sanders.senate.gov/contact)

Vermont Office: (800) 339-9834

Washington D. C. Office: (202) 224-5141

### United States House of Representative:

Representative Becca Balint

Vermont Office: 347-461-4982

Washington D. C. Office: (202) 225-4115

*Revised 7/1/2023*

### **Times Financial Report 12/31/2023**

Beginning Cash Balance	\$8,619
Receipts (donations & advertisements)	\$10,589
Expenses (printing, postage & supplies)	<u>(\$9,592)</u>
Year End Cash Balance:	<u>\$9,616</u>

Your donations and advertisements make publishing the Times possible! ~~~The Editors

### In Memory of Paul McDermott

Paul McDermott, 84, passes quietly In Orient, New York on the morning of December 18, 2023. He was Born in 1939, in New Haven, Connecticut. Paul graduated from Hamden High School. He attended the University of Connecticut but soon, hopeful to join the Airforce, Paul enlisted in the Army serving during the Vietnam war. While in the Army he attended both Princeton and Rutgers Universities. He married Lynn Baldwin in 1962. They had two children while living on base at Fort Monmouth in New Jersey. In 1964 he left the military to join US Motors in Milford, CT.

Looking to liberate himself of the corporate life Paul and Lynn travelled north and settled in Shrewsbury, Vermont in 1969 where he learned the craft of carpentry. Ahead of his time, he won awards for innovation in the integration of solar power in the construction of new homes. His models still stand today. He partnered with Joe Patten and Chris Lyon to form Patten, Lyon & McDermott Contractors. Beyond the rural life in Vermont, sailing was a huge draw for him and in 1990 he moved to the North Fork of Long Island, New York where he brought his skills of carpentry to the renovation and recrafting of sailboats.

He is survived by his partner Sally Gelling, his son Michael McDermott (Jennifer,) Kelly McDermott Daverin (Mark,) and five grandchildren. His ex-wife Lynn McDermott still resides in Shrewsbury, Vermont.

Call out Paulie, Paul, Pop, dad, Lau Ye or Grampy Paul the same man of tall stature turned around. He was as diverse as they come, with interests spanning Saturday Afternoon at the Opera to the rewiring of sailboat engines to the quest of creating a perfect pecan pie. Able to master the slip stream effect of dropping a can from the cab to the bed of his truck under a full moon, with no headlights, on a cold winter night, a young boy sat in reverence of his pop. His ability, by example, to inspire his children in the finer things gave them the foundation to always seek more and see beauty.

Whether building a barn for her ponies or renovating a Victorian in Orient Point, NY Paul shared his high level of perfection and pride in ones work with his daughter, repaid with trips to the Metropolitan Opera to see La Traviata or later, just enjoying afternoon charcuterie and a bottle of wine on his Orient porch. Sharing his trade with his son, a lifelong gift or taking him to a weekend Motocross event, Paul was there showing his support and love as best he could. Paul knew the simple pleasures of cooking great braciola, the importance of a fine Riesling on a sunny afternoon before sending a child off to university and the genius of Wilson Pickett. Having the loudest bite coupled with the softest heart, he will not be a man easily forgotten. RIP 303.

~By Jennifer McDermott

~~~~~

### Condolences to the Family of David Rice

On behalf of the Shrewsbury Historical Society, we send our condolences to the family of David Rice, former member. He passed away in Florida on January 7, 2024. David loved history and we are most grateful for his work on his research of the town's cemeteries. He was also an eloquent speaker on the subject held at the museum several years ago.

Respectfully submitted, Ruth Winkler

~~~~~



### LAUREL GLEN ASSOCIATION REPORT

When John P. Bowman built the impressive mausoleum in the little cemetery in Cuttingsville, it is unlikely that he knew he was creating a long-lasting legacy of love, loss, and, let's face it, curiosity. Bowman made his wealth in tanning, mostly in Stony Creek, NY, but he returned to Vermont after the deaths of his beloved wife and two daughters, retiring to the state where he grew up. The cemetery here became final resting place for his family. Three years after his death, an association was established to maintain the mansion, cemetery and related buildings. This organization has met since 1894: The Laurel Glen Association (LGA).

The LGA met for its most-recent annual meeting on January 15, 2024. Trustees Barry Griffith, Mark Stewart, Tim Faulkner, and Pam Monder voted to reelect Tom Giffin to the Board. We reflected on the past year which saw two successful and well-attended open houses at the mansion. And we applauded the volunteer efforts of the Vermont Old Cemetery Association to upkeep the Laurel Glen Cemetery in July and the Sons of Union Veterans of the Civil War - Ripley Camp for their participation at two events this past year. We happily recalled the well-attended open house in October and look forward to more events in 2024. Tom recently gave testimony to the Institution Committee at the State House on the condition of the cemetery wall. Thanks to Representative Logan Nicoll and Senator Brian Collamore for their interest in the project.

The Association was recently granted 501c-3 status and now plans to establish The Friends of Laurel Glen as we work to restore beautiful Laurel Hall and engage interested community members in creating regular open houses, on-site activities, cleaning days, cemetery tours, and more.

This brief article is the first of monthly reports on activities and events at the LGA. Look for news about upcoming meetings and ways to get involved at the mansion in the next edition of The Times of Shrewsbury. If you want to be added to the list of Friends, would like to train to be a docent, or wish to support the mansion's restoration, send an email to Pam (Freddie) Monder at [freddie.monder@gmail.com](mailto:freddie.monder@gmail.com). Let us know how you would like to get involved with the Laurel Glen Association.

DID YOU KNOW??? The Shrewsbury Historical Society was formed in 1971, the Mountain School in 1973 and the SVFD in 1952. While the LGA, established in 1894, may appear to be the oldest institution in Shrewsbury, Pierce's Store beats it by 29 years! ~Submitted by Pam Monder



## SHREWSBURY VOLUNTEER FIRE DEPARTMENT

The holidays are behind us, the winter weather has set in with cold temperatures and slippery roads. The Shrewsbury road crew continues to do a great job keeping our roads safe for travel and people are driving responsibly. Keep up the safe travel.

Since December we have responded to a motor vehicle accident on Route 103 North of Cuttingsville, and a carbon monoxide alarm in Shrewsbury. We had two mutual aid calls for Mt. Holly for a fire and for an injured hiker on Christmas night.

The carbon monoxide call offers a great reminder for us all. The call was late at night during a storm with high winds and lots of snow. The occupants were wise and did not waste time evacuating the building and called 911. Upon arrival at the scene the crew was unable to drive up the driveway because of the adverse weather conditions. Russ Carrara collected the necessary equipment and had no choice but to walk through these difficult conditions to reach the home to determine the issue. Was there a real problem or faulty equipment? The carbon monoxide alarm had accurately detected carbon monoxide in the residence, our equipment determined it to be at low levels of 29 ppm. Chief Phillip Severy arrived on scene and plowed out the driveway. The crew determined the snow had partially blocked the exhaust pipe of the heating system to the home. The carbon monoxide detector did its job and the occupants did as well by leaving the building and waiting for the home to be cleared and determined safe to re-enter!

Other responsibilities performed have included maintenance and checking of equipment. Replacement batteries were needed on Engine 2, which was seven years old, and Tanker 2. Thanks to Kevin Brown for taking the time to acquire the parts needed and replace them.

Chief Phil Severy researched options for replacement of the infrared cameras and two were purchased. The cameras on hand were ten years old and the rechargeable batteries were no longer available. Firefighter Jeff Dayton researched the Automated External Defibrillator (AED) equipment options and two were purchased. The AED's on hand were 15 years old and again replacement batteries were no longer available. The department members spent several nights training with both pieces of equipment. We also spent an evening reviewing and familiarizing ourselves with all the town roads and how we may access each area in case of a call. SVFD welcomed a new member, Keith Patterson. Thanks for volunteering and serving the Town of Shrewsbury!

We still have a lot of winter to go through. Slow down, allow extra time for your daily commutes, keep driveways clear and accessible for us, and check your exhaust / vent pipes for snow buildup, and remember

**STAY FIRE SAFE**

*~Submitted by Jack Perry*

## Vote Rebecca Rice for Shrewsbury Town Clerk

Most of you know me, but for those who do not, my name is Rebecca Rice and I live on Coldham Road. My family first came to Shrewsbury in 1942. Growing up, I spent my summers here until I became a full time resident in 1980. I live with my 6 horses, 11 goats, 2 dogs and my cat, Walker.

I am an attorney with over 36 years of experience. The first twenty years of my practice focused on real estate law. I spent many hours traveling around Vermont doing title searches in over 85 towns. My first title search in Shrewsbury took place when the Town Clerk's Office was in June Wilk's basement!

Eventually I started dabbling in Bankruptcy law, which became my main focus. I am proud of the work I have done helping folks get their financial lives back on track, especially the farmers. However, as I slowly wind down my law practice, it is now time to move on to something new and exciting.

Currently, I have been appointed interim Town Clerk. I hope with your support I can continue on as your Town Clerk, taking on new challenges, meeting new faces, and helping the Town however I can.

In the meantime, if you have any questions or suggestions for the Town Clerk's Office, please feel free visit me at the Town Office. I can also be reached at (802) 353-1695 or at [steepbush@aol.com](mailto:steepbush@aol.com).

Thank you for your support!

*Rebecca A. Rice*

*Paid Political Advertisement*

*Thrive Center*  
OF THE GREEN MOUNTAINS

Chiropractic Care  
Applied Kinesiology  
Therapeutic Massage/Bodywork  
Holistic Health Education  
Nutritional Supplements  
Coaching • Worksite Wellness

**Joseph P. Donohue, DC**  
**Lisa Marie Donohue, MA, LMT**  
*Serving the Community with Excellence  
and Compassion Since 2000*

**68 South Main St, Wallingford, VT**  
**802.446.2499 • [instagram.com/thrivecentervt](https://www.instagram.com/thrivecentervt)**

**BURN PERMITS** If you are plan to burn brush you **MUST** call for a burning permit. **Contact Forest Fire Warden Kevin Brown 802-345-8668 or Deputy Forest Fire Warden Al Ridlon, Jr 802-282-3642.** The landowner is responsible to control a brush fire, ensure you have proper tools, water supply, and people to assist in containing the fire.



Hello Shrewsbury Residents,

My name, Martha Sirjane, will be on the ballot on March 5th for Town Clerk. If elected, I would reopen the office with regular hours, including evening hours, for those working 9-5 jobs to ensure ease of access for all.

I moved to town just over 40 years ago, having grown up in southern Vermont, and became involved in our community almost immediately. My past experience has provided me with an understanding of the necessity of organization, accuracy, deadlines and confidentiality. I have served as president, vice-president, secretary and treasurer at different points in time through my involvement with the following:

- Shrewsbury Outing Club - board member
- SAGE – board member
- Spring Lake Water quality & invasive monitoring
- Poll Worker
- Pierce's Store planning & volunteer
- Shrewsbury Telecom Working Group
- Highway safety promotion in Cuttingsville
- Instigated Frozen Meals for those in need via Living in Place
- Shrewsbury Library – volunteer
- Mentoring at-risk teens
- Rutland Area Food Coop – board member
- Rutland Dismas House – meal coordinator
- Thresholds Decisions Coordinator –Dismas House; Supervised volunteer & inmate work
- Shrewsbury Business Owner – Caravan Gardens Farm

The above experiences have given me a good working knowledge of both Town and State governments, and allowed me to cross paths with many residents. Still, there are many I would appreciate the chance to meet. While I'm not a crowd person, I am a people person, and I derive much satisfaction from being of assistance to others – as the list indicates.

When researching the clerk's position and available support, I was delighted to find the VT Secretary of State's website to be the most user-friendly VT. State website I've ever needed to access. I was perhaps more surprised to find the following quote listed as the job description, "Should have the patience of a saint and be a good ambassador for the town". I am quite confident I would make a great ambassador for our community. I love our town and appreciate its residents and all they do to make it such a wonderful place to live!

Feel free to call if you have any questions (492-3377).  
Thank you for your consideration, Martha A. Sirjane

*Paid Political Advertisement*



## **GAMING AFTERNOONS**

*Open to all towns – come to one, come to all!*



**1 PM to 3 PM**

**FREE!**

*(donations gratefully accepted)*

**Monday, 1/29/24 Mount Holly**

**Library  
Lower Level**

26 Maple Hill Road  
Belmont

**Monday, 2/12/24  
Gilbert Hart Library**

**Klock Room**  
14 South Main Street  
Wallingford

**Monday, 2/26/24  
Shrewsbury Library**

98 Town Hill Rd  
Cuttingsville

Join your neighbors for fun afternoons of gaming - chess, checkers, mahjong, backgammon, Yahtzee, and more! Say NO! to cabin fever, bring a competitive spirit, and make new friends. It's FREE, and we'll supply the games. It's just another way for you to get to know your Green Mountain Neighbors!

Green Mountain Neighbors is an all-volunteer social network made up of people from the Vermont towns of Mount Holly, Shrewsbury, and Wallingford. Our goal is to provide community events and non-medical support services to help people enjoy their homes and communities while they age. Find out more about us and how you can become involved by visiting our website:

<https://greenmountainneighbors.org/>



**VT MAPLE SYRUP & GRASSFED BEEF**

**Perfect Gifts Or Stock Your Own Pantry!**

Vermont Maple  
Syrup  
Maple Cream  
Maple Candies  
Pancake Mix  
Marinades & Spices

Locally Sourced  
Pork, Chicken & Eggs

Grassfed-Finished  
Beef  
Ground Beef  
Steaks & Roasts  
All kinds of Ribs  
Briskets & Sausages

**OPEN: WED THRU MON 10 AM - 5 PM**

From: Rutland: Left off VT RT 103 just 2.5 miles - on the right  
From: Cuttingsville: Just 2.1 miles up Town Hill Rd,  
right on Lincoln Hill Red Barn on right

2450 Lincoln Hill Road, Shrewsbury VT. 05738  
[SmithMapleCrestFarm.com](mailto:SmithMapleCrestFarm.com) 802-492-2151 [maplecrest.info@gmail.com](mailto:maplecrest.info@gmail.com)  
**We ship syrup all over the USA**





## How to Get Rid of Plants that Harm!

**Friday, February 16, 2024  
7pm – 9pm  
at the Shrewsbury Library**

The Shrewsbury Conservation Commission will host VT Fish and Wildlife biologist Travis Hart to share his expertise on a variety of ways to get rid of those pesky, harmful, and downright difficult to remove invasive plants that might be lurking on your property.

Travis is a native Vermonter raised in Wells and living in Poultney. Travis has worked on various conservation related projects throughout Vermont involving invasive plant mapping, natural community mapping, stream geomorphic assessments, urban forestry inventories, and locating and monitoring summer maternity colonies for little brown bats. He works for Vermont Fish and Wildlife as a Habitat Specialist. He covers Addison, Bennington, Rutland and manages state lands in the Rutland District.

Travis will discuss common invasive plant species and how to identify them. He will go through some of the various methods for removal/treatment, including both manual/mechanical and herbicide treatments. He'll discuss the proper timing and effective planning strategies for invasive control as well as the impacts of invasive plants on wildlife and forest health and production.



## Community Input Needed to Help Inform the Priorities of the Region

The Rutland Regional Planning Commission asks residents to participate in the Rutland Regional Plan 2026 Online Survey. Survey results will be used to guide policies and actions for the 8-year plan update, which is intended to help shape coordinated and efficient community economic development. The plan is a vision for the future with broad goals to facilitate that vision.

The survey is an important piece of the overall development process. Information collected will help inform a plan that features equitable policies to best serve the region's communities.

The survey will be complemented by several outreach efforts led by the Rutland Regional Planning Commission staff, including community open houses and pop-up events. As these activities are scheduled, they will regularly be updated on the Rutland Regional Plan 2026 website: [rutlandrpc.org/plan2026](http://rutlandrpc.org/plan2026)

"It is crucial that we hear directly from the residents we serve. We recognize that each of our 27 towns face a variety of challenges and that there isn't a one-size-fits-all solution," said Devon Neary, RRPC's Executive Director. "Our hope is that the community will share their thoughts with us so we can integrate those challenges and potential solutions into the 2026 plan update."

The survey will be open through March 31, 2024 and can be accessed at:

<https://www.surveymonkey.com/r/RutlandRegionPlan2026>

*The Rutland Regional Planning Commission is one of eleven regional commissions serving Vermont municipalities. Regional planning commissions are a local resource for towns and, in a state without county governments, a critical link between municipal affairs and state government. More information about the Rutland Regional Planning Commission can be found at [rutlandrpc.org](http://rutlandrpc.org).*



## THE NEW LEARNING PROJECT CHOOSING TO EXPERIENCE OUR POTENTIAL

**MUSIC LESSONS -- Guitar, Piano, and more**  
**RED CROSS COURSES -- First Aid, CPR, Lifeguarding**  
**SWIMMING INSTRUCTION**  
(More services at website)

**STUDIO IN CUTTINGSVILLE VT**  
[www.TheNewLearningProject.com](http://www.TheNewLearningProject.com)  
[TheNewLearningProject@gmail.com](mailto:TheNewLearningProject@gmail.com)  
802.492.3208

**Marcos Levy**  
Instructor with over 30 years  
of Experience



Library News Submitted by Joan Aleshire

#### LIBRARY & FOOD SHELF HOURS

Monday 10 am to 12 pm

Tuesday 7 pm to 9 pm

Wednesday 10 am to 5 pm & 7 pm to 9 pm

Thursday 7 to 9 pm

Friday 10 am to 12 pm

Saturday 10 am to 12 pm

We thank you for staying away if you're not feeling well, and for wearing a mask to protect yourself and others!

To search the Library catalog, put a hold on a book or DVD in our collection, and get the latest Library news, please go to our website: [www.shrewsburylibrary.org](http://www.shrewsburylibrary.org).

We were happy to celebrate the return of our COOKIE SHARE & SILENT AUCTION in December! MANY THANKS to all who took part, but especially to LISA and DONNA for the inspired decorations and tireless effort; and to GAIL, THOMAS, TRISH, ED, and SUZAN for all their help!

MANY THANKS to SCOTT GARREN for sharing his love and knowledge of astronomy in his talk on the upcoming April 8 Solar Eclipse. Scott and Heather will be viewing the eclipse elsewhere, but we hope he will return to present an update sometime this spring. The Library has ordered special glasses for watching the event, and will make them available to interested patrons when we receive them.

MANY THANKS to LINDSAY COURCELLE and CONGRATULATIONS on the publication of her new children's book, *A Cup of Dreams: Chamomile*, with illustrations by Jon Marro. Lindsay gave a launch reading at the Library last month; we hope she will return to present more Story Hours. *A Cup of Dreams* is available to be checked out at the Library.

WEATHER ADVISORY: If the weather is bad, please call the Library (802 492-3410) to see if we're open!

BOOKS TO DONATE? We're happy to accept books for our fall Sale or for our collection, but have very little storage space in the winter; the storage shed isn't weather-proof. PLEASE CALL FIRST to see if we have room. (802 492-3410).

STORY HOURS will resume soon! Parents, grandparents and caregivers, please let us know if you're interested. Saturday mornings seem like a good time, and all ages are welcome. Stay tuned for updates!

#### Coming Events:

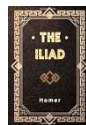
Sunday, January 27 @ 4pm: SALLY DEINZER presents the second showing of the much-anticipated program about her father's expedition to Antarctica with Admiral Byrd.

#### Program Suggestions

The Library Program Committee will meet soon to plan programs for the coming year. If you have suggestions for a program you would like to present or attend, please contact Joan: [joanaleshire@vermontel.net](mailto:joanaleshire@vermontel.net).

#### Continuing Programs:

Sunday, February 11 @ 3:30pm: WRITERS' GROUP: Poets, writers of short fiction, memoirists, if you would like to share your work, contact Penelope Weiss: [pw9@earthlink.com](mailto:pw9@earthlink.com) or Joan Aleshire: [joanaleshire@vermontel.net](mailto:joanaleshire@vermontel.net).



Sunday, February 18 @ 4pm: FAMOUS BOOKS BOOK CLUB will continue discussion of THE ILLIAD.

Sunday, February 25 @ 4pm: SCIENCE BOOK CLUB: Best Science and Nature Writing 2023, edited by Carl Zimmer and Jaime Green. Please let Margery Salmon know if you want an e-book or a print copy: [salmonm@vermontel.net](mailto:salmonm@vermontel.net).

#### New Books include:

- *Prophet Song* by Paul Lynch: The Booker Prize-winning novel set in the near future in an Irish dictatorship.
- *The Country of the Blind: A Memoir at the End of Sight* by Andrew Leland: An affecting and helpful personal account of visual impairment, for all of us.
- *Resurrection Walk* by Michael Connolly: A Lincoln Lawyer crime novel by the master storyteller.
- *Alex Cross Must Die* by James Patterson: The newest thriller by this popular writer.
- *Up Home: One Girl's Journey* by Ruth Simmons: A memoir by the extraordinary leader, who grew up in a sharecropper's family and became the visionary president of Brown University.

#### New DVDs include:

*The Crown: Fifth Season*: finally here for your viewing pleasure!

More DVDs will be available as Academy Awards season approaches

# ROKU

Now available for checkout at the  
Shrewsbury Library

The library is offering two Roku devices loaded with Netflix and DisneyPlus for week long checkouts.

Roku can be used on any "smart" TV. Instructions included with the Roku. We will not be providing any further technical help than the instruction sheets included with the checkout, and volunteers will not be providing technical support.

We are doing a 3-month trial, so check them out if you would like to see this continue!





**BOOK REVIEWS**  
 \*\*\*\*\**Fantastic*  
 \*\*\*\*\**Compelling page turner*  
 \*\*\**Enjoyable*  
 \*\**Just O.K.*  
 \**Not recommended*

**An Immense World**  
**How Animal Senses Reveal**  
**the Hidden Realms Around Us**  
 by Ed Yong  
 ★★★★★


This is Pulitzer- Prize- winning author, Ed Yong's newest book, and it doesn't disappoint. Scholars have historically attributed human emotions and mental abilities to animals, and this bias has consequences. Scientists have seemed reluctant to consider that the data they had collected could be even more complex, refined, and mind-blowing when stepping inside the animal's umwelt and setting ours aside. "Umwelt," and "umwelten" were new words for me (page 14). Umwelten means "cognition," and each living being lives within a realm of its own.

So, it follows that studying animals through the boundaries of our human umwelt makes the umwelten of other species opaque to us. When one looks at an animal's behavior through the lens of that animal, suddenly information becomes available that you would otherwise miss. Yes! So amazing. An example offered was watching a swimming seal. If you were tuned in to the seal's particular umwelt, you would understand that water is full of tracks and trails that only the seal can see. The book is so dense with details about animals familiar to us, like seals and dogs, but also creatures less so, like star-nosed moles and peacock mantis shrimp. (Did you know that scallops have eyes and a brain?) *An Immense World* is a treasure trove, and sometimes daunting onslaught of information. The footnotes alone could comprise another book!

Page 21 discusses how we deny dogs the joys of sniffing. Page 22: "People force their values onto a dog—not letting them sniff when going for a walk. Forcing them to look instead of sniff, dimming their olfactory world and suppressing an essential part of their caninehood." The typical dog owner sees the walk simply as exercise and is sometimes annoyed by a sniffing dog and pulls the leash to move it along. When a dog sniffs, they are not merely assessing the present but also reading the past and divining the future (page 21). This book requires a dedicated reader, but the reward is colossal.

~Review by Marilyn Dalick

**SNOWSHOES**  
 (Adult & Children)  
  
 Available for checkout  
 at the  
**Shrewsbury Library**  
  
**Borrow for 3 days**



# Movies from **Adm. Richard E. Byrd's** **Second Expedition** **to the Antarctic**

Filmed by John Dyer,  
 Sally Deinzer's father, in 1933-1935

If the weather cooperates  
**Saturday, January 27, 4 p.m.**

**Shrewsbury Library, limited seating**


**Beauty Excitement Adventure**

## Admiral Richard Byrd's 2nd Expedition to the Antarctic The Shrewsbury Library has two books about the Expedition:

- *Discovery* written by Byrd tells the exciting and informative story of the whole expedition (1933-1935). Lots of photos too.
- *Alone*, also written by Byrd, tells the story of his 5 months alone during the winter night at the Advance Base weather station 123 miles south of Little America, the nearest location with other people. It tells of the beauty of the silence and the all-surrounding sky filled with auroras, the terror of almost losing his way because of drifting snow on a very short trip from his shelter to the anemometer pole, *the challenge of learning to accept solitude, and confronting the very real possibility of his own death*, and much more.

Both books are fascinating and high adventure reads, and both books are available online as ebooks or free PDFs.

~Submitted by Sally Deinzer



**STORY HOURS at the LIBRARY!**  
 Parents, Grandparents, Caregivers, and  
 Kids (babies and up):  
  
 If you would enjoy coming to a Story Hour  
 at the Library on Saturday mornings, starting in  
 March or April, please contact Pam Grace:  
 (802) 492-3529 or [pamgrace@vermontel.net](mailto:pamgrace@vermontel.net).

# Shrewsbury Historical Society

www.shrewsburyhistoricalsociety.com

## Winter time and reminiscing

To begin with, the Historical Society right now is resting and looking forward to a new year. Top most will be the necessary repairs to the museum's roof. After that, the stained-glass windows will need attention. The storage room in the museum is being reorganized as room is scarce at this time. In the forthcoming Town Report, you can read about all the activities of the Society in the year 2023. In the museum's windows the candles once again glowed celebrating the Christmas and New Year's celebrations.

In all the years I have spent as a member of the Historical Society, the comment I have heard most was that the folks who came in would be looking for information as to their family genealogy. We try to help them find information. It would be so helpful in the future if we would learn to date each photo, clearly name the subjects and add them to your future searches of history. Ask the seniors in your family for their recollections, and mark everything down. With this in mind, I share with you the following.

## My roots and salute to the women in my family

I would now like to introduce you to my dearest Grandma, Anna (nee Arnold) Spuhler, who was born in New York City on January 4, 1884. At the age of 15, my Grandma married Frederick Spuhler and together they operated a saloon on the east end of NY on East 14<sup>th</sup> Street. Those days, if you ordered a beer, you could indulge in light refreshments, which Grandma provided. Grandma heard from many patrons that they were anxious to find building plots on Long Island She decided to contact the Schweneke Land & Investment Company on the Island and was hired to sell lots in Hempstead, as a sideline or hobby. She traveled to the Island by the 34<sup>th</sup> Street ferry, then a steam train ride to Hempstead, and then a horse and buggy ride to East Hempstead. She liked the area so much that she used her commission money to have their own home built in 1912. They rented to friends for six years until they moved from the City to Long Island, where they brought up their five children, four boys and one girl--my mom.

Anna was the first woman to operate a real estate business on Long Island. She was very well known and bowled until she was in her 70's and over. And one of my favorite stories is in looking for properties, she met the owner of Tony's Pizza Place, and invited all her family to an "Italian Pizza Pie" at Tony's. We never heard of that before, and Grandma found it "out east". She rooted for the Brooklyn Dodgers and was fond of "Campy" Campenella, their catcher. She was one of the best and bravest women I know. I miss her. .

My dearest Mom, Gertrude (nee Spuhler) Kosby married my Dad in 1923 and they raised my two brothers and I. Mom was an authentic "Rosie the Riveter", as when WW II came along and men were off to war, including my brothers and many cousins, our family became a Grumman Aircraft family as many women joined up to help build airplanes, including me. I went to work at Grumman's two weeks after I graduated high school. My

Mom and Dad opened their house to all relatives when they were on leave from their assignments. Our family was lucky as all the men came home from the war safe and sound which ended in 1945. I remember my mom's bravery in 1941 when a P39 airplane from Mitchel Field caught fire in flight over our neighborhood and crashed nearby, killing three small children as they played together. My Mom and a neighbor rushed to help the pilot out of his harness as he hung from a tree. Mom told us his metal buckles were so hot to touch, but released him to the ground. My Mom was very brave. I miss her.

To end this tribute I add my daughter, Jennifer (nee Winkler) Lauri and husband Joseph, grandparents of my first great grandson, Eric Joseph Lauri. Their days are filled with joy as their son, Michael and his Angie became parents on January 1, 2023. Eric is on the verge of walking and then the fun really begins!

## Reminder

Annual dues are due for 2024.

**Individual \$10**

**Family \$15**

**Contributing \$30**

**Life (Individual or Couple) \$125**

Check (marked for dues) payable to Shrewsbury Historical Society should be mailed to: Julianne Sharrow, Treasurer  
1368 Lincoln Hill Road; Shrewsbury, VT 05738

Thank you for your support. Happy healthy New Year!

*~Submitted by Ruth Winkler*



**FARM & WILDERNESS  
CONSERVATION**

FWC is excited to announce our current list of upcoming events. We hope you will join us and stay up to date with events as they get added!

- 2/10: 10am-12pm Community Snowshoe/Hike
- 2/27 7pm-8pm Virtual Speaker Series: Vermont Loons
- 3/12 7pm-8pm Virtual Speaker Series: Vernal Pools
- 3/23 10am-12pm Community Hike/Snowshoe
- 4/8 12pm-1pm Virtual Speaker Series: Bogs and Fens

Check out our website [fwcv.org](http://fwcv.org) or scan the QR code below to sign up!

All events require preregistration.



Reach out with any questions by emailing [conservation@farmandwilderness.org](mailto:conservation@farmandwilderness.org) or calling 802-422-3761





## The Legacy of Jockey Hill Farm

*This article is in honor of my mother, Patty Stout, and my uncle, David Rice, both of whom recently passed, Mom on December 16, 2023, and David on January 7, 2024.*

During the many hours with my mom during her recent illness, we had many conversations about our memories of Jockey Hill Farm. Born in 1937, my mom started going to the farm in 1938 which was enjoyed by her grandfather, Paul Moody, president of Middlebury College from 1921-1942. Paul purchased it from the college in 1942. The farm has been enjoyed now by six generations. My great grandmother, Charlotte Moody, spent



many summers there after her husband died in 1947. Our original farmhouse (photo), which burned in 1976, took most of my father's time so I would wander down the road to visit my beloved uncle, David Rice who lived in the

house now owned by Oded and Amanda Benyo. Almost everything I learned about managing land came from David. With remarkable patience and compassion, he taught me how to run the tractors, chainsaws, woodworking equipment and many other devices and skills. He encouraged my brother, Chris, his daughters, Becky and Susy and me to appreciate the glory of the farm.

Life at Jockey Hill Farm was very different in the '30's and '40s from how it is today. First, we had a glorious farmhouse that had been thoroughly updated in the 1920s by the Tasheiras from California. All meals required formal attire and were typically prepared by my great grandmother and grandmother. The land around the house was actively farmed and much of it was pasture (now forest). My relatives seldom could go "exploring" for fear of encountering a bull or cows grazing, often up in the sugar stand beneath towering maples. The house had a large library. Evenings were devoted to reading in the library or singing around the piano, often songs from the Von Trapp Family of the "Sound of Music" fame.

The Plumley family farmed the land now owned by the Stouts and Benyos for many decades. Frank Plumley, a jack of all trades, continued to farm the land until the mid-1960s. Over the next ten years, the fields rapidly returned to early growth forest. After the house burned, my family and I devoted our energy to reclaiming the fields. We enrolled it in Vermont's Current Use Appraisal program in the 1980s and placed a conservation easement on it in the early 1990s. We've tried to retain as much history at the farm as possible. The post and beam barn was built in the 1860s. The cottage next to the barn housed the Delco generator which provided the main house with electricity until the 1940s. Two sugarhouses stood on the land; one is now just a foundation, but the other was rebuilt fifteen years ago and resides on the Benyo's property.

Mom adored everything about Shrewsbury; she and David left a remarkable legacy that their families can enjoy and share with others.

The farm is open to the public. My family and I love walking the land with others to explore its history and to discuss how we're managing the land. I can be reached at 617-899-1011 or stoutim@gmail.com. ~Article by Tim Stout



Spring Lake Ranch  
therapeutic community

## Moving to Vermont

One month ago, my husband and I drove 1,500 miles from Oklahoma to Cuttingsville, Vermont, with a U-Haul in tow and two dogs by our side. For me, this was a dream come true.

I started thinking of Vermont almost a decade ago – even though I had never seen the place. It started as an idea of a magical scene with tall trees perched on tall mountains. A cool escape from the hot, dry plains of the west. Thoughts of Vermont accumulated and spilled over into some very serious internet searches, which turned into a question – what if we moved?

In the age of Pinterest and Zillow, my question was not unique. Sitting behind the screen and scrolling through what-if scenarios is practically an American pastime. And I would have continued dreaming and screen-shotting had I not received some troubling news about my health. My diagnosis wasn't terminal, but it did tilt my perspective of life on its side. Dreams always feel attainable until you realize the future is not a guarantee.



With moving in mind, we visited Vermont three times – each trip looking for a reason to dislike it. Instead, we found an undefinable comfort here, something we felt less and less of in Oklahoma, where we were born and raised.

Still, we were unsure. The distance from home and family was staggering. The cost of living was daunting. Was this simply a mid-life crisis? Would our crush on the Green Mountains fade? These hesitations vanished when I interviewed for a job at Spring Lake Ranch, a distinctive farm-based mental health program.

I stayed on the ranch for three days and found that nearly every value I held dear was a way of life here. Values such as compassion, kindness, connection, responsibility, and caretaking of people and land, were not paraded as marketing tools, they were ingrained and quietly understood to be the way to live a good life. I was struck by the lack of pretense, and more impressively, by the lack of cynicism. I worked side-by-side with residents, clinicians, and farmers to tend animals, winterize gardens, and prepare food. We gathered to share stories of each day's work over hot meals, and ultimately blended into a natural community.

Community - that heavily hunted enigma. A word that is overused and rarely experienced. It seems to exist here in Vermont, and especially at Spring Lake Ranch, without manufacture. And that was the deciding factor. I accepted the job before they offered it – calling my husband to say, "it's all happening." The following weeks were short. We packed, we moved, and started an entirely new life. And here we are, now living without regret, a dream turned reality.

~Article by Rose McCracken

## The Shrewsbury Community Church



*Compiled by Sue Ransom-Kelley*

We had a joyous Christmas Eve Service! The church was full! One of the highlights of our service was the Christmas Message: The Faith of the Shepherds; presented by the young people of the church. They were able to show us the message of the arrival of Jesus is good news for us today just as it was for the shepherds 2000 years ago.

Thanks: The Christmas Tree was given by:

- Nathan & Kate of Paxton Meadow Tree Farm

The Wreath on the front of the Meeting House was given:

- In Memory of Bill Smith by the Smith Family

Poinsettias & Wreaths in the Sanctuary are given:

- In Memory of Alex & Virginia Donaski by Elaine Ransom
- In Memory of Thomas J. Kelley by the Kelley Family
- In Memory of Ace Leonard by Lori Leonard
- In Memory of John Lorentz by the Lorentz Family
- In Memory of Fred Ramah, Ray & Rhea Roberts by Roxanne Ramah
- In Memory of Kevin Regimbald by his Mom & Scott
- In Memory of George E. Richards, Sally Jones, George C. & Mary Over by the Over Family
- In Memory of Gerry Stone by the Stone Family
- In Memory of Larry Carrara, Marsha Littler & Gary Salmon by the Congregation

**SUNDAY FUN DAY:** We are a group for young people age 2 years and up. We meet at the Shrewsbury Community Church Sunday's at 10:30. We do activities, work with the Heifer Project, learn about our community and how to be good people. We plan and learn inside and out! We participate in the Christmas Eve Service and Community Dinners. Parents and community members work with us. Projects are nature based and many with recycled items. All are welcome and we would love your attendance. PLEASE COME AND JOIN US ANY SUNDAY! Call with questions: Cortney 683-7852, Anissa 779-2248 or Lynette 683-0631

### Community Church Calendar

- Sunday Jan 28: 10:30am Fun Day Program for kids. Worship Service lead by Pastor Karen Braeutigam.
- Sunday Feb 4: 10:30am Fun Day Program for kids. Worship Service and Holy Communion lead by Pastor Karen Braeutigam.
- Sunday Feb 11: 10:30am Fun Day Program for kids. Worship Service lead by Pastor John Hill.
- Sunday Feb 18: 10:30am Fun Day Program for kids. Worship Service lead by Pastor Karen Braeutigam.
- Sunday Feb 25: 10:30am Fun Day Program for kids. Worship Service lead by Pastor Karen Braeutigam.
- Tuesday Feb 27: 12 noon. Prayer Shawl Group. Upstairs at the Meeting House.

### Community Food Shelf

Free Community Food Shelf at the Library in the front entry way. Those in need are welcome to help themselves any time the Library entryway is open. Limited hours are: Mon 10am-12noon; Tues 7-9pm; Wed 10am-5pm and 7-9pm; Thurs 7-9pm; Fri 10am-12noon; and, Sat 10am-12noon.

We have our additional Summer Food Shelf on the side porch at Pierces Store in North Shrewsbury. Those in need are welcome to help themselves.

**Food Delivery and Assistance** If you are unable to get to the Food Shelf at the library in Shrewsbury, we will deliver groceries to you. If you need items which are not available on the shelf we can provide grocery gift cards. Call Karen at 802-558-5991 or Sue at 802-779-4825 or 802-492-3738.

### Community Needs

- Wedding, Funeral or Memorial Service Requests: Contact Donna Smith 802-492-3367; or Sue Kelley 802-492-3738, 802-779-4825
- Community Helping Hand Requests: Contact Donna Smith 802-492-3367; Sue Kelley 802-779-4825, 802-492-3738; or Karen Lorentz 802-558-5991. Shrewsbury residents experiencing financial hardship. Assistance can be given for basic needs (food, heating, gasoline, etc). If you or a neighbor are in need, please let us know!
- Pastoral Care, Home, Hospital Visitation, Outreach Requests: Contact Roxanne Ramah 802-492-3675 or Ruth Kinne 802-775-5318.



*Shepherds:* Jack Allard, Crosby DaSilva, Calen Lorentz, Elana Lorentz, Brady Park & Chase Stone.

*Angels:* Grace DaSilva, Harper Edwards-Barker, Isabelle Park & Eliza Sharrow

*Ushers:* Chris Allard, Emmitt Barker, Gabe Dayton & Brett Park  
*Candle Lighters:* Abbi Dayton & Anissa Park

*Special Music:* Roxanne Ramah, Jim Lorentz & Roberta Hemmer



## NEWS FROM MRUUSD SCHOOL BOARD

Vermont's education funding formula is unique and complex when compared to other states. The State's education finance system uses a statewide funding formula coupled with local spending decisions and state education property tax administration at the local level. Each school district's education spending is determined at a local level, where school boards set budgets that must be approved by voters.

The current system is a product of multiple legislative reforms aimed at adjusting inequities in the funding system. These reforms include Act 60 (1997), Act 68 (2003), Act 130 (2004), and more recently Act 127 (2022).

Here at MRUUSD, the budgeting season starts in August. The staff and administration work collaboratively with the Board Finance committee to develop a fiscally responsible budget. This budget is then sent to the full school board for review and approval, before being submitted to local voters. For the upcoming 2024-25 budget all parties have worked diligently to control all aspects of spending for which we have control. We have control over items like textbooks, infrastructure, and facilities maintenance and upkeep, but not over items like health care increases (projected to increase 16%+). We have been successful in holding our overall budget increase to around 6%. Because of that, we are projecting a 0.07% increase in our district tax rate.

If you watch our board meetings, you will see that we are spending quite a bit of time discussing academic curriculum, assessments, and improvement--as well as what sets Shrewsbury apart from the rest of the district. We are also discussing areas of growth and how to change course to address them. We feel strongly that we are putting forward a budget that is both supportive of our schools and fiscally responsible. That said, we do know that the Common Level of Appraisal adjustments that the state adds to the district tax rate will be challenging for many this year. As we've watched property values fluctuate over the last several years, we have kept that impact in mind as we've crafted our budgets. We hope that you see that we are committed to supporting our schools and our communities.

If you have questions about our budget, or about what is going on at Shrewsbury Mountain School or in the district at large, please don't hesitate to reach out. We always appreciate hearing from the community.

*~Submitted by Cindy Van Dien, MRUUSD School Board, Shrewsbury Representative*

### Free Medical Equipment

Living In Place continues to provide, at no cost, medical assist equipment that has been donated by Shrewsbury residents who no longer need them. On hand right now are many wooden crutches, adjustable aluminum crutches, walkers, rollators, commodes, shower seats, bedpans, toilet safety bars, and a large wheelchair. If you need any of this equipment, call Jan O'Hara at 492-8687.



## SNO-BIRD NEWS

Well...this year is not starting out very well for us. We have doing a lot of tree clearing and not a lot of grooming but we are keeping a positive attitude that we will get some really good riding in.

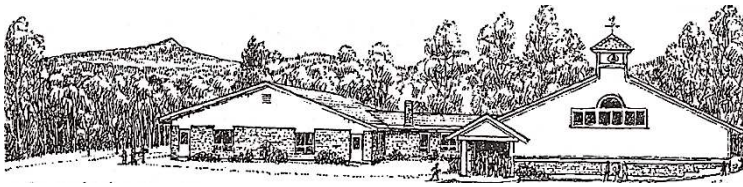
The trails are open and surprisingly good for the lack of good snow. The last storm that had 10" of fluff really did not help a lot. We are working on filling the multitude of water bars the State installed on our trails. With low snow this is very hard, but with the Mogul Master Drag we have it really helps. The only problem we have with that is it makes the snow slim just before the area to be filled, but I guess smooth dirty snow is better than a hole. Another one or more 6+ inch storms will keep improving the trails.



We have only been out four times this year and two were January 19<sup>th</sup> and 20<sup>th</sup>. At this time we usually are out 8 to 10 times. We were hoping that we were going to start grooming 2-3 times a week, but next week the temps are getting too warm, and it looks like some rain coming.



Everyone I talked to yesterday while grooming were very happy to have the trails as good as they are...and there were a lot of sleds out. We groomed the CCC, Grouse Hill, and Old Plymouth Road for the Mount Holly Sno-Fliers. Their groomer is down for transmission issues, and we always do our best to help our neighbors! It is not only snowmobilers we see happy but the cross-country skiers are liking our efforts too. We are hoping that our tracks hold up because we still have not received the new ones yet. At this point I do not think we will have them for this season. Enjoy our trails if you can, it makes all of our efforts worthwhile! ~Submitted by Roy Arthur



## SHREWSBURY MOUNTAIN SCHOOL

### Important Dates:

- 1/17: 6th grade transition activity at Green Mountain Rock Climbing Center
- 1/19: 6:00pm All School Movie Night - students and parents are invited to view "Elemental" and bring a water bottle and their own nut free snack!
- 2/14: MRU Chamber Singers deliver Singing Valentines! Order by 1/29!
- 2/19-2/23: Winter Break!

### Updates and information:



1. Winter Sports! Huge thanks to our volunteers! Our K-2nd grade students are ice skating with Tinmouth Elementary on Mondays at the Spartan Arena and our 3-6th graders are skiing and snowboarding at OKEMO. This is an incredible opportunity for our students to experience these winter sports and have SO MUCH FUN.

2. Family Movie Night: All students were invited to bring their parents and view "Elemental." This was a great time to gather and celebrate community during the cold winter!

3. 6th grade transition program! (*photo on page 22*) All the 6th graders in the MRUUSD district are gathering for team building activities and experiences. Our first one was on January 17 where our students were able to rock climb together at the gym in Rutland. More activities are scheduled throughout the spring including an overnight trip as well as a Mill River Union High School visit day where students get a tour, have a question-and-answer session with MRU students, and participate in activities that make them feel comfortable with this school transition.

4. Trout in the Classroom: The eggs have arrived! Each year 5th and 6th grade students at SMS eagerly await the delivery of our brook trout eggs the first week of January. We begin our studies by making an accurate count of the eggs



received using enlarged images, which we entered into our data recording sheet. Every day students test and record the water quality and temperature as well as make observations of the growth and behavior of our fish. Throughout the spring semester we will study the life cycle and structural adaptations of our trout. As our fish develop, students will monitor and discuss the importance of the nitrogen cycle within our tank. This year students will also focus on macroinvertebrates in connection to trout sources and measures of stream health, which we will explore first hand when we release our trout in early June.

Please contact me if you have any questions or concerns at 802-786-3995 or at [kcimonetti@millriverschools.org](mailto:kcimonetti@millriverschools.org). Take care, ~Kristin Cimonetti, Principal



## Fundraiser

### Shrewsbury Mountain School PTO

The Shrewsbury Mountain School's PTO is selling a healthy variety of seeds from High Mowing Organic Seeds, a Vermont based, USDA organic, and NON GMO seed company. If you plan on purchasing seeds for a garden this spring please consider ordering through this fundraiser. The proceeds will help support our many PTO events and purchases throughout the year. Our school will receive 60% of all proceeds!

**ALL ORDERS ARE DUE TO THE SCHOOL BY Friday, February 9**

Order form next page →

Order Forms may also be picked up at Pierce's Store – completed order forms should be dropped off or mailed to the school.

Orders will arrive to the school at the beginning of March for distribution.

By purchasing these Vermont 100% certified organic seeds you are helping the Mountain School raise money for enhancing the education of our children while growing delicious produce for your family and friends. If you have any questions, please feel free to contact me directly. As always, we thank you for your continued support!

Sarah Bolster, SMS PTO member  
[sbsc@vermontel.net](mailto:sbsc@vermontel.net)



# High Mowing Organic Seed Fundraiser Order Form

## Shrewsbury Mountain School

By purchasing these Vermont 100% certified organic non-GMO seeds you are helping the Shrewsbury Mountain School PTO raise money for our school while growing delicious organic produce for your family and friends.  
The Mountain School will receive 60% of the proceeds.

**Thank You for Your Support!**

**Return form and payment by Friday, February 9, 2024. Make checks payable to Shrewsbury Mountain School PTO.**

Order forms can be dropped off or mailed to Shrewsbury Mountain School; or emailed to Sarah Bolster @ [sbsc@vermontel.net](mailto:sbsc@vermontel.net).  
We will contact you when orders arrive in the beginning of March.

Name \_\_\_\_\_ Phone Number \_\_\_\_\_

Individual Seed Packets	
Quantity	\$3.75 each
Total \$	
	Maxibel Haricot Vert
	Red Ace Beet
	Belstar Broccoli
	Starburst Carrot Blend
	Who Gets Kissed? Sweet Corn
	Mini-Me Cucumber
	Lacinato Kale
	Butterflay Spinach
	Gourmet Lettuce Blend
	Freckles Lettuce
	Parade Bunching Onion
	Sweet Gem Sugar Snap Pea
	Valentines Day Radish
	Amish Paste Tomato
	Sweetie Cherry Tomato
	Damsel Tomato
	Brulee Butternut Squash
	Howden Pumpkin
	Blacktail Mountain Watermelon
	Greensleeves Dill
	Genovese Basil
	County Fair Blend Zinnia
	Hella Sonnenblume Sunflower
	Lions Mouth SnapDragon

Seed Packet Collection	
Quantity	Summer of Sunflowers \$10.50
Total \$	
	Easy Salad Greens \$10.50
	Kitchen Herb Gift Box \$17.45
	Kids Garden Gift Box \$17.45
	A Bees Garden Gift Box \$17.45
	Bouquet Garden Gift Box \$17.45
	Garden Starter Gift Box \$24.50
	Container Garden Gift Box \$24.50
	Heirloom Vegetable Gift Box \$24.50
Individual Seed Packet Total	\$
Seed Packet Collection Total	\$
GRAND TOTAL	
\$	

\*Seed descriptions and photos can be found on [www.highmowingseeds.com](http://www.highmowingseeds.com)

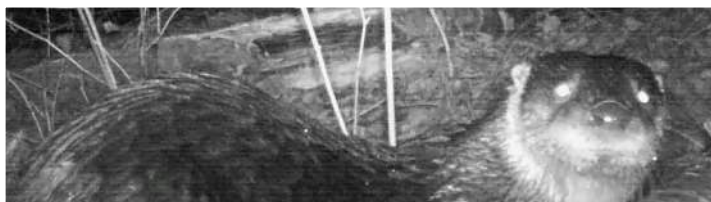


## Shrewsbury Conservation Commission

### Trail Camera Picture of the month

#### Turkey Count:

I'm still not seeing any turkeys around town. On the Christmas bird count at the end of December, only five turkeys were reported. Very unusual!! Anybody else noticed fewer turkeys?



#### Shrewsbury Mustelids

Mustelids are fur-bearing carnivores that inhabit terrestrial and aquatic habitats.

Mustelids have a long tube-shaped body, short legs, and a strong, thick neck with a small head. All possess well-developed anal scent glands. The five digits on each foot are equipped with sharp nonretractile claws. Males are usually larger than females. A tubular body does not retain heat as well as a stockier body of the same weight and is therefore associated with higher metabolism. As a result, mustelids are very active and inquisitive in their constant search for prey.

Species of mustelids found in Shrewsbury include otter, fisher, mink, long-tailed weasel, and short-tailed weasel (ermine). These speedy critters are hard to capture with a trail camera. Although, otters seem to like to mug for the camera! If you can find where a fisher is leaving scent you may find it will linger long enough for a picture. Mink are just super fast and I have yet to have one be still enough for a frontal view! One winter I had a long-tailed weasel regularly visiting my cellar and keeping the mouse population under control. I often wish the "best mouse trap ever" would return! (*Information obtained from VT. Fish and Wildlife and Wikipedia*)

Send your photos, trail cam captures of wildlife or animal tracks to Linda Shelvey. ~Submitted by Linda Shelvey



## Shrewsbury Singers

Winter – Spring Schedule  
(March 3<sup>rd</sup> – May 19<sup>th</sup>, 2024)

Sunday Mornings, 9:00AM – 10:20AM

March 3<sup>rd</sup> – May 19<sup>th</sup>

Shrewsbury Meeting House (upstairs)

Shrewsbury, VT 05738

&/OR

Wednesday Evenings, 7:00PM – 8:30PM

March 6<sup>th</sup> – May 15<sup>th</sup>

Licia Gambino's Living Room Studio

63 Copperas Hill Rd.

Shrewsbury, VT 05738

#### What Songs?

Songs sung in harmony from across the globe and spanning centuries.

#### Who?

Teens – Adults who love to sing!  
All levels of experience are welcome.

#### FOR MORE INFORMATION:

Licia Gambino (802) 492-3792  
hamgam@vermontel.net

## BRANCH BROOK

## EXCAVATING LLC

Driveways / Harley Raking / Ditches and Drains /  
Land Clearing and Reclaiming / Stump Removal /  
Retaining Walls; New and Old / Ponds / Power, Gas,  
and Water Line Burial / General Dirt Work



Benjamin Turco

1269 Branch Brook rd

Mount Holly, VT 05758

Phone: (802) 770-8964

branchbrookexcavating@gmail.com



### The Human Ruminant - New Year edition

My last collection of thoughts expressed gratitude to many of the people who make our world work. As feared, I certainly forgot a few. The most egregious omission was: Farmers ! Oh my goodness, what would we do without our farmers ! Working with the alchemy of soil, water, air and light, a farmer feeds many beyond his/her own family. A farmer is an entrepreneur, an experimenter, a tinkerer, always seeking the bounteous harvest through an evolving array of means and opportunities, with plants or with animals. The farmer is both scientist and artist. Many of us are "farmers" big and small with our gardens of healthy vegetables and fruits or beautiful flowers.

Farms and gardens both are acts of creation, yielding food and beauty, a delight to all the senses. This time of year we are dreaming of putting our hands to the soil in the warm sunshine of springtime. Plans and seed orders or swaps must be completed, plus inventories of tools and supplies , and for farmers, a business and customer relations plan.

I think that we humans are slowly unraveling the mysteries of the soil and learning thereby to value the dirt beneath our feet. Rather than simply a substrate to which we must add things, the earth is revealed as teeming with life, a treasure trove for us to study and work with to enhance the well-being of our environment overall. It is my impression that there were millennia of learning about the earth and how to harvest or grow food, through careful observation with a respectful attitude. This seems to have been followed by several hundred years now of trying to impose our will on the good earth, making farms more like factories. Because of our ignorance, we have simplified the inputs considered necessary for a plentiful harvest, truly not understanding the life of the soil. Indeed, so far farmers have produced more and more food, yet that food is becoming less nutritious. Our soils are being depleted of life as we drench them with those few inputs along with other chemicals targeting insects and weeds. The complex web of life that would nurture nutritious food is being lost.

Fortunately, there is perhaps an agricultural renaissance going on now, with many ideas arising and declaring themselves as solutions to the problems brought on by our current large scale agricultural practices. It remains to be seen, through the experimentation of our farmers, which ideas will really help us to have a sustainable food system. There is regenerative farming, rotational grazing, no till, food forests, permaculture, agroforestry, rewilding, restoring waste lands to fertility, greening deserts, intensive gardening, growing nutrient dense foods, salt water farming, to name some and of course there must be more. All of these pay attention to the relationships among plants, minerals, fungi and animals that make up the life of the soil.

We are so blessed in Shrewsbury to have good farmers among us, hardworking innovative people of plenty! Here, in Vermont, in the Northeast, in the U.S. and around the world, we are going to need such people as we move through the uncertainties and challenges of climate change. Let's give thanks for the farmer!

~Submitted by Pamela Darrow

Find us at: The Olde Barnayrd  
5444 VT Route 103, Cuttingsville VT 05738



- Local & Handmade Goods
- Maple Syrup
- Craft Food & Beer
- Home Decor

Hours: 11am-6pm

Contact Us: (516) 522-4174 - [hello@wallyscorner.com](mailto:hello@wallyscorner.com)

Shop Online: [www.wallyscorner.com](http://www.wallyscorner.com)

**Shop Small, Buy Local** 



### PVF Services LLC

Excavation, Trucking, driveway repair, site prep, building removal, brush grinding and much more!

**Neal and Chad**

1368 Lincoln Hill

Cell 802 236 8105

Shrewsbury Vt, 05738

Office 802 492 3364

[sharrowmaple@gmail.com](mailto:sharrowmaple@gmail.com)

Mount Holly, VT



**TREE WORKS**

**Joshua Bickford**

802.855.3216

[joshfbickford@gmail.com](mailto:joshfbickford@gmail.com)

**Fully Insured • Tree Removal • Pruning**



We are happy to get back into garden planning with the staff at Shrewsbury Mountain School. The students will have more growth opportunities in the garden and more gourmet opportunities with the kitchen cart this spring, so stay tuned for updates and photos!

As we look ahead to the growing season, Scott Courcelle of Alchemy Gardens and SAGE, is happy to offer 3 workshops to the community to help folks get moving on their own gardens.

Winter Planning for a Successful Growing Season will be February 24, 1-2:30pm. Seed Starting, Get an Edge on the Season with Strong Transplants will be March 23, 1-2:30on, and Nutrient Dense Growing Techniques 101/ Weed, Pest and Disease Management will be April 20 from 1-3:00pm. All programs will be at the Russellville Schoolhouse.

Finally, we hope to see you at the Schoolhouse for our music and art groups. We will have music on February 10 and our art group meeting on February 16. Both at 7pm. Feel free to bring an instrument to music and some examples of art projects you're working on to the art group. Our intention is to help folks find more community and more creativity and inspiration. We plan to assemble a community group art show this April. Please join us!

SAGE, Shrewsbury Agricultural Education & Arts Foundation, has a mission to support and promote sustainable farming and other arts that nourish community life. For more information about SAGE: contact

Stephen Abatiell at [educate.sage@gmail.com](mailto:educate.sage@gmail.com),

Joan Aleshire at 492-3550

or visit [www.sagevt.wordpress.com](http://www.sagevt.wordpress.com).

Follow us on Facebook for current event details at ShrewsburySAGE and find our sustainability and arts videos at [www.youtube.com/@sagefoundation](http://www.youtube.com/@sagefoundation).

*~Submitted by Stephen Abatiell*



While the horses take a vacation, the rest of us are spending our days looking for ways to raise funds, so we can provide our programs to individuals of all ages regardless of their ability to pay. Last month we had a nice surprise when a new and innovative program we initiated with Rutland Mental Health Services--Strengthening Families Through Horses--was spotlighted in a Vermont online newspaper--VT DIGGER. This is the link. <https://vtdigger.org/2024/01/11/community-care-network-rutland-mental-health-services-strengthening-families-through-horses/>

We are looking forward to continuing this program this summer and we would like to take this opportunity to thank the Vermont Country Store and the Vermont Children's Trust Foundation for assisting us in financing this program

At Rainbow Riding we strive to meet the needs of every individual that participates in our programs, mounted or unmounted. For more information about Rainbow Riding Center and our mission please check out our website: [rainbowridingcenter.org](http://rainbowridingcenter.org) and follow us on Facebook or Instagram @rainbow\_riding\_center. Contact us at [programs@rainbowridingcenter.org](mailto:programs@rainbowridingcenter.org) or 802-236-2483 to inquire about programs and lessons. For information about opportunities to volunteer with us contact [janetupton@rainbowridingcenter.org](mailto:janetupton@rainbowridingcenter.org).

*~Submitted by Janet Upton*



**Small Farm Flavor & Quality !**

**Pure VT Maple Syrup**

Cook once and eat twice - check out


- beef roasts,      - pork sausages,
- short ribs,        - pork chops,
- ground beef      - ground pork
- ribeyes            - chicken breasts

- Local Bacon & Eggs !

**Thank you for shopping local at our small farm !!**

2450 Lincoln Hill  
Shrewsbury VT

[SmithMapleCrestFarm.com](http://SmithMapleCrestFarm.com)  
802-492-2151



**WIRENUTS  
ELECTRICAL  
LLC**

[bbates@vermontel.net](mailto:bbates@vermontel.net)

**REBECCA BATES  
LICENSED  
ELECTRICIAN  
802-492-3406  
802-353-4376**



ENGEL & VÖLKERS®  
MENDI MICHAEL



Expert Real Estate Advisor: The Key to Your Success  
Let me be your guide.



126 Main Street, Ludlow, VT 05149 +1 802-342-8410  
[Mendi.Michael@EVrealestate.com](mailto:Mendi.Michael@EVrealestate.com)

©2023 Engel & Völkers. All rights reserved. Each brokerage independently owned and operated. Engel & Völkers and its independent License Partners are Equal Opportunity Employers and fully support the principles of the Fair Housing Act.

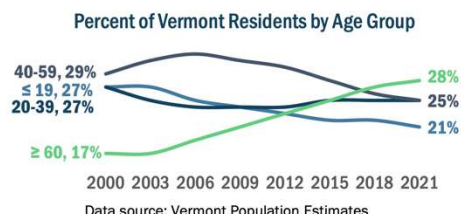
# Let's Make Vermont an Age-Friendly State

Age Strong Vermont: A Multisector Plan

November 2023

## Vermont's Population is Aging

- Vermont has the 4<sup>th</sup> oldest population in the country.
- One in four Vermonters are 60+.
- By 2030, one in three Vermonters will be 60+.



## Vermonters want a Multisector Plan on Aging

Survey Question: How important is it for our elected officials to prioritize and invest in a Multisector Plan on Aging?

Very or somewhat important, 81% 6% Unsure, 13% Somewhat or very unimportant

Survey Question: Does the State of Vermont currently have the resources to address the needs of the older adult population?

No, 64% Yes, 11% Unsure, 25%

Data source: Vermonter Poll, a representative statewide survey conducted annually by UVM Center for Rural Studies.

## Age Strong VT is a 10-year roadmap to an Age-Friendly State

We're working toward a welcoming, inclusive and livable state for all. To make this happen, we need support from partners across the state. Let's work together to make Vermont an Age-Friendly State.

Scan the QR code to see our road map to an Age-Friendly State.



HealthVermont.gov/AgeStrongVT



DEPT. OF DISABILITIES, AGING & INDEPENDENT LIVING  
DEPARTMENT OF HEALTH



Information submitted by Kathy Felder, Shrewsbury Health



Shrewsbury Mountain School 6th grade transition program students



Viruses pass more easily from person to person indoors, and cold, dry air can weaken resistance. Colds, flu, Covid and RSV are prevalent this year. These types of illnesses can be treated by a primary care provider, unless the symptoms are life threatening.

## What you should know about RSV

Almost all children are exposed to RSV (respiratory syncytial virus) before age 2. For most, it's like having a cold. But some children, especially the very young, can become dangerously sick. If your infant or toddler is having difficulty breathing, an increased rate of breathing or coughing fits that won't stop, these could be signs of RSV.

Community Health offers the nirsevimab RSV immunization to all well children under 6 months of age. Check with your provider or pediatrician at Community Health. During an office visit providers can check for symptoms of RSV and other viruses. Contact us at 802-779-9169. If it's a medical emergency, please dial 911.

## Know Where to Go For Healthcare

Major winter storms can make transportation more difficult due to icy roads. So, plan ahead and knowing the right place to go when illness or injury occurs is important.

- Community Health Primar Care**  
<https://www.chcrr.org> is for illness, injury, wellness visits, monitoring chronic health conditions and following up from hospital visits.
- Community Health Express Care**  
(<https://www.chcrr.org/services/#express-care>) offers primary care for minor injuries or illnesses after hours or on weekends when your primary care provider is unavailable. Express Care Castleton and Rutland are open 8am-8pm daily.
- Emergency Department** is the best place to go when illnesses or injuries are more severe or life threatening.

Learn more about Community Health at <https://www.chcrr.org>

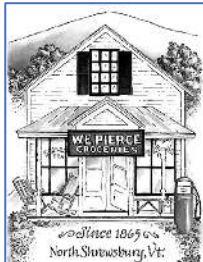


## Bone Builders

10am - 11am

Every Tuesday and Thursday  
at the Meeting House on Lottery Road  
Free weights and Instruction

Join us to improve your  
Bones, Balance, and Strength



## NEWS FROM PIERCE'S STORE 802-492-3326

Bob Knudsen, Manager



Hello friends and neighbors! It's Valentine's season, so get your pink hats and candy hearts ready!

As most of you know by now, I am stepping down as manager of the store this month to focus on my new baby and other projects I have going on. Don't worry though, I am leaving the store in good hands as Rob Jaimes is taking over! Many of you may already know him from his volunteer baking duties on Sundays and from his previous stint as my assistant manager awhile back. He has a great background in retail and has a much better handle on kitchen work and foodservice. I will also stick around as a volunteer for a few shifts here and there and will be working behind the scenes with Rob and the staff and volunteers to keep this transition smooth and orderly.

I thank everybody in the community who has helped out at the store in my time as manager, especially my in-store staff and volunteers who have been a huge part of getting the store put back together after a chaotic period during and in the immediate aftermath of the pandemic. Rob will be able to take the foundation we have laid and improve on the areas that are inefficient and add even more to it, keeping the spirit of Pierce's and the community running strong! Unfortunately, I do not have the space here to list everybody who was instrumental in helping out with their labor and support, but suffice to say that we have the best group of people possible for the store.

Alright, enough of the sappy stuff, let's get back to business. We have ramped up our local goods and consignment shelves to include even more support for our friends and neighbors around town and keep that money in our community. Be sure to check out some of our pottery and glass works, or some of our local authors who have incredible works of poetry, history, and even books about the store and town themselves! And don't forget the local produce, maple products, eggs, and meats coming in from Evening Song, Stone's Throw, Smith Maple Crest, Stewart Maple, Severy, Spring Lake Ranch, Carrara, Kelley Beef, and more!

On the note of the transition at the store, one of the focuses will be to get the kitchen and foodservice back on track. If you have suggestions or feedback on what types of foods and selections you would like to see, please let us know! Breakfast burritos, some deli sandwiches, and soups are all going to be on the menu, but if you have special requests or even just different types of those basic items, feel free to shoot us an email or pop in and give us a tip. We can't promise that everything will be possible, but we are eager to really get things back up and running on that front.

Once again, thank you to everybody who made the past 2+years up at Pierce's enjoyable and making me feel welcome, please continue to support the store and give Rob the same consideration! Thanks, ~Bob Knudsen

### Annual Meeting and Future Plans

As a cooperative, Pierce's Store is member-owned. Membership is maintained through annual dues. Members have a vote on the slate of Board candidates at the Store's Annual Meeting, are eligible to serve in Board positions, and are entitled to a 2% discount on merchandise. Memberships are for the calendar year and \$20 renewals are due on January 1. If you haven't done so already, please add your renewal to your next purchase at the store.

### Annual Meeting

Friday, March 8, 2024

at the Shrewsbury Meeting House

5pm Potluck Supper -- 6pm Annual Meeting

Attendees will meet Board members, learn how the store has done over the past year, and hear exciting plans for the future. There will be plenty of opportunity for questions and discussion. And then attending members will vote for candidates for the open board positions.

The all-volunteer Board consists of nine members. The current Board members are: **Lily French, Board Chair; Mark Youngstrom, Vice Chair; Paul Titterton, Treasurer; Jeff Monder, Secretary, and Board Members Ed Sawyer, Larry Abelman, Liz Bullock, Dave Tibbs, and Lana Vanucchi**

Each year three Board Positions reach the end of their terms. For 2024, that applies to the Board positions held by Mark Youngstrom, Lana Vanucchi, and Liz Bullock. Mark and Lana are interested in continuing on with the Board. Liz has decided to step down after 7 years of commitment to Pierce's success. We are grateful for Liz's amazing contribution to our Store. If you would like to join our Board, reach out to any one of us.

Also coming up –

- The Events Committee is putting together a calendar for 2024 that will include wonderful wine tastings, special events like the **Lepidoptera Story Hour**, a **Chili Cookoff**, and more!
- The store has a small paid staff but also depends on volunteers. **Volunteers** can help out in the store, but we need help with the many events we host. If you're interested in being a volunteer, please stop by the store or reach out to one of the Board Members.

On a personal note, I am overjoyed that we are welcoming a new manager with a fresh view for the store's future. Pierce's already offers so much. Among my favorite things are weekly fresh fish, the frequent wine tastings and the wonderful wine selection, fun events like the Chili Cookoff and the Lepidoptera Story Hour, and the great friends that I've met through the store. As we look to the future, I'm excited about delicious, prepared foods, and an updated inventory that satisfies the needs of our community, and reflects the unique and beautiful spirit of Shrewsbury.

What are your favorite things about Pierce's? What would you like to see? Bring your thoughts and ideas to the store, to members of the Board, and to our upcoming Annual Meeting. We all look forward to hearing from you.

~Submitted by Jeff Monder,  
Pierce's Store Board of Directors



The Times of Shrewsbury  
PO Box 373  
Cuttingsville, VT 05738

PRESORT STD  
US POSTAGE PAID  
SHREWSBURY, VT  
05738  
PERMIT NO. 2

To: Postal Patron

Donors are recognized for the remainder of the calendar year in which their donation is received. The *Times* is mailed to all residents of Shrewsbury and is also available online. The cost of printing and mailing is made possible through advertising and donations and are very much appreciated, but are not tax deductible. Donations can be made to: *Times of Shrewsbury*, P.O. Box 373, Cuttingsville, VT 05738. **THANK YOU!**

Gary & Minnie Arthur  
Roy Arthur  
Steve Banik & Virginia Gundersen  
Rich & Cynthia Biziak  
Laura Black  
Kristi & Sandy Bragg  
Christina Clarke  
Sally Deinzer  
DiPrinzio Family  
Stan & Weezie Duda  
Lizzie & Wayne Emmons  
Kathi & Tim Faulkner  
Todd Frederick & Michelle Greene  
Scott Garren & Heather Shay  
Richard Gile & Sue Brown  
Mark & Carol Goodwin

Greenhagen Family  
Barry & Barbara Griffith  
John Guidry & Tamako Okamura  
Betsy Hinckley  
Carmine Iannace & Rita Gyls  
Jack & Betsy Jesser  
Gerry & Chryl Martin  
Stephen & Patricia Martyn  
Lynn McDermott  
Jeff & Pam Monder  
Moody Family  
Jack & Joan Mulqueen  
Fran Patten  
George and Doris Perry  
Susan & Robert Quinn  
Helen & Andy Richards-Peelle

Thomas & Donna Ryan  
Brian & Patricia Sedaille  
**Shrewsbury**  
Mountain School PTO  
Volunteer Fire Department  
Jess & Ariane Torres  
Anne Vanneman  
Howard & Deborah Weaver  
Michael & Phyllis Wells  
Nancy West  
Christel Wiedmann  
Ali & Rick Wilson  
Lee Wilson

