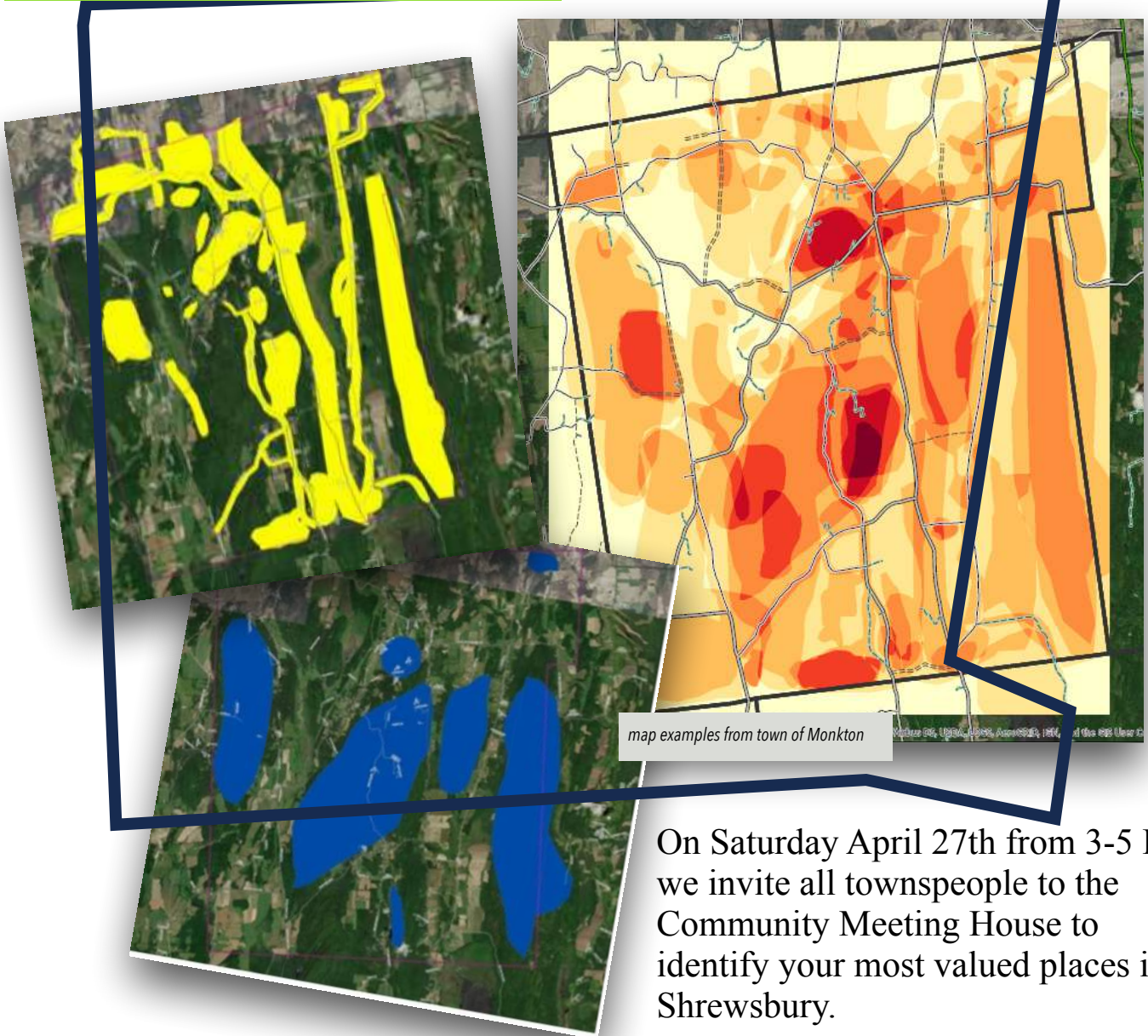


MAKE YOUR MARK IN SHREWSBURY!

What places in Shrewsbury do you love?

What do you value about these places?

Community Values Mapping



On Saturday April 27th from 3-5 PM, we invite all townspeople to the Community Meeting House to identify your most valued places in Shrewsbury.

The results from the information gathered will be compiled digitally. The resulting maps will present a visual picture of what areas in Town are valued and why. When we overlap the digital images, the maps can show us where our most important places coincide and are complimentary and where they coincide and are conflicting. The information gathered will allow the priorities of the community to inform our future Town Plan.

Hosted by the Shrewsbury Planning Commission. For more information - shrewsburyvtpc@gmail.com.