



Times of Shrewsbury



April 2024

SHREWSBURY'S VIEW OF THE ECLIPSE

On Monday, April 8, 2024 a portion of Vermont will experience a total eclipse of the sun. The last total solar eclipse in Vermont was in 1932, and the next will be in 2106.

In Shrewsbury at 2:14pm a partial eclipse will begin, and at 3:27pm the sun will be 98.3% covered by the moon. The partial eclipse will continue until 4:35pm.

The sun will turn black and all will be dark. The temperature will drop and the birds will start singing as at sunset. If you have safe viewing equipment you will be able to see the sun's corona and outlines of the mountains on the moon.

Safe viewing is critical since even though the sun appears dark there is still enough UV radiation emitted to cause eye damage. Only during the brief moments of 100% totality in such places as nearby Middlebury will it be safe to view the eclipse directly. Although Shrewsbury will experience 98% of the eclipse, it will **not** be safe to look directly at the sun unprotected in Shrewsbury.



Shrewsbury is slightly out of the 108 mile wide path of totality Where the moon's shadow speeds thru Vermont at 2,600 mph

Other ways to project an image simply and safely of a solar eclipse onto a screen include:

Pinhole projection: A simple method to project an image of the Sun is to punch a pinhole or small hole on cardboard or stiff paper. Hold the cardboard so that it casts a shadow on a piece of white paper or a wall. Adjust the distance between the cardboard and the screen to focus the image.

Binocular projection: A pair of binoculars can project an image of the Sun. Point the binoculars at the Sun and adjust the focus until you see a clear image. Then, place a piece of white paper a few inches behind the eyepiece, and adjust the distance between the binoculars and the screen to focus the image.

Telescope projection: A telescope can be used to project an image of the Sun. Attach a white piece of paper or a screen to the eyepiece, and adjust the focus and distance between the telescope and the screen to project a clear image.

Viewing the Eclipse Safely

For direct viewing, get eclipse glasses. They should be certified to ensure quality. Purchase them online or locally for \$1-\$10. The sun will appear the size of a full moon, which is fairly small so you won't see much detail and only one person at a time can use them. Eclipse filters for telescopes and binoculars (~\$50) can also be used.

It's important that you should never look directly at the Sun without proper protection, even during a solar eclipse. These projection methods allow you to safely view the eclipse without risking damage to your eyes. The eclipse is a quick event, so find a good spot to watch, be ready, and enjoy safely!

~Article by Scott Garren

Watch for these cool Eclipse phenomena!

These sights appear in this order as totality sets in (and in reverse order as totality ends):

- **Shadow bands:** About a minute before totality, moving, wavy lines of alternating light and dark can be seen on the ground and along walls. These are the result of Earth's turbulent atmosphere refracting the last rays of sunlight.



Only view the sights below with protective eyewear



- **Diamond ring:** Seen about 10 to 15 seconds before and after totality, the solar corona (the outer atmosphere of the Sun) becomes visible. Together with the single jewel of light from the Sun, it creates the well-known diamond ring effect.
- **The Sun's corona:** As the diamond ring fades, the outermost part of the Sun's atmosphere becomes more prominent. It is visible as a faint ring of rays surrounding the silhouetted Moon and is around 200–300 times hotter than the Sun's surface—its temperature can reach over 1 million °C (1.8 million °F).
- **Baily's beads:** About five seconds before totality, Baily's beads appear. They are little bead-like blobs of light at the edge of the Moon created by the sunlight passing through gaps in the mountains and valleys on the Moon's surface.
- **The Sun's chromosphere:** The second most outer layer of the Sun's atmosphere gives out a reddish glow. It is only visible for a few seconds right after totality.

Tracking the movement of the Eclipse



As the eclipse moves northward in the United States, the speed increases while the width and time of totality decreases so that the longest viewing of the eclipse is in the southern part of the country. Examples of the width of path of totality, the speed of the moon's shadow, and the duration of totality below: *(all values are approximate)*

Dallas: Path 118 miles; Speed ~1,600 mph; ~4.5 minutes
 Burlington: Path 108 miles; Speed ~2,600 mph; ~3.5 minutes
 Newfoundland: Path 100 miles; Speed ~4,600 mph; ~3 minutes

At the program about the Eclipse at the Shrewsbury Library in December, Scott Garren suggested the following websites:

- To view the path of the moon's shadow moving across the U.S.: <https://www.greatamericaneclipse.com>
- More information about the eclipse: www.2scott.com
- View a Shrewsbury eclipse simulator: (info below from this website) https://eclipse2024.org/eclipse-simulator/2024/index.html?city_id=41190

Eclipse magnitude and obscuration info from website (above) tracking the effect in Shrewsbury, Vermont:



Magnitude (Mag): This is the amount of the Sun's diameter that's being covered by the Moon at each instant.

Obscuration (Obs): This is the area of the Sun's disk that's being covered by the Moon at each instant. This measurement has a more direct effect on how dark the eclipse will appear.

Stop by the
Shrewsbury Library
 to pick up your free
Eclipse glasses!
(Limit 4 per family)

TIMES OF SHREWSBURY

The Times of Shrewsbury is published monthly from February through December, and compiled by volunteers from material submitted by residents with the goal of informing townspeople of what is happening in Shrewsbury. The views and opinions expressed in articles are solely those of the author and not necessarily those of the editors.

All submissions must be accompanied by the name of the submitting person and are printed at the editors' discretion subject to editing for length and clarity. Letters to the Editor exceeding 350 words will be subject to editing for length. Any information piece or informational political letters (without specific party or vote appeal) will be subject to the guidelines previously described.

A writer of a letter that names a Shrewsbury resident or organization in a critical manner must get copies to the resident or organization, and to the Times by the 10th of the month prior to publication or it will not run. If the named person or organization indicates in writing to the writer and to the Times that they choose not to respond, the letter will run. If the named entity responds, the response and initial letter will run in the same issue.

There is no charge for: jokes, poems, nature reports, family event announcements, or feature articles or letters that are not commercial.

Articles and Advertisements: Deadline for submission is 5pm on the 20th of the month prior to publication; exceptions will be announced in the prior month's Times.

Ads in the Times are for area businesses, local non-profit events, and local ballot election advertisements.

Best Formats: Articles: Word or as an email message with no formatting. Photos: jpeg. Ads: jpeg or Word document.

Monthly advertising fees and relative sizes:

Full page	\$100	(7.5"w x 9.5"h)
Half page	\$60	(7.5"w x 4.5"h or 3.5"w x 9.5"h)
Quarter page	\$12	(7.5"w x 2.5" h; or, 3.5"wx 4.5"h)
Business card	\$6	(3.5"w x 2"h)
Classified ad	\$3	(15 words or less)

Payment due by the 20th of the month prior to publication.

5/1/2023

Chryl Martin

~ Rich Biziak

Times of Shrewsbury, P. O. Box 373, Cuttingsville, VT 05738

Email: shrewsburytimes@gmail.com

Online: www.shrewsburyvt.org and

<http://www.shrewsburyhistoricalsociety.com>

SHREWSBURY COMMUNITY CALENDAR

Mar 24	4pm	*Science Book Club discussion group at the Library
Mar 30	10am	*Easter Egg Hunt at Pierce's Store
Apr 6	1-3pm	Apple Tree Grafting Workshop (SAGE), at Russellville Schoolhouse (\$25 suggested donation)
Apr 7	3-5pm	*Contra dance at the Meeting House; donation suggested
Apr 13	7pm	Music Jam at Russellville Schoolhouse
Apr 14		*Docent training at Laurel Glen; contact Pam Monder at freddie.monder@gmail.com
Apr 14	4pm	*Writers Group meets at the Library
Apr 19	7pm	Art Group at Russellville Schoolhouse
Apr 20	1-2:30pm	Nutrient Dense Growing Techniques 101 (SAGE) at Russellville Schoolhouse
Apr 21	4pm	*Famous Book Club discussion group at the Library
Apr 26	4-6pm	*Wine tasting at Pierce's Store
Apr 27	3-5pm	*"Make your mark" on the most valued places in Shrewsbury at the Meeting House
Apr 28	4pm	* Science Book Club discussion group at the Library
Apr 29	6pm	*Laurel Glen Association meets at the mansion
May 4	8am-Noon	* GREEN UP DAY (8-10am Breakfast at Meeting House; 10am-12noon Transfer Station open)

*see elsewhere in newsletter for details

TIMES OF SHREWSBURY

online at
www.shrewsburyhistoricalsociety.com
 and
www.shrewsburyvt.org



Deadline for submission to *Times of Shrewsbury* is by 5:00pm on the 20th of each month.

REGULAR MEETINGS and EVENTS

Selectboard Meeting	1 st & 3 rd Wednesdays – 6:30pm at Town Office
Bone Builders	Tuesdays & Thursdays – Winter hours: 10 am at Meeting House
Development Review Board	4 th Wed -7pm at Town Office; check town website for agenda
Library Trustees Meeting	2 nd Tuesday – 7pm at Shrewsbury Library
Mill River Unified Union School Board Mtg	1 st Wed 7pm @ MRHS & 3 rd Wed. 7pm at MRHS unless otherwise warned
Planning Commission	2 nd & 4 th Tuesdays 7pm at Town Office
Prayer Shawl Group	4 th Tuesday at 12noon upstairs at the Meeting House
Religious Society of Friends (Quakers)	Sundays – 10am via Zoom; contact wildernessfriends@gmail.com
Shrewsbury Community Church	Sundays – 10:30am - Worship service
Shrewsbury Conservation Commission	No meetings until February 6, 2024 at 5:15pm, location TBD.
Shrewsbury Historical Society	No meetings until Spring 2024
Shrewsbury Historical Society Museum	Closed for Winter. Appointments only
Shrewsbury Singers	Sundays 9-10:20am and Wed 6:30-8:00pm @ Meeting House
Shrewsbury Sno-Birds	2 nd Tuesday – 7pm at Southside Steakhouse in Rutland
Shrewsbury Volunteer Fire Department	Thursdays – 7pm at the Cuttingsville Station

Shrewsbury Town Website: www.shrewsburyvt.org

Clerk's Office	492-3511	Mondays & Thursdays 8:30am-1pm; Wednesdays 1pm-6pm (Fax 802-492-3383)
Town Garage	492-3656	(Follow prompts to report roadway blockage on non-work days)
Listers	492-2009	Available by appointment
Treasurer's Office	492-3558	Monday 9am-11am
Transfer Station	492-3867	Sunday 8am-4pm ~ Wednesdays 12noon-6pm
Library	492-3410	Hours: Mon 10am-12noon; Tues 7-9pm; Wed 10am-5pm & 7-9pm; Thurs 7-9pm; Fri 10-12noon; Sat 10am-12noon
Meeting House	492-6050	Reservations: 492-3361 or julanne@vermontel.net
News Flash Email:	vtbenbeano@gmail.com or benbeano@vermontel.net	an email list for Urgent and reminder news information]
Cuttingsville Post Office	492-3585	<u>Window Hours</u> Mon-Fri 7:30am-10:30am and 11:30am-2:30pm; Sat 8am-11am <u>Lobby Hours</u> Mon-Fri 7:30am-5:00pm and Sat 7:30am-11am
Burn Permit:	Forest Fire Warden Kevin Brown 802-345-8668 or, Deputy Fire Warden Al Ridlon, Jr. 802-282-3642	
Animal Control Officer:	Adrienne Raymond 802-492-3578	
1 st Constable:	Aaron Haupt 558-9980	Game Warden: Tim Carey 793-2776
Emergency Management	Aaron Korzun 492-3362	Green Mountain Power outage 1-800-451-2877
Medical-Police-Fire Emergency	Dial 911	Ambulance 773-1700 Rutland Hospital 775-7111

[Updated 1/31/24]

SHREWSBURY SELECTBOARD MINUTES

The Selectboard meets the 1st and 3rd Wednesday at 7pm at the Town Office.

February 21st, 2024: Minutes of Selectboard Meeting

Present at meeting: Selectboard members: Aaron Korzun, Marc Cimonetti, Francis Wyatt. Administrative Assistant: Megan White. Road Commissioner: Jamie Carrara. Zoning Administrator Adrienne Raymond. Member of the public: Kimberly Williams

The meeting was convened at 6:35 PM.

Agenda: Motion made by A. Korzun to follow the agenda with the following additions:

1st and 2nd class liquor license for Pierce's Store. Certificate of Compliance for Town Road and Bridge Standards and Network Inventory. Seconded by M. Cimonetti. Approved.

Certificate of Compliance for Town Road and Bridge Standards and Network Inventory: We have adopted the standards; we don't have any changes. A. Korzun makes a motion to sign the Certificate of Compliance. Second by M. Cimonetti. Approved

Liquor license for Pierce's Store: Requesting approval for 1st and 2nd class liquor license. A. Korzun make a motion to approve the two-liquor license for Pierce's Store. Second by M. Cimonetti. Approved.

Town Highway Grant Program: The town has discussed and compiled a list of eight projects needing immediate attention due to structural reasons. Grant applications have begun. We are planning on applying for a Better Back Roads Grant, Grants in Aid -Structures, Storm Water Mitigation Grant. Will also be looking into new Grant programs to help cover project costs as we move forward this year.

Mill River Schoolboard Vacancy: Former board member Cindy has taken a new job for the district and has had to resign from The School Board. Kim Williams joins us with great interest in filling this vacancy. Kim has raised her son here in Shrewsbury who is now a freshman at Mill River High School. Kim has served on the Rutland hunger council Board and is currently serving on the Companions and Wholeness Board. Serving on The School Board would be a new experience for her, yet she is very excited and eager to learn. A. Korzun makes a motion to recommend Kim Williams as the new School board member. Second by F. Wyatt. Approved.

Town Meeting 2024: Discussed

New Business/Open to the Public

Review Minutes: A. Korzun made a motion to accept 2/7/2024 Selectboard meeting minutes. Second by F. Wyatt. Approved.

Review Orders: A. Korzun made a motion to approve Selectboard Orders #2a for \$3,318.52. and Road Orders # 2a for \$18,217.88. Seconded by M. Cimonetti. Approved

Adjourned at 8:10pm

Respectfully submitted, Megan White

These minutes are unofficial until approved by the Selectboard at the next scheduled meeting.

~~~~~

### March 6, 2024: Selectboard Meeting Minutes

**Present at meeting:** Selectboard members: Aaron Korzun, Francis Wyatt, Marc Cimonetti. Town Clerk: Rebecca Rice. Justice of the Peace: Barry Griffith.

**Members of the Public:** Laura Black

The meeting was convened at 6:30 PM

**Agenda:** Motion made by A. Korzun to follow the agenda with the additions of the following excess weight permits: Normandin Transit, J.P. Carrara and Sons, Steve Newton, rk Miles, Inc., Proctor Gas. F. Wyatt seconded. All in favor, motion approved.

**Selection of Chair:** F. Wyatt made motion to elect A. Korzun Selectboard Chair. M. Cimonetti seconded. Approved.

**Organization (Time & Place of Regular Meetings, Newspaper of Record, Places of Posting):** A. Korzun made a motion that the time & place of Selectboard meetings be 1<sup>st</sup> and 3<sup>rd</sup> Wednesdays of each month at 6:30 PM at the Town Office; Newspapers of record be Times of Shrewsbury and Rutland Herald; Places of posting be Town Office, Post Office, Pierces, Shrewsbury Meeting House, Transfer Station. M. Cimonetti seconded. Approved.

**Appointments:** A. Korzun made a motion to appoint Jamie Carrara for Road Commissioner, Aaron Korzun for Emergency Management Director, Marc Cimonetti for Emergency Management Coordinator, Davis Terrell for Energy Coordinator, Gerry Martin for Rutland Regional Ambulance Rep., Connie Youngstrom for Green-up Coordinator, Bert Potter for Transfer Station Admin., Steven Nicholson, Bert Potter, and Adrienne Raymond Fence Viewers, Greg Miller for Inspector of Lumber, Greg Miller for Weigher of Coal, Aaron Korzun for Act 64 Advisory Committee, Eldred French for Tree Warden, Bert Potter for SWAC Representative, Sharon Winnicki for Deputy Health Officer, Adrienne Raymond for Animal Control Officer, Marc Cimonetti for Rutland Regional Planning Commission Transportation Representative, Jack Perry for Regional Emergency Management Committee. F. Wyatt seconded. Approved.

A. Korzun made a motion to appoint Melissa Reichert and Ryan Fitzbeauchamp for Shrewsbury Planning Commission; Bruce Bullock and Mark Youngstrom for Development Review Board; Adrienne Raymond for Zoning Administrator; Liesbeth Van der Heijden for Meetinghouse Trustee; Elijah LaChance for Library Board Trustee. F. Wyatt seconded. Approved.

**Election Results:** Had a total of 360 voters. Discussed the various people elected on Town Meeting Day.

**Vacant Positions:** We still don't have someone for: Lister, 2<sup>nd</sup> Constable, 2 Cemetery Commissioners, Pound Keeper.

**Excess weight permits:** Fees paid and insurance in order. A. Korzun made a motion to approve excess weight permits for Normandin Transit, J.P. Carrara and Sons, Steve Newton, rk Miles, Inc., Proctor Gas, Phoenix Feeds & Nutrition, Champlain Construction, Belden Construction, Fabian Earth Moving, Connecticut Valley Trucking Inc., and Newport Sand and Gravel. F. Wyatt seconded. Approved.

**New Business:** Laura Black wants to put on the next Selectboard agenda to discuss ARPA funding and how to handle it, based on some advice from VLCT.

## SHREWSBURY SELECTBOARD MINUTES

(continued)

**Review Minutes:** A. Korzun made a motion to accept the 2/21/2024 Selectboard meeting minutes. Seconded by M. Cimonetti. Approved.

**Review Orders:** F. Wyatt made a motion to approve Selectboard Orders #3 for \$10,932.00 and Road Orders #3 for \$18,233.16. Seconded by M. Cimonetti. Approved. A. Korzun made a motion to authorize the Treasurer to transfer the FY 2024 Reappraisal Payment to Reserve funds. Seconded by M. Cimonetti. Approved.

**Adjourned** at 8:00 PM

*Respectfully submitted, Francis Wyatt*

*These minutes are unofficial until approved by the Selectboard at the next regularly scheduled meeting.*

*Editor's Note: The minutes have been edited for brevity but not content. For complete minutes, go to the Town website [www.shrewsburyvt.org](http://www.shrewsburyvt.org)*

### Dog & Wolf-Hybrid Licenses

Animal Licenses are due on APRIL 1. License your dog/wolf-hybrid to avoid late fees. Be sure your dog wears the license tag to help with identification if the dog is found wandering.

Fees are as follows:

Spayed or neutered dogs \$9;

Intact dogs \$13

After April 1 fees are: spayed or neutered dogs \$13; intact dogs \$17. Licenses may be obtained by mail (9823 Cold River Rd), e-mail ([shrewsburyclerk@vermontel.net](mailto:shrewsburyclerk@vermontel.net)), or at the town office during regular business hours. Be sure to provide a copy of any new rabies certificate

### Vermont State Senators:

Brian Collamore: [bcollamore@leg.state.vt.us](mailto:bcollamore@leg.state.vt.us)

Terry Williams: [twilliams@leg.state.vt.us](mailto:twilliams@leg.state.vt.us)

David Weeks: [dweeks@leg.state.vt.us](mailto:dweeks@leg.state.vt.us)

### Vermont State House of Representative:

[RepLoganNicoll@gmail.com](mailto:RepLoganNicoll@gmail.com)

*The Vermont General Assembly is in session January thru June. To view committee member-ships, bills that have been introduced, track each bill's progress, and review committee agendas go to [www.leg.state.vt.us](http://www.leg.state.vt.us). During the week you can contact your legislator by leaving a message at the State House by calling 1-800-322-5616 or 828-2228 (the Sergeant-At-Arms' Office).*

### United States Senators:

**Senator Peter Welch**

[www.welch.senate.gov](http://www.welch.senate.gov)

Vermont Office: (800) 642-3193

Washington D.C. Office: (202) 224-4242

**Senator Bernie Sanders**

[www.sanders.senate.gov/contact](http://www.sanders.senate.gov/contact)

Vermont Office: (800) 339-9834

Washington D. C. Office: (202) 224-5141

### United States House of Representative:

Representative Becca Balint

Vermont Office: 347-461-4982

Washington D. C. Office: (202) 225-4115

*Revised 7/1/2023*

## GREEN UP DAY 2024

SATURDAY ~ MAY 4

8am - 10am

### Meeting House Breakfast

Choose your Road, Take Bags,

Get your Raffle Ticket!

### Head out to Green Up!

Please wear gloves! Separate recyclables if you can!

10am -12noon

### Bring Collections to Transfer Station

Celebrate your good deed  
and collect prizes if you're a winner!





## 2024 Presidential Primary Election Results

### DEMOCRATIC BALLOTS

|                         |     |
|-------------------------|-----|
| JOSEPH R. BIDEN         | 116 |
| MARK STEWART GREENSTEIN | 0   |
| JASON MICHAEL PALMER    | 1   |
| DEAN PHILLIPS           | 3   |
| CENK UYGUR              | 2   |
| MARIANNE WILLIAMSON     | 7   |

### WRITE-IN

|                |     |
|----------------|-----|
| ROBERT KENNEDY | 3   |
| NIKKI HALEY    | 2   |
| RASHEDA TLAIB  | 2   |
| SCOTT NELSON   | 1   |
| UNDERVOTE      | 14  |
| TOTAL          | 151 |

### REPUBLICAN BALLOTS

|                 |     |
|-----------------|-----|
| RYAN BINKLEY    | 0   |
| CHRIS CHRISTIE  | 2   |
| RON DESANTIS    | 3   |
| NIKKI HALEY     | 74  |
| VIVEK RAMASWAMY | 2   |
| DONALD TRUMP    | 96  |
| UNDERVOTE       | 9   |
| TOTAL           | 186 |

## MILL RIVER UNIONIFIED UNION SCHOOL DISTRICT

ARTICLE 4: Shall the voters of the Mill River Unified Union School District approve the Board to expend \$21,333,576, which is the amount the school board has determined to be necessary for the ensuing fiscal year? (By Australian Ballot). It is estimated that this proposed budget, if approved, will result in education spending of \$13,019.22 per equalized pupil.

|         |     |
|---------|-----|
| YES     | 925 |
| NO      | 825 |
| BLANK   | 21  |
| SPOILED | 7   |

ARTICLE 5 Shall the voters authorize the District to transfer current surplus funds to the building sinking fund in the amount of \$300,000? (By Australian Ballot).

|         |      |
|---------|------|
| YES     | 1133 |
| NO      | 606  |
| BLANK   | 36   |
| SPOILED | 3    |

## SHREWSBURY ELECTION RESULTS 2024 ANNUAL MEETING 2024

- To elect all town officers as required by law: VOTE FOR NOT MORE THAN 1

### One Moderator: 1-year term

|               |     |
|---------------|-----|
| Total votes   | 323 |
| Eldred French | 319 |
| Write In      | 4   |

### One Selectboard Member: 3-year term

|              |     |
|--------------|-----|
| Total votes  | 321 |
| Aaron Korzon | 312 |
| Write In     | 9   |

### One Town Clerk: 3 Year Term

|                   |     |
|-------------------|-----|
| Total votes       | 337 |
| Rebecca A. Rice   | 197 |
| Martha A. Sirjane | 138 |
| Write in          | 2   |

### One Town Treasurer: 3 Year Term

|               |     |
|---------------|-----|
| Total votes   | 334 |
| Linda McGuire | 332 |
| Write In      | 2   |

### One Auditor: 3-year term

|                       |     |
|-----------------------|-----|
| Total votes           | 312 |
| Sanford (Sandy) Bragg | 312 |
| Write In              | 0   |

### One Lister: 3-year term

|               |     |
|---------------|-----|
| Total votes   | 320 |
| Clara Krueger | 320 |
| Write in      | 1   |

### One Lister: 1 year of a 3-year term

Write in No write in received the requisite number of votes

### One Delinquent Tax Collector: 3-year term

|                  |     |
|------------------|-----|
| Total votes      | 310 |
| Steven Nicholson | 310 |
| Write in         |     |

### One 1st Constable: 1-year term

|             |     |
|-------------|-----|
| Total votes | 308 |
| Aaron Haupt | 306 |
| Write In    | 2   |

### One 2nd Constable: 1 year term

|             |    |
|-------------|----|
| Total votes | 23 |
|-------------|----|

Write In: No candidate received requisite number of votes

### One Cemetery Commissioner: 3-year term

|                |    |
|----------------|----|
| Total votes    | 37 |
| Write In       |    |
| Bennie Carrara | 19 |

No other candidate received requisite number of votes

### One Cemetery Commissioner: 2 years of a 3-year term

Total votes 22

Write In: No candidate received the requisite number of votes.

### One Cemetery Commissioner: 1 year of a 3-year term

Write In: No candidate received requisite number of votes.

### One Mill River Unified Union School Director

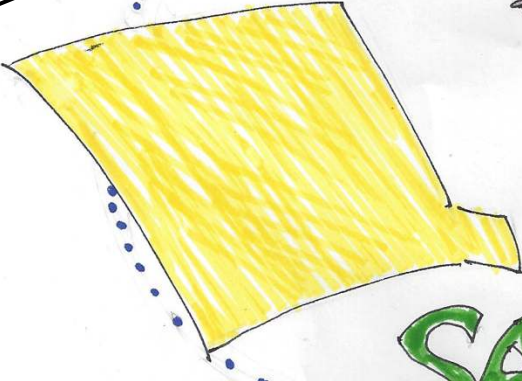
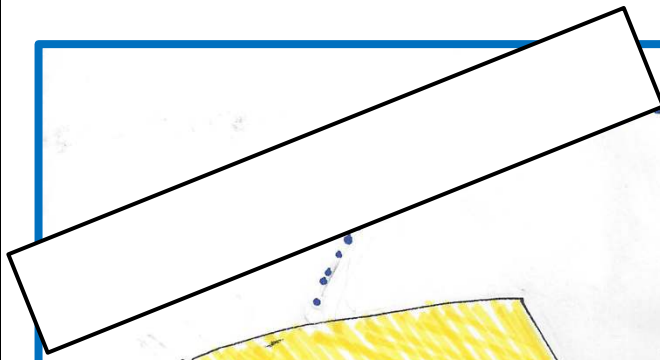
|                  |     |
|------------------|-----|
| 3-year term      |     |
| Total votes      | 305 |
| Stephen Abatiell | 303 |
| Write In         | 2   |

## SHREWSBURY ELECTION RESULTS 2024

### ANNUAL MEETING 2024

- |                                                                                                                                                                                                                                                                                        |                                                                                                                                                                                                               |
|----------------------------------------------------------------------------------------------------------------------------------------------------------------------------------------------------------------------------------------------------------------------------------------|---------------------------------------------------------------------------------------------------------------------------------------------------------------------------------------------------------------|
| <p>2 Shall the Town approve a total general fund expenditure of <b>\$1,401,732</b> of which <b>\$971,027</b> shall be raised by taxes and <b>\$430,705</b> by non-property tax revenues and surplus funds and reserve funds?<br/>Total votes     355     Yes     262     No     93</p> | <p>16 Shall the Town raise, appropriate and expend <b>\$130</b> to help support the Retired and Senior Volunteer Program (RSVP)?<br/>Total votes     346     Yes     286     No     75</p>                    |
| <p>3 Shall the Town raise, appropriate and expend <b>\$1,500</b> for the Town Office Reserve Fund?<br/>Total votes     356     Yes     282     No     74</p>                                                                                                                           | <p>17 Shall the Town raise, appropriate and expend <b>\$700</b> to help support the Southwestern Vermont Council on Aging?<br/>Total votes     348     Yes     270     No     78</p>                          |
| <p>4 Shall the Town raise, appropriate and expend <b>\$2,500</b> for the Town Garage Reserve Fund?<br/>Total votes     357     Yes     305     No     52</p>                                                                                                                           | <p>18 Shall the Town raise, appropriate and expend <b>\$1,192</b> to help support Rutland Mental Health Services?<br/>Total votes     346     Yes     263     No     83</p>                                   |
| <p>5 Shall the Town raise, appropriate and expend <b>\$1,000</b> for the Town Office Equipment Reserve Fund?<br/>Total votes     355     Yes     286     No     69</p>                                                                                                                 | <p>19 Shall the Town raise, appropriate and expend <b>\$150</b> to help support NewStory (formerly the Rutland County Women's Network and Shelter)?<br/>Total votes     347     Yes     277     No     70</p> |
| <p>6 Shall the Town raise, appropriate and expend <b>\$85,000</b> for the Town Road Equipment Fund?<br/><br/>Total votes     355     Yes     305     No     50</p>                                                                                                                     | <p>20 Shall the Town raise, appropriate and expend <b>\$600</b> to help support BROCC-Community Action in Southwestern Vermont?<br/>Total votes     347     Yes     235     No     112</p>                    |
| <p>7 Shall the Town raise, appropriate and expend <b>\$1,000</b> for the Town Records Restoration Reserve Fund?<br/>Total votes     352     Yes     271     No     81</p>                                                                                                              | <p>21 Shall the Town raise, appropriate and expend <b>\$400</b> to help support the Rutland County Parent Child Center?<br/>Total votes     346     Yes     245     No     101</p>                            |
| <p>8 Shall the Town raise, appropriate and expend <b>\$35,000</b> for the Shrewsbury Volunteer Fire Department Equipment Reserve Fund?<br/>Total votes     354     Yes     298     No     56</p>                                                                                       | <p>22 Shall the Town raise, appropriate and expend <b>\$250</b> to help support the Vermont Family Network?<br/>Total votes     340     Yes     224     No     116</p>                                        |
| <p>9 Shall the Town raise, appropriate and expend <b>\$17,000</b> for the Shrewsbury Community Meeting House?<br/>Total votes     357     Yes     273     No     84</p>                                                                                                                | <p>23 Shall the Town raise, appropriate and expend <b>\$150</b> to help support the Rutland County Humane Society?<br/>Total votes     348     Yes     276     No     72</p>                                  |
| <p>10 Shall the Town raise, appropriate and expend <b>\$35,000</b> for the Shrewsbury Volunteer Fire Department Operating Fund?<br/>Total votes     356     Yes     312     No     44</p>                                                                                              | <p>24 Shall the Town raise, appropriate and expend <b>\$170</b> to help support the Vermont Center for Independent Living?<br/>Total votes     346     Yes     252     No     94</p>                          |
| <p>11 Shall the Town raise, appropriate and expend <b>\$7,500</b> for the Shrewsbury Library?<br/>Total votes     352     Yes     277     No     75</p>                                                                                                                                | <p>25 Shall the Town raise, appropriate and expend <b>\$400</b> to help support the Child First Advocacy Center?<br/>Total votes     343     Yes     251     No     92</p>                                    |
| <p>12 Shall the Town raise, appropriate and expend <b>\$2,500</b> for the Shrewsbury Historical Society?<br/>Total votes     348     Yes     250     No     98</p>                                                                                                                     | <p>26 Shall the Town raise, appropriate and expend <b>\$500</b> to help support the American Red Cross of NH/VT?<br/>Total votes     348     Yes     266     No     82</p>                                    |
| <p>13 Shall the Town raise, appropriate and expend <b>\$250</b> to help support the Rutland Natural Resources Conservation District?<br/>Total votes     348     Yes     250     No     98</p>                                                                                         | <p>27 Shall the Town raise, appropriate and expend <b>\$500</b> to help support Vermont Adult Learning?<br/>Total votes     345     Yes     241     No     104</p>                                            |
| <p>14 Shall the Town raise, appropriate and expend <b>\$2,526</b> to help support VNA &amp; Hospice of the Southwest Region?<br/>Total votes     349     Yes     281     No     105</p>                                                                                                | <p>28 Shall the Town raise, appropriate and expend <b>\$500</b> to help support Vermont Farmers Food Center?<br/>Total votes     345     Yes     263     No     82</p>                                        |
| <p>15 Shall the Town raise, appropriate and expend <b>\$150</b> to help support the Green Up Vermont organization?<br/>Total votes     348     Yes     273     No     68</p>                                                                                                           | <p>29 Shall the taxes be postmarked on or before, or in the hands of the Treasurer no later than 7:00 P.M., Friday, October 4, 2024.<br/>Total votes     346     Yes     318     No     28</p>                |





WHAT  
SHREWSBURY PLACES  
DO YOU LOVE?

SAT. APRIL 27  
3~5 PM

SHREWSBURY MEETING HOUSE  
★ MAKE YOUR MARK!  
Community Values Mapping

HOSTED BY SHREWSBURY PLANNING COM.

We want to know what is important  
to YOU as we prepare to update  
our TOWN PLAN. Come help mark  
our MAPS!

★ SNACKS ★



**Saturday April 27**

**3 - 5pm**

**Shrewsbury Community Meeting House**

## **MAKE YOUR MARK!!**

### **MAKE YOUR MARK IN SHREWSBURY!**

*What places in Shrewsbury do you love?*

*What do you value about these places?*

On Saturday April 27 from 3-5pm, we invite all townspeople to the Community Meeting House to identify your most valued places in Shrewsbury. We will provide large paper maps, and color markers. We need you to make your marks on the Shrewsbury map!

The results from the information gathered will be compiled digitally. The resulting maps will present a visual picture of what areas in Town are valued and why. When we overlap the digital images, the maps can show us where our most important places coincide and are complimentary and where they coincide and are conflicting. The information gathered will allow the priorities of the community to inform our future Town Plan.

This event is hosted by the Shrewsbury Planning Commission. The process is called 'Community Values Mapping.' It was originally developed by the Community Wildlife Program, a division of Vermont Fish & Wildlife Department, and many of these events have been held in Vermont towns over the past few years.

For more info email - shrewsburyvtpc@gmail.com, or contact a Planning Commissioner.

## **LETTER TO THE EDITORS**

### **Dear Shrewsberries,**

On March 5 I had the pleasure of sitting with Taffy Maynard at the polls where she was greeting and passing out "I Voted" stickers to departing voters. It was fun visiting and talking about the "olden days" at the Shrewsbury Mountain School.

We both had served on the school board when the new school was taking shape. It would gather Pre-K through 6<sup>th</sup> grade under one roof. As teachers there we were privileged to experience some of its astonishing history. It was fun talking with voters who stopped to visit. Many of them had been our students!

Plans are afoot to celebrate the school's first 50 years. There's much to celebrate: accomplishments of our students and graduates, a succession of outstanding educators, innovative and successful programs and projects, special guests, storms of all sorts weathered.

Please share a story from your experiences at the Mountain School: a memorable event, a comical experience, a proud accomplishment (don't be shy), a challenge, inspirational teacher, a special treasured memory, drawings, photos, poems, songs! Send your original essay (max. 200 words), poem, song, drawings, photos as a PDF file to freddie.monder@gmail, or hard copy to Grace Brigham, 262 Shunpike Rd., Shrewsbury, VT 05738. Best Wishes and Thanks!

*~Grace Brigham*

### **Dear Fellow Residents,**

I want to thank everyone that voted for me on Town Meeting Day and called to offer their support. I also want to congratulate Becca Rice on her win as our new official Town Clerk. She will serve the town well and I am happy to know that she's already enjoying the position. I'd be remiss not to give a shout out to Betsy Jesser and Mark Goodwin. Our town would have been in trouble without their guidance during the election, and over many years.

As I mentioned in the January issue of the Times, I looked forward to a chance to meet those of you from town whom I do not know. Having just taken a position at Pierce's Store I still have the chance. I find the new manager, Rob Jaime's enthusiasm infectious, vision for the store exciting, and appreciate his attitude of gratitude. What I didn't note in the Times, was that I considered the proximity of the Town Office to Pierce's a perk; checked that off too. So, it's wins all the way around. Hope to see you once again – or meet you – at the store! Happy Spring Everyone!

*~Martha Sirjane*

### **Thanks for Member Owners**

Pierce's Board would like to thank all of the member/owners who attended the Annual Meeting of SCPS on March 8. We greatly appreciate all of your helpful suggestions at the meeting and your ongoing support of our wonderful little store. It was especially nice to share a meal with many of you before the meeting began.

Special thanks to all of our volunteers and paid staff for showing up every day and keeping the doors open. We hope everyone in town will make an effort to come by the store and welcome our new manager, Rob Jaimes. Be sure to sample some of the wonderful food coming out of his kitchen while you are there! Happy Spring. See you in the store.

*~Submitted by Lily French, Board President*

**WIRENUTS  
ELECTRICAL  
LLC**

bbates@vermontel.net

**REBECCA BATES  
LICENSED  
ELECTRICIAN  
802-492-3406  
802-353-4376**



## SHREWSBURY VOLUNTEER FIRE DEPARTMENT

In Shrewsbury, March means Maple. That makes it a busy month for many of our maple producing members – you have to collect the sap when it is flowing and boil it down while you can. How many gallons of maple syrup will our members make this season? Look for the answer in the next edition of the Times.

We began the month saying goodbye to member Phillip Severy, Jr. Phil joined the Department as a Junior Firefighter at age sixteen, and promptly demonstrated his commitment by attending the weeklong Cadet Academy run by the Vermont State Firefighters Association in 2019. After five years with us, Phil is now taking his dedication to service and safety to the next level with the United States Coast Guard. On March 4, Phil started his eight-week basic training course at the Coast Guard Training Center at Cape May, New Jersey. In time, Phil hopes to become a Coast Guard Rescue Swimmer. Achieving that goal will require physical and mental toughness – qualities which Phil has developed and demonstrated as a volunteer firefighter with SVFD. “Semper Paratus (Always Ready), Phil! We wish you the best of luck with your career.

Our volunteer members know that emergencies can arise at any hour -- even in the middle of the night. Your Fire Department has received two such calls so far in March. The first was in the early morning hours of March 2, for a car on fire on the Old Turnpike Road. The Mt. Holly Fire Department summoned SVFD to provide mutual aid assistance, and members responded. A second call came in at 3am on March 11 from the Old Plymouth Road, reporting an odor in the residence and a nauseous occupant. SVFD and Regional Ambulance Service responded. Fire Department gas meters were deployed to test the residence for toxic gasses. This time, fortunately, with negative results. If you have a similar situation, do not hesitate to dial 911 to summon us. Evacuate the building until our volunteers can arrive and investigate. Always better safe than sorry!

The ground is white outside as this article goes to press. When the snow disappears, spring cleaning activities are sure to follow. Remember that a permit is required for outdoor burning. Information about burn permits and how to get one appears below. Until next time:

### STAY FIRE SAFE

*Submitted for SVFD by Barry Griffith*



### BURN PERMITS

If you are plan to burn brush you **MUST** call for a burning permit. **Contact Forest Fire Warden Kevin Brown 802-345-8668 or Deputy Forest Fire Warden Al Ridlon, Jr 802-282-3642.** The landowner is responsible to control a brush fire, ensure you have proper tools, water supply, and people to assist in containing the fire.

## LAUREL GLEN ASSOCIATION REPORT



The Laurel Glen Association (LGA) is thinking about the Mansion and spring cleaning! Look for dates in the May edition of the Times!

### Sunday, April 14

Docent training takes place on Sunday, April 14 at the Mansion or off-site depending on weather. Interested in becoming a docent at Laurel Glen? Contact Pam/Freddie

Monder at [Freddie.monder@gmail.com](mailto:Freddie.monder@gmail.com) We ask you to commit to two to three events this year (May–Oct).

### Monday, April 29

LGA meets at the Mansion on Monday, April 29 at 6pm to discuss upcoming events.

### Saturday, May 18

We are excited to partner with Cindy Cameron, Town Historian from Stony Creek, NY, (Mr. Bowman's other home). On Saturday, May 18, Stony Creek will offer an “Other Side of the Creek” event, free to the public 11am–3pm. There will be tours of the sites of the tannery and other significant places. The John P. Bowman hand pumper (firefighting equipment) will make an appearance!

### Sunday, May 19, from 2-4pm

Cindy and members of the Warren County Historical Society visit Laurel Glen on Sunday, May 19 from 2-4pm. Members of the Board of Trustees will give an introduction to the Mansion and Mr. Bowman's time in Cuttingsville. This is followed by an open house and tour of the cemetery. This event is free and open to the public.

### Monday, May 27

The Mansion will be open for tours on Monday, May 27, (Memorial Day) from 12noon–3pm. Come visit the beautiful home of John P. Bowman in the heart of Cuttingsville. Contact Freddie Monder to carpool to Stony Creek on May 18.

**DID YOU KNOW???** The only closet in the “upstairs” side of the house is in the guest room, perhaps so visitors could store bags. A popular myth that homes in the 18th and 19th centuries did not have many closets because they were taxed as rooms is **NOT** true. People had less clothing, and they preferred the flexibility of movable armoires over fixed closets.

*~Submitted by Pam Monder*



### PVF Services LLC

Excavation, Trucking, driveway repair, site prep, building removal, brush grinding and much more!

**Neal and Chad**

1368 Lincoln Hill

Cell 802 236 8105

Shrewsbury Vt, 05738

Office 802 492 3364

[sharrowmaple@gmail.com](mailto:sharrowmaple@gmail.com)



# BE TICK SMART



PROTECT • CHECK • REMOVE • WATCH



## Blacklegged Tick

Spreads Lyme disease, Powassan virus, babesiosis, anaplasmosis, & *Borrelia miyamotoi*

- Over 99% of tickborne diseases reported in Vermont are caused by this tick
- Ticks can be as small as a poppy seed

## Other disease-spreading ticks in Vermont



American Dog Tick



Woodchuck Tick



Lone Star Tick

For more information on tickborne diseases:  
**[healthvermont.gov](http://healthvermont.gov)**

## PROTECT

- Use an EPA-approved tick repellent on skin
- Apply permethrin to clothing
- Wear light-colored pants and long sleeves

## CHECK

- Perform daily checks on yourself, your children and pets
- Shower soon after spending time outdoors

## REMOVE

- Use tweezers to grab tick close to skin
- Pull tick straight up, do not twist
- Wash hands & bite area with soap & water
- Put clothing in dryer for 10 minutes on high

## WATCH

- Watch for symptoms of tickborne diseases, such as fever, muscle aches, fatigue and joint pain
- Most Vermonters with Lyme disease develop a rash, but 30% do not
- If you develop any of these symptoms, contact your health care provider

**DO NOT** USE PETROLEUM JELLY, A HOT MATCH, NAIL POLISH, OR OTHER PRODUCTS TO REMOVE A TICK.



## Tis the Season

Your Conservation Commission wants to remind our community that Invasive Plant Season is soon upon us. Unlike Stick Season or Mud Season, both mercifully brief, the season when invasive plants can be identified and dealt with runs from sometime in April to sometime in November! This is a lengthy time for us to make progress in the quest to lessen the impact of harmful plants on our forests, fields and roadways. Now, when I say

"us" I don't mean the conservation commission, I mean the people of our town, the Community! We are willing and able to pull together for many important causes, and I'll hope this can be one of them.

The harm from invasive plants is sometimes obvious, as when Oriental Bittersweet climbs and strangles a healthy tree, or your child unwittingly gets into a patch of Poison Parsnip and suffers a blistering rash. The harm is often less visible to us, as when a plant that is an important food for muskrats or caterpillars is replaced by one that offers nothing of value to the habitat. A recognized threat to bio-diverse ecosystems, invasive plants are characterized by early, aggressive growth, one reason for their success in dominating formerly diverse areas. Unfortunately, the leaves of woody-stemmed Bush Honeysuckle and the rosettes of Garlic Mustard are some of the first greenery that you will see in Spring. In Fall also, leaves will remain green into November.

The management of invasive plants is a process - it does proceed toward allowing displaced native plants to re-establish and flourish. So, we continue to work on Garlic Mustard, Wild Chervil, Poison Parsnip and Purple Loosestrife, building on past efforts. While most visible along our roadsides, we will also be working in fields, wetlands and woodland areas. A cohort of people have agreed to be called upon from time to time to join in a group action to remove an invasive plant in a particular spot. If you would be willing to be a part of that or would just like to receive occasional updates on our work, please contact me and I will add you to the email list. There is never an obligation! What with people's crazy different schedules and obligations, it can be difficult to gather a sufficient force to get the job done, so additional possible volunteers will be greatly appreciated.

More and more landowners are taking the initiative to have their properties assessed and management plans prepared by knowledgeable professionals. They usually recommend a mix of chemical and mechanical methods to manage harmful plants. Travis Hart, wildlife biologist with Vermont Fish & Wildlife, makes himself available to landowners who want to know what problem plants are on their property and what they can do about them. There is no charge for him to come and walk your property with you. His role is advisory, aimed at pointing you toward further expertise and possible funding for habitat projects through the Natural Resource Conservation Service, or NRCS, an agency of the U.S. Dept. of Agriculture.

You do not have to be a landowner or a part of any group to take action on invasive plants! I can imagine if each family in Shrewsbury spent just one hour per week removing harmful plants around their home or somewhere else in town, the problem would diminish rapidly. I Can't imagine how anything could resist us! Except, admittedly, Japanese Knotweed and Multiflora Rose. They present such a huge challenge that the SCC focuses on the more possible plants for now.

I encourage everyone to become familiar with some of the harmful plants that threaten our biodiverse ecosystems. Next month I will share information on several as well as advice for successful removal.

~Article by Pam Darrow, Shrewsbury Conservation Commission



# SHREWSBURY LIBRARY

Library News Submitted by Joan Aleshire

## LIBRARY & FOOD SHELF HOURS

Monday 10 a.m. to 12 p.m.

Tuesday 7 p.m. to 9 p.m.

Wednesday 10 a.m. to 5 p.m. & 7 p.m. to 9 p.m.

Thursday 7 p.m. to 9 p.m.

Friday 10 a.m. to 12 p.m.

Saturday 10 a.m. to 12 p.m.

Thank you for staying away if you're not feeling well, and for wearing a mask if you need to protect yourself and others.

To search the Library Catalog, put a hold on a book or DVD in our collection, and get the latest Library news, please visit our website: [www.shrewsburylibrary.org](http://www.shrewsburylibrary.org).

MANY THANKS to Shrewsbury voters, who approved our level-funding request again this year! We're proud to serve the Town, and to receive support for basic operating expenses.

## SAFE SOLAR ECLIPSE VIEWING!

The Library has received special glasses for viewing the complete solar eclipse on April 8. Please stop in to pick up yours; there's a limit of 4 per family to make sure there are enough to go around.

## Coming Events:

Sunday, April 14 @ 4pm: WRITERS' GROUP CELEBRATES NATIONAL POETRY MONTH: Members of the Library group will read their work, and welcome your attendance! Please contact Penelope Weiss ([pw@earthlink.com](mailto:pw@earthlink.com)) or Joan Aleshire ([joanaleshire@vermontel.net](mailto:joanaleshire@vermontel.net)) for information.

## Continuing Programs:

Sunday, April 21 @ 4pm: FAMOUS BOOKS BOOK CLUB: We'll discuss James Baldwin's *Giovanni's Room*. Please contact Joan if you need a copy of the book: [joanaleshire@vermontel.net](mailto:joanaleshire@vermontel.net)

Sunday, April 28 @ 4pm: SCIENCE BOOK CLUB. Best Science & Nature Writing 2023: Third Discussion. E-books and print copies are available. Please contact Margery Salmon if you need either: [salmonm@vermontel.net](mailto:salmonm@vermontel.net)

STORY HOURS for KIDS (babies & up), PARENTS, GRANDPARENTS & CAREGIVERS: Please contact the Library (802 492-3410) or Pam Grace (802 492-3529) or [pamgrace@vermontel.net](mailto:pamgrace@vermontel.net) if you would enjoy coming to a story hour on a Saturday morning as a reader or listener.

**ROKUs** are still on trial for the next month! Please check out a device if you'd like to see this offering continue.

## New Books include:

- *Martyr!* by Kaveh Akbar: A first novel by this acclaimed poet, about addiction, recovery, and creativity.
- *Hard by a Great Forest* by Leo Vardiashvili: A novel about the search for a missing father, set in the Republic of Georgia: poignant, comic, riveting.
- *The Essential Harlem Detectives*: A Library of America compilation of four crime novels by Chester Himes: Essential reading for lovers of thrillers.
- *Find Me the Votes: A Hard-Charging Georgia Prosecutor, A Rogue President, and the Plot to Steal an Election*, by Michael Isikoff and Daniel Klaidman: a meticulously detailed account by two veteran journalists, about the disputed 2020 election results in the state of Georgia.

# ROKU

Now available for checkout at the  
Shrewsbury Library

The library is offering two Roku devices loaded with Netflix and DisneyPlus for week long checkouts.

Roku can be used on any "smart" TV. Instructions included with the Roku. We will not be providing any further technical help than the instruction sheets included with the checkout, and volunteers will not be providing technical support.

We are doing a 3-month trial, so check them out if you would like to see this continue!

## Wind Turbines v Birds of Prey

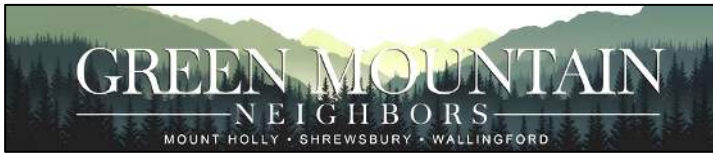
(An excerpt from *An Immense World* by Ed Yong, page 69)

"Rising high on columns of warm air, griffon vultures soar over rolling landscapes in search of food. Since they can spot carcasses on the ground, they should easily be able to see large obstacles ahead of them. And yet vultures, eagles, and other large raptors often fatally crash into wind turbines. In one Spanish province alone, 342 griffon vultures collided with wind turbines over a 10-year period. How could birds that fly by day and have some of the planet's sharpest eyes fail to avoid structures so large and conspicuous?"

Scientists discovered that a vulture's visual field covers the space on either side of its head but has large blind spots above and below. When it flies, it tilts its head downward, so its blind spot is now directly ahead of it. This is why vultures and eagles crash into wind turbines. While soaring, they aren't looking at what is right in front of them. For most of their history, they never had to. These birds would never have encountered an object so high and large right in their flight path.

The birds' view is not just an elevated version of a human one. The human visual world is in front, and the humans move into it. The avian world is around, and birds move through it."

~Submitted by Marilyn Dalick



### Yes, Green Mountain Neighbors is ready for you!

Whether you need a ride to a doctor's appointment, a grocery pickup, or are simply seeking something to do with other people, GMN can help you as of March 31!

We've prepared a 10-step guide to becoming a member, and a separate, 6-step guide to requesting a service once you are a member, as well as instructions to become a volunteer. Open the GMN website at <https://greenmountainneighbors.org/>, select the tab for Membership or Volunteer and follow the prompts to complete the application.

I hope that you have seen that GMN is sponsoring game afternoons. There is one set for Monday, March 25 from 1 to 3pm at the Gilbert Hart Library in Wallingford. Give it a try! We'll set another couple of dates at the Board Meeting on March 27 so stay tuned. By the way, the website includes an "Events" tab where you can see what's scheduled.

Copies of the guide to memberships and volunteering will be at all the libraries, town offices, stores and other public locations in Mount Holly, Shrewsbury, and Wallingford.

If you have questions, please contact

Linda Fontana at [Lafhaha\\_2000@yahoo.com](mailto:Lafhaha_2000@yahoo.com)

Sally Deinzer at [sjdad3@gmail.com](mailto:sjdad3@gmail.com)

~Submitted by Sally Deinzer

~~~~~



Walking at Night on Shrewsbury Roads

Many Shrewsbury roads have low vehicle traffic so it makes them inviting for those who enjoy walking for exercise. Be sure to dress to increase visibility!

- Wear light colored clothing
- Wear a reflective belt, vest, or lighted clothing
- Walk as close as possible to the side of the road especially when a vehicle is approaching.
- If you are walking with someone, walk on the same side of the road.

All Cleaned Up

Wash
America,
So
Hope
Will
Alter
Society.
Hereafter
We
Are
Supporting
Humanity.
~ Thomas Hartigan

Pill

Look there was a sun today
Just like a little pill
It hasn't been around much lately
But this will fit the bill
Here's hoping that tomorrow brings
Us more brightness to be seen
The sunlight helps our hearts to sing
And brings to the mind a sheen
~Thomas Hartigan

No Applause

Do not take a curtain call
The human travesty casts a pall
Defense to retribution to genocide
Where else can they run and hide
An eye for an eye and far beyond
Our eyes closed across the ponds
What's good for the goose
Is not good for the gander
Let armies loose
To the hawks they pander
But what about the doves
Of humanity
Who hold peace and love
Above the insanity
Is there a place where it ever will end
Is this what every future portends
Will we humans ever learn
Trusting one another can be earned
~Thomas Hartigan

Game of Life

In life
Trying to even the score
Leads to less love for humanity
Not a bit more
Rather
Let us consider, then forgive
And use this as a better way
For us to live
~Thomas Hartigan



Shrewsbury Mountain School PTO Basket raffle and silent auction

Sunday, May 11

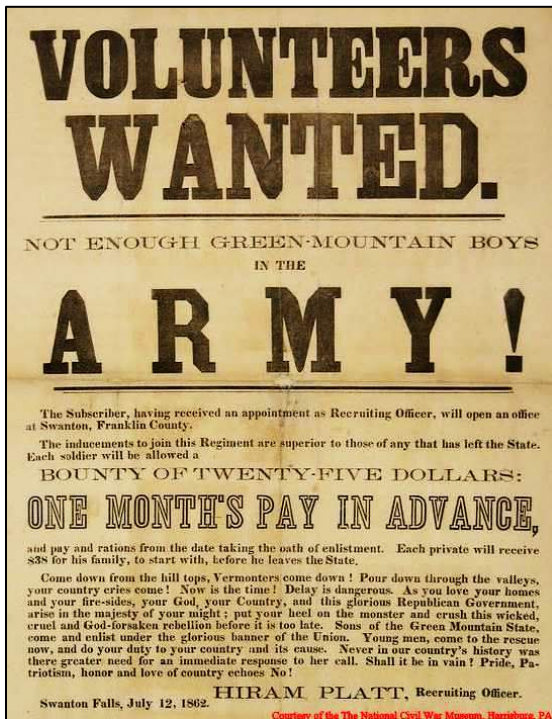
Doors open at 1pm
Drawing starts at 3pm

Must be present to win

Shrewsbury Meeting House
88 Lottery Rd, Shrewsbury VT
Light concessions will be available

**All proceeds from this event will be used toward
playground renovations at the school. We hope you'll
come and win some great prizes!**

SHREWSBURY AND CIVIL WAR BOUNTIES



Bounties? This term caught my eye while looking for something else in the Town Reports from the 1860's. What's that all about?

In April of 1861, President Abraham Lincoln telegraphed Vermont Governor Erastus Fairbanks, "Washington is in grave danger. What may we expect of Vermont?". The Governor replied that "Vermont will do its full duty" and immediately an initial 780 troops from Vermont were gathered "to maintain the honor, the integrity and existence of our National Union...".

That same day on which Governor Fairbanks replied to the President, the Vermont Legislature appropriated a full one million dollars to help the Northern cause. There was a unique clause in this legislation, which one author opines, "entitles this Legislature to lasting honor". Under the newly passed legislation, "in no case could the needy families of soldiers in the field be deemed or become paupers. If in want, they were to be...treated as beneficiaries of the State".

Two months later, in June, the Shrewsbury Town Clerk entered the following into the Town Records: "Resolved that the Town of Shrewsbury pay to each and every Volunteer that have enlisted from the Town of Shrewsbury or may enlist into the Service of the United States and actually

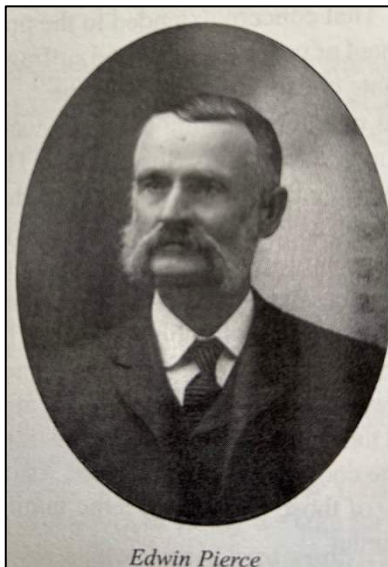
serve therein during the present war in regiments from the State the Sum of Fifty Dollars each as bonus money to be appropriated by the Select Men as they may need it".

Regarding support of families left without the support of their young men, the minutes of that same June Town Meeting continues: "Moved that someone be recommended to the governor to be appointed as agent to see to the families of the Volunteers from the Town of Shrewsbury that have gone into the Service of the United States. Voted that H. C. Gleason¹ be recommended to the Governor to fill that office".

The New York World newspaper, on April 28, 1861, wrote, "Vermont has a population of but about 300,000, mostly farmers, and yet has made an appropriation of \$1,000,000 to aid in maintaining the stars and stripes. Many have done nobly; but none, resources considered, have equaled this".

In Shrewsbury 45 men signed on for a 3-year obligation and 24 men signed on for nine months as reported in the 1863 Town Report. Bounties (bonuses) were paid by the Town to these individuals at \$10 upon signing and \$40 at the time of honorable discharge. In addition, the Legislature approved a payment of \$13 per month (later increased to \$20) to be made during the recruit's service.

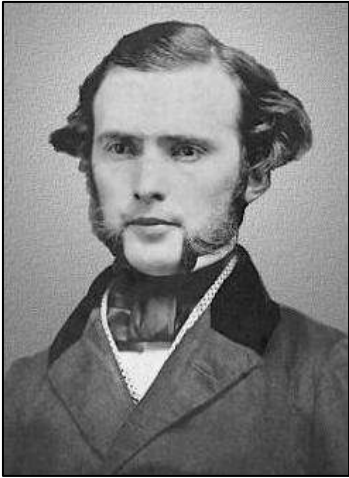
In October of 1863, the President called for an additional 300,000 men to serve in the army. Vermont's quota was 4,898 and each town was assigned a quota. Shrewsbury's quota was 14 men. A special Town Meeting was called and the Town voted to "increase the bounty to five hundred dollars", to be paid to 14 men who should enlist to save a draft". 13 men are listed in the 1864 Town Report as receiving this larger \$500 bounty, all signing for 3-year hitches.



Several enlistees from Shrewsbury were from the same family. Crapo (John, Benjamin, and Josiah), Pierce (Edwin, Eli and George), Headle (Daniel, Levi and Mortimer), Ripley (James and Thomas), Caswell (Edward and William), Round (Julius and Stephen), Bellany (Francis and Joseph) and Holden (Squire and Hollis).

Edwin Pierce² was among the men receiving a bounty in 1863, along with his brothers. At 21 years old, Private Pierce mustered into the VT 14th Infantry on August 27, 1862, and mustered out on July 30 of 1863. During his service, the

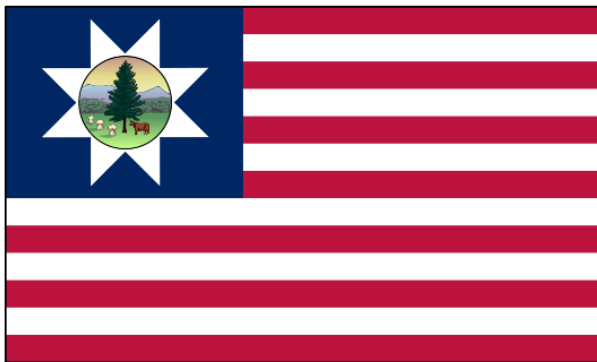
14th was assigned to defend Washington, DC. Later, after Pierce returned home, the 14th participated in the Battle of Gettysburg, honorably led by a young Rutland attorney and State representative, Colonel William Nichols, shown below. Many of the Shrewsbury men joined the 14th Infantry. Of the 960 "men" in the 14th, 332 were between the ages of 16 and 21.



The Vermont State flag, carried by all Vermont troops, is shown below, with the same cow and pine tree as the current State flag.

In 1864, the government issued a call for an additional 500,000 volunteers and increased bounty reimbursements were authorized by the government, depending on time of service. No additional

recruits are noted from Shrewsbury but that year 16 returning soldiers from Shrewsbury received bounties (plus interest during their service). Bounties were continued to be paid out through 1867 as soldiers completed their enlistments.



Most soldiers in the war entered by way of receiving a bounty. However, even if drafted, one could provide another person to take his place, or pay a \$300 commutation fee and stay home. 816 in the State paid a substitute. 1,917 paid a fee to avoid service. 10 men in

Shrewsbury paid the \$300 fee to avoid service and 5 men found substitutes to take their place.

After 1867 no bounties are reported as being paid in Shrewsbury. The war was ending. Dawn Hance's "Shrewsbury, VT – Our Town As It Was" reports that a total of 88 soldiers and 6 sailors from Shrewsbury were enlisted in this horrible war. Shrewsbury's population was 1,175 in 1860 (1,097 today). 16 men died while in service (17% of those which served), about the same mortality rate as statewide.

During the War, Vermont's population was just 300,000. 34,000 Vermonter's served, over 10% of the total population. More than \$10 million was expended on the war effort statewide. The State paid \$3.5 million for soldier's pay. Towns contributed over \$4 million through local taxes. The 1865 Town Report itemized the Town's costs as follows: "The poor \$644.96, Soldiers \$6,150, Roads and Bridges \$407, Damage sustained by accidents on Bridge \$32, Other expenses \$320.11". From this one can see the significant financial impact on the Town for the war effort as bounties were paid to returning men and up-front bounties were paid to new enlistees.

Vermont had the second highest per capita fatality rate of all the Northern states, more than 5,200 Vermonters died in the war. Nationally, it is estimated 750,000 died out of a total population of 31 million. In fact, as many Americans died in the short 4 years of the Civil War than the total deaths of all other US wars, from the Revolution to the present day, 265 years.

Mark Youngstrom

¹ Henry Gleason is a direct ancestor of the Smith Maple Crest Farm family and the individual who donated the organ in the Center Church to the Town

² Edwin Pierce was the father of Willie Pierce (Marjorie Pierce's father) who purchased "Pierce's Store" from Jasper Aldrich in 1918.

~Article by Mark Youngstrom

P.S. This is what happens when a single word like "bounties" catches one's eye while looking for something else in the Town archives.

TIMES OF SHREWSBURY

ONLINE in **COLOR**

<http://www.shrewsburyhistoricalsociety.com>

AND

www.shrewsburyvt.org

Shrewsbury Historical Society.

www.shrewsburyhistoricalsociety.com

Thank you

Thank you to all who voted yes to the Society's request for moneys to maintain the Shrewsbury Historical Society Museum building. We are grateful for your help. This spring we will prepare new exhibits after cleaning up the winter's dust.

The Shrewsbury Historical Society Museum will be open
July 7, 2024 (the first Sunday in July)
from 1:00pm to 3:00pm.

We will close for the season on October 27.

Dues are due for this year. Please join us to help preserve the past for our future!

50th Anniversary of Mountain School

As announced in the March issue, the Historical Society is asking for original submissions about happy memories, positive impressions, or hopes related to the Mountain School. Send:

essays,
poems,
photos,
drawings,
songs

Please send all work by May 15, 2024, as a PDF file to freddie.monder@gmail.com or mail a hard copy to Grace Brigham, 262 Shunpike Road., Cuttingsville, VT 05738.

Personal recollections

In the early to mid 1970s, while Al Ridlon, Sr. was building our dream house, we would drive up to see how it grew, and noticed we could hear the sound of children playing outside at lunch recess coming up from the schoolhouse (now the Town Library) in Cuttingsville on the then named School Street, now Town Hill Road.

In the mid 1980's, after settling in our new home, I worked part time at the post office as Barbara Perkin's assistant, in the "Old Brick" which was a general store in the 1800's. One morning as I was out front raising the American Flag, I noticed the children of families Whitmer, Patten and Smith were waiting at the school bus stop at the steps of the post office. They took out their musical instruments and had a "jam session". It was truly a Norman Rockwell moment and I did not have a camera to catch it. I also thought that we must have a wonderful school music program. I cherish this memory.

Our Town celebrated the anniversary of the charter calling for the area named Shrewsbury, and the Royal Governor of New Hampshire, Benning Wentworth granted 24,000 acres to 64 associates (seeking land for our town) on September 4, 1761. Historical Society members dressed in typical costumes visited Mountain School. And reenacted for the students this happening. Photos were taken as Richard Bettelli and Fran Patten dressed up as Wentworths and Catherine Carrara and Grace Brigham and others as future residents. I am sure many students just may still have their souvenir copies of that signed grant. The Museum has photos and the original costume for Wentworth made by Patten for this event.

Is it Shrewsbury or ShROWSbree?

According to our history book, *Shrewsbury, Vermont - Our Town As It Was* by Dawn D. Hance, the origin of Shrewsbury's name is unknown. However, since Wentworth had a wide circle of friends in England and many of his grants were named for them, it is possible that the town was named for the Duke of Shrewsbury.

One day as I staffed on a Sunday opening for visitors, a woman came in and looked at all things and then headed towards the door to go out and I asked if there were any questions and was she local, and she explained, no, that she was visiting in the area from England and that they pronounce the name different than we do. In England they say: Shrowsbree. For a while I corresponded with a resident of our sister town in England, rather a city. Lovely with lots of flowers and greenery of parks, etc.. I prepared an album of interest and it is there in our library section. ~Submitted by Ruth Winkler



THE NEW LEARNING PROJECT

CHOOSING TO EXPERIENCE OUR POTENTIAL

MUSIC LESSONS -- Guitar, Piano, and more
RED CROSS COURSES -- First Aid, CPR, Lifeguarding
SWIMMING INSTRUCTION
(More services at website)

STUDIO IN CUTTINGSVILLE VT
www.TheNewLearningProject.com
TheNewLearningProject@gmail.com
802.492.3208

Marcos Levy
Instructor with over 30 years
of Experience

Thrive Center

OF THE GREEN MOUNTAINS

Chiropractic Care
Applied Kinesiology
Therapeutic Massage/Bodywork
Holistic Health Education
Nutritional Supplements
Coaching • Worksite Wellness

Joseph P. Donohue, DC
Lisa Marie Donohue, MA, LMT
*Serving the Community with Excellence
and Compassion Since 2000*

68 South Main St, Wallingford, VT
802.446.2499 • [instagram.com/thrivecentervt](https://www.instagram.com/thrivecentervt)

Please save the date and join us in a community fundraiser to...

“Help Sierra Through Her Kidney Transplant!”

All proceeds to benefit Sierra & her family.

For more information:

<https://www.gofundme.com/f/help-sierra-through-her-kidney-transplant>

FAMILY CONTRA DANCE

featuring...

**The Shrewsbury Jug-or-not
Dance Band**

with caller – Licia Gambino

This is a family-friendly contra dance. All dances are taught, and no experience is necessary.
Everyone is welcome!

Sunday, APRIL 7th, 3:00 – 5:00pm

Shrewsbury Meeting House

(88 Lottery Road, Shrewsbury, VT)

~Suggested Donation: \$20 Family/\$10 Individual~

For more information about the dance:

Licia Gambino - (802) 492-3792 /hamgam@vermontel.net

The Shrewsbury Community Church



Compiled by Sue Ransom-Kelley

It is always a joy to start to celebrate the coming of Spring by swapping out the poinsettias and wreaths for Easter Lilies! As the beautiful white trumpet shapes begin to open it reminds us of green grass soon to come, buds that will soon be opening on the trees, and springing from the earth! What a joy it will be to celebrate sugar season with our community pancake breakfast!



Community Food Shelf

Free Community Food Shelf at the Library in the front entry way. Those in need are welcome to help themselves any time the Library entryway is open.

Limited hours are:

Mon 10am-12noon; Tues 7-9pm; Wed 10am-5pm and 7-9pm; Thurs 7-9pm; Fri 10am-12noon; and, Sat 10am-12noon.

We have our additional Summer Food Shelf on the side porch at Pierces Store in North Shrewsbury. Those in need are welcome to help themselves.

Food Delivery and Assistance If you are unable to get to the Food Shelf at the library in Shrewsbury, we will deliver groceries to you. If you need items which are not available on the shelf we can provide grocery gift cards. Call Karen at 802-558-5991 or Sue at 802-779-4825 or 802-492-3738.

Community Needs

- Wedding, Funeral or Memorial Service Requests: Contact Donna Smith 802-492-3367; or Sue Kelley 802-492-3738, 802-779-4825
- Community Helping Hand Requests: Contact Donna Smith 802-492-3367; Sue Kelley 802-779-4825, 802-492-3738; or Karen Lorentz 802-558-5991. Shrewsbury residents experiencing financial hardship. Assistance can be given for basic needs (food, heating, gasoline, etc). If you or a neighbor are in need, please let us know!
- Pastoral Care, Home, Hospital Visitation, Outreach Requests: Contact Roxanne Ramah 802-492-3675 or Ruth Kinne 802- 775-5318.

Sunday Fun Day: The kids recently celebrated St Patrick's Day! They made wonderful sugar cookies and decorated them in green and many other cheerful colors! They were delicious! We are a group for young people age 2 years and up. We meet at the Shrewsbury Community Church Sundays at 1030. We do activities, work with the Heifer Project, learn about our community and how to be good people. We plan and learn inside and out! Parents and community members work with us. Projects are nature based and many are made with recycled items. All are welcome and we would love your attendance!

PLEASE COME AND JOIN US ANY SUNDAY! Call with questions: Cortney 802-683-7852, Anissa 802-779-2248 or Lynette 802-683-0631

Shrewsbury Community CHurch Calendar

- Tuesday March 26, 12noon. Prayer Shawl Group. Upstairs at the Meeting House. All are welcome to join us! Call Roxanne 802-492-3675 802-770-3938 for information. Don't know how to knit or crochet? Come and we will teach you.
- Sunday March 31, 10:30am Easter Worship Service lead by Pastor Karen Braeutigam. and Fun Day Program for kids.
- Sunday April 7, 10:30am Worship Service and Holy Communion lead by Pastor Karen Braeutigam. Fun Day Program for kids.
- Sunday April 14, 10:30am Worship Service lead by Pastor John Hill. Fun Day Program for kids.
- Sunday April 21, 10:30am Worship Service lead by Pastor Karen Braeutigam. Fun Day Program for kids.
- Tuesday, April 23, 12noon. Prayer Shawl Group. Upstairs at the Meeting House. Call Roxanne for information 802- 492-3675 or 802-770-3938.
- Sunday, 10:30 April 28, 10:30am. Worship Service lead by Pastor Karen Braeutigam. Fun Day Program for kids.

Free Medical Equipment

Living In Place continues to provide, at no cost, medical assist equipment that has been donated by Shrewsbury residents who no longer need them. On hand right now are many wooden crutches, adjustable aluminum crutches, walkers, rollators, commodes, shower seats, bedpans, toilet safety bars, and a large wheelchair. If you need any of this equipment, call Jan O'Hara at 492-8687.

Shrewsbury Community Church Service Project

The community is invited to participate in our community service project! We will meet Sunday April 21 at 11:15 am upstairs at the Shrewsbury Meeting House. We will be assembling kits for Church World Service. The kits will be distributed in areas where disasters occur. We will need help putting together kits, or donating items for the kits. Money can also be donated to help us purchase items needed. Items needed:

School Kits:

- One pair of blunt scissors removed from the package (rounded tip, only)
- Three 70-count bound notebooks or notebooks totaling 200-210 pages (no loose-leaf or filler paper)
- One 30-centimeter / 12" ruler
- One hand-held pencil sharpener removed from the package
- One large eraser (no pencil cap erasers)
- Six new, unsharpened pencils with erasers (removed from packing and use a rubber band to hold the pencils together).
- One box of 24 crayons (only 24)
- One 12"x14" to 14"x17" finished size cotton or lightweight canvas bag with handles (solid color or kid-friendly fabric, no logos, reusable shopping bags or backpacks)

Hygiene Kit:

- One hand towel measuring approximately 15" x 28" to 16" x 32" (no fingertip, bath, dish towel or micro-fiber)
- One washcloth
- One wide-tooth comb removed from the package
 - Must be sturdy with at least 6 inches of teeth
 - No pocket combs or picks
 - Rattail and combs without handles are acceptable
- One fingernail or toenail clipper removed from the package (either one is acceptable)
- One bath-size bar of soap in the original package
- One toothbrush in the original package
- Ten standard size Band-Aids

Period Pack (Menstrual Hygiene Kit)

- One 1-gallon size re-sealable bag
- Two 2oz bottle hand sanitizer
- Three 4-gallon bathroom trash bags
- One travel pack of wet ones
- 5 regular Tampons
- 5 super absorbency Tampons
- 10 Pad (Unscented. Long super ultra-thin.)
- Bath-size soap (3 oz. bar or larger. No Ivory or Jergen's soap. Do not remove from packaging.)
- One pack of flushable wipes (Unscented. 42 count)
- 6 fragrant-free laundry sheets (placed in small, Ziploc bag.

Please come and help us with this project! Together we can make a difference! Questions call Sue 802-779-4825 or 802-492-3738.

Submitted by: Sue Ransom-Kelley

SING, SAY, DANCE, PLAY

Family Music Classes

offered by Licia Gambino

Six-week Spring Session

Tuesdays: April 23rd - May 28th

10:00am - 10:45am

Babies - Preschoolers (birth - 5 years) with a parent or caregiver. This class will be aimed at the needs of younger children. Older siblings are invited to assist and join in.

Tuesdays: April 23rd - May 28th

4:00pm - 4:45pm

Multigenerational - This class will offer music & dancing for all family members to learn and enjoy together.

Wednesdays: April 24th - May 29th

4:00pm - 4:45pm

Multigenerational - This class will offer music & dancing for all family members to learn and enjoy together.

Fee: \$25 - \$100 (sliding scale) per family for the six-week session

Location: Licia's home studio, 63 Copperas Hill Rd., Shrewsbury, VT.

For more information or to register, please contact Licia Gambino:
Phone: (802) 492-3792 or Email: hamgam@vermontel.net

Small Farm Flavor & Quality!



Vermont Maple
Syrup

Maple Cream

Maple Candies

Pancake Mix

Marinades & Spices

Locally Sourced

Pork

Chicken

Eggs

Grassfed-Finished
Beef

Ground Beef

Steaks & Roasts

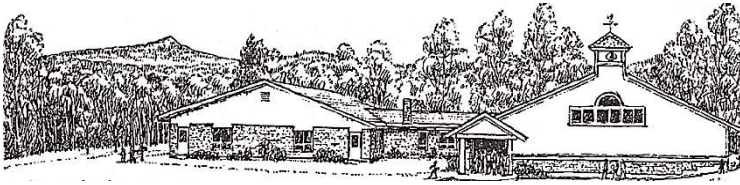
All kinds of Ribs

Briskets & Sausages

OPEN: WED THRU MON 10 AM - 5 PM

From: Rutland: Left off VT RT 103 just 2.5 miles - on the right
From: Cuttingsville: Just 2.1 miles up Town Hill Rd,
right on Lincoln Hill Red Barn on right

2450 Lincoln Hill Road, Shrewsbury VT. 05738
SmithMapleCrestFarm.com 802-492-2151 maplecrest.info@gmail.com
We ship syrup all over the USA



SHREWSBURY MOUNTAIN SCHOOL

Important Dates:

3/18: Girls on the Run program started

3/20: Grade 3 and 4 visited Hildene on a Field Trip

3/20: Grade 6 students went to the Green Mountain Rock Climbing Gym for team building activities with the rest of the grade 6 students from the district

3/25: Grade 6 students from SMS and Mt. Holly will have a panel discussion with the MRU Principal Kaelyne Thompson and guidance counselors and MRU student representatives.

4/25: Velocity Program begins on Thursdays
Updates and information:

1. Girls on the Run has BEGUN!!! Thank you to our coaches, Lindsey Coutermarsh, Colleen Levins and Sabrina McDonough! We have 13 students signed up for this amazing experience this school year!
2. Velocity for 3-6th grade boys will start April 25 **on THURSDAYS** 3-4:30pm. Our own Mr. Dave will be our head coach and this new program is focused on building relationships and developing character while having activities together as a team.
3. Our Music In Our Schools Event was a HUGE SUCCESS! The SMS Band and Chorus students performed with all of our district elementary student musicians and the 7th grade student musicians from MRU. There were two identical concerts put on for the education and development of our K-6th grade students in the whole district. Parents and community members also joined in the fun to create a supportive audience for our student musicians. It was a beautiful celebration of music education in our school district. We also thank our own music educators, Jon Stratton and Jenn DeKalb, for all their hard work and dedication to our students!
4. Our 6th grade students are having a wonderful time building relationships with other 6th graders from our school district in a specially designed transition program. The activities will be continuing through the spring and wrapping up with a visit to MRU!

Please contact me if you have any questions or concerns at 802-786-3995 or at kcimonetti@millriverschools.org.

~Kristin Cimonetti, Principal

SHREWSBURY HISTORICAL SOCIETY
INVITES YOU TO CONTRIBUTE TO

SHREWSBURY MOUNTAIN SCHOOL 50th ANNIVERSARY CELEBRATION ANTHOLOGY!

Submit an original
essay, story, or poem (max. 200 words)
photo,
drawing,
song

... about happy memories, positive impressions, or hopes related to the Mountain School.

1. A graphic design will be chosen as the cover of the anthology. Celebrate the school we love!
2. The top three works created by current SMS students will be read at a storytelling event in the fall (date to be determined) & published in the July issue of the Times of Shrewsbury.

PRIZES AWARDED.

Deadline for submission is MAY 15, 2024!

Send all work as pdf file to:

freddie.monder@gmail.com

or mail a hard copy to:

Grace Brigham, 262 Shunpike Rd, Cuttingsville, VT 05738

Anthologies to be sold as a

Fundraiser for Historical Society roof repair.

Information on purchase of anthologies will be published in the September Times of Shrewsbury.





EXPLORE. DISCOVER. THRIVE.
Mill River
Unified Union School District

PRESCHOOL AND PRE-K REGISTRATION FOR 2024 - 2025 SCHOOL YEAR

What is it?

A chance for you and your child to visit our pre-k program and begin registration.

Who is this for?

Any family that resides in the Mill River School District towns of Clarendon, Shrewsbury, Tinmouth, and Wallingford with a child 3 - 4 years of age.

Preschool child must turn three years old on or before August 31, 2024

Pre-K child must turn four years old on or before August 31, 2024

Enrollment is available on a limited basis

When?

(By appointment only)

Clarendon Elementary

May 24th, 2024

Shrewsbury Mountain

May 20th, 2024

Tinmouth Elementary

May 28th, 2024

Wallingford Elementary

May 17th, 2024

Contact?

Please call Sarah Bolster, Pre-K Coordinator at (802)786-3998 x218 for more information and to schedule an appointment.

<http://mruusd.org>



Spring Lake Ranch
therapeutic community

Preserving Shrewsbury's History through Our ACE Program

Spring Lake Ranch hosts adults who experience mental health challenges. As part of our Therapeutic Work Program, we help residents find purpose and community through involvement on crews around the Ranch. Over time, residents see their work blossom into tangible rewards, sometimes literally. For instance, Gardens Crew members might plant and tend a patch of rhubarb, then share a pitcher of rhubarb lemonade with their community over lunch.

Those who stay at the Ranch long-term can also participate in Advanced Crew Experience (ACE), which allows them to work closely with staff to design and complete a special project. Through ACE, they learn new skills, take on added responsibility, and create something beneficial for themselves, the Ranch, and our neighbors.

For the past year, one resident has worked on a project that she's titled, "Spring Lake Ranch: Through the Years." Together with staff and Shrewsbury residents, she researched and documented the 93-year history of the Ranch, which also plays a role in the history of Shrewsbury. For an upcoming newsletter, she recounts her involvement with the town.

"The story begins with my volunteer work at the local Shrewsbury Library. Harold Niblack, an employee at Spring Lake Ranch, has the role of a Ranch Driver and Recovery Coach. He is a passionate Cuttingsville community member. Harold introduced me to the Shrewsbury Library, where I met Joan Aleshire. She told me that she and Spring Lake Ranchers founded the Shrewsbury Library. Ranch residents and staff worked together to label and process books."

In another section, she writes,

"...I went to the Shrewsbury Historical Society Museum. We talked with the people there and discussed the Ranch connection with Shrewsbury. Did you know that there used to be families who lived on the premises, and the Ranch essentially became a place for children and adults to explore?"

The resident documented what she learned as a sort of "time capsule." She collected writings, digitized photos, and created collages to be enjoyed for many years to come. It's evident she's proud of her accomplishment and understands the value of her efforts.

"When I complete my portion of the ACE Project, I will leave behind my involvement with the Ranch as part of my legacy. Going forward, the next set of residents and staff can further enrich the documented history and attributes that make the Ranch what it is."

If town members are interested in learning more about the Ranch's history, please give us a call. We'd be happy to share what we've learned through our resident's ACE project.

~Article by Rose McCracken

Find us at: The Olde Barnayrd

5444 VT Route 103, Cuttingsville VT 05738



- Local & Handmade Goods
- Maple Syrup
- Craft Food & Beer
- Home Decor

Hours: 11am-6pm

Contact Us: (516) 522-4174 - hello@wallyscorner.com

Shop Online: www.wallyscorner.com

Shop Small, Buy Local





Shrewsbury Conservation Commission

Trail Camera Picture of the month



Raccoon Tracking Tips

Look for raccoon tracks near water. They also have a fondness for rummaging around our homes and campsites, thus earning the nicknames of Trash Pandas and Masked Bandits. The front and

hind paws have five long toes. The toes touch the curved middle pad with no gap. The front paw is smaller than the hind. The bottoms of the raccoon's front paws are very sensitive. Often when a raccoon is observed "washing" its food, it is actually using its sensitive paws to feel along underwater for tasty tidbits.

A unique gait of the raccoon is the pace walk. The front and hind paw on the same side of the body move forward almost simultaneously. The result is a pattern of



Raccoon using its sensitive forepaws to probe the bottom of a vernal pool.

paired tracks where the front and hind track from opposite sides register next to each other. Look for a pair of different sized tracks and a Z pattern that results from this movement.

Some information taken from "The Tracker's Field Guide" - Mark Lowery

Do you have a wildlife picture or track to share?

Linda Shelvey - Lpurdyshe@gmail.com



A picture of the larger hind track paired with smaller front. Note how the 5 long toes touch the curved foot pad with no gap.



"Z" pattern unique to raccoon movement.



SNO-BIRD NEWS

Well, the season is just about over for this year. Some of our trails are still open as they have access off the Old Plymouth Road. I went up on March 17 to see if sleds could ride out of there and to my surprise, they still can so we are leaving the higher elevation trails open. There were fresh sled tracks there, so some one is still trying to ride. We did close the trails for a few days for lack of snow but with the last storm we opened them back up. I do not ever remember closing the trails that early!

At the groomer shed parking lot they received about 13+ inches but up around the Stone House there were estimates around 25 to 30 inches. That gave riders a great boost to ride a little more. Some other clubs did not open their trails back up but we were hearing that VAST members still wanted to ride and there was snow in some of our area so we opened the gates and let people ride, and as the snow melted, we started closing the gates again.

We did have some one get on 407 off the Falls Road in Mendon and started tearing up the trail; that is why we have to gate the trails. We were lucky that we were grooming some of Mount Holly's trails that allowed us to groom 864.9 miles between the two club's miles. That is 55% of our total grooming contract for the year. We groomed the most miles in Rutland County.

We were hoping that we were going to groom to the end of the season but Mother Nature said differently. We had to cancel a two club cook out with the



Mount Holly Snow Flyers due to lack of snow also this year. Shortly it will be time to take down the signs close the last gates and put the Tucker to bed for the summer. While the trails are soft, please stay off those areas to protect them. Here is a photo of some happy riders on the trails in February. I take these when I am grooming, and riders are always happy to see the groomer out on the trails! ~Article by Roy Arthur

~~~~~



While Vermont Fish and Wildlife generally recommends people only put bird feeders out from December 1 through March 31, variable winter weather can sometimes dictate that birdfeeders should be removed even during this period. A good rule of thumb is that if it's generally "wintery" out for an extended period of time, with consistent snow on the ground and temperatures at or below freezing, you can keep your birdfeeder out.





## IT'S THAT TIME OF YEAR AGAIN

***We're Looking for Anyone who wants to  
Come Join the Fun!***

### ***Become a Volunteer for Rainbow Riding Center's Therapeutic Horsemanship Program***



**No experience  
necessary, just the  
desire to help  
children and adults  
overcome  
challenges and  
have FUN with  
Horses!**

***(non-horse-related opportunities available too!)***

***We will be holding a  
Volunteer Orientation***

***Saturday, May 11<sup>th</sup> at 10:00 a.m.  
Stone Wall Farm, 892 Tarbellville Rd in  
Belmont***

Please come see if this is your cup of tea. Visit our website at [rainbowridingcenter.org](http://rainbowridingcenter.org) or see us on Facebook and Instagram.

For additional information please email  
[janetupton@rainbowridingcenter.org](mailto:janetupton@rainbowridingcenter.org)



### **Looking for a New Experience? Something Different This Summer?**

You can help us bring joy to kids and adults and have fun doing it! Rainbow Riding Center is gearing up for this year's season and we need volunteers to help us bring the generosity of horses and their ability to help children and adults relax and learn to as many individuals as we can.

If you are looking for a new experience, Rainbow might just be the place for you. Please visit us on Saturday, May 11, at 10 a.m. when we hold our Annual Volunteer Orientation at Stone Wall Farm, 892 Tarbellville Road in Belmont. Everyone is welcome to attend and learn about our program.

You don't need to know anything about horses. We will introduce you. As long as you can walk alongside a rider in case they need a steady hand and are willing to learn, you'll fit right in. You must be 14 years of age to work with the horses. Students and others can participate and get credit for community service requirements. There are also many non-equine activities that you can participate in too.

Come see what we're all about, what you might do as a volunteer, and join us if you'd like to have a good time in the company of beautiful horses, a dedicated staff of instructors; and children and adults that know just how cool this program really is! For more info about opportunities to volunteer or if you are interested but cannot attend, please contact [janetupton@rainbowridingcenter.org](mailto:janetupton@rainbowridingcenter.org).

*~Submitted by Janet Upton*

~~~~~



Pussy Willows



Ralmps



Fiddlehead Ferns

Three Spring plants to look for sure signs of SPRING!

Red Cross Blood Drawing in honor of Gary Salmon

Tuesday April 2, 2024 from 12noon to 5pm at Grace Congregational Church, 8 Court Street in Rutland. Contact Grace Church 802-775-4301 for information.

Must call Red Cross for an appointment time:
1-800-RED-CROSS, 1-800-733-2767

No walk ins accepted.

Note: Gary gave 22^{1/3} gallons of blood in his lifetime.



We had a ball with Ms. Bonafine's K-1 students this past month as we explored carrots for our harvest of the month cooking class. We began with a taste test of raw orange, yellow, and purple carrots. Some had been harvested and stored in the fall and some that had been harvested that very morning! The students shared their descriptions of each sample. Then they tried air-fried carrot chips. After that we prepared two different dishes, cooked maple and dill carrots and a fresh carrot and apple slaw. Before we finished, the students voted on their favorite carrot preparation. All types found appeal with a different group of students, and while there were no clear winners, many carrots were consumed and enjoyed!



*Shrewsbury Mountain School K-1
harvest of the month students enjoying carrots.*



We have two great community workshops coming to the Russellville Schoolhouse in April.

On Saturday April 6, from 1:00-3:00pm we are hosting Scott Bolotin of Morning Star Perennials Nursery in Rockingham, VT. Scott will lead a workshop on grafting apple trees. Participants will learn the technique and have a chance to graft 2-3 of their own apple trees to bring home with them. Scott brings his wealth of knowledge and over 30 years of grafting experience!

There is a \$25 suggested donation for this workshop. Participants should bring a sharp knife, small towel and plastic bag. This workshop is space limited so pre-registration is preferred, to pre-register please contact Scott Courcelle at alchemygardens@gmail.com.

On Saturday April 20, Scott Courcelle will be leading a workshop called Nutrient Dense Growing Techniques 101/ Weed, Pest and Disease Management. The program will be at the Russellville Schoolhouse from 1:00-2:30pm. We'll talk about some exciting techniques that you can incorporate to take your gardening skills to the next level. Donations are welcome. If you have any questions, please contact Scott Courcelle at alchemygardens@gmail.com.

Finally, we hope to see you at the Schoolhouse for our music and art groups. We will have music on April 13 and our art group meeting on March 19th. Both at 7pm. Feel free to bring an instrument to music and some examples of art projects you're working on to the art group. Our intention is to help folks find more community and more creativity and inspiration.

SAGE Calendar

- April 6, 1:00-3:00pm: Apple Tree Grafting Workshop at the Russellville Schoolhouse (\$25 suggested donation)
- April 13 at 7pm: Music Jam at the Russellville Schoolhouse
- April 19 at 7pm Art Group at the Russellville Schoolhouse
- April 20 1-2:30pm: Nutrient Dense Growing Techniques 101/ Weed, Pest and Disease Management- at the Russellville Schoolhouse.

SAGE, Shrewsbury Agricultural Education & Arts Foundation, has a mission to support and promote sustainable farming and other arts that nourish community life. For more information about SAGE: contact Stephen Abatiell at educate.sage@gmail.com, Joan Aleshire at 492-3550 or visit www.sagevt.wordpress.com.

Follow us on Facebook for up-to-date event details at ShrewsburySAGE and find our sustainability and arts videos at www.youtube.com/@sagefoundation.

Shrewsbury Agricultural Education and Arts Foundation
educate.sage@gmail.com

~Submitted by Stephen Abatiell

Small Farm Flavor & Quality !

VT Maple Syrup & Maple Treats

Cook once and eat twice - check out

- beef roasts	- pork sausages
- short ribs	- pork chops
- ground beef	- ground pork
- ribeyes	- chicken breasts
- local eggs	

Thank you for shopping local at our small farm !!

2450 Lincoln Hill
Shrewsbury VT

SmithMapleCrestFarm.com
802-492-2151



92 Spruce Lane, Mount Holly, VT

SOLD

\$1,525,000



Gail Beardmore
Gail.Beardmore@EVrealestate.com



Mendi Michael
Mendi.Michael@EVrealestate.com



126 Main Street, Ludlow, VT 05149 +1 802-975-0338
okemo.evrealestate.com

©2024 Engel & Völkers. All rights reserved. Each brokerage independently owned and operated. Engel & Völkers and its independent License Partners are Equal Opportunity Employers and fully support the principles of the Fair Housing Act.

Farmacy Project's Summer of Free Produce

The referral period has opened for the 2024 Farmacy Project and Community Health is again partnering with the Vermont Farmers Food Center on this incredible program. The Farmacy Project provides 10-12 pounds of fresh locally grown produce for 15 weeks free to at risk individuals. Healthcare providers at Community Health provide referrals to the Farmacy Project, incorporating the "Food as Medicine" theme for those with health issues impacted by diet. Individuals and families can pick up their weekly share at convenient locations including Community Health offices. They also receive recipes and have access to nutrition education and cooking classes at VFFC in Rutland.

Contact your Community Health primary care provider or care manager for more information about the Farmacy Project. Call the Patient Access Center at 802-779-9169 or read more about the Farmacy Project on VFFC's website at https://www.vermontfarmersfoodcenter.org/farmacy_project

Shrewsbury Musicians in Philharmonic Concerts



The Champlain Philharmonic will be presenting its Spring Concert Series, "In the Key of Spring" at the Congregational Church of Middlebury on Saturday, April 6 at 7:30pm and at Grace Congregational Church in Rutland on Sunday, April 7, at 4pm. This community orchestra has several loyal Shrewsbury fans and this season includes three townspeople: Kristi Bragg, Megan LaChance, and Roxanne Ramah.

The program will feature a true gem; Symphony No. 3 in C minor, Op. 78, by Camille Saint-Saëns, better known as the "Organ Symphony" because it features pipe organ which will be played by Alastair Stout, Director of Music Ministries at Grace Congregational Church in Rutland. The program will also include a piece by PDQ Bach and an original composition by UVM professor David Feurzeig, "Stride Rite", based on Stravinsky's The Rite of Spring, but with a ragtime twist.

For more info, visit www.champlainphilharmonic.org.
~Submitted by Roxanne Ramah

"A Song for Gary" written in honor of Gary Salmon

"A Song for Gary" by Alastair Stout will be song at Grace Congregational Church on April 21 by the Grace Church Choir and Handbell Choir. Church service begins at 9:50am with organ prelude. All are welcome.

Pie For Breakfast Event

The Middletown Springs Public Library is hosting our 15th annual Pie for Breakfast. On Saturday, April 6, 2024, from 8-11am, library volunteers and trustees will be serving up all-you-can-eat PIE for breakfast with tea, coffee, or juice. The slices are cut thin so it is easy to try many different varieties. Pies are both sweet (such as pumpkin, apple, berry, chocolate) and savory (such as quiche, pot pies, pizza).

This event is held at the Middletown Springs Elementary School. Come enjoy scrumptious pies, hot coffee, and good cheer, \$10 for adults; \$5 for children 5-12; under 5 are FREE. All proceeds benefit the Middletown Springs Public Library.



Barred Owl in the Tree
Photo by Marilyn Dalick

BRANCH BROOK EXCAVATING LLC

Driveways / Harley Raking / Ditches and Drains /
Land Clearing and Reclaiming / Stump Removal /
Retaining Walls; New and Old / Ponds / Power, Gas,
and Water Line Burial / General Dirt Work



Benjamin Turco

1269 Branch Brook rd

Mount Holly, VT 05758

Phone: (802)770-8964

branchbrookexcavating@gmail.com

Mount Holly, VT



Joshua Bickford

802.855.3216

joshfbickford@gmail.com

DB
TREE WORKS

Fully Insured • Tree Removal • Pruning



PIERCE'S STORE

802-492-3326

www.piercesstore.com

Hours: 8am to 6pm

Rob Jaimes, Manager

Happy Mud Season/Spring Everyone!

This month we have some exciting things happening at the store.

First off, I would like to announce that our search for an Assistant Manager is finally over! Martha Sirjane has accepted the position and will be starting in April. Martha brings her years of experience, knowledge of the community, and artistic flair to the position and we are all very excited to have her onboard.

We have increased our **breakfast and lunch take-away food** offerings and have started carrying more fresh fruits. As the local produce scene takes off this year, expect to see a larger variety of items and a few surprises. We also plan on offering **starter plants** this year for the gardeners in the community. More details to come.

Our **Bacon Egg and Cheese Croissants** have proven themselves to be very popular. Starting in April we will also be offering **Egg and Cheese Biscuits** with Bacon or Sausage. A warm, flaky Buttermilk biscuit with scrambled eggs, Cabot Cheddar, Bacon or Sausage made with ground pork from Smith Maple Crest. Early tests on this new sandwich have been promising and delicious.

A few of our vendors have closed this year. I am actively looking for new vendors to bring us the products we love and miss, as well as new and different items at affordable prices. If there is an item you regularly purchased that you have not seen in stock for a while, please mention it next time you are in the store.

We are ending March with an **Easter Egg Hunt** on the 30th. Over 100 eggs will be hidden with candy and prizes inside. The Hunt starts at 10am, rain or shine. Bring the kids for a morning of fun and free hot chocolate.

For the adults, we have a **Wine Tasting** April 26 from 4-6pm. Sandy never disappoints with his selection and taste. Enjoy some free snacks at the tasting and possibly find your next favorite bottle.

Pierce's is here to serve you, Shrewsbury. If there is anything I can do to make your Pierce's experience more enjoyable, please do not hesitate to speak up. Feedback can be emailed to pierces.store@gmail.com

Thank you and have a great April!

~Rob Jaimes, General Manager, Pierce's Store

Wine Tasting



Join us at Pierce's Store on Friday, April 26, from 4pm to 6pm to sample tasty and affordable wines from Portugal, the most under-rated wine producer in western Europe. To celebrate spring, we'll feature rosé, white and red wines. Long the poor man of Europe, Portugal has mastered the art of making good wine at a reasonable cost. Prices for our featured wines will range from under \$10 to under \$20. Hope to see you there! ~Sandy Bragg



EASTER EGG HUNT

~~~For Children Ages 1 to 100~~~

**Saturday, March 30<sup>th</sup> @ 10am**

**at Pierce's Store**

Meet in the garage driveway

**101 eggs**

**50 eggs with prizes inside**

**50 dyed hard-boiled eggs**

**One "golden" egg**

Enjoy complimentary hot chocolate

Please pre-register at [pierces.com](http://pierces.com)

## Shrewsbury Singers

### \*Winter – Spring Session\*

Rehearsals: March 3 - May 19

Concert: May 19, 2024

### Rehearsal Schedule

(Please feel free to attend either or both rehearsals.)

**Sunday Mornings, 9:00AM – 10:20AM**

&/OR

**Wednesday Evenings, 6:30PM – 8:00PM**

### Where?

Shrewsbury Meeting House

(Sundays - Upstairs Sanctuary/Wednesdays - Main Hall)

88 Lottery Rd., Shrewsbury, VT 05738

### What Songs?

Songs sung in harmony from across the globe and spanning centuries.

### Who?

Teens – Adults who love to sing!

All levels of experience are welcome.

FOR MORE INFORMATION:

Licia Gambino (802) 492-3792/[hamgam@vermontel.net](mailto:hamgam@vermontel.net)

The Times of Shrewsbury  
PO Box 373  
Cuttingsville, VT 05738

PRESORT STD  
US POSTAGE PAID  
SHREWSBURY, VT  
05738  
PERMIT NO. 2

To: Postal Patron

Donors are recognized for the remainder of the calendar year in which their donation is received. The *Times* is mailed to all residents of Shrewsbury and is also available online. The cost of printing and mailing is made possible through advertising and donations and are very much appreciated, but are not tax deductible. Donations can be made to: *Times of Shrewsbury*, P.O. Box 373, Cuttingsville, VT 05738. **THANK YOU!**

Marti Andersen  
Gary & Minnie Arthur  
Roy Arthur  
Nate & Angela Bailey  
Steve Banik & Virginia Gundersen  
Michael and Elizabeth Bedesem  
Nanct Bell  
Rich & Cynthia Biziak  
Laura Black  
Karen Braeutigam  
Kristi & Sandy Bragg  
Mike & Laura Cashel  
Christina Clarke  
Marilyn Dalick  
Sally Deinzer  
DiPrinzio Family  
Stan & Weezie Duda  
Lizzie & Wayne Emmons  
Nils & Pamela Ericksen  
Kathi & Tim Faulkner  
Gene & Kathy Felder  
Todd Frederick & Michelle Greene  
Lily & Eldred French  
Laurel & David Fretz  
Scott Garren & Heather Shay  
Jonathan Gibson & Eliza Mabry  
Richard Gile & Sue Brown  
Mark & Carol Goodwin  
Pam & Peter Grace

Greenhagen Family  
Barry & Barbara Griffith  
John Guidry & Tamako Okamura  
John & Betty Heitzke  
Betsy Hinckley  
Carmine Iannace & Rita Gyls  
Martha Herbert Izz  
Diane & Jeff Jakobsen  
Jack & Betsy Jesser  
Ellen Jorgensen  
Michael & Angie Lauri  
Ed & Clare Mangine  
Gerry & Chryl Martin  
Stephen & Patricia Martyn  
Taffy Maynard & Family  
Lynn McDermott  
Linda McGuire  
Jeff & Pam Monder  
Moody Family  
David & Georgia Mosher  
Jack & Joan Mulqueen  
Fran Patten  
George and Doris Perry  
Jack & Sharon Perry  
Ken & Coral Petretti  
Susan & Robert Quinn  
Rainbow Riding  
Helen & Andy Richards-Peelle  
Ridlon Family

Lillian & Richard Rohe  
Thomas & Donna Ryan  
Ed & Judy Ryan  
Susan Savage  
Brian & Patricia Sedaille  
Kevin & Mary Alice Self  
Gary & Katherine Shattuck  
Alan & Linda Shelvey  
**Shrewsbury**  
Community Church  
Library  
Mountain School PTO  
Volunteer Fire Department  
Sirjane Family  
Paul & Sarah Titterton  
Jess & Ariane Torres  
Anne Vanneman  
Lana Vanucchi  
Reesa Watson  
Howard & Deborah Weaver  
Michael & Phyllis Wells  
Nancy West  
Christel Wiedmann  
Ali & Rick Wilson  
Lee Wilson  
William & Peggy Wilson  
Winkler Family  
Mark & Connie Youngstrom

