



# Times of Shrewsbury

June 2025



## USING DRONES TO TRACK CLIMATE CHANGE IMPACTS AT JOCKEY HILL FARM IN SHREWSBURY

At Jockey Hill Farm, I've been using drones for the past six years to monitor how climate change is reshaping our land. From forests and meadows to streams and remote areas of our property, drone photos have revealed changes that can often be hard to see from the ground—toppled trees, impacts of invasive plants and insects, washed-out streambeds and other major erosion from sudden rainstorms across our property. These aerial images do more than document damage—they help us see trouble early, make smarter land management decisions, and protect our natural resources.

One of the biggest changes we've seen is streambank erosion. At Gould Brook on our farm, both sides of the stream have receded by more than 25 feet in places. This is due to more frequent rain bursts that cause flash flooding overwhelming streams banks especially where the stream curves sharply. The results are serious: valuable topsoil is being washed away, weakening the fertility of our fields and harming the stream's ecosystem. Even a newly installed over-sized culvert last spring couldn't hold up—one brief rain burst washed out the fill around it and carried it 30 feet into a field. That incident led us to partner with the Vermont Department of Environmental Conservation – Stream Division to replace the culvert with a "skidder" bridge, often used by loggers to cross streams during logging operations.

Drones help me gain access to areas we can't easily reach on foot. For instance, we discovered a 60-foot embankment eroding in the upper woods—something only visible from

above. The erosion had already toppled about 20 mature trees into the stream. Gradually this erosion will continue to erode the hillside and will ultimately take out an access road beside it. While fallen trees can improve trout habitat among other benefits, the rapid pace of change is alarming. Drones have also shown wind damage in remote forest sections, with more trees falling each year due to stronger windstorms.

By comparing drone images from year to year, we can see how quickly things are changing. Long-stable streams now shift course at a pace we haven't seen before. Solid hillsides are being eroded by ever deeper gullies. These shifts aren't random—they reflect in part the accelerating impact of climate change across Vermont and New England. Time-lapse drone photography creates a visual story of change, showing us not just what's happening, but how fast. That kind of insight is valuable for making smart choices about conservation and land use.

Yes, drones raise some privacy concerns, but when used responsibly by certified operators, they can be a powerful tool for land stewardship. For any landowner trying to keep pace with a changing climate, drone photography offers a practical way to monitor, understand, and respond to what's happening on the ground. What I've done at Jockey Hill Farm may be useful model for other landowners: use drones to stay informed, protect your land, and adapt to the new realities of our environment.

~Article by Tim Stout



*This section of Gould Brook has widened by over 40 feet in the last four years.*



*Stream erosion on Gould Brook. The course and width of this stream have changed dramatically since 2020.*

## Shrewsbury Outing Club 2025 Membership Information

### Vermont State Senators:

Brian Collamore:

[bcollamore@leg.state.vt.us](mailto:bcollamore@leg.state.vt.us)

Terry Williams: [twilliams@leg.state.vt.us](mailto:twilliams@leg.state.vt.us)

David Weeks: [dweeks@leg.state.vt.us](mailto:dweeks@leg.state.vt.us)

### Vermont State House of Representative:

[Kcwinter5783@gmail.com](mailto:Kcwinter5783@gmail.com) or 802-245-4190

*The Vermont General Assembly is in session January thru June. To view committee member-ships, bills that have been introduced, track each bill's progress, and review committee agendas go to [www.leg.state.vt.us](http://www.leg.state.vt.us). During the week you can contact your legislator by leaving a message at the State House by calling 1-800-322-5616 or 828-2228 (the Sergeant-At-Arms' Office).*

### United States Senators:

**Senator Peter Welch**

[www.welch.senate.gov](http://www.welch.senate.gov)

Vermont Office: (800) 642-3193

Washington D.C. Office: (202) 224-4242

**Senator Bernie Sanders**

[www.sanders.senate.gov/contact](http://www.sanders.senate.gov/contact)

Vermont Office: (800) 339-9834

Washington D. C. Office: (202) 224-5141

### United States House of Representative:

Representative Becca Balint

Vermont Office: 347-461-4982

Washington D. C. Office: (202) 225-4115

*Revised 2/1/25*

**\*\*Note:** for a more in-depth article containing a brief history of the SOC and pertinent information regarding membership, please check out the May 2025 edition of the Times of Shrewsbury!

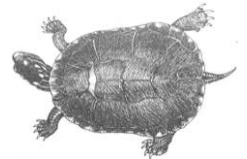
**How to join:** An SOC Family Membership is available to Shrewsbury residents or landowners who have completed the 2025 Membership Form, signed the Waiver, and paid the Annual Fee. A "Shrewsbury Family" is defined as a family or individual residing or owning property in the town of Shrewsbury. Family members and friends living at an address outside of Shrewsbury (who do not own property in Shrewsbury) are considered guests and must be accompanied by a SOC member to use the SOC waterfront area. A membership lasts from June 1 to May 31 of the following year.

If you wish to join as a new member for the upcoming season, please contact us at [ShrewsburyOutingClub@gmail.com](mailto:ShrewsburyOutingClub@gmail.com) for the forms. 2025 Membership Forms and Waivers will also be available at the Shrewsbury Town Office.

Once all paperwork and payment has been received, your name will be added to the membership list posted at the Lake and given to the security guard. After June 1, the membership list will be updated at the end of each week. You may be asked to leave if your name is not on the list.

To become a 2025 SOC member, please complete the **2025 Membership Form**, sign the **Waiver**, and submit these forms along with the **2025 Membership Fee of \$55** (payable to the **Shrewsbury Outing Club**) to:

**Shrewsbury Outing Club**  
**c/o Chris Clarke, Treasurer**  
**4431 VT Route 103**  
**Shrewsbury, VT 05738**



Thank you and have a happy summer 2025!  
Shrewsbury Outing Club

## TIMES OF SHREWSBURY

The Times of Shrewsbury is published monthly from February through December, and compiled by volunteers from material submitted by residents with the goal of informing townspeople of what is happening in Shrewsbury. The views and opinions expressed in articles are solely those of the author and not necessarily those of the editors.

All submissions must be accompanied by the name of the submitting person and are printed at the editors' discretion subject to editing for length and clarity. Letters to the Editor exceeding 350 words will be subject to editing for length. Any information piece or informational political letters (without specific party or vote appeal) will be subject to the guidelines previously described.

A writer of a letter that directly names a Shrewsbury resident or organization in a critical manner must get copies to the resident or organization, and to the Times by the 10th of the month prior to publication or it will not run. If the named person or organization indicates in writing to the writer and to the Times that they choose not to respond, the letter will run. If the named entity responds, the response and initial letter will run in the same issue.

There is no charge for: jokes, poems, nature reports, family event announcements, feature articles, or letters that are not commercial. Also, there is no charge for appropriate notices of free items.

Articles and Advertisements: Deadline for submission is 5pm on the 20<sup>th</sup> of the month prior to publication; exceptions will be announced in the prior month's Times.

Ads in the Times are for area businesses, local non-profit events, and local ballot election advertisements.

Best Formats: Articles: Word or as an email message with no formatting. Photos: jpeg. Ads: jpeg or Word document.

Monthly advertising fees and relative sizes:

Full page	\$110	(7.5"w x 9.5"h)
Half page	\$60	(7.5"w x 4.5"h or 3.5"w x 9.5"h)
Quarter page	\$15	(7.5"w x 2.5" h; or, 3.5"wx 4.5"h)
Business card	\$10	(3.5"w x 2"h)
Classified ad	\$5	(15 words or less)

Payment due by the 20<sup>th</sup> of the month prior to publication.

1/18/25

Chryl Martin ~ Rich Biziak  
Times of Shrewsbury, P. O. Box 373, Cuttingsville, VT 05738

Email: [shrewsburytimes@gmail.com](mailto:shrewsburytimes@gmail.com) Online: [www.shrewsburyvt.org](http://www.shrewsburyvt.org) and <http://www.shrewsburyhistoricalsociety.com>



## SHREWSBURY COMMUNITY CALENDAR

May 27	12noon	*Prayer Shawl group meets upstairs in the Meeting House
May 27	7pm	**Forest Health" Focus Group Discussion at the Town Office, 9823 Cold River Rd.
May 31	4-6pm	*50 <sup>th</sup> Anniversary program at the Shrewsbury Library

June 1	4pm	*Writer's Group meets at the Library
June 2	3pm	*Shrewsbury Historical Society meets at the Museum
June 13	6pm	*Stockwell Brothers concert at the Meeting House, 88 Lottery Road
June 14	9am	*Nature Scavenger Hunt at Jockey Hill Farm at the end of Coldham Road,
June 15	4pm	*Famous Books Book Club meets at the Library
June 20	4-6pm	*Wine tasting at Pierce's Store
June 21	10am	*Story Hour at the Shrewsbury Library
June 21	4pm	*Poetry group reading by the library writers group at the Shrewsbury Library
June 22	4pm	*Science Book Club meets at the Library
June 24	12noon	*Prayer Shawl group meets upstairs in the Meeting House
June 25	7pm	*Northam Cemetery Association Annual Meeting at the Northam Fire Station
June 27	6pm	*Mojo Birds concert at the Meeting House, 88 Lottery Road
June 28	2pm	*Sandglass Theatre presents PUNTSCI at the Russellville Schoolhouse

\*see elsewhere in newsletter for details

### **TIMES OF SHREWSBURY**

Online at

[www.shrewsburyhistoricalsociety.com](http://www.shrewsburyhistoricalsociety.com)  
[www.shsrewsburyvt.org](http://www.shsrewsburyvt.org)



**Deadline for submission to  
*Times of Shrewsbury* is by  
 5:00pm  
 on the 20<sup>th</sup> of each month.**

### **REGULAR MEETINGS and EVENTS**

Selectboard Meeting	1 <sup>st</sup> & 3 <sup>rd</sup> Wednesdays – 6:30pm at Town Office
Bone Builders	Tuesdays & Thursdays--May-Oct: 9-10am; Nov-Apr: 10-11am at Meeting House
Development Review Board	4 <sup>th</sup> Wed -7pm at Town Office; check town website for agenda
Library Trustees Meeting	2 <sup>nd</sup> Tuesday – 7pm at Shrewsbury Library
Mill River Unified Union School Board Mtg	1 <sup>st</sup> Wed 7pm @ MRHS & 3 <sup>rd</sup> Wed. 7pm at MRHS unless otherwise warned
Planning Commission	2 <sup>nd</sup> & 4 <sup>th</sup> Tuesdays 7pm at Town Office
Prayer Shawl Group	4 <sup>th</sup> Tuesday at 12noon upstairs at the Meeting House
Religious Society of Friends (Quakers)	Sundays – 10am via Zoom; contact wildernessfriends@gmail.com
Shrewsbury Community Church	Sundays – 10:30am - Worship service
Shrewsbury Conservation Commission	1 <sup>st</sup> Tuesday @ 5:15pm at 450 Frank Lord Rd
Shrewsbury Historical Society	1 <sup>st</sup> Monday- 3pm at the Museum
Shrewsbury Historical Society Museum	Open 1-3pm Sundays only from July 6 to October 26, 2025
Shrewsbury Singers	Sundays 9-10:30am and Tues 6:30-8:00pm @ Meeting House
Shrewsbury Sno-Birds	2 <sup>nd</sup> Tuesday – 7pm at Southside Steakhouse in Rutland
Shrewsbury Volunteer Fire Department	Thursdays – 7pm at the Cuttingsville Station

### **Shrewsbury Town Website: [www.shrewsburyvt.org](http://www.shrewsburyvt.org)**

Clerk's Office	492-3511	Mondays & Thursdays 8:30am-1pm; Wednesdays 1pm-6pm (Fax 802-492-3383)
Town Garage	492-3656	(Follow prompts to report roadway blockage on non-work days)
Listers	492-2009	Available by appointment
Treasurer's Office	492-3558	Monday 9am-11am
Transfer Station	492-3867	Sunday 8am-4pm ~ Wednesday 12noon-6pm
Library	492-3410	Hours: Mon 10am-12noon; Tues 7-9pm; Wed 10am-5pm & 7-9pm; Thurs 7-9pm; Fri 10 12noon; Sat 10am-12noon
Meeting House	492-6050	Reservations: 492-3361 or <a href="mailto:julanne@vermontel.net">julanne@vermontel.net</a>
News Flash Email:	<a href="mailto:vtbenbeano@gmail.com">vtbenbeano@gmail.com</a> or <a href="mailto:benbeano@vermontel.net">benbeano@vermontel.net</a>	an email list for Urgent and reminder news information
Cuttingsville Post Office	1-802-230-1996	<u>Window Hours:</u> Mon-Fri 7:30am-10:30am and 11:30am-2:30pm; Sat 8am-11am

Lobby Hours Mon- Fri 7:30am-5:00pm and Sat 7:30am-11am

Burn Permit: Forest Fire Warden Kevin Brown 802-345-8668 or, Deputy Fire Warden Al Ridlon, Jr. 802-282-3642

Animal Control Officer: Adrienne Raymond 802-492-3578

1<sup>st</sup> Constable: Aaron Haupt 558-9980

Game Warden: Tim Carey 793-2776

Emergency Management Aaron Korzun 492-3362

Green Mountain Power outage 1-800-451-2877

Medical-Police-Fire Emergency Dial 911

Ambulance 773-1700

Rutland Hospital 775-7111

[Updated 5/7/2025]

## SHREWSBURY SELECTBOARD MINUTES

*The Selectboard meets the 1<sup>st</sup> and 3<sup>rd</sup> Wednesday at 6:30pm at the Town Office.*

### April 30, 2025: Minutes of Special Selectboard Meeting

**Present at meeting:** Selectboard members: Aaron Korzun, Marc Cimonetti, Francis Wyatt. Planning Commission members: Laura Black, Connor Self. Regional Planning Commission: Devin Neary.

**Members of the public:** None

The meeting was convened at 7:00 PM

**Agenda:** Motion made by A. Korzun to follow the agenda. M. Cimonetti seconded. All in favor, motion approved.

**2026 Regional Plan:** Devin Neary gave a presentation on the last phase of the Rutland Regional Plan. The Town of Shrewsbury has three weeks to send our comments to the RRPC regarding the proposed land use map that designates areas. We need to decide by June 30th whether we want to opt into Tier 1B? Feedback to the Regional Plan can be provided at [rutlandrrpc.org/plan2026](http://rutlandrrpc.org/plan2026).

Adjourned at 8:15 PM

*Respectfully submitted, Francis Wyatt  
These minutes are unofficial until approved by the  
Selectboard at the next regularly scheduled meeting.*  
~~~~~

### May 7, 2025: Minutes of Selectboard Meeting

**Present at meeting:** Selectboard members: Aaron Korzun, Marc Cimonetti, Francis Wyatt. Road Commissioner: Dan Cavoto. Town Clerk: Rebecca Rice. Planning Commissioner: Laura Black.

**Members of the public:** None

The meeting was convened at 6:36 PM

**Agenda:** Motion made by A. Korzun to follow the agenda with the additions of: Work in ROW for Eastham Rd, Appoint RRPC Commissioners, Request for extension to the 2025 preliminary grand list. M. Cimonetti seconded. All in favor, motion approved.

**Excess Weight Permits:** Aaron Korzun made a motion to approve Excess Weight Permits for Normandin Transit Inc. and Wisells Earth Moving Incorporated. M. Cimonetti seconded. Approved.

**Work in the ROW Permit:** Aaron Korzun made a motion to approve a Work in the ROW Permit for Doug Crowe at 1037 Bailey Rd, following the Road Commissioner's recommendations. Francis Wyatt seconded. Approved. Aaron Korzun made a motion to approve a Work in the ROW Permit for Phillip Severy at 315 Eastham Rd. Francis Wyatt seconded. Approved.

**Pavement Bids:** Reviewed two bids for paving on CCC Rd and Wilmouth Hill Rd. Fuller's bid was for \$91/ton, which

comes to a total of \$157,248. Pike's bid was for \$80.79/ton, which comes to a total of \$143,159.88. Aaron Korzun made a motion to select the Pike Industry bid for the paving job. Marc Cimonetti seconded. Approved.

**RRPC Commissioners Appointments:** Aaron Korzun made a motion to appoint Laura Black as a RRPC Commissioner and Aaron Korzun as the Alternate. F. Wyatt seconded. Approved.

**Request for extension to the 2025 preliminary grand list:** Aaron Korzun made a motion to approve the Listers' and Assessor's request of a 30 day extension to file the 2025 Preliminary Grand List. F. Wyatt seconded. Approved.

**Class 4 Roads Reclassifications:** Discussed process regarding reclassifying Class 4 roads. Determined that we need to talk with our Town Attorney before proceeding with specific road reclassifications.

**2025 LEMP:** Aaron Korzun made a motion to approve the most recent draft of the Local Emergency Management Plan (LEMP). M. Cimonetti seconded. Approved.

**New Business/Open to the Public:** A Town resident called and complained that trash tickets are no longer sold at the Transfer Station. The State and the Treasurer has decided that we should only sell tickets at the Town Office and Pierce's Store.

**Review Minutes:** A. Korzun made a motion to accept the 4/16/2025 and 4/30/2025 Selectboard meeting minutes. Seconded by M. Cimonetti. Approved.

**Review Orders:** F. Wyatt made a motion to approve Selectboard Orders #5 for \$7,720.53 and Road Orders #5 for \$11,664.83 and Selectboard Orders #4A is corrected to \$2,878.26. Seconded by M. Cimonetti. Approved.

Adjourned at 8:08 PM

*Respectfully submitted, Francis Wyatt  
These minutes are unofficial until approved by the  
Selectboard at the next regularly scheduled meeting.*  
~~~~~



**Thrive Center**  
OF THE GREEN MOUNTAINS

Serving the Community  
with Excellence and Compassion  
Since 2000

Chiropractic Care • Applied Kinesiology  
Therapeutic Massage/Bodywork  
Holistic Health Education • Nutritional Supplements  
Coaching • Worksite Wellness

**Joseph P. Donohue, DC    Lisa Marie Donohue, MA, LMT**

68 South Main St, Wallingford, VT • 802.446.2499 • [www.instagram.com/thrivecentervt](http://www.instagram.com/thrivecentervt)

**'FOREST HEALTH'**  
**Focus Group Discussion**  
**May 27, 7:00-8:30pm**

Shrewsbury Planning Commission invites interested townspeople and experts to provide input on Shrewsbury's forests to inform our Town Plan.

Participants will discuss the current condition, potential vulnerabilities, recent changes, and current as well as future significance of forests in our town.

This event will be held in-person at the Shrewsbury Town Office. Remote/virtual attendance is available upon request. RSVP appreciated but not required.

For RSVPs/Requests, contact the Planning Commission at shrewsburyvtpc@gmail.com

Watch for future Focus Group Discussion notices on Shrewsbury Planning Commission Meeting Agendas and on the town website in the 'Town News & Announcements' section of the home page.

*~Submitted by Laura Black,  
Chair of Shrewsbury Planning Commission*

**Northam Cemetery Association**  
**Annual Meeting**  
**Wednesday June 25 from 7-7:30pm**  
**Northam Fire Station**

Townspeople and all interested parties invited!

Any questions please contact:

Catherine Carrara, Secretary-Treasurer at 802-492-6137

**NEWS FROM THE TOWN CLERK**

Outing Club Application: If you need a printed application for the Outing Club, they are now available at the Town Office.

Green Mtn Passports: Also, if you are 62 or older, you can obtain a Green Mountain Passport for \$2.00, which provides free day use and access to Vermont State Parks.

Dog License: Although the period to license dogs without a \$4.00 penalty expired on April 1, 2025, it is not too late to register your dog with the Town Clerk. This is required by state law. The fee is now \$15.00 for a spayed or neutered dog, and \$19.00 for an intact dog.

**Updating Voter Checklist:** The Board of Civil Authority has gone through the checklist as to voters we believe are no longer Shrewsbury residents and will be sending out letters to them asking them to respond as to whether they should be taken off the checklist. If you have a family member who no longer resides in town and is on the checklist, it would be great if you could let me know and provide me with their current address. Copies of the Checklist are posted at Pierce's Store, the Post Office and the Town Office.

Covid Tests: Some COVID tests are still available at the Town Office.

If you have any questions, feel free to contact me at 802-492-3511, 9823 Cold River Road, Shrewsbury, VT 05738, or shrewsburyclerk@vermontel.net.

*~Submitted by Rebecca A. Rice, Shrewsbury Town Clerk*



*Please join us on  
Saturday, May 31st 4-6 p.m.  
to celebrate the 50th Anniversary  
of the Shrewsbury Library*

**Panel Discussion with Longtime Trustees & Friends,  
Moderated by Cabot Spatz (Meeting Room)**

**Finger Food and desserts Reception in the Library!**



## NEWS FROM LAUREL GLEN ASSOCIATION (LGA)

A meeting of Laurel Glen volunteers was held on Apr 27. We met to discuss the 2025 season and plan open houses, workdays in the conservatory, clean-up, cemetery tours, and chances to learn Victorian parlor and lawn games. It promises to be a fun season.

Contact me at [Laurelglen.bowmanmansion@gmail.com](mailto:Laurelglen.bowmanmansion@gmail.com) to get involved in upcoming events! Visit our Facebook page at <https://www.facebook.com/share/g/1BYnNb3DXh/> and help by making a donation today at <https://gofund.me/f0d486d9>

The Bowman Mausoleum was built 1880-1881, and upon unveiling, it was dubbed the "Taj Mahal of Vermont", one of the most attractive tombs in America. Its unique Grecian design (not to mention exorbitant price tag) quickly drew attention as a tourist attraction and brought people from near and far. The first mention of the tomb as a tourist spot comes in the Rutland Daily Herald of June 1881.

The mausoleum was complete for only a week, and nearly 1,000 people had already come to see it. An article in the Vermont Tribune of July 1881, relates the misadventure of a group of people who came from Ludlow to visit the mausoleum only to be caught in a terrible rainstorm. A July 1881 article tells of a group of 30 Ludlow residents who rode to Cuttingsville to see the mausoleum. They eagerly purchased photographs of the structure and were "impressed by its grandeur". A six-horse team carried an enthusiastic group from Cavendish to Laurel Glen in August 1881.

On Sept 23, 1887, the same newspaper reports that the Grey family of Middletown Springs spent an afternoon at "the" hotel before visiting the mansion and mausoleum. A column in May 11, 1889 Rutland Daily Herald lists the drive from Rutland to Cuttingsville and Laurel Glen as one of the most attractive.

Even after Mr. Bowman's death, it remained a popular destination; another Tribune article, from 1893, shares that the Warners of Ludlow and a "party of city boarders" visited Laurel Glen, the first cemetery they'd see that week. "The tomb, conservatory, fountains, and flowers, are now in perfect order and seem to beacon the weary toiler with their fragrant and fresh shades." (July 28, 1893).

**DID YOU KNOW?** A website is coming!!! More details will be posted in the July edition of the Times of Shrewsbury!  
~Submitted by Freddie Monder



We welcome tennis players to use and enjoy our tennis court this summer. The court is just west of the home at 7983 Cold River Road. Extra racquets and balls are in the red shed adjacent to the court. Come anytime—no need to call!!! ~Taffy Maynard 773-2087

## CELEBRATION OF LIFE FOR LILA WOODARD CARRARA

June 7, 2025, 12 – 4pm  
Shrewsbury Community Meeting House  
88 Lottery Road

The Family of Lila Carrara invites you to join us as we celebrate her amazing life. Lila was a beloved wife, mother, grandmother and great grandmother and a friend to all. We will gather to share our favorite memories and stories in remembrance of her never-ending smile and warm embraces. Join us to toast this fabulous, strong woman who treasured her family and friends more than life itself.

If you have a photograph and/or a note of your remembrance of her, please bring it to share for our memory wall.

Hors d'oeuvres and a variety of foods will be served. Bottled water also will be available. If you wish to contribute a dessert, it will be greatly appreciated. Please bring a beverage of choice and a cooler if necessary.

Weather permitting, we hope to have it outside. Bring a comfortable chair for yourself to sit in. There will be tables and chairs inside the hall for dining. Enjoy spirited music provided by Rick Redington and Tuff Love Band, Lila's favorite local musicians. If you haven't already responded, please text or call Kathy: 802-353-1593 (Leave Message). Thank you.

~~~~~

## CELEBRATION OF LIFE FOR DAVID RICE

June 22, 2025, at 5:00pm  
At Steeplebush Farm

407 Coldham Road, Shrewsbury, Vermont

We will be holding a gathering of celebration in the backyard behind David and Dino's old home in Vermont.

We are pleased that former Shrewsbury resident; Thomas Mousin will be able to join in the celebration. Come with your favorite David story to share, or just come to remember what a special person he was both as a father, grandfather, educator and contributor to the Town and everything else he was involved in.

If you have any questions, please call me at 802-353-1695 or email me at [Steeplebush@aol.com](mailto:Steeplebush@aol.com), or, stop by the Town Office when my little silver car is out front. My nephew Chris Calkins, (David's grandson) and I look forward to seeing my father's friends come and celebrate his wonderful life!! ~Submitted by Rebecca Rice

## MEAT BIRD PROCESSING EQUIPMENT FOR SALE

Two Cones  
Large Scalding Pot Propane Burner  
Feather Plucking Machine.

**Best offer for all.  
Call 802-773-4602.  
Please leave a Message.**





## SHREWSBURY VOLUNTEER FIRE DEPARTMENT

As you travel about our quaint little town this Memorial Day season, you may notice some bright red flags on some of the graves in the local cemeteries. Of course, there are U.S. flags on many which are placed there by school children or the American Legion to honor our veterans going back to the American Revolution. However, the red flags are placed by the SVFD to honor those who at some time since its beginning in 1952 have served our town as first responders. The flags are imprinted with a mosaic of a fire lantern



surrounded by a helmet, fire axe, pick, pike pole, ladder and a fire trumpet. Those are the tools of the trade that certainly each of those former members utilized at one time or another during their service to our community. Whether their service was for a long or short duration, they certainly handled these types of tools. Under the picture, is a banner stating, "Loyal to our duty". And these people were certainly loyal to our community when neighbors and property were in danger. The SVFD is grateful and proud to remember our fallen colleagues and to honor them each year.



Currently, the SVFD places flags in Northam, Shrewsbury Center, Laurel Glen, and East Clarendon Cemeteries. Although we have current lists of those we know, should you have a loved one that you wish to honor who was a former member please let one of the firefighters know, and we will certainly reach out to remember them.

The past month has been a very quiet one for the SVFD with only one call on April 25 for a carbon monoxide alarm at a home on Cold River Road. The situation was checked out, the home cleared, and no one was hurt. The family was able to re-occupy their house once it was cleared.

With the very wet and rainy weather in late April and most of May, there have been no wildfires. However, should you need to burn brush, you must get a permit from one of our fire wardens, Kevin Brown (802-775-6194) or Al Ridlon Jr. (802-282-3642). It's easy and quick to do, and the permit is authorized by a phone call.

During the past month, we were fortunate to have a "slow period", and it gave the department time to work on maintenance, conduct meetings, plan training for the upcoming year, and give sub committees the time to look at plans for vehicle and equipment upgrades which are long overdue.

With summer months upon us, we all enjoy outside events such as barbeques, camping, fireworks, hiking and getting out to enjoy the nice weather, should it ever arrive. The SVFD asks that you please take the time to be sure that all these activities are done safely. Have fun but be careful! And should you need assistance for any type of emergency, your SVFD is only 9-1-1 call away.

Please **STAY FIRE SAFE.**

~Submitted by Bob Snarski, SVFD Safety Officer



### BURN PERMITS

If you are plan to burn brush you **MUST** call for a burning permit. **Contact Forest Fire Warden Kevin Brown 802-345-8668 or Deputy Forest Fire Warden Al Ridlon, Jr 802-282-3642.** The landowner is responsible to control a brush fire, ensure you have proper tools, water supply, and people to assist in containing the fire.

### THE SVFD NEEDS YOU!

We need new and younger members. The Shrewsbury Volunteer Fire Department (SVFD) can provide equipment, training, and support. Whether you've had prior experience as a first responder or have no experience at all! We need volunteers. Men or women who would like further information may call Bob Snarski at 492-3505, Barry Griffith at 492-3573, or Jack Perry at 773-3278. No commitment necessary.

### Bone Builders

Tuesdays and Thursdays

November-April: 10-11am

May-October: 9-10am

at the Meeting House on Lottery Road

Free weights and instruction!

Join this friendly group to improve your  
Bones, Balance, and Strength  
More Info: Ginny Buckley (802) 492-3504



**Small Farm Flavor & Quality !**  
**VT Maple Syrup & Maple Treats**  
**Grassfed Beef & More**

- |                  |                   |
|------------------|-------------------|
| - Sirloin Steaks | - Pork Sausages   |
| - Beef Roasts    | - Pork Chops      |
| - Short Ribs     | - Ground Pork     |
| - Ground Beef    | - Ham Steaks      |
| - Ribeyes        | - Chicken Breasts |
| - Briskets       | - Whole Chickens  |
| - Sausages       | - Local Eggs      |

**Fall in love with shopping local at our small Farm Store!!**

**SHREWSBURY MEETING HOUSE  
SUMMER CONCERT SERIES  
FRIDAY, JUNE 13 AT 6pm  
THE STOCKWELL BROTHERS**



Bruce, Barry, Alan, and Kelly Stockwell's music spans traditional and progressive styles, but their trademark acoustic sound features new singer/songwriter material recast with banjo, alternative rhythms, and three-part

harmonies. Featuring 2005 Merlefest bluegrass banjo contest winner Bruce Stockwell, The Stockwell Brothers have performed alongside artists from Bill Monroe, Doc Watson and Earl Scruggs to Mary-Chapin Carpenter, Jonathan Edwards and Asleep At The Wheel, recorded with Mike Auldridge and Phil Rosenthal of the bluegrass supergroup The Seldom Scene, and toured throughout the United States and in Canada and Europe. We're fortunate to have the Stockwells here in Vermont!

Spring Lake Ranch provides delicious food for dinner, available from 5:30 on. Proceeds will benefit the Ranch's financial aid program. And Pierce's Store will bring our favorite 802 ice cream pops!

~~~~~

**FRIDAY, JUNE 27 AT 6pm  
MOJO BIRDS**



They're back! Last year they packed the hall with happy, dancing people. This year we make sure we do the sun dance and celebrate outside! The Mojo Birds (including Shrewsbury's own Silas Hamilton) are a

funky flock based in Durango, CO - playing original dance-y roots funk music, with an Afro-Peruvian flair. Upright bass, keyboards, slide guitar and tight harmonies define the band's music. Their first album, produced by Jano Rix (of the Wood Brothers) and recorded earlier this year at The Studio Nashville, is set to be released this summer.

Marble Valley Kitchen returns with their delectable meals for purchase, available from 5:30 on. And Pierce's Store will bring our favorite 802 ice cream pops!

~~~~~

Please be as generous as you can with your cash, check or Venmo contribution at the concerts. Pay what you are able to. This is all about connecting with your community and having a good time with your neighbors. Bring a chair or blanket. For more info, call Vicky or Paul at 802-492-3649 or follow us on Facebook: Shrewsbury Meeting House Concert Series.



88 Lottery Rd Shrewsbury VT

**2025  
SHREWSBURY  
MEETING HOUSE  
SUMMER CONCERT  
SERIES**

Please bring a Free Will contribution and your own seat. Food vendors on site TBA. All proceeds go to the musicians and the historic Shrewsbury Meeting House.

For more info, please call 802 558-2708

Follow us on Facebook: Shrewsbury Meeting House Concert Series

**ALL Concerts are on FRIDAYS AT 6 PM  
(Indoors if raining)**

- |                 |                                                                        |
|-----------------|------------------------------------------------------------------------|
| <b>June 13</b>  | <b>Stockwell Brothers</b>                                              |
| <b>June 27</b>  | <b>Mojo Birds</b>                                                      |
| <b>July 11</b>  | <b>Gaslight Tinkers</b>                                                |
| <b>July 18</b>  | <b>Rod MacDonald</b>                                                   |
| <b>July 25</b>  | <b>Trio of Aether: Bow Thayer,<br/>Krishna Guthrie, Steve Ferraris</b> |
| <b>August 8</b> | <b>Yankee Chank</b>                                                    |

**RIVERWOOD  
LAWNCARE, LLC**

FREE ESTIMATES

FULLY INSURED

**SPRING CLEAN-UP TIME!!!!**

**PLOW DAMAGE REPAIR/CLEANUP**

**REGRADE GRAVEL DRIVES/PARKING AREAS**

**POWER/HARLEY RAKE**

**STUMP GRINDING**

**DETHATCHING, MULCHING**

**MOWING, TRIMMING**

**POWER BROOM, LEAF CLEAN-UPS**

**BRUSH HOG/WET AREAS**

**802.770.0433**

**riverwoodlawncare@gmail.com**



## GREEN UP DAY 2025

As I write this the temperature barely breaks 40 degrees and gardening and other outside pursuits are on hold. Not so for our annual tradition of cleaning up our roads in Shrewsbury. The air was soft and mellow, just fine for shirt sleeves, and the sun shone, punctuated with fair weather clouds while our dedicated volunteers tossed can after can and other trash into bright green bags. Newly returned songbirds provided background music while we covered nearly every road, paved and gravel, within our town boundaries.



Wilder , Hadley , Minka , Christian, and Linnea

We thank the 78+ volunteers who showed up at Town Hall to munch donuts and drink coffee before setting out to green up. All six dozen baked goods disappeared in no time. Many thanks go to Elena and Harry at Pierces for the delicious food. Then on to the transfer station where Jeremiah St. Pierre greeted us and spread his cheer. He even had some tunes playing to keep us entertained while we sorted through the trash. Along with all the recycled material-metal and plastics, Jeremiah counted 75 green bags that went into the hopper. Probably there were even more when all was said and done. Thanks to Mark Youngstrom for taking the mountain of returnables into Rutland for redemption- \$67 worth to be put towards food for hungry volunteers!



Monica

Looking ahead, I hope that all of you will occasionally scout our roads for trash that accumulates during the warmer months. Remember that Greening Up our Vermont roads needs to happen all year long. For next year, please mark your calendar for the first Saturday in May when we will gather at the town hall to do it all over again. Many thanks!! Job well done!

~Submitted by Connie Youngstrom



### EXCAVATION AND SNOW REMOVAL

- \* Free estimates
- \* Offers seasonal rates

**Nicholas Greene**

Mountain School Road  
Shrewsbury VT 05738

**802.855.1215**  
DIGPROLLC@GMAIL.COM

## WIRENUTS ELECTRICAL LLC

bbates@vermontel.net

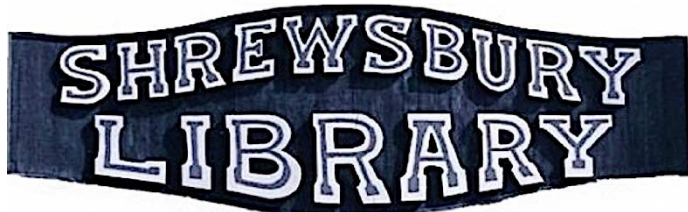
**REBECCA BATES**  
LICENSED  
ELECTRICIAN  
802-492-3406  
802-353-4376



## BRANCH BROOK EXCAVATING LLC

Driveways / Harley Raking / Ditches and Drains /  
Land Clearing and Reclaiming / Stump Removal /  
Retaining Walls; New and Old /Ponds/Power, Gas,  
and Water Line Burial/ General Dirt Work

**Benjamin Turco**  
1269 Branch Brook rd  
Mount Holly, VT 05758  
Phone: (802)770-8964  
branchbrookexcavating@gmail.com



*Library News Submitted by Joan Aleshire*

## CELEBRATING 50 YEARS & COUNTING

Monday 10 am to 12 pm

Tuesday 7 pm to 9 pm

Wednesday 10 am to 5 pm & 7 pm to 9 pm

Thursday 7 pm to 9 pm

Friday 10 am to 12 pm

Saturday 10 am to 12 pm

### STOP IN TO SEE OUR 50th ANNIVERSARY QUILT, REFINISHED FLOOR, PAINT JOB, and NEW MEETING ROOM CARPET!

Wonder if the Library has a particular book or DVD? Want to put a hold on an item or renew one you've borrowed? Please visit [www.shrewsburylibrary.org](http://www.shrewsburylibrary.org).

To suggest a book to add to our collection, contact DONNA SWARTZ for Children's and Young Adult titles ([donnaswartz44@aol.com](mailto:donnaswartz44@aol.com)) and JOAN ALESHIRE for Adult Fiction and Non-Fiction ([joanaleshire@vermontel.net](mailto:joanaleshire@vermontel.net)).

We can request books on Inter-Library Loan, if the cut in federal funding allows. We will buy books depending on our budget and our collection's needs.

MANY THANKS to BEN ALESHIRE for serving on the Board for the past year! He is stepping down as he works to open a photography studio and gallery in Brandon, but will help out as needed, and will borrow books!

TRUSTEE OPENING: With Ben's resignation, we have an opening on the Board of Trustees. If you're interested in joining us, please contact a member of the Nominating Committee: Gail Hartigan ([gailhartigan382@gmail.com](mailto:gailhartigan382@gmail.com)); Ed Sawyer ([esawyer151@gmail.com](mailto:esawyer151@gmail.com)); or Dirk Thomas ([dsthomas46@gmail.com](mailto:dsthomas46@gmail.com)).

THE PAUSE on BOOK DONATIONS continues as we search for ways to handle discarded books. We've had some good suggestions as we hope to continue our annual book sale. We'll keep you posted.

MANY THANKS to Cuttingsville's own WILL PATTEN, who came back to town May 9 for a stimulating discussion about his new book, *Rescuing Capitalism: Vermont Shows the Way*. Check it out at the library, thanks to Will for the donation!

And SPECIAL THANKS to the trustees for pitching in to move furnishings out, and back into, the Meeting Room for the

carpet installation: TRISH, JENNY, LISA, ED, and GAIL. It wouldn't have happened so smoothly without you!

### COMING EVENTS:

Saturday, May 31 @ 4pm: 50<sup>th</sup> ANNIVERSARY CELEBRATION: Panel discussion, refreshments, conversation; please see our ad in this issue!

Saturday, June 21 @ 4 pm: LIBRARY WRITERS' GROUP READING. Please join us to hear what the writers have been up to, and feel free to join in! Contact Penelope Weiss ([pw9@earthlink.com](mailto:pw9@earthlink.com)) or Joan Aleshire ([joanaleshire@vermontel.net](mailto:joanaleshire@vermontel.net)).

Saturday, June 28 @ 2pm: SANDGLASS THEATER presents *PUNTSCHI* at the Russellville Schoolhouse. All ages welcome! Free will donation.

### CONTINUING PROGRAMS:

Sunday, June 1 @ 4pm: WRITERS' GROUP: Let's meet to plan the Open Reading scheduled for Saturday, June 21st. Please contact Penelope Weiss ([pw9@earthlink.com](mailto:pw9@earthlink.com)) or Joan Aleshire ([joanaleshire@vermontel.net](mailto:joanaleshire@vermontel.net)) for info!

Sunday, June 15 @ 4pm: FAMOUS BOOKS BOOK CLUB: Yes, it's Father's Day, but we'll meet to discuss *The Great Gatsby*, the novel by F. Scott Fitzgerald that is 100 years old this year. Copies will be available at the Library.

Sunday, June 22 @ 4pm: SCIENCE BOOK CLUB: *Best Science and Nature Writing 2024*, edited by Bill McKibben. Print and e-books are available. Please contact Margery Salmon ([salmonm@vermontel.net](mailto:salmonm@vermontel.net)) if you'd like a copy.

### New Books include:

- \* *Raising Hare* by Chloe Dalton: The deeply moving memoir of a woman who adopts an orphaned newborn hare, against all advice and her own caution;
- \* *Mark Twain*, the new biography of the writer by Ron Chernow;
- \* *Notes to John*: Journal entries by Joan Didion, published after her death;
- \* *Turning to Birds: The Power and Beauty of Noticing*, by the actor Lili Taylor;
- \* *My Name is Emilia del Valle*, the new novel by Isabel Allende;
- \* *Taking Manhattan: The Extraordinary Events That Created New York and Shaped America* by Russell Shorto;
- \* *My Friends*: A new novel by Fredrik Backman;
- \* *Snafu: The Definitive Guide to History's Greatest Screw-ups* by Ed Helms: Jaw-dropping, appalling, hilarious accounts by the podcast host;
- \* *Gandolini: Jim, Tony and the Life of a Legend* by Jason Bailey: A biography of the late actor and *Sopranos* star;
- \* *Fever Beach*: The latest novel by Carl Hiaasen, if you need some laughs!





### BOOK REVIEWS

\*\*\*\*\* *Fantastic*  
 \*\*\*\*\* *Compelling page turner*  
 \*\*\* *Enjoyable*  
 \*\* *Just O.K.*  
 \* *Not recommended*

### Playground

by Richard Powers

★★★★★

Richard Powers wrote the Pulitzer-Prize-winning, "The Overstory." In this fascinating book, he introduces us to four unlikely friends and spins a spectacular tale about art, technology, and the environment.

Evie, from a very early age, would rather be in the ocean than on land. This has always been her happy place where she meets and befriends sea creatures who are equally curious and enthralled with her. Rafi and Todd meet at an elite high school in Chicago. Rafi loves literature and writing poetry, and Todd's work with computers will eventually lead him to making an extraordinary AI breakthrough. The two young men are polar opposites except for two things: they are both obsessed with "go," a 3,000-year-old board game, and they love the same woman, Ina. Ina has grown up on naval bases in the Pacific with art as her only solace.

Fantastically, the four characters meet up on the small atoll, Makatea, a real atoll in French Polynesia. Makatea and its inhabitants are slowly healing from a harsh history of mining the abundant phosphorous deposits once there. Now, Makatea is chosen for humankind's next adventure: a plan to send floating autonomous cities out onto the open sea. But first, each islander--men, women, and children including the newest inhabitants, Evie, Rafi, Todd, and Ina, will vote to greenlight the project or deny it.

Playground is about the future. It's about our shared humanity. Richard Powers' powerful writing will sweep you away while casting a spell on your senses. I give it Five stars. ~Reviewed by Marilyn Dalick

~~~~~

## Shrewsbury Historical Society

[www.shrewsburyhistoricalsociety.com](http://www.shrewsburyhistoricalsociety.com)

The Shrewsbury Historical Society Museum opens on Sunday, July 6 from 1-3pm, and each Sunday only until October 26.

At the first business meeting on May 5, the members decided to change the time of the next meetings to 3pm instead of 5:30pm. We welcome all to come and see what we're about on June 2 at 3pm in the museum.

When the SHS was formed in 1971, members volunteered their time and saved artifacts to show Shrewsbury's past in a museum, and it all came to be with active members at the helm.

54 years later, we find our active members are few. Our society needs help from younger, stronger hands and ideas., and we sure need a secretary to take minutes. Can you help us? Call 802-492-3324.

*Submitted by Brian Winkler and Ruth Winkler*



## sandglass THEATER

presents

### PUNSCHI

with Shoshana Bass & Jana Zeller

**SATURDAY, JUNE 28**

**@ 2pm**

at the Russellville Schoolhouse,  
18 Crown Point Road, Shrewsbury

**Puppets, Flea Circus & Music  
for ALL ages!**

Sponsored by  
Shrewsbury Library & SAGE

Free Will Donation

Information: Joan Aleshire  
[joanaleshire@vermontel.net](mailto:joanaleshire@vermontel.net)

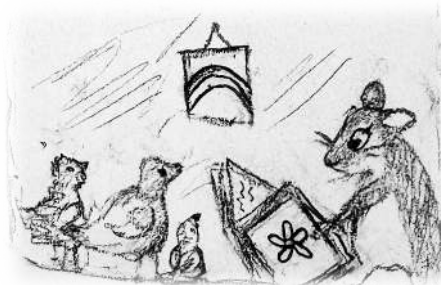
Join us for  
\* Shrewsbury Library \*

### STORY TIME

With Darby and Rey Wellnenius

Saturday, June 21 @ 10am

Snacks and refreshments







## RODENTICIDES KILL MORE THAN RODENTS!

Most homeowners at some time will find they have been invaded by unwelcome pests that can cause greater harm than just chewed food boxes in your pantry or wires in your car. Rats and mice are persistent and can sometimes get out of control. It can be tempting to call an exterminator or grab one of the many marketed rodent poisons to get rid of them. But as participants in an event put on by the Shrewsbury Conservation Commission learned on May 16, this poison is killing or sickening many more animals than the rodents.

Anna Morris, Director of Wildlife Ambassador Programs at Vermont Institute of Natural Science (VINS), described how these newer pesticides – Second Generation Anticoagulant Rodenticides (SCARS) – were much stronger and only one serving was sufficient to kill a rat or mouse. These drugs work by preventing blood from clotting which causes fatal hemorrhaging. Unfortunately, these toxins, once digested by the rodent, stay in its body for up to 11 days and during this time the target rodent may continue to digest the poison bait, becoming increasingly more toxic to any predator that may consume them. Poisoned rodents gradually sicken and become easy prey to other wildlife or your pet, which then in turn become poisoned themselves. Owls, eagles, and other raptors have all been killed or sickened in this way, as those who run rehabilitation centers throughout our country will attest. Numerous studies in New England demonstrate repeatedly that birds of prey suspected of poisoning indeed show a 100% presence of rodenticides in their bodies.

The VT Department of Fish and Wildlife has been conducting research for over 5 years in coordination with other states. They focused on fisher and bobcats to determine if there was any evidence of ingestion of these SCARS. Of the 71 fisher tested, 100%, had some level of exposure to one or more of these pesticides. Bobcats also had a high prevalence, but the sample size of that study was smaller. This was shocking to the researchers, but results were similar in surrounding states. It is suspected that many other forms of wildlife that feed on rodents are similarly being poisoned in this way – fox, coyote, fisher, bobcat, lynx – any animal that feeds on a rodent that has eaten these rodent poisons. Owls and raptors are the most severely affected, since their diet consists almost entirely of rodents. Ironically, they each eat thousands of rodents per year – their presence is a perfect solution to rodent overpopulation. The mammals that ingest poisoned rodents generally have compromised immune systems and abnormal clotting responses. Much more research needs to be done on the long-term effects of the toxin exposure and what constitutes a lethal dose in mammals.

Data shows that the most exposure to SCARS occurs in wildland-urban interface areas – the edge of forested areas but increasingly heavily populated. It makes sense that this is where rodent populations become a problem and the unfortunate solution that exterminators and homeowners reach for is rodenticides.

So how DO you control rodents if you don't use poison? While rodenticides may kill rodents, they don't solve the problem as they merely create a vacant space for more rodents to fill. To be effective, the habitat in your area needs to be altered. You must use a 3-pronged approach known as Integrated Pest Management – remove the food source, remove access to the food, and then kill any remaining rodents.



## TIMES OF SHREWSBURY

ONLINE in Color

<http://www.shrewsburyhistoricalsociety.com>  
and  
[www.shrewsburyvt.org](http://www.shrewsburyvt.org)



## RODENTICIDES REMOVAL: WHAT CAN YOU DO?

**Remove Food Sources:** Rodents will eat almost anything. To starve them out of your space:

- Never leave pet food out for prolonged periods.
- If you feed birds, only use small amounts of seed at a time, bring in feeders at night, and pick up fallen seeds.
- Harvest all food in gardens quickly.
- Keep garbage cans securely covered.

**Exclude Rodents:** Rodents fit through holes as small as a dime. To keep them out of your space:

- Seal any holes in roofs, basements, crawlspaces, and walls.
- Use wire mesh extending partially into the ground to block off spaces under porches.
- Seal openings around cables, pipes, and wires where they enter your space.
- Cap chimneys or vents and remove tree branches that are closer than 3 feet from your house, as well as ivy or dense ground cover.

**Target Remaining Rodents** Without food or access, rodents won't last long. Here are some proven effective methods:

- **Dry Ice.** Inexpensive and cost-effective, it can be purchased at welding supply stores and even grocery stores. Find the rodent burrows and seal up all exits before putting the dry ice down into the burrows.
- **Cayenne Pepper** – Rodents hate it, and you can sprinkle it in their pathways or known nest sites. You can use it in compost bins, bird feeders, and chicken coops; it will not harm or repel birds or chickens.
- **Goodnature™ A24 Rat and Mouse Trap** – Using CO<sub>2</sub>, the A24 trap is certified humane and toxin-free, kills rodents instantly, and automatically resets for up to 24 kills. However, you should use inside another container to prevent other animals from being harmed.
- **Contrapest by Senestech** – This fertility control product is not a hormone and does not bioaccumulate. It does not kill rats; it greatly slows their reproduction rate, helping reduce their numbers.
- **Fresh Cab, Rataway or DeTour RoadBlock with Bio-Repellent** – An all-natural pepper-based repellent irritates rodents' sensory organs and nerve endings, driving them out of contact areas. Many types of repellants-Amazon.
- **Raticator** – An electronic trap that can also be used inside a bait box.
- **Evictor® 10K** – High-intensity strobe light quickly drives out problem wildlife.
- **Pro-Pell** – Essential oil mix is applied to foundations and other areas to repel rodents; used by pest control operators.
- **Snap Traps** inside a bait box - and only in locations—i.e., a garage—where no other animals can reach them. **Never use snap traps in the open!** Birds have been caught, and skunks and other animals that help control rodents seriously injured. Be sure to check and empty the traps regularly. There are many brands of inexpensive, reusable snap traps.
- **Reusable Bucket Live Mouse Trap with Ramp** – You can buy these or make them yourself! A ramp leans up the side of a large bucket with seeds or tasty food at the top. In falls the rodent, with no means of escape. Many can be captured at one time. Audience members shared the success they have seen using this method.

**Finally—never, ever use glue traps.** They are cruel and inhumane and trap other wildlife, like birds.

In closing, the SCC supports pending legislation banning these anticoagulant rodenticides that are having significant negative impacts on animals of all kinds and may even be affecting our water and soil. This bill will most likely be tabled until next year, but we will publicize where to give your input to the committee in the future. In the meantime, we encourage all to stop using poison rodent products and if you see them being used, share this information with the person using it. FYI, a great non-profit with suggested solutions and information is [raptorsarethesolution.org](http://raptorsarethesolution.org)

~Submitted by Louise Duda,  
Shrewsbury Conservation Commission

### Are You a New Landowner in Shrewsbury?



If so, The Shrewsbury Conservation Commission has a Welcome Bag for you filled with books, flyers, and information on all kinds of topics having to do with the management of your land, programs available to you, and access to friendly advice if you'd like it. The SCC, in cooperation with Vermont Coverts: Woodlands for Wildlife and funded in part by a grant, would love to share this welcoming gift.

To receive a Welcome Bag, email  
[shrewsburyvtconservation@gmail.com](mailto:shrewsburyvtconservation@gmail.com)

## The Shrewsbury Community Church



Compiled by Sue Ransom-Kelley

*"Though we know one another's names and recognize one another's faces, we never know what destiny shapes each life. The script of individual destiny is secret; it is hidden behind and beneath the sequence of happenings that is continually unfolding for us. Each life is a mystery that is never finally available to the mind's light or questions. That we are here is a huge affirmation; somehow life needed us and wanted us to be."*

*To sense and trust this primeval acceptance can open a vast spring of trust within the heart. It can free us into a natural courage that casts out fear and opens up our lives to become voyages of discovery, creativity, and compassion. No threshold need be a threat, but rather an invitation and a promise. Whatever comes, the great sacrament of life will remain faithful to us, blessing us always with visible signs of invisible grace. We merely need to trust."*

- John O'Donahue in *To Bless The Space Between Us*



### Awesome Year

The kids have been busy! They had fun making hummingbird feeders and hummingbird food. It's been fun watching the



birds return to Vermont and our feeders. We planted petunias for Mother's Day! We will take a break for the summer and return to the Fun Day Program in September. Special

Thanks to our Leaders for an awesome year: Cortney Allard, Anissa Park, Allison Stone, and Lynette Over!



## Shrewsbury Community Church Calendar

- Tuesday May 27, 12noon-2:00pm: Prayer Shawl Group Meeting Upstairs at Meeting House. Come and knit or crochet! Refreshments will be served. Don't know how? Come and we will teach you! Call Roxanne with questions 802-492-3675.
- Sunday June 1, 10:30: Fun Day program for kids. Worship Service and Holy Communion led by Pastor Karen Braeutigam.
- Sunday June 8, 10:30: Fun Day program for kids. Worship Service led by Pastor Karen Braeutigam.
- Sunday June 15, 10:30: Worship Service led by Pastor Karen Braeutigam.
- Sunday June 22, 10:30: Worship Service led by Pastor Karen Braeutigam.
- Tuesday June 24, 12noon-2:00pm: Prayer Shawl Group Meeting Upstairs at Meeting House. Come and knit or crochet! Refreshments will be served. Don't know how? Come and we will teach you! Call Roxanne with questions 802-492-3675.
- Sunday June 29, 10:30: Worship Service led by Pastor Karen Braeutigam.

## Community Food Shelf

Free Community Food Shelf at the Library in the front entry way. Those in need are welcome to help themselves any time the Library entryway is open. Limited hours are:

Mon 10am-12noon; Tues 7-9pm; Wed 10am-5pm and 7-9pm; Thurs 7-9pm; Fri 10am-12noon; and, Sat 10am-12noon.

**Food Delivery and Assistance** If you are unable to get to the Food Shelf at the library in Shrewsbury, we will deliver groceries to you. If you need items which are not available on the shelf we can provide grocery gift cards. Call Karen at 802-558-5991 or Sue at 802-779-4360 or 802-492-3738.

## Community Needs

- Wedding, Funeral or Memorial Service Requests: Contact Donna Smith 802-492-3367; or Sue Kelley 802-492-3738, 802-779-4360
- Community Helping Hand Requests: Contact Donna Smith 802-492-3367; Sue Kelley 802-779-4360, 802-492-3738; or Karen Lorentz 802-558-5991. Shrewsbury residents experiencing financial hardship. Assistance can be given for basic needs (food, heating, gasoline, etc). If you or a neighbor are in need, please let us know!
- Pastoral Care, Home, Hospital Visitation, Outreach Requests: Contact Roxanne Ramah 802-492-3675 or Ruth Kinne 802- 775-5318.





## Spring Lake Ranch therapeutic community

Welcome, summer! The daily work of the Ranch is in full swing, and we have lots of exciting updates from the past month.

- Despite the rainy weather, this year's Ramp It Up! 5k raised a record-setting \$1,154.39 for the Shrewsbury Volunteer Fire Department.
- Executive Director Rachel Stark went to the Independent Educational Consultants Association conference in Detroit to present on the farm-based therapeutic community model with our sister programs.
- The Rutland County Farmers Market moved back outside for the season, and we're there every Saturday with goods and goodies made by our residents.



*A peek inside the Main House kitchen renovations with Nathan Hewitt*

- We hosted a Professionals Day with fellow VT therapeutic community Averte, which brought psychiatrists, clinicians, and consultants to the state to tour our unique offerings in the field of mental health care.

- Last but not least, the Ranch is wrapping up renovations to the Main House. Our expanded kitchen and prep kitchen spaces should be ready to use this month, with the rest of the work set to be completed by the end of the summer. The frames for our new Transitional Living Program houses are up, and we're continuing to raise money toward our \$18MM Capital Campaign goal so that we can complete the remaining projects. For more info, visit [www.springlakeranch.org/capitalcampaign](http://www.springlakeranch.org/capitalcampaign).



*Rose McCracken and Hal Niblack at the Shrewsbury Fire Station*

This month, we'll be serving up refreshments at the Shrewsbury Meeting House Concert Series on June 13. Stop by and say hello! ~Article by Anna Sutton

## CARAVAN GARDENS

### ~ PLANT SALE ~

**Open Daily 10-6 starting Friday, May 23**

Large variety of vegetable starts, herbs, flowers and perennials!

**McENROE  
FARMS  
ORGANIC  
POTTING  
SOIL!**

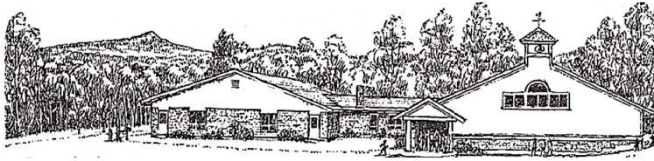


**SEED  
POTATOES!**

**YELLOW, RED  
AND RUSSET  
VARIETIES**

*4536 Route 103 Shrewsbury, Vermont  
(802)-492-3377*





## SHREWSBURY MOUNTAIN SCHOOL

### Important Dates:

5/26: Memorial Day - No School

6/6: Field Day (Rain Date 6/9)

6/10: SMS All school Music Concert and 6th grade Graduation 6:30pm

6/13: Half day and last day of school



### Important Information:

Shrewsbury Mountain School is in need of substitute teachers. If you are interested in serving our school in this important and meaningful way, please contact Angie Sharrow at 802-786-3995. Thank you!

### SMS Orchard:

The 3rd and 4th graders have been caring for the orchard trees throughout the fall and winter seasons. They have been checking on rodent guards, for broken branches and any other problems that arise. We were fortunate enough to get a pruning lesson from SAGE prior to our April Break so the 3rd and 4th graders took the information they already know about caring for the

trees and combined it with new information they learned from Scott and Stephen on pruning and presented it to the school. We followed the three Ds of pruning; dead, diseased or dying. The students then talked about trying to play in areas where they wouldn't be running into the baby trees. We came up



with suggestions and solutions in our multi age groups to move our 2 new picnic tables spread out between the orchard to limit student play in the orchard. Our students are doing such a wonderful job caring for our orchard!

### SMS Playground Update:

We received a SPECIAL DELIVERY of all of the new playground equipment on Thursday, May 15. This will be kept in our lower parking lot and we will begin demolition of the old playground pieces on Wednesday, June 18. The campus will be closed for these renovations until the middle of July. We will be hosting a wood chip spreading event on July 12 with a rain date of July 13. There will also be a Playground CELEBRATION hosted by the SMS PTO on Saturday, August 23 with a rain date of Sunday, August 24 from 12-2pm. More details coming soon!

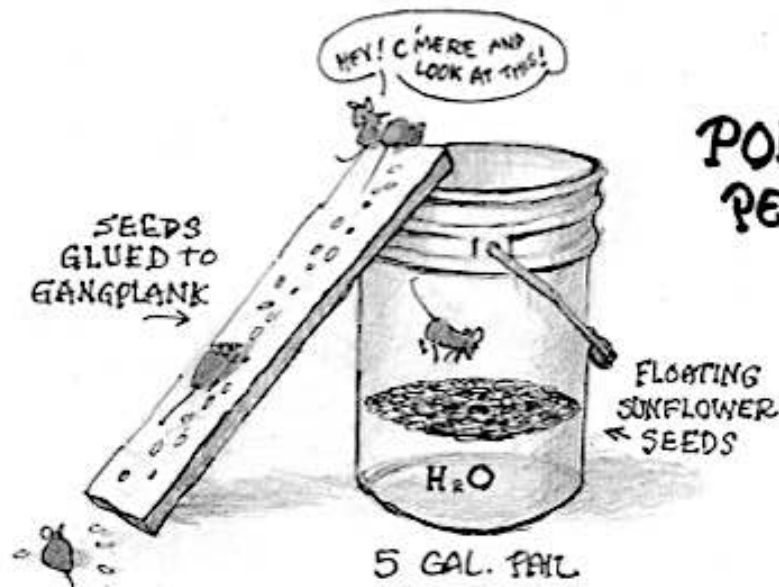
HUGE THANK YOU to our SMS PTO and our school families for appreciating our teachers and support staff during Teacher Appreciation Week!!! Our educators are the best and we are grateful for them!

*Submitted by Kristin Cimonetti, Principal  
802-786-3995 [kcimonetti@millriverschools.org](mailto:kcimonetti@millriverschools.org)*



Shrewsbury Mountain School  
teachers and support staff





## POISON-FREE PEST CONTROL

### Small Farm Flavor & Quality!



**SMITH  
MAPLE CREST  
FARM**

**VT MAPLE SYRUP & GRASSFED BEEF**

Maple Candies	Locally Sourced	Grilling Steaks
Maple Cookies	Pork (cuts)	Ribs, Roasts,
Maple Spices,	Chicken (cuts)	Briskets
Marinades	& Eggs	Sausages
Sugar and Snacks	Ground Beef	& More

Gift bags of Vermont Goodies and Meat Freezer Boxes Available  
OPEN: WED THRU MON 10 AM - 5 PM

2450 Lincoln Hill Road, Shrewsbury, VT 05738

smithmaplecrestfarm.com • 802-492-2151 • maplecrest.info@gmail.com

WE SHIP SYRUP ALL OVER THE USA

### Greetings Shrewsberries!

We are a family of three looking for a permanent home here! Stephen works with local non-profits (including SAGE) and represents Shrewsbury on the Mill River District School Board. Oana is a health care provider in Rutland. Our little one is excited to attend SMS in a few short years...

We would love to create our home in Shrewsbury either by purchasing a house or a piece of land. We envision a 2 or 3 bedroom home on 5+ acres, eventually with animals and fruit and nut trees! If you know about places that may be coming on the market or land that could be subdivided out, we'd love to talk with you. Please reach out to

802-492-3106 or

stephen.abatiell@gmail.com.

~Stephen, Oana, and S

COMMERCIAL/RESIDENTIAL

DRIVEWAYS

**C.N. WEBSTER**

EXCAVATING  
47 RAILROAD DRIVE  
N. CLARENDON, VT 05759  
(802) 558-3275

COMPLETE SITE WORK

SEPTIC SYSTEMS



**PVF Services LLC**

Excavation, Trucking, driveway repair, site prep, building removal, brush grinding and much more!

<b>Neal and Chad</b>	1368 Lincoln Hill
Cell 802 236 8105	Shrewsbury Vt, 05738
Office 802 492 3364	sharrowmaple@gmail.com





## Shrewsbury Conservation Commission Trail Camera Picture of the month



My trail cameras have been busy this Spring! The bears are back and have been well behaved so far. They can do a lot of damage to a trail camera. I use metal boxes to protect them, and hope I don't get a persistent bear posing for a selfie!



Gray foxes are denning nearby and regularly travel past the cameras on their way to find food for their kits.



A moose with antler buttons was a fun capture, with its head filling the camera screen!

If you have a picture of a track or wildlife capture to share, please contact: Linda Shelvey, [lpurdyshel@gmail.com](mailto:lpurdyshel@gmail.com).

~ Submitted by Linda Shelvey

## A Great Scavenger Hunt for All Ages! Something for everyone to find and explore!

The Shrewsbury Conservation Commission invites you to join us at

**Jockey Hill Farm**  
**at the end of Coldham Road**  
**Saturday June 14 at 9:00am**

Come ready to tromp in the woods and on trails searching for items on a pictorial list. Fun for the whole family, and younguns' and oldsters too. Bring bug repellent, water, wear hiking shoes, and take along a smartphone and binoculars if you have them.

You'll be sure to find things that you didn't even know about before and get a fresh appreciation of natural world. Rain (unless torrential) or shine.



Know what this is?



How about this?

We can accommodate a large group so reservations not required but are helpful in planning, so RSVP if possible to Weezie: [conservationcommission@shrewsburyvt.org](mailto:conservationcommission@shrewsburyvt.org) (802) 558-5519

**Mother's Day** 🐛🐛🐛🐛🐛🐛🐛🐛 **Father's Day**

## The Roving Reporter Asked: What can you tell me about Black Flies?

- "They hurt, they're mean, and they bite!" ~CC
- "They like running water; so when we have a wet spring, we have more black flies!" ~KB
- "They bite, and they are crazy this year so I am staying indoors!" ~MG
- "Are they the little ones or the big ones?" ~HD
- "I've always heard they are out between Mother's Day and Father's Day." ~ME
- "I can't get gardening done when they're out!" ~LH
- "I avoid them. I spray my neck, wrist, and ankles....and wear a hat!" ~RR
- "I don't think we have them around the house because of the barn swallows." ~JS
- "I forgot my hearing aids...what did you say?" ~CG

**Mother's Day** 🐛🐛🐛🐛🐛🐛🐛🐛 **Father's Day**



**Discover horses  
from the ground up!**

**Jennifer McDermott**

Balanced Seat for all Disciplines

Centered Riding, Instructor

Therapeutic Riding

PATH, Int'l, CTRI & ESMHL

&

Experience the deep connection  
of working at liberty!

Over 35 years of experience.

203 434 9505

jamequine.com

## TRACTOR WORK

For all your loading, lifting,  
digging, grading, grappling,  
winching & brushhogging needs.



Rob Littmann  
802-774-8835  
Shrewsbury, VT

Front Loader: Bucket, Grapple,  
Pallet Forks, Bale Spear

Backhoe: 16" Bucket & Thumb

Brush Hog, Forestry Winch,  
Grading Blade, York Rake,  
Pallet Forks, Bale Spear

## ROAST BEEF SUPPER SATURDAY, JUNE 14, 2025

At the Odd Fellows Hall  
37 Lake Street, Belmont, VT 05730  
Starting at 5:00pm

ROAST BEEF SUPPER

Mashed Potatoes, Gravy, Vegetables, Rolls and  
Desserts

All You Can Eat – Family Style

Take outs Available Starting at 4:45pm  
Adults \$15 -- Children 12 Yrs & Under \$8

Benefit

Mount Holly Volunteer Fire Department  
More Info Call 802-259-2460

**Your one stop shop  
for all things local  
and handmade:**

- MAPLE SYRUP
- CRAFT FOOD
- CIDER & BEER
- ANTIQUES
- & MORE!



Open Wed-Sun: 11am-6pm (802) 772-0507  
The Olde Barn, 5444 VT 103 Hello@wallyscorner.com  
Cuttingsville, VT 05738 www.wallyscorner.com

## Upcoming Events & Announcements

May 24th 10am-11am: Let's Pot Succulents!

🌱 Learn tips for keeping succulents thriving in your indoor or outdoor garden. We'll mix soil & plant succulent cuttings in mini stoneware planters made by Paula Van Valkenburgh of Shrewsbury.

SUMMER BREAK: Family Road Trip!

🚗 The store will be closed Monday June 16th until Wednesday June 25th. We're taking our now 2 year old on his first road trip. (Wish us luck!)

June 29th 10am-11am: Dried Flower Craft!

🌸 Keep your eye out for more details in our next flyer.

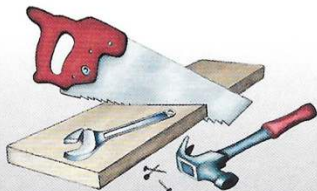
## D. F. LEIN HANDYMAN SERVICE

Rutland VT

Dale F. Lein

704-728-7442

dflein@yahoo.com



Fully Insured  
Home Repairs  
Woodworking Projects





In May Julia Bonafine's K1 class cooked up ratatouille with veggies that were grown in the school garden last summer and frozen. The garden to plate experience is beginning to come full circle for these students! Now in June, we are finally at the start of this year's growing season up here in Shrewsbury. Julia Bonafine, Scott Courcelle, and Ryan Fitz-Beauchamp have been helping the students at SMS prepare the school garden beds over the end of May, and will be leading school plantings through the end of the school year. We will weed and water over the summer to ensure an abundant garden for the students' return at the start of next school year. Stay tuned as we may post summer volunteer garden days in upcoming issues of the Times.

At the Russellville Schoolhouse, Scott has begun developing the old apple trees. They have been prepared for new graft varieties for next winter. Hopefully there will be many tasty types to try in the coming years at future music jams. This year's last music jam was held on May 10. Enjoy music at the Shrewsbury Concert series this summer and we will see you again for schoolhouse jams again in the late autumn. Thank you to all who came to listen, play, and share their music.

The Library Writers' Group will share their work with a poetry group reading at the Shrewsbury Library on June 21st at 4 PM. Please come on down in support of our local arts!

SAGE, Shrewsbury Agricultural Education & Arts Foundation, has a mission to support and promote sustainable farming and other arts that nourish community life. For more information about SAGE: contact Stephen Abatiell at [educate.sage@gmail.com](mailto:educate.sage@gmail.com), Joan Aleshire at 492-3550 or visit [www.sagevt.wordpress.com](http://www.sagevt.wordpress.com). Follow us on Facebook for up to date event details at ShrewsburySAGE and find our sustainability and arts videos at [www.youtube.com/@sagefoundation](http://www.youtube.com/@sagefoundation).

~Submitted by Stephen Abatiell



## SNO-BIRD NEWS

Well, as usual the Sno-Birds have been busy even with no snow. Scott and Dave and others have been out picking up our signs so they do not get damaged by the weather or people. We also closed the gates to keep traffic out and tread damage down.

I just completed the online construction seminar which is required by VAST if we are looking for any grant money like the bridge replacement that I mentioned last month. It takes about five hours to watch and take the quizzes. There is also a chainsaw safety course that VAST wants as many members take as possible. This also is an online course to give everyone some basic safety points that all of us need to see to refresh our minds. I took it last year but they also want it a yearly thing also. I will take it as soon as I can.



The club also sold food at the Central Vermont Motorcycles Can-Am 2- and 3-wheel event on May 10. This was a fundraiser that was offered to us. The weather was rainy and cool but all in all they had a pretty good turnout. We sold some food and talked to people about our club. Dave brought his snow coach (see photo) and that brought a lot of interest. The food was any donation that the people wanted to give, no set price. Mike, Dave, Scott, Doc and I were serving the food. I want to thank all that helped set it up and get the equipment there!

I hope that the rain will let up a little so we can do the bridge and get the trail work done without being in the mud. Everything is very wet with water standing on top of the ground so even ATVs will be doing damage to the trails that we might have to fix later. I hope that all of the unauthorized users of the trails keep this in mind also to help us out.

~Submitted by Roy Arthur







1595 Healdville Road Lots 1 & 2, Mount Holly, VT

## Mountain Escape with Guesthouse

BEDROOMS/BATHROOMS

4/4

LIVING AREA

3,653 Sq. Ft.

ACREAGE

16.53 +/-

PRICE

\$760,000



Gail Beardmore  
Gail.Beardmore@EVrealestate.com



126 Main Street, Ludlow, VT 05149 +1 802-975-0338  
okemo.evrealestate.com



Uli Donohue  
Uli.Donohue@EVrealestate.com

©2025 Engel & Völkers. All rights reserved. Each brokerage independently owned and operated. Engel & Völkers and its independent License Partners are Equal Opportunity Employers and fully support the principles of the Fair Housing Act.





## IT'S THAT TIME OF YEAR AGAIN

*We're Looking for Anyone who wants to Come Join the Fun!*

*Become a Volunteer for Rainbow Riding Center's Therapeutic Horsemanship Program*



No experience necessary,  
just the desire to help children  
and adults overcome challenges  
and have FUN with Horses!

*(non-horse-related opportunities  
available as well)*

**We will be holding  
Volunteer  
Orientation**

**Sunday, June 8<sup>th</sup>  
starting at 10:00  
a.m.**

**At Stone Wall Farm, 892 Tarbellville Rd in Belmont**

Please come see if this is your cup of tea. Visit our website at  
[rainbowridingcenter.org](http://rainbowridingcenter.org) or see us on Facebook and Instagram



For additional information please email [janetupton@rainbowridingcenter.org](mailto:janetupton@rainbowridingcenter.org)





## PIERCE'S STORE

**802-492-3326**

[www.piercesstore.com](http://www.piercesstore.com)

**Hours: 8am to 6pm**

*Closed Mondays*

### Looking for Weekend Volunteers

Pierce's Store is looking for weekend volunteers to help run our register. Saturdays and Sundays are fun days here at the store and this is a wonderful opportunity to meet thy neighbor and support our community. Volunteer shifts are only 4 hours. If you are interested, shoot us an email at [piercesmanager@gmail.com](mailto:piercesmanager@gmail.com).

### Pierce's Adds 150+ New Items



*Elena and Lavinia with a lot of boxes to unpack!*

After much ado we're thrilled to announce that we've opened an account with a new distributor – a big feat for our little store! We received a whole pallet for our first order on Friday May 16 containing 150+ new items like pastas, organic canned tomatoes and beans, new soft drinks, gluten-free crackers, ingredients for Asian cooking, quality cooking oils and vinegars, salted peanuts, chocolate covered nuts, wasabi peas and dried fruits, salad dressings, dips, salsas, chocolate bars, cocktail mixers and more. We've kept margins on these items LOW to encourage volume and rapid turnover. As we scale up our offerings, we hope you think of us as your go-to grocer. We think there's something here for everybody and every shopping list. ~Harry DiPrinzio

### Hello friends and neighbors!

It's been a while since I got to write an article about Pierce's for the Times, but I am just as excited as ever to share what's going on! Our amazing management team in the store has really leveled up the kitchen with better food options than ever before, so if you haven't popped by in a while to check out the breakfasts, lunches, and baked goodies then you are really missing out on some excellent meals and treats. The shelves are also incredibly well stocked with everything from local produce to staple groceries to an ever-expanding wine and beer selection. Keep an eye out for other new surprises in every corner of the store!

This month, we have a few other events to join up for as well. June 20 will be the next installment of Sandy's wine tastings where you can try out some of his latest selections while getting some history and science lessons about them as well as some suggestions for when and where to have a taste. We also have a kids movie night planned with popcorn. We don't yet have a date for that one, but keep an eye on [piercesstore.com](http://piercesstore.com) for updates and a schedule of all of our upcoming events -- including my personal favorite: The July Blueberry Festival!

If you are interested in finding something to do this summer, the store is always in need of volunteers for a variety of tasks. Whether you are interested in working shifts in the store so you can hang out with your neighbors while helping out, or if you would like to help with the events, we could really use you! It's a lot of fun, just pop on in and let us know.

See you at the store!

~Submitted by Bob Knudsen, Pierce's Board of Directors

~~~~~

**\$5 OFF \$75 or more!**



Bring this coupon with you at time of sale.  
Expires Sunday June 30, 2025



### Summer Wine Tasting June 20

Pierce's will celebrate the summer solstice with wine, music, and tasty treats. The jazz quintet that packed Pierce's Garage during our Thanksgiving wine tasting last November will be back by popular demand, accompanied by wines by the glass and tasty appetizers. Sandy will be hosting a wine tasting on the porch of Pierce's Store which will feature a guest appearance from Tim Banks, the owner of 802 Distributors, a discriminating distributor of fine wines which recently began delivering to Pierce's Store. Tim will be discussing a sampling of his wines the store now carries. Please join us at Pierce's on Friday June 20 from 4pm to 6pm for a convivial session.

~Submitted by Sandy Bragg

The Times of Shrewsbury  
PO Box 373  
Cuttingsville, VT 05738

PRESORT STD  
US POSTAGE PAID  
SHREWSBURY, VT  
05738  
PERMIT NO. 2

To: Postal Patron

---

Donors are recognized for the remainder of the calendar year in which their donation is received. The *Times* is mailed to all residents of Shrewsbury and is also available online. The cost of printing and mailing is made possible through advertising and donations and are very much appreciated, but are not tax deductible. Donations can be made to: *Times of Shrewsbury*, P.O. Box 373, Cuttingsville, VT 05738. **THANK YOU!**

---

Marti Andersen  
Gary Arthur  
Roy & Cindy Arthur  
Nate & Angela Bailey  
Steve Banik & Virginia Gundersen  
Randell & Dianne Barclay  
Michael and Elizabeth Bedesem  
Nancy Bell  
Ludy & Sara Biddle  
Rich & Cynthia Biziak  
Laura Black  
Karen Braeutigam  
Kristi & Sandy Bragg  
Virginia & Dan Buckley  
John & Linda Calotta  
Christina Clarke  
Peter & Theresa Clarke  
Charleen Cole & Ed Garrow  
Marilyn Dalick  
Sally Deinzer  
Philippe & Linda Ducrot  
Stan & Louise Duda  
Lizzie & Wayne Emmons  
Nils and Pamela Erickson  
Kathi & Tim Faulkner  
Gene & Kathy Felder  
Liz Flint  
Todd Frederick & Michelle Greene  
David & Jo Fretz  
Scott Garren & Heather Shay  
Jonathan Gibson & Eliza Mabry  
Rick Gile & Sue Brown  
Mark & Carol Goodwin  
Pam & Peter Grace  
Robert Greenwald  
Barry & Barbara Griffith

John & Tamako Guidry  
Carole Cook Haas  
John & Betty Heitzke  
Connie & Bob Hoelscher  
Carmine Iannace & Rita Gyls  
Martha Herbert Izzi  
Diane Jakobsen  
Jack & Betsy Jesser  
Ellen Jorgensen  
Martin & Julia Kimmig  
Lisa King  
Michael & Angie Lauri  
Ed & Clare Mangine  
Gerry & Chryl Martin  
Paddy and Alice Martin  
Stephen & Patricia Martyn  
Taffy Maynard  
Lynn McDermott & Becky Bates  
Jeff & Pam Monder  
Moody Family  
David & Georgia Mosher  
Jack & Joan Mulqueen  
Ray & Cheryl Noble  
Trish Norton  
Allan Patrick

Fran Patten  
Jack & Sharon Perry  
Ken & Coral Petretti  
Bob & Susan Quinn  
Roxanne Ramah  
Melissa Reichert  
Rainbow Riding Center  
Helen & Andy Richards-Peelle  
Ridlon Family  
Ed & Judy Ryan  
Suzanne Savage & Irvin Gordon  
Brian & Patricia Sedaille  
Alan & Linda Shelvey  
Shrewsbury  
Community Church  
Conservation Commission  
Library  
Mountain School PTO  
Volunteer Fire Department  
Donna Smith  
Bob & Sally Snarski  
John C. Stewart  
Jess & Ariane Torres  
Liesbeth van der Heijden  
Ann Vanneman  
Lana Vanucchi  
Arlene Wallett  
Reesa Watson  
Howard & Deborah Weaver  
Jay Webster  
Phyllis & Michael Wells  
Nancy West  
Lee Wilson  
William & Peggy Wilson  
Brian & Ruth Winkler  
Mark & Connie Youngstro

