



Times of Shrewsbury



July 2025

SHREWSBURY HISTORICAL SOCIETY

2026 CALENDAR



The fun new 2026 SHS Calendar is headed for your mailbox soon! There are many rare vintage photos, some obtained from glass slides, moon phases, monthly Vermont history tidbits, and more!

This calendar is being mailed to each household in Shrewsbury free of charge! We hope you can help support the Society with your donation or membership. We have included a remittance envelope within the calendar for your convenience. Thank you!

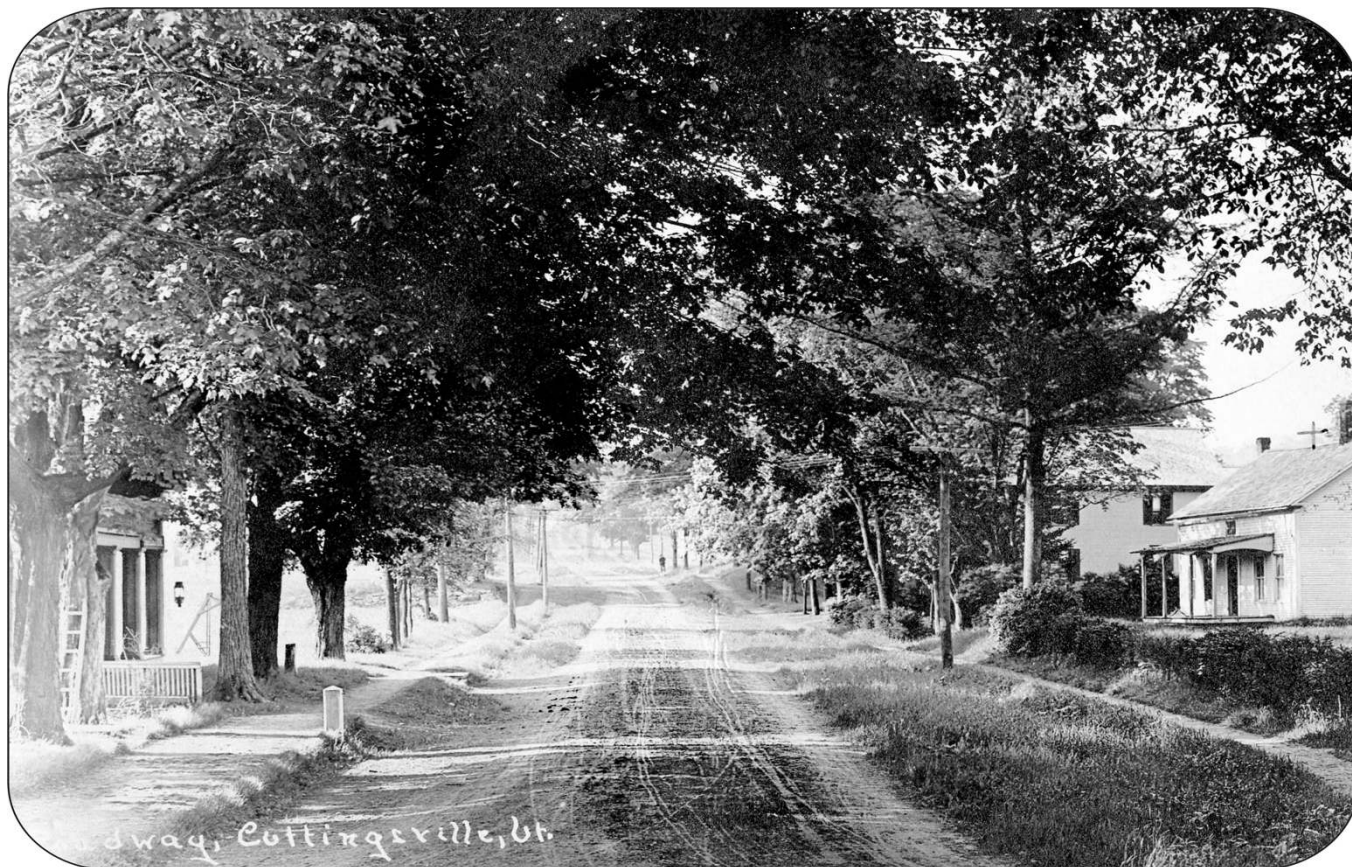


JUNE						
Sun	Mon	Tue	Wed	Thu	Fri	Sat
31	1	2	3	4	5	6
7	8	9	10	11	12	13
14	15	16	17	18	19	20
21	22	23	24	25	26	27
28	29	30				

Have you ever been to the SHS website? There are hundreds of photos of yesteryear, maps, videos of the 1957 TV show with Robert Frost that was filmed here in Shrewsbury, and lots more to browse!

~Shrewsbury Historical Society

www.shrewsburyhistoricalsociety.com



Vermont State Senators:

Brian Collamore: bcollamore@leg.state.vt.us

Terry Williams: twilliams@leg.state.vt.us

David Weeks: dweeks@leg.state.vt.us

Vermont State House of Representative:

Kcwinter5783@gmail.com or 802-245-4190

The Vermont General Assembly is in session January thru June. To view committee member-ships, bills that have been introduced, track each bill's progress, and review committee agendas go to www.leg.state.vt.us. During the week you can contact your legislator by leaving a message at the State House by calling 1-800-322-5616 or 828-2228 (the Sergeant-At-Arms' Office).

United States Senators:

Senator Peter Welch

www.welch.senate.gov

Vermont Office: (800) 642-3193

Washington D.C. Office: (202) 224-4242

Senator Bernie Sanders

www.sanders.senate.gov/contact

Vermont Office: (800) 339-9834

Washington D. C. Office: (202) 224-5141

United States House of Representative:

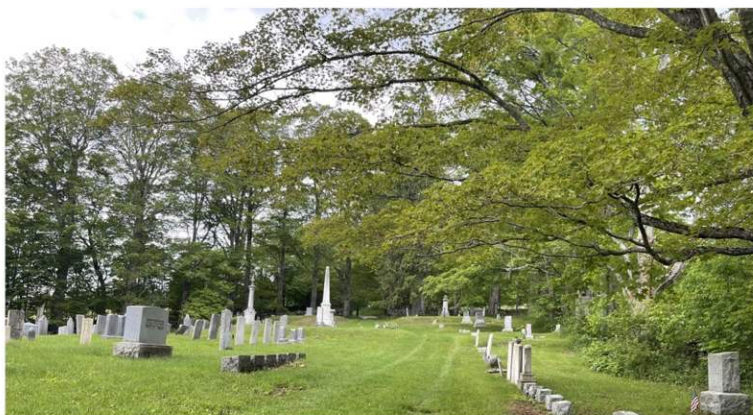
Representative Becca Balint

Vermont Office: 347-461-4982

Washington D. C. Office: (202) 225-4115

Revised 2/1/25

**The Shrewsbury Cemetery
could really use your support**



Did you know we depend on the generosity of donations from families, friends, and our community to cover annual maintenance costs for mowing, tree care/removals and seasonal cleanups.

Your tax deductible donation will help us respectfully keep our earliest Shrewsbury settlers and more recent residents "forever home" well cared for.

Checks can be mailed to:

Shrewsbury Cemetery Assoc, Inc.

2450 Lincoln Hill Rd | Shrewsbury VT 05738

Give us a call @ 802-492-2151 with questions

Or for more donation options.

TIMES OF SHREWSBURY

The Times of Shrewsbury is published monthly from February through December, and compiled by volunteers from material submitted by residents with the goal of informing townspeople of what is happening in Shrewsbury. The views and opinions expressed in articles are solely those of the author and not necessarily those of the editors.

All submissions must be accompanied by the name of the submitting person and are printed at the editors' discretion subject to editing for length and clarity. Letters to the Editor exceeding 350 words will be subject to editing for length. Any information piece or informational political letters (without specific party or vote appeal) will be subject to the guidelines previously described.

A writer of a letter that directly names a Shrewsbury resident or organization in a critical manner must get copies to the resident or organization, and to the Times by the 10th of the month prior to publication or it will not run. If the named person or organization indicates in writing to the writer and to the Times that they choose not to respond, the letter will run. If the named entity responds, the response and initial letter will run in the same issue.

There is no charge for: jokes, poems, nature reports, family event announcements, feature articles, or letters that are not commercial. Also, there is no charge for appropriate notices of free items.

Articles and Advertisements: Deadline for submission is 5pm on the 20th of the month prior to publication; exceptions will be announced in the prior month's Times.

Ads in the Times are for area businesses, local non-profit events, and local ballot election advertisements.

Best Formats: Articles: Word or as an email message with no formatting. Photos: jpeg. Ads: jpeg or Word document.

Monthly advertising fees and relative sizes:

Full page	\$110	(7.5"w x 9.5"h)
Half page	\$60	(7.5"w x 4.5"h or 3.5"w x 9.5"h)
Quarter page	\$15	(7.5"w x 2.5" h; or, 3.5"wx 4.5"h)
Business card	\$10	(3.5"w x 2"h)
Classified ad	\$5	(15 words or less)

Payment due by the 20th of the month prior to publication.

1/18/25

Chryl Martin

~ Rich Biziak

Times of Shrewsbury, P. O. Box 373, Cuttingsville, VT 05738

Email: shrewsburytimes@gmail.com

Online: www.shrewsburyvt.org and <http://www.shrewsburyhistoricalsociety.com>

SHREWSBURY COMMUNITY CALENDAR

June 25	7pm	*Northam Cemetery Association Annual Meeting at the Northam Fire Station
June 27	6pm	*Mojo Birds concert at the Meeting House, 88 Lottery Road
June 28	2pm	*Sandglass Theatre presents PUNTSCI at the Russellville Schoolhouse
June 28	12 – 2pm	*Bowman Mansion Open House
July 6	1-3pm	*Shrewsbury Historical Society Museum opens
July 6	4pm	*Writer's Group meets at the Library
July 8	7 – 8:30pm	*Agricultural Lands and Meadows Discussion at the Town Office, 9823 Cold River Road
July 11	6pm	*Gaslight Tinkers concert; Meeting House; Food by Marble Valley Kitchen at 5:30pm
July 13	2pm	*Sister Una Lived A Good Death documentary at the Library
July 18	6pm	*Rod MacDonald concert; Meeting House; Food by Harry & Elena, Pierce's Store at 5:30pm
July 19	4:30 – 6pm	*Wine and Food Pairing at Pierce's Store (Reservation Required)
July 20	4pm	*Famous Book Club meets at the Library
July 24	12-2pm	*Prayer Shawl group meets upstairs in the Meeting House
July 25	6pm	*Trio of Aether concert at Meeting House; Food by Shrewsbury Community Church at 5:30pm
July 27	7pm	*Science Book Club meets at the Library
July 27	9am-1pm	*Blueberry Festival at Pierce's

*see elsewhere in newsletter for details

TIMES OF SHREWSBURY

Online at

www.shrewsburyhistoricalsociety.com
www.shsrewsburyvt.org



**Deadline for submission to
Times of Shrewsbury is by
 5:00pm
 on the 20th of each month.**

REGULAR MEETINGS and EVENTS

Selectboard Meeting	1 st & 3 rd Wednesdays – 6:30pm at Town Office
Bone Builders	Tuesdays & Thursdays--May-Oct: 9-10am; Nov-Apr: 10-11am at Meeting House
Development Review Board	4 th Wed -7pm at Town Office; check town website for agenda
Library Trustees Meeting	2 nd Tuesday – 7pm at Shrewsbury Library
Mill River Unified Union School Board Mtg	1 st Wed 7pm @ MRHS & 3 rd Wed. 7pm at MRHS unless otherwise warned
Planning Commission	2 nd & 4 th Tuesdays 7pm at Town Office
Prayer Shawl Group	4 th Tuesday at 12noon upstairs at the Meeting House
Religious Society of Friends (Quakers)	Sundays – 10am via Zoom; contact wildernessfriends@gmail.com
Shrewsbury Community Church	Sundays – 10:30am - Worship service
Shrewsbury Conservation Commission	1 st Tuesday @ 5:15pm at 450 Frank Lord Rd
Shrewsbury Historical Society	1 st Monday- 3pm at the Museum
Shrewsbury Historical Society Museum	Open 1-3pm Sundays only from July 6 to October 26, 2025
Shrewsbury Singers	Sundays 9-10:30am and Tues 6:30-8:00pm @ Meeting House
Shrewsbury Sno-Birds	2 nd Tuesday – 7pm at Southside Steakhouse in Rutland
Shrewsbury Volunteer Fire Department	Thursdays – 7pm at the Cuttingsville Station

Shrewsbury Town Website: www.shrewsburyvt.org

Clerk's Office	492-3511	Mondays & Thursdays 8:30am-1pm; Wednesdays 1pm-6pm (Fax 802-492-3383)
Town Garage	492-3656	(Follow prompts to report roadway blockage on non-work days)
Listers	492-2009	Available by appointment
Treasurer's Office	492-3558	Monday 9am-11am
Transfer Station	492-3867	Sunday 8am-4pm ~~ Wednesday 12noon–6pm
Library	492-3410	Hours: Mon 10am-12noon; Tues 7-9pm; Wed 10am-5pm & 7-9pm; Thurs 7-9pm; Fri 10 12noon; Sat 10am-12noon
Meeting House	492-6050	Reservations: 492-3361 or julanne@vermontel.net
News Flash Email:	vtbenbeano@gmail.com or benbeano@vermontel.net	an email list for Urgent and reminder news information
Cuttingsville Post Office	1-802-230-1996	<u>Window Hours:</u> Mon–Fri 7:30am–10:30am and 11:30am–2:30pm; Sat 8am–11am

Lobby Hours Mon– Fri 7:30am–5:00pm and Sat 7:30am–11am

Burn Permit: Forest Fire Warden Kevin Brown 802-345-8668 or, Deputy Fire Warden Al Ridlon, Jr. 802-282-3642

Animal Control Officer: Adrienne Raymond 802-492-3578

1st Constable: Aaron Haupt 558-9980

Game Warden: Tim Carey 793-2776

Emergency Management Aaron Korzun 492-3362

Green Mountain Power outage 1-800-451-2877

Medical-Police-Fire Emergency Dial 911

Ambulance 773-1700

Rutland Hospital 775-7111

[Updated 5/7/2025]

SHREWSBURY SELECTBOARD MINUTES

The Selectboard meets the 1st and 3rd Wednesday at 6:30pm at the Town Office.

May 21, 2025: Minutes of Selectboard Meeting

Present at meeting: Selectboard members: Aaron Korzun, Francis Wyatt. Town Clerk: Rebecca Rice. Delinquent Tax Collector: Steven Nicholson.

Members of the public: Greg Over. Bob Knudsen.
The meeting was convened at 6:32 PM

Agenda: Motion made by A. Korzun to follow the agenda with the additions of: Work in ROW permit for Button Hill Rd. F. Wyatt seconded. All in favor, motion approved.

Town Property – Lincoln Hill Rd.: Reviewed the draft quick claim deed for the Town property on Old Rte 103 on Greg Over's property. There may be a ROW given for access to the property formerly owned by McGinnis, currently owned by Edwards. The draft quick claim deed makes no mention of this possible ROW. Rebecca Rice couldn't find any mention of the McGinnis ROW in Town records. The Over's have been using the property for their driveway, but selling the property will increase the Town's grand list.

Aaron Korzun proposes the Town enter into a tentative agreement to sell the property for one dollar as described on the draft quick claim deed. F. Wyatt seconded. Approved.
This tentative agreement needs to be posted in 3 places and in the Times of Shrewsbury and then the public has 30 days to object by petition.

Appointments-Transportation Advisory Comm., Rutland Airport Comm.: Aaron Korzun made a motion to appoint Bob Knudsen to the Rutland Regional Planning Commission Transportation Advisory Committee and Bob Knudsen to the Rutland Airport Committee. F. Wyatt seconded. Approved.

Class 4 Roads Reclassifications: Postponed discussion due to Laura Black not able to make it.

Regional Future Land Use Map: The Shrewsbury Planning Commission has recommended accepting the two village centers currently indicated on the map. Aaron Korzun proposed accepting the RRPC Regional Future Land Use Map. F. Wyatt seconded. Approved.

2025 LEMP: Filled out the LEMP adoption forms.

Work in ROW Permit: A. Korzun made a motion to approve a curb cut on Button Hill Rd for Dirk Beardmore, following the Road Commissioner's comments. F. Wyatt seconded. Approved.

New Business/Open to the Public:

Auditors asked about the terms for the Contract Assessors. Confirming that the Town is paying for an Assessor, an Assistant Assessor and two Assessor Clerks. The two Assessor Clerks were formerly Listers.

F. Wyatt made a motion to borrow from the Reserve funds for other Town expenses when needed, with interest paid

back to the Reserve fund. A. Korzun seconded the motion. Approved.

Steven Nicholson asked about why there is a traffic counter on Shunpike Road by the fire station. The reason is that there is a traffic study for possibly reengineering the road.

Review Minutes: A. Korzun made a motion to accept the 5/7/2025 Selectboard meeting minutes. Seconded by F. Wyatt. Approved.

Review Orders: F. Wyatt made a motion to approve Selectboard Orders #5a for \$7,519.30 and Road Orders #5a for \$25,513.66. Seconded by A. Korzun. Approved.

Adjourned at 9:20 PM

Respectfully submitted, Francis Wyatt
These minutes are unofficial until approved by the
Selectboard at the next regularly scheduled meeting.

~~~~~

### June 4, 2025: Minutes of Selectboard Meeting

**Present at meeting:** Selectboard members: Aaron Korzun, Marc Cimonetti, Francis Wyatt. Town Clerk: Rebecca Rice. Interim Administrative Assistant and Planning Commissioner: Laura Black (remote). Delinquent Tax Collector: Steven Nicholson.

**Members of the public:** Mike Stewart. Louise Duda. Stan Duda. Pam Darrow.

The meeting was convened at 6:30 PM

**Agenda:** Motion made by A. Korzun to follow the agenda with the additions of: Sheriff's Dept contract; Shrewsbury response to reappraisal order PVR; VAST bridge. F. Wyatt seconded. All in favor, motion approved.

**VAST bridge:** The Shrewsbury Snobirds are facilitating replacing a bridge on VAST trail over Sargent Brook on Town property. They have the permits in place. Mike Stewart is asking the Selectboard to agree a landowner agreement detailing how the bridge ownership would be handled in the future. A. Korzun made a motion to accept the Landowner Agreement with the Shrewsbury Snobirds for a snowmobile bridge on the Clement Shelter Trail. F. Wyatt seconded. Approved.

**Liquor License – Pierces Store:** A. Korzun made a motion to approve a wine tasting license for Pierce's Store. M. Cimonetti seconded. Approved.

**Sheriff's Dept Contract:** Contract is for 8 hours a week, capped at \$23,811.84. A. Korzun made a motion to accept the contract. M. Cimonetti seconded. Approved.

**Shrewsbury response to reappraisal order PVR:** A. Korzun made a motion to recognize the reappraisal order from the PVR. F. Wyatt seconded. Approved.



## SHREWSBURY SELECTBOARD MINUTES

*The Selectboard meets the 1<sup>st</sup> and 3<sup>rd</sup> Wednesday at 6:30pm at the Town Office.*

**Spring Lake Ranch – Side Road Renaming:** Spring Lake Ranch would like the road running by the main house to be named Berryhill Lane. Approved.

**Appointments-Transportation Advisory Comm., Rutland Airport Comm.:** Aaron Korzun made a motion to appoint Dan Cavoto as an Alternate to the Rutland Regional Planning Commission Transportation Advisory Committee. F. Wyatt seconded. Approved.

**Town Property – Lincoln Hill Rd.:** Laura Black will run by the Town attorney the proposed quick claim deed. She will also find out from VLCT what is required for putting into a Town warning.

**Class 4 Roads Reclassifications:** Need to determine our next steps. We received some answers to our questions from our lawyer. We want to start with a road that we'd like to completely throw up.

**New Business/Open to the Public:** Louise Duda would like for the Selectboard to adopt a resolution similar to what the City of Rutland has adopted regarding affirming due process.

Louise Duda brought to our attention that there are new services regarding reducing flood hazards.

**Review Minutes:** A. Korzun made a motion to accept the 5/21/2025 Selectboard meeting minutes. Seconded by F. Wyatt. Approved.

**Review Orders:** F. Wyatt made a motion to approve Selectboard Orders #6 for \$11,276.38 and Road Orders #6 for \$5,701.32. Seconded by M. Cimonetti. Approved.

**Adjourned at 7:55 PM**

*Respectfully submitted, Francis Wyatt  
These minutes are unofficial until approved by the  
Selectboard at the next regularly scheduled meeting.*

### Minutes of Selectboard Meeting, June 18, 2025

**Present at meeting:** Selectboard members: Aaron Korzun, Marc Cimonetti, Francis Wyatt. Town Clerk: Rebecca Rice. Interim Administrative Assistant and Planning Commissioner: Laura Black (remote). Transfer Station Manager: Burt Potter. Development Review Board: Mark Youngstrom. Conservation Commission: Louise Duda. Zoning Administrator: Adrienne Raymond.

**Members of the public:** Rich Biziak.  
The meeting was convened at 6:30 PM

**Agenda:** Motion made by A. Korzun to follow the agenda with no additions. F. Wyatt seconded. All in favor, motion approved.

**Road Commissioner's Report:** Postponed.

**Transfer Station – Punch Cards:** Bert Potter requests that the Selectboard make it official to not have any money exchanged at the transfer station. Rich Biziak also stated that selling punch cards could also distract from other duties and could be a safety hazard. The Selectboard agrees that money should not be exchanged at the Transfer Station.

Punch cards will be available at Pierces Store and the Town Office only. (The Town Office is open during the Wednesday operating hours of the Transfer Station)

Aaron Korzun made a motion to go into Executive Session at 6:46 PM for a personnel matter. Came out of Executive Session at 6:51 PM.

**Class 4 Roads Reclassifications:** Discussed details of a particular property that the Selectboard is interested in giving up ROW on.

Discussed details regarding the sale of Town property to the Overs. Need to clarify that the quick claim deed description only include the portion of the Town property that is surrounded by the Over property. Should also get a sketch to help clarify this.

**New Business/Open to the Public:** GMP will be meeting with the Selectboard on July 2<sup>nd</sup> to discuss possible future powerline rerouting on Crown Point Road and Northam Road.

Adrienne Raymond is concerned about three dogs in Town.

**Review Minutes:** A. Korzun made a motion to accept the 6/4/2025 Selectboard meeting minutes. Seconded by M. Cimonetti. Approved.

**Review Orders:** F. Wyatt made a motion to approve Selectboard Orders #6a for \$14,217.40 (\$12,423.02 for County Court Tax) and Road Orders #6a for \$8,516.57. Seconded by M. Cimonetti. Approved.

**Adjourned at 7:55 PM**

*Respectfully submitted,, Francis Wyatt  
These minutes are unofficial until approved by the  
Selectboard at the next regularly scheduled meeting.*

COMMERCIAL/RESIDENTIAL      DRIVEWAYS

**C.N. WEBSTER**

EXCAVATING  
47 RAILROAD DRIVE  
N. CLARENDON, VT 05759  
(802) 558-3275

COMPLETE SITE WORK

SEPTIC SYSTEMS

## LETTER TO THE EDITORS

### A Heartfelt Thank you

The family of Lila Carrara extends our deepest gratitude to everyone who joined us in honoring and celebrating her life on June 7. Your presence and kindness made the day truly special, reminding us just how dearly Lila was loved.

The stories shared and the laughter heard were a testament to the profound impact Lila had on so many lives. Whether near or far, your support has been a source of comfort as we celebrate her legacy and keep her spirit alive in our hearts.

A special thank you to those who brought and shared desserts, especially the homemade treats lovingly prepared. Your thoughtfulness added an extra touch of generosity to the gathering, reflecting the kindness and compassion of our wonderful circle of family and friends.

~~~~~

Dear Shrewsberries,

This is a plea for common decency and honesty in your dealings with our Transfer Station. It is so plain to me in even my infrequent visits that many people ignore or are oblivious to the signs provided to let us know what goes where. Come on, people! It is not that complicated, and for anyone who has been using our system for any length of time, you should know where things go even without signage. What is more troubling is what I have heard of people who know better misusing the equipment, such as throwing a lawn chair in the cardboard/glass/plastic compactor which has issues often enough. When I was there recently, I saw a pile of lightbulbs including compact fluorescents in the trash compactor - those bulbs have mercury in them! This may have been done out of ignorance, but there is a protocol for disposal of compact fluorescents and various stores in Rutland will take them for free.

Perhaps it seems like too much trouble to separate things for recycling or you are cynical about what actually happens in the "recycling" world. Perhaps you just feel entitled to throw your garbage "away". I can understand the cynicism but let's try our best to work with the imperfect systems we have. You are only making our costs go up and recycling less likely when you mix materials up.

How about feeling grateful that we have places to dispose of our waste? How about not buying all the crap that will end up as difficult to return to the Earth without polluting it even more?

Please, please, please do not disrespect, by word or by action, our transfer station workers, Jeremiah and Margo. They are my neighbors and friends! They are doing their best at a job which is difficult and can be overwhelming when many folks are in and out at once, asking advice, asking favors, leaving items, taking items, etc! Jeremiah has lost several items that someone mistook for available. He cannot be everywhere at once and don't you dare take advantage of that. ~Sincerely, Pam Darrow

~~~~~

### Thinking about Installing a Residential Solar PV System?

After so much cloudy weather and rain, isn't everyone in Shrewsbury hoping for summer sun? Our family certainly is, having finally committed to install solar energy for our residential use. With legislation pending in Congress that will eliminate the 30% federal tax credit for solar energy, others in town may be thinking of doing the same thing before the credit expires.

For anyone who's interested, I'm happy to share our experience in deciding to go solar. This would not be to endorse a particular supplier, but to describe the process we went through to learn about the technical and financial factors and various options that need to be considered.

Elimination of federal support for renewable energy means that Americans will bear the increasingly severe economic and environmental consequences of climate change. But individually we can still make choices and take actions that protect both the planet and our pocketbooks. We're in this together and can assist one another. Give a call, 492-3665.

Jonathan Gibson

~~~~~



BURN PERMITS

If you are plan to burn brush you **MUST** call for a burning permit. **Contact Forest Fire Warden Kevin Brown 802-345-8668 or Deputy Forest Fire Warden Al Ridlon, Jr 802-282-3642.** The landowner is responsible to control a brush fire, ensure you have proper tools, water supply, and people to assist in containing the fire.

WIRENUTS ELECTRICAL LLC

bbates@vermontel.net

REBECCA BATES
LICENSED
ELECTRICIAN
802-492-3406
802-353-4376

**'AGRICULTURAL LANDS & MEADOWS'
FOCUS GROUP DISCUSSION
JULY 8, 7:00-8:30pm**

Shrewsbury Planning Commission invites interested townspeople and experts to provide input on Shrewsbury's agricultural lands and meadows to inform our Town Plan.

Participants will discuss the current conditions, potential vulnerabilities (including to pollinator habitat), recent changes, and current as well as future significance of agricultural lands and meadows in our town.

This event will be held in-person at the Shrewsbury Town Office. Remote/virtual attendance is available upon request. RSVP appreciated but not required. For RSVPs/Requests, contact the Planning Commission at shrewsburyvtpc@gmail.com

Watch for future Focus Group Discussion notices on Shrewsbury Planning Commission Meeting Agendas and on the town website in the 'Town News & Announcements' section of the home page.

~Submitted by Laura Black
Chair of Shrewsbury Planning Commission
~~~~~



**News from  
The Transfer Station**



In the **May 2020** issue of the Times of Shrewsbury a notice regarding punch cards was: *Punch cards will be temporarily available directly from Transfer attendants during the Covid-19 period. Punch Cards will be sold at the Transfer Station. Payment by check is preferred (payable to Town of Shrewsbury). No credit cards.*

In the **February 2025** issue of the Times of Shrewsbury in the Selectboard minutes: *Punch cards will no longer be sold at the Transfer Station. Punch cards will still be available at Pierce's and the Town Office.*

**HELP WANTED**

**SUBSTITUTE TRANSFER STATION ATTENDANT**

We're looking for someone that can fill in for the current transfer station attendants when they are unable to work due to vacation, sick days, or other circumstances. This position will perform the same duties as the current attendants: punching dump cards, operating equipment at the transfer station, keeping the transfer station clean and well organized, and answering questions.

Work Hours would be: Wednesdays, Noon – 6pm and Sundays, 8am - 4pm on an as needed basis.

Starting Pay is \$23.00/hour.

**If interested, please contact Bert Potter  
Transfer Station Administrator at 802-236-9153**

**BRANCH BROOK  
EXCAVATING LLC**

Driveways / Harley Raking / Ditches and Drains /  
Land Clearing and Reclaiming / Stump Removal /  
Retaining Walls; New and Old /Ponds/Power, Gas,  
and Water Line Burial/ General Dirt Work



Benjamin Turco

1269 Branch Brook rd

Mount Holly, VT 05758

Phone: (802)770-8964

[branchbrookexcavating@gmail.com](mailto:branchbrookexcavating@gmail.com)

**RIVERWOOD  
LAWNCARE, LLC**

FREE ESTIMATES

FULLY INSURED

**SPRING CLEAN-UP TIME!!!!!!**

**PLOW DAMAGE REPAIR/CLEANUP**

**REGRADE GRAVEL DRIVES/PARKING AREAS**

**POWER/HARLEY RAKE**

**STUMP GRINDING**

**DETHATCHING, MULCHING**

**MOWING, TRIMMING**

**POWER BROOM, LEAF CLEAN-UPS**

**BRUSH HOG/WET AREAS**

**802.770.0433**

[riverwoodlawncare@gmail.com](mailto:riverwoodlawncare@gmail.com)





## SHREWSBURY VOLUNTEER FIRE DEPARTMENT

The past month has been a busy one for your Shrewsbury Volunteers -- with six calls (so far) for assistance, and much more going on. Let's start at the beginning.

A successful fire department trains and plans for any emergency. Twelve miles of the Appalachian Trail (and Long Trail) run through Shrewsbury. The Trail is a footpath used by thousands of hikers each year, with its heaviest use coming during the summer season. Knowing that, Chief Phil Severy scheduled a refresher hiker rescue training session for May 22. This annual session leads to member speculation as to when the first call will come.

The answer this year was May 21 at 11:23pm. A college hiking club from Massachusetts started the day ascending the Trail from Governor Clement Shelter in Shrewsbury north to Killington Peak and back. One student got separated from the group on the way down the mountain. While he had no memory of this, it seems that the hiker fell on the slippery rocks, striking his head and injuring his leg. After the student eventually arrived back at the Shelter, limping and disorientated, the group leader wisely called 911. State dispatch called us.

Based on experience and training, SVFD was ready to respond to the call. The rough road to the Shelter is not suitable for fire trucks. Knowing this, Chief Phil took his personal ATV "side by side" and drove it to the site. Phil then used the ATV to transport the injured hiker from the Shelter to the Regional Ambulance Service rig which had been staged nearby. Happily, after being treated and evaluated at the RRMC emergency room, the student was able to return home with the rest of his group the following day.

A second injured hiker call came on May 26 -- Memorial Day -- from a steep, rocky, slippery section of the Trail south of Route 103. SVFD again was ready with an effective response. Incident commander (former Chief) Russ Carrara quickly requested assistance from the Rutland City Fire Department, which has professionals with rescue experience and equipment to move victims safely over terrain like this -- a specially equipped rescue ATV, a Stokes basket with attached wheel, and ropes to keep the stretcher secure during descent. Based on experience and training, the team and ambulance proceeded via Clarendon and Kingsley Bridge to the end of Knipes Road, where we know a wood road provides a short cut to the Trail. A rescue crew of SVFD, RAS and RCFD members (and Clarendon FD's Ralph Ford) brought the injured hiker down the steep trail to the ambulance, which then transported him to Rutland Regional Medical Center for treatment.

There is more to this story. The hiking community is a close knit one, with members in Shrewsbury and elsewhere. The injured hiker was from Utah, traversing the Appalachian Trail by himself. Learning of his plight -- a stranger in a strange land -- a generous local couple proceeded to the hospital to

help him. These "trail angels" took the hiker into their home for the night and then got him to Rutland Airport in the morning to fly back to his family in Utah. There are many in our community ready to help neighbors or strangers in distress when the unexpected happens. Thank you all.

Fire calls can come at any hour of the day or night. On May 29 at 5:12am SVFD was dispatched to a truck fire at a residence near the Shrewsbury-Mt. Holly line. The vehicle suffered extensive damage, but nearby structures were kept safe. On June 18 at 5:07am we responded to a structure fire on Route 103 by the railroad trestle, about two miles south of Cuttingsville. The small building involved has been abandoned for many years. The cause of the fire is under investigation.

Completing our report on calls received: On May 24 the Mt. Holly Fire Department requested SVFD to respond to a possible structure fire on Dawley Road; fortunately, our assistance at the scene was not needed. On June 19 we responded to a home fire alarm activation on Russellville Road. We were pleased to find this was a false alarm. No matter. When in doubt, call us out -- better safe than sorry. June means graduations. On June 4, SVFD members Ethan Severy and Dylan Thomas received their diplomas from Mill River Union High School. Congratulations to both! We are pleased when high school students join our ranks and also know that following graduation career decisions will take some of them elsewhere. For now at least, we are glad that both Ethan and Dylan are remaining in Shrewsbury as (young!) members of our Fire Department.

The Mountain School year ended with a celebration on June 9. Chief Phil again brought Northam Station's fire engine to the school for the occasion, squirting water to the delight of the students.

Last but certainly not least, we want to extend our sincere thanks to our Spring Lake Ranch neighbors. For several years, the Ranch has held a "Ramp It Up!" 5K race, promoting it as a fundraiser and donating the proceeds to a selected worthy organization. This year, that honor was bestowed on our own Shrewsbury Volunteer Fire Department. SVFD received a record-setting \$1,154.39 donation from the Ranch. Thank you! This will help us maintain our readiness to assist our community whenever an emergency arises.

Have a great summer, everyone. Be smart and stay safe!  
*Submitted for SVFD by Barry Griffith*

### THE SVFD NEEDS YOU!

We need new and younger members. The Shrewsbury Volunteer Fire Department (SVFD) can provide equipment, training, and support. Whether you've had prior experience as a first responder or have no experience at all! We need volunteers. Men or women who would like further information may call Bob Snarski at 492-3505, Barry Griffith at 492-3573, or Jack Perry at 773-3278. No commitment necessary.





## NEWS FROM LAUREL GLEN ASSOCIATION (LGA)

On June 1, Cathy Louttit, Patricia Lambert, Barry Griffith, Jeff Monder, Mark Stewart, and Stephanie Firstbrook took on the mansion, vacuums and dust rags in hand! It looks great. Things are being replaced with items from the time Mr. Bowman was at Laurel Hall. To that end, we seek donations: **ironing board** - late 1800s/early 1900s, **"baby gate"** - modern will do, and **ice box** - wooden, Victorian or early 1900s. It will not serve as a food cooler but will look nicer than the fridge we have (Be advised we may not be able to accept an item.). Email laurelglen.bowmanmansion@gmail.com

On June 4, 20 students from RHS visited Laurel Glen for a paranormal investigation as part of the end-of-semester YES Plan led by Clarena Renfrow. The group had great weather to explore the mansion and grounds. "One group got a very clear answer to their question, "Who is there?" Over the ghost box, it said, "John"! They were so excited!" said Ms. Renfrow. Thanks to volunteers Barry Griffith, Tom Giffin, Jeff and Dash Monder, and Ed Sawyer for their participation in the school visit.

**Did You Know?** No, you didn't! lol We now have a **website(!)** thanks to the hard work and generosity of Shrewsbury Sarah Greenspan! She has created a beautiful site that includes the history of the mansion and lovely photos taken by the Times' own Chryl Martin. The website IS live now! <https://www.bowmanmansion.org/>



(Since it is new, let us know if you see any things that need attention!) We'll celebrate its launch with an Open House on Saturday, June 28, from 12:00 - 2:00pm. The mansion, mausoleum, and conservatory will be open to the public, supported by our incredible volunteers.

We are always looking for more volunteers; we cannot move forward without the help of our community. Contact me with your interests!

Follow us on Facebook:

<https://www.facebook.com/share/g/1BYnNb3DXh/> and help by making a donation today at <https://gofund.me/f0d486d9>

*~Submitted by Freddie Monder*



18<sup>th</sup> century reenactors prepare a midday meal at Ethan Allen Homestead in Colchester. Pictured: Shrewsburies Linda Ducrot (L) and Freddie Monder (R), and Sue Strangia. *~Photo by Angie Grove*

## Are You a New Landowner in Shrewsbury?



If so, The Shrewsbury Conservation Commission has a Welcome Bag for you filled with books, flyers, and information on all kinds of topics having to do with the management of your land, programs available to you, and access to friendly advice if you'd like it. The SCC, in cooperation with Vermont Coverts: Woodlands for Wildlife and funded in part by a grant, would love to share this welcoming gift.

To receive a Welcome Bag, email [shrewsburyvtconservation@gmail.com](mailto:shrewsburyvtconservation@gmail.com)



## More Activities!

The May luncheon at Roots was a great success and we're looking for another popular outing June 26 at Taco Fresco in Rutland. If you are reading about this for the first time and are a member or volunteer and you want to come, please let me know. As I write this, there are still spaces left.

By the time you read this, we hope that the first in our 2025 walks – this one up on some of the trails in the Spring Lake area – has already happened. Given the weather this year, it's possible that we've been rained out. More will be scheduled.

In addition, we are in the process of scheduling wine & cheese socials in our three towns as well as a "thank you" gathering for our volunteers. We are also planning a get-to-know Green Mountain Neighbors event at the Shrewsbury Meetinghouse on September 7. This will be open to all. Details will follow.

Watch our events announcements and website calendar for more information about it. <https://greenmountainneighbors.org>. **How to:** Once on the homepage, click on the "Events" tab. Select "Events Calendar" (because it's easier to view) and look to see what's happening. As soon as events/activities are confirmed, they will be added to the calendar. I can tell you that generally luncheons will alternate between the 4<sup>th</sup> Wednesday and Thursday of the month, and wine & cheese gatherings will be the 2<sup>nd</sup> Tuesday and Friday of the months rotating among the three towns.

In the meantime, check out our new brochure located at the libraries, town offices, stores and other public locations in each of our towns: Mount Holly, Shrewsbury, and Wallingford.

Oh, and as always, GMN is here to help you do things you're unable to do on your own, such as climbing up a ladder to install a new smoke alarm, change out storms and screens, drive you to an appointment and other such things.

If you have questions, please call us at 802-417-2292. Leave a message and you'll get a call back within one day.

~Submitted by Sally Deinzer

## Free Medical Equipment

Remember, various pieces of medical assist equipment have been donated by Shrewsbury residents who no longer need them. These are available at no cost on a loaner basis. On hand right now are many wooden crutches, adjustable aluminum crutches, walkers, rollators, commodes, shower seats, bedpans, toilet safety bars, a large wheelchair, and more. If you need any equipment or have any items to donate, call Donna Swart at 773-7403.



**SMITH  
MAPLE  
CREST  
FARM**  
FARM.COM  
2450 Lincoln Hill  
Shrewsbury, VT  
802-492-2151

**Small Farm Flavor & Quality !**  
**VT Maple Syrup & Maple Treats**  
**Grassfed Beef & More**

|                  |                   |
|------------------|-------------------|
| - Sirloin Steaks | - Pork Sausages   |
| - Beef Roasts    | - Pork Chops      |
| - Short Ribs     | - Ground Pork     |
| - Ground Beef    | - Ham Steaks      |
| - Ribeyes        | - Chicken Breasts |
| - Briskets       | - Whole Chickens  |
| - Sausages       | - Local Eggs      |

**Fall in love with shopping local at our small Farm Store!!**





**Thrive Center**  
OF THE GREEN MOUNTAINS

*Serving the Community  
with Excellence and Compassion  
Since 2000*

Chiropractic Care • Applied Kinesiology  
 Therapeutic Massage/Bodywork  
 Holistic Health Education • Nutritional Supplements  
 Coaching • Worksite Wellness

**Joseph P. Donohue, DC    Lisa Marie Donohue, MA, LMT**

68 South Main St, Wallingford, VT • 802.446.2499 • [www.instagram.com/thrivecentervt](http://www.instagram.com/thrivecentervt)



*EXPLORE. DISCOVER. THRIVE.*

**Mill River**

*Unified Union School District*

**2025 Mill River Union High School Graduates**  
 Students from Shrewsbury receiving diplomas were:

**Jaden Harrington  
 Ethan Severy  
 Dylan Thomas**

**CONGRATULATIONS!**



## SHREWSBURY MEETING HOUSE CONCERT SERIES

July is a triple hitter for the Shrewsbury Meeting House Concert Series. We'll have 3 consecutive Fridays of concerts, because....well...because some opportunities are just too good to pass up! People frequently ask Paul and me: "Where do you find these musicians?" Our general answer is that we go to a LOT of live concerts and festivals, and when we hear bands that inspire us, that excite us with their proficiency on their instruments and with their vocals, we want to share them with our community. So if they're willing to come to Shrewsbury, we welcome them!

Please pay what you are able to with cash, check or Venmo contribution at the concerts. This is all about connecting with your community and having a good time with your neighbors. Bring a chair or blanket. For more info, call Vicky or Paul at 802-492-3649 or follow us on Facebook: Shrewsbury Meeting House Concert Series. ~submitted by Vicky Arthur

### GASLIGHT TINKERS

**Friday, JULY 11 at 6pm**



Last August we heard the Tinkers at the Hoot festival in the Catskills. Blown away by their creativity and upbeat musical attitude, it was love at first sight/sound for us. With ties to southern Vermont, they are our neighbors, so we are inviting them over for some Shrewsbury hospitality at our (Meeting) house!

African, Caribbean, Funk, Reggae, and Latin grooves meet traditional fiddle music. It's the genre-bending future of the music of the past. Their blend of global rhythms creates a joyously danceable sound around a core of traditional New England old time and celtic fiddle music, merging boundless energy with melody and song. Since its formation in 2012 the band has lit up the East and West Coasts, and the Caribbean, headlining clubs, dances, and major festivals. Playing what The Valley

Advocate describes as "Music that consistently fizzes and pops with unexpected textures and turns," The Gaslight Tinkers' shows are packed with delightful surprises, elated crowds, and exuberant musicianship.

**This evening's food will be provided by our own Harry and Elena from Pierce's Store.**

### ROD MACDONALD

**Friday, JULY 18 at 6pm**



One day Rod MacDonald knocked on our camper door while we were attending a festival in March in Florida. He was looking hard for a place to work on a song that he would perform that evening, and our picnic table seemed like the right spot. We made coffee, had snacks, beers and conversations about so many things. We made a great acquaintance.

Rod is a gifted singer-songwriter, creating songs of social commentary and humanity's shared experiences. The good kind of tunes that get stuck in your head. A key player in the 80's folk revival, Rod performed at Greenwich Village hotspots like the Speakeasy and The Bottom Line, and co-founded the Greenwich Village Folk Festival. His songs have been covered by, and he's appeared on stage, with a myriad of performers on a list that reads like the Who's Who of American folk music. In addition to being a prolific song spinner, and with a background in the Army, law school, as a journalist, educator and novelist, Rod sees the world through many lenses, and his sweet tenor voice, harmonica and guitar help to tell the stories.

**This evening's food will be provided by Marble Valley Kitchen.**

### BOW THAYER, KRISHNA GUTHRIE, STEVE FERRARIS: CHOIRS OF AETHER

**Friday, JULY 25 at 6pm**



While attending last summer's Artistree series in Pomfret, VT., we were witness to this fairly new musical project that explores the boundaries of traditional music and "things undiscovered". Choirs of Aether was born as a project that interpreted the sounds of Sun Ra and his Arkestra and then morphed into its own thing that is still evolving. Using Thayer's songs as a springboard for sonic exploration, the current and core lineup is composed of Bow Thayer (songwriter, multi-instrumentalist), Krishna Guthrie (multi-instrumentalist, great-grandson of Woody, grandson of Arlo) and Steve Ferraris (percussionist for Sun Ra, Mike Gordon, and many others). In the past, Aether's lineup has incorporated many other musicians with a strong

emphasis on improvisation and genre-bending arrangements. This lineup is no different in that respect. Each of these consummate musicians has contributed so much to our musical culture in Vermont, and now we all get to hear their newest creation together.

**This evening's food will be provided by the Shrewsbury Community Church.**



# SHREWSBURY LIBRARY

Library News Submitted by Joan Aleshire

## CELEBRATING 50 YEARS & COUNTING

Monday 10 am to 12 pm  
Tuesday 7 pm to 9 pm  
Wednesday 10 am to 5 pm & 7 pm to 9 pm  
Thursday 7 pm to 9 pm  
Friday 10 am to 12 pm  
Saturday 10 am to 12 pm

## COME SEE OUR 50th ANNIVERSARY QUILT & BUY A RAFFLE TICKET!

Wonder if the Library has a particular book or DVD? Want to put a hold on an item or renew one you've borrowed? Please visit [www.shrewsburylibrary.org](http://www.shrewsburylibrary.org).

To suggest a book to add to our collection, please contact DONNA SWARTZ ([donnaswartz44@aol.com](mailto:donnaswartz44@aol.com)) for Children's and Young Adult titles and JOAN ALESHIRE ([joanaleshire@vermontel.net](mailto:joanaleshire@vermontel.net)) for Adult Fiction and Non-Fiction.

We can request books on Inter-Library Loan, if the cut in federal funding allows. We will buy books depending on our budget and our collection's needs.

At the ANNUAL MEETING of the Board of Trustees in May, the following officers were re-elected: TRISH NORTON and LISA SHARROW as Co-Presidents; JOAN ALESHIRE as Vice-President; and GAIL HARTIGAN as Secretary. ELIJAH LACHANCE was re-appointed to the Library Board by the Shrewsbury Select Board. Many thanks to all for serving!

TRUSTEE OPENING: We're very pleased to announce that ED RAYMOND has joined the Board of Trustees! ED is a longtime Shrewsbury resident, Library volunteer and Library supporter. Thank you, ED, for stepping up!

THE PAUSE on BOOK DONATIONS continues as we search for ways to handle discarded books. We've had some good suggestions as we hope to continue our annual book sale. We'll keep you posted.

MANY THANKS to everyone who celebrated the Library's 50th anniversary on May 31! The library was packed with supporters, ranging in age from 92 to a few months. A lively panel discussion moderated by CABOT SPATZ recalled earlier iterations of the building, wonderful interactions, and gratitude for the town's support and the library's impact. SPECIAL THANKS to DONNA SWARTZ for her gorgeous trademark cake topped with a book made of icing!

## COMING EVENTS:

Saturday, June 28 @ 2pm: SANDGLASS THEATER presents *PUNSCHI* at the Russellville Schoolhouse. Free will donation. See our ad in this issue.

Sunday, July 13 @ 2 pm: *Sister Una Lived a Good Death*: Director Par Parekh will show his documentary about an irrepressible nun with a terminal diagnosis. See our ad elsewhere in this issue!

## CONTINUING PROGRAMS:

Sunday, July 6 @ 4pm: WRITERS' GROUP: If you have poems or short pieces of prose to share with our friendly group, please contact Penelope Weiss ([pw9@earthlink.com](mailto:pw9@earthlink.com)) or Joan Aleshire ([joanaleshire@vermontel.net](mailto:joanaleshire@vermontel.net)) for info!

Sunday, July 20 @ 4pm: FAMOUS BOOKS BOOK CLUB: Our next book is *The Bluest Eye*, the first novel by Nobel-prize-winning Toni Morrison, once a staple of high school curriculums, but currently one of the most frequently banned books in the country. Copies will be available at the Library. Please contact Joan if you want a copy: [joanaleshire@vermontel.net](mailto:joanaleshire@vermontel.net).

Sunday, July 27 @ 7pm: SCIENCE BOOK CLUB: *Best Science and Nature Writing 2024*, edited by Bill McKibben. Print and e-books are available. Please contact Margery Salmon ([salmonm@vermontel.net](mailto:salmonm@vermontel.net)) if you'd like a copy.

## New Books include:

- *Be Prepared: A Practical Handbook for New Dads* by Gary Greenberg: Funny and yes, practical, advice;
- *Death at the White Hart* by Chris Chibnail: The first mystery novel from the creator of the BBC series *Broadchurch*: An old-fashioned treat;
- *How To Be Well: Navigating Our Self-Care Epidemic, One Dubious Cure at a Time* by Amy Larocca: An arguable dose of common sense;
- *The Trouble with Heroes*: A Young Adult novel of loss and resilience set in the Adirondacks, by Kate Messner;
- *The Ministry for the Future* by Kim Stanley Robinson: A visionary science fiction novel about turning the tide of climate change. Recommended by Will Patten, author of *Rescuing Capitalism*.
- *Abundance* by Ezra Klein and Derek Thompson: An urgent argument for a politics of plenty. Another Will Patten recommendation.

## New DVDs include:

- *Anora*, directed by Sean Baker and starring Mikey Madison: Academy Award for Best Picture 2025.

## Bone Builders



Tuesdays and Thursdays  
November-April: 10-11am  
May-October: 9-10am

at the Meeting House on Lottery Road

Free weights and instruction!

Join this friendly group to improve your  
Bones, Balance, and Strength

More Info: Ginny Buckley (802) 492-3504



### BOOK REVIEWS

\*\*\*\*\**Fantastic*  
 \*\*\*\*\**Compelling page turner*  
 \*\*\**Enjoyable*  
 \*\**Just O.K.*  
 \**Not recommended*

Please share your book reviews. Send them to Marilyn Dalick [maplesugar@comcast.net](mailto:maplesugar@comcast.net) for her to compile and submit to the *Times*.

### **The Double Bind** by Chris Bohjalian

★★★★★

This popular author always includes places we know well in his books, sometimes a treat and sometimes a shock. His tales are written well, and this book is no exception. He does use a heavy hand, however, in convincing us of his improbable claim that a homeless, mentally ill man is actually the son of Jay Gatsby and Daisy Buchanan. Laurel Estabrook, a young social worker, uses Bobbie Crocker's sole precious possession, a portfolio of black and white photographs and unprinted negatives to further our trust in the claim. Laurel is a rape survivor, and Bobbie Crocker is again linked as father to one of the degenerates who is involved in her attack while she is riding her bike in a forested path in Underhill, Vermont. Really?

And Bobbie has a photograph in his precious portfolio of Laurel on her bike before the attack. He was there? Anyway, the ending really dismayed me, and I felt betrayed. I give this book, which indeed held my somewhat dubious interest, four stars. ~Reviewed by Marilyn Dalick

### *Wild Dark Shore* by Charlotte McConaghy

★★★★★

I have written in the past about the pleasure I get from reading books about different locations and eras. I was given a few books for Mother's Day, one that transported me to an incredibly rugged location and another that continued my fascination with learning about life during World War 2.

The first, *Wild Dark Shore*, a novel by Charlotte McConaghy, is set on the fictional island of Shearwater near Antarctica. The book is part science, part mystery, part romance, and wholly engrossing. I think that I finished reading it in four or days because I had to take time to work in the garden.

The main character, Rowan, washes up on the shore of Shearwater during a fierce storm. One of the children of the remaining family on the island sees and rescues Rowan to nurse her back to health. Mistrust and mystery surround the family as well as Rowan. Why was she alone in a Zodiak in that part of the world? What explains the quirks of each family member?

I highly recommend *Wild Dark Shore* and give it 5 stars. ~Review by Sally Deinzer

### **The Midnight News** by Jo Baker

★★★★★

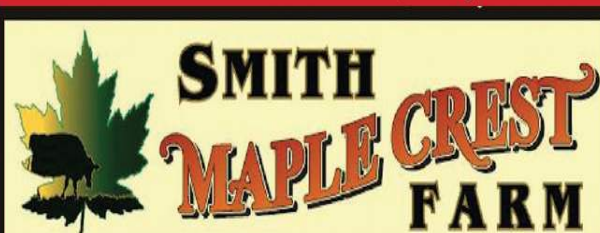
The second book, *The Midnight News*, a novel by Jo Baker, takes place during the Blitz (1940-1941), when Nazi planes undertook an intense bombing campaign of British cities. Baker makes day-to-day life in London very real as her main character, Charlotte Richmond, navigates her young life as a typist for the Ministry of Information. Friendships are intense and fraught because of the uncertainties tonight or tomorrow will bring.

This book, too, has mystery, mistrust and romance, as well as the high quality of the "you are there" writing. I was transported to Charlotte's attic room watching the night sky for bombers, wondering if I would see the morning. And asking the same question after going with her into the basement during a raid. I was in a hospital but wondering why and how I could safely get out. I was running in the streets at night sure that I was being followed and not knowing why. Who could I trust to help me?

Another 5 stars go to *The Midnight News*.

I am giving both books to the Shrewsbury Library. ~Review by Sally Deinzer

### **Small Farm Flavor & Quality!**



### **VT MAPLE SYRUP & GRASSFED BEEF**

|                  |                 |                 |
|------------------|-----------------|-----------------|
| Maple Candies    | Locally Sourced | Grilling Steaks |
| Maple Cookies    | Pork (cuts)     | Ribs, Roasts,   |
| Maple Spices,    | Chicken (cuts)  | Briskets        |
| Marinades        | & Eggs          | Sausages        |
| Sugar and Snacks | Ground Beef     | & More          |

Gift bags of Vermont Goodies and Meat Freezer Boxes Available  
 OPEN: WED THRU MON 10 AM - 5 PM

2450 Lincoln Hill Road, Shrewsbury, VT 05738  
[smithmaplecrestfarm.com](http://smithmaplecrestfarm.com) • 802-492-2151 • [maplecrest.info@gmail.com](mailto:maplecrest.info@gmail.com)  
 WE SHIP SYRUP ALL OVER THE USA

# Shrewsbury Historical Society

www.shrewsburyhistoricalsociety.com

## Shrewsbury Historical Society Museum

The Museum opens its doors on Sunday, July 6, 2025, from 1-3pm. It will be open each Sunday 1-3pm until October 26, 2025.

## Mountain School graduates

Congratulations to 6th graders as they will be going to Mill River in the Fall. Our gift to each of the following ten students are their own copy of the town's history book *Shrewsbury VT, Our Town As It Was*, by Dawn D. Hance. Jack Allard, Emmett Barker, Hadley Cote, Makayla Hutt Vater, Ellie McDevitt, Benna McGown, Jaxson Phillips, Conrad Sanderson, Oliver Smith, and Sigrid Wellenius.

## WANTED

The SHS needs someone who will volunteer their time to take minutes of monthly meetings 3 pm at museum, Call 802 - 492-3324 for more info. Thank you.

## SAVE THE DATE SHREWSBURY CENTER CEMETERY CLEANUP DAY

October 4, 2025  
8am – 12pm  
Further details as the date gets closer

## My Farewell to Shrewsbury

Goodbye, sweet Shrewsbury, wrapped in green,  
Where the Cold River hums low and skies are clean,  
Where maples blaze in autumn's fire,  
And silence sings like a choir.

The mountains hold their breath for me,  
As I slip down the path to memory.  
Each tree lined road, each weathered barn,  
Becomes a tender farewell charm.

The mist still clings to morning light,  
As though the hills won't lose me quite.  
But hearts must roam, and time moves on-  
Though part of me will not be gone.

So, here's to you, my mountain nest,  
A place I knew, a place I'll bless.  
No matter where I choose to roam,  
A piece of Shrewsbury is home.

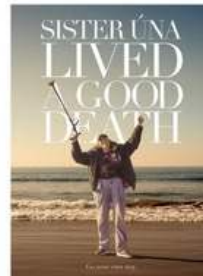
By Rob Jaimes

The Shrewsbury Library presents:

## SISTER UNA Documentary

Directed by: Par Parekh

July 13th at 2 p.m.



### Q & A with Director Par Parekh

Following a terminal cancer diagnosis Sister Una- a smoking drinking wisecracking Catholic nun dedicated to social justice-chooses to live as she's dying. In *Sister Una Lived A Good Death*, we follow the self proclaimed "leader of the misfits" in her last nine months as she plans her funeral, attempts to complete her bucket list, and confronts what it means to let go.

Meet Sister Una Feeney. She smokes Camel Lights and drinks Irish whisky. She loves Harold and Maude. She calls herself "the leader of the misfits" And she's a Catholic nun.

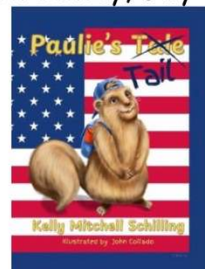


56 Town Hall Rd  
Cottingsville, VT 05735  
shrewsburylibrary.org  
802-492-3410

## Meet the Authors

Join us at Pierce's

On Sunday, July 20



Meet the children's author Kelly Mitchell Schilling, the illustrator John Collado and the adventurous marmot Paulie!

&



Meet the author of the young adult novels in the Torn Robes series, K.M. Quinn

Contact Pierce's (802-492-3326) for more information!



## The Shrewsbury Community Church



*Compiled by Sue Ransom-Kelley*



What happens in July you say? We move our Sunday Services for July and August to Northam! It's hard to believe it's time to move to our summer church again. The Northam Church is that historic white church on the Cold River Road, next to the town office, and just around the corner from Pierce's Store. This well-kept gem is much the same as it has been in the 19th and 20<sup>th</sup> centuries. Come and visit, see the oil lamps, and listen to the Etsy Pump Organ. Services are on Sundays at 10:30am.

~~~~~

Graduation Time:: A Look Back

I attended the Rutland High School graduation ceremony for the graduates who were celebrating their 50th reunion. "First off, a class picture. Very different from 50 years ago. We went on school buses (still no seat belts) to the graduation. The graduates were honored individually which was very nice. Where are we now, compared to when we graduated in high school? Have we fulfilled our dreams? Back then did we even know what our dreams were for the future?

We are the culmination of our past, we're not in the future yet and called to live fully in the present. What has been the guiding thread through our lives? What has our God called us to be and to do? Our call never ends. It just changes over time. Just because we retire, we aren't done. Our vocation is just one aspect of ourselves. We are called to live a life of love and service in every area of our lives. We are called to be the face of love--to others, to ourselves, to our loved ones, to our enemies, to God. We are called to show up compassionately, lovingly, forgiving as we go. Doctors are called to do no harm. We are called to do good. To help. To serve.

The reality is that we have been influenced by people in ways that we might never know. We have been influenced by people and were not aware of it until it was too late to thank them. We have been influenced by models of what to do and what not to do. We are never sure of the impact that we may have on others. So let us err on the side of love. Wouldn't we want to be given the benefit of the doubt?

Let's just tread lightly as we walk with others through their experiences of life.

~Pastor Karen Braeutigam



Special Thanks to all who worked to assemble kits for Church World Service Disaster Response! We were extremely pleased to complete 36 kits! That beat our record of 30 kits for last year!

Shrewsbury Community Church Calendar

- Sunday July 6 10:30 Worship Service and Service of Communion led by Pastor Karen Braeutigam.
- Sunday July 13, 10:30 Worship Service led by Pastor Karen Braeutigam.
- Sunday July 20, 10:30 Worship Service led by Pastor Karen Braeutigam.
- Tuesday July 22, 12noon-2:00pm: Prayer Shawl Group Meeting Upstairs at Meeting House. Come and knit or crochet! Refreshments will be served. Don't know how? Come and we will teach you! Call Roxanne with questions 802-492-3675.
- Sunday July 27, 10:30: Worship Service led by Pastor Karen Braeutigam.

Community Food Shelf

Free Community Food Shelf at the Library in the front entry way. Those in need are welcome to help themselves any time the Library entryway is open. Limited hours are:

Mon 10am-12noon; Tues 7-9pm; Wed 10am-5pm and 7-9pm; Thurs 7-9pm; Fri 10am-12noon; and, Sat 10am-12noon.

Food Delivery and Assistance If you are unable to get to the Food Shelf at the library in Shrewsbury, we will deliver groceries to you. If you need items which are not available on the shelf we can provide grocery gift cards. Call Karen at 802-558-5991 or Sue at 802-779-4360 or 802-492-3738.

Community Needs

- Wedding, Funeral or Memorial Service Requests: Contact Donna Smith 802-492-3367; or Sue Kelley 802-492-3738, 802-779-4360
- Community Helping Hand Requests: Contact Donna Smith 802-492-3367; Sue Kelley 802-779-4360, 802-492-3738; or Karen Lorentz 802-558-5991. Shrewsbury residents experiencing financial hardship. Assistance can be given for basic needs (food, heating, gasoline, etc). If you or a neighbor are in need, please let us know!
- Pastoral Care, Home, Hospital Visitation, Outreach Requests: Contact Roxanne Ramah 802-492-3675 or Ruth Kinne 802- 775-5318.



Spring Lake Ranch therapeutic community

Capital Campaign Gets Cooking at Spring Lake Ranch

Exciting news: we have completed construction on our new kitchen and have moved in, thanks to early donors to the Capital Campaign! Our kitchen staff loves the expanded workspace and new appliances. The whole Ranch continues to enjoy the best meals around, even during the tricky transition into the new space.



Here's what the kitchen staff have to say about their favorite aspects of the new space:

"How clean and open it is." —Noah

"Having my own space to cook is the best thing! All the up-to-date equipment and additional storage space in the walk-in will really help with kitchen production." —Alan

"I think it is very helpful that the kitchen has four large preparation tables as this gives the kitchen crew more space to cut Ranch garden-fresh food!" —Resident who works in the kitchen

"My favorite things about the new kitchen are the ample space combined with bright lighting so we can see what we're doing. And my favorite piece of equipment is the steamer, which is an invaluable tool, offering a healthier cooking method that preserves nutrients and flavors from our garden." —Cathy



And that's not the only exciting construction update. Our People's Kitchen and Transitional Living Program should be finished by the end of the summer! With a year and a half left in the Campaign, you may be wondering what's left to do. The answer is plenty! We are still raising money for two new barns and the consolidation of our Farm Program buildings, renovation of the existing gym with the addition of a yoga room and music studio, and sustainability upgrades. You can learn more about the individual projects at www.springlakeranch.org/capitalcampaign or call Rose McCracken at 802-772-8342. ~Submitted by Anna Sutton

~~~~~

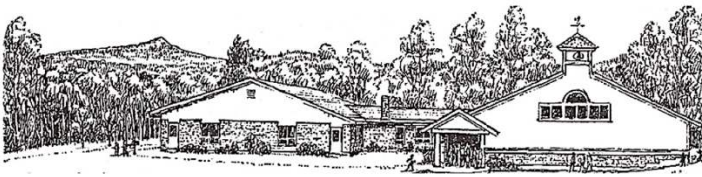
## Quilt Exhibit Opens

The Middletown Springs Historical Society kicks off the Summer 2025 season with an exhibit of its heirloom quilt collection, "Patterns and Provenance: Quilts of Middletown Springs, 1840-1920." The exhibit features 20 quilts, representing 15 different historic patterns, that have been passed down through six Middletown Springs families. The exhibit is open in the ground level exhibit room on Sundays, 2 – 4pm, through October 12, and by appointment through December 21, 2025. Visit [mshsvt.org](http://mshsvt.org) for travel directions and more photos of the exhibit.

~~~~~



Mill River 3rd-6th Graders Softball
Pictured are Hannah P. and Kayla C.
Shrewsbury Mountain School
~Submitted by Catherine Carrara



SHREWSBURY MOUNTAIN SCHOOL

Happy SUMMER!!!

We have so much to be grateful for this school year. Our students have had AMAZING learning experiences inside and outside the classroom. We have met our school progress goal, continued to implement four district wide curriculums for ELA, Math, Science and Social Studies, and our dedicated teachers have provided the highest quality instruction for our students. Our students have grown in their learning and demonstrated strong improvement toward their educational goals. It has been an outstanding year of learning and growing for everyone!

MRUUSD peers in preparation for their transition to Mill River Union High School. We had a beautiful all school music concert and 6th grade graduation celebration!

Huge Congratulations to our 6th grade graduates: Jack Allard, Emmitt Barker, Hadley Cote, Makayla Hutt Vater, Ellie McDevitt, Benna McGown, Jaxson Phillips, Conrad Sanderson, Oliver Smith, Sigrid Wellenius

Playground NEWS! Our playground equipment that needs replacement was removed by Jamie Carrara of James Carrara Excavating and Marc Cimonetti of Vermont Timber and Tile. We are grateful that they donated their time and equipment for this part of the process and the new playground equipment has been installed. The playground needs wood chips in order to be used safely and we will be completing that last step of the process by mid-July and then our school and community families can come and play and enjoy! We are grateful to our donors for trucking the wood chips to the school and for Nick Greene of Dig Pro Excavating

for helping us spread them on our playground. We will celebrate this amazing renovation with a special gathering on Saturday, August 23 from 12-2pm (Rain Date August 24). Huge thank you to all of our donors and our dedicated SMS PTO Playground Committee. We never could have done it without your dedication and generosity!

If you would like to volunteer to help with tending our school garden, please come at 9:30am on Wednesdays and join Ms. Julia Bonafine, our Sustainability Teacher Leader, to ensure a beautiful harvest

this Fall! We are looking forward to many opportunities to learn about the orchard, the garden and sustainability this coming school year.

Here are some highlights from this school year!

Our PreK students had their "Donuts with Grown Ups" Celebration with their families. Our Grade K/1 students took a field trip to VINS! Our Grade 2 students honored veterans by placing flags in Northam Cemetery and took a field trip to Hildene. Our Grade 3 and 4 students have tended our orchard. They have been taking such good care of our trees and helping to educate their classmates on how to tend and care for them. They also took a field trip to Fort Ticonderoga. Our Grade 5 and 6 students raised and released trout in the stream behind Pierce's Store. They also took a field trip to Lake St. Catherine to learn about invasive species as well as took a trip to the State House. Our Grade 6 students had many opportunities to build new friendships with other

I am so proud of all that our school has accomplished! It is an honor to work with our talented and dedicated educator team. I want to extend a special thank you to our SMS PTO organization, our Four Winds volunteers, our Field Day volunteers, our local heroes from the Shrewsbury Volunteer Fire Department, the SAGE Foundation, Evening Song Farm and the OKEMO Winter Sports program. I hope everyone has a beautiful summer and I look forward to next school year! ,

~Kristin Cimonetti, Principal. 802-786-3995
kcimonetti@millriverschools.org





Shrewsbury Conservation Commission

Trail Camera Picture of the month



This month my cameras have captured several small fawns. They follow mother doe closely, but every so often frolic about!



Bears are rubbing and scratching on utility poles in the same areas as last year. It's a comical performance to capture on video.



My first request! So, for Lee, here is a picture of a fisher leaving scent on top of a mossy stump. The fisher's tail is almost as long as its body!

If you have a picture of a track or wildlife capture to share, please contact: Linda Shelvey at lpurdyshe1@gmail.com.

Greetings Shrewsberries!

We are a family of three looking for a permanent home here! Stephen works with local non-profits (including SAGE) and represents Shrewsbury on the Mill River District School Board. Oana is a health care provider in Rutland. Our little one is excited to attend SMS in a few short years...

We would love to create our home in Shrewsbury either by purchasing a house or a piece of land. We envision a 2 or 3 bedroom home on 5+ acres, eventually with animals and fruit and nut trees! If you know about places that may be coming on the market or land that could be subdivided out, we'd love to talk with you. Please reach out to

802-492-3106 or

stephen.abatiell@gmail.com.

~Stephen, Oana, and S



Your one stop shop
for all things local
and handmade:

- MAPLE SYRUP
- CRAFT FOOD
- CIDER & BEER
- ANTIQUES
- & MORE!

Open Wed-Sun: 11am-6pm (802) 772-0507

The Olde Barn, 5444 VT 103 Hello@wallyscorner.com
Cuttingsville, VT 05738 www.wallyscorner.com

Upcoming Events & Announcements

June 29th 10a-11a: Pressed Flower Jars

🌿 Our host, Lauren Escott, is a master of crafts! ✂️
Join us as she walks us through creating beautiful mini Pressed Flower Jars for the perfect countertop accent.

4th of July: Red, White & "You" Sale

🇺🇸 We're celebrating with a week of surprise perks!
Pick a slip at checkout to reveal a free gift or up to 20% off your purchase—every draw wins! 🎁🌟 7/2-7/6

July 20th 5pm-7pm: Free Beer & Cider Tasting

🍷 Come down to the shop to experience delicious, local craft drinks. Food pairings included.

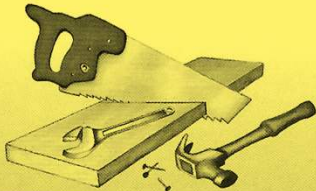
D. F. LEIN HANDYMAN SERVICE

Rutland VT

Dale F. Lein

704-728-7442

dflein@yahoo.com



Fully Insured
Home Repairs
Woodworking Projects



DEPARTMENT FOR CHILDREN & FAMILIES
FAMILY SERVICES DIVISION

Support Foster Care in Vermont

Open Your heart...Open your home. Across Vermont, nearly 1,000 young people are being cared for by foster parents. Some live with kin, others with families and individual caregivers who are unrelated to them. All children and youth in foster care have experienced trauma. Providing the stability that supports their well-being is our obligation and hope for every child in care.

You can become a licensed foster care provider for a short time while a child's parents are working on things, or perhaps your family is interested in embracing a child who is not able to return home. There are many options to explore. Even if foster care isn't right for you at this time, being a friend, mentor, community resource, or respite care provider can also be a significant support to a child in foster care and to their families.

Consider supporting children in your local community through foster care. Is foster care right for you? If so, we would love to hear from you! Contact your DCF | Family Services Division Office. Here's how: Contact the Department For Children and Families at:

<https://dcf.vermont.gov/foster-care-inquiry>

Mount Holly, VT

Joshua Bickford

802.855.3216

joshfbickford@gmail.com



TREE WORKS

Fully Insured • Tree Removal • Pruning

TRACTOR WORK

For all your loading, lifting,
digging, grading, grappling,
winching & brushhogging needs.



Rob Littmann
802-774-8835
Shrewsbury, VT

Front Loader: Bucket, Grapple,
Pallet Forks, Bale Spear

Backhoe: 16" Bucket & Thumb

Brush Hog, Forestry Winch,
Grading Blade, York Rake,
Pallet Forks, Bale Spear



Discover horses
from the ground up!

Jennifer McDermott

Balanced Seat for all Disciplines

Centered Riding, Instructor

Therapeutic Riding

PATH, Int'l, CTRI & ESMHL

&

Experience the deep connection
of working at liberty!

Over 35 years of experience.

203 434 9505

jamequine.com

REINBOW RIDING CENTER NEWS

Reinbow Riding Center Welcomes New Leadership

Reinbow Riding Center (RRC), a therapeutic horsemanship center based in Rutland County, begins their 17th season with a new leadership team. Elected as new co-presidents are



Samantha Pearce and Rebecca "Becca" Rice. Jennifer Wigmore will also now serve as vice president of the RRC Board. They replace retiring board President Lynn McDermott and Vice-President Dorothy "Dardy" Pour, both of whom provided dedicated and valuable service to the organization.

Lynn, a Shrewsbury resident, was a founding director of RRC and has served for many years as its president. She oversaw the organization's growth and move from its original Shrewsbury location to its present location in Belmont. Her tremendous leadership and stewardship of the organization throughout the years has continued to propel RRC forward. Lynn recently stepped down from the board but will continue to serve as Immediate Past President during the transition.

Dardy has been an instrumental member of the board and is a retired Special Educator from the Rutland School System.

Becca is an attorney and Shrewsbury resident where she is the Shrewsbury Town Clerk. She is a longtime horsewoman and has served on the RRC board for seven years. Becca will now share the reins as the Reinbow Riding Center's new co-president.

Sam currently works at The Collaborative, an organization focused on youth substance abuse prevention. She is also an avid horsewoman. Sam will also now serve as the organization's new co-president. ~Diane Stockton-Breese

Making Hay when the Sun Shines – Not Easy this year!

Thanks to the Reinbow Riding Center Hay Crew, 103 bales of beautiful first cut hay from the Eddie Fox Farm in Pittsford is now stored for future use in the barn at Stonewall Farm. Our horses will be eating well when fall arrives and the grass turns brown. Thanks to Eddie Fox and his family who have been supplying us with hay for many years and our hay crew (RRC volunteers and friends) who showed up on short notice to help with the heavy lifting.

At Reinbow we're busy working with the horses getting ready to start our first 6-week session of summer lessons July 8. Our second session will start the beginning of September.

At Reinbow Riding we strive to meet the needs of every individual that participates in our programs, mounted or unmounted regardless of their ability to pay. For more information about Reinbow Riding Center and our mission please visit our website: reinbowridingcenter.org and follow us on Facebook or Instagram @reinbow_riding_center and LinkedIn! Contact us at programs@reinbowridingcenter.org or 802-236-2483 to inquire about our programs and lessons. For information about opportunities to volunteer with us contact janetupton@reinbowridingcenter.org. ~Janet Upton

Keeping Cool in the Animal Kingdom

Have you ever wondered how your cat stays cool? Here you are, mopping your brow as you finish vacuuming, and there's Winnie flopped in a sunbeam, her belly invitingly exposed. (Don't fall for her tricks. If you pet the tummy, expect the claws!) Both horses & humans have evolved to cool down by relying on sweating and evaporative cooling, since as long-distance athletes they are challenged to maintain a normal body temperature despite prolonged activity. But cats are stealthy ambush hunters: They lie in wait, tracking movement with their eyes and ears, and when they calculate the moment is right, they pounce! Felines of all sizes have evolved for short bursts of high-energy activity and the luxury of a long recovery period as they smugly inspect their kill. Cats expend excess heat mainly by exposing their copious belly skin (called a primordial paunch). They can sweat small amounts from their pawpads and between their toes, and self-grooming will provide some evaporative cooling. But if cats are exceptionally hot, they will pant for short periods—often an alarming expression to experience in real life!

~Article by Roberta Lea Hemmer
(Roberta graduated from Shrewsbury Mountain School, and Mill River High School before obtaining her Doctor of Veterinary Medicine from Cummings School of Veterinary Medicine at Tufts University in 2018.)

Magpie and the Gray Fox!

On a recent dog walk thru our meadow Magpie found a golf ball. It hadn't been there the day before. It was a Wilson. It was in good shape. A call to our neighbors confirmed that



Todd had been practicing his swing and could possibly be missing a golf ball.

The next day Magpie and I walked thru fresh snow to revisit the spot. The ball was gone! Fresh gray fox tracks solved the mystery of the golf ball's appearance and disappearance!



After a bit of internet research, I learned that foxes are attracted to shiny objects, dog toys and golf balls, especially during denning. It makes me happy to think of fox kits playing with the golf ball. I will refer to the fox family as the Wilsons in the future! ~Article by Linda Shelvey



We welcome tennis players to use and enjoy our tennis court this summer. The court is just west of the home at 7983 Cold River Road. Extra racquets and balls are in the red shed adjacent to the court. Come anytime—no need to call!! ~Taffy Maynard 773-2087



444 Tin Shanty Road, Shrewsbury, VT

Private Country Estate on 124 Acres

BEDROOMS/BATHROOMS

7/6

LIVING AREA

6,415 Sq. Ft.

ACREAGE

124+/-

PRICE

\$1,999,000



Gail Beardmore
Gail.Beardmore@EVrealestate.com



126 Main Street, Ludlow, VT 05149 +1 802-975-0338
okemo.evrealestate.com



Mendi Michael
Mendi.Michael@EVrealestate.com

©2025 Engel & Völkers. All rights reserved. Each brokerage independently owned and operated. Engel & Völkers and its independent License Partners are Equal Opportunity Employers and fully support the principles of the Fair Housing Act.



Each class at the Mountain School had the opportunity to prep and plant the school garden during the last few weeks of the school year. Aside from 2 beds that will be planted later in the summer, the garden is fully planted, including a pollinator row along the front fence! Julia, Scott, Mr. Dave, and Stephen will tend to the weeding, watering, and mowing throughout the summer to ensure an abundant autumn return for the students of the Mountain School.

This year the Rose Chafer beetles seem to be far behind their typical June infestation of the orchard, or perhaps our efforts of tamping them down is paying off! These beetles emerge from the soil as adults in June and feed for a few weeks on foliage before laying eggs in the soil and dying. Larvae will feed on the roots of grasses and weeds and drop below the frost line to overwinter and emerge as adults the following June. Last year, there were over 500 beetles swamping our little orchard in mid-June, and so far this year their numbers have been quite low. We will keep an eye on the orchard and apply Surround, a crop protectant that is 95% kaolin clay and creates a barrier to insects as well as harsh sun rays.

Mark your calendar for a very special art workshop we have planned in the Russellville Schoolhouse on July 27 from 1-3pm. Benjamin Aleshire, will be leading a program on anothotype printing. Anthotypes (Greek for flower-printing) were first formalized in 1839 by Sir John Herschel and Mary Somerville, who discovered that the natural ultraviolet sensitivity of certain plants could yield striking images when exposed to the sun for periods of time. In this hands-on 2-hour workshop, you will learn everything needed to begin harvesting your own botanical photographs, using 100% natural materials: beetroot juice, turmeric powder, and blackberries.

Benjamin Aleshire is a photographer and writer living in Shrewsbury, VT. His photographs have been exhibited most recently at the Generator in Burlington, where he was the artist-in-residence in 2022—as well as the BCA Center, the Burlington Airport, and the United Bakery Gallery in New Orleans. Currently he is building a photography cooperative in the Granary Artspace in Brandon, VT.

SAGE, Shrewsbury Agricultural Education & Arts Foundation, has a mission to support and promote sustainable farming and other arts that nourish community life. For more information about SAGE: contact Stephen Abatiell at educate.sage@gmail.com, Joan Aleshire at 492-3550 or visit www.sagevt.wordpress.com. Follow us on Facebook for up-to-date event details at ShrewsburySAGE and find our sustainability and arts videos at www.youtube.com/@sagefoundation.

~Submitted by Stephen Abatiell



PVF Services LLC

Excavation, Trucking, driveway repair, site prep, building removal, brush grinding and much more!

Neal and Chad	1368 Lincoln Hill
Cell 802 236 8105	Shrewsbury VT 05738
Office 802 492 3364	sharrowmaple@gmail.com

Punschi at the Russleville SchoolHouse

Saturday June 28th at 2pm



PUNSCHI is an enchanting tradition of imaginative puppetry and entertainment! Originally created by Sandglass' Co-Founder, Ines Zeller Bass, now performed by her daughters, Jana Zeller and Shoshana Bass.

Featuring hand puppets, a miniature circus, general buffoonery and music.



Russleville Schoolhouse,
18 Crown Point Road,
Shrewsbury, VT 05738

Program sponsored by:



Beardmore Excavating



(802) 342-3507

Robert Beardmore, Jr.
beardmoreexc@gmail.com

5256 VT-155
Belmont, Vermont 05730

PIERCE'S STORE

802-492-3326

www.piercesstore.com

Hours: 8am to 6pm

Closed Mondays



Hello Shrewsbury!

I am certain everyone has been enjoying the change of seasons. The bears, moose, and fishers are out and Pierce's has held some very fun events. Wine tastings with Jazz and fantastic canapés. A very crave able Taco Night, incredible Pizza Nights, Pop Ups and so much more

Summer has descended, from a backpack full of camping delights, a dry bag filled for a day of fishing, family picnic, star gazing night on the deck, rainy day movie night, or a wildlife filled day at the lake. Pierce's has you covered. If you are looking to grill Pierce's has a variety of locally sourced meat, sausages and vegetables. Want a picnic ready charcuterie? We have Vermont sourced salami, cheese and fresh local produce: micro greens, tomatoes, radishes, fruit, and eggs to mention a few. Looking for a hike and some treats? We have prepared sandwiches, sides, sweets and fresh baked goods. Having a party or special event? We cater!

Need staples? Pierce's has it. It has become a main grocery hub because we meet local grocery stores 95% of the time on price. Personally, I have been enjoying the rapidly expanding Asian section, gluten free buckwheat flour, olive oil, salad dressing supplies, fresh local flowers and my FAVORITE house made sourdough bread. We also have a selection of curated wine, beer and soft drinks.

Harry and Elena are working with many Shrewsbury and Vermont local suppliers to make this summer delicious. Please join in the fun and volunteer. Only 4-hour shifts. It's a great way to meet friends and experience rural Vermont, just shoot us and email at piercesmanager@gmail.com

There are many fun happenings in the works from a July 19 4:30 - 6pm Wine Pairing with Sandy; July 27 9am -1pm Blueberry Festival; August 9 4:30 - 6pm Lepidoptera (story telling); August 16 food pop up, and September 20 Sally Deinzer's presentation of her father's Antarctic Adventure. Please join us for good food and great community at Pierce's. www.piercesstore.com

*Submitted by Jenny Wellenius
Board Member*

Finding Perfect Pairings of Food and Wine

Saturday, July 19

4:30 to 6:00pm

**A new event at the Garage annex
at Pierce's Store:**

Tasting combinations of food and wine
to see which go well together.

Each participant will start with four glasses of wine: a fresh white wine such as sauvignon blanc; a full white such as chardonnay; a medium-bodied red such as pinot noir; and a full-bodied red such as cabernet sauvignon. We'll sample six food types: salty, acidic, fat, bitter, sweet and spicy and rate how well each wine pairs with each flavor. We'll compare notes to see which pairings are heavenly and those to avoid. It will be a group effort with lots of back and forth.

Because of space, the event will be limited to 30 people with advance sign-up required either at Pierce's Store or online at [Eventbrite.com](https://www.eventbrite.com) (search for 'Perfect Pairings Pierces').

Cost: \$25 per person to cover the cost of food and wine.

STUDENT ART SHOW

Opening Celebration August 15

Pierce's Store is hosting a student art show for pre-K through Grade 12 students. The Opening Celebration will take place on Friday August 15 from 4-6pm. Sculptural pieces will later be moved to the Shrewsbury Library starting August 19. The full show will end in September with the date TBD.

Details on how to submit a piece (including drop-off times and dimension limitations) will be available at the Store, the Library, or on Pierce's website. Keep an eye out. We hope you're as excited as we are.

~Submitted by Martha Sirjane and Grace Brigham

BLUEBERRY FESTIVAL



Sunday, July 27

9am to 1pm

At Pierce's Store



To: Postal Patron

Donors are recognized for the remainder of the calendar year in which their donation is received. The *Times* is mailed to all residents of Shrewsbury and is also available online. The cost of printing and mailing is made possible through advertising and donations and are very much appreciated, but are not tax deductible. Donations can be made to: *Times of Shrewsbury*, P.O. Box 373, Cuttingsville, VT 05738. **THANK YOU!**

Marti Andersen
Gary Arthur
Roy & Cindy Arthur
Nate & Angela Bailey
Steve Banik & Virginia Gundersen
Randell & Dianne Barclay
Michael and Elizabeth Bedesem
Nancy Bell
Ludy & Sara Biddle
Rich & Cynthia Biziak
Laura Black
Karen Braeutigam
Kristi & Sandy Bragg
Virginia & Dan Buckley
John & Linda Calotta
The Family of Lila Carrara
Christina Clarke
Peter & Theresa Clarke
Charleen Cole & Ed Garrow
Marilyn Dalick
Sally Deinzer
Philippe & Linda Ducrot
Stan & Louise Duda
Lizzie & Wayne Emmons
Nils and Pamela Erickson
Kathi & Tim Faulkner
Gene & Kathy Felder
Liz Flint
Todd Frederick & Michelle Greene
David & Jo Fretz
Scott Garren & Heather Shay
Jonathan Gibson & Eliza Mabry
Rick Gile & Sue Brown
Mark & Carol Goodwin
Pam & Peter Grace
Robert Greenwald
Barry & Barbara Griffith
John & Tamako Guidry

Carole Cook Haas
John & Betty Heitzke
Connie & Bob Hoelscher
Carmine Iannace & Rita Gyls
Martha Herbert Izzi
Diane Jakobsen
Jack & Betsy Jesser
Ellen Jorgensen
Martin & Julia Kimmig
Lisa King
Michael & Angie Lauri
Ed & Clare Mangine
Gerry & Chryl Martin
Paddy and Alice Martin
Stephen & Patricia Martyn
Taffy Maynard
Lynn McDermott & Becky Bates
Jeff & Pam Monder
Moody Family
David & Georgia Mosher
Jack & Joan Mulqueen
Ray & Cheryl Noble
Trish Norton
Allan Patrick
Fran Patten
Jack & Sharon Perry

Ken & Coral Petretti
Bob & Susan Quinn
Roxanne Ramah
Melissa Reichert
Rainbow Riding Center
Helen & Andy Richards-Peelle
Ridlon Family
Ed & Judy Ryan
Suzanne Savage & Irvin Gordon
Brian & Patricia Sedaille
Alan & Linda Shelvey
Shrewsbury
Community Church
Conservation Commission
Cooperative at Pierce's Store
Historical Society
Library
Outing Club
Mountain School PTO
Volunteer Fire Department
Sirjane Family
Donna Smith
Bob & Sally Snarski
John C. Stewart
Jess & Ariane Torres
Liesbeth van der Heijden
Ann Vanneman
Lana Vanucchi
Arlene Walleth
Reesa Watson
Howard & Deborah Weaver
Jay Webster
Phyllis & Michael Wells
Nancy West
Lee Wilson
William & Peggy Wilson
Brian & Ruth Winkler
Mark & Connie Youngstrom

