



Times of Shrewsbury



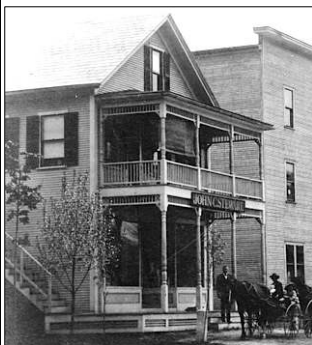
May 2025

HOW TO MAKE A LIBRARY:

A Short Personal History

Cuttingsville Library: 1963-1973

The story of Shrewsbury Library began in 1963 with the Cuttingsville Library in the old Cuttingsville General Store next to Stewart's Garage which was demolished in the 1990's. In 1975 it became Shrewsbury Library Inc. located in the former Cuttingsville School on Town Hill Road.



In the fall of 1963 Michael Aleshire and I moved into the apartment (*photo left*) above the recently closed Cuttingsville General Store: he to work at Spring Lake Ranch; I to find something useful to do. We came with boxes of books from our lives as students and constant readers. The apartment had no book shelves, but the store was

lined with them, as well as large bins for all the supplies a general store of the late 19th-early 20th century would need.

One of Michael's co-workers at the Ranch, Bernard Gregory, surveyed the piles of books, and said: "You should start a library in the store!" The libraries I had known from childhood and college had thousands of books and looked like palaces, but this warm, maple-paneled space spoke of possibility.

While Michael worked as a crew leader, carpenter, plumber, or whatever else was needed at the Ranch, I was happy to work with Ranchers marking and stamping the books, arranging them on the ample shelves, and establishing a simple check-out/check-in system.

Our own books made a very small and narrow collection—mostly fiction and poetry—but the Regional Library had a Book Mobile—a van fitted with shelves—that visited small libraries every three months. Each library could borrow a large and varied collection of books to circulate to borrowers. Kids and their parents would line up to enter the Book Mobile when it parked outside the library. At the time, we had no Times of Shrewsbury or, of course, internet, to let people know when the van was coming. I called borrowers as soon as I heard from the Regional Librarian with a date and time, and put signs in the large display windows.

Our daughter, Anne, was born in 1964. Because I lived upstairs and she was a wonderful baby, I could put her in her carriage to sleep, and later, in a playpen to play in the library while I staffed. I don't remember how many hours the library was open, but remember that we would always provide a book in an emergency!

We had a small but devoted number of supporters, who became trustees: Nancy Spencer, Peggy Patten, Emily Korngiebel, and Heidi Mitchell. Our rules and policies were simple; expenses were minimal; donations were generous.

In the summer of 1965 when an extraordinary number of gifted guitar-players found themselves at the Ranch, the library organized a Coffeehouse Concert, the first in what would become a long and storied line of music events. We made what seemed like fancy coffee in those days: no espresso machine, but a lot of whipped cream and fun!

In the fall of 1966, Michael and I decided to leave the Ranch, and go back to New York City where he had worked as a photographer and I had gone to graduate school. Rita Lane had moved across the street a few years before, and volunteered to be the Librarian. Thanks to her efforts, the Cuttingsville Library was able to stay open, even when hours were on an on-call basis.

Shrewsbury Library, Inc. 1975 and counting....

In the summer of 1973, I moved back to Shrewsbury with my daughter while Michael stayed in New York to pursue a career as a photographer. We bought and renovated Bill Adams' tenant house on what is now Mitchell Road. Anne entered

fourth grade at Shrewsbury School in the back room of Town Hall (or The Meeting House, as it's come to be known). The Cuttingsville School had closed the year before, being in violation of State regulations on septic waste, and stood empty. The apartment above the former general store was rented, and the books in



CELEBRATING 50 YEARS

The Cuttingsville Library had been boxed and parceled out to various library supporters.

The Cuttingsville School was a viable space for a re-opened library, with its large south-facing windows and some built-in shelves. We had heat and light, and a pool of volunteer staffers willing to take short shift at times that seemed convenient for most people, making sure to include evenings, afternoons, and Saturdays.

With the pro bono advice of a lawyer friend, we became a not-for-profit corporation, with trustees and by-laws. The three original incorporators were: Peggy Patten, Nancy Spencer, and I. We elected officers, and appointed 10 more trustees, for a total of 13, who would staff during library hours, fund-raise, and do the library's business as we determined it at

(Continued on next page)

(Continued from front page)

monthly meetings. As Shrewsbury Library, Inc., we bought the building and property from the Shrewsbury School Board for a nominal and generous two dollars!

The Southwest Regional Library branch provided the bulk of our collection in the beginning, delivering books at three-month intervals, and also, through annual surveys, helped us reach minimum standards for Vermont public libraries. We made do with very little; our first Town funding request was for \$100. We hosted story hours and poetry readings in the main room of the library, before there was a Meeting Room or a Children's Room. We showed films in the Town Hall/Meeting House; the Regional Library loaned us children's movies and an analog projector; Weezie Duda and Reenie Lincoln ran movie programs for kids.

In the early 1980s, the Shrewsbury Historical Society, under Nancy Spencer's direction and with her support, hired builders Patten, Lyon & McDermott to renovate the empty second floor of the Library building to house the Historical Society's collection and archives. The SHS signed a seven-year, renewable lease with the Library in 1983.

We worked steadily to maintain the building—painting the exterior (thanks to Terry Martin); glazing the windows; adding insulation. We built shelves and added books to our collection. To make the Library more accessible to everyone, the trustees, with Joe Patten's guidance, decided to remove the concrete platform in front of the building and hire Mike Stewart and WoodWise to install a porch with a ramp leading to the parking lot.

When the SHS moved into the former Cuttingsville Church, and the Library had the use of the whole building, we asked architect John Berryhill to design extensive renovations. Donna Swartz wrote successful grants to the Preservation Trust of Vermont and the Freeman Foundation, requesting funds to install an elevator lift to access the second floor, renovate the Meeting Room; replace the old woodshed with a children's room; add a bathroom, small kitchen, and a great room connected by a spiral staircase to a loft above.

We raised a total of \$160,000 from grants and individual donors, and in 2004 hired contractor Gregg Over to complete the additions that brought the mid 19th century school into the 20th century, and fit into the building's historic footprint.

In the mid-1990's, Eleanor Tufano, a retired kindergarten teacher, became a volunteer, a trustee and then the Children's Librarian, engaging dozens of Shrewsbury students in the Children's Librarian program, story hours, and other activities. Shrewsbury teacher and artist Grace Brigham and I ran an after-school program, the Hungry Poets Society, which featured poems and cookies.

The Meeting Room has become the site of informative and entertaining events, from John and Linda Berryhill's 2001 program on Afghanistan, to readings of poetry and fiction, to Jonathon Wells' presentation of his geological photographs, to George Woodard's films, and more. Our continuing monthly programs include the Writers' Group, the Famous Books Book Club, and the Science Book Club. Our fund-raisers have ranged from Kids' Karnival, to Coffeehouse Concerts, to the

Taco Dinner and Street Dance, to our crowning event: the Cookie Share/Silent Auction/Holiday Party.

Our quilt raffles, donation letters, and the generosity of donors have allowed us to request level funding at \$7,500 for the past 20 years. We have replaced old windows and two boilers over the years, and recently had the floor refinished. A new Meeting Room carpet is next on the to-do list.

The sale of raffle tickets for our Tree Quilt, created by Trish Norton, made possible the donation of tree identification books to students at Shrewsbury Mountain School in 2023 in memory of beloved forester Gary Salmon.

Our list of trustees and volunteers is been long and vital; some of our loyal volunteers are former trustees. Some current trustees (Lisa Sharrow, Trish Norton, Gail Hartigan, and Dirk Thomas) have been on the Board for over 20 years; some have stepped down and returned, as their schedules changed. Donna Swartz became a trustee in 1985, and was named Trustee of the Year by the Vermont Department of Libraries in 2004.

We have consistently met Standards for Vermont Public Libraries. In 2007, we automated our circulation system—an enormous job of entering our entire collection into a digital catalog, thanks to Donna, Lisa, and Gail. We installed two computers and a copier/printer for public use. A Five-Year Plan Committee made up of Trustees and Patrons guided us to make improvements in our desk and filing system, to re-surface the parking and provide better outside lighting. Donna completed courses offered by the Department of Libraries, and became our Vermont Certified Librarian in 2013. Currently she and volunteer Fred Michel are adding large, legible labels to our books and DVDs for easier locating and re-shelving.

In the spring of 2020, with the onset of the COVID pandemic, we pivoted to a limited schedule staffed by a few trustees; provided masks and hand sanitizers to patrons; offered porch pick-ups and home deliveries, and were able to stay open.

Last year, I stepped down as Co-President, and was elected Vice-President. I've been a trustee, and sometimes the president or co-president, of the Library since its founding. I'm grateful to others who headed the Board while I was away working at Warren Wilson College: DeeDee Erb, Heidi Mitchell, and, later Ginny Buckley. I am especially thankful for our current executives—Co-Presidents Lisa Sharrow and Trish Norton, Secretary Gail Hartigan, and for Donna Swartz as our Library Director.

Thanks to funding from the Vermont Department of Libraries, we have been able to offer services that meet 21st century needs: Inter-Library Loans; ListenUp/Libby for e-books and audiobooks; the ABLE library for the visually impaired; the VT On-line Library for access to magazines and newspapers; continuing education opportunities; summer reading programs and more. Recent cuts in federal funding to the Institute of Museums and Libraries may affect our ability to offer those important programs, but we will continue to adapt to changes and respond to community needs, providing information, entertainment, and enlightenment going forward in the Vermont way.

~Article by Joan Aleshire

~Photo courtesy of Shrewsbury Historical Society

SHREWSBURY COMMUNITY CALENDAR

Apr 27	4pm	*Laurel Glen Association Meeting. Email laurelglen.bowmanmansion@gmail.com for location.
May 3		GREEN UP DAY
May 4	4pm	*Writers' Group at the Shrewsbury Library
May 5	5:30pm	*Shrewsbury Historical Society first meeting of the year at the Museum
May 8	1pm	*Ramp It Up 5k run sponsored by Spring Lake Ranch (see article)
May 9	7pm	*Will Patten will talk about his new book at the Shrewsbury Library
May 10	7pm	*Music Jam at the Russellville School House
May 16	7-9pm	*Problems with, and Solutions for, the use of rodenticides presentation at the Library
May 18	2pm	*Shrewsbury Singers concert at the Russellville School House
May 18	4:30pm	*Famous Books Book Club discussion at the Library
May 23	4pm	*Beer Tasting and Mexican Food at Pierce's Store
May 24-25	10am-5pm	Vermont Crafts Council Open Studio Weekend
May 25	4pm	*Science Book Club discussion group at the Library
May 27	12noon	*Prayer Shawl group meets upstairs in the Meeting House
May 31	4-6pm	*50 th Anniversary program at the Shrewsbury Library
June 13	6pm	*Stockwell Brothers concert at the Meeting House 88 Lottery Road
June 14	9am	*Nature Scavenger Hunt at Jockey Hill Farm at the end of Coldham Road,
*see elsewhere in newsletter for details		

TIMES OF SHREWSBURY
Online at
www.shrewsburyhistoricalsociety.com
www.shsrewsburyvt.org



**Deadline for submission to
Times of Shrewsbury is by
5:00pm
on the 20th of each month.**

REGULAR MEETINGS and EVENTS

Selectboard Meeting	1 st & 3 rd Wednesdays – 6:30pm at Town Office
Bone Builders	Tuesdays & Thursdays--May-Oct: 9-10am; Nov-Apr: 10-11am at Meeting House
Development Review Board	4 th Wed -7pm at Town Office; check town website for agenda
Library Trustees Meeting	2 nd Tuesday – 7pm at Shrewsbury Library
Mill River Unified Union School Board Mtg	1 st Wed 7pm @ MRHS & 3 rd Wed. 7pm at MRHS unless otherwise warned
Planning Commission	2 nd & 4 th Tuesdays 7pm at Town Office
Prayer Shawl Group	4 th Tuesday at 12noon upstairs at the Meeting House
Religious Society of Friends (Quakers)	Sundays – 10am via Zoom; contact wildernessfriends@gmail.com
Shrewsbury Community Church	Sundays – 10:30am - Worship service
Shrewsbury Conservation Commission	1 st Tuesday @ 5:15pm via Zoom (Feb – May); contact vtzippity@gmail.com
Shrewsbury Historical Society	1 st Monday- 5:30pm at the Museum
Shrewsbury Historical Society Museum	Open 1-3pm Sundays only from July 6th to October 26, 2025
Shrewsbury Singers	Sundays 9-10:30am and Tues 6:30-8:00pm @ Meeting House
Shrewsbury Sno-Birds	2 nd Tuesday – 7pm at Southside Steakhouse in Rutland
Shrewsbury Volunteer Fire Department	Thursdays – 7pm at the Cuttingsville Station

Shrewsbury Town Website: www.shrewsburyvt.org

Clerk's Office	492-3511	Mondays & Thursdays 8:30am-1pm; Wednesdays 1pm-6pm (Fax 802-492-3383)
Town Garage	492-3656	(Follow prompts to report roadway blockage on non-work days)
Listers	492-2009	Available by appointment
Treasurer's Office	492-3558	Monday 9am-11am
Transfer Station	492-3867	Sunday 8am-4pm ~~ Wednesday 12noon-6pm
Library	492-3410	Hours: Mon 10am-12noon; Tues 7-9pm; Wed 10am-5pm & 7-9pm; Thurs 7-9pm; Fri 10 12noon; Sat 10am-12noon
Meeting House	492-6050	Reservations: 492-3361 or julanne@vermontel.net
News Flash Email:	vtbenbeano@gmail.com or benbeano@vermontel.net	an email list for Urgent and reminder news information
Cuttingsville Post Office	1-802-230-1996	<u>Window Hours:</u> Mon-Fri 7:30am-10:30am and 11:30am-2:30pm; Sat 8am-11am <u>Lobby Hours</u> Mon- Fri 7:30am-5:00pm and Sat 7:30am-11am
Burn Permit:	Forest Fire Warden Kevin Brown 802-345-8668 or, Deputy Fire Warden Al Ridlon, Jr. 802-282-3642	
Animal Control Officer:	Adrienne Raymond 802-492-3578	
1 st Constable:	Aaron Haupt 558-9980	Game Warden: Tim Carey 793-2776
Emergency Management	Aaron Korzun 492-3362	Green Mountain Power outage 1-800-451-2877
Medical-Police-Fire Emergency	Dial 911	Ambulance 773-1700 Rutland Hospital 775-7111

[Updated 9/1/24]



Vermont State Senators:

Brian Collamore: bcollamore@leg.state.vt.us

Terry Williams: twilliams@leg.state.vt.us

David Weeks: dweeks@leg.state.vt.us

Vermont State House of Representative:

Kcwinter5783@gmail.com or 802-245-4190

The Vermont General Assembly is in session January thru June. To view committee memberships, bills that have been introduced, track each bill's progress, and review committee agendas go to www.leg.state.vt.us. During the week you can contact your legislator by leaving a message at the State House by calling 1-800-322-5616 or 828-2228 (the Sergeant-At-Arms' Office).

United States Senators:

Senator Peter Welch

www.welch.senate.gov

Vermont Office: (800) 642-3193

Washington D.C. Office: (202) 224-4242

Senator Bernie Sanders

www.sanders.senate.gov/contact

Vermont Office: (800) 339-9834

Washington D. C. Office: (202) 224-5141

United States House of Representative:

Representative Becca Balint

Vermont Office: 347-461-4982

Washington D. C. Office: (202) 225-4115

Revised 2/1/25

GREEN UP DAY'S 55th BIRTHDAY

Each year, dozens and dozens of Shrewsberries gather at the Meeting House on the first Saturday of May to have a bit of breakfast and leave with bags in hand to pick up roadside trash throughout town. And each year most, if not all, fifty-six miles of town roads are walked and the garbage collected so our roadsides look nice for the coming warm months. This ritual is the same in most communities throughout Vermont. How did this wonderful tradition start?

In 1969, Burlington Free Press reporter Robert Babcock, Jr. was bothered by the roadside trash he saw on his commute to Montpelier, after the snow melted. Babcock suggested a community organized statewide cleanup to first term Republican Governor Dean Davis who thought the suggestion was a fantastic idea. Davis assigned his senior aid, Ted Riehle, to organize the event. Riehle had been the driving force behind the billboard ban which passed the legislature the year before.

So, on April 18, 1970, Vermont had its first Green Up Day. 70,000 Vermonter's participated that first year. The Governor ordered all of Vermont's interstate highways closed, from 9 am to noon, as some folks took to those new pathways into the Green Mountain State. The Governor visited volunteers around the State by helicopter, doing his part by picking up some trash and thanking volunteers. Mr. Riehle, who owned a Cessna 185 flew over sections of roadways and, with a megaphone mounted on the bottom of the plane, shouted encouragement to workers below.

When it was documented that much of the litter that year consisted of beer cans and bottles, the Legislature took up Vermont's Bottle Bill which was passed into law in 1973.

~by Mark Youngstrom

TIMES OF SHREWSBURY

The Times of Shrewsbury is published monthly from February through December, and compiled by volunteers from material submitted by residents with the goal of informing townspeople of what is happening in Shrewsbury. The views and opinions expressed in articles are solely those of the author and not necessarily those of the editors.

All submissions must be accompanied by the name of the submitting person and are printed at the editors' discretion subject to editing for length and clarity. Letters to the Editor exceeding 350 words will be subject to editing for length. Any information piece or informational political letters (without specific party or vote appeal) will be subject to the guidelines previously described.

A writer of a letter that directly names a Shrewsbury resident or organization in a critical manner must get copies to the resident or organization, and to the Times by the 10th of the month prior to publication or it will not run. If the named person or organization indicates in writing to the writer and to the Times that they choose not to respond, the letter will run. If the named entity responds, the response and initial letter will run in the same issue.

There is no charge for: jokes, poems, nature reports, family event announcements, feature articles, or letters that are not commercial. Also, there is no charge for appropriate notices of free items.

Articles and Advertisements: Deadline for submission is 5pm on the 20th of the month prior to publication; exceptions will be announced in the prior month's Times.

Ads in the Times are for area businesses, local non-profit events, and local ballot election advertisements.

Best Formats: Articles: Word or as an email message with no formatting. Photos: jpeg. Ads: jpeg or Word document.

Monthly advertising fees and relative sizes:

Full page	\$110	(7.5"w x 9.5"h)
Half page	\$60	(7.5"w x 4.5"h or 3.5"w x 9.5"h)
Quarter page	\$15	(7.5"w x 2.5" h; or, 3.5"wx 4.5"h)
Business card	\$10	(3.5"w x 2"h)
Classified ad	\$5	(15 words or less)

Payment due by the 20th of the month prior to publication.

1/18/25

Chryl Martin

~

Rich Biziak

Times of Shrewsbury, P. O. Box 373, Cuttingsville, VT 05738

Email: shrewsburytimes@gmail.com

Online: www.shrewsburyvt.org

and <http://www.shrewsburyhistoricalsociety.com>



GREEN UP DAY 2025 SAT. MAY 3

invites **YOU** to the
MEETING HOUSE
★ 8-10 AM **BREAKFAST**

① Select your ROAD
on OFFICIAL MAP

② Take 2 BAGS

(1 for recyclables, 1 for trash)

③ TAKE A RAFFLE TICKET (KIDS' RAFFLE & ADULT RAFFLE)

★ 10 AM ~ NOON

DELIVER FULL BAGS
TO TRANSFER STATION.



BREAKFAST 8-10 AM



RAFFLE PRIZES!

THANK YOU!

FROM YOUR CONSERVATION COMMISSION



YOU MAKE OUR TOWN BEAUTIFUL.



IN MEMORY OF MICHAEL BEDESEM

My step-dad, Michael Bedesem, passed away from Covid on Saturday, April 5, 2025. He was a lovely man. Most local folk knew him as part of the powerful renovation team that he formed with my Mom, Liesel (MarMar to many), and many other local craftsmen.



Born in NYC along with his twin, Michelle, on April 1, 1942, he considered himself to be from Glens Fall. He graduated from Bucknell and almost finished his doctoral thesis from Carnegie Mellon. He was a trained physicist who found that he had a great talent for business. He joined LeCroy Research Systems very early in that company's life, retiring as CEO early to return to the North Country to live the rest

of his life. Here, he and my mom (who also retired from LeCroy) renovated local houses from the studs out - 12 of them before they felt done. They did this because they enjoyed the work of saving each and every one, restoring them to their original beauty.

In the years after, they enjoyed so many drives checking on each house and its tenants. They also finished their own home on the hill designed by John Berryhill and fitted with Helmut Hirschman's wonderful windows. Michael loved his home and my Mom through his last day. Together they worked, travelled, and became members of the Shrewsbury community.

He spent many summer days fishing on Spring Lake- on his boat or from the dock of the camp he loved. In years prior, he and son-in-law, Ed, spent many happy days on the Lemon Fair; with my Mom and her book on their boat on Lake Champlain; and on other boats on Lake George, Paradox, and Schroon. Fishing always being a common theme. He was so happy to leave the camp for the family to enjoy for years to come.

He did so much in his 83yrs. The void he leaves is huge. His family and friends miss him greatly. Please, remember him as he was happiest, travelling around with my Mom in their little white SUV checking the houses or heading to Pierce's for lunch. There are no formal services planned.

He is survived by Liesel Bedesem; Adrienne & Ed, Ben (Rachel), Nate (Darcy), Sam (Kate), Mackenzie, Emmeline, Reid, and Warren Raymond; Barbara & Clay, Hans (Nicole), and Will Brown; and other family members in California, Florida, Pennsylvania, and Texas.

~With Love, Adrienne Raymond



CELEBRATION OF LIFE FOR LILA WOODARD CARRARA

June 7, 2025, 12 – 4pm

Shrewsbury Community Meeting House, 88 Lottery Road

The Family of Lila Carrara cordially invites you to join us as we celebrate her amazing life. Lila was a beloved wife, mother, grandmother and great grandmother and a friend to all.



We will gather to share our favorite memories and stories in remembrance of her never-ending smile and warm embraces. Join our family to toast this fabulous, strong woman who treasured her family and friends more than life itself.

If you have a photograph and/or a note of your remembrance of her, please bring it to share for our memory wall.

Hors d'oeuvres and a variety of foods will be served. Bottled water also will be available. If you wish to contribute a dessert, it will be greatly appreciated. Please bring a beverage of choice and a cooler if necessary.

Weather permitting, we hope to have it outside. Bring a comfortable chair for yourself to sit in. There will be tables and chairs inside the hall for dining.

Enjoy spirited music provided by Rick Redington and Tuff Love Band, Lila's favorite local musicians.

**If you haven't already responded, please text or call
Kathy: 802-353-1593 (Leave Message). Thank you.**

~~~~~

### CELEBRATION OF LIFE FOR DAVID RICE

August 5, 1933-January 7, 2024

**JUNE 22, 2025, at 5:00pm at Steeplebush Farm  
(David and Dino's former farm at  
407 Coldham Road, Shrewsbury, Vermont)**



We will be holding a gathering of celebration in the back yard behind David and Dino's old home in Vermont on Coldham Road at 5:00pm on Sunday, June 2, 2025.

We are pleased that former Shrewsbury resident; Thomas Mousin will be able to join in the celebration. Come with your favorite David story to share, or

just come to remember what a special person he was both as a father, grandfather, educator and contributor to the Town and everything else he was involved in.

If you have any questions, please call me at 802-353-1695 or email me at [Steeplebush@aol.com](mailto:Steeplebush@aol.com), or, stop by the Town Office when my little silver car is out front. My nephew Chris Calkins, (David's grandson) and I look forward to seeing my father's friends come and celebrate his wonderful life!!

*~Submitted by Rebecca Rice*

## SHREWSBURY SELECTBOARD MINUTES

*The Selectboard meets the 1<sup>st</sup> and 3<sup>rd</sup> Wednesday at 6:30pm at the Town Office.*

### April 2, 2025: Minutes of Selectboard Meeting

**Present at meeting:** Selectboard members: Aaron Korzun, Marc Cimonetti, Francis Wyatt. Town Clerk: Rebecca Rice.

**Members of the public:** None

The meeting was convened at 6:32 PM

**Agenda:** Motion made by A. Korzun to follow the agenda with the additions of: Road Commissioner Report, Certificate of Compliance for Town Bridge and Road Standards and Network Inventory, Annual Financial Plan – Town Highways, Mountain School Dam. F. Wyatt seconded. All in favor, motion approved.

**Excess Weight Permits:** Aaron Korzun made a motion to approve excess weight permits for Amerigas, New England Quality Service, Barrett Trucking, Cota & Cota, Casella Construction, Kennedy Excavation LLC, and Feed Commodities. Marc Cimonetti seconded. Approved.

**2025 LEMP:** Made first pass at updating the LEMP application that needs to be completed by June 1<sup>st</sup>.

**Road Commissioner Report:** Aaron reported on Dan's behalf that they are doing spot grading and cleanup from the ice storm and getting ready for another possible storm tonight.

**Certificate of Compliance for Town Bridge and Road Standards and Network Inventory:** A. Korzun made a motion to accept the Certificate of Compliance for Town Bridge and Road Standards and Network Inventory. Seconded by M. Cimonetti. Approved.

**Annual Financial Plan – Town Highways:** A. Korzun made a motion to accept the Annual Financial Plan – Town Highways. Seconded by F. Wyatt. Approved.

**Mountain School Dam:** Karina Dailey of VNRC sent an email saying that Katie Stiles (the new District Manager for Rutland NRCD) offered to apply for NRCC funding for the dam removal phase of this work. She also asked for a letter of support from the Selectboard. The Selectboard drafted a letter of support and will be sending to Karina.

**New Business/Open to the Public:** None

**Review Minutes:** A. Korzun made a motion to accept the 3/19/2025 Selectboard meeting minutes. Seconded by M. Cimonetti. Approved.

**Review Orders:** F. Wyatt made a motion to approve Selectboard Orders #4 for \$6,506.03 and Road Orders #4 for \$19,338.13 and Selectboard Orders #3A is corrected to \$6,615.31. Seconded by M. Cimonetti. Approved.

**Adjourned** at 7:30 PM

*Respectfully submitted, Francis Wyatt*

These minutes are unofficial until approved by the Selectboard at the next regularly scheduled meeting.

### April 16, 2025: Minutes of Selectboard Meeting

**Present at meeting:** Selectboard members: Aaron Korzun, Marc Cimonetti, Francis Wyatt. Planning Commission member: Laura Black. Road Commissioner: Dan Cavoto

**Members of the public:** None

The meeting was convened at 6:34 PM

**Agenda:** Motion made by A. Korzun to follow the agenda with the addition of: Excess weight permit for Structural Wood Corp. F. Wyatt seconded. All in favor, motion approved.

**Excess Weight Permit:** Aaron Korzun made a motion to approve an Excess Weight Permit for Structural Wood Corp. F. Wyatt seconded. Approved.

**Otter Creek CUD:** Aaron Korzun made a motion to approve a letter of support for Consolidated Communications Incorporated (CCI) applying for BEAD funding. Francis Wyatt seconded. Approved.

**DRB Appointments:** Aaron Korzun made a motion to appoint Cynthia Thornton and Ryan Fitzbeauchamp as DRB alternates. Marc Cimonetti seconded. Approved.

**Class 4 Roads Reclassifications:** Discussed the process of reclassifying Class 4 roads. Thought best to start with the easiest roads. The Town would be unburdened for hydrologically connected sections if a road is thrown up. There may be survey costs with reclassifying. Roads serving a single property owner are the most logical ones for reclassifying to either a trail or thrown up. If a road is a trail, is approval needed for logging operations? Went through the list of Class 4 Roads and discussed possibilities of reclassifying.

**2025 LEMP:** Marc Cimonetti sent the other Selectboard members a draft version of an updated LEMP application that needs to be submitted by June 1st. A. Korzun and F. Wyatt will review and get back to Marc.

**New Business/Open to the Public:** Laura Black will be following up on ARPA funding to make sure we're all settled up.

**Greenup Day tickets:** The Selectboard supports the idea of providing dump tickets for Greenup Day prizes.

**Review Minutes:** A. Korzun made a motion to accept the 4/2/2025 Selectboard meeting minutes. Seconded by M. Cimonetti. Approved.

**Review Orders:** F. Wyatt made a motion to approve Selectboard Orders #4a for \$3,444.51 and Road Orders #4a for \$37,010.42. Seconded by M. Cimonetti. Approved.

**Adjourned** at 9:07 PM

*Respectfully submitted, Francis Wyatt*

These minutes are unofficial until approved by the Selectboard at the next regularly scheduled meeting.



## NEWS FROM LAUREL GLEN ASSOCIATION (LGA)

The 1st meeting of Laurel Glen Volunteers is Sun, April 27 at 4:00pm. For location, if you haven't received an email already, email laurelglen.bowmanmansion@gmail.com ASAP! Don't miss out on our first informational meeting of the season. There is a lot to share and plan!

Winter takes a toll on the mansion, evidenced by mouse activity and dust. The first thing we do is clean! At the meeting, we'll schedule clean up (and repair) days.

Spring has arrived; it's time to turn our attention to the Conservatory! In Mr. Bowman's day, the greenhouse had a glass roof, running water, and a furnace that allowed staff to grow plants all year long. Mr. Bowman demanded fresh flowers at the mausoleum. The glass roof was replaced, and the furnace doesn't run, but the greenhouse is spectacular and is a place where plants can flourish. If gardening is your thing, join us at Laurel Glen to help get the Conservatory working again!

Last year, we held some Open Houses and a fabulous cemetery tour. All our events are planned and staffed by incredible volunteers. We greet the public as the household and gardening staff of Mr. Bowman, uniformed as his servants might have been. The mausoleum was a very popular tourist attraction when it was first built, and over 10,000 visitors came to see it in one year alone! The 1880s were the Gilded Age, and peeking into the homes and cemeteries (and picnicking in them!) of the very wealthy was a popular pastime for the average person. We want to hold more Open Houses and cemetery tours this season. To do so, we need dedicated volunteers. Join this fun group and find your area of interest. Is it leading Victorian games? Leading cemetery and house tours? Small repairs? Cleaning? Making uniforms? Gardening? Moving and repairing furniture? Researching? Fundraising? Outreach? There is something for everyone! Email laurelglen.bowmanmansion@gmail.com to find out more!

**DID YOU KNOW?** Our youngest volunteer started here at age 10! No age limit!

~Submitted by Pam Monder

### FREE MEDICAL EQUIPMENT

Medical equipment has been donated by Shrewsbury residents who no longer need them. These are available at no cost on a loaner basis. On hand right now are many wooden crutches, adjustable aluminum crutches, walkers, rollators, commodes, shower seats, bedpans, toilet safety bars, a large wheelchair, and more. If you need any equipment or have any items to donate, call Donna Swart at 773-7403.

## NEWS FROM THE TOWN CLERK

I was able to take a two-week vacation to Portugal at the beginning of April. It was my first vacation in 2 years, so it was desperately needed. My thanks go out to Betsy Jesser who covered the office while I was away. I am now back, and mentally very refreshed.

Although the period to license dogs without a \$4.00 penalty expired on April 1, 2025, it is not too late to register your dog with the Town Clerk. This is required by state law. The fee is now \$15.00 for a spayed or neutered dog, and \$19.00 for an intact dog.

As this year only has one election, the Board of Civil Authority will be going through the checklist to bring it up to date and to check with those who we do not believe currently reside in Shrewsbury. If anyone has moved, and has not yet registered to vote in another town, or has not notified me to remove them from the checklist, that would be greatly appreciated.

Some COVID tests are still available at the Town Office.

If you have any questions, feel free to contact me at 802-492-3511, 9823 Cold River Road, Shrewsbury, VT 05738, or shrewsburyclerk@vermontel.net.

~ Submitted by Rebecca A. Rice, Town Clerk

## Shrewsbury Planning Commission News

### - Focus Group Discussions

As we are well underway in our work on the updated Town Plan, the Shrewsbury Planning Commission will be inviting townspeople and experts to join our scheduled Focus Group discussions. These will cover town resource topics such as: Forest Health, Wildlife Habitat, Outdoor Recreation, Agriculture, Housing, Energy, and possibly more.

Participants will discuss the resource's current condition, identify its potential vulnerabilities, recent changes, and current as well as future significance in our town.

The Planning Commission will post these focus group schedules on our agendas, and we will post announcements (in 'Town News & Announcements') on the town website so that all interested residents can attend.

We expect to begin the Focus Group series in late May or early June. ~Submitted by Laura Black



## EXCAVATION AND SNOW REMOVAL

- \* Free estimates
- \* Offers seasonal rates

**Nicholas Greene**

Mountain School Road  
Shrewsbury VT 05738

**802.855.1215**  
DIGPROLLC@GMAIL.COM





## SHREWSBURY VOLUNTEER FIRE DEPARTMENT

Spring is here! Our yards and woods are greening up! It's a great time to clean up the yards and the woods. If your plans include burning clean yard debris you **MUST** call the Forest Fire Warden for a burn permit. A recent fire in a neighboring town destroyed a storage building and damaged a nearby home. It appears embers from a debris fire started the structure fire. You are ultimately responsible for any damage from a controlled burn that starts another fire. Please ensure you are away from structures and have the resources to control the fire. If your fire gets out of control, call 911 immediately.

In the past month SVFD responded to two calls. The first call was during the ice storm on March 30 for a reported structure fire. Mutual aid was also called with Mt Holly and Clarendon both responding with manpower and equipment. Fortunately, we were able to contain the damage to a small area of the home.

The second call was for a chimney fire that was quickly extinguished. After a chimney fire, the chimney should be inspected. Damaged flues can cause a problem down the line, so always have your chimney inspected annually.

We performed vehicle maintenance, checked our brush fire equipment readiness. We cleaned up our trucks and hand equipment after the two previous calls.

During our monthly business meeting we reviewed the calls for the last month, made plans for the next month and upcoming events. We received information from the State of a grant program for developing local water supplies for firefighting. These grants include money and information on how and where to install a dry hydrant. In the last few years, due to flooding and other events, we have lost water sources. If you have a water source that may be evaluated to be put in use as a dry hydrant, contact a member of the SVFD and we can provide more information.

Enjoy the spring weather and

**REMEMBER! STAY FIRE SAFE!**

*~Submitted by Jack Perry*



### BURN PERMITS

If you are plan to burn brush you **MUST** call for a burning permit. **Contact Forest Fire Warden Kevin Brown 802-345-8668 or Deputy Forest Fire Warden Al Ridlon, Jr 802-282-3642.** The landowner is responsible to control a brush fire, ensure you have proper tools, water supply, and people to assist in containing the fire.



### Activities are gearing up

Back at the end of March, twelve Green Mountain Neighbors members and volunteers

enjoyed lunch at The Dollhouse Restaurant run by the culinary program at The Stafford Technical Center in Rutland. It was a delightful time and a great lunch. We each



met people we hadn't previously known. And at the end, everyone agreed that we need to do this on a regular basis. Plans are underway for a lunch at Roots Restaurant in Rutland for late May.

As you may know, one of the primary goals of GMN is to provide opportunities for sometimes isolated residents of our three towns – Mount Holly, Shrewsbury and Wallingford -- to socialize with others. In addition, our volunteers can provide services such as providing car rides to appointments, help changing out storm windows and doors, making wellness calls, and more.

Our calendar of events for members and volunteers will soon expand to include some more activities like "urban" or "rural" walks, wine & cheese chat sessions, blueberry picking and possibly some yoga and/or tai chi classes.

We hope to host a get-to-know Green Mountain Neighbors event at a special location during the summer. This will be open to all. Watch our events announcements and website calendar for more information about it. <https://greenmountainneighbors.org>

In the meantime, check out our new brochure located at the libraries, town offices, stores and other public locations in each of our towns: Mount Holly, Shrewsbury, and Wallingford.

If you have questions, please call us at 802-417-2292. Leave a message and you'll get a call back within one day.

*~Submitted by Sally Deinzer*

### THE SVFD NEEDS YOU!

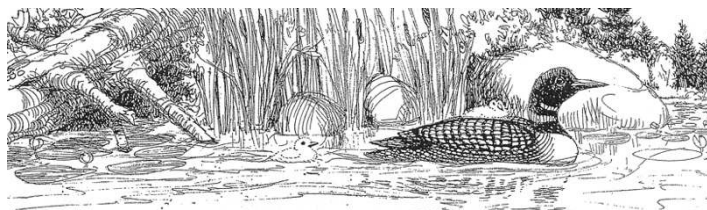
We need new and younger members. The Shrewsbury Volunteer Fire Department (SVFD) can provide equipment, training, and support. Whether you've had prior experience as a first responder or have no experience at all! We need volunteers. Men or women who would like further information may call Bob Snarski at 492-3505, Barry Griffith at 492-3573, or Jack Perry at 773-3278. No commitment necessary.

## Shrewsbury Outing Club is turning 70!!

**Who we are:** The Shrewsbury Outing Club (SOC) is a volunteer, Nonprofit Organization, membership of which is open to residents and landowners of Shrewsbury. The SOC focuses mainly on two recreational places here in town – Spring Lake, where the SOC leases a piece of waterfront, enabling members to enjoy a small swimming area; and the Plymbsbury trail system in Northam, where the SOC works with the State of Vermont to maintain trails for cross-country skiing, snowshoeing and walking. We also have occasional outings, work with the Lake Shore Owners on monitoring loons and water quality, and have, historically, provided swimming lessons to local children.

**A look back (by Grace Brigham):** In the early nineteen thirties, when the Sarcka family came to Shrewsbury and created Spring Lake Ranch, the lake had just a few cottages along its rocky, wooded shore. Elizabeth and Wayne Sarcka and the Ranchers treasured the Lake and the Shrewsbury community. They welcomed local families to enjoy swimming and boating from their dock.

As the Ranch population grew, and more families shared the dock, it became clear that it would be helpful to spread out. In 1955 a group of local families formed an organization that Jack Spencer named the “Shrewsbury Outing Club.” Spring Lake Ranch leased us their area, since folks were used to swimming there, and created a new waterfront further along the shore. This afforded more privacy for their year-round programs.



From the start, the SOC provided swimming lessons and water safety classes at the Lake – Marcos Levy and his crew taught for 25 years! Early on, a Junior Audubon Club, led by Nancy Spencer, Laicita Cook, Frances Brigham and others provided opportunities to study wildlife. Today, members of the SOC continue water quality testing, as well as the study of plant and animal life at the Lake. Loons, beavers, and occasionally bears, deer and moose make their presence known.

Members Lee Wilson, and presently, Lana Vanucchi, have served as trail stewards and liaisons with the State. Volunteers maintain the trails for hiking, snowshoeing and cross-country skiing in North Shrewsbury. More help is always welcome.

Over the years, there have been wonderful expeditions with overnight camping and adventures in the wilderness. One summer, Dick Adams organized a townwide “Day at the Lake.” Realizing Spring Lake couldn’t accommodate all of us at once, a jolly crowd of Shrewsberries travelled by bus to Teachout’s Wharf on Lake Champlain. We boarded the M.L.



Carillon for a splendid picnic, historic cruise and tour of Fort Ticonderoga. In subsequent years we have had thrush walks and star gazing with local experts, and a hike through Black Swamp with naturalist Alcott Smith of New Hampshire.

In its first 70 years, the Shrewsbury Outing Club has evolved into more than a recreational club at Spring Lake. So many generations of us have grown up loving this place we call home. I have observed a steadily growing sense of the importance of our stewardship, in cooperation with landowners (around the Lake and elsewhere) of Shrewsbury’s unique beauty. It’s no accident that our wooded mountain trails and tiny Lake are so beautiful and here for everyone to gently share and enjoy.

This writer got to be present when the SOC was formed, and I’m grateful to see it in a good place, thanks to the continuing work and care of many families.

Watch the *Times of Shrewsbury* for 2025 Outings!

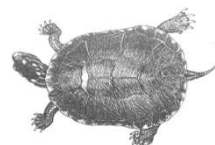
**How to join:** An SOC Family Membership is available to Shrewsbury residents or landowners who have completed the 2025 Membership Form, signed the Waiver, and paid the Annual Fee. A “Shrewsbury Family” is defined as a family or individual residing or owning property in the town of Shrewsbury. Family members and friends living at an address outside of Shrewsbury (who do not own property in Shrewsbury) are considered guests and must be accompanied by a SOC member to use the SOC waterfront area. A membership lasts from June 1<sup>st</sup> to May 31<sup>st</sup> of the following year.

If you wish to join as a new member for the upcoming season, please contact us at [ShrewsburyOutingClub@gmail.com](mailto:ShrewsburyOutingClub@gmail.com) for the forms. 2025 Membership Forms and Waivers will also be available at the Shrewsbury Town Office. Last year’s members will be emailed 2025 forms on May 3<sup>rd</sup>, 2025. Please be sure to add the SOC to your email contacts so that these forms do not go to spam.

Once all paperwork and payment has been received, your name will be added to the membership list posted at the Lake and given to the security guard. After June 1<sup>st</sup>, the membership list will be updated at the end of each week. You may be asked to leave if your name is not on the list.

To become a 2025 SOC member, please complete the **2025 Membership Form**, sign the **Waiver**, and submit these forms along with the **2025 Membership Fee of \$55** (payable to the **Shrewsbury Outing Club**) to:

Shrewsbury Outing Club  
c/o Chris Clarke, Treasurer  
4431 VT Route 103  
Shrewsbury, VT 05738



Thank you and have a happy summer 2025!

~Submitted on behalf of the SOC  
by Grace Brigham and Amy Thomas  
~Illustrations by Emmett Sirjane and Grace Brigham



Library News Submitted by Joan Aleshire

## CELEBRATING 50 YEARS & COUNTING

Monday 10 am to 12 pm

Tuesday 7pm to 9 pm

Wednesday 10 am to 5 pm & 7 pm to 9pm

Thursday 7 pm to 9 pm

Friday 10 am to 12 pm

Saturday 10 am to 12 pm

## STOP IN TO SEE OUR 50th ANNIVERSARY QUILT, REFINISHED FLOOR & NEW PAINT JOB!

Wonder if the Library has a particular book or DVD? Want to put a hold on an item, or renew one you've borrowed? Please visit [www.shrewsburylibrary.org](http://www.shrewsburylibrary.org).

To suggest a book to add to our collection, please contact DONNA SWARTZ for Children's and Young Adults' books ([donnaswartz44@aol.com](mailto:donnaswartz44@aol.com)) and Joan Aleshire for Adult Fiction and Non-Fiction ([joanaleshire@vermontel.net](mailto:joanaleshire@vermontel.net)). We can request books from other libraries on Inter-Library Loan, if federal funds are available. We will buy books depending on our budget and our collection's needs.

THE PAUSE on BOOK DONATIONS continues as we search for ways to handle books that haven't found homes. THANKS for your suggestions and your patience!

## COMING EVENTS:

Friday, May 9 @ 7pm: WILL PATTEN, Shrewsbury native, will read from and sign copies of his new book, *Rescuing Capitalism: Vermont Shows the Way*,

Saturday, May 31 @ 4pm: 50<sup>th</sup> ANNIVERSARY celebration! Please see our ad in this issue of the *Times*.

## SAVE THE DATE:

Saturday, June 28 @ 2pm: SANDGLASS THEATER presents *PUNTSCHI* @ the Russellville Schoolhouse.

## CONTINUING PROGRAMS:

Sunday, May 4 @ 4pm: WRITERS' GROUP. OPEN READING. Join us, bring a poem to read, or listen to what we've been up to! Please contact Penelope Weiss ([pw9@earthlink.com](mailto:pw9@earthlink.com)) or Joan Aleshire ([joanaleshire@vermontel.net](mailto:joanaleshire@vermontel.net))

Sunday, May 18 @ 4:30pm: FAMOUS BOOKS BOOK CLUB: We'll discuss Doris Lessing's *The Golden Notebook*. If you need a copy, please contact Joan: [joanaleshire@vermontel.net](mailto:joanaleshire@vermontel.net). Please note the later time, and attend the Shrewsbury Singers' Concert that afternoon at 3 p.m.

Sunday, May 25 @ 4pm: SCIENCE BOOK CLUB: *Best Science and Nature Writing 2024*, edited by Bill McKibben. Print and e-books available; please contact Margery Salmon: [salmonm@vermontel.net](mailto:salmonm@vermontel.net) if you'd like a copy.

## New Books include:

- \* *How Can I Help? Saving Nature with Your Backyard* by Douglas W. Tallamy: Simple, effective steps to take by the beloved conservation expert.
- \* *We All Live Here*, a warm-hearted new novel about an "unruly, blended family" by the insightful Jojo Moyes.
- \* *Uncharted: How Trump Beat Biden, Harris and the Odds in the Wildest Campaign in History* by Chris Whipple: An inside story by a veteran journalist.
- \* *Miracles and Wonder: The Historical Mystery of Jesus* by the scholar Elaine Pagels, author of *The Gnostic Gospels*.
- \* *Red Scare: Blacklists, McCarthyism, and the Making of Modern America* by Clay Risen: 20th century history with lessons for the 21st.

## New DVDs:

- \* *The Room Next Door*, directed by Pedro Almodovar, starring Julianne Moore and Tilda Swinton.
- \* *Conclave*, starring Isabella Rossellini and Ralph Fiennes.
- \* *Masterpiece: The Mirror and the Light*: Hilary Mantel's final novel in the *Wolf Hall* trilogy brought to the small screen.



Please join us on  
Saturday, May 31st 4-6 p.m.  
to celebrate the 50th Anniversary  
of the Shrewsbury Library

Panel Discussion with Longtime Trustees & Friends,  
Moderated by Cabot Spatz (Meeting Room)

Finger Food and desserts Reception in the Library!



# Shrewsbury Historical Society

www.shrewsburyhistoricalsociety.com

## First business meeting date

On Monday, May 5 at 5:30pm the first business meeting of the Society for this year will be held at the museum. Please come if you are interested in becoming a new member. Annual dues are due and can be paid for this year as follows: Single \$10, Family \$15, Contributing \$30, and Life Membership \$125 (single or couple). The Society uses the monies for supplies; mostly to purchase archival items and postage. The dues have remained the same since its beginning in 1971. Our mission is to preserve our past history and care for its future. As for the present we need your help as active members. The Society is also non-profit and all- volunteered.

## Museum doings

The Society's Museum will open to the public on Sundays only from July 6 to the last Sunday in October (26<sup>th</sup>). We are keeping the exhibit up about the three Shrewsbury men who are honored. It was introduced last summer and proved to be very popular.

The Society also has copies of the late Dawn D, Hance's history of Shrewsbury, "Shrewsbury, VT - Our Town As It Was" priced for sale at \$25. We have in our files information that might help you in searching for your roots. If you enjoy greeting people perhaps one day you might want to volunteer to take a turn at staffing a Sunday afternoon opening. Or, giving us a hand at spring cleaning the winter's dust; the active members are few and we sure could use more help in many ways. Especially when the Mountain School children visit. We are happy that member Gracie Brigham is our liaison between us and the school. For more information about what we do,

please look us up in the Town Report for year 2024 that was mailed to you recently.

The Society has been exploring the possibility of a matching grant for help in restoring the many windows of the building that are over 100 years old. The SHS must keep the building in good repair, and we have done much so far, but this project is quite overwhelming.

## Interesting call

On April 7 President Brian Winkler met with Travis Van Alstyne of South Burlington in response to his call asking about the possibility of seeing photos of the Carrara's farm visitor, a moose, and Jessica, a cow. He is a film animator and needs more info for a future project. We have many items pertaining to this event and Van Alstyne took information and said the SHS would be mentioned on the list of people involved. From what I heard; he was very happy with his visit. One of his projects is featured on YouTube with the following link: <https://www.loveofthelandfilm.com>. It is a true story about a VT farmer, named Romaine Tenney. It broke my heart.

## Remembering Judy

Former member/friend Judy Landon passed away recently and I want to mention that she was thoughtful in providing special bouquets of flowers for the various events at the museum. It was through the graces of the Landon family that the SHS was able to visit the historical cemetery that is on their land off Route 103 for photo taking. We were chased by the many ducks that protected their pond, but somehow we made it. I also remember that one of many organizations went to the cemetery to do a clean-up, more than a few years back. Our sincere condolences to the Landon family.

~Submitted by Ruth Winkler



**Discover horses  
from the ground up!**

**Jennifer McDermott**

Balanced Seat for all Disciplines

Centered Riding, Instructor

Therapeutic Riding

PATH, Int'l, CTRI & ESMHL

&

Experience the deep connection  
of working at liberty!

Over 35 years of experience.

203 434 9505

jamequine.com

## TRACTOR WORK

For all your loading, lifting,  
digging, grading, grappling,  
winching & brushhogging needs.



Rob Littmann  
802-774-8835  
Shrewsbury, VT

Front Loader: Bucket, Grapple,  
Pallet Forks, Bale Spear

Backhoe: 16" Bucket & Thumb

Brush Hog, Forestry Winch,  
Grading Blade, York Rake,  
Pallet Forks, Bale Spear

# SHREWSBURY SINGERS

*present*

## *Sínging on a Sunday Afternoon*

*Sharing songs we love to sing,  
old & new, from near & far*

~~~~~

May 18, 2025 @ 2:00pm
~Russellville Schoolhouse~
(18 Crown Point Road, Shrewsbury)

~Free Will Offering ~

For more information: Licia Gambino
(802) 492-3792 hamgam@vermontel.net

The Shrewsbury Community Church



Compiled by Sue Ransom-Kelley

What to do with all of the candy?

The Easter and the Passover holidays are always intertwined as a few days after Palm Sunday both religions celebrate a form of Passover. A rite of spring so to speak. A few days ago, I got so excited to see that a bunch of places have pansies for sale. When I bought my house years ago there was a small cement planter by the front door. To this day each year I start my flower planting by filling it with pansies

The essence of the Easter message is about love overcoming fear, despair and hate; and love overcoming death. These are challenging and uncertain times that we once again live in. What centers us as we get buffeted by the chaos that is around us in not just our country but the world? It always helps to each day have some routine that focuses on the small stuff that is really the big stuff: Connections; Compassion; Serving; Sitting, just observing and being patient. Nature is an easy way for many of us to just sit, observe and to be. It can be a place of quiet renewal, reflection, and gratitude of what is in the moment. To be able to just sit and be; to be comfortable with oneself just as we are right now. No judgment. What a much stronger place to then start our day from. I just know that I am in a better place if I can act from a place of being connected to things bigger than myself, to my community, and to my God, however I want to define God and community. We are meant to be and to live in a loving connection with all those around us. We all are truly blessed.

As for the candy this year I didn't buy any and didn't miss it. Not my priority right now. Go in peace with the joy of spring in your heart and in your step. ~Pastor Karen



The kids had fun painting blue bird houses in anticipation of the blue birds return! They did an awesome job baking cinnamon rolls for Easter refreshments! They will be doing a special project for Mother's Day. Join us any Sunday 10:30-11:30 at the Meeting House upstairs to participate in nature themed crafts, stories and sharing. Call Cortney Allard 802-683-7852 or Anissa Park 802-779-2248.

Special Thanks to all who came out to support us at our Annual Pancake Breakfast! Thanks to the Smith Family at Maple Crest Farm for providing the delicious Amber Rich Maple Syrup and scrumptious pancake mix!

Thanks to our hardworking crew: Cortney Allard, Karen Braeutigam, Philippe & Linda Ducrot, Steven Nicholson, Anissa & Isabelle Park, Roxanne Ramah, Sue Ransom-Kelley, Earl, Julianne, Eliza, Mason & Silas Sharrow, Joanna & Allison Stone. We raised much needed funds for our Holiday Community Sharing Project to purchase gift cards for kids for basic necessities and grocery cards for families!

Help assemble kits for Church World Service

The Community is Invited to join us as we work to make a difference! We will meet Sunday May 18 at 11:15 am upstairs at the Shrewsbury Meeting House. We will be assembling kits for Church World Service. The kits will be distributed in areas where disasters occur. This past year CWS has responded to wildfires in California, Hurricanes in the Southeastern United States, and power outages in Ohio during extreme cold temperatures. We will need help putting together kits or donating items for the kits. Money can also be donated to help us purchase items needed.

Hygiene Kits:

- 1-gallon resealable plastic bag
- Washcloth
- Toothbrush (in original packing)
- Fingernail or toenail clipper (packaging removed)
- Bath-size bar of soap (in original packaging)
- Travel-size deodorant (3.4 oz. or less, non-aerosol)
- Travel-size lotion (3.4 oz. or less, fragrance-free, NEW only)
- Travel-size shampoo (3.4 oz. or less, NEW only)
- Travel-size toothpaste (3.4 oz. or less, expiration date of 1 year)
- Sturdy wide-tooth comb (6" minimum teeth)

CWS Kids Kits:

- One box of 12 colored pencils
- One 2 pocket folder
- One glue stick.
- One pair of blunt scissors removed from the package (rounded tip, only).
- One 70-page count spiral bound notebook (no loose-leaf or filler paper).
- One 30-centimeter / 12" ruler.
- One hand-held pencil sharpener.
- One large eraser (no pencil cap erasers).
- Six new, unsharpened pencils with erasers.
- One box of 24 crayons (only 24).
- One 12"x14" to 14"x17" finished size cotton or lightweight canvas bag with handles, no logos, reusable shopping bags or backpacks).

Optional item: One handmade Make Your Own Pencil Pouch –Sew Much More or store-bought pencil pouch.

CWS Period Packs:

- One 1-gallon size re-sealable bag.
- Two 2oz bottle hand sanitizer.
- Three 4-gallon bathroom trash bags.
- One travel pack of Wet Ones.
- 5 regular Tampons.
- 5 super absorbency Tampons.
- 12 Pads (Unscented. Long super ultra-thin).
- Bath-size soap (3 oz. bar or larger. No Ivory or Jergen's soap. Do not remove from packaging).
- One pack of flushable wipes (Unscented. 42 count).
- Six fragrance-free laundry sheets (placed in small, Ziploc bags)

Shrewsbury Community Church Calendar

Sunday May 4, 10:30: Fun Day program for kids. Worship Service and Holy Communion led by Pastor Karen Braeutigam.

Sunday May 11, 10:30: Fun Day program for kids. Worship Service led by Pastor Karen Braeutigam.

Sunday May 18, 10:30: Fun Day program for kids. Worship Service led by Pastor Karen Braeutigam.

Sunday May 18, 11:15: Meet to assemble kits for Church World Service Upstairs Meeting House.

Sunday May 25, 10:30: Fun Day program for kids. Worship Service led by Pastor Karen Braeutigam.

Tuesday May 27, 12noon-2:00pm: Prayer Shawl Group Meeting Upstairs at Meeting House. Come and knit or crochet! Refreshments will be served. Don't know how? Come and we will teach you! Call Roxanne with questions 802-492-3675.

Community Food Shelf

Free Community Food Shelf at the Library in the front entry way. Those in need are welcome to help themselves any time the Library entryway is open. Limited hours are: Mon 10am-12noon; Tues 7-9pm; Wed 10am-5pm and 7-9pm; Thurs 7-9pm; Fri 10am-12noon; and, Sat 10am-12noon.

Food Delivery and Assistance If you are unable to get to the Food Shelf at the library in Shrewsbury, we will deliver groceries to you. If you need items which are not available on the shelf we can provide grocery gift cards. Call Karen at 802-558-5991 or Sue at 802-779-4360 or 802-492-3738.

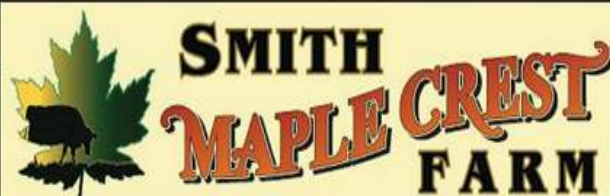
Community Needs

- Wedding, Funeral or Memorial Service Requests: Contact Donna Smith 802-492-3367; or Sue Kelley 802-492-3738, 802-779-4360
- Community Helping Hand Requests: Contact Donna Smith 802-492-3367; Sue Kelley 802-779-4360, 802-492-3738; or Karen Lorentz 802-558-5991. Shrewsbury residents experiencing financial hardship. Assistance can be given for basic needs (food, heating, gasoline, etc). If you or a neighbor are in need, please let us know!
- Pastoral Care, Home, Hospital Visitation, Outreach Requests: Contact Roxanne Ramah 802-492-3675 or Ruth Kinne 802- 775-5318.



May 26, 2025

Small Farm Flavor & Quality!



VT MAPLE SYRUP & GRASSFED BEEF

Vermont Maple Syrup	Locally Sourced Pork	Grassfed-Finished Beef
Maple Cream	Chicken	Ground Beef
Maple Candies	Eggs	Steaks & Roasts
Pancake Mix		All kinds of Ribs
Marinades & Spices		Briskets & Sausages

OPEN: WED THRU MON 10 AM - 5 PM

From: Rutland: Left off VT RT 103 just 2.5 miles - on the right



From: Cuttingsville: Just 2.1 miles up Town Hill Rd, right on Lincoln Hill Red Barn on right

2450 Lincoln Hill Road, Shrewsbury VT. 05738

SmithMapleCrestFarm.com

802-492-2151

maplecrest.info@gmail.com

We ship syrup all over the USA

WIRENUTS ELECTRICAL LLC

bbates@vermontel.net

**REBECCA BATES
LICENSED
ELECTRICIAN
802-492-3406
802-353-4376**

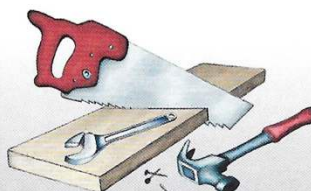
D. F. LEIN HANDYMAN SERVICE

Rutland VT

Dale F. Lein

704-728-7442

dflein@yahoo.com



**Fully Insured
Home Repairs
Woodworking Projects**



SHREWSBURY MOUNTAIN SCHOOL

Important Dates:

5/5-5/9: Teacher Appreciation Week

5/7: 6th grade Step Up Night at MRU 5pm

5/9: 6th Grade Step Up Day visiting MRU

5/26: Memorial Day - No School

6/6: Field Day (Rain Date 6/9)

6/10: SMS All school Music Concert and 6th grade Graduation
6:30pm



SMS Family Dance was Friday, April 11 and many came out to celebrate Spring and dance together! Huge thanks to the SMS PTO and DJ Brett!

New Picnic Tables for the Playground

The SMS Playground Committee is thrilled with the first addition to the SMS Playground in anticipation of our complete renovation for the 2025-2026 school year. These metal picnic tables were donated by the Kiwanis Club and were put together by our Mr. Dave. Thank you for all your support, SMS PTO!



Summer Camp Opportunities!

MRUUSD Summer Camp: see our website!

Rutland Mint: <https://rutlandmint.org/calendar>

Wallingford Summer Camp: call Sandi Switzer for information
(802)446-2872

Elementary Transfer Program - The application deadline for school year 25-26 in-district elementary transfer (among CES, SMS, TES and WES) and for the MRUUSD/Ludlow & Mount Holly elementary transfer program is May 15th. Applications are available on our website and can be returned to the main office at school. <https://www.mruusd.org/elementary-transfer>

~ Kristin Cimonetti, Principal

802-786-3995 kcimonetti@millriverschools.org



Pre-K fun
with
Miss Melissa!



Thrive Center
OF THE GREEN MOUNTAINS

Serving the Community
with Excellence and Compassion
Since 2000

Chiropractic Care • Applied Kinesiology
Therapeutic Massage/Bodywork
Holistic Health Education • Nutritional Supplements
Coaching • Worksite Wellness

Joseph P. Donohue, DC Lisa Marie Donohue, MA, LMT

68 South Main St, Wallingford, VT • 802.446.2499 • www.instagram.com/thrivecentervt



Spring Lake Ranch therapeutic community

Ramp It Up!

Spring Lake Ranch's 5K to Support the Shrewsbury Volunteer Fire Department

On Thursday, May 8 at 1:00pm, Spring Lake Ranch will host the fourth annual Ramp It Up! 5K trail run/walk to raise funds for a local charity. This year, residents and staff voted to support our very own local fire department, where Ranch staff member Hal Niblack volunteers!



Ramp It Up! festivities first began last month with a T-shirt design contest. Residents and staff were asked to submit original artwork, then our community voted for our favorites. This year's winner was Erica Jeon, a Program Coordinator who moved here from L.A. to live and work with residents in a supportive capacity. She is also an integral part of our Shop Crew, handcrafting everything from cutting boards to tables and chairs.

Erica's fun and vibrant Ramp It Up! design is now available for purchase in a wide variety of shirt colors in our online shop. Most of the event's donations are traditionally generated through these shirt sales. This year, in support of Shrewsbury's brave volunteer firefighters, we are also selling stickers and bandanas with Erica's design. Buy Ramp It Up! Items at www.springlakeranch.org/rampitup.

As a nonprofit, Spring Lake Ranch receives donations that provide financial aid and programming for residents. Ramp It Up! is our way of giving back and encouraging a spirit of generosity among Ranchers. Plus, it is just a fun celebration and a good way to get outside during the early days of spring when the ramps are emerging from the ground (hence the origin of the race's name).

Are you wondering how you can get involved?

If you are up for some exercise, register to join our 5K by emailing rosem@springlakeranch.org. We are asking that participants make a minimum donation of \$10. The route starts at the Main House, where you can sneak a peek at some early Capital Campaign improvements. The 5K path will take you up the hill to the southeast ridge of Spring Lake, then through the woods and back down to the finish line. You can run, walk, or even saunter. Just be sure to make it back to the Main House for snacks and celebration.

To donate or buy this year's Ramp It Up! merch, go to www.springlakeranch.org/rampitup. All proceeds from sales of stickers, shirts, and bandanas will be donated to the Shrewsbury Fire Department.

You can follow us on social media and share our Ramp It Up! posts. Your friends and family might want to snag some merchandise to support our firefighters too. Thanks in advance for your support. We hope to see you wearing your Ramp It Up! swag around town this year.

~Article by Rose McCracken



88 Lottery Rd Shrewsbury VT

2025 SHREWSBURY MEETING HOUSE SUMMER CONCERT SERIES

Please bring a Free Will contribution and your own seat.
Food vendors on site TBA. All proceeds go to the musicians and the historic Shrewsbury Meeting House.
For more info, please call 802 558-2708
Follow us on Facebook: Shrewsbury Meeting House Concert Series

ALL Concerts are on FRIDAYS AT 6 PM
(Indoors if raining)

June 13	Stockwell Brothers
June 27	Mojo Birds
July 11	Gaslight Tinkers
July 25	Trio of Aether: Bow Thayer, Krishna Guthrie, Steve Ferraris
August 8	Yankee Chank

RIVERWOOD LAWNCARE, LLC

FREE ESTIMATES

FULLY INSURED

SPRING CLEAN-UP TIME!!!!

PLOW DAMAGE REPAIR/CLEANUP

REGRADE GRAVEL DRIVES/PARKING AREAS

POWER/HARLEY RAKE

STUMP GRINDING

DETHATCHING, MULCHING

MOWING, TRIMMING

POWER BROOM, LEAF CLEAN-UPS

BRUSH HOG/WET AREAS

802.770.0433

riverwoodlawncare@gmail.com



Shrewsbury Conservation Commission

Trail Camera Picture of the month



The motor in the woods!

'Who's running a motor in our woods?' Many of us have been fooled by the thumping sound of a ruffed grouse on his drumming log. I was able to find a drumming log deep in our forest and set up a trail camera. I was surprised to learn that some days the grouse started drumming before dawn and continued into the late morning. As you can see from my pictures, this is a huge expenditure of energy!



From Cornell Labs, all about birds, I found this description on how the sound is made.

"Ruffed Grouse drum in order to claim territory and advertise to females. They typically stand on a fallen log, brace with their tail, and flap their wings vigorously. It's tempting to think that the grouse is actually beating its wings against the log to create the sound like a drummer playing a kettle drum.



But the truth is even more impressive. The wings don't strike anything at all, but they move so quickly through the air that they create a momentary vacuum. As the downstroke ends and upstroke begins, air rushes in to fill the vacuum and makes a low thump, sometimes compared to a miniature sonic boom or thunderclap. It's a complex skill to learn—young males have to practice, and may make only erratic sounds for a while until they master it.



A grouse's drumroll begins slowly, with 2–3 widely spaced beats that you might not at first recognize as part of a series. Then the thumps start to accelerate until they blend together into a low buzz. The whole display takes about 10 seconds, during which the grouse will beat his wings up to 50 times, according to Birds of the World. "

~Submitted by Linda Shelvey

If you have a picture of a track or wildlife capture to share, please contact: Linda Shelvey, lpurdyshe@gmail.com.

What If?

If I had a poem to share
This might be what I'd write
I'd wish we didn't need to beware
Of what is not so right

I'd wish we'd only need
To pay attention to
All the love we'd feed
To fill up me and you

I'd love to just want to think
That all of humankind
Could briefly close our eyes and blink
And this is what we'd find

We'd find that every earthling
That roams this planet earth
Would make the others' hearts sing
About each others' worth

by Thomas Hartigan



Symptoms of Tickborne Diseases

Symptoms of tickborne diseases include:

- **Lyme disease** - fever, headache, fatigue, and skin rash that looks like a bullseye. If left untreated, infection can spread to joints, the heart, and the nervous system.
- **Anaplasmosis** - fever, severe headache, muscle aches, chills and shaking. Anaplasmosis doesn't cause a rash. Illness occurs 5 to 21 days after exposure to an infected tick.
- **Babesiosis** - when symptoms occur, they typically begin one to four weeks after a tick bite and can include fever, chills, sweats, headache, body aches, loss of appetite, nausea, or fatigue.

The best way to prevent tickborne diseases is to avoid places where ticks thrive, use a safe recommended repellent, dress protectively and check your clothes and body for ticks. Get a good pair of tweezers for your first aid kit for removing ticks from your skin.

~ Community Health Communications

Please Don't Poison Their Dinner

Come and hear about the research and learn more about alternative solutions to the use of poison to kill rodents.



Shrewsbury Library
98 Town Hil Rd
Friday May 16
7-9pm

Learn more about a serious problem that is killing and harming our raptors and other wildlife and even possibly your dog. The issue? ARs or anticoagulant rodenticides.

This new generation of poisons is used to kill rodents and most often come as bait placed in containers that rodents

access. They cause internal hemorrhaging and are really dangerous to non-target animals who consume poisoned prey.

The Shrewsbury Conservation Commission has invited guest speakers from VINS and VT Fish and Wildlife to share their experiences with the harm these new ARs are causing and to share research that is monitoring the prevalence of

these poisons in Vermont wildlife, which, for example, have demonstrated that 94% of our fishers have one or more of these poisons in their bloodstream! There is also concern about these poisons seeping into our water supplies. And many of these new ARs are readily available for purchase to unknowing homeowners who are just trying to get rid of mice or rat infestations.

We anticipate attendance from others outside of Shrewsbury who have expressed interest in hearing these speakers too, so we may need to move the venue to the Shrewsbury Meeting House, 88 Lottery Rd.

Please help us determine audience size and RSVP to Weezie at our new gmail address:
conservationcommission@shrewsburyvt.org



PVF Services LLC
 Excavation, Trucking, driveway repair, site prep, building removal, brush grinding and much more!

Neal and Chad	1368 Lincoln Hill
Cell 802 236 8105	Shrewsbury Vt, 05738
Office 802 492 3364	sharrowmaple@gmail.com

Greetings Shrewsberries!

We are a family of three looking for a permanent home here! Stephen works with local non-profits (including SAGE) and represents Shrewsbury on the Mill River District School Board. Oana is a health care provider in Rutland. Our little one is excited to attend SMS in a few short years...

We would love to create our home in Shrewsbury either by purchasing a house or a piece of land. We envision a 2 or 3 bedroom home on 5+ acres, eventually with animals and fruit and nut trees! If you know about places that may be coming on the market or land that could be subdivided out, we'd love to talk with you. Please reach out to

802-492-3106 or

stephen.abatiell@gmail.com.

~Stephen, Oana, and S



A Great Scavenger Hunt for All Ages! Something for everyone to find and explore!

The Shrewsbury Conservation Commission invites you to join us at

Jockey Hill Farm
at the end of Coldham Road
Saturday June 14 at 9:00am

Come ready to tromp in the woods and on trails searching for items on a pictorial list. Fun for the whole family, and younguns' and oldsters too. Bring bug repellent, water, wear hiking shoes, and take along a smartphone and binoculars if you have them.

You'll be sure to find things that you didn't even know about before and get a fresh appreciation of natural world. Rain (unless torrential) or shine.



Know what this is?



How about this?

We can accommodate a large group so reservations not required but are helpful in planning, so RSVP if possible to Weezie at conservationcommission@shrewsburyvt.org (802)



Early May is bringing mulch madness to the Shrewsbury Mountain School Garden! In the coming weeks students will flatten cover crops and prep the garden beds with compost and mulch. Scott Courcelle of Alchemy Gardens and Ryan Fitz-Beauchamp of Evening Song Farm will continue seeding and potting up starts that students will plant in late May and early June before school lets out, ensuring a bountiful school garden going into summer.

You don't have to wait for the acclaimed summer concert series to have your spirit lifted and your toes-a-tapping, music is in the air this spring at the Russellville Schoolhouse! Our next community music jam will be on May 10 at 7pm. All are welcome to join in on the fun. If you can't make it on the 10th, come on down May 18 at 2pm to catch a concert by the Shrewsbury Singers!

SAGE, Shrewsbury Agricultural Education & Arts Foundation, has a mission to support and promote sustainable farming and other arts that nourish community life. For more information about SAGE: contact Stephen Abatiell at educate.sage@gmail.com, Joan Aleshire at 492-3550 or visit www.sagevt.wordpress.com. Follow us on Facebook for up-to-date event details at ShrewsburySAGE and find our sustainability and arts videos at www.youtube.com/@sagefoundation.

~Submitted by Steve Abatiell



SNO-BIRDS NEWS

The season ended quite quickly this year. We always hope to be able to ride right up to April 15 when the season ends. This season the last grooming was March 13 and most riders were done at that time. The last text I received from a rider that said they were out riding was on March 29, and that person rode 200 miles in our area that night! So you can see that there are some real die-hard riders out there.

In years past I have groomed the last week of the season, and to close the gates, I had to shovel to close them. Not this year though. This year we groomed about 800 miles which is about 1/2 of what we would like to do. We are hoping that next season will be better. We have the gates closed and the signs picked up. Now we are into the end of the season paperwork and putting in for any grants we are eligible for. There are a lot of behind-the-scenes things that need to be done at this time.

Getting the paperwork in for the 50+ foot bridge we have to replace this year is high on the list. That is going to be a big project with the steel I beams and everything else. We are checking the rest of the bridges for the need to replace them. They are all for the most part getting old--but aren't we all? The last thing we need is to have the groomer or a piece of equipment go thru one of them while we're working on the trails!



Bridge top side (left) and underside (above)

The photo that I put in this article shows that this bridge needs replacing. The good thing sleds do not weigh a lot and the Tucker's weight is spread over a long 40-foot span. None of our bridges are rated for wheeled vehicles nor do they have permission to use them.

If anyone is interested in our club check out our website, ShrewsburySnoBirds.org, or our Facebook page. We post club updates throughout all the seasons, and I will mention club activities here also. Reach out if you have any questions. Snow is melted so have a nice spring! ~Article by Roy Arthur

NATURE'S TURN, LLC

Gerry Martin

Artistic & Functional Wooden Bowls



Vermont Crafts Council
Open Studio Weekend
Saturday & Sunday

MAY 24 & 25, 2025

10am -- 5pm

998 Lincoln Hill Road,
Shrewsbury, VT 05738
(802) 492-2244

COMMERCIAL/RESIDENTIAL

DRIVEWAYS



EXCAVATING
47 RAILROAD DRIVE
N. CLARENDON, VT 05759
(802) 558-3275

COMPLETE SITE WORK

SEPTIC SYSTEMS

Upcoming Events

March 26th - April 19th Spring Raffle is BACK! ♦

Enter for a chance to win GIANT chocolate bunnies or Wally's Corner Mystery Baskets. Tickets available for purchase at Wally's Corner.

April 13th 2p-3:30p Learn Embroidery with Lauren 🌸

Our host, Lauren Escott, will be teaching embroidery for beginners. Any skill level is encouraged to join.

May 31st 10am-11am Let's Pot Succulents 🌿

Learn tips for keeping succulents thriving in your indoor or outdoor garden. We'll mix soil & plant succulent cuttings in mini stoneware planters made by Paula Van Valkenburgh of Shrewsbury.

Visit us in The Olde Barnyard 5444
VT 103, Cuttingsville VT 05738



Hours: Wed-Sun 11am-6pm

Contact Us: (802) 772-0507
hello@wallyscorner.com

www.wallyscorner.com

Find us on YouTube,
Instagram & Facebook

ROAST BEEF SUPPER SATURDAY, JUNE 14, 2025

At the Odd Fellows Hall
37 Lake Street
Belmont, VT 05730
Starting at 5:00pm

Benefit Mount Holly Volunteer Fire Department

ROAST BEEF SUPPER
Mashed Potatoes, Gravy, Vegetables, Rolls and
Desserts

All You Can Eat – Family Style

Take outs Available Starting at 4:45pm

Adults \$15.00
Children 12 Yrs. & Under \$8.00

More Info Call 802-259-2460

Join us at the Shrewsbury Library Friday, May 9 at 7pm

Will Patten comes back to Shrewsbury
to talk about his new book.

RESCUING CAPITALISM VERMONT SHOWS A WAY



In the hills of Vermont, capitalism thrives
while human and natural resources are
nurtured and protected.

But across America, these resources are
collapsing as corporate profits soar.

Yet this book argues that only democratic
capitalism, once rescued from its hijackers,
will have the agility, scale, resources, and
motivation to halt that collapse.

WILL PATTEN

Will went to school through 7th grade in the
Cuttingsville School.

Beardmore Excavating

(802) 342-3507

Robert Beardmore, Jr.
beardmoreexc@gmail.com

5256 VT-155
Belmont, Vermont 05730

Rutland Youth Theatre Presents Mary Poppins



There will be three shows at the Paramount Theatre in Rutland: Friday, May 9 @ 7pm, and Saturday, May 10 @ 1pm & 7pm. Tickets are adults: \$15 + tax/fees, and children under 18/Seniors over 65: \$12 + tax/fees.

Mary Poppins is an enchanting mixture of irresistible story, unforgettable songs, breathtaking dance numbers and astonishing stagecraft.

The jack-of-all trades, Bert, introduces us to England in 1910 and the troubled Banks family. Young Jane and Michael have sent many a nanny packing before Mary Poppins arrives on their doorstep. Using a combination of magic and common sense, she must teach the family members how to value each other again. Mary Poppins takes the children on many magical and memorable adventures, but Jane and Michael aren't the only ones upon whom she has a profound effect. Even grown-ups can learn a lesson or two from the nanny who advises that "Anything can happen if you let it."

To Purchase Online:

<https://www.paramountvt.org/event/rutland-youth-theatre-presents-mary-poppins/> or, <https://www.paramountvt.org/BoxOfficeOpenforpurchases,Fridays,11am-6pm,andaheadofallshows.Comeoutandrevelinthetalentsofourlocalyouth!>



2450 Lincoln Hill
Shrewsbury VT
802-492-2151

Small Farm Flavor & Quality !

- * Sale on Beef Tri-Tips !!!
(while they last)
- * Bakers Doz of ground beef
(13) 1 lb Packages \$96.
- * VT Maple Syrup all grades
1/2 Gal \$30 Qts \$17
- * Local Eggs

Thank you for supporting our small farm !!



RAINBOW RIDING CENTER NEWS

Rainbow Riding Center is getting ready for another season of lessons, but first there's work to be done. Volunteers and staff will be getting the barn, ring and fields ready, and walking the trails to see how well they withstood winter storms and spring rains. Soon the horses will arrive, and instructors and staff will start getting them ready for their summer duties after a long winter lay-off.

The season kicks off with our Annual Volunteer Orientation, Sunday, June 8 at 10-12 noon. Orientation is for anyone who would like to become a volunteer or wants to know what volunteering at Rainbow is all about. For information about opportunities to volunteer or paperwork contact janetupton@rainbowridingcenter.org Volunteer applications can also be downloaded from our website.

This season we will only be holding two sessions of lessons. The first runs Tuesday, July 8 through Friday, August 15. The second is Tuesday, September 9 through Friday, October 17. For information about lesson days and times email programs@rainbowridingcenter.org Applications can be downloaded from our website.

At Rainbow Riding we strive to meet the needs of every individual that participates in our programs, mounted or unmounted, regardless of their ability to pay. For more information about Rainbow Riding Center and our mission please visit our website: rainbowridingcenter.org and follow us on Facebook or Instagram @rainbow_riding_center and LinkedIn! Contact us at programs@rainbowridingcenter.org or 802-236-2483 to inquire about our programs and lessons.

~Submitted by Janet Upton



It's Springtime when competing turkeys show off their full glory!

Photo by Lily French



TIMES OF SHREWSBURY

ONLINE in Color

<http://www.shrewsburyhistoricalsociety.com>
and
www.shrewsburyvt.org

BRANCH BROOK EXCAVATING LLC

Driveways / Harley Raking / Ditches and Drains /
Land Clearing and Reclaiming / Stump Removal /
Retaining Walls; New and Old / Ponds/Power, Gas,
and Water Line Burial/ General Dirt Work



Benjamin Turco

1269 Branch Brook rd

Mount Holly, VT 05758

Phone: (802)770-8964

branchbrookexcavating@gmail.com



Bone Builders

Tuesdays and Thursdays

November-April: 10-11am

May-October: 9-10am

at the Meeting House on Lottery Road

Free weights and instruction!

Join this friendly group to improve your
Bones, Balance, and Strength

More Info: Ginny Buckley (802) 492-3504

Tuesday, May 5:

Bone Builders summer hours begin 9am-10am



The Shrewsbury Library's 50th Anniversary Quilt

"Around the World" queen size quilt is on display at
the library. A drawing will be at the library's Street
Dance/Dinner in the summer.

Raffle tickets can be purchased
at the Shrewsbury Library or at Pierce's Store
1 ticket -- \$5.00 6 tickets -- \$25

Bike Safety

Make sure your saddle
is at the right height.

Use a bell to
warn people
when you are
passing by.

Always use lights
if it is dark.



Keep your tyres pumped up.

Annual Bike Safety Day

The Wallingford Rotary Club will host our Annual Bike Safety
Day on Saturday May 10 from 9:30am to 12:30pm. This year
we will return to the Wallingford Elementary school parking lot!
There will be:

- Free helmets with a fitting,
- Free bike inspection and
- Bike safety course
- Free hot dogs and ice cream
- Plus raffle prizes

Families from Wallingford, Shrewsbury, Tinmouth and
Clarendon are welcome to participate. We hope to see you
there on May 10.



Mother's Day

May 11, 2025



444 Tin Shanty Road, Shrewsbury, VT

Country Estate on 124 Private Acres

BEDROOMS/BATHROOMS

7/5.5

LIVING AREA

6,415 Sq. Ft.

ACREAGE

124+/-

PRICE

\$2,250,000



Gail Beardmore
Gail.Beardmore@EVrealestate.com



126 Main Street, Ludlow, VT 05149 +1 802-975-0338
okemo.evrealestate.com



Mendi Michael
Mendi.Michael@EVrealestate.com

©2025 Engel & Völkers. All rights reserved. Each brokerage independently owned and operated. Engel & Völkers and its independent License Partners are Equal Opportunity Employers and fully support the principles of the Fair Housing Act.



PIERCE'S STORE

802-492-3326

www.piercesstore.com

Hours: 8am to 6pm

Update From Pierce's Store

Save the Date:

Beer Tasting & Mexican Food

**Friday, May 23 @ 4pm -- Memorial Day Weekend
Served in our garage and lawn as a kickoff to summer!**

Featuring a selection beer new to Pierce's shelves perfect for summer enjoyment.

New Non-Alcoholic Wines and Spirits

Hollow Leg Albarino & Cabernet Sauvignon - \$16.59

The Pathfinder Hemp & Root zero proof spirit - \$33.99

Ghia non-alcoholic cocktails: Original Spritz + Lime & Salt - 4 pk - \$17.95

Check out our moved wine shelving. Many new bottles are coming to these shelves.

Introducing a 10% 12 bottle discount on wine for all Co-op members.

Beautiful Tulips from Blume VT in Clarendon: \$13.99 /bn

This Month's Featured Products:

Organic Asparagus - 5.49 / bn

Fresh Organic Medjool Dates - 11.99/lb

Les Trois Petit Cochons Paté de Campagne terrine - \$9.99

North Country Smokehouse Bratwurst - \$7.99

Shrewsbury's Blueberries Freeze Dried Blueberries - 3.99 / jar

Dried Mango, Apricots, Ginger, Cranberries, Raisins

Maine Beer Co. Lunch

Zero Gravity & Harpoon Variety Packs

Red Hen Bread Every Wednesday Afternoon!

Organic Rogers Milk and Butterworks Farm Cream!

Many more new Products incoming!



Pierce's Store Easter Egg Hunt participants by garage door

Activities at Pierce's Store

On Friday, April 18 we enjoyed a wine tasting where several varieties of Vermont from Brattleboro-based Vermont Vermont were sampled. Koby Shwayder, the founder of Vermont Vermont, was present to explain each variety and to pour the samples. Vermont Vermont is now for sale in the store. To close out the evening Wine, Beer, Pizza and conversation were enjoyed after the tasting in the garage.

We held our second annual Easter Egg Hunt on Saturday, April 19 and the turnout was just right. Hot Chocolate and Cider were enjoyed during the event, and prizes were handed out in the garage. Thankyou Larry Abelman for organizing and running the event. Special thanks also go out to the Moody's for providing Easter Eggs and Prizes, and to Brown's Cider from Castleton for the cider. This year we had kids six and under on the far side of the road and the older kids on the store lawn. Our Golden egg winners were Chere Wolfe on the young side and Kayla Carrara on the older side. Kayla shared her Golder Egg with Marianne McCullough. By the way - after the event, the remaining adults found 5 eggs the kids missed - adults just seem to know where to look.

All in all, the Friday tasting and Saturday Easter Egg Hunt provided a great start to the season.

In other news, if you haven't been to the store in a while (and why not) come on in and take a look at what we have. Harry and Elena have the store nicely stocked and are preparing baked goods, sandwiches and other goodies on a regular basis in preparation for our summer season. For regular updates on upcoming store events like wine tastings, and for store specials check out our website piercesstore.com And, If you have some free time we're always looking for volunteers, just let us know.

~Article and photos by Ed Sawyer for Pierce's Board of Directors



Golden Egg Winner Chere with her parents



Golden Egg Winner Kayla and Marianne

The Times of Shrewsbury
PO Box 373
Cuttingsville, VT 05738

PRESORT STD
US POSTAGE PAID
SHREWSBURY, VT
05738
PERMIT NO. 2

To: Postal Patron

Donors are recognized for the remainder of the calendar year in which their donation is received. The *Times* is mailed to all residents of Shrewsbury and is also available online. The cost of printing and mailing is made possible through advertising and donations and are very much appreciated, but are not tax deductible. Donations can be made to: *Times of Shrewsbury*, P.O. Box 373, Cuttingsville, VT 05738. **THANK YOU!**

Marti Andersen
Gary Arthur
Roy & Cindy Arthur
Nate & Angela Bailey
Steve Banik & Virginia Gundersen
Randell & Dianne Barclay
Michael and Elizabeth Bedesem
Nancy Bell
Sara Biddle
Rich & Cynthia Biziak
Laura Black
Karen Braeutigam
Kristi & Sandy Bragg
Viginia & Dan Buckley
John & Linda Calotta
Christina Clarke
Peter & Theresa Clarke
Charleen Cole & Ed Garrow
Marilyn Dalick
Sally Deinzer
Philippe & Linda Ducrot
Stan & Louise Duda
Lizzie & Wayne Emmons
Nils and Pamela Erickson
Gene & Kathy Felder
Liz Flint
Todd Frederick & Michelle Greene
David & Jo Fretz
Scott Garren & Heather Shay
Jonathan Gibson & Eliza Mabry
Rick Gile & Sue Brown
Mark & Carol Goodwin
Pam & Peter Grace

Robert Greenwald
Barry & Barbara Griffith
John & Tamako Guidry
Carole Cook Haas
John & Betty Heitzke
Connie & Bob Hoelscher
Carmine Iannace & Rita Gyls
Martha Herbert Izzi
Diane Jakobsen
Jack & Betsy Jesser
Ellen Jorgensen
Martin & Julia Kimmig
Lisa King
Michael & Angie Lauri
Ed & Clare Mangine
Gerry & Chryl Martin
Paddy and Alice Martin
Stephen & Patricia Martyn
Taffy Maynard
Lynn McDermott & Becky Bates
Jeff & Pam Monder
Moody Family
David & Georgina Mosher
Jack & Joan Mulqueen
Ray & Cheryl Noble
Trish Norton
Allan Patrick
Fran Patten
Jack & Sharon Perry
Ken & Coral Petretti

Bob & Susan Quinn
Roxane Ramah
Melissa Reichert
Rainbow Riding
Helen & Andy Richards-Peelle
Ridlon Family
Ed & Judy Ryan
Suzanne Savage & Irvin Gordon
Brian & Patricia Sedaille
Alan & Linda Shelvey
Shrewsbury
Community Church
Conservation Commission
Library
Mountain School PTO
Volunteer Fire Department
Donna Smith
Bob & Sally Snarski
John C. Stewart
Jess & Ariane Torres
Liesbeth van der Heijden
Ann Vanneman
Lana Vanucchi
Arlene Walleth
Reesa Watson
Howard & Deborah Weaver
Jay Webster
Phyllis & Michael Wells
Nancy West
Lee Wilson
William & Peggy Wilson
Brian & Ruth Winkler
Mark & Connie Youngstrom

