



# Times of Shrewsbury



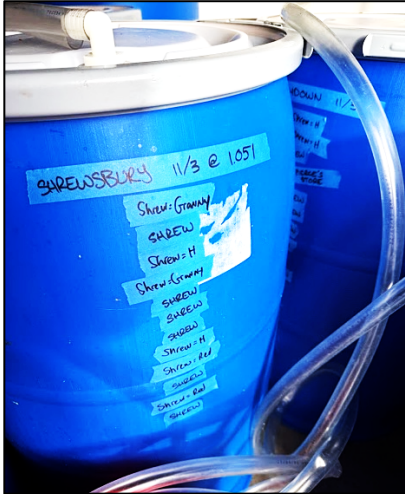
May 2026

## SHREWSBURY INVITED TO NAME A SPECIAL CIDER

Watson Wheeler Cider, a boutique farmstead cidery in Shaftsbury, will be launching a new cider made exclusively from Shrewsbury apples this fall. Watson Wheeler, which has rapidly become one of the most respected and sought-after cideries in Vermont, has invited Shrewsbury residents to suggest names for the new cider.

Watson Wheeler Cider, founded during the pandemic by two Vermont cider makers, specializes in making natural cider with no additives, including sugars or sulfites. Much of their cider is made from wild-foraged apples in the Green Mountain National Forest and elsewhere. They also own a 10th-generation orchard in Shaftsbury which contains unique apples confirmed through genetic testing to exist nowhere else.

Despite being a young company, they have doubled production annually to keep up with demand. They have been featured in Seven Days and Stratton Magazine and are a staple on the menus of top restaurants such as The Weston's Left Bank and as far afield as Brooklyn and Providence.



*Beginning the fermentation process with multiple batches of heirloom Shrewsbury apples*

The Shrewsbury connection came through Pierce's Store. Co-manager Harry DiPrinzio first discovered Watson Wheeler last summer, and when co-owner Bleecker Wheeler arrived at the store to deliver cider, he was

met by Lavinia Seide who showed him the heirloom apple trees surrounding the store.

Bleecker recalled his first impressions of Shrewsbury: "I was very happy to discover Shrewsbury and Pierce's Store, and the APPLE TREES. Wow. It got me thinking - wouldn't it be cool if we came back and did some foraging? And wouldn't it be even cooler if we created a blend that would be entirely unique to Shrewsbury?"



*Bottling the Shrewsbury cider in March 2026*

Last October, a crew of 4 foraged over 50 bushels of apples from various Shrewsbury trees, yielding over 100 gallons of fresh cider. Watson Wheeler used an innovative 'punchdown' technique, fermenting the cider with ground apples (pomace) to enhance flavor and tannins. After five months fermentation, the Shrewsbury cider was bottled in March and will bottle age for another six months until release this fall, giving the cider its 'pet-nat' sparkle. The cider promises to be excellent, meeting Watson Wheeler's high standards.

While the cider is bottle aging, Watson Wheeler will design a label, but herein lies a problem: what to name the Shrewsbury cider? When visiting Pierce's Store, suggest a name for the cider by adding to the list by the register, or you can email suggestions to pierceswine@gmail.com. The person who suggests the winning name will get a free bottle of the cider.

**Help the special Shrewsbury cider get over the finish line!**  
~Article by Sandy Bragg



*Lavinia Seide with an heirloom Wolf Apple tree near Pierce's Store*





## SHREWSBURY SELECTBOARD MINUTES

*The Selectboard meets the 1<sup>st</sup> and 3<sup>rd</sup> Wednesday at 6:30pm at the Town Office.*

### April 1, 2026: Minutes of Selectboard Meeting

**Present at meeting:** *Selectboard Members:* Aaron Korzun, Marc Cimonetti. *Town Clerk:* Rebecca Rice. *Admin Assistant:* Alaina Cimonetti (Remotely).

**Members of the public:** Catherine Schnieder. Laura Black. The meeting was convened at 6:32 PM.

**Agenda:** Motion made by A. Korzun to follow the agenda with the following additions: Excess Weight Permits for CAMP Precast Concert Products Inc. and Robert's Energy. Seconded by M. Cimonetti. All in favor, motion approved.

**Excess Weight Permit:** A. Korzun made a motion to approve the following Excess Weight Permits for Barret Trucking, CAMP Precast Products Inc., and Robert's Energy. M. Cimonetti seconded. Approved.

**Liquor License- Rustic Rooster:** A. Korzun made a motion to approve a first class and third-class liquor license for both inside and outside consumption for the Rustic Rooster. M. Cimonetti seconded. Approved.

**Line of Credit:** A. Korzun made a motion to approve the Treasurer opening a line of credit for the town for a total of \$500,000.00 at an annual interest rate of 4.75%. M. Cimonetti seconded. Approved.

**Appointments - Health Officer, Deputy Health Officer:** The Selectboard approves getting an electronic device for the Health Officer as well as a specific email address. The Deputy Health Officer position will remain open at this time. A. Korzun made a motion to appoint Cathrine Schnieder as the Health Officer for a three-year term. M. Cimonetti seconded. Approved.

**RNRCD Project Updates - Dam Removal, Northam Road Culvert:** The Mountain School Dam Project is still being bid on, the bids are due April 30<sup>th</sup>. The construction could start June 15<sup>th</sup> and could reopen August 10<sup>th</sup>. Northam Road Culvert received an additional \$200,000 grant for the project, almost fully covering the cost.

**2026 Local Emergency Management Plan (LEMP):** This will be revisited again at the next meeting for final edits.

**Land Records Digitizing and Digitizing Town Proceedings Documents:** A. Korzun made a motion to approve the Land Records Digitizing and Digitizing Town Proceedings Documents. M. Cimonetti seconded. Approved.

**Meetinghouse - Replacement Maple Tree:** The Selectboard approves replacing the maple tree that was cut down in the triangle near the meetinghouse.

**New Business/ Open to the Public:** No new business.

**Review Minutes:** A. Korzun made a motion to accept the 3/18/2026 Selectboard meeting minutes. Seconded by M. Cimonetti. Approved.

**Review Orders:** M. Cimonetti made a motion to approve the Selectboard Orders #4 for a total of \$5,743.70 and Road Orders #4 for a total of \$25,414.07. Correcting Selectboard Orders #3A to \$12,272.77. Seconded by A. Korzun. Approved.

Adjourned at 7:34pm.

*Respectfully submitted, Alaina Cimonetti  
These minutes are unofficial until approved by the  
Selectboard at the next regularly scheduled meeting.*

### April 15<sup>th</sup>, 2026: Minutes of Selectboard Meeting

**Present at meeting:** *Selectboard Members:* Aaron Korzun, Marc Cimonetti, Francis Wyatt. *Town Clerk:* Rebecca Rice. *Admin Assistant:* Alaina Cimonetti (Remotely). *Road Commissioner:* Dan Cavoto. *Auditors:* Sandy Bragg and Michelle Greene. *Assessor:* Mimi Burstein.

**Members of the public:** Michael Lauri (Remotely). The meeting was convened at 6:33 PM.

**Agenda:** Motion made by A. Korzun to follow the agenda with the following additions: Excess Weight Permits for Casella Construction and three Transfer Station Punch Cards. Seconded by F. Wyatt. All in favor, motion approved.

**Vacant Auditor Position:** Michael Lauri heard of this opportunity from the Shrewsbury Times, and he reached out to see if he could join. He has been coming to Shrewsbury for his whole life and has strong family ties to the area. A. Korzun made a motion to hire Michael Lauri as an Assistant Auditor. F. Wyatt seconded. Approved.

**Appointments - DRB Representative:** A. Korzun made a motion to appoint Cynthia Thornton as the DRB Representative for a three-year term. F. Wyatt seconded. Approved.

**Road Commissioner's Report:** The road crew has been working on street sweeping, and grading when possible. The trucks are also starting to go in for their spring service.

**2026 Rutland Regional Public Works Mutual Aid Agreement:** A. Korzun made a motion to approve the Rutland Regional Public Works Mutual Aid Agreement for 2026. M. Cimonetti seconded. Approved.

**2026 Local Emergency Management Plan (LEMP):** The LEMP has been signed and adopted.

**Assessor Contract:** A. Korzun made a motion to accept the assessor services contract with Wright Appraisal Services and Vermont Assessment Services. F. Wyatt seconded. Approved.

**Excess Weight Permit:** A. Korzun made a motion to approve the following Excess Weight Permit for Casella Construction Inc. M. Cimonetti seconded. Approved.



### In memory of Richard R. Swartz

Richard Swartz passed away peacefully Thursday, March 26, 2026, surrounded by his family at his home in Cuttingsville, VT. He was born June 12, 1938 in Syracuse, New York to Robert and Elise (Beaulieu) Swartz.



Richard graduated from New York State Ranger School and Syracuse University with a BS degree in Forestry. He worked many years for Central Vermont public service and retired from Vermont Electric Power Company (VELCO). He joined the Marine Corps in 1957, retiring as a corporal after nine years. He later enlisted in the Coast Guard Reserve and retired from there as a Lieutenant Commander after a combined 27 years of military service.

Richard will be remembered for his quick wit and wisdom; his teachings of survival skills, outdoor activities, hunting and fishing; and his love of music and dancing. He was an incredible mentor to his children, grandchildren and friends in all aspects of life. He was very proud of the special cholla cactus hunting knives that he made.

He will be missed by his wife, Donna; his daughters, Randi Ray (William); Sandi Swartz (Mark Hance); the stepdaughter, Cara Perry (Randy); his stepson, Burton Burnett (Michelle); his brother, James, Swartz, and his 9 grandchildren and 3 great grandchildren.

Please join us at a Celebration of Life on May 3, 2026 at 2pm at the Franklin Event Center, 1 Scale Ave., Rutland, Vermont.

## LETTERS TO THE EDITORS

### Service for Betsy (Patten) Gardner

Betsy (Patten) Gardner died on September 20, 2025 at the McLure Miller Respite House in Colchester. Her full obituary can be seen at Obituary: Grace Elizabeth "Betsy" Patten Gardner, 1939-2025 | Seven Days. Mom grew up in Cuttingsville and wanted to "go home" when she died, so she will be buried in Laurel Glen Cemetery in the family plot.

The family would like to invite anyone who knew her to a celebration of her life at the Community Meeting House on Saturday, May 9 from noon-4:00pm. ~Kate McDaniel

### Thoughts about Michael Wells

I learned so much from Michael Wells. His leadership at Spring Lake Ranch was based on humility and inclusiveness. He believed that everyone had something to offer to a discussion, whether it was a resident who had arrived yesterday or the most burnt-out staff member. More than that, he believed that every human being had something to contribute to the world, no matter how difficult or disabled that person might be. "It is the person you find most difficult who has the most to teach you."

~Submitted by Becki Bates



### Carol Goodwin Memorial Service

May 30, 2026 @ 2:30pm  
Shrewsbury Community Church

Reception following at Goodwin home  
3180 Upper Cold River Rd



### Hardy Spring Seedlings

We Grow  
Vegetable, Herb &  
Flower Starts  
For Your Garden

## Caravan Gardens

OPENING MID-MAY – ROUTE 103 CUTTINGSVILLE  
Questions - call or email 492-3377 or caravan gardens@gmail.com

Buying locally grown plants helps to ensure your seedlings are suitable for our region, allows you to get growing tips and supports local agriculture. We only use organic potting soil.





**LAUREL GLEN CEMETERY ASSOCIATION OF 1894**

It's hard to believe that May is here. With it, spring arrives, and a new season at Laurel Glen begins.

Many folks have expressed interest in helping get the Conservatory up and running. When it was built in 1881, it had a glass ceiling, running water, and year-round heat. Mr. Bowman insisted on fresh flowers for the Mausoleum and his statue every single day of the year. Imagine fresh roses in his statue hand in the middle of February! Sylvanus Dickinson of Salem, NY, was usher, gardener, and superintendent in the early years. The May 20, 1882 Rutland Daily Herald described him as a talented caretaker. "To Mr. Sylvanus Dickinson, the accomplished florist and janitor of the place, great credit is due for this rare display of plant life." We no longer have the glass roof, but the Conservatory is ready for some TLC.



Note the glass roof which opened and closed according to weather.

Once the weather gets warm, we want to start prepping the conservatory. There are a lot of items that need to be moved from the building. It would be great to start planting; we'll need shade plants since the former glass ceiling of the Conservatory is now opaque metal. And there will be the challenge of figuring out how to get water to the plants... Who can help with this?

Additionally, we need volunteer docents for the

Mansion, Conservatory, Mausoleum, and Cemetery. No previous experience is necessary; we can train interested folks and outfit them in "uniforms". We held a few successful cemetery tours in 2025 and look forward to offering more this fall. It's fun to learn to story of Bowman and share it with visitors! Join us!

Events at the mansion will be advertised in the Times of Shrewsbury, on Front Porch Forum, and on Facebook and our website. If you'd like to be added to the email list, email us!



Support the Laurel Glen Cemetery Association of 1894 and Friends of Bowman Mansion: send your tax-deductible donations to Friends of Bowman Mansion, P. O. Box 416 Cuttingsville, VT 05738. Or use our GoFundMe link.

Like us on Facebook:

https://www.facebook.com/groups/426580458623737  
Check out our website www.bomanmansion.org  
Email at laurelglen.bowmanmansion@gmail.com

~Submitted by Freddie Monder



**VT Maple Syrup & Treats  
Grassfed Beef & More**

- Sirloin Steaks - Pork Sausages
- Beef Roasts - Pork Chops
- Short Ribs - Ground Pork
- Sausages - Ham Steaks
- Ribeyes - Chicken Breasts
- Briskets - Whole Chickens

*Ground Beef Bag: 13 (1lb) packages \$97.00*

Fall in love with shopping local at our small Farm Store!!



**Available now - Bulk frozen blueberries**

\$6.75 per lb. while supplies last  
4 lb. minimum (one gallon-sized freezer bag)

Great for smoothies, baking and more!

To place an order , please call  
**Amy @ (802) 492-2207**



Pussy Willows



Ralmps



Fiddlehead Ferns

Three Spring plants to look for sure signs of SPRING!

**FREE Medical Equipment**

Medical assist equipment donated by Shrewsbury residents who no longer need them are available at no cost on a loaner basis. Including many wooden crutches, adjustable aluminum crutches, walkers, rollators, commodes, shower seats, bedpans, toilet safety bars, wheelchair, and more. If you need equipment or have an items to donate, call Donna Swartz at 773-7403.



## SHREWSBURY VOLUNTEER FIRE DEPARTMENT

We welcome spring back to the hills of Shrewsbury! The April showers are sure to turn the mountains green. Many of us are cleaning yards of winter debris. If you plan on burning clean wood or yard debris, you **MUST** call Forest Fire Warden Kevin Brown (802-345-8668) or Deputy Forest Fire Warden Al Ridlon (802-282-3642) for a burn permit. Fires cannot be left unattended and must not create a nuisance, such as excessive smoke. The Fire Wardens are aware of any burning restrictions ordered by the State of Vermont and communicate to the SVFD of any open burning that will be taking place. If you lose control of an open burn, call 911 immediately.

With spring upon us, outdoor grilling starts too! Keep grills away from flammable materials, at least 10 feet from the house, not under a porch or in your garage. It's also a good time to check the condition of your hoses and propane tanks. Maintain a 3-foot area around the grill and keep kids and pets away. Never use gas to replace charcoal lighter fluid!

The SVFD responded to three calls in the last month.

1. A call on Eastham Road for a reported structure fire. A quick response time limited the damage to the basement of a single-family home. The immediate call to 911 by the homeowner played an important role to minimize the spread and damage.
2. A mutual aid response to Mt Holly for a brush fire that was spreading toward a building. Fortunately, Mt Holly Fire Dept responded quickly and was able to knock the fire down and contain it before the fire could affect the building.
3. The last call was to the Upper Cold River Road for a reported lightning strike during a severe storm moving through the area. We determined the strike was close to the residence and possibly caused a voltage fluctuation that set off an alarm on electronic equipment. No damage was found.

Vehicle and equipment maintenance was performed. Equipment used at the structure fire was cleaned. The air-pack bottles were sent out for hydro testing. These pressure vessels contain the "breathing air", these bottles are required to be tested every 5 years for no defects in the spun fiber vessel. The bottles have a lifespan of 15 years and will require replacement after 5 additional years of service. The

**KEITH Hawkins**  
president

**Driveway Grading / Ditching**  
**Site Work / General Excavation**  
**New Lawns / Ponds**  
**House Sites / Septic Installations**  
**Land Clearing / Driveway Installations**

**HAWKINS EXCAVATION** Mount Holly, Vermont  
**802 558.3082**

30-year-old garage door openers were upgraded at Cuttingsville station.

On the 3<sup>rd</sup> Thursday we performed a first-attack drill. Members donned the gear and air-packs and practiced entering the building with equipment on and practiced radio communications. The remaining members did an active drill on the operations of the new Rescue 1 Pumper.

The Loyalty Day parade is Sunday, May 3 at 2pm in Rutland. SVFD will have trucks in the parade.

Enjoy your summer and remember:

**STAY FIRE SAFE!!**

*Submitted by Jack Perry*



### BURN PERMITS

If you are plan to burn brush you **MUST** call for a burning permit. **Contact Forest Fire Warden Kevin Brown 802-345-8668 or Deputy Forest Fire Warden Al Ridlon, Jr 802-282-3642.** The landowner is responsible to control a brush fire, ensure you have proper tools, water supply, and people to assist in containing the fire.

### THE SVFD NEEDS YOU!

We need new and younger members. The Shrewsbury Volunteer Fire Department (SVFD) can provide equipment, training, and support. Whether you've had prior experience as a first responder or have no experience at all! We need volunteers. Men or women who would like further information may call Bob Snarski at 492-3505, Barry Griffith at 492-3573, or Jack Perry at 773-3278. No commitment necessary.

**WIRENUTS  
ELECTRICAL  
LLC**

bbates@vermontel.net

**REBECCA BATES  
LICENSED  
ELECTRICIAN  
802-492-3406  
802-353-4376**

## Come and explore Jockey Hill Farm

Nan and I have been enjoying a few warm, sunny days wandering our fields and forests at Jockey Hill Farm. On my last visit, I was reminded of the fun we've had with our grandkids exploring the many natural features on the property during their visits back east. Nothing quite beats watching kids discover something for the first time like newts, spring peepers, garter snakes, a dense, enchanted forest, a small swimming hole along a stream and much more. What brings us great pleasure is having other



Shrewsberries also to enjoy the farm with their families. In 2020 during Covid, we opened the land to the public for a place people could escape the confines of their homes. By way of this article, we invite anyone in Shrewsbury interested in visiting the farm to come by. We have lots to see with picnic benches and Leopold benches (named after the famous naturalist, Aldo Leopold) scattered across our fields. There are numerous well-maintained trails around our 175 acres.

You are welcome to drop by at Jockey Hill Farm at 630 Coldham Rd, Shrewsbury) (off of Upper Cold River Rd) or call me 617-899-1011 or email at stoutim@gmail.com and I'd be happy to take you on walk around the property. If you drop by, drive up Coldham Rd for about three quarters of a mile until you see a wooden bridge across the stream on your right. Park across from the bridge, check out a map in a small Lucite box near the bridge, walk up between the house and the barn and follow any of the trails to the right, left and straight ahead of the woodshed. My brother, Chris and I and our families jointly own the farm which has been in the family since the mid 1930s.

I'm planning a couple of field trips at the farm this summer to present the many land management projects we have underway in collaboration with multiple regional, State-wide and National environmental organizations. We have several videos on YouTube and Googling on Jockey Hill Farm or "Tim Stout Vermont" will provide numerous links to the work we're undertaking at the farm.

We hope to see you! ~Submitted by Tim Stout



## AN EVENT NOT TO BE MISSED!!

### A MUSICAL AND SILVER SCREEN CELEBRATION OF MARJORIE PIERCE AND FAMILY

Singing and storytelling in the home was a part of everyday life in the early 1900's and Marjorie's mother taught her many folk tale songs as Marjorie perched herself next to the kitchen woodstove. Some of these were recorded in the 1980's when Marjorie was interviewed by Jennifer Post and published in her book and CD "Music In Rural New England".

Come hear songs in Marjorie's own voice PLUS hear these and other songs of this era played by our own Sarah Gibson (banjo), Silas Hamilton (guitar) and Anna Peele (fiddle) PLUS view an amazing video of historical Pierce family photos produced by Ahmet Baycu. A multi-sensory experience which will give us a sense of life in Northam a century ago and the family which passed on their much-loved Pierce's Store to future generations.

## SUNDAY MAY 17 4:30 -6pm Pierce's Garage

**Soda, beer, wine and  
light appetizers available**

This is a fundraiser to support Pierce's Store and is expected to be a sellout. Your generous donation in the basket will be most appreciated. Suggested donation of \$15-\$20/person. All proceeds go to support the store. Sarah, Silas, Anna and Ahmet have all volunteered their time and talents.

Questions? Mark Youngstrom 802-236-3658 call or text



### Ramp It Up! Celebrating 5th Anniversary

Fellow Shrewsberries: the sun is out! The birds are chirping! Spring foraging has begun! And that can only mean one thing: Ramp It Up! 5k at Spring Lake Ranch, which celebrates its fifth year on Thursday, May 7 at 2pm.



Ramp It Up! is a trail run/walk that coincides with the appearance of wild ramps on Ranch property. What started as one resident's idea to get outside and fight the COVID blues has grown into an annual event that helps residents connect with their neighbors.

The 5k route is plotted and marked by our Woods Crew. It begins on the lawn in front of Elizabeth House and takes participants across the Ranch's beautiful forests and farmland. Along the route, work crews set up refreshment stations and special activities that highlight each crew's unique responsibilities. The first three finishers get medallions hand-crafted by Shop Crew. A crowd of cheerleaders waits at the finish line, where everyone celebrates with music, community, and shaved ice from Scoop N' Chill.

The town is invited to join us on the hill on May 7 for the occasion. Last year, town residents Reese Bradbury and her father Mac finished in first and second place, respectively. They had just moved to Vermont that spring, and this was a big part of their introduction to the area.

Ramp It Up! is also a community fundraiser. Residents and staff at the Ranch compete in a ramp-themed design contest, sell shirts and stickers to raise money, and donate the proceeds to a local nonprofit. This year's adorable design was hand-drawn by PC Andi Bernans.

For the second year in a row, the residents selected the Shrewsbury Volunteer Fire Department to receive their donation. As we learned in last month's Times, the Fire Department gets about two-fifths of their operating budget from taxes, and the rest comes from fundraising. Every donation is vital!

Residents voted for the Fire Department because SLR driver/recovery coach/friend-to-all Hal Niblack is a volunteer fireman. And of course, our firefighters work hard to keep us all safe, which is a cause that's easy to support!

If you'd like to join in on the fun (and fundraising), there are multiple ways to get involved. Purchase Ramp It Up! merchandise from the Ranch's online store, make a gift to the Ranch and designate it for Ramp It Up! Like and share event posts on the Ranch's Facebook and Instagram, and register to participate as a walker or runner (suggest \$10 donation).

RSVP on our website (below) for the 5k by Monday, May 4. Ramp It Up! merchandise sales and donations will be active through Sunday, May 10. Let's see if we can beat last year's total of \$1,154.39 to the Shrewsbury Volunteer Fire Dept! To get started visit [springlakeranch.org/rampitup](http://springlakeranch.org/rampitup)

~Article by Anna Sutton; Drawing by Andi Bernans



## **PHOEBE TUCKER FOR VERMONT**

### **CHICKEN BBQ FUNDRAISER!**

Please join us on **Saturday May 16th 11am-2pm**, for the launch of Phoebe Tucker's campaign for State Representative.

Savor John Murphy's famous BBQ chicken with 2 side dishes for only \$15 per meal! Meet us at Ludlow's Mini Park (next to the Town Hall on Depot Street). The event is rain or shine! Come enjoy the festivities, music, and meet Phoebe Tucker, your candidate for the Ludlow, Mt Holly, and Shrewsbury legislative district.

*Paid for by Phoebe For Vermont  
Treasurer: Scott Garren,  
135 Spring Lake Road, Cuttingsville, VT 05738*



### **Can you name it?**

*I found this "thing" in the woods on my property, and I wonder if anyone has any idea what it might be? It's 14 1/2" in diameter. Photo on left is looking down into it, and photo on the right is the other side. If you have an idea about what it is, email me at [bbates@vermontel.net](mailto:bbates@vermontel.net)*

*~Becki Bates*



## **STORYTIME**

**Wednesday, May 13 @10 to 11am**

at the Shrewsbury Library

with special guest

Anne Marie and her fabulous dog Faith

# SHREWSBURY LIBRARY

Library News Submitted by Joan Aleshire  
CELEBRATING 50 YEARS & COUNTING

Monday 10am to 12pm  
Tuesday 7pm to 9pm  
Wednesday 10am to 5pm & 7pm to 9pm  
Thursday 7pm to 9pm  
Friday 10am to 12pm  
Saturday 10am to 12pm

Want to know if the Library has a particular book or DVD?  
Want to put a hold on an item or renew one you've borrowed?  
Please visit [www.shrewsburylibrary.org](http://www.shrewsburylibrary.org).

To suggest a book to add to our collection, please contact DONNA SWARTZ for Children's and Young Adult titles ([donnaswartz44@aol.com](mailto:donnaswartz44@aol.com)) and JOAN ALESHIRE for Adult Fiction and Non-Fiction ([joanaleshire@vermontel.net](mailto:joanaleshire@vermontel.net)). We can request books on Inter-Library Loan, if the cut in federal funding allows. We will buy books depending on our budget and our collection's needs.

MANY THANKS to Vermont Farmer & Filmmaker GEORGE WOODARD for bringing his presentation, "Farming: The Greatest Adventure No One Knows About" to the library—an entertaining and enlightening event that faced stiff competition that day!

### SAVE THESE DATES!

- Sunday, July 12:** *Man With A Plan* with Filmmaker John O'Brien
- Saturday, August 1:** SANDGLASS THEATER: *Puppet Crimes*
- Saturday, August 29:** Dinner & Street Dance

### Continuing Programs:

**Sunday, May 3 @ 4pm:** WRITERS' GROUP: If you have poems or short prose pieces (stories, personal histories) to share with our supportive, friendly group, please join us. For information, contact Penelope Weiss: [pw9@earthlink.com](mailto:pw9@earthlink.com) or Joan Aleshire: [joanaleshire@vermontel.net](mailto:joanaleshire@vermontel.net).

**Sunday, May 24 @ 4pm:** via Zoom: FAMOUS BOOKS BOOK CLUB: Our next book is Shakespeare's *Julius Caesar*: appropriate for these turbulent times! Please contact Joan for the Zoom link, if you need another copy of the play, or have questions: [joanaleshire@vermontel.net](mailto:joanaleshire@vermontel.net).

**Sunday, May 24 @ 4pm:** In-person & via Zoom: SCIENCE BOOK CLUB: *Spying on Whales*. Print and e-books are available. Please contact Margery Salmon to get a copy: [salmonm@vermontel.net](mailto:salmonm@vermontel.net). Science Book Club will start summer hours (7pm) in June.

### New Books include:

- The Keeper* by Tana French: A new, spellbinding mystery by the Irish writer.
- Hope Rises* by David Baldacci: A new political thriller by this popular master.
- The Best Dog in the World*: An anthology edited by Alice Hoffman, with essays by Elizabeth Strout, Jodi Picoult, Amy Tan, and Isabel Allende.
- Stay Alive: Berlin 1939-1945* by Ian Buruma: A history of anti-Nazi resistance.
- The Witch* by Marie NDiaye: The International Booker Prize-winning novel.
- Beartooth* by Callan Wink: A novel about friendship, ambition, and competition, set in Yellowstone National Park.
- Here Where We Live Is Our Country* by Molly Crabapple: A ground-breaking history of the 1930's Jewish Bund, and its message of solidarity in a time of division.
- London Falling: A Mysterious Death in a Gilded City and a Family's Search for Truth* by Patrick Radden Keefe: Riveting non-fiction by the author of *Say Nothing*.



### BOOK REVIEWS

\*\*\*\*\* Fantastic  
\*\*\*\* Compelling page turner  
\*\*\* Enjoyable  
\*\* Just O.K.  
\* Not recommended

Please share your book reviews. Send them to Marilyn Dalick [maplesugar@comcast.net](mailto:maplesugar@comcast.net) for her to compile and submit to the *Times*.

### The Best American Science and Nature Writing (2025) editor, Susan Orlean

★★★★★

The best thing about this yearly compilation is that there will always be a story that interests every reader and either delights or repels. The stories are selected from our most esteemed and exceptional places, *The Atlantic*, *The New Yorker*, *The Smithsonian*, to name a few of the best known.

Science and nature writing is never dull. Its dedication to reality is sometimes brutal in its honesty. The stories are amazing--sometimes joyful, funny, alarming, heart-breaking, but always real. The reader always has the option of turning the page if the going gets tough. This is the price we pay to be educated, informed. The Shrewsbury Science Group always looks forward to reading this yearly offering. Some of the stand-out stories for 2025 are:

The Worm Charmers  
The Whale Who Went AWOL  
We Need to Rewild the Internet  
The Snake with the Emoji-Patterned Skin

Letting Naomi Die  
Maui on Fire

~Reviewed by Marilyn Dalick



# Shrewsbury Historical Society

www.shrewsburyhistoricalsociety.com

The Shrewsbury Historical Society looks forward to our annual visit with Mountain School 6<sup>th</sup> graders. This month we have a special program to present, as well as an invitation for the students to bring their families and friends to explore the museum this summer.

In preparation for the Museum opening day on July 5, we are setting up several exciting new exhibits. We hope to see many townspeople and many out-of-town visitors at the celebration.

The Shrewsbury Historical Society will be open on Sundays from July through October, from 1 to 3pm and by appointment. Come visit!

For more information, call our President, Brian Winkler at 802-492-3324 or Grace Brigham, 802-492-3458, or email Julianne Sharrow at julanne@vermontel.net.

Also, visit our website, shrewsburyhistoricalsociety.com, where you can see wonderful photos of life in Shrewsbury, listen to interviews with residents, and learn some amazing facts about our town.

~Grace Brigham for the Shrewsbury Historical Society  
~~~~~



**May 1, 2026: Flower Moon**  
**May 31, 2026: Blue Moon**

May isn't the month of the Harvest Moon, but it IS the month of TWO full moons! So, it might be a sleepless month for many of us!

The photo of the Harvest Moon over Shrewsbury on September 9, 2014, at 10:00pm was taken by Brian Winkler.

**Your one stop shop  
for all things local  
and handmade:**

- MAPLE SYRUP
- CRAFT FOOD
- CIDER & BEER
- ANTIQUES
- & MORE!

5444 VT 103, Cuttingsville, VT 05738

**Upcoming Events & Announcements**

Mother's Day May 10th & Father's Day June 21st

Find the perfect gifts for the people in your life at our shop. We're always updating our inventory & you'll love what you see!

Say hi to some new faces!

When you stop in, you will be greeted by different members of our lovely family, who are graciously keeping our doors open. Thanks to their kindness & generosity, we will have regular store hours while we welcome **Baby #2.**

**Open Wed-Sat: 11am-6pm | Sun: 11am-7pm**

We will update our Instagram & Facebook stories on days where our hours will be disrupted. Find us @wallyscorner to be kept up to date.

**Because flavor matters, make it:**

*Please stop by our farm store, and sample our Pure VT Maple Syrup.  
While you are here, stock up on :*

|                         |                 |                       |
|-------------------------|-----------------|-----------------------|
| Maple Candies           | Locally Sourced | Ground Beef           |
| Maple Cookies           | Pork (cuts)     | Grilling Steaks       |
| Maple Spices, Marinades | Chicken (cuts)  | Ribs, Roasts Briskets |
| Sugar and Snacks        | & Eggs          | Sausages & More       |

Gift bags of Vermont goodies and meat freezer boxes available

**OPEN WEDNESDAY-MONDAY 10AM-5PM**

2450 Lincoln Hill Road, Shrewsbury VT. 05738

SmithMapleCrestFarm.com 802-492-2151 maplecrest.info@gmail.com

**We ship our syrup and products all over the USA**

From: Rutland: Left off VT RT 103 just 2.5 miles - on the right

From: Cuttingsville: Just 2.1 miles up Town Hill Rd, right on Lincoln Hill Red Barn on right

**Joseph P. Donohue, DC**

**Lisa Marie Donohue, MA, LMT**

---

Chiropractic Care • Applied Kinesiology  
Therapeutic Massage/Bodywork  
Holistic Health Education • Nutritional Supplements  
Coaching • Worksite Wellness

---

Serving the Community with Excellence and Compassion Since 2000

68 South Main St, Wallingford, VT • 802.446.2499 • www.instagram.com/thrivecentervt

## The Shrewsbury Community Church



Compiled by Sue Ransom-Kelley

### Invitation to the Shrewsbury Community.

Please come and Help us Make a Difference! On Sunday May 17, 2026, at 11:30am, immediately following worship service we will gather upstairs at the Shrewsbury Center



Church & Meeting House to assemble Hygiene Kits, Women's Specific Hygiene Kits, and School Kits for Church World Service. Kits will have basic hygiene items and school supplies in them. They will be distributed to areas in the world when disasters occur. Cleanup

& Hygiene Kits were distributed in Vermont when disastrous floods occurred. Recently, hygiene kits were sent to South Carolina. Our goal this year is to assemble 24 hygiene, 10 period, and 12 kids kits. Please assist us in assembling these kits. We also need monetary donations. Our goal is to raise \$492.50 to pay for kit supplies and \$92 to pay toward distribution costs.

Every Kit is filled with hope and packed with love! This mission project gives us the ability to help someone facing a difficult time find comfort, care, and hope!

### Small can be a large benefit

In Shrewsbury we are small by nature. This has both advantages and disadvantages. What is true in Vermont in general but in Shrewsbury specifically, is that it's hard for a local to go to an event in the town and not recognize someone. You go to Shrewsbury Day and watch your friends and acquaintances go by in the parade. We say hello to people at the concerts, at the Pancake Breakfast, for example. Attendance at Shrewsbury Community Church has decreased as it has all over. As a state we are one of the oldest. What really matters is whether people are fed, spiritually and physically. We have been having fun and great discussions in the book groups and now the Bible study group that we have been having. Bet you didn't think that as part of Bible study that the topic of aliens (UFOs, not illegal aliens) would come up!!



When I first got to the Shrewsbury Community Church I was amazed at how the "small" number of people could serve so many others: stock the food shelf; support the Helping Hand Fund and the Christmas Giving Project for families in need. We may be small in numbers but are big in heart, big in love, big in generosity, sharing and serving. Those are the things that count and for that I am humbled to be their pastor.  
~Peace, Pastor Karen Braeutigam

## Shrewsbury Community Church Calendar

Sun, May 3, 1030am Fun Day Program for kids. Worship Service and Holy Communion led by Pastor Karen Braeutigam

Sun, May 10, 1030am Fun Day Program for kids. Special Project for Mother's Day. Worship Service led by Pastor Karen Braeutigam.

Sun, May 17, 1030am Fun Day Program for kids. Worship Service led by Pastor Karen Braeutigam. Join us immediately following worship service to help assemble disaster relief kits for Church World Service.

Sun, May 24, 1030am Fun Day Program for kids. Worship Service led by Rev. Kathy Clark.

Tues, May 26 @ 12noon: Prayer Shawl Group. Upstairs in Meeting House. All are welcome! Dessert, coffee, and tea served. Bring a bag lunch if you like. Come and we will teach you to knit or crochet! For info call Roxanne 802-492-3675.

Sun, May 31, 1030am Fun Day Program for kids. Worship Service led by Pastor Karen Braeutigam.

### Community Food Shelf

Free Community Food Shelf at the Library in the front entry way. Those in need are welcome to help themselves any time the Library entryway is open.

Limited hours are:

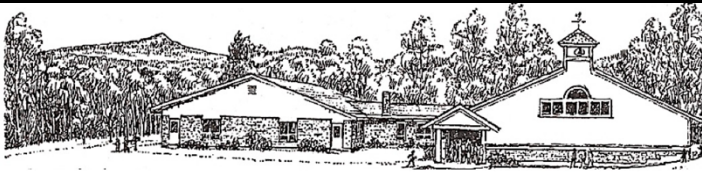
Mon 10am-12noon; Tues 7-9pm; Wed 10am-5pm and 7-9pm; Thurs 7-9pm; Fri 10am-12noon; and, Sat 10am-12noon.

Food Delivery and Assistance If you are unable to get to the Food Shelf at the Shrewsbury Library, we will deliver groceries to you. If you need items not available on the shelf, we can provide grocery gift cards. Call Karen at 802-558-5991 or Sue at 802-779-4360 or 802-492-3738.

### Community Needs

- Wedding, Funeral or Memorial Service Requests: Contact Julanne Sharrow 802-492-3361, or Sue Kelley 802-492-3738, 802-779-4360
- Community Helping Hand Requests: Contact Sue Kelley 802-779-4360, 802-492-3738; or Karen Lorentz 802-558-5991. Shrewsbury residents experiencing financial hardship. Assistance can be given for basic needs (food, heating, gasoline, etc). If you or a neighbor are in need, please let us know!
- Pastoral Care, Home, Hospital Visitation, Outreach Requests: Contact Roxanne Ramah 802-492-3675 or Ruth Kinne 802- 775-5318.

Revised 3/1/2026



## SHREWSBURY MOUNTAIN SCHOOL

### Important Dates:

**April 5 - May 30: 2026 Hannaford Helps Schools**

**May 4-8 - Teacher Appreciation Week**

**May 14 - SMS PTO Meeting 6:30pm**

**May 18 - Half Day Release**

**June 5 - Field Day**

**HUGE THANKS** to DJ Brett who provided awesome tunes for our All-School Family Dance! We had a blast connecting with caregivers and students dancing the night away! We are grateful for our SMS PTO who has helped coordinate these special events.

**Four Winds Learning Experiences: Our students LOVE this program!** We are looking for more volunteers to lead our students in learning about nature and exploring the outdoors. Please reach out to me or Gretchen Gould at dtvermont@hotmail.com

**SMS Book Buddies:** Our students LOVE to be leaders! This school year Ms. Levin's Grade 3 and 4 students partnered together with Miss Melissa's PreK students in our Book Buddies program. There is a special time set up each week where the big kids get to visit the PreK classroom, select books, and read to the PreK students. This is a beautiful learning and confidence building experience that is deeply loved and appreciated by both age groups of students. We LOVE reading at SMS!

School families and community members - this is a great way to support Shrewsbury Mountain School!!!

We are excited to participate in the Hannaford Helps Schools program! This easy fundraising opportunity allows our school

to earn money for educational resources simply through everyday grocery shopping. Between April 5 and May 30, for every 4 qualifying items you buy, you'll earn 3 School Dollars! When shopping in-store, look for products marked with the Hannaford Helps Schools shelf tag. At checkout you will receive a School Dollar printout to be redeemed online.

When shopping online using Hannaford To-Go, look for products with a red apple icon. After shopping you will receive an email with the School Dollar redemption code.

To redeem, simply scan the QR code on your printout or visit the Hannaford Helps Schools website, enter your school dollar code and select Shrewsbury Mountain School as the recipient!

Thank you for your support! SMS PTO

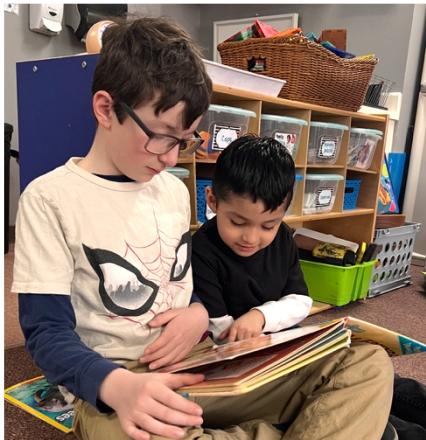
I am always available to support our school families and connect with community members. Please contact me at 802-786-3995 or at kcimonetti@millriversschools.org if you have any questions or concerns.

*~Kristin Cimonetti, Principal*



## Shrewsbury Mountain School

### BOOK BUDDIES



EXPLORE. DISCOVER. THRIVE.  
**Mill River**  
 Unified Union School District

## Preschool and Pre-k Registration 2026 - 2027 School Year

Registration is open for families that reside in the Mill River School District towns of Clarendon, Shrewsbury, Tinmouth, and Wallingford with a child 3 - 4 years of age. Our Registration Day is a chance for you and your child to visit our program and begin the registration process. Enrollment is available on a limited basis.

- Preschool child must turn three years old on or before August 31, 2026
- Pre-K child must turn four years old on or before August 31, 2026

For More Information and To Schedule An Appointment



Sarah Bolster, Pre-K Coordinator  
[sbolster@millriverschools.org](mailto:sbolster@millriverschools.org)  
 802.786.3998 ext 218

### Registration Days

(By Appointment Only)

**Clarendon Elementary**  
 May 8, 2026

**Shrewsbury Mountain**  
 May 15, 2026

**Tinmouth Mountain**  
 May 4, 2026

**Wallingford Elementary**  
 May 11, 2026



# GREEN UP DAY 2026

## SAT. MAY 2

Pepe le Shrew invites **YOU** to the MEETING HOUSE

★ 8-10 AM BREAKFAST

① Select your ROAD on OFFICIAL MAP

② TAKE 2 BAGS

(1 for recyclables, 1 for trash)

③ TAKE A RAFFLE TICKET (KIDS' RAFFLE & ADULT RAFFLE)

★ 10 AM - NOON



DELIVER FULL BAGS TO TRANSFER STATION.



BREAKFAST 8-10 AM



RAFFLE PRIZES!

THANK YOU!

FROM YOUR CONSERVATION COMMISSION

YOU MAKE OUR TOWN BEAUTIFUL.

## SNO-BIRD NEWS



Well, the season ended quicker than we wanted but we have no control over mother nature. When we were open in January and February the trails were really nice as we heard from the riders all the time. So, all in all the season was good.

Now we move on to the off-season projects and there are always things to do. Scott, Dave, John helped getting the gates closed and signs picked up to protect them. In the next week or two we will get the Tucker cleaned up and loosen the tracks and cover them with tarps to protect them. There are a couple of things to look at this spring but most maintenance on the Tucker is later this summer and fall. I do not think that there are any serious issues but sometimes things pop up when you don't expect them.



*Last fall JR Bove helped us with repairing the paint on parts of the Tucker it looks very nice. Thank you JR!*

We have another big bridge project on 4&7 north of the Gilman Road headed towards the Wheelerville Road. We expect that it will be done by the next season.

All of our project applications have to be submitted to VAST by June 1st or June 31st depending on the type of project to see if they get approved. Someone in the club has to do the spring construction course in May to be able to get VAST funding, I have done that for years and Mike said that was my job again this year. We also have to watch a chain saw safety course some time from May to August also. We try and have as many members do that course as possible. There is a lot of behind the scenes paper work and permits that need to be done for the club to get approval and funding to help with these projects.

Just a reminder to everyone that these trails are not open to wheeled vehicle usage unless you are doing trail work and we have signs that say so to put on the atvs. Also, on private property they are not open for walking unless the land owner allows it. VAST trails only get permission for snowmobiles. please respect the land owners wishes! ~by Roy Arthur



We've reached the start of garden season, and folks are preparing to get seeds and starts in the ground during the latter half of May. SAGE and Evening Song Farm will once again provide plant starts for the Mountain School and help mulch and plant the SMS garden throughout the end of the school year.

Sustainable mulching is one of the most effective ways to build healthy soil, conserve water, and keep weeds in check—naturally. Here are a few simple techniques to try this season in your home garden:

### 1. Straw Mulch for Light, Breathable Coverage

A classic choice for vegetable beds, straw creates an airy layer that suppresses weeds while allowing water to penetrate. It's easy to spread and breaks down gradually, feeding the soil over time.

### 2. Cardboard Sheet Mulching for Weed Suppression

Large pieces of plain cardboard can be laid directly on the soil to smother existing weeds and prevent new ones from sprouting. Overlap edges, wet thoroughly, and top with organic material like straw or leaves for best result

### 3. Leaf Mulch to Recycle Fall Abundance

Shredded leaves are a free and nutrient-rich mulch option. They insulate the soil, improve structure as they decompose, and encourage beneficial microbial life.

### 4. Grass Clippings for Nitrogen Boost

Fresh, untreated grass clippings can be applied in thin layers around plants. They add nitrogen to the soil but should be used sparingly to avoid matting and odor.

### 5. Wood Chips for Paths and Perennials

ideal for garden paths and around shrubs or fruit trees, wood chips break down slowly, providing long-term weed suppression and soil improvement. Use cardboard sheets under wood chips for garden paths directly over grass.

### 6. Compost as a Mulch Layer

A finished compost layer not only suppresses weeds but also feeds your plants directly, enriching the soil surface with nutrients and beneficial organisms. With a thoughtful approach to mulching, you can reduce maintenance, improve soil health, and set yourself up for a more enjoyable garden season!

SAGE, Shrewsbury Agricultural Education & Arts Foundation, has a mission to support and promote sustainable farming and other arts that nourish community life. For more information about SAGE: contact Stephen Abatiell at [educate.sage@gmail.com](mailto:educate.sage@gmail.com), Joan Aleshire at 492-3550 or visit [www.sagevt.wordpress.com](http://www.sagevt.wordpress.com). Follow us on Facebook for up-to-date event details at ShrewsburySAGE and find our sustainability and arts videos at [www.youtube.com/@sagefoundation](http://www.youtube.com/@sagefoundation).

~Submitted by Stephen Abatiell

**Presentation Packs the Shrewsbury Library**



On Friday, March 20, an audience of over 35 people flocked to the library to learn how to coexist in harmony with one of Shrewsbury's most intelligent and resourceful residents – the American black bear. The program, hosted by the Conservation Commission and led by Tom Gieder, Wildlife Specialist with the U.S.

Department of Agriculture, focused on how to safeguard homes, gardens, trash containers, pets and bee hives from bears and their insatiable appetites. Gieder has been a wildlife specialist with USDA Wildlife Services since 2017. He currently works on mitigating human-wildlife conflict, primarily with bears.

When bears emerge from their dens in late winter/early spring, they are very hungry after losing 15 to 40% of their body mass while hibernating. They may eat up to 20 hours a day regaining the weight they lost. As omnivores, bears eat a varied diet, including berries, nuts, insects, and plants. Unfortunately, their insatiable appetites also attract bears to human-provided food sources. With their extremely keen sense of smell - estimated to be 7 times more sensitive than a bloodhound, and 2,100 times better than humans - bears easily pick up on the scents of garbage in trash cans or dumpsters, seed in bird feeders, grease on barbeque grills, and food for pets, chickens, and livestock fed outside.

Bears can cause extensive property damage in pursuit of human-provided food. Hungry bears can damage trash

containers, cars, bird feeders, sheds, garages, chicken coops, beehives and more in their effort to get to food sources to satisfy their appetites. When bears become used to finding these food sources in human habitats, they become more dependent on human foods and less wary of humans themselves. This can put bears, people, and property at increased risk.

Tom Gieder provided several effective strategies to help residents prevent their property from becoming an all-you-can-eat buffet for bears:

- **Feeding birds:** Feed birds from December to March only, take your feeders indoors and store them and any leftover birdseed in a secure place like your basement.
- **Parked vehicle:** If you park your vehicle/s outside of a garage, don't leave food, gum, mints, or candy inside. Locked doors and closed windows will not deter a strong and hungry bear from breaking in if they smell something tasty.
- **BBQ Grills:** Store BBQ grills indoors when not in use.
- **Pet Food:** Feed your pets indoors, and do not store pet food outdoors or in carports or sheds where bears can easily get into them.
- **Fencing:** Keep chickens, compost and honeybee hives secure within an electric fence. In urgent situations, USDA can facilitate the short-term rental of electric fencing while residents purchase fencing of their own.
- **Trash:** Store trash in a secure place. Trash cans alone are not enough. Tom recommended trash cans be stored in an enclosed and secure garage.
- **Bear proof containers:** If you use a garbage pickup service, request bear-proof trash and recycling containers or dumpsters. Bear proof trash containers should have lids that are lockable on at least three sides. Metal containers and dumpsters are best, since some larger bears may be able to break open plastic containers.

Tom reminded the audience that bears are wild animals that belong in their natural habitat, and we all have a shared responsibility to avoid attracting them to human habitats. Please report any bear incidents at <https://www.vtfishandwildlife.com/learn-more/living-with-wildlife/living-with-black-bears>.

~Article by Michelle Greene, Shrewsbury Conservation Commission

**RIVERWOOD  
LAWNCARE, LLC**  
FREE ESTIMATES FULLY INSURED

**SPRING CLEAN-UP TIME!!!!**

**PLOW DAMAGE REPAIR/CLEANUP**  
**REGRADE GRAVEL DRIVES/PARKING AREAS**  
**POWER/HARLEY RAKE**  
**STUMP GRINDING**  
**DETHATCHING, MULCHING**  
**MOWING, TRIMMING**  
**POWER BROOM, LEAF CLEAN-UPS**  
**BRUSH HOG/WET AREAS**

**802.770.0433**  
**riverwoodlawncare@gmail.com**

**Beardmore  
Excavating**

(802) 342-3507

Robert Beardmore, Jr. 5256 VT-155  
beardmoreexc@gmail.com Belmont, Vermont 05730



**Shrewsbury Conservation Commission  
Trail Camera Picture of the month**



**Black Bear and Turkey Rituals**

The secluded woods of Shrewsbury make an idea environment for black bears, but how do they communicate with one another over the miles of hills, hollows, and meadows? A black bear’s scratch marks on a tree or a wooden power pole are a form of communication! When a black bear stands tall, rakes its claws down a tree, and rubs its back along the bark, it’s leaving behind a message written in scent and scratches. Bears have scent glands in their paws and skin, so every rub or scratch leaves a trace of their identity that tells others, “I was here.”

It’s not about aggression or territory. In fact, black bears’ home ranges often overlap, and these markings actually help them avoid conflict, allowing bears to share the same landscape peacefully. And sometimes, scratching is also just practical, helping remove old fur or relieve an itch as the seasons change!

Thanks to Lisa King for sending fantastic photos that she took on April 7 of tom turkeys battling for the position of king of the flock! Tom turkeys (a.k.a. “gobblers”) fight to establish dominance and social hierarchy within the flock, particularly during spring mating season or fall flock restructuring. These battles involve dramatic displays of locking beaks, neck wrestling, wing slapping, and kicking.

If you have a wildlife or tracks photo to share, please send them to me at [michelle.a.greene247@gmail.com](mailto:michelle.a.greene247@gmail.com).

~Submitted by Michelle Greene





**REINBOW RIDING CENTER**, a therapeutic horsemanship program, is now accepting applications for 2026 program participants! The mission of Reinbow Riding Center is to improve the well-being of individuals with unique physical, emotional and/or cognitive challenges through a customized therapeutic equine experience.

There will be three (*Spring, Summer & Fall*) 7-week sessions, with one-week breaks between each session. The Spring session is May 18 to July 3; Summer session is July 13-Aug 28, and Fall session Sept 7--Oct 23. There will be four 1-hour lessons (*individual & group*) per day, from Monday to Friday at 9:30am, 11:30am, 1:30pm and 3:30pm. Applications to participate and financial assistance forms are at: [reinbowridingcenter.org/therapeutic-horsemanship](http://reinbowridingcenter.org/therapeutic-horsemanship). Application deadline for Summer session is June 15, and Fall session deadline is August 10. Participants are reminded to wear pants and closed-toed shoes. They are responsible for their own transportation to and from the riding facility. For more info about Reinbow Riding Center visit: [www.reinbowridingcenter.org](http://www.reinbowridingcenter.org). If interested in sponsoring or supporting the upcoming 2026 season, go to: [reinbowridingcenter.org/support-us](http://reinbowridingcenter.org/support-us).

**Volunteer Orientation:** We're Looking for anyone who wants to come join the fun! Become a Volunteer for Reinbow Riding Center's Therapeutic Horsemanship Program No experience necessary, just the desire to help children and adults overcome challenges and have FUN with Horses! There are non-horse-related opportunities available as well. We will be holding a Volunteer Orientation on Saturday, May 9 starting at 10am at Stone Wall Farm, 892 Tarbellville Rd in Belmont For additional information please email [janetupton@reinbowridingcenter.org](mailto:janetupton@reinbowridingcenter.org)  
~Info provided by Diane Stockton-Breese and Janet Upton



**Not just your average truck!**

The August 2025 issue of the Times of Shrewsbury (page 11) featured an article by Mark Younstrom about the unique World War II truck named "Black Magic." Becki Bates had been gifted the truck by Spring Lake Ranch where she had maintained and operated it over 37 years.

Becki has enjoyed putting "Black Magic" to good use, but also encouraged her friends to continue the Ranch tradition to spruce up the truck with artwork. There are paintings on the fenders, the running boards, under the seat, the radiator grill....it's a colorful sight, and these are just a few of the paintings that brighten it up! ~Photos by Becki Bates



- Property Management
- Lawn Care
- Excavation
- Driveway Re-Grading
- Spring & Fall Clean up
- Brush Hogging

Located right here in the heart of Shrewsbury!  
[coldrivervt@gmail.com](mailto:coldrivervt@gmail.com)

Mount Holly, VT

**Joshua Bickford**  
802.855.3216  
[joshfbickford@gmail.com](mailto:joshfbickford@gmail.com)



**DB**  
TREE WORKS

Fully Insured • Tree Removal • Pruning

# ENGEL & VÖLKERS®



## Spring Listings Soon to Bloom

Spring has arrived in Vermont, and with it comes a fresh crop of homes as inviting as the season itself. Let us help you find a home rooted in nature, calm, and character.

This is where simple moments feel extraordinary, and the right home is ready to be found.



**Gail Beardmore**  
Broker | Owner

Gail.Beardmore@EVrealestate.com; (802) 236-5431

©2026 Engel & Völkers. All rights reserved. Each brokerage independently owned and operated. Engel & Völkers and its independent License Partners are Equal Opportunity Employers and fully support the principles of the Fair Housing Act.

## SHREWSBURY OUTING CLUB NEWS

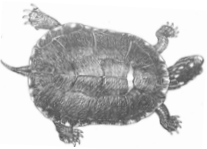
The Shrewsbury Outing Club is gathering membership for its 71<sup>st</sup> year!

The Shrewsbury Outing Club (SOC) is a volunteer nonprofit organization open to residents and landowners of Shrewsbury who choose to become members. We lease a small piece of Spring Lake waterfront for members' use. We also have occasional outings, work with lake shore owners on monitoring loons and water quality, and help maintain trails in Northam.

An SOC Family Membership is available to any Shrewsbury resident, "Shrewsbury family" or deeded landowner who has submitted the 2026 membership form, signed the waiver, and paid the annual fee. A "Shrewsbury family" is defined as a family residing at one address in Shrewsbury. Family members living at another address and non-members are considered guests and must be accompanied by an SOC member to use the SOC waterfront area. All guests must be accompanied by an adult member.

If you wish to join as a new member for the upcoming season, please contact us at [ShrewsburyOutingClub@gmail.com](mailto:ShrewsburyOutingClub@gmail.com) for the forms. 2026 Membership Forms and Waivers will also be available at the Shrewsbury Town Office. Last year's members will be emailed 2026 forms on May 1, 2026. Please be sure to add the SOC to your email contacts so that these forms do not go to spam.

The completed 2026 Membership form, signed waiver, and membership dues of \$55 payable to the Shrewsbury Outing Club, should be mailed to:



Shrewsbury Outing Club  
c/o Chris Clarke, Treasurer  
4431 VT Route 103  
Shrewsbury, VT 05738

This year's membership is valid from June 1, 2026 to April 31, 2027. Your name will be added to the membership list posted at the lake and given to the security guard. After June 1, membership requests will be processed and added to the membership list only on Fridays. You may be asked to leave if your name is not on the list.

*~ Submitted by Grace Brigham and Carrie Clancy,  
Shrewsbury Outing Club*

COMMERCIAL/RESIDENTIAL DRIVEWAYS

**C.N. WEBSTER**

EXCAVATING  
47 RAILROAD DRIVE  
N. CLARENDON, VT 05759  
(802) 558-3275

COMPLETE SITE WORK SEPTIC SYSTEMS

## BRANCH BROOK EXCAVATING LLC

Driveways / Harley Raking / Ditches and Drains /  
Land Clearing and Reclaiming / Stump Removal /  
Retaining Walls; New and Old / Ponds/Power, Gas,  
and Water Line Burial/ General Dirt Work



Benjamin Turco

1269 Branch Brook rd

Mount Holly, VT 05758

Phone: (802)770-8964

[branchbrookexcavating@gmail.com](mailto:branchbrookexcavating@gmail.com)

### Herbal Support for Optimal Health

We often think of health as black and white – either you're well or you're sick. In reality, health exists on a spectrum – you might feel strong and capable in many ways, but still struggle with digestion under stress, or notice your energy and immunity aren't quite what they used to be.

Herbal medicine can act in both powerful and subtle ways. 40% of modern pharmaceuticals are derived from plants long used by people, including many of the top-selling drugs in the United States. Statins for cholesterol (originally derived from fungi) and digitalis for treating heart disease (from foxglove) are well-known examples – highlighting the potency of plant medicine. Where herbs truly excel is in gently supporting the body's underlying processes, helping restore balance and moving us toward greater health over time, often reducing the need for stronger interventions.

Each person's health story is unique. I take the time to listen and craft individualized plans using herbs and simple lifestyle approaches to support the body's natural healing process. My intention is to help people rediscover trust in their body's innate intelligence and in the quiet, generous medicine of the plants.

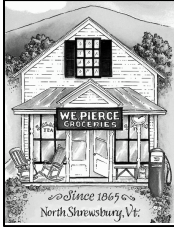
If you're interested in how herbal medicine might support your health, please reach out.

**Scott Courcelle**

Herbal Medicine consultations  
Fruit Tree Grafting + Pruning Garden  
Consultations

[alchemygardens@gmail.com](mailto:alchemygardens@gmail.com)

(802) 492-2087



## PIERCE'S STORE

802-492-3326

[www.piercesstore.com](http://www.piercesstore.com)

Hours: 8am to 6pm

Closed Mondays

The Easter Bunny made an appearance too—handing out eggs and posing for photos, which was a highlight for a lot of the kids (and a few adults).

Big thanks to everyone who came out, and especially to the people who made it happen: Larry Abelman for organizing it all, along with Lana Vanucchi, Adrienne Raymond, Alannah Severy, and Ann-Marie Moody.

### Happy to be back at Pierce's

I was part of Pierce's world for a long time—I started volunteering and then working in the store back in 2017. This past year or so, the Sparkle Barn pulled me in a different direction and I haven't been around as much, which made me realize just how much I missed it. So, I'm really happy to be back in the mix now as a new member of the Board. I'm excited to contribute to Pierce's and the community I love and miss.

The 3<sup>rd</sup> Annual Pierce's Easter Egg Hunt took place on Saturday, April 4, and it was a great day. The younger kids (ages 6 and under) hunted across the street, while the older group covered the lawn next to the store—very focused and very determined.

We hid over 200 eggs filled with treats, plus two golden eggs with Pierce's gift certificates inside. Those were definitely the prizes everyone had their eye on.



We also wrapped up Pierce's first annual Snow Pile Melt Raffle. The last patch of snow finally disappeared on Saturday, April 14 (it took its time), and this year's winners are Dirk Thomas, Barbara Ferguson, and Nancy West. Congrats—and yes, we're planning to do it again next year.

Coming up: May 9 from 4:30–6:00pm Pierce's will be hosting a beer tasting with Foley Brothers. Beer will be available for purchase, and it should be a fun, easy way to gather now that we're officially out of winter. Hope to see you there.

~Stacy Harshman



### D. F. LEIN HANDYMAN SERVICE

Rutland VT

Dale F. Lein

704-728-7442

[dflein@yahoo.com](mailto:dflein@yahoo.com)



Fully Insured  
Home Repairs  
Woodworking Projects

### YANKEE HOME MANAGEMENT



Property Management  
and Maintenance

[yankeehomemanagement.com](http://yankeehomemanagement.com)

802-259-3064

Keith Hawkins  
PRESIDENT

MT. HOLLY, VT

The Times of Shrewsbury  
PO Box 373  
Cuttingsville, VT 05738

PRESORT STD  
US POSTAGE PAID  
SHREWSBURY, VT  
05738  
PERMIT NO. 2

To: Postal Patron

---

Donors are recognized for the remainder of the calendar year in which their donation is received. The *Times* is mailed to all residents of Shrewsbury and is also available online. The cost of printing and mailing is made possible through advertising and donations and are very much appreciated, but are not tax deductible. Donations can be made to: *Times of Shrewsbury*, P.O. Box 373, Cuttingsville, VT 05738. **THANK YOU!**

Joan Aleshire  
Craig & Peggy Angstadt  
Gary Arthur  
Roy & Cindy Arthur  
Steve Banik & Virginia Gundersen  
Bob Beardmore  
Gloria & Mike Benson  
Rich & Cynthia Biziak  
Laura Black  
Kristi & Sandy Bragg  
Virginia & Dan Buckley  
Christina Clarke  
Marilyn Dalick  
Sally Deinzer  
Deborah DeLong  
DiPrinzio Family  
Philippe & Linda Ducrot  
Stan & Louise Duda  
Niels and Pamela Erickson  
David & Jo Fretz  
Licia Gambino  
Scott Garren & Heather Shay  
Jonathan Gibson & Eliza Mabry  
Richard Gile & Sue Brown  
Goodwin Family  
Pam & Peter Grace  
Barry & Barbara Griffith  
Carole Cook Hass

John & Betty Heitzke  
Connie & Bob Hoelscher  
Carmine Iannace & Rita Gylys  
Diane Jakobsen  
Jack & Betsy Jesser  
Ellen Jorgensen  
Michael & Angie Lauri  
Mark & Connie Mackintosh  
Clare & Ed Mangine  
Gina Marconi  
Gerry & Chryl Martin  
Paddy & Alice Martin  
Stephen & Patricia Martyn  
Lynn McDermott & Becky Bates  
Jeff & Pam Monder  
Moody Family  
Trish Norton  
Allan Patrick  
Fran Patten  
Ken & Coral Petretti  
Roxanne Ramah  
Melissa Reichert  
Dino Rice  
Helen & Andy Richards-Peelle  
Ridlon Family  
Ed & Judy Ryan  
Margery Salmon  
Suzanne Savage

Ed & Deborah Sawyer  
Gary Shattuck  
Alan & Linda Shelvey  
**Shrewsbury**  
Cooperative at Pierce's Store  
Library  
Mountain School PTO  
Spring Lake Ranch  
John C. Stewart  
Wendy Stewart  
Christopher & Lisa Stout  
Nan & Tim Stout  
Jess & Ariane Torres  
Liesbeth van der Heijden  
Ann Vanneman  
Lana Vanucchi  
Reesa Watson  
Phyllis & Michael Wells  
Jay Webster  
Nancy West  
Lee Wilson  
William & Peggy Wilson  
Winkler Family  
Mark & Connie Youngstrom  
Susan Zak & Andrew Camp

